

## RF Exposure

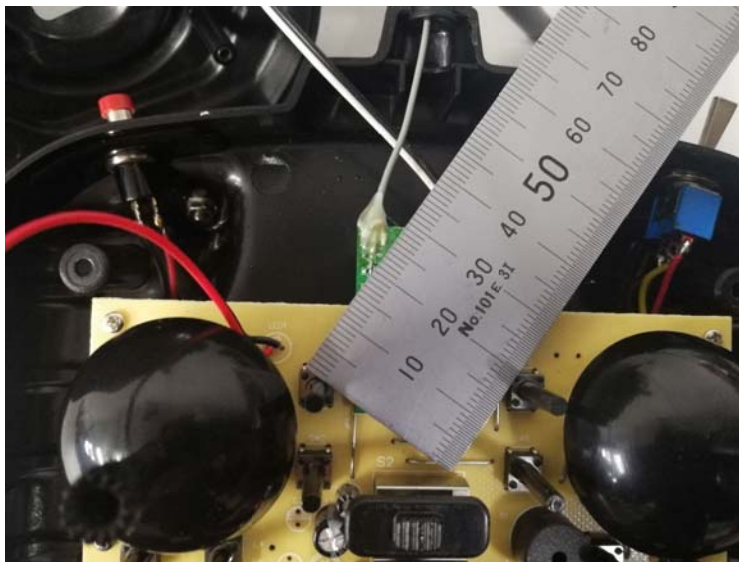
### Applicable Standard

According to §1.1307(b)(5), systems operating under the provisions of this section shall be operated in a manner that ensure that the public is not exposed to radio frequency energy level in excess of the Commission's guideline. This is a Portable device. The **Section 4.3.1 and Appendix A of KDB447498 D01 V05 was used as the guidance.**

### Calculation Result (Worse case)

$$[(\text{max. power of channel, including tune-up tolerance, mW})/(\text{min. test separation distance, mm})] \cdot [\sqrt{f(\text{GHz})}] = 63.97/20 \cdot 1.55 = 4.96$$
, this value is less than  $\leq 7.5$  for 10-g extremity SAR.

Min. test separation distance measured=20mm



**The SAR measurement is not necessary.**

**Note:** The shortest distance between antenna and The location where the user operates is 20mm.