

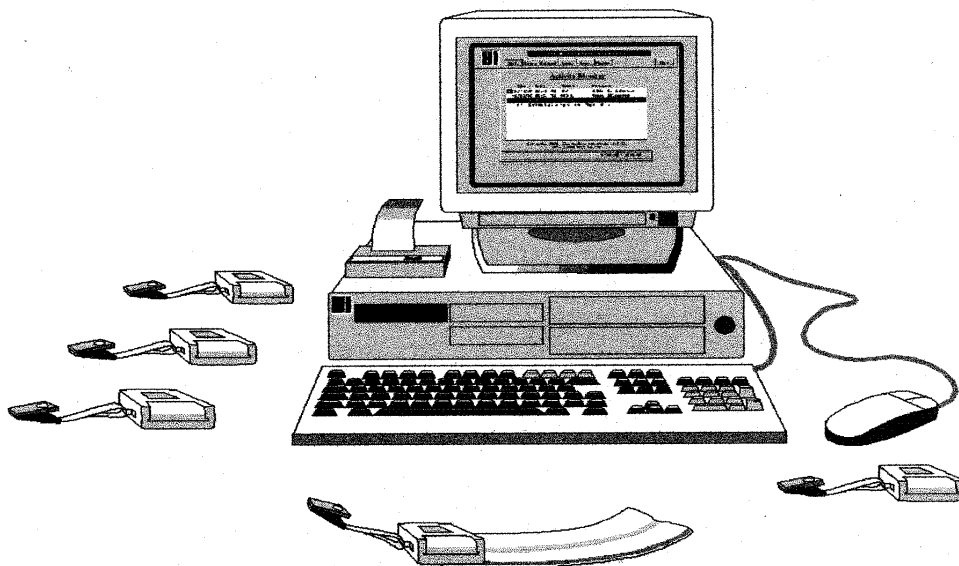
Exhibit 8: User's Manual



# ***Installation Manual***

## ***REDEEM***

### ***Professional Incontinence Management System***



***For Professional Installation Only***

See disclaimer page for all appropriate notes, cautions and warnings

Copyright © 1997, 1998, & 1999 • Health Sense International, Inc. • USA

# ***REDEEM***

## ***Professional Incontinence Management System***

### ***Disclaimer Page***

#### Cautions:

Changes or modifications to the resident transmitter, not expressly approved by Health Sense International, could void the user's authority to operate this equipment.

#### Notes:

This equipment has been tested and found to comply with the limits for a class B digital device, pursuant to Part 15 of the FCC Rules. These limits are designed to provide reasonable protection against harmful interference in a residential installation. This equipment generates, uses and can radiate radio frequency energy and if not installed and used in accordance with the instructions, may cause harmful interference to radio communications. However, there is no guarantee that interference will not occur in a particular installation.

If this equipment does cause harmful interference to radio or television reception, which can be determined by turning the equipment off and on, the user is encouraged to try to correct the interference by one or more of the following measures:

1. Reorient or relocate the receiving antenna.
2. Increase the separation between equipment and receiver.
3. Connect the equipment into another outlet on a circuit different from that which the receiver is connected.
4. Consult the dealer or an experienced radio/TV technician for help.

Introduction:

Proper installation of *The REDEEM System* is critical to achieving optimum equipment performance levels. A site survey is completed and reviewed before a system is configured for a facility. Each system is factory assembled and tested with all components to be used at a facility before delivery for installation. Included at the end of this *Installation Manual* is the site review document package, which includes a complete bill of materials along with the proper equipment installation positions for this facility. Follow installation directions closely to ensure proper system performance.

Unpacking System Components:

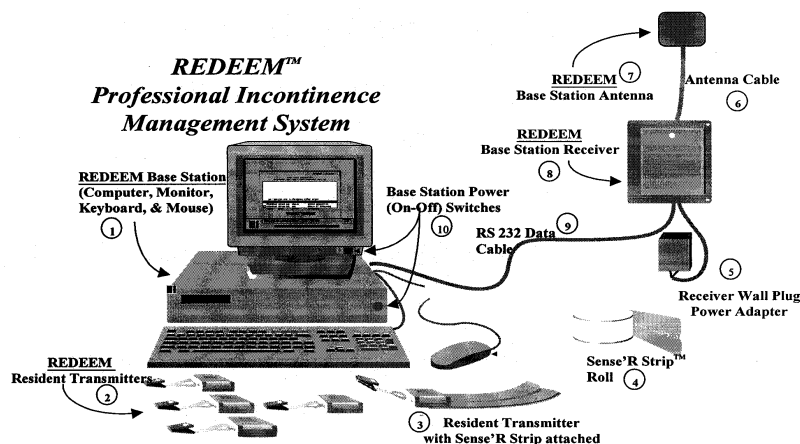
Inspect all packages at the time of delivery. If packages appear damaged in any way, make specific notes describing damage in detail. Provide the shipper with a copy of all damage descriptions for claims purposes. Carefully unpack each piece of equipment and inspect for damage. If any damage is suspected, make specific notes describing it in detail. Again, provide the shipper with a copy of all damage descriptions for claims purposes.

Set each piece of equipment out on a large work surface and check the contents of the shipment against the Bill of Materials. (The Bill of Materials Document will be included in the Site Survey documentation package at the back of the Installation Manual.) If any items are missing, or damaged, contact your *REDEEM System* distributor, or Health Sense International, Inc. directly at the phone number listed at the end of this manual.

Parts Identification Illustration and Explanations:

The following illustration shows a typical system for parts identification purposes. Additional items may be included as optional equipment is added or site requirements dictate. Refer to the Bill of Materials in the document package for the equipment list for this site installation.

d:\personal\fdal\subpart c\8-transfer\install manual.doc



Item	Description
1	REDEEM Base Station with Computer, Video Monitor, Keyboard, & Mouse.
2	REDEEM Resident Transmitters - The transmitters are the signaling devices that alert the system that an incontinent event has occurred and that the event has been attended.
3	REDEEM transmitter connected to a short piece of Sense'R Strip.
4	Sense'R Strip - This is the disposable sensor element that recognizes a wet condition when attached to an REDEEM transmitter.
5	Receiver Wall Plug Power Adapter - Supplies the correct power to the receiver system.
6	Coaxial Antenna Cable - Carries the signal from the antenna through the antenna and on to the receiver.
7	Antenna - This is the signal collecting device that receives the REDEEM transmitter signals.
8	Receiver - This accepts the transmitter signal, and sends it on to the base station portion of the system where it is processed and logged in as valid data.
9	RS-232 Data Cable - This cable carries the data from the receiver to the REDEEM base station.
10	Monitor and Base station Power (ON - OFF) Switches

#### Receiver Installation:

Mount the Receiver/Antenna System at the location identified on the installation floor plan document. Make sure the mounting plate is secure and that access is available to the Receiver. The Receiver must be mounted at a position which is at least 48 inches from any base station or base station video monitor.

d:\personal\fda\subpart c\8-transfer\install manual.doc

Connect the Receiver wall plug power adapter to an electrical outlet and route the power cable to the receiver.

Antenna System Installation:

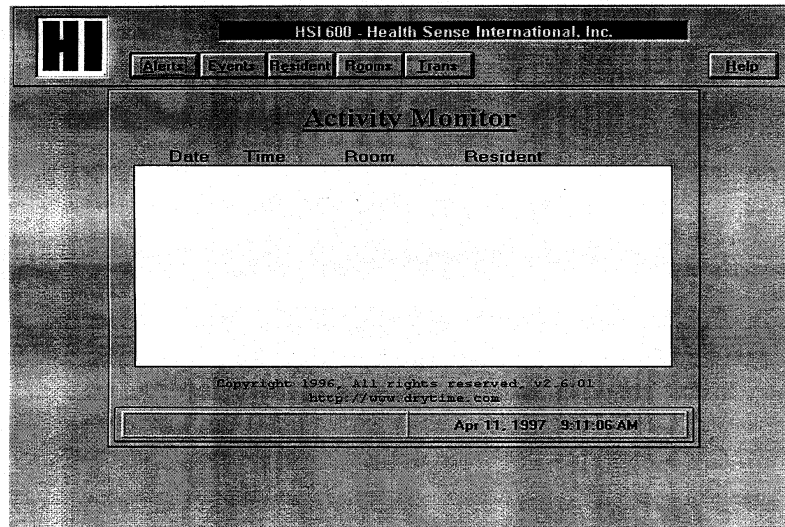
Mount the antenna at the location identified on the installation floor plan document. Route all cables in accordance with local code to ensure a safe and functionally operational installation.

REDEEM System Base Station Installation:

Place *The REDEEM System* base station (computer, keyboard, mouse, video monitor) and printer at the location specified in the installation floor plan document. Make sure there is adequate desk space for the console, keyboard, mouse, and printer. Set the Video Monitor on the console as illustrated.

1. Connect the Video Monitor video cable to the video output on the back of the console.
2. Connect the keyboard to the keyboard output on the back of the console.
3. Connect the mouse to the Coma port connection on the back of the console.
4. Connect the RS-232 Data cable from the Receiver/Antenna System to the Comport connection on the back of the console.
5. Connect the Report Printer data cable to the LPT1 port connection on the back of the console.
6. Plug the printer power cord into an appropriate power outlet.
7. Make sure the Video Monitor ON-OFF switch is in the OFF position. Plug the Video Monitor power cord into an appropriate power outlet.
8. Make sure *The REDEEM System* base station console power switch is in the OFF position. Plug the console power cord into an appropriate power outlet.
9. Turn the Video Monitor ON.
10. Turn the console ON.
11. Observe the Video Monitor while *The REDEEM System* base station "boots", or starts up. When this process has completed, the Video Monitor screen should appear as shown below.

d:\personal\fa\subpart c\8-transfer\install manual.doc



*The REDEEM System main screen*

Once this screen is visible, the system is ready to monitor fluid loss events.

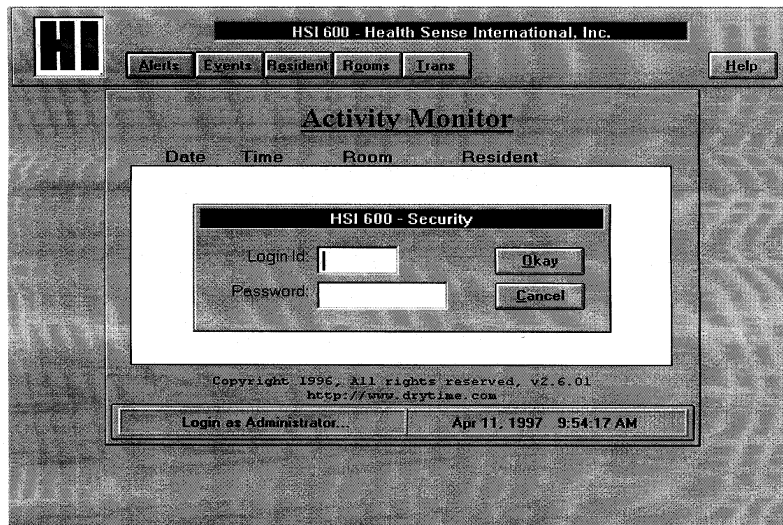
#### System Testing:

*The REDEEM System* has been fully tested prior to being shipped to a facility. It is still important that the system be fully tested after the installation to ensure that it is properly configured for optimum equipment performance. Follow the procedure outlined below to test the system.

1. Turn on *The REDEEM System* and wait for a completed "boot" or start-up. The main screen should be visible as shown in the previous illustration.
2. Move the mouse on the desk surface. The pointer should move on the screen with the movement of the mouse on the desk surface. If no pointer movement is observed when the mouse is moved on the desk surface check the mouse connection on the back of the console. Also check to see that the ball on the bottom of the mouse is clean and that it will rotate when moved by hand.

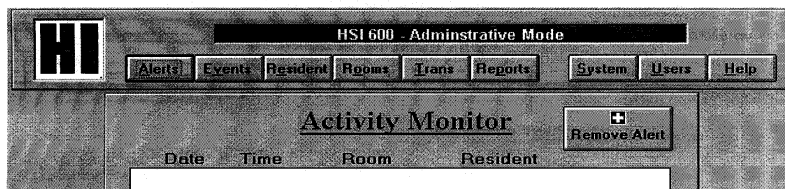
d:\personal\fdal\subpart c\8-transfer\install manual.doc

3. Using the mouse, move the pointer so that it is positioned on the HSI logo in the upper left corner of the main screen. Quickly double click the left mouse button. A "Logic" dialog box will appear as illustrated below.



4. Click the left mouse button with the pointer in the "Login Id:" entry field.  
5. Using the keyboard, type in the lower case, the letters "hsi" without using quotation marks.  
6. Press the tab key once. The cursor should be blinking in the "Password:" field. Using the keyboard, type in lowercase, the letters "sysadmin" without using the quotation marks. Press the "RETURN" or "ENTER" key. The main screen should change to the administration mode. The change in the upper portion of the screen will appear as viewed in the following illustration.

d:\personal\fa\subpart c\8-transfer\install manual.doc



7. Select an REDEEM Resident Transmitter and note the transmitter ID code.
8. Move the mouse pointer onto the "Resident" button on the main screen tool bar. Click the left mouse button. The "Resident" Dialog box will appear as shown in the following illustration.

The screenshot shows the 'Residents' dialog box within the 'HSI 600 - Administrative Mode' window. It features a 'Select Resident' dropdown menu with 'John Q Doe' selected. To the right are buttons for Add, Delete, Update, Help, and Close. Below the dropdown are input fields for First (John), MI (Q), Last (Doe), Birth (1/1/01), Social Security (111-22-3333), Sex (Male selected), Admitted (1/1/96), Discharge, Room (001), Transmitter Id, Special, and a large text area for Comment. Navigation arrows are located between the Social Security and Discharge fields.

9. Click the left mouse button with the pointer on the down pointing arrow to the right of the "Select Resident" box. A drop down list of names will appear. Select "John Q. Doe" by clicking the left mouse button with the pointer on this name.

d:\personal\tda\subpart c\8-transfer\install manual.doc



10. Move the mouse pointer onto the down pointing arrow at the right side of the Transmitter id: field and click the left mouse button. A drop down list of available transmitters will appear. Select the transmitter id code for the chosen REDEEM transmitter by clicking the left mouse button with the pointer on the number. The REDEEM transmitter id code will appear in the "Transmitter id:" field.
11. Click the left mouse button with the pointer on the "Update" button - or - hold down the ALT key and press the U key. This will assign this REDEEM transmitter to the test resident John Q. Doe.
12. Click the left mouse button with the pointer on the Close button - or - hold down the ALT key and press the C key.
13. Position the mouse pointer on the HSI loge in the upper left corner of the screen and quickly double click the left mouse button. A dialog box will appear asking if you wish to log out of Administration mode. Click the left mouse button with the pointer on the Yes button.
14. The system is now ready to respond to signals from the assigned REDEEM transmitter.
15. Make sure the REDEEM transmitter to be used for the test has a fresh battery installed.
16. Press and release the "RESET" button on the front label of the REDEEM transmitter. This step ensures that the transmitter is in a reset mode and is ready to signal a fluid loss event.
17. Attach a length of Sense'R Strip to the REDEEM transmitter as described in *The REDEEM System Instruction Manual*.
18. Using a metal paper clip, a quarter or some other conductive metal object, bridge the two metal strips at the end of the Sense'R Strip. The *Activity Monitor* on the main screen should display the date, time, room number and name for John Q. Doe.
19. Remove the bridge from the metalized strips at the end of the Sense'R Strip and press and release the "RESET" button on the face label of the REDEEM transmitter. The information for John Q. Doe should disappear from the *Activity Monitor*.
20. Repeat steps 18 and 19 for locations at the farthest expected range to be monitored in the facility. If each event is acknowledged, the system is performing properly. If these tests fail, follow the procedures outlined in the trouble shooting section that follows.

#### Installation Troubleshooting:

Testing at each phase of the installation process assures that problems are found before they become part of the completed system.

d:\personal\fdal\subpart c\8-transfer\install manual.doc