



## User guide

### Internet radio

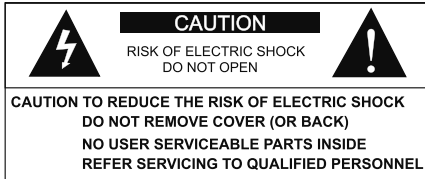


# VANTAGE

### CONTENTS

Safety information .....	3
Safety instructions .....	4
Useful information .....	5
Radio front view .....	6
Radio back view .....	7
Mains power plug .....	7
Menu structure .....	8
What you need to get started .....	10
Connecting to network .....	11
Choosing a station .....	14
Preset stations .....	15
Playing music from the Media Player .....	16
Sleep function .....	17
Setting time/date .....	18
Setting the alarm .....	19
Snooze function .....	20
Additional options .....	21
Language .....	21
LCD Standby Backlight .....	21
Factory reset .....	21
Software update .....	22
Info .....	22
Registration .....	23
Appendix .....	
Set up media sharing in Windows Media Player 11 .....	24
Set up CIFS/SMB sharing on PC or NAS .....	26
Set up media sharing in Vista Simple File Sharing .....	28
Typical home network setup .....	30
Set up media sharing in Mac OS .....	31
Trouble shooting .....	32
Technical specifications .....	33

## SAFETY INFORMATION



The lightning flash with arrowhead symbol inside an equilateral triangle shown above is intended to alert the user to the presence of uninsulated "hazardous voltage" within the product's enclosure, which may be of sufficient magnitude to induce a risk of electric shock to persons.

The exclamation mark inside an equilateral triangle shown above is intended to alert the user to the presence of important operating and maintenance (servicing) instructions in the literature accompanying the product.

To reduce the risk of electrical shock, fire, etc.:

1. Read these instructions.
2. Keep these instructions.
3. Heed all warnings.
4. Follow all instructions.
5. Do not use this apparatus near water.
6. Clean only with dry cloth. For stubborn stains, use a soft cloth dampened with a weak solution of mild detergent and water. Dry the apparatus immediately afterwards with a clean cloth. Do not use abrasive clothes, thinners, alcohol, or other chemical solvents, because they may damage the finish or remove the panel lettering.
7. Do not block any ventilation openings. The ventilation shall not be impeded by covering the ventilation openings with items, such as newspapers, table clothes, curtains, etc.
8. Do not install near any heat source such as radiators, heat registers, stoves, or other apparatus (including amplifiers) that produce heat.

9. Do not defeat the safety purpose of the polarized or grounding type plug. A polarized plug has two blades with one wider than the other. A grounding type plug has two blades and a third grounding prong. The wide blade or the third prong is provided for your safety. If the provided plug does not fit into your outlet, consult an electrician for replacement of the obsolete outlet.

10. Protect the power cord from being walked on or pinched particularly at plugs, convenience receptacles, and the point where they exit from the apparatus. If the power cord is damaged, a qualified repairer should repair it.

11. Only use attachments/accessories specified by the manufacturer.

12. Use only with the cart, stand, tripod, bracket or table specified by the manufacturer, or sold with the apparatus. When a cart is used, use caution when moving the cart/apparatus combination to avoid injury from tip-over.

13. Unplug this apparatus during lightning storms or when unused for long periods of time.

14. Refer all servicing to qualified service personnel. Servicing is required when the apparatus has been damaged in any way, such as power-supply cord or plug is damaged, liquid has been spilled or objects have fallen into the apparatus, the apparatus has been exposed to rain or moisture, does not operate normally, or has been dropped.

15. The apparatus shall not be exposed to dripping or splashing and no objects filled with liquids, such as vases, shall be placed on the apparatus.

16. The mains power plug or an appliance coupler is used as the disconnect device, the disconnect device shall remain readily operable.

17. Please read Rating Labels at the bottom of the radio for power input and other safety information.

### SAFETY INSTRUCTIONS

If this Internet radio has been moved from a cold place to a warm place (e.g. from a cold car boot to a warm room), PLEASE WAIT for 2-3 hours before plugging it in. There is a risk that moisture may have condensed in the Internet radio, which can cause damage to your Internet radio. To avoid damage please unpack your Internet radio and allow it to stand at room temperature for 2-3 hours before use. This will help any moisture evaporate and prevent unnecessary damage to your Internet radio.

**DO** ensure that the mains power plug is easily accessible.

**Covers** – Do not remove any fixed covers as this may expose dangerous voltages.

**Weather** – It is advisable to unplug an external aerial during a thunderstorm.

**Ventilation** – The ventilation holes on the casing of your Internet radio prevent it from overheating. Do not block or cover these holes, especially with cloth or paper. Do allow a minimum distance of 5 cm around the apparatus for sufficient ventilation.

**Damage** – Never use your Internet radio if it is damaged in any way. Always place your Internet radio on a flat level surface avoiding any place, which may be subject to strong vibration.

**Temperature** – Avoid extremes of temperature, either hot or cold, place your Internet radio well away from heat sources such as radiators or gas/electric fires.

**Moisture** - Do not allow your Internet radio to be exposed to rain, moisture or dust. If any liquid is spilt into your Internet radio it can cause serious damage. If you spill any liquid into your Internet radio you should switch it off at the mains power plug immediately. Contact your store without delay.

**CAUTION** - Do not open any covers and do not repair yourself. Only qualified personnel are allowed to carry out repair work.

### USEFUL INFORMATION

#### Firmware

The firmware of this product is continuously updated, which means that the user interface may vary slightly from this manual.

#### Support & warranty:

[www.oxxdigital.com](http://www.oxxdigital.com)

#### License information

This product includes technology owned by Microsoft Corporation and under a licence from Microsoft Licensing GP. Use or distribution of such technology outside of this product is prohibited without a licence from Microsoft Corporation and/or Microsoft Licensing, GP as applicable.

#### Certifications

This Internet radio is certified according to the CE specifications.

#### WEEE

Electrical and electronic equipment (EEE) contains materials, parts and substances, which can be dangerous to the environment and harmful to human health if waste of electrical and electronic equipment (WEEE) is not disposed of correctly.



Equipment, which is marked with the WEEE logo (as shown above, should not be thrown away with your household waste. Contact your local authority waste disposal department, as they will be able to provide details of the recycling options available in your area.

All rights reserved © OXX Digital 2009.

Subject to modification and improvement of future products and documentation without prior notice.

#### FCC ID

This device complies with Part 15 of the FCC rules. Operation is subject to the following two conditions:

1. This device may not cause harmful interference.
2. This device must accept any interference received including interference that may cause undesired operation.

#### Adaptor



**SWITCHING  
POWER SUPPLY**

**MODEL : S008CM0900090**

**INPUT : 100-240V~**

**50/60Hz 250mA**

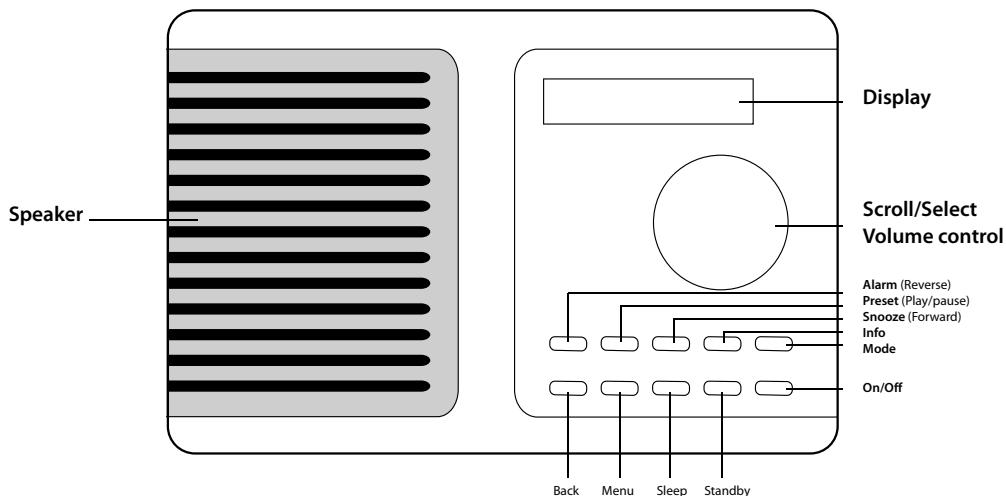
**OUTPUT: 9.0V = 900mA**

Only use the power supply listed in the user manual. Using an unauthorised power supply will invalidate your guarantee and may irreversibly damage the radio.

### BOX CONTENTS

- Internet radio
- User guide
- Quick guide
- Warranty card
- Adaptor 9V
- EU and UK mains power plug (not in the US)

### RADIO FRONT VIEW



#### Scroll/Select - Volume control

- Turn the knob to scroll through the menus
- Press the knob to select a menu item
- Turn to increase/decrease the volume

#### Alarm (⏮ Reverse \*)

Set the alarm. See page 19 for further details.

#### Preset (⏮ ▶ Play/pause \*)

Press to store or listen to preset stations (max. 10). See page 15 for further details.

#### Snooze (⏮ ▶ Forward \*)

Set snooze time (max. 30 minutes). See page 20 for further details.

#### Info

Press to see topical information, e.g. actual date and time. Different options in Internet Radio and Music Player.

#### Mode

Shift between Internet Radio and Music Player

#### Back

Press to go back to the previous screen, e.g. if you make a mistake or regret a selection

#### Menu

Press to go to the top of the Internet Radio or Media Player main menu

#### Sleep

Set the sleep time (max . 60 minutes). See page 17 for further details.

#### Standby

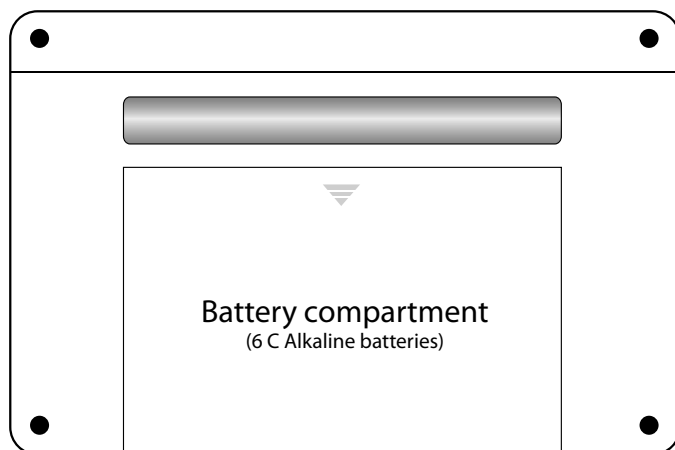
Set the Internet radio in standby mode

#### On/off

Turn your Internet radio on or off

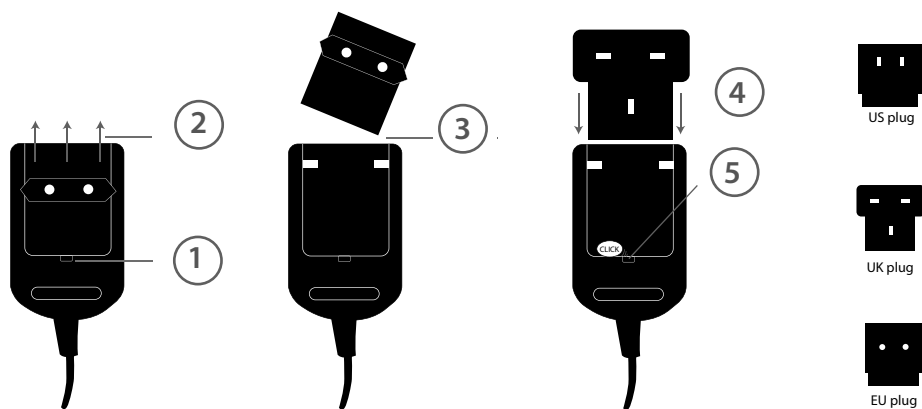
*\*) Functions stated in brackets relate to the Media Player function.*

## RADIO BACK VIEW



## MAINS POWER PLUG

How to change the plug



1. Press the "PUSH" button

2. Push the plug upwards

3. Remove the plug

4. Insert the plug required for your area

5. Push downwards until you hear a **CLICK** sound

### MENU STRUCTURE

#### Main menu

##### Internet radio

- Station list
  - My Favourites
  - Stations
    - Location
    - Genre
    - Search stations
    - Popular stations
    - New stations
- Podcasts
  - Location
  - Genre
  - Search podcasts
- My Added Stations
- Help
  - Get access code
  - FAQ

##### Music Player

- Shared files (UPnP)
- Shared folders (CIFS/SMB)
- PC settings
  - User name
  - Password
- System settings
- Main menu

##### Alarms

- Alarm 1
  - Enable
    - On/Off
  - Time
  - Mode
    - Buzzer
    - Internet radio
  - Preset:
    - Last listened
    - Preset 1
    - Preset 2
    - Preset 3
    - Preset 4
    - Preset 5
    - Preset 6
    - Preset 7
    - Preset 8
    - Preset 9
    - Preset 10
  - Frequency
    - Daily
    - Once
    - Weekends
    - Weekdays
  - Volume 1-20
  - Save
- Alarm 2 (as alarm 1)

##### Sleep

- Set/show sleep time



### System settings

Network	
Internet Wizard	
View settings	
Active connection	
MAC Address	
DHCP	
PC Settings	
SSID	
IP Settings	
IP Address	
Subnet mask	
Gateway address	
Primary DNS	
Secondary DNS	
Manual settings	
Wireless	
DHCP Enable	
DHCP Disable	
Network profile	
Time /Date	
Set Time/Date	
Auto update	
Update from NETWORK	
No update	
Set format	
12/24 hour form.	
Set timezone	
Daylight savings	
	Language
	Danish
	English (GB)
	English (US)
	Finnish
	French
	German
	Italian
	Netherlands
	Norwegian
	Portuguese
	Spanish
	Swedish
	LCD Standby Backligh
	Always on
	Off
	Factory reset
	Software update
	Info
	SW version
	Radio ID

### WHAT YOU NEED TO GET STARTED

- A broadband Internet connection.
- A wireless access point (WiFi) connected to your broadband Internet, preferably via a router.
- If your wireless network is configured to use Wired Equivalent Privacy (WEP) or WiFi Protected Access (WPA & WPA2) data encryption you need to know the WEP or WPA/WPA2 code in order to enable you to make the Internet radio communicate with the network.
- If you do not know the code, please contact your ISP (Internet Service Provider) or other wireless router supplier.
- If your wireless network is configured with MAC filtering you will need to enter the Radio's MAC address into your wireless access point. To find the Radio's MAC address you must enter into the following menu items:
  1. Main menu
  2. System settings
  3. Network
  4. View settings
  5. MAC Address
- To enter the MAC address into your wireless access point, you must read the instructions supplied with the wireless access point.

Before you continue, make sure that your wireless access point is powered up and connected to your broadband Internet. To get this part of the system working you must read the instructions supplied with the wireless access point.

## CONNECTING TO NETWORK

### Step 1 - Power up the radio and connect to the Internet

Connect your Internet radio to the mains power plug and switch it on by pressing the On/Off button.

Starting

After a few seconds the display will show:

Internet Radio  
Music Player

Press the Scroll/Select knob to confirm that you want access to the Internet radio feature.

Network wizard  
scanning

Wait for 10 to 15 seconds and the radio will ask you to select a network from the list.

### Step 2 – Access network

- 1) If the radio finds more than one network, turn the Scroll/Select knob to scroll through the name list.
- 2) Press the knob when the name of your own network is displayed.

Station list  
System settings

If your network is not configured to request a password (WEP/WPA/WPA2), the radio will connect to the network and the display will show:

### CONNECTING TO NETWORK (Continued)

If you are requested to enter a WEP/WPA/WPA2 password the radio will display:

WiFi Device = the name of your wireless internet access point.

1) Press the Scroll/Select knob and the radio will display this password entry screen:

2) Use the Scroll/Select knob to scroll through the characters.

Line 1 = digits - Line 2 = letters

3) Confirm the highlighted character by pressing the Scroll/Select knob.

Press the **Back** button if you make a mistake when entering the password

**Please observe that WEP/WPA/WPA2 passwords are case-sensitive.**

Having entered the final character of your password in this way, scroll to **OK** and press the Scroll/Select knob to store your password.

**Note:** The radio will automatically remember your WEP/WPA/WPA2 network codes. There is no need to re-enter the codes, unless you perform a factory reset.

The radio will now successfully connect to your network and the display will show:

Press the Scroll/Select knob to access the **Station list** menu offering you 5 additional options.

If you select **Help**, the radio will provide you with the access code needed to register the radio online and inform you of FAQ solutions.

WiFi Device  
[Rescan]

Key: [Set]  
0123456789., OK

Key: [xxxxxxxx]  
0123456789., OK

Station list  
System settings

My Favourites  
Stations

Podcasts  
My Added Stations

My Added Stations  
Help

### Step 3 – Access another network

If at a later moment you want to take your internet radio to another place or to access another wireless network proceed as follows:

- 1) Enter the main menu.
- 2) Turn the Scroll/Select knob to **System settings**
- 3) Press to confirm
- 4) Press the Scroll/Select knob to confirm access to **Network**
- 5) Press the Scroll/Select knob to confirm access to **Internet Wizard**
- 6) Select the network from the list.

Your internet radio will now connect to the network unless you are requested to enter a WEP/WPA/WPA2 code. In that case please see the previous page for how to enter the code.

Of course, you have also the option of establishing the access manually. Just follow the above steps 1-3 and proceed as follows:

- 1) Turn the Scroll/Select knob to **Manual settings**
- 2) Press to confirm.
- 3) Press the Scroll/Select knob to confirm access to **Wireless**.
- 4) Press the Scroll/Select knob to confirm access to **DHCP disable**

You have now access to a menu enabling you to enter various IP settings, as IP address, Subnet mask, gateway, primary and secondary DNS.

Internet Radio  
Music Player

Sleep  
Alarms

Alarms  
System settings

Network setup  
Time setup

Internet Wizard  
View Settings

Manual settings  
Network profile

Wireless

DHCP Enable  
DHCP Disable

## CHOOSING A STATION

When your Internet radio has connected to your network you can select a station.

- 1) Press the Scroll/Select knob to confirm access to **Station list**.
- 2) Press to confirm.
- 3) Turn the Scroll/Select knob to **Stations** and press to confirm.

You have five options available for selecting a station:

- 4) Turn the Scroll/Select knob until you see your desired option.
- 5) Press the knob to confirm.

Selecting **Location** offers you an alphabetical list of regional broadcast programmes.

- 6) Turn the Scroll/Select knob to your desired location.
- 7) Press to confirm.

The radio will now load the station list.

Choosing **Genre** under **Stations** offers you an alphabetical list of station types.

- 1) Turn the Scroll/Select knob to view the list.
- 2) Press to confirm the desired type.

Station list  
System settings

Location  
Genre

Search stations  
Popular stations

New stations

Africa  
Asia

Angola  
Benin

Adult contemporary  
Alternative

You have more options in the **Station list** menu.

The first menu you see is the **My Favourites** menu where you can store all your favourite stations. When listening to the station you can store it just by pressing/holding the Scroll/Select knob.

If your radio is registered on Frontier's webpage you can see the station in "**My Favourites**" under your account. See how to register on Frontier's webpage on page 23.

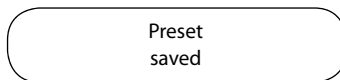
It is also from the Station list menu on your internet radio that you search for international **Podcasts** or **Add new stations** to your list of favourites.

### Preset stations

Once you have found a station which you like to listen to you can store it as a preset station and thus have easy access to it at a later on. You can store up till 10 preset stations.

- 1) Press the **Preset** button when listening to the station.
- 2) Use the Scroll/Select knob to scroll to the first vacant location number or to a specific location number under which you wish to store the station.
- 3) Press and hold the Scroll/Select knob to store the station.

A confirmation will be shown on the display.



### Listening to a preset station

When you want to listen to the station again

- 1) Press the **Preset** button.
- 2) Use the Scroll/Select knob to scroll through the preset stations.
- 3) Press the Scroll/Select knob to select the preset station.

## PLAYING MUSIC FROM THE MUSIC PLAYER

The Music Player allows you to access music files stored on a PC, MAC or NAS connected to the same network and to playback the music files through the radio.

**PC users:** UPnP shared music is typically – but not exclusively – managed via Windows Media Player as the UPnP server in the network. Twonky and other UPnP servers can also be accessed. Please find more info on how to setup Windows Media Sharing in the appendix on page 24. Folder sharing on PC with CIFS/SMB can also be accessed through the radio. Please find more info in the appendix on page 26.

**NAS (Network Attached Storage) units:** Are also accessible through the radio – no matter whether they support UPnP sharing or CIFS/SMB sharing. See the appendix on page 29 for more information.

**MAC computers:** See the appendix on page 31 for more information.

### User name/password

As default, the radio is set to use the guest user account when logging on to the computer sharing the music. If this account is disabled, or another account name is used, you will need to change the user name and password accordingly on the radio. The default guest user name is deleted by pressing the **Back** button.

To change user name and password you must select **PC settings**. On page 12 you can see a detailed description of how you change user name and password.

The menu items **System settings** and **Main menu** are shortcuts giving you easy access to the system settings and the main menu of the radio.

### How to listen to music from shared files

- 1) Press the menu button to get access to the main menu:
- 2) Turn the Scroll/Select knob to **Music Player**
- 3) Press the knob to confirm.

### UPnP

- 1) Select < Shared files > to search for UPnP servers on the network.

**Note:** Wait for the radio to find all the servers available on the network. This may take some time depending on the size and speed of your network.

- 2) Select the server name in the list.
- 3) Open the music folder and access all your shared music.

### CIFS/SMB

- 1) Select < Shared folders > to search for CIFS/SMB shared folders on the network.
- 2) Select the PC/MAC from which you want to play the music files.
- 3) A list of shared folders will be shown in the radio display. Use the scroll/select knob to browse through the list of folders.
- 4) Confirm your choice by pressing the scroll knob.
- 5) Select the tracks you want to play.
- 6) Press the scroll/select knob to confirm.

### Navigating

Use the controls ◀ and ▶ to navigate in the Music Player. It is not possible to fast-forward and backward by holding these buttons.

Press || ▶ to pause.




## SLEEP FUNCTION

The easiest way to set the sleep function is to press the **Sleep** button. Each press increases the sleep time by 15 minutes. The maximum sleep time period is 60 minutes.

You can also set the sleep time via the menu system.

- 1) Enter **Main menu**
- 2) Turn the Scroll/Select knob to **Sleep**
- 3) Press to confirm.
- 4) Turn the Scroll/Select knob to increase by 15 minutes per step.
- 5) Press to confirm the requested interval.



Music Player  
Sleep

The programme you are listening to will turn off after the pre-defined period of time and the radio will enter into standby mode.

You can resume the playing by pressing the **Standby** button.

You can always see the remaining sleep time by pressing the **Sleep** Button.

### SETTING TIME/DATE

- 1) Enter *Main menu*.
- 2) Turn the Scroll/Select button to *System settings*
- 3) Press Scroll/Select button to confirm.
- 4) Turn the Scroll/Select button to *Time/Date*:
- 5) Press to confirm.
- 6) Press again to get access the Set Time/Date menu.
- 7) Turn and press the the Scroll/Select knob to enter date and time.

Alarms  
System settings

Network  
Time/Date

Set Time/Date  
Auto update

24-03-2009  
14:30

**The Time/Date menu offers you 4 additional options:**

#### Auto Update

This option automatically updates the time and date. Please make sure that your Internet radio is connected successfully to the Internet before selecting this feature.

#### Set format

Select whether you want the time to be shown on 12 or 24 hour format. Shift between the two formats by turning the Scroll/Select knob and confirm by pressing it.

#### Set time zone

When selecting your own time zone the time and date will automatically be updated. Use the Select/Scroll knob to scroll through the possibilities and confirm your time zone by pressing the knob.

UTC +00:30:  
UTC +01:00: Madrid, Amsterdam...

#### Daylight savings

Here you can select whether daylight savings should be on or off.

#### Note:

If you want to turn off your internet radio we recommend you to press the **Standby** button. Pressing the **On/off** button will reset the time and date to zero. However, your alarm settings will remain.

## SETTING THE ALARM

*You must set the time before you can set the alarm.*

- 1) Press the **Alarm** button.
- 2) Press the Scroll/Select button twice to enable the alarm.
- 3) Turn the Scroll/Select button to **Time**:
- 4) Press to confirm.
- 5) Select the time by turning the Scroll/Select knob and press to confirm.
- 6) Turn the Scroll/Select knob to **Mode** to select alarm mode – either Internet radio or Buzzer
- 7) Turn the Scroll/Select knob to **Preset: Last listened** and press to confirm.  
This function applies only to the Internet radio mode.
- 8) Scroll through the preset station list by turning the Scroll/Select knob.
- 9) Press to confirm your choice.
- 10) Turn the Scroll/Select knob to **Frequency**.
- 11) Scroll through the options available  
**Daily - Once - Weekends - Weekdays**  
and confirm your choice by pressing the Scroll/Select knob.
- 12) Press to confirm.
- 13) Turn the Scroll/Select knob to **Volume**.
- 14) Turn the Scroll/Select knob to select the volume between 1 and 20.
- 15) Press to confirm.
- 16) Turn the Scroll/Select knob to **Save**.
- 17) Press the Scroll/Select knob to save the alarm settings.

Alarm 1: Off [00.00]  
Alarm 2: Off [00.00]

Enable: On  
Time: 00.00

Time: 22.15  
Mode: Internet radio

Preset: Last listened  
Frequency: Daily

Frequency: Daily  
Volume: 10

Volume: 10  
Save


Alarm saved

You can also set the alarm via the menu system.

- 1) Enter Main menu
- 2) Turn the Scroll/Select knob to **Alarms**
- 3) Press to confirm

Sleep  
Alarms

Proceed from item 2) on the previous page.

When your radio is in standby mode you will see the alarm icon  on the display.

### **Note 1:**

If you make a mistake or regret your selection you can always move back to the previous screen by pressing the **Back** button

### **Note 2:**

The alarm volume level can be adjusted to your favourite level and stored in the memory before turning off the radio. If you set the volume level to minimum you may risk not hearing the alarm when it occurs.

### **Alarm 2**

is set in the same way as alarm 1.

## **SNOOZE FUNCTION**

The Snooze function is an option related to the alarm function. When an alarm sounds you can stop it temporarily by pressing the **Snooze** button.

- 1 press = 5 minutes
- 2 presses = 10 minutes
- 3 presses = 15 minutes
- 4 presses = 30 minutes

## ADDITIONAL OPTIONS

The following 4 sub menus can be accessed from the menu **System settings**.

### LANGUAGE

You have the option of selecting your display language between 12 different languages.

- 1) Turn the Scroll/Select knob to **Language**
- 2) Press to confirm.
- 3) Scroll through the language list by turning the Scroll/Select knob and confirm your choice by pressing it.

Alarms  
System settings

Time/Date  
Language

### LCD STANDBY BACKLIGHT

You can select whether you want the LCD standby backlight to be On or Off.

- 1) Turn the Scroll/Select knob to **LCD standby backlight**
- 2) Press to confirm.
- 3) Select your desired option and confirm by pressing the Scroll/Select knob.

Language  
LCD standby backlight

### FACTORY RESET

Performing a factory reset will completely reset your radio's memory, clearing all WEP/WPA/WPA2 codes and your user settings. This will return your Internet radio to its default factory settings.

- 1) Turn the Scroll/Select knob to **Factory Reset**
- 2) Press to confirm.
- 3) Select **YES** if you want to proceed.

LCD standby backlight  
Factory Reset

## ADDITIONAL OPTIONS *(continued)*

### SOFTWARE UPDATE

We recommend you to check regularly for software updates.

- 1) Turn the Scroll/Select knob to **software update**
- 2) Press to confirm.

You have two options:

Select **Auto-check setting** to let the radio make the checking automatically every of 15 minutes

or

you can select **Check now** for immediate update, if any.

Please note that software updates can take several minutes.

**Therefore - do not switch off you Internet radio until the update procedure is fully completed.**

**If you turn off the radio during software update it may cause permanent damage to your Internet radio.**

### INFO

Here you can see your Internet radio's present software version and its ID-number.

Factory Reset  
Software update

Software update  
Info

## REGISTRATION

Having a registered user account you will benefit from different options of controlling your radio from the Frontier website. First step is to register at [www.wifiradio-frontier.com](http://www.wifiradio-frontier.com).

You can register as many radios as you want under the same account. The only thing you need is to register the unique access code of each individual radio.


You can find the access code when your radio is in the Internet Radio Mode. When listening to the Internet radio you should press the Back button and then access the *Help* menu. Select the option *Get Access Code* and you will see the unique access code in the format SYKTAHW. We should strongly recommend you to log on and register as a user to enable you to get full benefit of your radio.

You can add as many radios as you like under the same account and synchronize your favourites with other radios. Select *"My preferences"* on the website to add more radios. Enter the access code which you have retrieved from the specific Internet radio and add it to your account.

### My favourites

The *"My favourites"* is a list you can create when visiting the Frontier website. You can search for a radio station; browse through by genre or location – exactly in the same way as on your Internet radio. When you find a station you like you can add it to *"My favourites"* just by pressing/holding the Scroll/Select knob.

The *"My favourites"* list you can see on the Frontier website will be the same as you can access from the menu *My favourites* in the menu of your Internet radio. The *"My favourites"* menu is limited to the stations already on the Frontier station list.

When browsing through the list and finding a station that you want to add as a favourite, just click the  icon, and the station will be added to your favourites list. The station can now be seen – and selected – from the menu *My favourites* on your Internet radio.

If you know a station that is streamed, but is not in the station list, you can add the station to the Internet radio if it complies with the streaming format supported by the radio. First make sure to copy the URL of the stream. Access the menu *"My added stations"* and select *"Add another station"*. Fill in the requested fields, and you will now be able to find the added station by accessing the menus *Internet Radio* and *My added stations* on your Internet radio.

### Requesting a station

If you want to listen to a radio station that is currently not listed in the station list, you can visit the Frontier website at

<http://www.wifiRadio-frontier.com>

and make a request to add the station to the list.

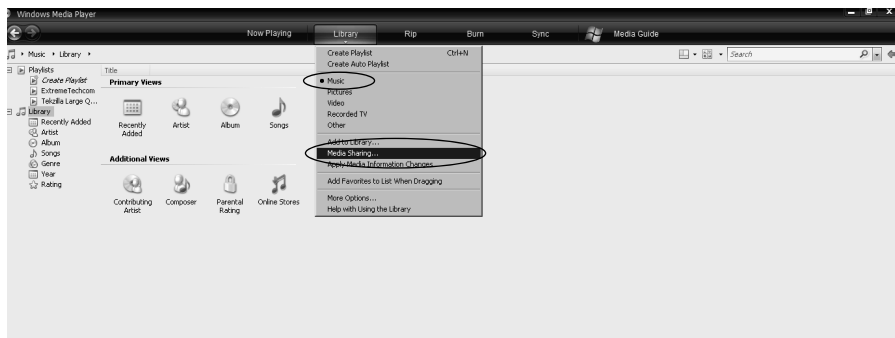
## SET UP MEDIA SHARING IN WINDOWS MEDIA PLAYER 11

After having downloaded and installed Windows Media Player 11 or higher for Windows XP and connected your radio to the network, you must set up media sharing in order to be able to share music with your radio.

You can share music files, such as Windows Media Audio (.wma), MP3 (.mp3), and WAV (.wav) files. Note that audio CDs inserted in your computer cannot be shared. To share a file in your library, the original file must be stored in one of your monitored folders. (By default, the Media Player automatically monitors the folders where most people typically store their digital media files, including the My Music, My Pictures, and My Videos folders.) In addition, play lists such as Windows Media play list (.wpl) and MP3 play list (.m3u) are supported.

**Firewall:** If you have a firewall activated make sure that your internet radio is allowed to connect to the Internet. Otherwise the firewall will not allow the connection to be made from the internet radio to the WMP11 UPnP server. We recommend you to disable the firewall for initial setup described in the following steps 1-5. Afterwards you should enable the firewall and make the necessary permissions.

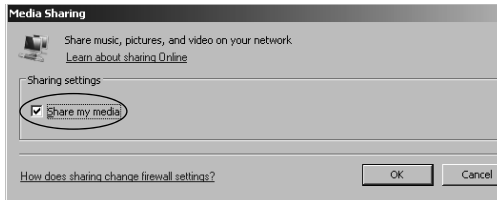
The following steps describe how to set up media sharing in Windows Media Player 11.



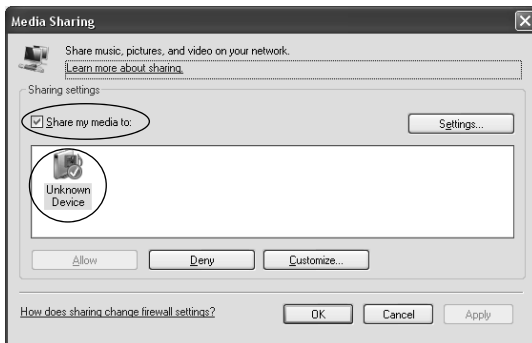
1. In Windows Media Player 11, click the small arrow below the Library tab, and then click **Media Sharing**



2. In the **Media Sharing** dialogue box, select the **Share my media** check box.



3. Check the “Share my media to”: box.



In the list, your radio will be visible as **Unknown Device**.

4. Click **Allow** – the selected device (your internet radio) will now show a green tick
5. Click **OK**.

**Note:**

If your internet radio is not present in the device list, please try to connect your radio by entering

<MAIN MENU> → <SHARED MEDIA> → “Name of your server”.

The radio sends a request to the server and the radio should become visible in the device list, where-  
after you can give it permission to connect to the UPnP server.

For further information please refer to the help file and the homepages below:

<http://www.microsoft.com/windows/windowsmedia/knowledgecenter/howto/mp11/sharemedia.aspx>  
[http://www.microsoft.com/windows/windowsmedia/player/faq/sharing.msp#q20\\_3](http://www.microsoft.com/windows/windowsmedia/player/faq/sharing.msp#q20_3)

## SETTING UP CIFS/SMB SHARING ON PC OR NETWORK ATTACHED STORAGE (NAS)

If you do not want to use an UPnP sharing server on your PC or this feature is not an option on your NAS Box, you can use the CIFS/SMB sharing on these devices. In this way you are able to access such devices with your internet radio.

### Windows XP Sharing

Through the **Simple File Sharing** method, Windows XP lets you share a PC's disks and folders with other computers. This means that if a disk or folder is shared, everyone in the network can access it, and it can be accessed also with your internet radio. As default, the radio is set to use the guest user account when logging on to the computer sharing the music. If this account is disabled, or another account name is used, you will need to change the user name and password accordingly on the radio. The default guest user name is deleted by pressing the **Back** button. Proceed as follows.

1. Enter <MAIN MENU> → <MUSIC PLAYER> → <PC SETTINGS>
2. Select <USERNAME> and type the user name that you use to access your PC.
3. Select <PASSWORD> and type in the password that you use to access your PC.
4. When completed scroll to OK and press the Scroll/Select button to store your entries.

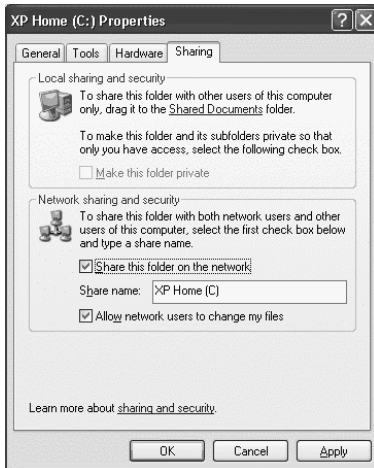
See page 12 how to enter user name and password on the radio.

Now you are ready to access your PC sharing the music. Follow the steps below to enable sharing of a drive or a folder.



Right click the disk or folder that you want to share and select **Sharing and Security**

The disk or folder and its underlying subfolders that you are sharing will be accessible to other network users. If you are sharing an entire disk, Windows XP gives you a warning. The implication of the warning is that it is better to share only a specific folder, since only that folder (and its subfolders) will be accessible to others, whereas the rest of the disk will be inaccessible.



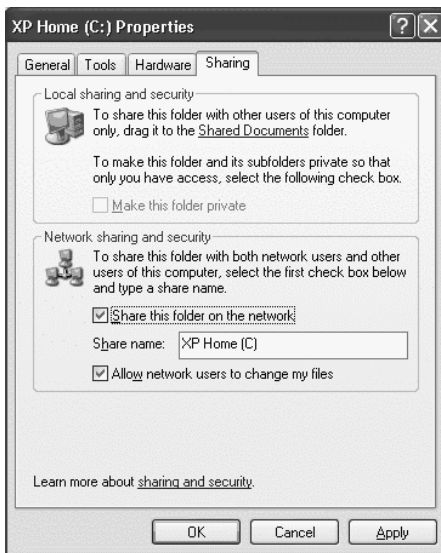
The first time you set up sharing, Windows XP displays a warning, urging you to use the Network Setup Wizard for safety. Click where indicated to either run the Wizard or to do it yourself. It is up to you what you prefer, but we suggest doing it yourself since it is more powerful than using the wizard.



Windows XP displays a new warning. If you want the firewall enabled, select **Use the wizard to enable file sharing**. Otherwise, select **Just enable file sharing**.

For each selected folder you are planning to share, you will see a properties window as showed below. Here you have the option of specifying share name and allowing other users to change the files etc. Are you running the XP Pro version of Windows, the screen will show more “enable/disable” security options, such as number of users allowed to access the folder, allow read/write only etc. For the major part just keep these options default if you are not an experienced user.

When you have selected “Share this folder on the network” and specified a share name, you can go ahead and click OK.

**Note:**

By default, users on other computers have full access to shared folders: This means they can read, write, and delete shared files. If you want them to be able only to read files, you should un-check the box Allow network users to change my files.

**To access the share function on your internet radio you should enter the following menus:**

<Main menu> → <Music Player> → <Shared files>

**VISTA Simple File Sharing**

Please find the necessary information by following the below link:  
<http://technet.microsoft.com/en-us/library/bb727037.aspx>

### CIFS/SMB Internet Radio Access

To access the shared folder from the radio follow the below steps:

1. Access <Main menu> → <Music Player> → <Shared folders>
2. Select the workgroup on which the PC sharing the folders is located. Windows XP default location is Workgroup or MShome. The radio will scan the network for all available devices. This includes Network Shared Printers, NAS Boxes and other PC's on the network.
3. Select the correct PC/NAS Box and access the shared folders and subfolders.

#### Note:

If you get the error message

#### Network error, Select to retry

when trying to access a PC you probably do not have permission to access the PC. Check that the PC Settings on the radio are correct to ensure that you have the correct logon information. You must also check the firewall on the PC to make sure that you have allowed your Internet radio to access the PC or NAS Box.

### NAS- Box (Network Attached Storage)

A NAS unit is essentially a self-contained computer connected to a network, with the sole purpose of supplying file-based data storage services to other devices on the network. The operating system and other software on the NAS unit provide the functionality of data storage, file systems, and access to files, and the management of these functionalities. Therefore you can attach a NAS box to your network and share all your music across the entire network and access the music without the need for your computer to be turned on.

Modern NAS boxes support a wide variety of protocols and services. The two most important ones in relation with Internet radio are the UPnP and CIFS/SMB protocols.

#### UPnP

If you have set up your NAS Box sharing via UPnP you can access the UPnP server as follows:

1. Access <MAIN MENU> → <MUSIC PLAYER> → <SHARED FILES> → Name of your NAS UPnP server.
2. Make sure to allow the device on the NAS Box if necessary.

#### CIFS/SMB

If you wish to set up your NAS Box sharing via CIFS/SMB you will have to setup a user account on the NAS Box, where you can define what folders to share within this specific user account. You should enter the logon information on the Internet Radio in the following way:

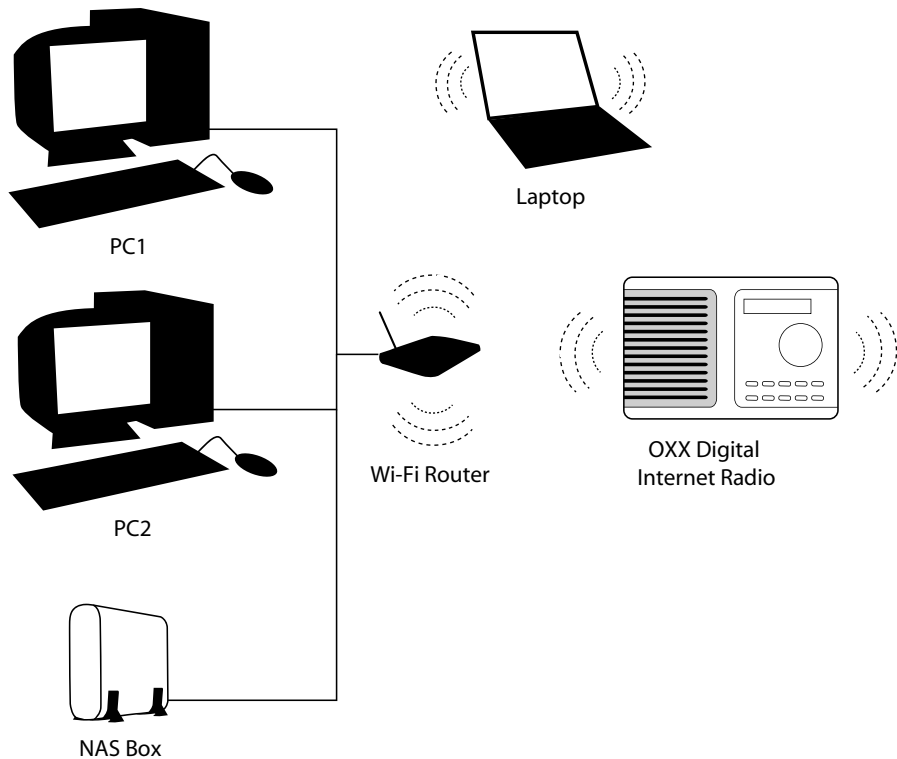
1. Access <MAIN MENU> → <MUSIC PLAYER> → <PC SETTINGS>
2. Select <USERNAME> and type in the same username that you have defined as an account on the NAS Box.
3. Select <PASSWORD> and type in the same password that you have defined as an account on the NAS Box.
4. When completed scroll to OK and press the Scroll/Select button to store your entries.

See page 12 how to enter user name and password on the radio.

**Note:** If you face problems in accessing the NAS Box, you may under PC Settings have to enter the Administrator login information that you use to logon to the NAS Box itself. This is often the case with cheap NAS Box models.

## Typical home network setup

Below you can see how a typical home network situation could be. All the devices connected to the Wi-Fi Router can share music and you are able to access the music files from your OXX Internet Radio.



## SET UP MEDIA SHARING IN MAC OS

Using your radio with a MAC will require Windows File Sharing. MAC OS 9 and earlier versions of the OS will need extra software to use Windows File Sharing, but MAC OS X 10.2 and later versions have Windows File Sharing built into the OS.

### Set up Windows File Sharing on a MAC

- From the 'Dock', click on 'System Preferences'. From the 'System Preferences' window, under the 'Internet & Network' section, click on 'Sharing'.
- From the 'Sharing' window, do the following:
- Under the 'Services' section, enable 'Personal File Sharing' and 'Windows Sharing'. In order to do this, tick the corresponding boxes or click on 'Start' for each of these services.
- Under the 'Firewall' section, switch off the firewall.
- Under the 'Internet' section, switch off 'Internet Sharing'.

### Accounts setup

- From the 'System Preferences' window, in the 'System' section, click on 'Accounts'. Select an account and remember its 'Short Name' and password. This will be used for the Radio to connect to the MAC.

### Directory setup

- From the 'Dock', click on 'Finder'. From 'Finder', click on 'Applications' then 'Utilities'. Click on 'More Info' for 'Directory Access' and ensure that the 'Read/Write' option is enabled. Double-click on 'Directory Access' and enable the following:
  - AppleTalk
  - LDAPv3
  - SLP
  - SMB/CIFS
- For 'SMB/CIFS', click on 'Configure' and select an appropriate workgroup.
- Copy and paste the mp3 files to 'Documents' in the 'Finder' window.
- Turn on 'AirPort' (wireless sharing).
- Wait for a few minutes.

In the 'Media Player' > 'Windows Shares' menu, enter the MAC account's short name and password. The Radio should then be able to connect to the MAC.

## TROUBLE SHOOTING

If you experience any trouble with your wireless Internet radio, you may find it useful to visit the help section on our webpage:

<http://www.oxxdigital.com>

If you are facing trouble connecting your Internet radio to your wireless network, the following steps may help you resolve the problem:

1. Check that a Wi-Fi connected PC can access the Internet (i.e. can browse the web) using the same network.

2. Check that a DHCP server is available, or that you have configured a static IP address on the radio. You can configure a static IP address on your radio using the menu items

- > System settings
- > Network
- > Manual settings
- > Wireless
- > DHCP disable

3. Check that your access point does not restrict connections to particular MAC addresses. You can view the radio's MAC address using the menu items

- > System settings
- > Network
- > View setting
- > MAC address

4. If you have an encrypted network, check that you have entered the correct key or password into the radio. Remember that text-format keys are case sensitive. If, when attempting to connect to an encrypted network, your radio displays:

Network error  
Select to retry

Please ensure that you enter the correct password for the network. If the problem persists, you may need to check your network configuration.

5. If your radio can connect to the network successfully, but is unable to play particular stations, it may be due to one of the following reasons:

- a) The station is not broadcasting at this time of the day (it may be located in a different time zone).
- b) The station has reached the maximum allowed number of simultaneous listeners.
- c) The station is not broadcasting anymore.
- d) The link on the radio is out of date.
- e) The Internet connection between the server (often located in a different country) and you is slow.

Try using a PC to play back the stream via the broadcaster's web site.

If you can play back the station with a PC, use the form at

<http://www.wifiradio-frontier.com>

to notify us to enable us to change the station data used by the radio.



### TECHNICAL SPECIFICATIONS

#### PROCESSOR/MEMORY

Chorus 2, 133 MHz

64 MBit Flash & 32 Mbytes SDRAM

#### DIMENSIONS/WEIGHT

Dimensions: H: 144 mm x L: 212 mm x D: 76 mm

Packaging: H: 190 mm x L: 325 mm x D: 125 mm

Weight: 1.3 kg

#### SPEAKER

Speaker output: 2W

#### NETWORK

Interfaces: 802.11b/g

Network security: WEP, WPA, WPA2

#### SUPPORTED AUDIO FORMATS

Internet radio streams: MP3, WMA, Real Audio

Audio streaming: MP3 (CBR/VBR, up to 320 Kbps), WMA,

AAC (Unprotected)

Playlists supported: M3U, PLS

#### SUPPORTED SERVICES & PROTOCOLS

UPnP, HTML, DHCP, Fixed IP, WLAN, CIFS/SMB

Podcast: Podcast (MP3), ID3 (V1.0 / V2.0)

Internet radio services: Podcasts, On Demand

LCD display: 2 Lines Black/White display

#### FIRMWARE

Incorporated firmware-upgrading option. Ensures that the radio is updated with the latest software and services.

#### MINIMUM REQUIREMENTS FOR INTERNET RADIO

**Connection:** Router with wireless 802.11b/g (broadband internet connection required for internet radio)

#### MINIMUM REQUIREMENTS FOR MEDIA PLAYER STREAMING

**PC connection:** Windows XP or Vista with MediaPlayer 11 or other UPnP servers e.g. Twonky. CIFS/SMB shared folders can be accessed also.

**Mac connection:** Mac OS X 10.3 or higher, UPnP software.

**NAS device:** UPnP compatible hardware (UPnP Server) or CIFS/SMB sharing.

#### LANGUAGES SUPPORTED

English, German, French, Italian, Spanish, Portuguese, Netherlands, Danish, Swedish, Norwegian, and Finnish

VANTAGE

Internet radio

VANTAGE

Internet radio



# FCC Statement

Operation is subject to the following two conditions:

- 1.This device may not cause harmful interference, and
- 2.This device must accept any interference received, including interference that may cause undesired operation.

This device complies with Part 15 of the FCC Rules.

Changes or modifications not expressly approved by the party responsible for compliance could void the user's authority to operate the equipment.

To comply with FCC RF exposure requirements, the device and the antenna for this device must be installed to ensure a minimum separation distance of 20 cm or more from a person's body. Other operating configurations should be avoided.

## **NOTE:**

This equipment has been tested and found to comply with the limits for a Class B digital device, pursuant to Part 15 of the FCC Rules. These limits are designed to provide reasonable protection against harmful interference in a residential installation. This equipment generates, uses and can radiate radio frequency energy and, if not installed and used in accordance with the instructions, may cause harmful interference to radio communications. However, there is no guarantee that interference will not occur in a particular installation.

If this equipment does cause harmful interference to radio or television reception, which can be determined by turning the equipment off and on, the user is encouraged to try to correct the interference by one or more of the following measures:

- Reorient or relocate the receiving antenna.
- Increase the separation between the equipment and receiver.
- Connect the equipment into an outlet on a circuit different from that to which the receiver is connected.
- Consult the dealer or an experienced radio/TV technician for help.