



## **User Guide**

### **Tube Internet Radio**





## Before Starting

Before you are able to use your internet radio, you will need the following items:

- **A broadband internet connection**
- **A wired/wireless access point, or router connected to your broadband internet connection.**

**If your wireless network is configured to use Wired Equivalent Privacy (WEP) or WIFI Protected Access (WPA) data encryption, you will need to know the WEP or WPA code so that you can setup your internet radio to communicate with your wireless network. Consult your network administrator for your WEP or WPA codes.**

- **Before continuing, make sure that your wired/wireless access point or router is powered on, and connected to your broadband internet connection. Consult the manufacturer's guide supplied with your wired/wireless access point or router if you are unsure how to do this.**

# Contents

<b>Before Starting</b>	<b>3</b>	<b>Clock Functions</b>	<b>18</b>
<b>Contents</b>	<b>4</b>	Setting the clock	18
<b>Safety Information</b>	<b>5</b>	Setting the alarm	18
Power Source	5	Setting the sleep timer	19
General	5	<b>Configuration Settings</b>	<b>20</b>
Cleaning	5	Network Config	20
Ventilation	5	Version	20
Servicing	5	Upgrade firmware	20
Sound Levels	6	Language	20
<b>Parts Identification</b>	<b>7</b>	Factory Reset	20
Front view	7	Register	20
Rear view	7	Clock	20
<b>Getting Started</b>	<b>8</b>	Sleep timer	20
Switching on	8	Equalisation	20
Connecting to a wireless network	8	<b>Help and Advice</b>	<b>21</b>
Connection to a wireless network when the SSID is not broadcasted	9	<b>Error Messages</b>	<b>22</b>
Connecting to a wired network	10	<b>Windows 2000 Users</b>	<b>23</b>
The menu structure	11	<b>Technical Specification</b>	<b>24</b>
<b>Using the WI-FI Radio</b>	<b>12</b>	<b>Guarantee and support</b>	<b>25</b>
Connecting to a station	12	<b>Disposal</b>	<b>25</b>
Changing the volume	12		
Exiting a station	12		
Connecting to an on demand radio station	13		
On demand features	13		
Saving a station to a preset memory	13		
<b>Using the Media Player</b>	<b>14</b>		
Supported file types	14		
Setting up your PC	14		
Connecting the WI-FI radio to your PCs shared folder	15		
Connecting the WI-FI radio to your PC using UPnP mode	15		
Playing your media files	16		
Media player controls	16		
Removing tracks from the queue	17		
Playing tracks in a random order	17		
Repeating all tracks	17		

## Safety Information

### Power Source

This product requires a 230-240 v AC, 50Hz mains supply. Do not use any other supply.

### General

- Position the mains cable so that it cannot be walked on or pinched by other items placed on or against them.
- Do not use this product in humid or damp conditions.
- Do not allow this product to get wet.
- Do not expose this product to dripping or splashing.
- Do not place water filled objects such as vases on top of this product.
- Do not place naked flame sources, such as candles on top of this product.

### Cleaning

- Always unplug this product from the mains supply before you clean it.
- Do not use liquid or aerosol cleaners.
- This product should be cleaned with a soft, barely damp cloth.

### Ventilation

- The slots and openings on this product are for ventilation purposes. Do not cover or block them as this could cause overheating.
- Never let children push anything into the slots or openings in the case.

### Servicing

- There are no user-serviceable parts in this product.
- If servicing is required, always refer to qualified service personnel.
- Always consult the helpline (stated on the warranty card) if you are ever in doubt about the installation, operation or safety of this product.

## Safety Information

### Sound Levels

Your hearing is very important to you and to us, so please take care when using this product. It is strongly recommended that you follow the listed guidelines in order to prevent possible damage or loss of hearing.

#### Establish a safe sound level

1. Over time your hearing will adapt to continuous loud sounds and will give the impression that the volume has in fact been reduced. What seems normal to you may in fact be harmful. To guard against this **before your hearing adapts**, set the volume to a low level.
2. Slowly increase the level until you can hear comfortably and clearly and without distortion.
3. Damage to your hearing is accumulative and is irreversible. Any ringing or discomfort in the ears indicates that the volume is too loud.
4. Once you have established a comfortable listening level, **do not increase the sound level**.

The examples below may help you in recognising just how loud you have set the volume.

30dB	Quiet library, soft whisper.
40dB	Living room, fridge freezer, bedroom away from traffic.
50dB	Normal conversation, quiet office, light traffic.
60dB	Electric sewing machine.
70dB	Vacuum cleaner, hair dryer, noisy restaurant.
<b>THE FOLLOWING NOISE CAN BE HARMFUL UNDER CONSTANT EXPOSURE</b>	
80dB	Average city traffic, alarm clock buzzer at 2 feet, food mixer.
90dB	Motorcycling, heavy goods vehicle, petrol lawn mower.
100dB	Pneumatic drill, chain saw, refuse vehicle, disco/night club.
120dB	Rock band concert, thunderclap.
<b>PERMANENT LOSS OF HEARING – THRESHOLD OF PAIN</b>	
140dB	Gunshot at 2 feet away.
180dB	Rocket launching pad.

## Parts Identification

### Front view



<b>1</b>	Left speaker.	<b>9</b>	Select button.
<b>2</b>	3.5mm Headphone socket.	<b>10</b>	Back button.
<b>3</b>	Preset 1/6. stop button.	<b>11</b>	Shift button.
<b>4</b>	Preset 2/7. play/Pause button.	<b>12</b>	Reply button.
<b>5</b>	Preset 3/8. skip back button.	<b>13</b>	Standby button.
<b>6</b>	Preset 4/9. skip forwards button.	<b>14</b>	Right speaker.
<b>7</b>	Preset 5/10. browse button.	<b>15</b>	Remote control sensor.
<b>8</b>	Multifunction and volume control.	<b>16</b>	Information display.

### Rear view

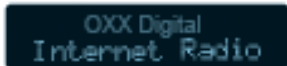


<b>17</b>	DC In.	<b>19</b>	Right audio out (red).
<b>18</b>	Left audio out (white)	<b>20</b>	Ethernet (wired network) connection.

## Getting Started

### Switching on


1. Using the power adapter supplied, connect to the socket on the rear of the product labelled '7.5V DC', and switch on at the mains supply.
2. After a brief pause the information display will light up as displayed below.




0XX Digital  
Internet Radio

### Connecting to a wireless network

When switched on for the first time, you will need to enter your wireless network details. To setup your wireless network complete the following procedure:

1. Press the 'STANDBY' button and wait until the following is displayed.  


<Scan for netwo>
2. Press the 'SELECT' button.  


Scanning  
|||||||
3. When scanning is complete, the name of a wireless network will be shown.
  - If your wireless network is not found, check that your wireless access point or router is switched on and connected to your broadband internet connection.



< JimsRouter >

If the SSID (name of your wireless access point) is not displayed, turn the multifunction control to the right until the correct one is shown.

4. When the correct wireless network is shown, press the 'SELECT' button.

- If your wireless network uses WEP or WPA encryption, one of the following screens will display.



Enter WEP Key



Enter WPA Key

- If your wireless network does not use WEP or WPA go to step number 7 below.

5. When the following screen is displayed, turn the multifunction control to enter your WEP/WPA key. Use the 'SELECT' button to confirm the digit chosen.



<END> 0 1234

6. When the WEP/WPA key has been entered, turn the multifunction control so that 'END' is selected. Press the 'SELECT' button to confirm.



<0~ END >0>  
Password

7. The WI-FI radio will now connect to your wireless network.



Connecting to  
network

8. To listen to a station see "Connecting to a station" on page 12.



## Getting Started

### Connecting to a wireless network when the SSID is not broadcasted

To setup your wireless network when your router does not broadcast the SSID (network name), complete the following procedure:

1. Press the '**STANDBY**' button and wait until the following is displayed.

A small LCD screen with a dark background and green text. The text reads "&lt;Scan for netwo&gt;".

2. Turn the multifunction control until the following screen is displayed. Press the '**SELECT**' button to confirm.

A small LCD screen with a dark background and green text. The text reads "&lt;Enter Network &gt;".

3. When the following screen is displayed, turn the multifunction control to enter your SSID (network name). Use the '**SELECT**' button to confirm the digit chosen.

A small LCD screen with a dark background and green text. The text reads "&lt;END&gt; 0 1234".

4. When the SSID has been entered, turn the multifunction control so that '**END**' is selected. Press the '**SELECT**' button to confirm.

A small LCD screen with a dark background and green text. The text reads "&lt;END&gt; JimsRouter".

5. Your WI-FI radio will now search the network.

A small LCD screen with a dark background and green text. The text reads "Finding network" followed by a progress bar consisting of eight vertical bars of varying heights.

- If your wireless network uses WEP or WPA encryption, one of the following screens will display. Press the '**SELECT**' button to confirm.

A small LCD screen with a dark background and green text. The text reads "Enter WEP Key".

A small LCD screen with a dark background and green text. The text reads "Enter WPA Key".

- If your wireless network does not use WEP or WPA go to number 9.

6. When the following screen is displayed, turn the multifunction control to enter your WEP/WPA key. Use the '**SELECT**' button to confirm the digit chosen.

A small LCD screen with a dark background and green text. The text reads "&lt;END&gt; 0 1234".

7. When the WEP/WPA key has been entered, turn the multifunction control so that '**END**' is selected. Press the '**SELECT**' button to confirm the digit chosen.

A small LCD screen with a dark background and green text. The text reads "&lt;END&gt; Password".

8. The WI-FI radio will now connect to your wireless network. The following screens will display on the WI-FI radio.

A small LCD screen with a dark background and green text. The text reads "Connecting to network".

A small LCD screen with a dark background and green text. The text reads "Network Ok".

A small LCD screen with a dark background and green text. The text reads "&lt; Stations &gt;".

9. To listen to a station see "Connecting to a station" on page 12.

Should you need to enter a new network in the future, these options can be edited in the 'Edit Config' sub menu. Please refer to the menu structure diagram on the next page.

### Connecting to a wired network

Use the following procedure to connect the WI-FI radio to a wired router:

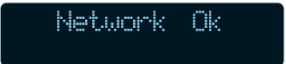
1. Connect an ethernet cable (not supplied) between the ethernet port on the rear of the WI-FI radio and a wired router.
2. Power On the WI-FI radio.
3. The connection between the WI-FI radio and the router will be setup automatically. The following screens will display on the WI-FI radio.



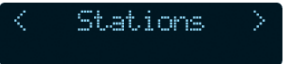
Initialising  
Network



Connecting to  
network



Network: Ok



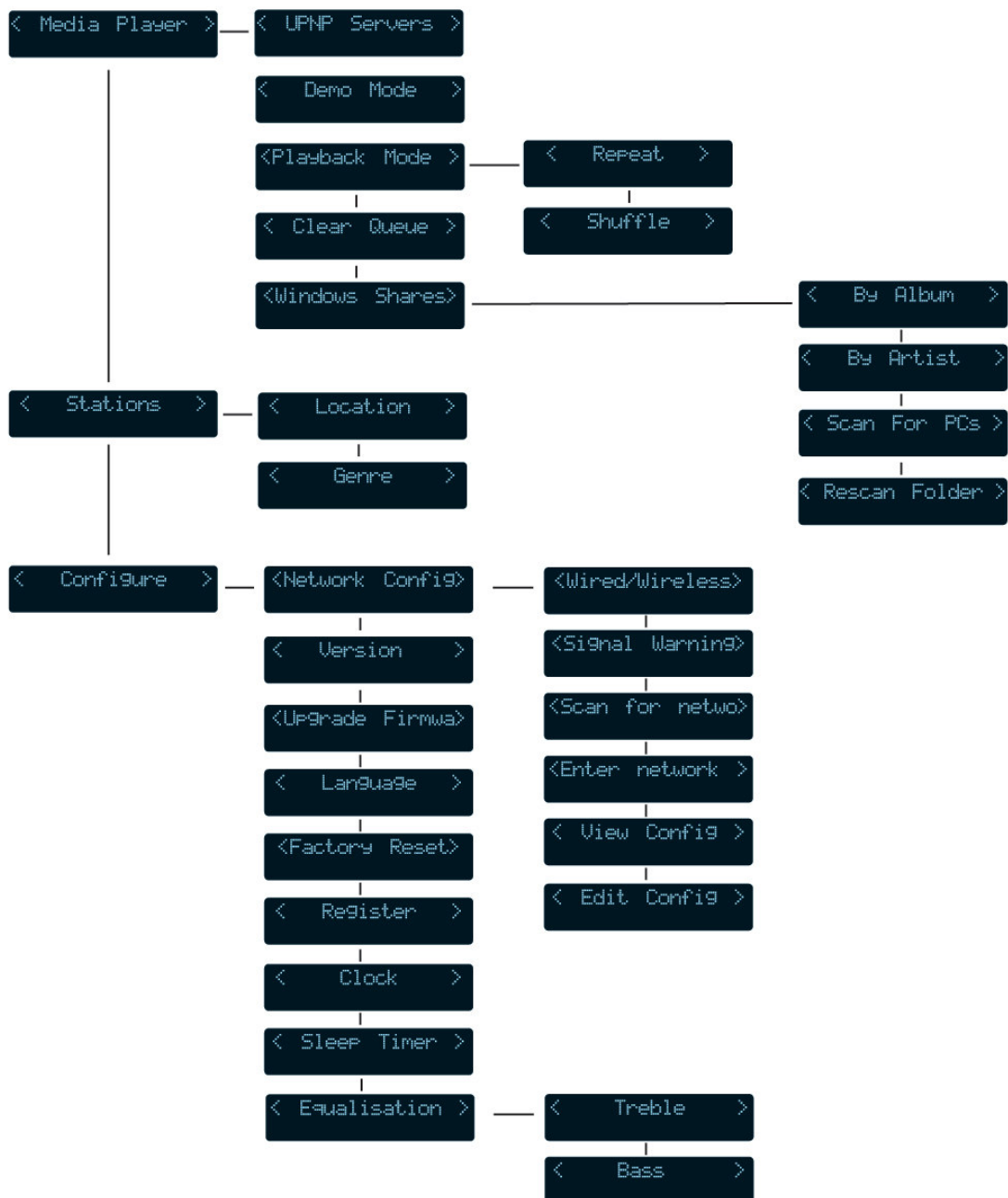
< Stations >

4. To listen to a station see "Connecting to a station on page 12".

## Getting Started

### The menu structure

Navigate through the options using the multifunction control, confirming each step using the **'SELECT'** button.



## Using the WI-FI Radio

### Connecting to a station

1. Turn the multifunction control until the following screen is displayed. Press the 'SELECT' button to confirm.

A monochrome LCD screen with the text "&lt; Stations &gt;" centered between two arrowheads.

2. You can choose to select a station by either location or genre. Use the multifunction control to choose, then press 'SELECT' to confirm.

A monochrome LCD screen with the text "&lt; Location &gt;" centered between two arrowheads.

A monochrome LCD screen with the text "&lt; Genre &gt;" centered between two arrowheads.

- **Navigate through the options using the multifunction control, confirming each step using the 'SELECT' button. The following example connects to a station using the Genre method.**

3. Select a Genre type. Press the 'SELECT' button to confirm.

A monochrome LCD screen with "&lt; 80s &gt;" on the top line and "48 Stations" on the bottom line.

4. Select the desired station. Press the 'SELECT' button to confirm.

A monochrome LCD screen with the text "&lt; ABC FM &gt;" centered between two arrowheads.

5. When you connect to an internet radio station, the blue menu control indicator will flash and a connecting screen will display.

A monochrome LCD screen with "ABC FM" on the top line and "Connecting /" on the bottom line.

6. Before the station begins to play, the wireless radio will start to buffer the signal so that playback is not interrupted when other devices are using the wireless network.

A monochrome LCD screen with "RealOne Enabled" on the top line and "Buffering 13%" on the bottom line.

However, please note that there may be cases when playback is interrupted when the router is being used by other devices. This does not indicate a fault with the Internet radio.

7. When the station starts to play the blue volume control indicator will flash and a connecting screen will display.

A monochrome LCD screen with "ABC FM" on the top line and "32 kbps WMA" on the bottom line.

The bit rates are set by the radio stations and will vary between stations. The higher the bit rate, the better the sound quality.

### Changing the volume

When a station is playing, you can use the multifunction control to change the volume.

- **To turn the volume down, turn the control anticlockwise.**
- **To turn the volume up, turn the control clockwise.**

The display will show the volume level as it is changed.

A monochrome LCD screen with "Volume" on the top line and a bar graph consisting of eight vertical bars of varying heights on the bottom line.

### Exiting a station

To exit a station, press the 'BACK' button. You can now use the multifunction control to select a new station.

## Using the WI-FI Radio

### Connecting to an on demand radio station

Some radio stations offer on demand services, which can feature highlights, previous shows or special events.

- **When you connect to a station that offers an on demand facility you will have two options.**

< Live >

< On Demand >

- **Navigate through the options using the multifunction control, confirming each step using the 'SELECT' button. The following example connects to 'The best of Chris Moyles' on Radio 1.**

1. Turn the multifunction control until the following screen is displayed.

< Stations >

2. Select the desired station.

< Radio 1 >

3. Select 'On Demand'.

< On Demand >

4. Select the desired on demand program.

<The Chris Moyl>

5. Select the day.

< MON >





**This may not be an option depending on the on demand service that you have chosen.**

6. Choose the start time. If you want to play from the beginning, press the 'SELECT' button to listen from that point.

Start Time  
< 00:00:00 >

### On demand features

When listening to an on demand service, you can use the following features.

Button	Function
1/6 	Press this button to stop playback.
2/7 	Press this button to pause playback. To continue listening to the station press the button again.
3/8 4/9  	Press these buttons to rewind or fast forward by 30 seconds with each press. Turn the multifunction control to set the exact time.

### Saving a station to a preset memory

Your WI-FI radio can store a maximum of 10 stations. To store a station follow the procedure below:

1. To store presets 1-5, listen to the station that you wish to store, then hold the relevant preset number button to store the station. When the station is stored successfully the following screen will display.

Assigned To  
Preset 1

2. To store presets 6-10, listen to the station that you wish to store, then press and release 'SHIFT' and then hold the relevant preset number button to store the station. When the station is stored successfully the following screen will display.

Assigned To  
Preset 6

## Using the Media Player

### Supported file types

The media player allows you to play audio files that are stored on a networked PC, using Windows 2000 or Win XP.

The following file formats are supported:

- .MP3
- .WMA
- .RM
- .OGG
- .AAC
- .M3U

**DRM encrypted files cannot be played back using the built-in media player. If you try to play an encrypted file 'Protected' will be displayed. Most tracks purchased from online music stores are encrypted and therefore cannot be played using your WI-FI Radio.**

### Setting up your PC

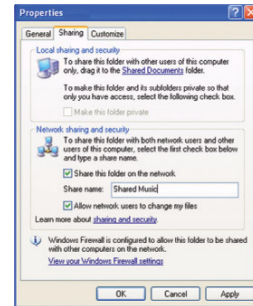
**Windows XP Pro users should select the simple file sharing option from Windows Explorer (for further information refer to the help system supplied with Windows XP Pro). If your PC is not configured to use simple file sharing or you are using Windows 2000, please refer to "Windows 2000 Users" on page 23.**

To enable your WI-FI radio to playback your audio files, you need to share the folder in which they are stored.

To setup your shared folders complete the following procedure on your computer:

1. Open **'My Computer'** from the **'Start'** menu.
2. Browse to the folder where your audio files are stored.
3. Using the mouse, right click on the folder and select **'Sharing and Security'**.

4. In the 'Network sharing and security' section, select the 'Share this folder on the network' button and enter a share name. An example is shown below using Win XP.



**'Allow network users to change my files' must also be selected.**

5. Click the **'Apply'** button.
6. Click the **'OK'** button to close the window.
7. The folder icon will change, to visually show you that the folder is shared.



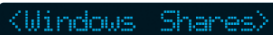
## Using the Media Player

### Connecting the WI-FI radio to your PCs shared folder

1. Log-on to your PC, using the user account where the media files are stored.
2. Turn the multifunction control until the following screen is displayed. Press the **'SELECT'** button to confirm.



3. Select the option for **'Windows Shares'**. Press the **'SELECT'** button to confirm.



4. Select the option for **'Scan for PCs'**. Press the **'SELECT'** button to confirm.



5. Your WI-FI radio will now search your wireless network for PC's that are sharing music files.



6. The name of the PC will be shown in the display. If there is more than one PC found, use the multifunction control to select the required PC. Press the **'SELECT'** button to confirm.



7. Your WI-FI radio will now search for shared folders on the specified PC.



8. The shared folder name will be displayed. If there is more than one shared folder, use the multifunction control to select the required folder. Press the **'SELECT'** button to confirm.



9. Your WI-FI radio will now scan the folder for available files.



10. To play your files, see "Playing your media files" on page 16.

### Connecting the WI-FI radio to your PC using UPnP mode

To use Universal Plug and Play(UPnP) mode, you will need to have previously setup the following:

- Make sure that your router is UPnP compatible and that UPnP mode has been enabled.
- You have installed on your PC Microsoft Media Player 11, Microsoft Media Connect (for PCs with Microsoft Windows Media Player 10 or earlier) or a third party UPnP client on the PC that hosts your media library.

You may need to consult the manufacturer's user guide that was supplied with your router or UPnP client software if you are not sure how to enable these features.

1. Make sure that the PC where the media files are stored is switched on, and the above requirements have been installed and enabled.
2. Turn the multifunction control until the following screen is displayed. Press the **'SELECT'** button to confirm.

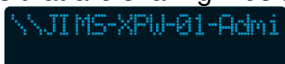


3. Select the option for **'UPnP Servers'**. Press the **'SELECT'** button to confirm.



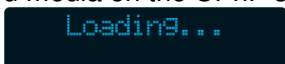
## Using the Media Player

4. Your WI-FI radio will now search your wireless network for UPnP servers/clients that are sharing music files.

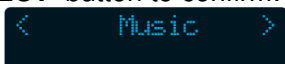
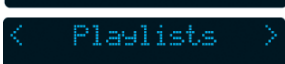


5. Select the UPnP server that you want to connect to. Press the **'SELECT'** button to confirm.

6. Your WI-FI radio will now search for shared media on the UPnP server.



7. You can select either to play the files by music category or by using a predefined playlist. Use the multifunction control to select the required option. Press the **'SELECT'** button to confirm.

8. To play your files, see "Playing your media files" on page 16.

### Playing your media files

**DRM encrypted files cannot be played back using the built-in media player. If you try to play an encrypted file \*Protected\* will be displayed.**

- After you have scanned your shared folder, or connected to a UPnP server you can play your media files. If you have not yet scanned your folder, or connected to a UPnP server refer to the procedures on the previous pages.

1. You can choose to playback your files by using one of the following options;

- Album Artists
- Albums
- All Artists
- All Music
- Composers
- Contributing Artists
- Folders
- Genre
- Music Playlists
- Rating






2. Select the relevant option from the list above, then press the **'SELECT'** button to confirm.

3. Choose the relevant sub category using the multifunction control, then press the **'SELECT'** button to confirm.

4. Your selection will now be added to the queue, and the first track will begin to play.

### Media player controls

When listening to your media files, you can use the following features.


Button	Function
1/6 	Press this button to stop playback.
2/7 	Press this button to pause playback. To continue listening to the media file press the button again.
3/8  4/9 	Press these buttons to skip backwards or skip forwards to a different media file.
5/10 	If you are listening to a series of media files, press the browse button to view the list that is to be played. If you want to skip to a different track, use the multifunction control, then press <b>'SELECT'</b> to confirm.



## Using the Media Player

### Removing tracks from the queue

1. Press the '**BROWSE**' button.
2. Turn the multifunction control to select the track that you want to remove.
3. Press and hold the '**STOP**' button for 2 seconds.
4. Turn the multifunction control so that '**YES**' is highlighted then press the '**SELECT**' button to confirm.
5. Turn the multifunction control so that '**YES**' is highlighted then press the



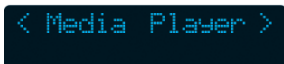
Delete Track?  
YES NO



Removed From  
Queue

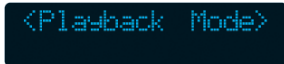
### Playing tracks in a random order

1. Press back repeatedly until the main menu is reached. Turn the multifunction control until the following screen is displayed. Press the '**SELECT**' button to confirm.



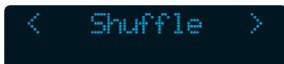
< Media Player >

2. Select the option for '**Playback Mode**' using the multifunction control. Press the '**SELECT**' button to confirm.



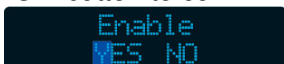
< Playback Mode >

3. Turn the multifunction control until '**Shuffle**' is displayed. Press the '**SELECT**' button to confirm.



< Shuffle >

4. Turn the multifunction control so that '**YES**' is highlighted then press the '**SELECT**' button to confirm.



Enable  
YES NO

5. Your tracks will now be played back in a random order.

**To remove random playback, follow the same procedure, but select 'YES' when the display shows 'Disable'.**

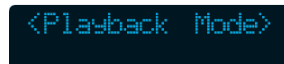
### Repeating all tracks

1. Press back repeatedly until the main menu is reached. Turn the multifunction control until the following screen is displayed. Press the '**SELECT**' button to confirm.



< Media Player >

2. Select the option for '**Playback Mode**' using the multifunction control. Press the '**SELECT**' button to confirm.



< Playback Mode >

3. Turn the multifunction control until '**Repeat**' is displayed. Press the '**SELECT**' button to confirm.



< Repeat >

4. Turn the multifunction control so that '**YES**' is highlighted then press the '**SELECT**' button to confirm.



Enable  
YES NO

5. All tracks will now be played repeatedly until the function is turned off.

**To remove repeated playback, follow the same procedure, but select 'YES' when the display shows 'Disable'.**

## Clock Functions

### Setting the clock

The clock on the WI-FI radio will set automatically once connected to the internet, however, should you need to adjust this setting, proceed as follows;

1. Select '**Configure**' from the main menu, and press '**SELECT**' to confirm.

A black LCD screen with green text displaying '&lt; Configure &gt;'.

2. Turn the multifunction control until '**Clock**' is displayed. Press '**SELECT**' to confirm.

A black LCD screen with green text displaying '&lt; Clock &gt;'.

3. Turn the multifunction control until '**Set time**' is displayed. Press '**SELECT**' to confirm.

A black LCD screen with green text displaying '&lt; Set Time &gt;'.

4. Turn the multifunction control to set the hour. Press '**SELECT**' to confirm.

A black LCD screen with green text displaying 'Set Time' and '00:21'.

5. Turn the multifunction control to set the minutes. Press '**SELECT**' to confirm.

A black LCD screen with green text displaying 'Set Time' and '10:21'.

6. The set time will be displayed.

A black LCD screen with green text displaying 'Time Set:' and '10:46'.

### Setting the alarm

Before setting the alarm, make sure that the clock is correct.

To set the alarm, proceed as follows;

1. Select '**Configure**' from the main menu, and press '**SELECT**' to confirm.

A black LCD screen with green text displaying '&lt; Configure &gt;'.

2. Turn the multifunction control until '**Set Alarm**' is displayed. Press '**SELECT**' to confirm.

A black LCD screen with green text displaying '&lt; Set Alarm &gt;'.

3. Ensure that '**YES**' is highlighted, then press '**SELECT**' to confirm.

A black LCD screen with green text displaying 'Enable Alarm' and 'YES NO'.

4. Turn the multifunction control to set the hour. Press '**SELECT**' to confirm.

A black LCD screen with green text displaying 'Set Alarm' and '11:21'.

5. Turn the multifunction control to set the minutes. Press '**SELECT**' to confirm.

A black LCD screen with green text displaying 'Set Alarm' and '11:35'.

6. The alarm time will be displayed.

A black LCD screen with green text displaying 'Alarm Set:' and '11:35'.

7. Press the '**ON/OFF**' button. The display will show two times.

8. The time on the left is the current time and the time on the right is the alarm time. When the time on the right is reached, your WI-FI radio will turn on and play the station or track that you were last listening to.

A black LCD screen with green text displaying 'Radio' and '10:46 (11:35)'.

### Setting the sleep timer

The sleep timer is used to turn off the WI-FI radio after a specified amount of time.

To set the sleep timer, proceed as follows;

1. Select '**Configure**' from the main menu, and press '**SELECT**' to confirm.

A small LCD screen with a black background and green text. The text reads "&lt; Configure &gt;" with the word "Configure" centered between two green arrow symbols pointing left and right.

2. Turn the multifunction control until '**Sleep Timer**' is displayed. Press '**SELECT**' to confirm.

A small LCD screen with a black background and green text. The text reads "&lt; Sleep Timer &gt;" with the words "Sleep Timer" centered between two green arrow symbols pointing left and right.

3. Turn the multifunction control to set the amount of time before your WI-FI radio will turn off. Press '**SELECT**' to confirm.

A small LCD screen with a black background and green text. The top line reads "Sleep Timeout" and the bottom line reads "&lt; 02:45:00 &gt;" with the time "02:45:00" centered between two green arrow symbols pointing left and right.

4. 'Alarm Set' will be displayed to confirm that the timer has been set. In the example above the WI-FI radio will turn off after 2 hours and 45 minutes.

A small LCD screen with a black background and green text. The text reads "Set." in a simple, sans-serif font.

## Configuration Settings

The following settings can all be accessed from the configuration menu. Use the multifunction control to navigate through the menu system, and change settings. Press the **'SELECT'** button to confirm.

### Network Config

This menu enables you to setup and view your network configuration settings. These settings are used when setting up your network and are explained in "Switching on" on page 8.

### Version

This menu shows you the version numbers of the built-in firmware in your WI-FI radio. These version numbers are helpful when calling the customer helpline.

### Upgrade firmware

This menu enables you to upgrade the firmware in your WI-FI radio. When you press the **'SELECT'** button your WI-FI radio will search for available upgrades.

### Language

This menu enables you to change the menu language used in your WI-FI radio.

### Factory Reset

This menu enables you to reset your WI-FI radio. When your WI-FI radio is reset you will lose your stored radio stations, clock settings and network settings.

Refer to "Switching on" on page 8 for help with re-setting up your WI-FI radio.

### Register

The 7 digit key is device specific and is required when you subscribe to premium content services.

### Clock

See "Setting the clock" on page 18.

### Sleep Timer

See "Setting the sleep timer" on page 19.

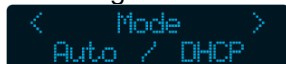
### Equalisation

The equalisation menu enables you to change the Bass and Treble settings.

- **If you have problems connecting your WI-FI radio to your wireless network, these steps may help you solve the problem;**

1. Is your wireless access point or router connected to your broadband connection and switched on?
2. Can you connect your PC to your wireless network using a wireless link?
3. Has the WEP or WPA passwords been entered into the WI-FI radio correctly?
4. Does your router use a DHCP server? Check that DHCP server is enabled on your WI-FI radio.

Go to Configure > Network Config > View Config. The following should be displayed.



5. Check that your firewall is not blocking the following UDP and TCP ports;
  - 80
  - 554
  - 1755
  - 5000
  - 7070
6. Check that your access point or router is not restricting the MAC address of the WI-FI radio. Your MAC address can be found by going to: Configure > Network > Config > View Config > Mac Address.

- **If your WI-FI radio can connect to your wireless network successfully, but cannot play a radio station it may be due to one of the following causes;**

1. The station is not broadcasting at this time of the day.

2. The station has reached the maximum allowed number of simultaneous connections.
3. The station is not broadcasting any more.

- **The media files being played on my WI-FI radio have broken audio.**

1. Please ensure that your network connection is reliable and that there is not any interference from any neighbouring networks. If you think that this could be possible, then you may find it helpful to change the router's channel number.

- **The WI-FI radio is unable to find any PC's sharing media on the local network.**

1. Check that there are PC's sharing media on the local network.
2. If the PC's have a firewall installed, check that a) the firewall is allowing all connections from the local network and b) the firewall is allowing Netbios traffic. (You may need to consult the documentation that was supplied with your router if you are unsure how to do this).
3. Check that other PC's are able to see the server from which you are trying to share your files.
4. Check that 'File and Printer Sharing For Microsoft Networks' is installed and bound to the local network interface.
5. Make sure that the 'Server' service that provides file and print sharing support is enabled and currently running. See Control Panel > Administrative Tools > Services.

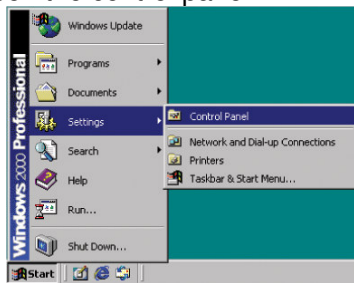
Error Message	Solution
Protected	The user has selected to play a media file that is encrypted. Encrypted tracks can not be played back using the media player. See "Connecting the WI-FI radio to your PC using UPnP mode" on page 15.
Queue Full	The user has selected to add a further track to the queue but the queue is already full. Remove unwanted tracks from the queue. See "Removing tracks from the queue" on page 17.
Connection Failed	The WI-FI radio could not connect to the Shared Folder selected by the user. Setup the shared folder again. See "Connecting the WI-FI radio to your PCs shared folder" on page 15.
DHCP DNS Data Invalid	The WI-FI radio can not connect to a valid DNS server. Check that the WI-FI radio is DHCP enabled. See item 4 on page 21.
DHCP Failure or Wrong Key	The WI-FI radio has not been allocated a valid IP address. Check that your wireless router or access point is configured as a DHCP server. Refer to the manufacturer's documentation supplied with your wireless router or access point.
No Valid PC Selected	The user has attempted to access shared files on a PC. See "Connecting the WI-FI radio to your PCs shared folder" on page 15.
No Stations List Available	The WI-FI radio does not have a copy of the station list in memory. The WI-FI radio will automatically update the station list if this occurs.

# Windows 2000 Users

If your PC is running Windows 2000, it is recommended that you setup a new user that shares the contents of it's folder with all users of the PC. Music files stored by this user can then be saved and accessed by all users and the WI-FI radio.

1. Logon to Windows 2000 as the **'administrator'**.

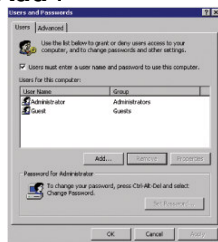
2. Open the control panel.



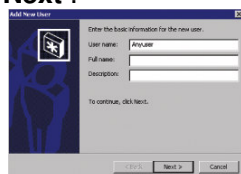
3. When the control panel has opened, double click the **'users and passwords'** icon.



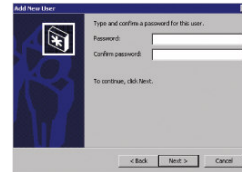
4. Select **'Add'**.



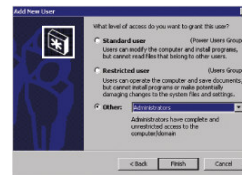
5. Enter a name for the new user, then select **'Next'**.



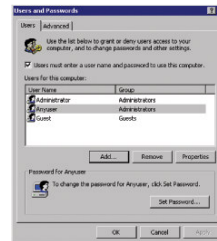
6. Enter a password and confirm , then select **'Next'**. If you do not require a password for this user select **'Next'**.



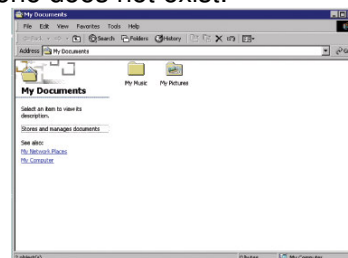
7. Select **'Others'** and make sure that **'administrators'** is selected. Select **'Finish'**.



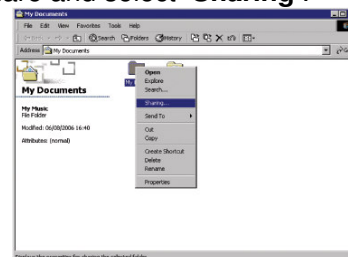
8. Your new user account will now be listed. Select **'OK'** to close the window.



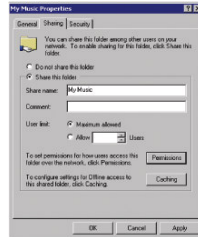
9. Browse to where the folder is located on your hard drive. You may need to create a new folder for your media files if one does not exist.



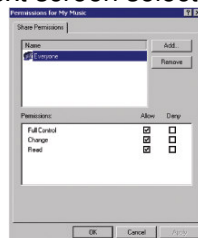
10. Right click on the folder that you wish to share and select **'Sharing'**.



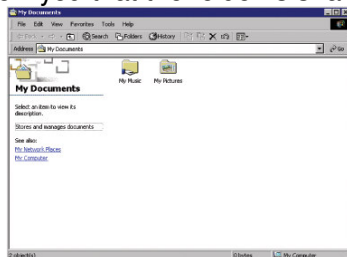
11. Select **'Share this folder'** and enter a share name. Set the user limit to **'Maximum allowed'**, then select **'Apply'**.



12. At the next screen select **'OK'**.



13. The folder icon will change to visually show you that the folder is shared.



**You will now need to copy your media files into your shared folder so that they can be accessed by other users on the PC and the WI-FI radio. For further information on setting up users on your PC refer to the help system supplied with Windows 2000.**

### Technical Specifications

Power Supply AC at 50Hz 230-240V

Standby Power Consumption 7.8 W

Power Consumption 8.0 W

Wireless Network Protocol 802.11b/g

Compatible Media Formats  
.mp3  
.wma  
.rm  
.ogg  
.aac

Preset Stations 10



### Guarantee and support

[www.unisupport.net](http://www.unisupport.net)

### Disposal



*Electrical and electronic equipment (EEE) contains materials, parts and substances, which can be dangerous to the environment and harmful to human health if waste of electrical and electronic equipment (WEEE) is not disposed of correctly.*

*Equipment, which is marked with the WEEE logo (as shown on the left), should not be thrown away with your household waste. Contact your Local Authority Waste Disposal Department, as they will be able to provide details of the recycling options available in your area.*

Warning: Changes or modifications to this unit not expressly approved by the party responsible for compliance could void the user's authority to operate the equipment.

NOTE: This equipment has been tested and found to comply with the limits for a Class B digital device, pursuant to Part 15 of the FCC Rules. These limits are designed to provide reasonable protection against harmful interference in a residential installation. This equipment generates, uses and can radiate radio frequency energy and, if not installed and used in accordance with the instructions, may cause harmful interference to radio communications.

However, there is no guarantee that interference will not occur in a particular installation. If this equipment does cause harmful interference to radio or television reception, which can be determined by turning the equipment off and on, the user is encouraged to try to correct the interference by one or more of the following measures:

- ☐ Reorient or relocate the receiving antenna.
- ☐ Increase the separation between the equipment and receiver.
- ☐ Connect the equipment into an outlet on a circuit different from that to which the receiver is connected.
- ☐ Consult the dealer or an experienced radio/TV technician for help.

This device complies with Part 15 of the FCC Rules. Operation is subject to the following two conditions: (1) This device may not cause harmful interference, and (2) This device must accept any interference received, including interference that may cause undesired operation.

Caution: To maintain the compliance with the FCC's RF exposure guideline, place the internet radio unit at least 20 cm from nearby persons.