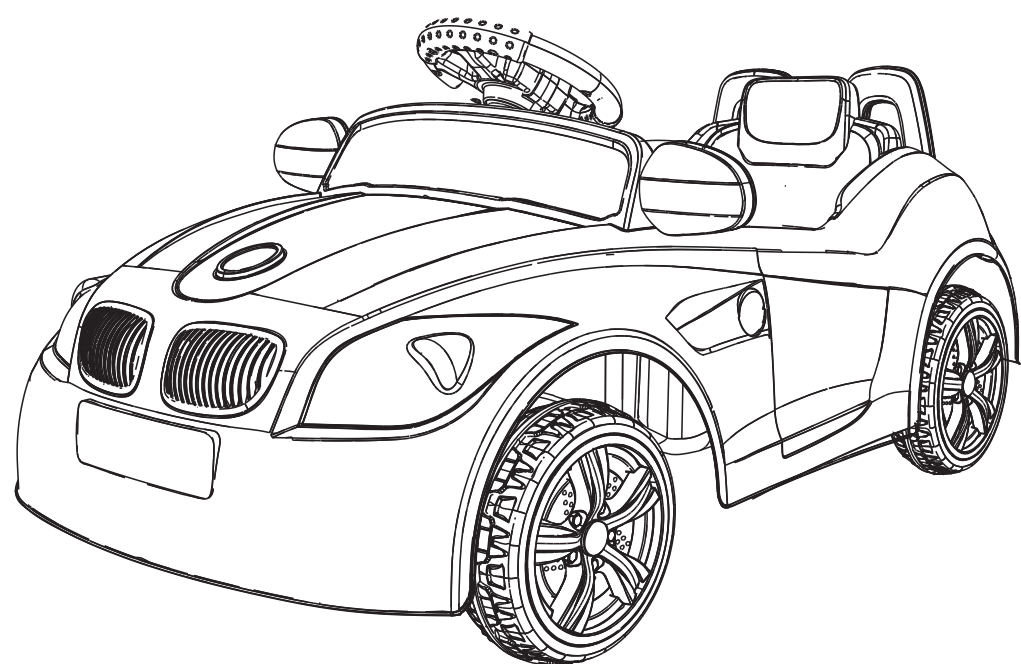


BLACK DEDUT LINE (NOT PRINT)

## FOR AGES 3 AND UP USER MANUAL

**CAUTION - ELECTRICALLY OPERATED TOY**  
Not recommended for children under 3 years of age. As with all electric products, precautions should be observed during handling and use to prevent electric shock.

### Electrically-Operated Ride-On Toy Car



INPUT: 120V AC 60Hz  
OUTPUT: 6V DC 500mA  
DATE OF MANUFACTURE: 05/2012

**WARNING:**  
**CHOKING HAZARD** - Small parts.  
Not for Children Under 3 Years.

#### Table Of Contents

1	Brief introduction and models	01
2	Important Safety Instructions	02
3	How to Operation Your Vehicle	04
4	Charging The Vehicle	05
5	Caring For Your Vehicle	05
6	Problems and Solutions Guide	06
7	Disposal of Battery	07

#### Brief Introduction And Models

Thank you for choosing our vehicle. Each vehicle is realistic and unique. We hope your child enjoys this Ride On Car.

Suitable age:	3+ Years	Load Capacity:	Under 50 LBS
Speed:	300mph	Size of car:	37" X 20" X 18"
Battery:	6V 4AH *1	Fuse:	10A
Power way:	Charging type	Charge time:	8-12 Hours
Charger:	Input: 120V AC 60Hz Output: 6V DC 500mA	verage battery life:	Approximately 300 times

#### Important Safety Instructions

##### Read carefully and follow all the instructions

##### ⚠ WARNING ! CAUTION

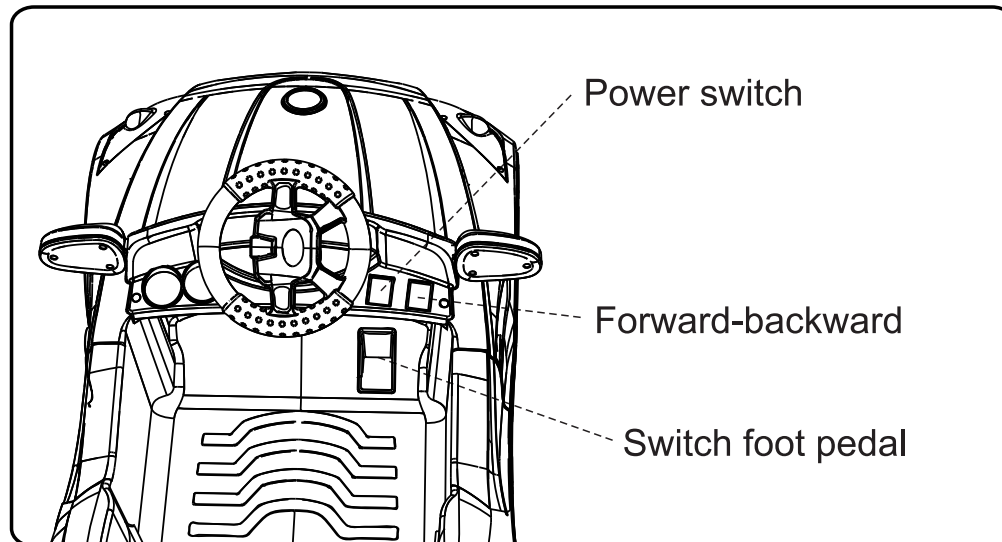
- ⚠ Suitable for age 3+years; Maximum user weight is 50Lbs.
- ⚠ Direct Adult Supervision Required. Never Leave Child unattended. Always keep child in view when child is in vehicle. Teach appropriate safety rules to your child before allowing operation of this vehicle. These rules should also be reviewed with other playmates who want to drive this vehicle. Make sure children know and follow these rules for safe driving and riding:
  - Always wear shoes.
  - Always sit on the seat.
  - Always wear a helmet when riding.
  - Only one rider at a time.
- ⚠ Keep Children within Safe Riding Areas, these areas must be:
  - Away from steps/cars/driveways/roads and alleys.
  - Away from sloped/inclined surfaces/swimming pools or other bodies of water.
  - Away from other dangerous places.
  - ONLY outdoors. Generally flat ground, playground, Garden, asphalt and other hard surfaces;
- ! Never use in the dark. A child could encounter unexpected obstacles and have an accident. Operate the vehicle only in the daytime or a well-lit area. To avoid damaging the motors and gears, stop the vehicle before shifting from forward to backward switch.
- ! Please turn forward/stop/backward switch to "O" when not in use. Turn off power switch.
- ! This vehicle has adjustable play seat belts. Always check to insure safety belt is properly fastened to secure child.
- ! Do not let any child touch the wheels or be near them when the car is moving.

#### Important Safety Instructions

- ! Do not tow anything behind the vehicle or overload it. Do not exceed the maximum weight capacity of 50Lbs
- Battery/Charger / Alkaline Batteries**
  - ⚠ Battery charging must be done by adults only.
  - ⚠ The battery charger and batteries are not toys.
  - ⚠ Do not charge non-rechargeable batteries.
  - ⚠ Insert batteries with correct polarity.
  - ⚠ Remove batteries during long periods of non-use.(FOR CONTROLLER)
  - ⚠ Always remove exhausted batteries from the product.(FOR CONTROLLER)
  - ⚠ Never short-circuit the battery terminals.
  - ⚠ Use only with manufacturers prescribed rechargeable battery and charger (both included).
  - ⚠ Do not use the battery or charger for any other product. Could cause overheating/fire or explosion.
  - ⚠ Do not open the battery and the charger.(FOR CAR)
  - ⚠ Do not charge battery upside down.
  - ⚠ Keep battery dry. Do not allow battery to get wet.
- Charge**
  - ⚠ ONLY adults should handle or charge the battery. Never allow child to handle or charge the battery. Turn off power switch before charging.
  - ! Recharge the battery after each use or when the speed slows. Recharge the battery for 8-12 hours. Never charge the battery longer than 18 hours. Charge the battery after each use regardless of how long the vehicle was used
  - ! Examine the battery, charger and their connectors for excessive wear or damage each time you charge the battery. If damage or excessive wear is detected, do not use the charge or the battery until you have replaced the worn or damaged parts.
  - ! Charge the battery at least once per month, even if the vehicle has not been used.
  - ! It's normal that charger and battery are tepid while charging.
  - ! Charge the battery in a dry area ONLY.
  - ! In room temperature below 41 F, charging the actual to lengthen 3 ~ 5 hours. Below - 23 F please do not use this product.

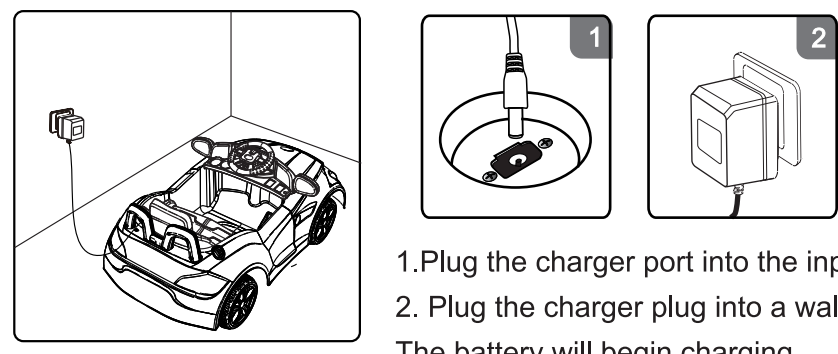
#### How To Operation Your Vehicle

Check all screws, cap nuts and their protective coverings regularly and tighten as required. Check plastic parts on a regular basis for cracks or broken pieces. If damage or excessive wear is detected, do not use the charge or the battery until you have replaced the worn or damaged parts.



- **POWER**  
Press the power switch when heard a sound "drops" after the car into the working status.
- **FORWARD**  
1. Press the "Forward-backward switch "on the "Forward" position.  
2. Press the "Foot pedal", the vehicle drives forward.
- **STOP**  
The vehicle will brake automatically, when your child's foot is lifted from the "Foot pedal".
- **BACKWARD**  
1. Press the "Forward-Backward Switch "on the "Backward" position.  
2. Press the "Foot Pedal", the vehicle will backward.

#### Charging The Vehicle



#### Caring For Your Vehicle

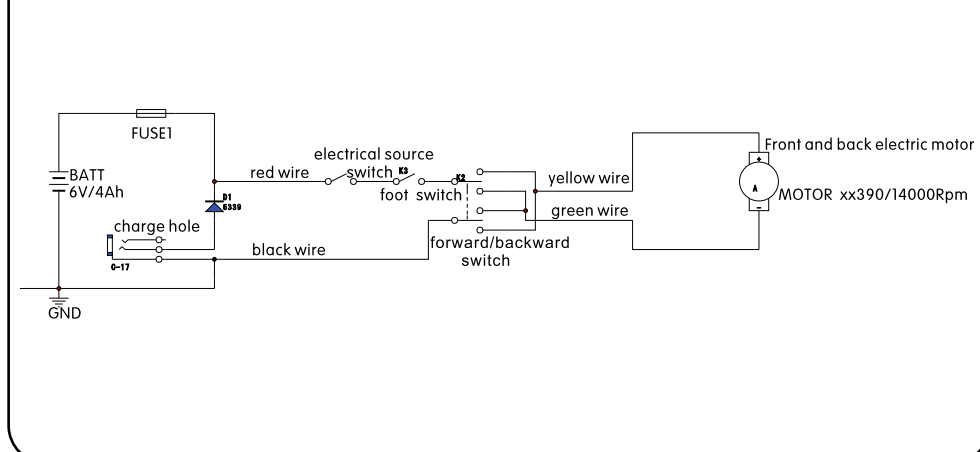
- Do not use in extreme hot or cold conditions. Vehicles should always be far away from hot objects like an oven or heater. Plastic parts may melt.
- Avoid operating the vehicle in wet or snowy conditions. Do no spray the vehicle with water. Do not wash the vehicle with soap and water. Water or moisture in the motors or electrical switches can cause them to corrode and could cause switch or motor failure.
- Avoid operating the vehicle on sand, loose dirt or gravel. Sand, loose dirt or gravel in the motors or electrical switches can cause them to jam, and could cause switch or motor failure.
- The vehicle can be wiped down with a soft, dry cloth for a shiny finish. You can wipe plastic parts with a non-wax furniture polish applied to a soft-cloth.
- Do not use automotive wax, do not use soap and water or spray the vehicle with water.
- Do not modify the electric system. Any repairs must be maintained by professional. Alterations could cause a fire resulting in serious injury and could also ruin the electrical system.
- Approximately every two weeks check the wheels to insure they turn properly and the motor to insure it is working properly. If needed, lubricate moving parts.

#### Problems And Solutions Guide

The vehicle is equipped with a self-resetting fuse. When the vehicle is overloaded or operated incorrectly, the self-resetting fuse will be cut off for 5-20seconds before becoming operational again. The self-resetting fuse is under the seat (Refer to the picture.)

Problem	Check
Vehicle moves slowly	Check if the battery has been recharged long enough for 8-12 hours.
Vehicle does not run	Check if the wires are correctly connected.
Battery won't recharge	Check the fuse. If broken, replace it. Check to see if the charger or the battery has been broken.

#### Circuit elements diagram

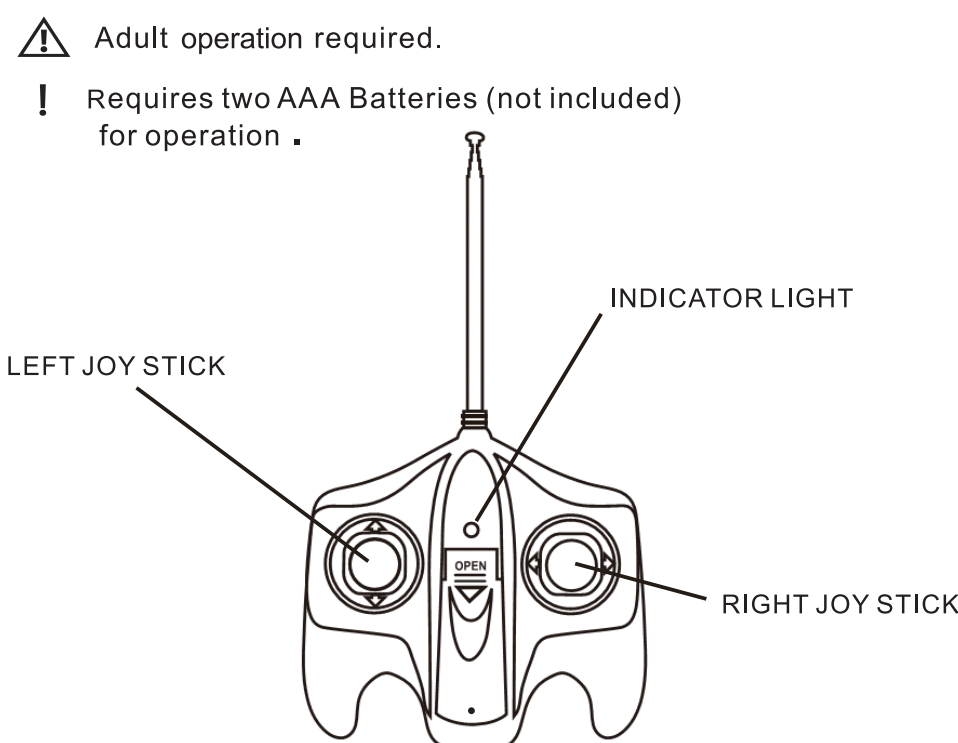


#### Disposal Of Battery



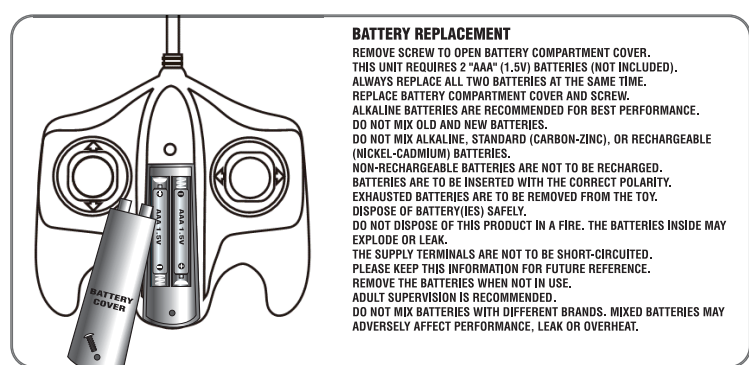
- Your sealed lead-acid battery must be recycled or disposed of in an environmentally sound manner.
- Do not dispose of your lead-acid battery in a fire. The battery may explode or leak.
- Do not dispose of a lead-acid battery in your regular, household trash. The incineration, land filling or mixing of sealed lead-acid batteries with household trash is prohibited by law.
- Return an exhausted battery to your local approved lead-acid battery recycle, such as local retailer of automotive batteries.
- Contact your local waste management officials for other information regarding the environmentally sound recycling and disposal of lead-acid batteries.

#### Remote operation explanation



#### HOW TO USE THE REMOTE CONTROLLER

1. Push the LEFT JOY STICK to the front, the vehicle goes forward, pull the LEFT JOY STICK to the back, the vehicle goes backward.
2. Push the RIGHT JOY STICK to the left, the car turn left, push the RIGHT JOY STICK to the right, the vehicle turns right.



**WARNING:** The adapter be periodically examined for conditions that may result in the risk of fire, electric shock, or injury to persons and that, in an event such conditions, the product should not be used until properly repaired.

**Caution:**  
This device complies with Part 15 of the FCC Rules. Operation is subject to the following two conditions: (1) this device may not cause harmful interference, and (2) this device must accept any interference received, including interference that may cause undesired operation.

Changes or modifications not expressly approved by the party responsible for compliance could void the user's authority to operate the equipment.

This equipment has been tested and found to comply with the limits for a Class B digital device, pursuant to part 15 of the FCC Rules. These limits are designed to provide reasonable protection against harmful interference in a residential installation. This equipment generates uses and can radiate radio frequency energy and, if not installed and used in accordance with the instructions, may cause harmful interference to radio communications. However, there is no guarantee that interference will not occur in a particular installation. If this equipment does cause harmful interference to radio or television reception, which can be determined by turning the equipment off and on, the user is encouraged to try to correct the interference by one or more of the following measures:  
—Reorient or relocate the receiving antenna.  
—Increase the separation between the equipment and receiver.  
—Connect the equipment into an outlet on a circuit different from that to which the receiver is connected.  
—Consult the dealer or an experienced radio/TV technician for help.

EXCITE CHRISTMAS 2012 (B1)
ITEM NO. 9017238
SIZE 14.8CM X 21CM
WARNING: -
COLOR: -
INSERT COLOR: -

PLEASE CHECK ALL DETAILS AND MAKE SURE ALL INFORMATION IS CORRECT BEFORE PRINT

**IMPORTANT NOTE:**  
Excite Ltd. Is responsible for artwork only. The vendor is responsible for packaging content, including product name, warnings or safety notifications, licenses or any other item necessary to cover all legal issues.

**EXCITE**  
1400 Valwood Parkway  
Suite 100  
Carrollton, TX 75006, USA

RA #9017238  
PRINTED IN CHINA