

# Wireless LAN Bridge Radio

## Quick Installation Guide

Model: BR1200

Wireless Manufacturing Company, LLC

This Wireless LAN Bridge Radio is to be professionally installed by a fully trained technician who is thoroughly knowledgeable of both computer LAN and microwave radio installation requirements.

# INFORMATION TO USER

## FCC REQUIREMENTS

This device complies with part 15 of the FCC Rules.

Operation is subject to the following two conditions:

- (1) This device may not cause harmful interference, and
- (2) This device must accept any interference received, including interference that may cause undesired operation.

**NOTE:** This equipment has been tested and found to comply with the limits for a Class A digital device, pursuant to Part 15 of the FCC Rules. These limits are designed to provide reasonable protection against harmful interference when the equipment is operated in a commercial environment. This equipment generates, uses and can radiate radio frequency energy and, if not installed and used in accordance with the instruction manual, may cause harmful interference to radio communications. Operation of this equipment in a residential area is likely to cause harmful interference in which case the user will be required to correct the interference at his own expense.

## Information to User

Caution: Changes or modifications not expressly approved by the party responsible for compliance could void the user's authority to operate the equipment.

## BR1200 Technical Support

If you encounter problems when installing or using this product, or would like more information about our other products, you can contact us with the telephone numbers listed below.

## Useful information

TEL: 603-672-9336

FAX: 603-672-9228

E-Mail: [sales@wirelessmfg.com](mailto:sales@wirelessmfg.com)

World Wide Web: [www.wirelessmfg.com](http://www.wirelessmfg.com)

PO Box 298

Milford, NH 03055-0298

## CONTENTS

Step 1. PCMCIA Adapter Quick Installation.....	-
Step 2. BR1200 Installation Option (separated up to 10 miles).....	-
Step 3. BR1200 Installation Option (separated 10 to 20 miles).....	-

## **Step 1 PCMCIA Adapter Quick Installation**

Unit will be shipped from the factory with the PCMCIA card installed into the BR1200 radio. Skip to Step 2 if PCMCIA card is factory installed. In the event that the card needs to be replaced, the following instructions apply.

No power should be applied to the BR1200 radio.

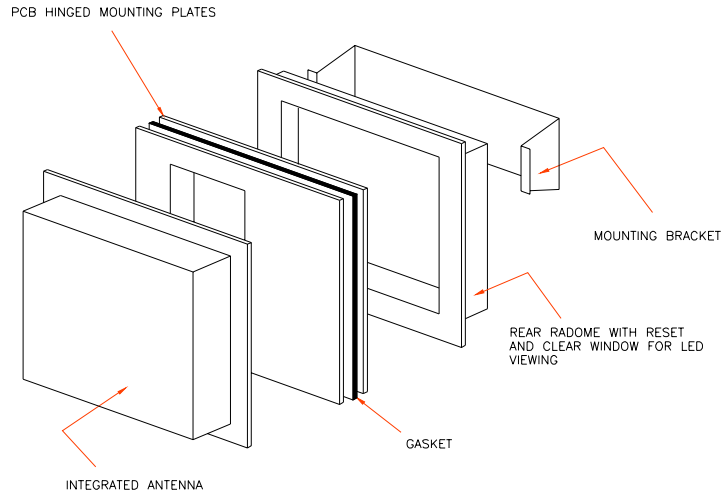
Install the WL201 PCMCIA card in the PCMCIA slot, then power on. The card should recognize the card automatically.

This radio is certified only for use in conjunction with the WL201 PCMCIA card (FCC ID: MXF-WL201) as supplied by Wireless Manufacturing Company, LLC (WMC). Other cards may malfunction or cause unacceptable spurious emissions thus voiding the FCC certification and any warranty from WMC.

## **Step 2** BR1200 Installation (separated up to 10 miles)

Patch Antenna Option : M/A-Com Part Number: ANAD-159W-A-6-SM

The Wireless LAN Bridge Radio (BR1200) is an integrated weatherproof assembly which includes a WL201 PCMCIA transceiver, 486 computer, and power conditioning. The BR1200 can be married to the optional square patch antenna assembly. To do this the cable attached to the rear of the patch antenna assembly is connected to the coaxial connector on the PCMCIA card. The antenna assembly with the supplied weather sealing gasket is placed onto the BR1200 and connected with supplied fasteners.



Typical installation will include two BR1200's, each with an installed antenna assembly, located in a direct line-of-sight up to 10 miles apart. Each finished radio/antenna combination can then be mounted to a suitable mast that has already been installed on an outdoor structure. Structures include buildings, towers, chimneys, etc.

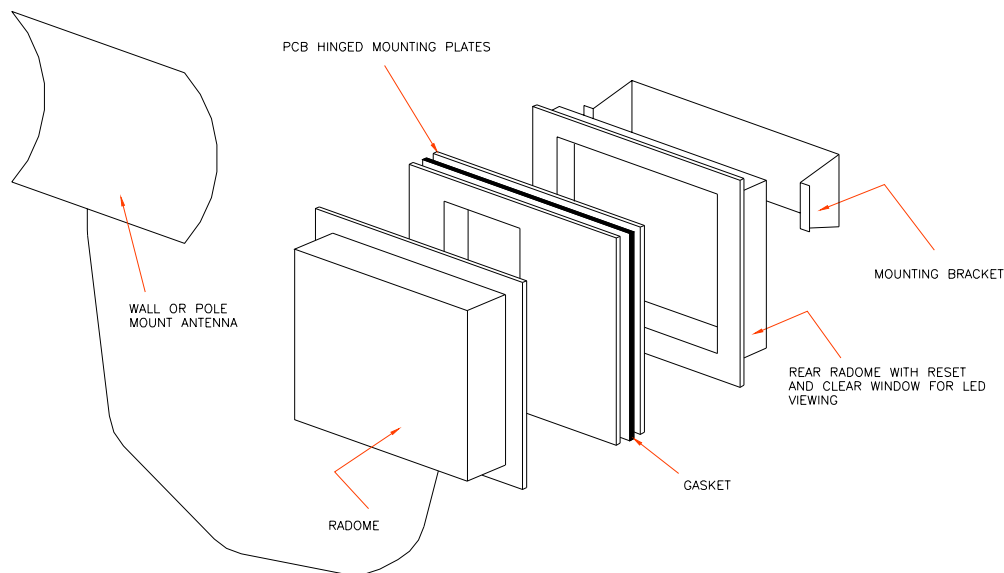
Initial preparation will be to determine the proper location of each BR1200. Wherever possible, installer will visually site each location. Radios will be aimed at each other using the built in adjustments provided with the mounting bracket.

Electrical connections are provided and clearly marked. The connector marked "LAN" will supply standard IEEE 802.3 10BASE-T data (compliant with IEEE 802.11) as well as the radio operating voltage of 24V (AC or DC). Connect a suitable Category 5 cable with the connector provided and dress it appropriately to an interior location where it can connect to a the LAN and prime power. An alternate "Power Only" connection is provided in the event that 24 V is available closer to the BR1200 installation.

### **Step 3**      BR1200 Installation (separated 10-20 miles)

Wire Grid Parabola Option : California Amplifier Part Number: 130093

The Wireless LAN Bridge Radio (BR1200) is an integrated weatherproof assembly which includes a WL201 PCMCIA transceiver, 486 computer, and power conditioning. The BR1200 can be married to the optional wire grid parabola antenna/cover assembly. The 130093 parabola antenna includes the grid parabola with attached coaxial cable and connector. It is connected to the bulkhead connector on the weather cover. A coaxial cable protrudes from the rear of the weather cover and is connected to the coaxial connection on the WL201 PCMCIA card. The wire grid parabola antenna/cover assembly with the supplied weather sealing gasket is placed onto the BR1200 and connected with supplied fasteners.



Typical installation will include two BR1200's, each with the installed antenna assembly, located in a direct line-of-sight from 10 to 20 miles apart. Each finished radio/antenna combination can then be mounted to a suitable mast which has already been installed on an outdoor structure. Structures include buildings, towers, chimneys, etc.

Initial preparation will be to determine the proper location of each BR1200. Wherever possible, installer will visually site each location or consult appropriate reference material for obstructions which would prohibit line-of-site transmissions. In this case the parabolas will be aimed at each other using the built in adjustments provided with the mounting bracket.

## **RF EXPOSURE PRECAUTIONS**

All BR1200 antenna installations must adhere to the FCC requirements for maximum permissible RF exposure.

Regardless of the antenna used with the BR1200, the protection of persons in the vicinity of the BR1200 antenna must be maintained by use of proper installation procedures and by use of warning signs, fencing, or limiting access to the area.

**THE MINIMUM SEPARATION DISTANCE OF 25CM FROM ALL PERSONS MUST BE MAINTAINED.**

This will insure that no person will be in a position of exposure to RF radiation in excess of the Maximum Permissible Exposure Limits for General Population/Uncontrolled Exposure according to 47CFR Chapter 1, Part 1, Section 1.1310.