



Appendix B. Plots of SAR Measurement

P01 WCDMA II_RMC12.2k_Rear Face_0cm_Ch9262**DUT: 650627**

Communication System: WCDMA; Frequency: 1852.4 MHz; Duty Cycle: 1:1

Medium: B1900_160603 Medium parameters used: $f = 1852.4$ MHz; $\sigma = 1.484$ S/m; $\epsilon_r = 54.233$; $\rho = 1000$ kg/m³**Ambient Temperature : 23.5 °C; Liquid Temperature : 22.3 °C**

DASY5 Configuration:

- Probe: EX3DV4 - SN3976; ConvF(8.06, 8.06, 8.06); Calibrated: 2016/2/22;
- Sensor-Surface: 2mm (Mechanical Surface Detection)
- Electronics: DAE4 Sn1424; Calibrated: 2016/2/16
- Phantom: ELI v5.0; Type: QDOVA002AA; Serial: TP:1238
- Measurement SW: DASY52, Version 52.8 (8); SEMCAD X Version 14.6.10 (7331)

Ch9262/Area Scan (101x161x1): Interpolated grid: dx=1.500 mm, dy=1.500 mm

Maximum value of SAR (interpolated) = 0.220 W/kg

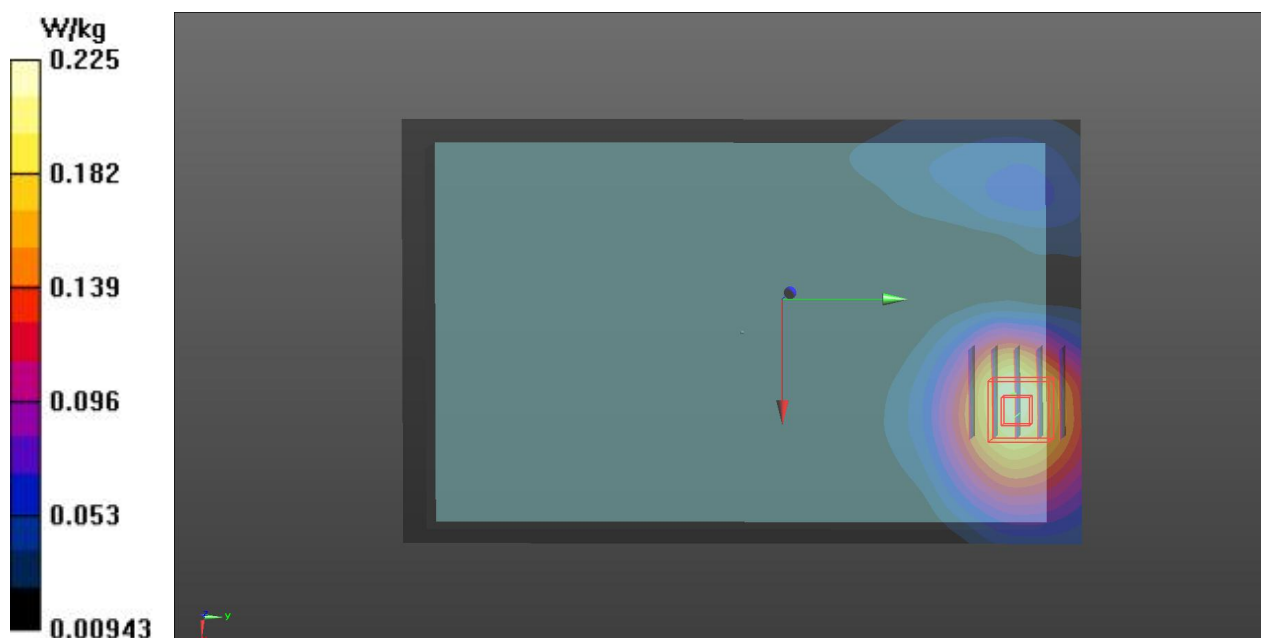
Ch9262/Zoom Scan (5x5x7)/Cube 0: Measurement grid: dx=8mm, dy=8mm, dz=5mm

Reference Value = 12.12 V/m; Power Drift = -0.08 dB

Peak SAR (extrapolated) = 0.268 W/kg

SAR(1 g) = 0.180 W/kg; SAR(10 g) = 0.118 W/kg

Maximum value of SAR (measured) = 0.225 W/kg



P02 WCDMA II_RMC12.2k_Edge1_0cm_Ch9262

DUT: 650627

Communication System: WCDMA; Frequency: 1852.4 MHz; Duty Cycle: 1:1

Medium: B1900_160603 Medium parameters used: $f = 1852.4$ MHz; $\sigma = 1.484$ S/m; $\epsilon_r = 54.233$; $\rho = 1000$ kg/m³

Ambient Temperature : 23.5 °C; Liquid Temperature : 22.3 °C

DASY5 Configuration:

- Probe: EX3DV4 - SN3976; ConvF(8.06, 8.06, 8.06); Calibrated: 2016/2/22;
- Sensor-Surface: 2mm (Mechanical Surface Detection)
- Electronics: DAE4 Sn1424; Calibrated: 2016/2/16
- Phantom: ELI v5.0; Type: QDOVA002AA; Serial: TP:1238
- Measurement SW: DASY52, Version 52.8 (8); SEMCAD X Version 14.6.10 (7331)

Ch9262/Area Scan (71x121x1): Interpolated grid: $dx=1.500$ mm, $dy=1.500$ mm

Maximum value of SAR (interpolated) = 1.30 W/kg

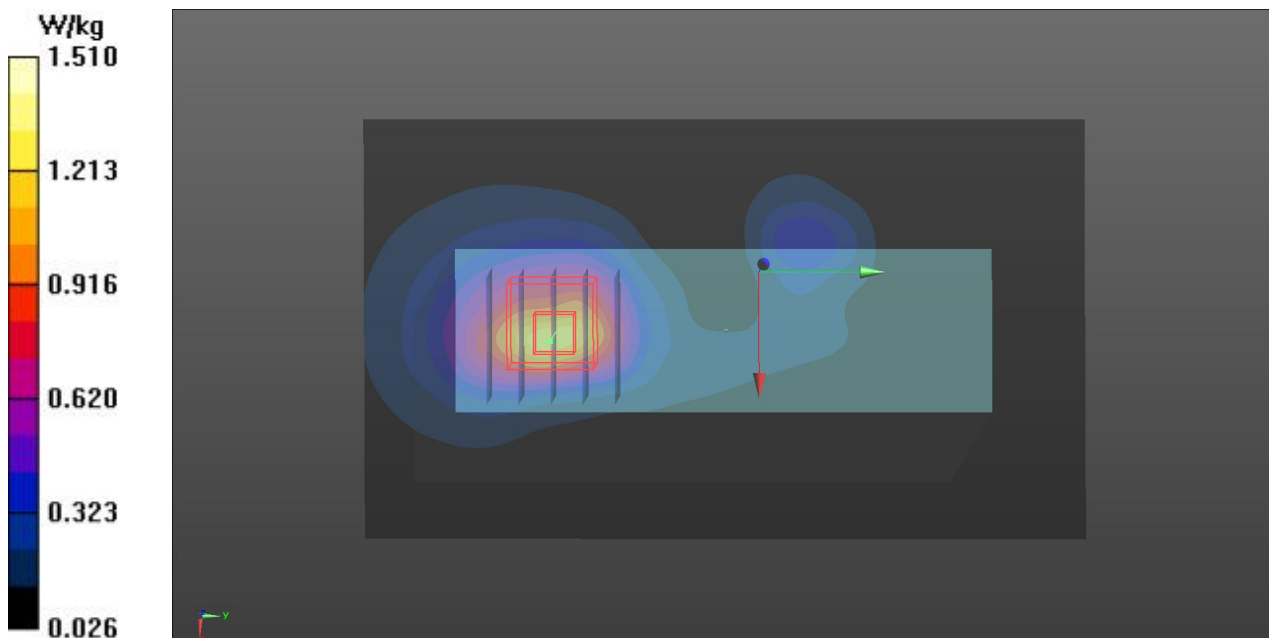
Ch9262/Zoom Scan (5x5x7)/Cube 0: Measurement grid: $dx=8$ mm, $dy=8$ mm, $dz=5$ mm

Reference Value = 27.77 V/m; Power Drift = 0.15 dB

Peak SAR (extrapolated) = 1.87 W/kg

SAR(1 g) = 1.03 W/kg; SAR(10 g) = 0.544 W/kg

Maximum value of SAR (measured) = 1.51 W/kg



P05 WCDMA II_RMC12.2k_Edge4_0cm_Ch9262**DUT: 650627**

Communication System: WCDMA; Frequency: 1852.4 MHz; Duty Cycle: 1:1

Medium: B1900_160603 Medium parameters used: $f = 1852.4$ MHz; $\sigma = 1.484$ S/m; $\epsilon_r = 54.233$; $\rho = 1000$ kg/m³**Ambient Temperature : 23.5 °C; Liquid Temperature : 22.3 °C**

DASY5 Configuration:

- Probe: EX3DV4 - SN3976; ConvF(8.06, 8.06, 8.06); Calibrated: 2016/2/22;
- Sensor-Surface: 2mm (Mechanical Surface Detection)
- Electronics: DAE4 Sn1424; Calibrated: 2016/2/16
- Phantom: ELI v5.0; Type: QDOVA002AA; Serial: TP:1238
- Measurement SW: DASY52, Version 52.8 (8); SEMCAD X Version 14.6.10 (7331)

Ch9262/Area Scan (71x161x1): Interpolated grid: $dx=1.500$ mm, $dy=1.500$ mm

Maximum value of SAR (interpolated) = 1.47 W/kg

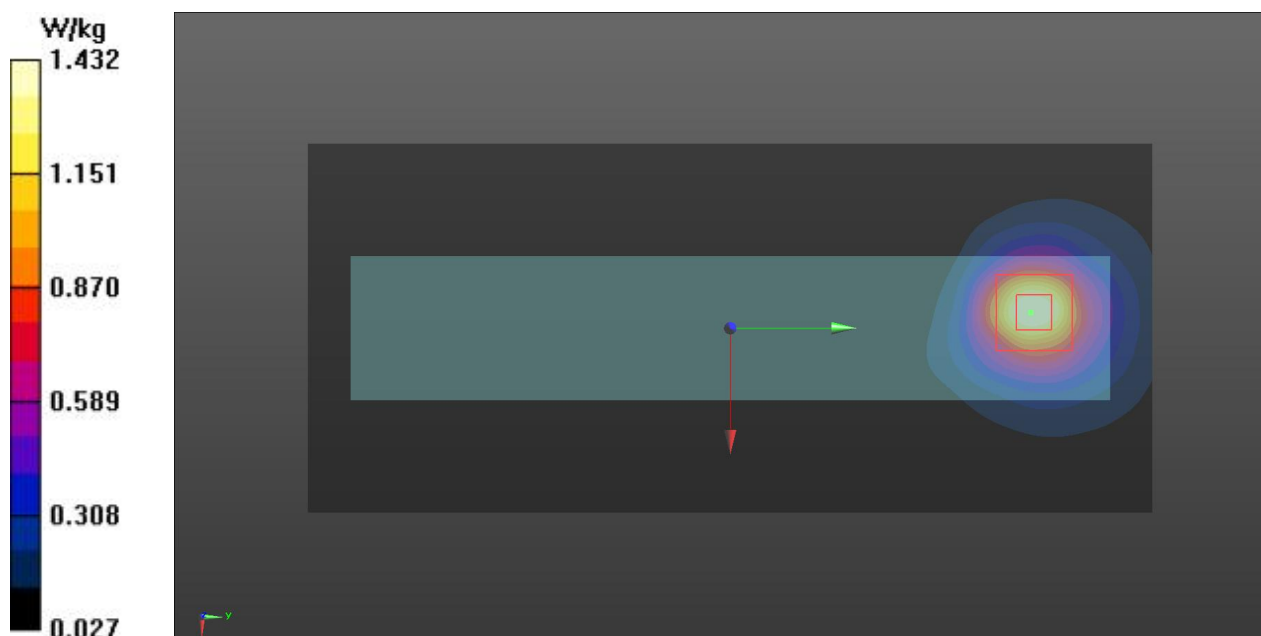
Ch9262/Zoom Scan (5x5x7)/Cube 0: Measurement grid: $dx=8$ mm, $dy=8$ mm, $dz=5$ mm

Reference Value = 30.84 V/m; Power Drift = -0.02 dB

Peak SAR (extrapolated) = 1.79 W/kg

SAR(1 g) = 1.06 W/kg; SAR(10 g) = 0.580 W/kg

Maximum value of SAR (measured) = 1.43 W/kg



P06 WCDMA II_RMC12.2k_Edge4_0cm_Ch9400**DUT: 650627**

Communication System: WCDMA; Frequency: 1880 MHz; Duty Cycle: 1:1
Medium: B1900_160603 Medium parameters used: $f = 1880$ MHz; $\sigma = 1.512$ S/m; $\epsilon_r = 54.152$; $\rho = 1000$ kg/m³

Ambient Temperature : 23.5 °C; Liquid Temperature : 22.3 °C

DASY5 Configuration:

- Probe: EX3DV4 - SN3976; ConvF(8.06, 8.06, 8.06); Calibrated: 2016/2/22;
- Sensor-Surface: 2mm (Mechanical Surface Detection)
- Electronics: DAE4 Sn1424; Calibrated: 2016/2/16
- Phantom: ELI v5.0; Type: QDOVA002AA; Serial: TP:1238
- Measurement SW: DASY52, Version 52.8 (8); SEMCAD X Version 14.6.10 (7331)

Ch9400/Area Scan (71x161x1): Interpolated grid: $dx=1.500$ mm, $dy=1.500$ mm

Maximum value of SAR (interpolated) = 1.41 W/kg

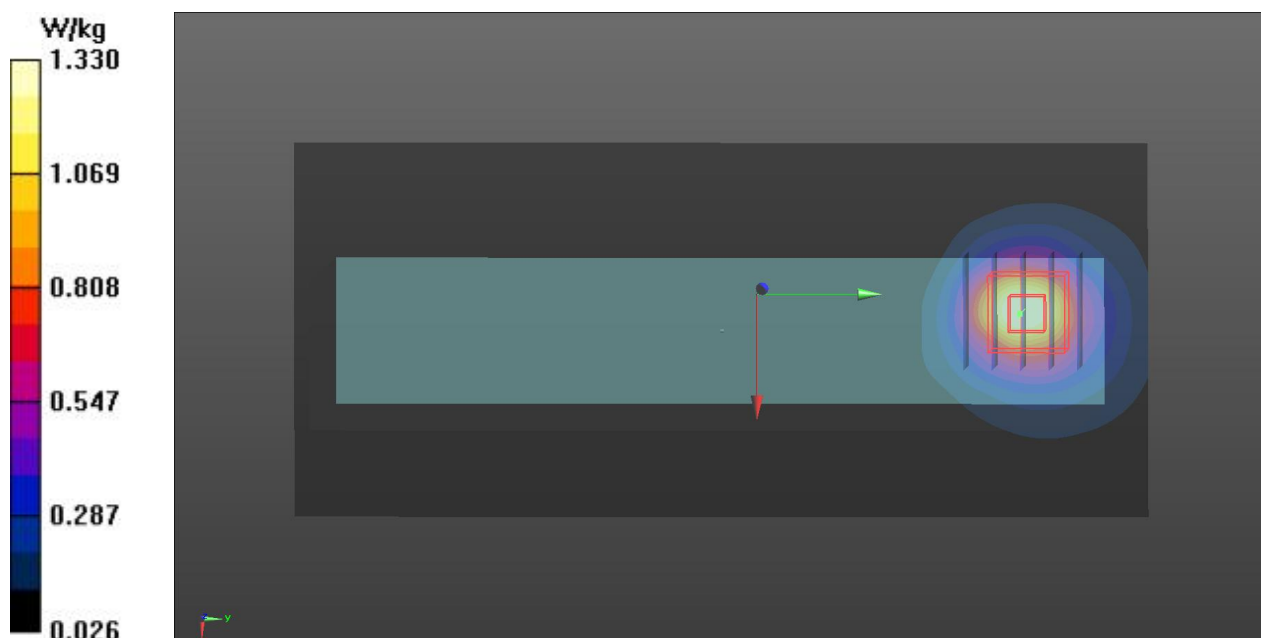
Ch9400/Zoom Scan (5x5x7)/Cube 0: Measurement grid: $dx=8$ mm, $dy=8$ mm, $dz=5$ mm

Reference Value = 29.47 V/m; Power Drift = -0.07 dB

Peak SAR (extrapolated) = 1.65 W/kg

SAR(1 g) = 0.988 W/kg; SAR(10 g) = 0.543 W/kg

Maximum value of SAR (measured) = 1.33 W/kg



P07 WCDMA II_RMC12.2k_Edge4_0cm_Ch9538**DUT: 650627**

Communication System: WCDMA; Frequency: 1907.6 MHz; Duty Cycle: 1:1

Medium: B1900_160603 Medium parameters used: $f = 1908$ MHz; $\sigma = 1.541$ S/m; $\epsilon_r = 54.074$; $\rho = 1000$ kg/m³**Ambient Temperature : 23.5 °C; Liquid Temperature : 22.3 °C**

DASY5 Configuration:

- Probe: EX3DV4 - SN3976; ConvF(8.06, 8.06, 8.06); Calibrated: 2016/2/22;
- Sensor-Surface: 2mm (Mechanical Surface Detection)
- Electronics: DAE4 Sn1424; Calibrated: 2016/2/16
- Phantom: ELI v5.0; Type: QDOVA002AA; Serial: TP:1238
- Measurement SW: DASY52, Version 52.8 (8); SEMCAD X Version 14.6.10 (7331)

Ch9538/Area Scan (71x161x1): Interpolated grid: $dx=1.500$ mm, $dy=1.500$ mm

Maximum value of SAR (interpolated) = 1.47 W/kg

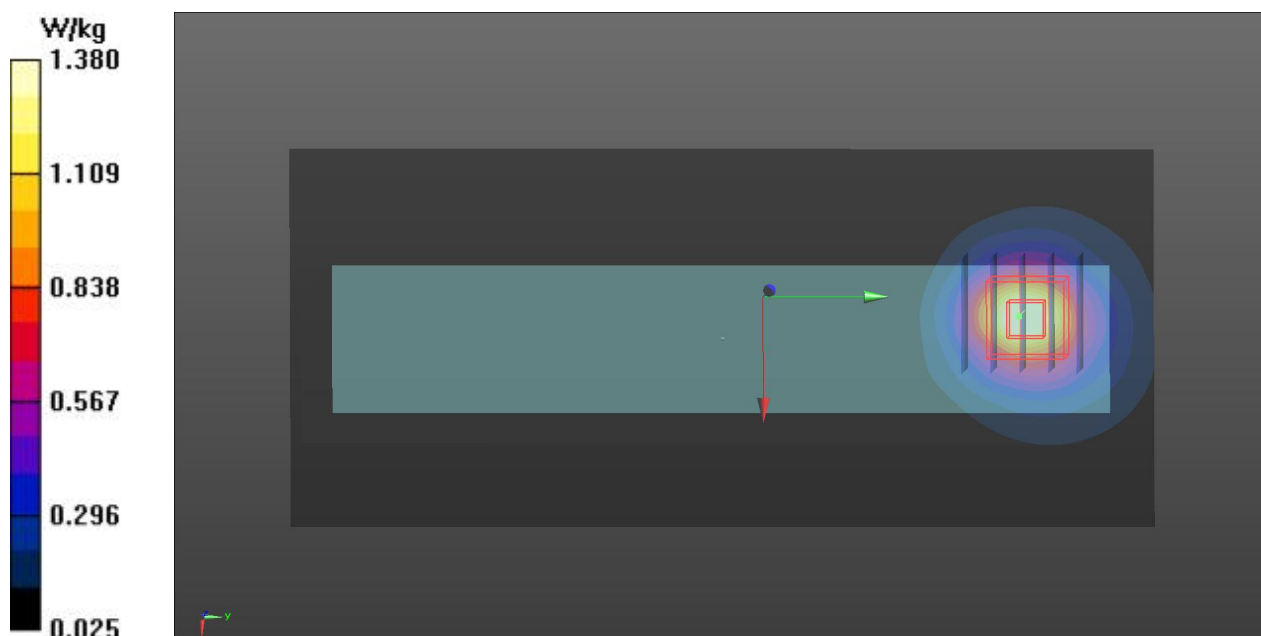
Ch9538/Zoom Scan (5x5x7)/Cube 0: Measurement grid: $dx=8$ mm, $dy=8$ mm, $dz=5$ mm

Reference Value = 29.43 V/m; Power Drift = -0.02 dB

Peak SAR (extrapolated) = 1.74 W/kg

SAR(1 g) = 1.03 W/kg; SAR(10 g) = 0.562 W/kg

Maximum value of SAR (measured) = 1.38 W/kg



P08 WCDMA II_RMC12.2k_Edge4_0cm_Ch9262_Repeated**DUT: 650627**

Communication System: WCDMA; Frequency: 1852.4 MHz; Duty Cycle: 1:1

Medium: B1900_160603 Medium parameters used: $f = 1852.4$ MHz; $\sigma = 1.484$ S/m; $\epsilon_r = 54.233$; $\rho = 1000$ kg/m³**Ambient Temperature : 23.5 °C; Liquid Temperature : 22.3 °C**

DASY5 Configuration:

- Probe: EX3DV4 - SN3976; ConvF(8.06, 8.06, 8.06); Calibrated: 2016/2/22;
- Sensor-Surface: 2mm (Mechanical Surface Detection)
- Electronics: DAE4 Sn1424; Calibrated: 2016/2/16
- Phantom: ELI v5.0; Type: QDOVA002AA; Serial: TP:1238
- Measurement SW: DASY52, Version 52.8 (8); SEMCAD X Version 14.6.10 (7331)

Ch9262/Area Scan (71x161x1): Interpolated grid: $dx=1.500$ mm, $dy=1.500$ mm

Maximum value of SAR (interpolated) = 1.47 W/kg

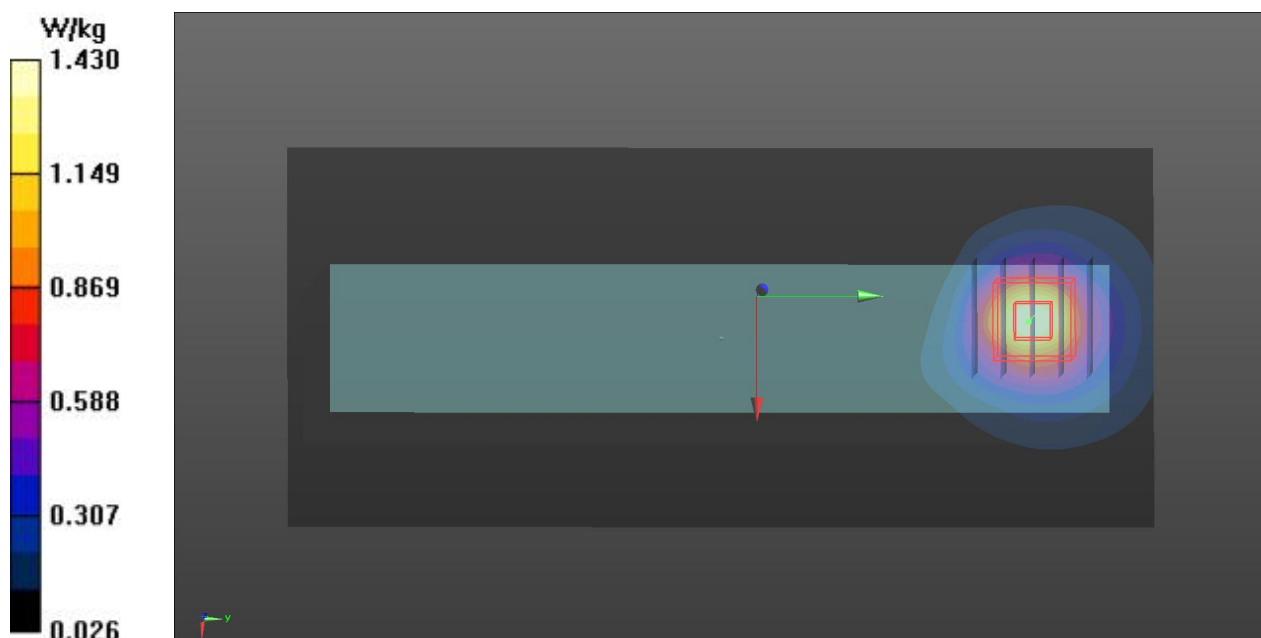
Ch9262/Zoom Scan (5x5x7)/Cube 0: Measurement grid: $dx=8$ mm, $dy=8$ mm, $dz=5$ mm

Reference Value = 30.63 V/m; Power Drift = 0.04 dB

Peak SAR (extrapolated) = 1.79 W/kg

SAR(1 g) = 1.05 W/kg; SAR(10 g) = 0.572 W/kg

Maximum value of SAR (measured) = 1.43 W/kg



P09 WCDMA V_RMC12.2k_Rear Face_0cm_Ch4233

DUT: 650627

Communication System: WCDMA; Frequency: 846.6 MHz; Duty Cycle: 1:1
Medium: B835_160607 Medium parameters used: $f = 847$ MHz; $\sigma = 1.008$ S/m; $\epsilon_r = 56.442$; $\rho = 1000$ kg/m³

Ambient Temperature : 23.4 °C; Liquid Temperature : 22.5 °C

DASY5 Configuration:

- Probe: EX3DV4 - SN3976; ConvF(9.93, 9.93, 9.93); Calibrated: 2016/2/22;
- Sensor-Surface: 2mm (Mechanical Surface Detection)
- Electronics: DAE4 Sn1424; Calibrated: 2016/2/16
- Phantom: ELI v5.0; Type: QDOVA002AA; Serial: TP:1238
- Measurement SW: DASY52, Version 52.8 (8); SEMCAD X Version 14.6.10 (7331)

Ch4233/Area Scan (101x161x1): Interpolated grid: dx=1.500 mm, dy=1.500 mm
Maximum value of SAR (interpolated) = 0.0661 W/kg

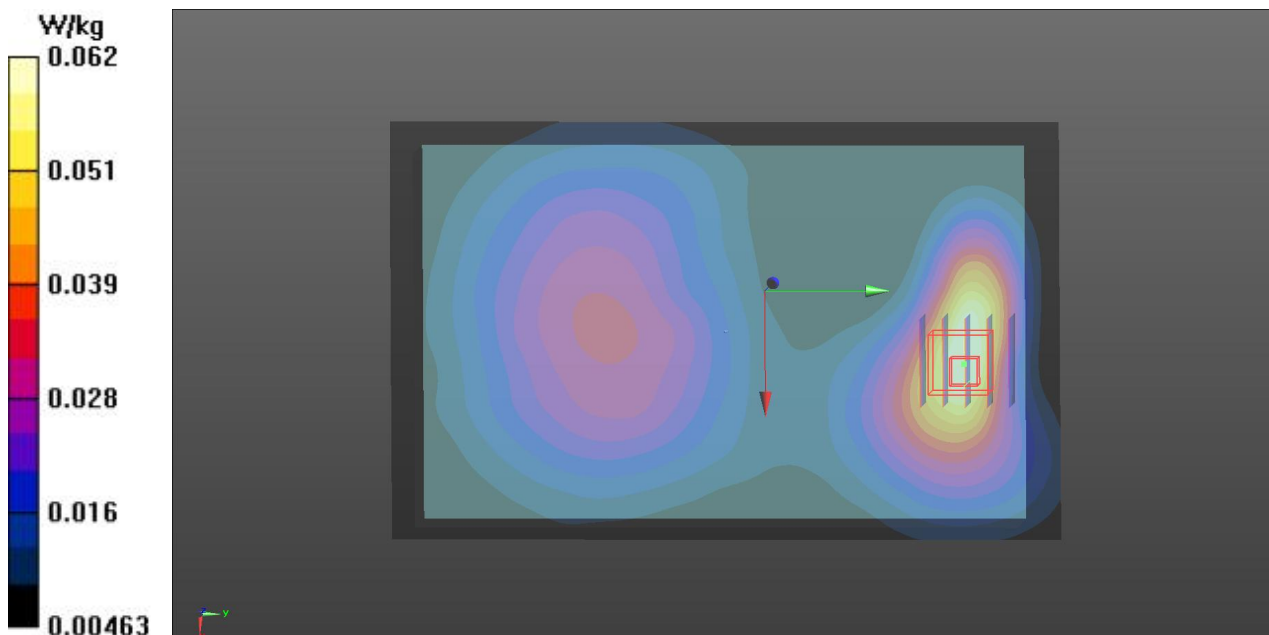
Ch4233/Zoom Scan (5x5x7)/Cube 0: Measurement grid: dx=8mm, dy=8mm, dz=5mm

Reference Value = 7.967 V/m; Power Drift = -0.06 dB

Peak SAR (extrapolated) = 0.0780 W/kg

SAR(1 g) = 0.051 W/kg; SAR(10 g) = 0.035 W/kg

Maximum value of SAR (measured) = 0.0621 W/kg



P10 WCDMA V_RMC12.2k_Edge1_0cm_Ch4233**DUT: 650627**

Communication System: WCDMA; Frequency: 846.6 MHz; Duty Cycle: 1:1
Medium: B835_160607 Medium parameters used: $f = 847$ MHz; $\sigma = 1.008$ S/m; $\epsilon_r = 56.442$; $\rho = 1000$ kg/m³

Ambient Temperature : 23.4 °C; Liquid Temperature : 22.5 °C

DASY5 Configuration:

- Probe: EX3DV4 - SN3976; ConvF(9.93, 9.93, 9.93); Calibrated: 2016/2/22;
- Sensor-Surface: 2mm (Mechanical Surface Detection)
- Electronics: DAE4 Sn1424; Calibrated: 2016/2/16
- Phantom: ELI v5.0; Type: QDOVA002AA; Serial: TP:1238
- Measurement SW: DASY52, Version 52.8 (8); SEMCAD X Version 14.6.10 (7331)

Ch4233/Area Scan (61x121x1): Interpolated grid: $dx=1.500$ mm, $dy=1.500$ mm

Maximum value of SAR (interpolated) = 0.458 W/kg

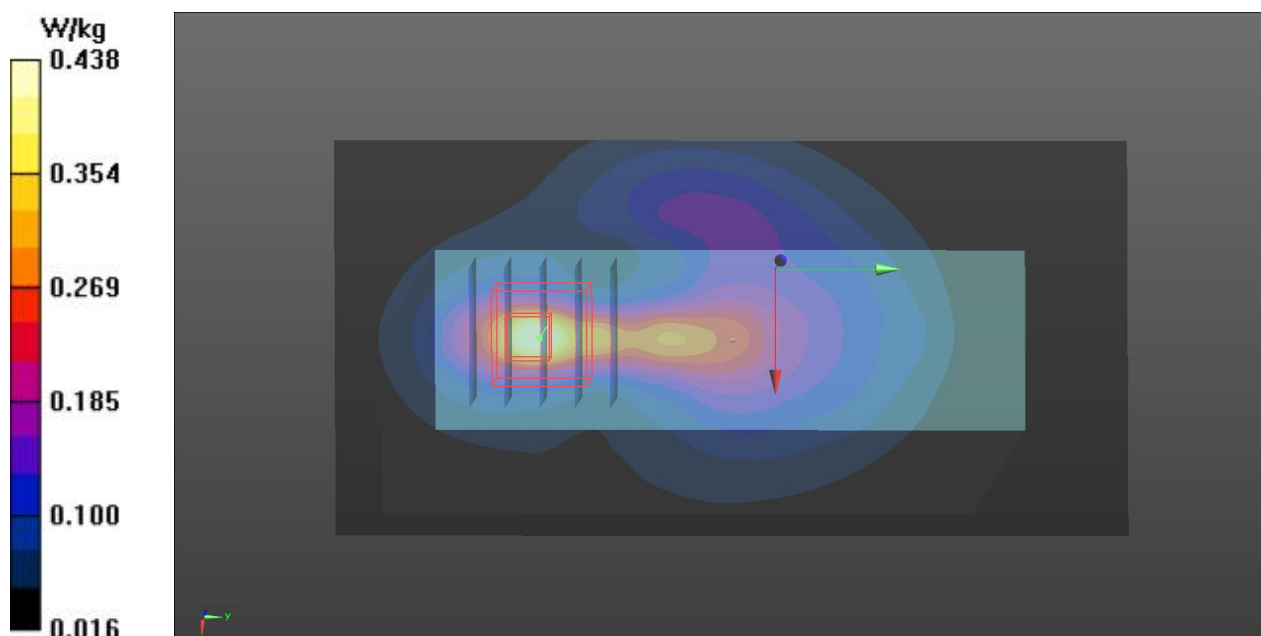
Ch4233/Zoom Scan (5x5x7)/Cube 0: Measurement grid: $dx=8$ mm, $dy=8$ mm, $dz=5$ mm

Reference Value = 21.57 V/m; Power Drift = 0.05 dB

Peak SAR (extrapolated) = 0.612 W/kg

SAR(1 g) = 0.273 W/kg; SAR(10 g) = 0.137 W/kg

Maximum value of SAR (measured) = 0.438 W/kg



P13 WCDMA V_RMC12.2k_Edge4_0cm_Ch4233**DUT: 650627**

Communication System: WCDMA; Frequency: 846.6 MHz; Duty Cycle: 1:1
Medium: B835_160607 Medium parameters used: $f = 847$ MHz; $\sigma = 1.008$ S/m; $\epsilon_r = 56.442$; $\rho = 1000$ kg/m³

Ambient Temperature : 23.4 °C; Liquid Temperature : 22.5 °C

DASY5 Configuration:

- Probe: EX3DV4 - SN3976; ConvF(9.93, 9.93, 9.93); Calibrated: 2016/2/22;
- Sensor-Surface: 2mm (Mechanical Surface Detection)
- Electronics: DAE4 Sn1424; Calibrated: 2016/2/16
- Phantom: ELI v5.0; Type: QDOVA002AA; Serial: TP:1238
- Measurement SW: DASY52, Version 52.8 (8); SEMCAD X Version 14.6.10 (7331)

Ch4233/Area Scan (61x161x1): Interpolated grid: $dx=1.500$ mm, $dy=1.500$ mm

Maximum value of SAR (interpolated) = 0.123 W/kg

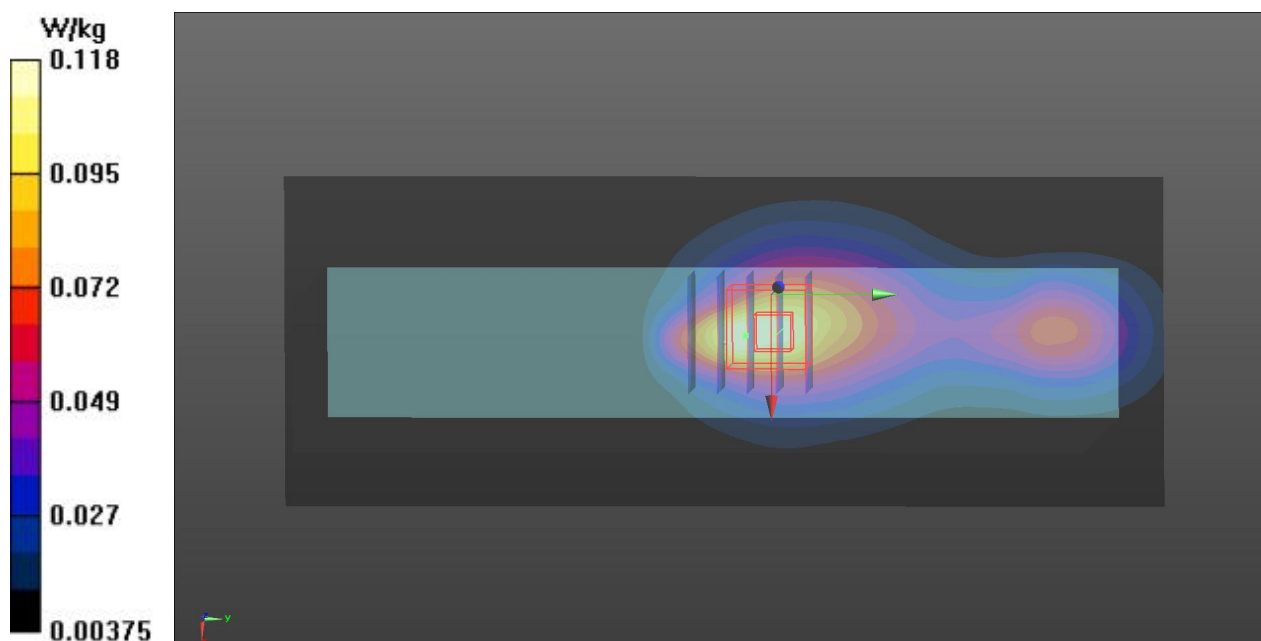
Ch4233/Zoom Scan (5x5x7)/Cube 0: Measurement grid: $dx=8$ mm, $dy=8$ mm, $dz=5$ mm

Reference Value = 10.82 V/m; Power Drift = -0.06 dB

Peak SAR (extrapolated) = 0.143 W/kg

SAR(1 g) = 0.089 W/kg; SAR(10 g) = 0.054 W/kg

Maximum value of SAR (measured) = 0.118 W/kg



P14 802.11b_Rear Face_0cm_Ch11

DUT: 650627

Communication System: WLAN_2.4G; Frequency: 2462 MHz; Duty Cycle: 1:1
Medium: B2450_160607 Medium parameters used: $f = 2462$ MHz; $\sigma = 1.948$ S/m; $\epsilon_r = 52.809$; $\rho = 1000$ kg/m³

Ambient Temperature : 23.5 °C; Liquid Temperature : 22.5 °C

DASY5 Configuration:

- Probe: EX3DV4 - SN3976; ConvF(7.45, 7.45, 7.45); Calibrated: 2016/2/22;
- Sensor-Surface: 2mm (Mechanical Surface Detection)
- Electronics: DAE4 Sn1424; Calibrated: 2016/2/16
- Phantom: ELI v5.0; Type: QDOVA002AA; Serial: TP:1238
- Measurement SW: DASY52, Version 52.8 (8); SEMCAD X Version 14.6.10 (7331)

Ch11/Area Scan (131x201x1): Interpolated grid: dx=1.200 mm, dy=1.200 mm
Maximum value of SAR (interpolated) = 0.0280 W/kg

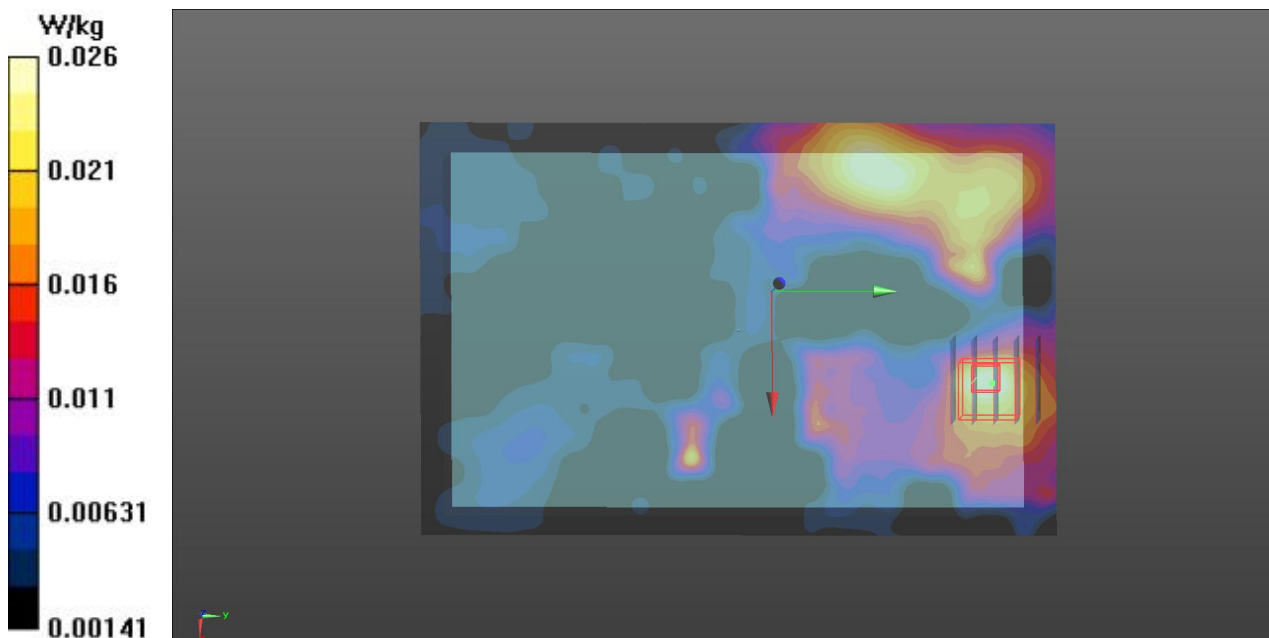
Ch11/Zoom Scan (5x5x7)/Cube 0: Measurement grid: dx=8mm, dy=8mm, dz=5mm

Reference Value = 3.845 V/m; Power Drift = 0.15 dB

Peak SAR (extrapolated) = 0.0360 W/kg

SAR(1 g) = 0.020 W/kg; SAR(10 g) = 0.011 W/kg

Maximum value of SAR (measured) = 0.0259 W/kg



P15 802.11b_Edge1_0cm_Ch11

DUT: 650627

Communication System: WLAN_2.4G; Frequency: 2462 MHz; Duty Cycle: 1:1
Medium: B2450_160607 Medium parameters used: $f = 2462$ MHz; $\sigma = 1.948$ S/m; $\epsilon_r = 52.809$; $\rho = 1000$ kg/m³

Ambient Temperature : 23.5 °C; Liquid Temperature : 22.5 °C

DASY5 Configuration:

- Probe: EX3DV4 - SN3976; ConvF(7.45, 7.45, 7.45); Calibrated: 2016/2/22;
- Sensor-Surface: 2mm (Mechanical Surface Detection)
- Electronics: DAE4 Sn1424; Calibrated: 2016/2/16
- Phantom: ELI v5.0; Type: QDOVA002AA; Serial: TP:1238
- Measurement SW: DASY52, Version 52.8 (8); SEMCAD X Version 14.6.10 (7331)

Ch11/Area Scan (71x151x1): Interpolated grid: dx=1.200 mm, dy=1.200 mm

Maximum value of SAR (interpolated) = 1.01 W/kg

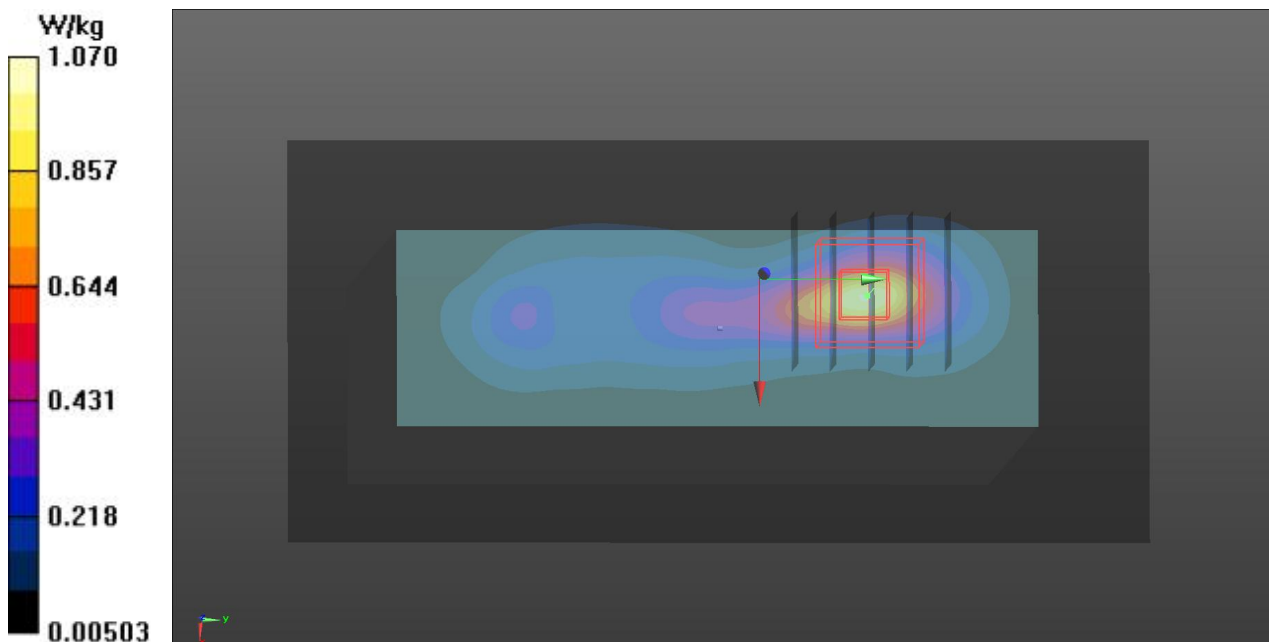
Ch11/Zoom Scan (5x5x7)/Cube 0: Measurement grid: dx=8mm, dy=8mm, dz=5mm

Reference Value = 21.67 V/m; Power Drift = 0.06 dB

Peak SAR (extrapolated) = 1.45 W/kg

SAR(1 g) = 0.633 W/kg; SAR(10 g) = 0.271 W/kg

Maximum value of SAR (measured) = 1.07 W/kg



P18 802.11b_Edge4_0cm_Ch11

DUT: 650627

Communication System: WLAN_2.4G; Frequency: 2462 MHz; Duty Cycle: 1:1
Medium: B2450_160607 Medium parameters used: $f = 2462$ MHz; $\sigma = 1.948$ S/m; $\epsilon_r = 52.809$; $\rho = 1000$ kg/m³

Ambient Temperature : 23.5 °C; Liquid Temperature : 22.5 °C

DASY5 Configuration:

- Probe: EX3DV4 - SN3976; ConvF(7.45, 7.45, 7.45); Calibrated: 2016/2/22;
- Sensor-Surface: 2mm (Mechanical Surface Detection)
- Electronics: DAE4 Sn1424; Calibrated: 2016/2/16
- Phantom: ELI v5.0; Type: QDOVA002AA; Serial: TP:1238
- Measurement SW: DASY52, Version 52.8 (8); SEMCAD X Version 14.6.10 (7331)

Ch11/Area Scan (101x201x1): Interpolated grid: dx=1.200 mm, dy=1.200 mm

Maximum value of SAR (interpolated) = 0.0435 W/kg

Ch11/Zoom Scan (5x5x7)/Cube 0: Measurement grid: dx=8mm, dy=8mm, dz=5mm

Reference Value = 4.669 V/m; Power Drift = 0.07 dB

Peak SAR (extrapolated) = 0.0800 W/kg

SAR(1 g) = 0.041 W/kg; SAR(10 g) = 0.022 W/kg

Maximum value of SAR (measured) = 0.0573 W/kg

