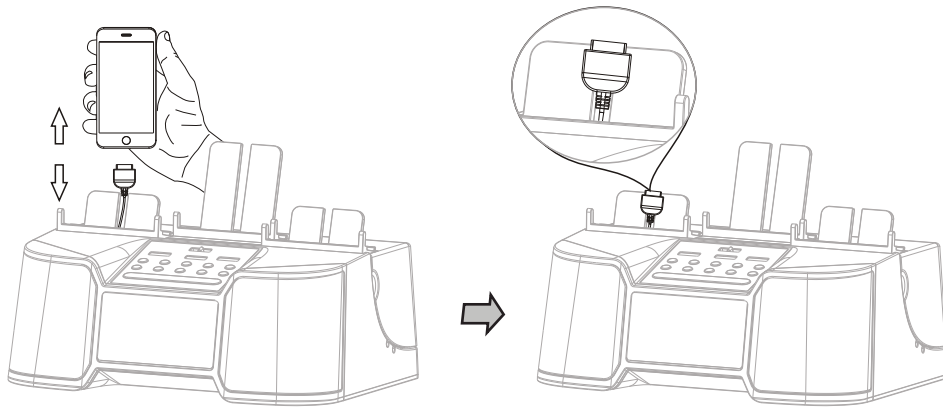


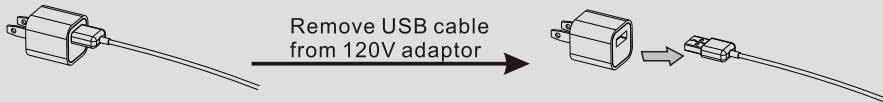
## Quick Start On Charging Your Device

---

6. Disconnect and leave the USB cord for easy re-connection



If necessary, disconnect your USB cable from your existing smart phone power adaptor, then use the charging cable that comes with your phone.



*NOTE: Old model phones may not come with a USB charging cable. Contact your phone's service provider or review the cables available in this catalog.*

## What's in the Gift box?

---



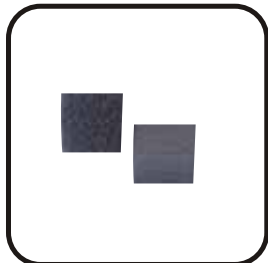
CR68 Base Unit



3 Device Cradles &  
3 Cradle Inserts



Remote Control



Velcro Pad



Speaker (AUX IN) Cable



USB Phone Charging Cables



User's Manual



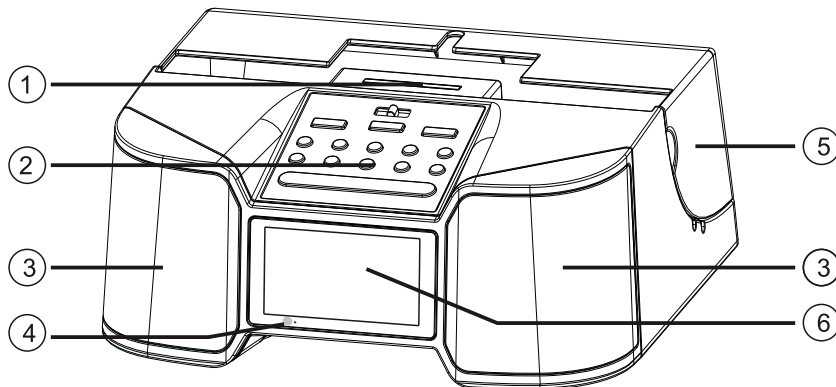
Quick Guide

## Location of Functions

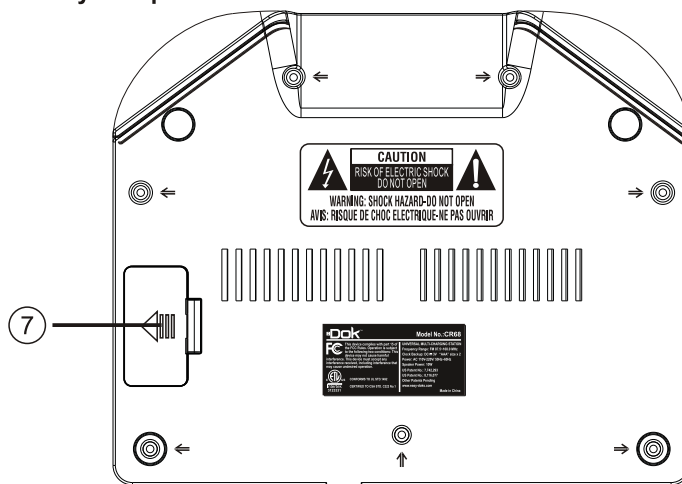
**1. LED night light**  
**4. Remote sensor**

**2. Function key panel**  
**5. Back Cover**

**3. Speakers**  
**6. LCD display**

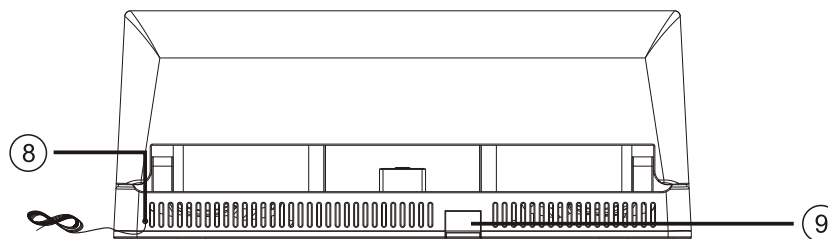


**7. Battery compartment**



**8. FM antenna**

**9. Power cord**



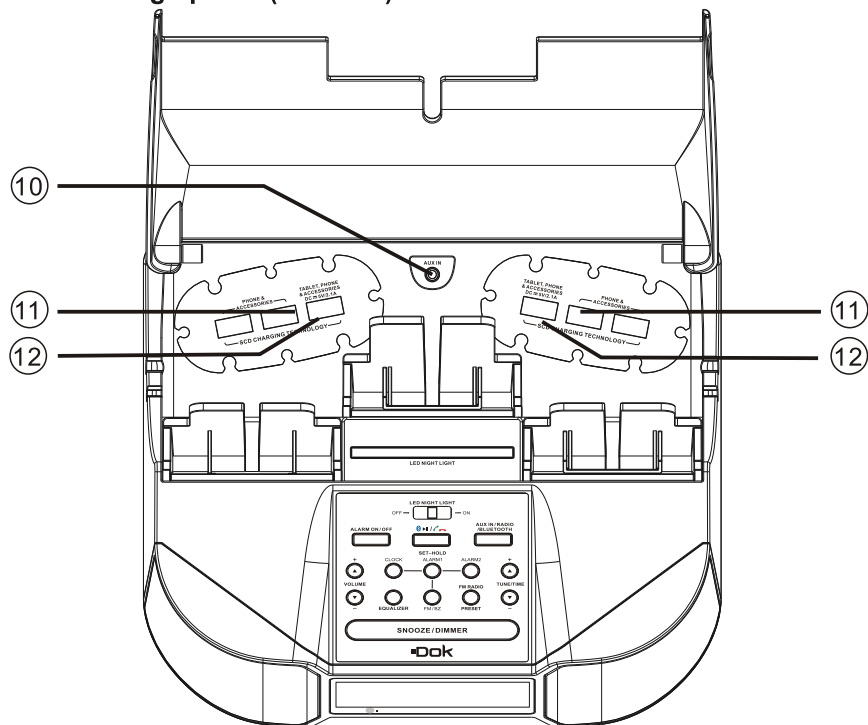
## Location of Functions

---

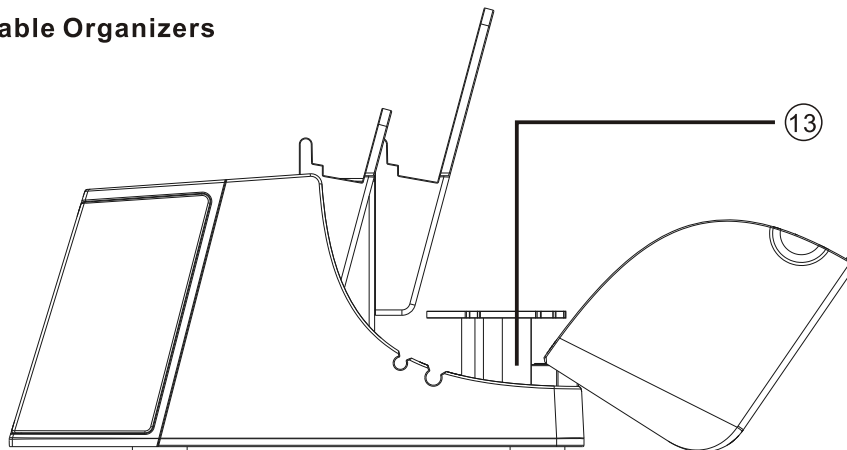
10. AUX IN jack

11. USB charge ports (5V/1A)

12. USB charge ports (5V/2.1A)

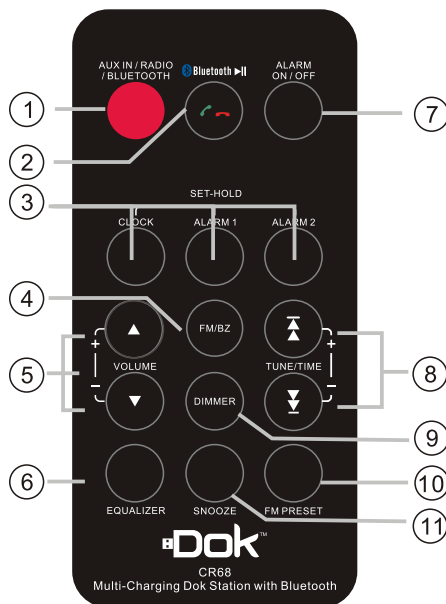
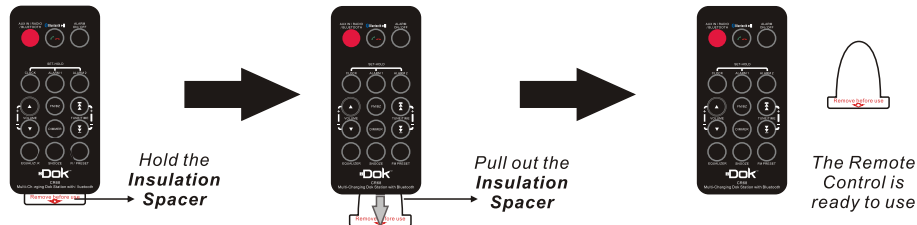


12. Cable Organizers

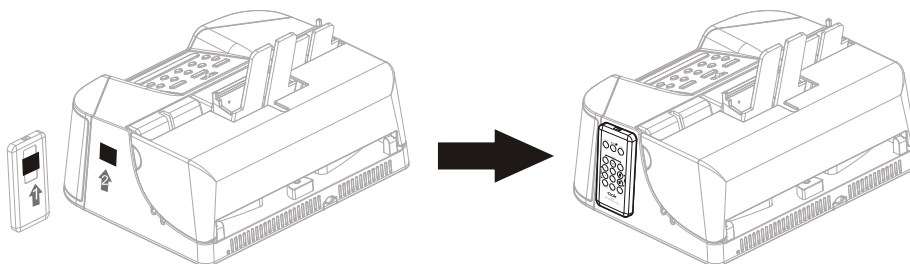


## Remote Control

Please pull out the **Insulation Spacer** to use the remote control.



- 1. AUX IN/RADIO/BLUETOOTH:** Playing media selection/FM radio or listen to wireless music;
- 2. PLAY/PAUSE /PHONE ANSWERS**
- 3. CLOCK AND ALARMS SETTING:** See page 15 for more detail;
- 4. ALARM TONE:** Buzzer or Radio alarm tone selection. See page 15 ALARM SETTING;
- 5. VOLUME:** System volume adjustment;
- 6. EQUALIZER:** This Key selects different sound effects of the system;
- 7. ALARM ON/OFF:** Press and release to activate the alarm or deactivate the alarm;
- 8. TUNE/TIME:** For FM frequency adjustment and time setting. See page 18 for more detail;
- 9. DIMMER:** Display brightness adjustment;
- 10. FM PRESET:** Press and release to preset station selection (cycle selection).
- 11. SNOOZE:** For extra sleep time.



A Velcro pad set (provided) can be affixed to the back of remote control unit and the side of the plastic body. This is to help you to keep them in place and avoid losing.

# Operations

---

## **SETTING UP THE UNIT**

1. Install 2 AAA batteries (for backup only).
2. Plug the AC adaptor cable into a standard 120V AC wall socket. Adaptor is required to operate unit. Batteries are for backup only.
3. Time setting:
  - a. Press and hold **CLOCK** button, until the Time/ (Hour) display begins flashing;
  - b. Press and release **TUNE/TIME +** or **-** to adjust Hours;
  - c. Press and release **CLOCK** button switch to Minute adjust mode (while flashing);
  - d. Do the same as hour adjusting (hold for faster setting);
  - e. Press and release **CLOCK** to finish setting.

## **USING THE UNIT**

### **► Using the Alarms**

This unit has a dual alarm system so you can set two separate alarms to different alarm times.

#### **• Setting the Alarms**

Note: Alarm1 and Alarm2 are set the same way.

1. Press and hold the **ALARM (1 or 2)** button until the alarm time display flashes;
2. Adjust the alarm time like clock setting;
3. Press and release **TUNE/TIME +** or **-** to adjust alarm volume.
4. Select FM (radio) or BZ (buzzer) by **FM/BZ** as an alarm tone;
5. Press and release the related alarm button to finish setting;  
(Alarm icon shows on the display).

#### **• Reviewing, Arming and Disarming Alarm (Turn Alarm function On and Off)**

1. Alarms are automatically armed when set. Active alarms are indicated by alarm types on the display;
2. To review the alarm time, press and release the **ALARM** button once. The related wake to source and alarm time will show on the display;
3. Press and release the **ALARM ON/OFF** button once to toggle it on or off. If the alarm is armed, the alarm type will light up.

#### **To Turn One of the Alarms Off**

1. Press and hold the related alarm button until it flashes on the display;
2. Skip the hour and minute adjust and go to the alarm tone type setting;
3. Press and release the **FM/BZ** to select alarm tone until no tone icon shows on the display.

#### **• Stop the Alarms**

When the alarm is sounding, press any key EXCEPT the **VOLUME+/-** or **SNOOZE/DIMMER** to stop the alarm and reset it to next day.

(The BUZZER alarm will last one hour if you do not stop it; The RADIO alarm will not stop)

#### **• Snooze Operation**

Default snooze time is 9 minutes. Press and release the **SNOOZE/DIMMER** after an alarm sounds. The alarm will be silenced for the snooze time then sound again. Snooze can be pressed several times.

### **► Charging your Smart Devices or Other Personal Devices:**

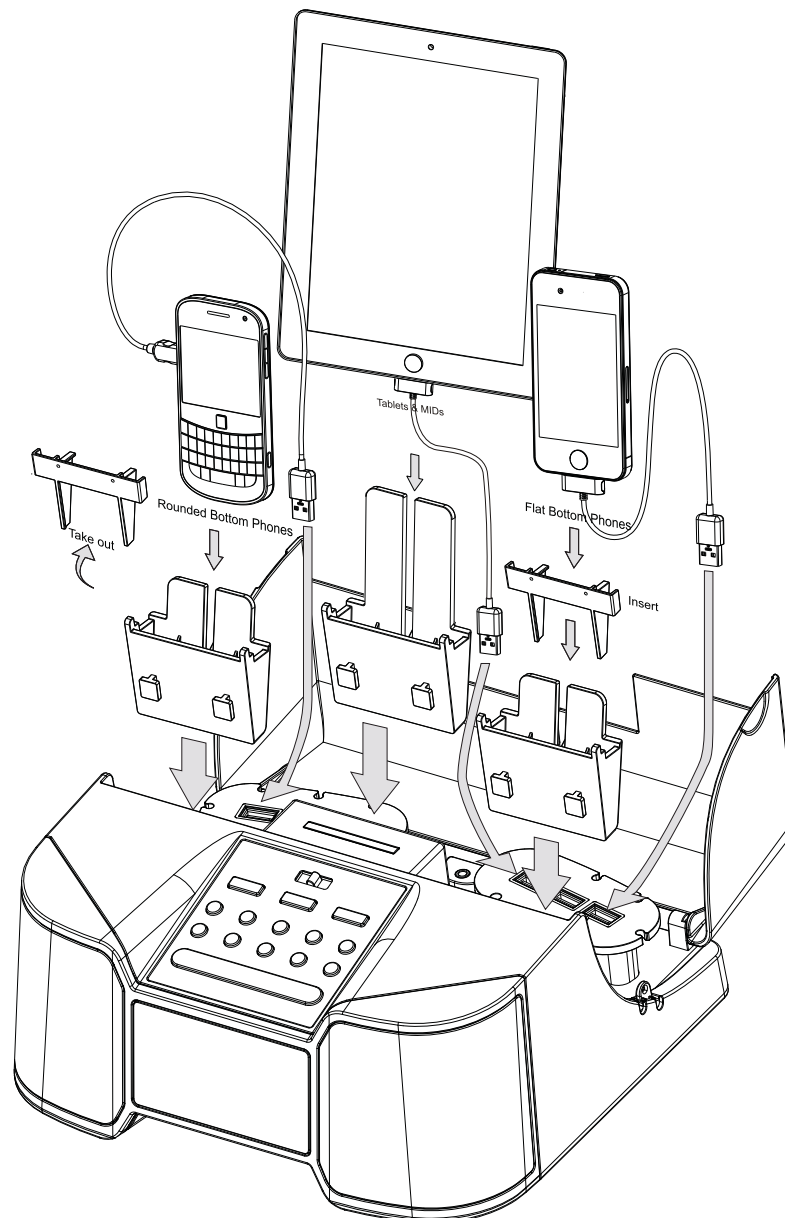
USB ports are provided to charge up to 6 devices simultaneously. Connect the USB cable between your device and the unit. USB cables are provided.

## Operations

---

- **Smart Phone and Tablet stands**

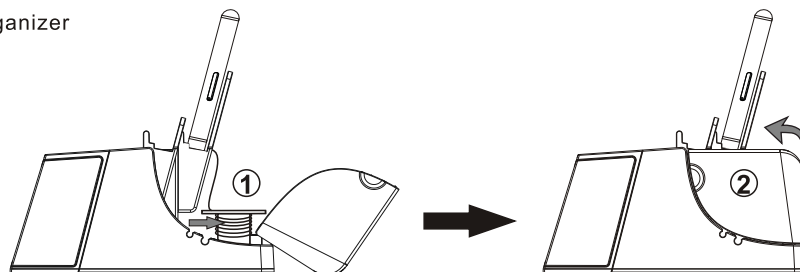
CR68 comes with 3 cradles for holding round bottom devices upright while charging. An insert for each cradle is provided to allow flat bottom devices to rest correctly in the cradle.



## Operations

---

### • Cable Organizer

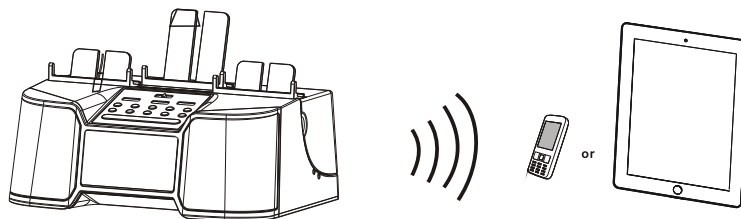


There are 2 cable organizers on the rear of the unit to help keep cables wrapped and neatly organized.

### ► Using Bluetooth

#### **STEP 1** - Pairing Your Smart Phone Using Bluetooth:

- A. Power the unit **ON** then select **SOURCE** to Bluetooth mode;
- B. Bluetooth icon flashes on the display;



#### **STEP 2** - Setting your smart device to "Discover" the Unit:

- A. Activate the Bluetooth Technology on your smart device.
- B. Select "Setup", "Connect" or the "Bluetooth" Menu on your Smart Phone.
- C. Select the option to "Discover" or "Add" a Bluetooth device.

#### **STEP 3** - Using Your Smart Device to Connect to the Unit:

- A. The Smart Device will "Discover" the Model DOK CR68.
- B. The Smart Device will ask if you want to pair with the Model DOK CR68.
- C. Select "Yes" or "OK" to accept the pairing and your Smart Device will confirm when complete.
- D. If they are paired, the Bluetooth Indicator light will be constant, and sounds "Dong".
- E. If they are not paired, the Bluetooth Indicator light will flash.
- F. Repeat "Step 3" above until they are paired.

(This unit can only be connected to one device at a time)

#### **STEP 4** - Playing Audio Via Bluetooth After Pairing:

- A. Press the **▶||** Button to "Play" or "Pause" the Audio Files from your Smart Device.
- B. To select music, search the "Music Center" or "Media Player" on your smart device.




## Operations

---

- C. Press the "Play" button on your Smart Device to start music playing.
- D. Adjust volume to maximum on your Smart Device.
- E. Control volume using the +/- buttons on the Unit.
- F. Music will "Pause" automatically when your Smart Device receives a telephone call. Music will resume when call is ended.

**STEP 5** - Music and Settings are controlled by and through the Unit.

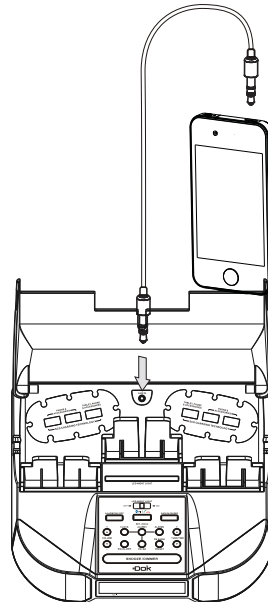
**STEP 6** - You can make phone calls after Bluetooth pairing, press   to answer a phone or double click it to call your latest dialed number and speak into MIC area.

**STEP 7** - Answer or end a telephone call using Bluetooth by pressing the   -Button.

### • Using the AUX IN Jack

An **AUX IN** jack is provided to hear your device's audio through the unit speakers.

1. Using the 3.5mm cable provided, connect one end to your device's audio-out or headphone jack and the other end to the **AUX IN** jack on the rear of unit;
2. Press and release the **AUX IN/RADIO** button until AUX appears in the screen;
3. Turn on and play your device;
4. Press and release the **VOLUME +/-** to adjust the system volume. You may need to adjust the volume on your external device as well;
5. Press and release the **EQUALIZER** button as needed to select CLASSIC, POP, JAZZ, R&B and ROCK;
6. To turn off the music, turn off your device and un-plug the AUX IN cable;
7. You can answer the phone while AUX IN is plugged in. The caller's voice will come through the speaker. When the caller hang ups, your music will be automatically resumed.



### ► Listening to Radio

#### • Setting up Antenna

Extend FM wire antenna fully for best reception. Do not strip, alter or attach to other antennas.

#### • Tuning and Playing the Radio

1. Press and release the **AUX IN/RADIO** button as needed to turn on the unit and cycle through AUX IN, FM and TIME.
2. When the desired **FM** mode is selected, press and release the **TUNE/TIME+** or **-** to tune the radio to a desired station. The current radio frequency appears in the display. Press and hold the **TUNE/TIME +** or **-** for a few seconds to scan for the next clear station.

## Operations

---

3. You can set up to 10 presets.

To Memorize a Station as a Preset.

- A. Press and release the **FM RADIO PRESET** button as needed to step through the 10 presets (P01 –P10) to the number you wish to assign. Hold the **FM RADIO PRESET** button until the selected preset number begins flashing in the display.
- B. Press and release the **TUNE/TIME +** or **–** to tune the radio to a desired station.
- C. Press and release the **FM RADIO PRESET** button to confirm the setting. Repeat A-C to preset up to 10 stations per band.

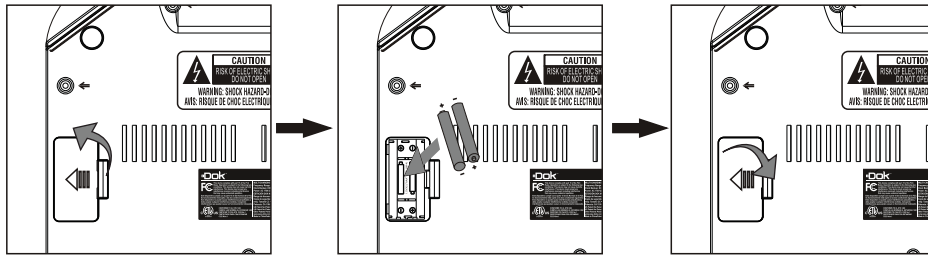
4. Press and release the **VOLUME +** or **–** to adjust the system volume. You may need to adjust the volume on your external device as well.

5. Press and release the **EQUALIZER** button as needed to select CLASSIC, POP, JAZZ, R&B, ROCK.

### • Dimmer Operation

During normal operating (when no alarm is sounding ). Press and release the **SNOOZE/DIMMER** button to control the brightness of the LCD display.

### ► Replacing the Backup Batteries



We recommend the use of alkaline batteries for longer life.

Insert 2 AAA alkaline (recommended) batteries to store alarm and clock settings in the event of power failure. As battery charge decreases, the display will become dimmer.

1. Open the battery compartment cover located on the bottom of the unit.
2. Make sure the AC adaptor is connected, or all settings may be lost during battery replacement.
3. Insert 2 AAA batteries, checking the polarity (+ and - of the battery). The – should hit the springs.
4. The tolerance of the clock is +/- 1 second per day.

### 5. Battery Warning

Do not mix with used or other battery types/brands.

Replace all batteries at the same time.

Do not open batteries.

Do not dispose of in fire.

Do not heat above 75°C.

Do not expose contents to water.

Do not charge or recharge.

Do not install backwards.

## Troubleshooting

---

Symptom	Possible Problem	Solution
Unit does not turn on	AC adaptor does not plug into the wall socket and the other end is not plugged into the power supply jack at back of the unit	Plug the adaptor into a working wall socket and plug the connector into the supply jack on the unit
Unit doesn't respond	Unit requires a reset	If unit is plugged in and doesn't respond, try resetting following these steps: a) unplug unit from the power source b) remove back up batteries c) wait a few minutes, reinstall the batteries, then resume use
AUX IN sound is too low	System or your personal device volume setting is too low	Turn up the unit or your personal device volume
Cannot get paired with Bluetooth	Unit in the wrong mode	Set to Bluetooth mode by button AUX IN/RADIO/BLUETOOTH
Sound is distorted	Volume level is set too high	Decrease the volume
	Sound source is distorted	If the smart phone/tablet or other device sound source is old or of poor quality, distortion and noise are easily noticed with high-power speakers. Try a different audio file from a trusted source.
FM band radio is very noisy	FM loop antenna isn't located properly	Move the FM loop antenna away from the main unit and rotate it for best reception
Alarm not working	AM/PM time/alarm time not set correctly	When setting clock or alarm time, take note of the AM/PM indicators
Tablet won't charge	Wrong USB port is plugged in	Only the <b>red</b> USB port provides 5V/ 2.1A power for most of the tablet charging

# ORDER FORM

## ACCESSORY USB CHARGING CORDS

USB charging cords for pre-Smart Phone generations



AP Devices  
Price: \$5.00  
Sku: UCAP  
Buy Now ☐



Samsung/Tablet  
Price: \$5.00  
Sku: UC800  
Buy Now ☐



Mini USB  
Price: \$5.00  
Sku: UCMV3  
Buy Now ☐



Micro USB  
Price: \$5.00  
Sku: UCMV8  
Buy Now ☐

**Make Checks or Money Orders Payable to: DOK Solution, LLC. Add \$5.95 S&H.**

PLEASE PRINT CLEARLY

Name: \_\_\_\_\_

Address: \_\_\_\_\_

City: \_\_\_\_\_ State: \_\_\_\_\_ Zip: \_\_\_\_\_

Phone: \_\_\_\_\_

Email: \_\_\_\_\_

Brand of Phone: \_\_\_\_\_ Model No.: \_\_\_\_\_

☐ Visa ☐ MasterCard ☐ Discover ☐ AMEX

CC# \_\_\_\_\_

Exp Date: \_\_\_\_\_ / \_\_\_\_\_ CVV \_\_\_\_\_ Signature: \_\_\_\_\_

1185 Gooden Crossing

Largo, FL 33778

[www.Easy-Doks.com](http://www.Easy-Doks.com)