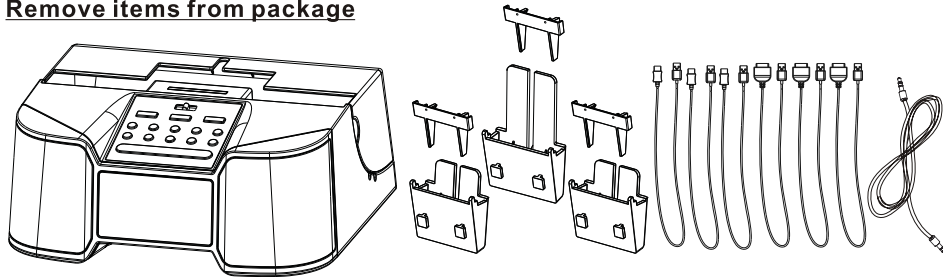
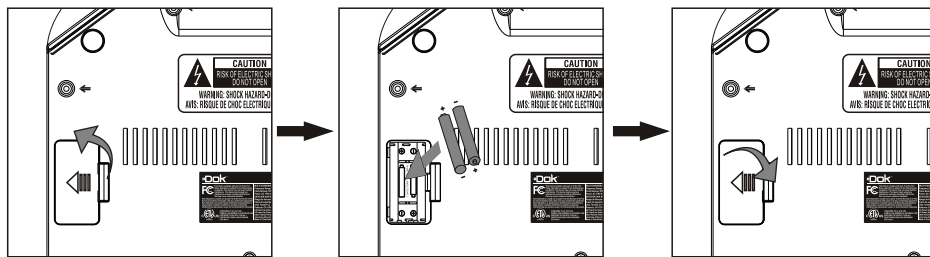


Quick Start On Charging Your Device

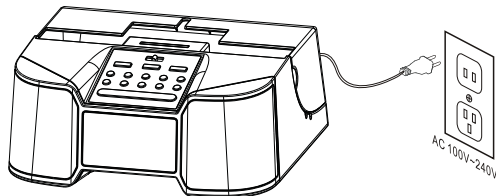
Remove items from package



Install 2pcs of AAA batteries

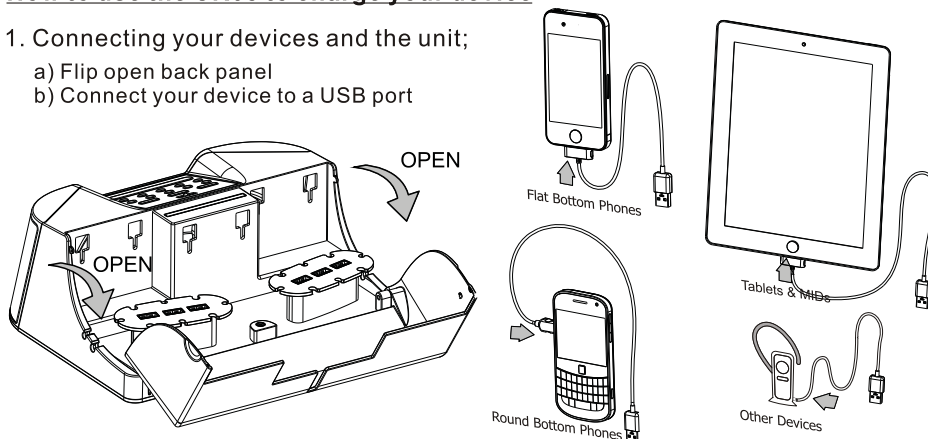


Connect unit to power outlet



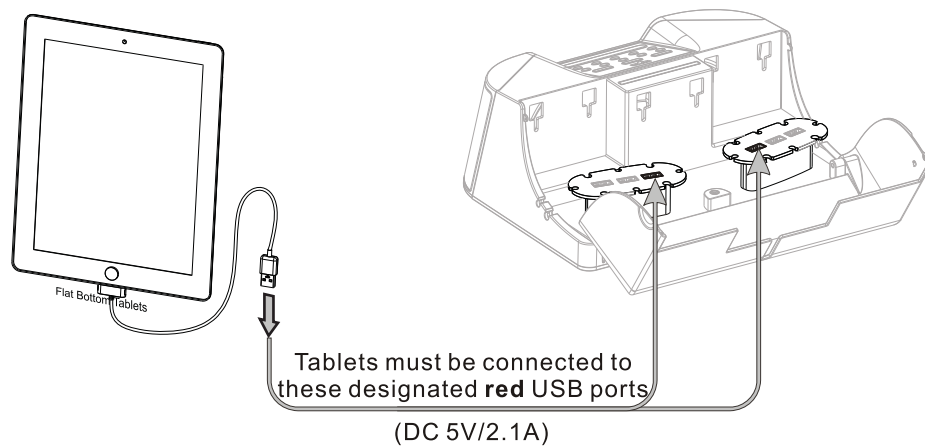
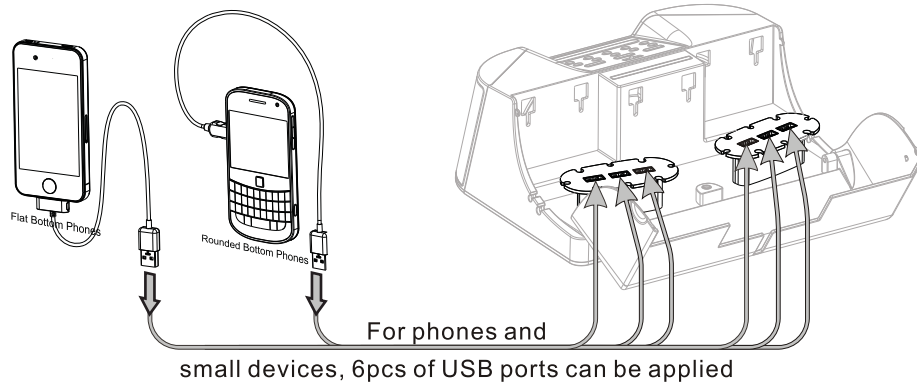
How to use the CR68 to charge your device

1. Connecting your devices and the unit;
 - a) Flip open back panel
 - b) Connect your device to a USB port

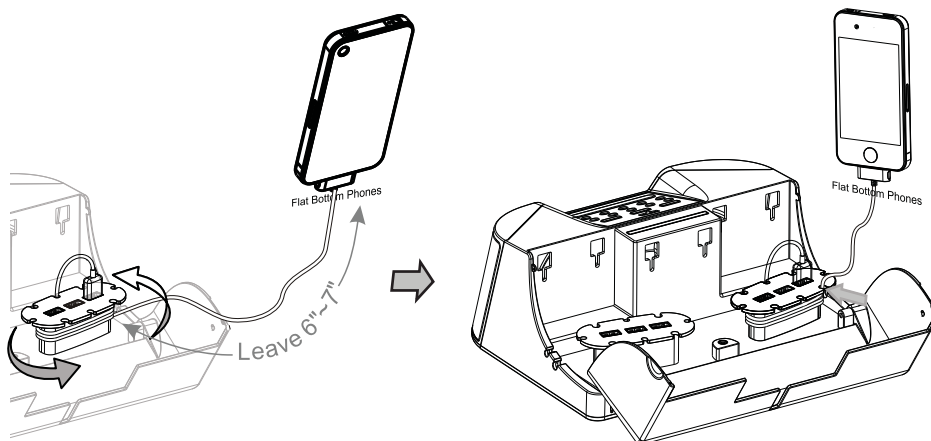


Quick Start On Charging Your Device

2. Connect your device to any of the 6 USB ports available

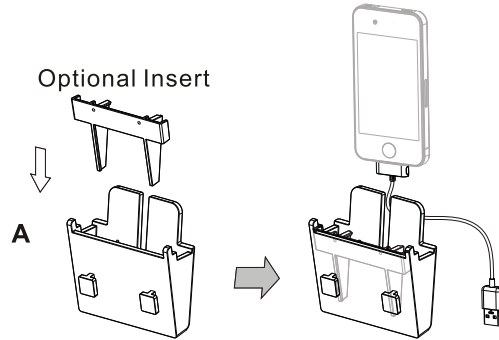


3. Wrap your cord:

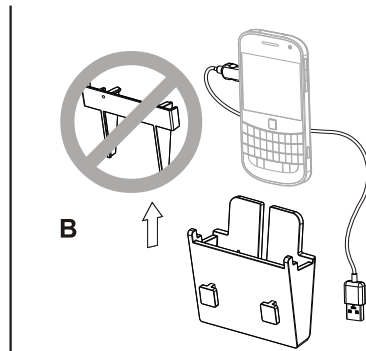


Quick Start On Charging Your Device

4. Your phone's shape will determine if an insert is needed. Use the insert for flat bottom phones. Round bottom phones do not need the insert.



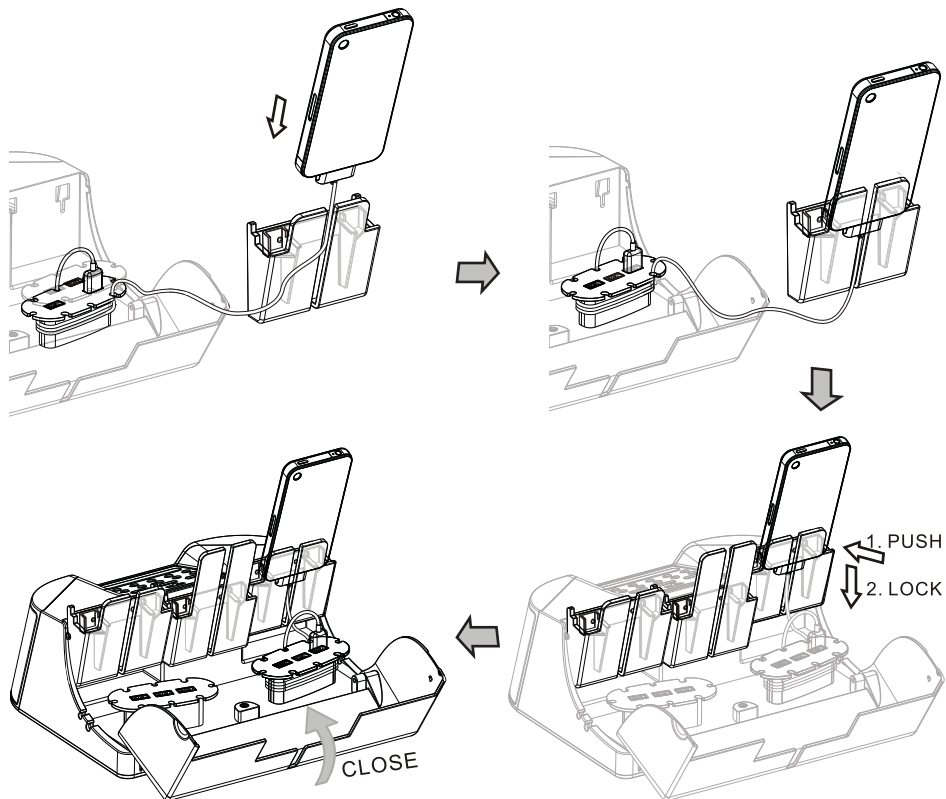
For FLAT bottom phones



For ROUND bottom phones

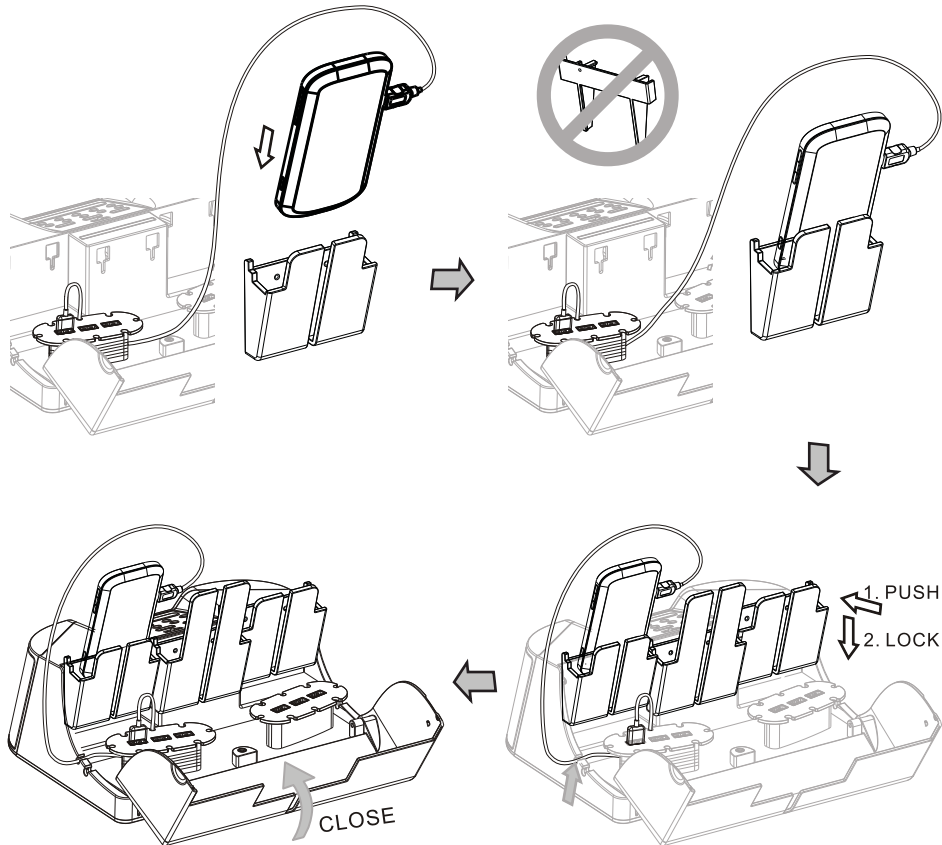
5. Wrap excess cable around cable organizer leaving enough cable to allow phone to be inserted into cradle.

a. For FLAT bottom phones

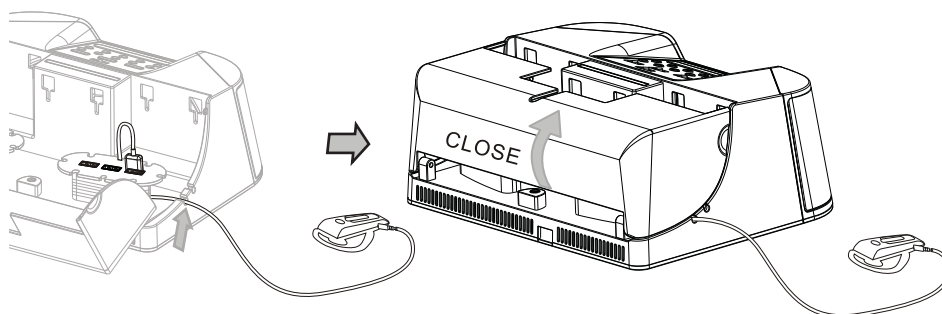


Quick Start On Charging Your Device

b. For ROUND bottom phones, take out the insert.



c. For other devices



d. For TABLETS & MIDs

AUX IN port is available to listen to any device's media. Connect headphone jack to AUX IN with provided cable.

AUX IN cable

