

Within this document, whenever only LC 231 is mentioned it means that the view is identical for LC 231 2x1-7.6 DOL PI and LC 231 1x1-9.6 DOL PI



Figure 1 Inside view of LC 231 Cover

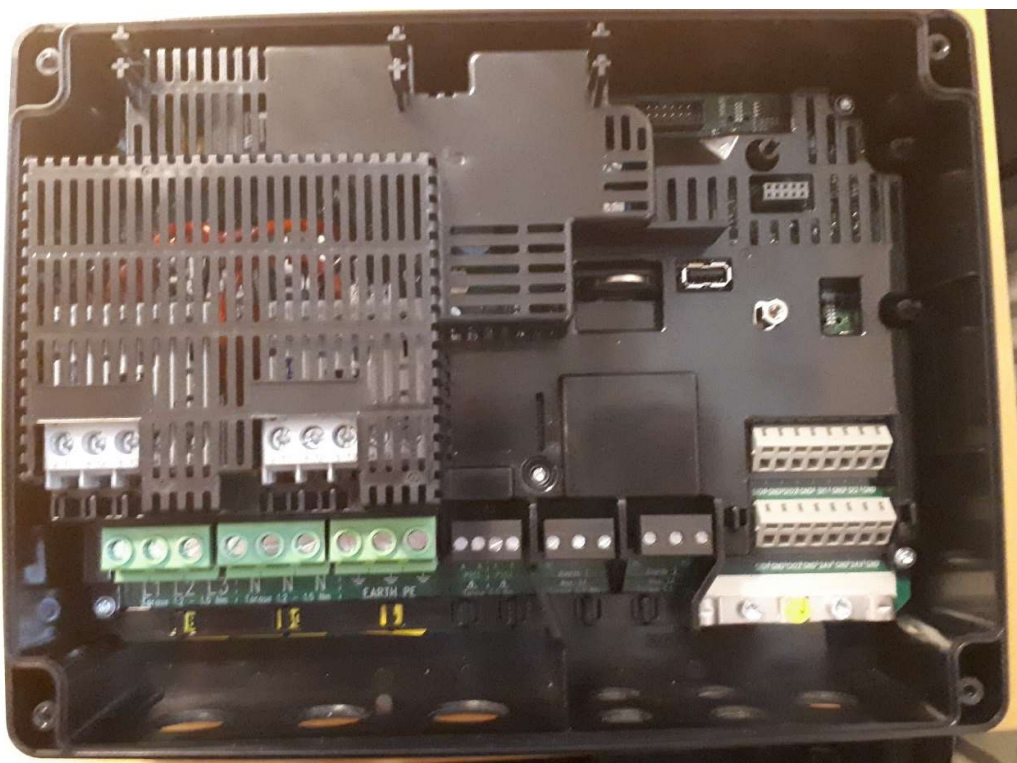


Figure 2 Inside view of LC 231

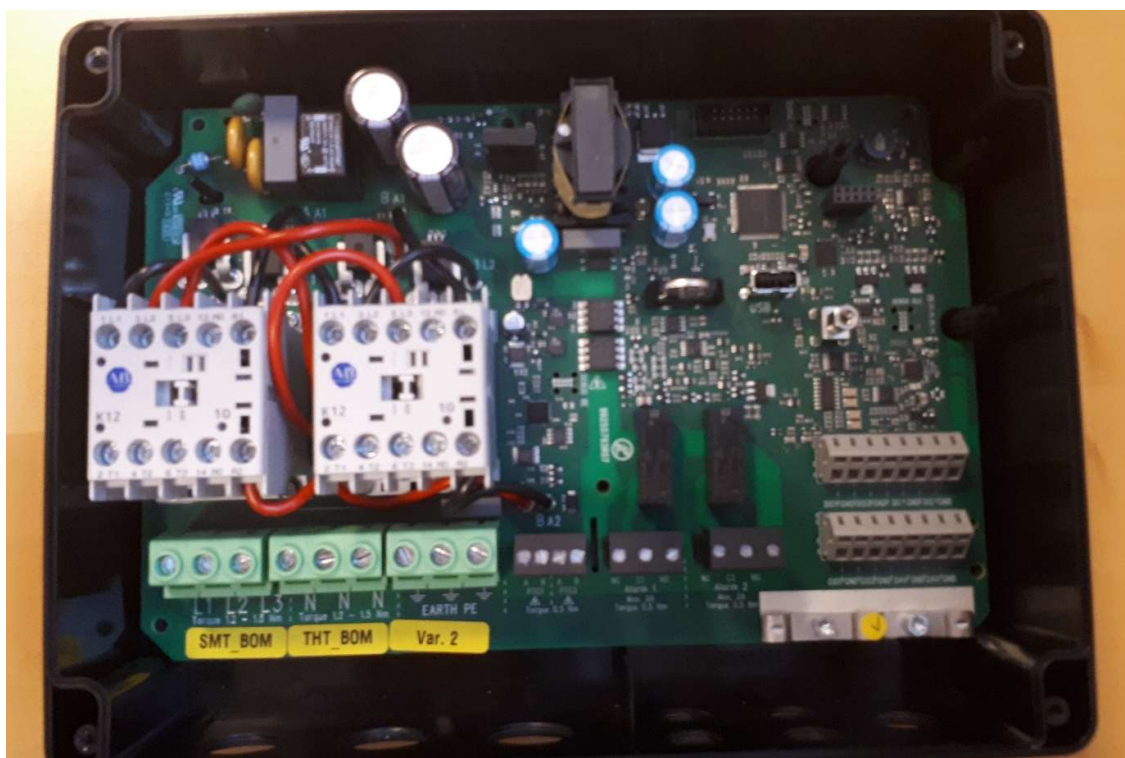


Figure 3 Inside view of LC 231 with protective cover removed

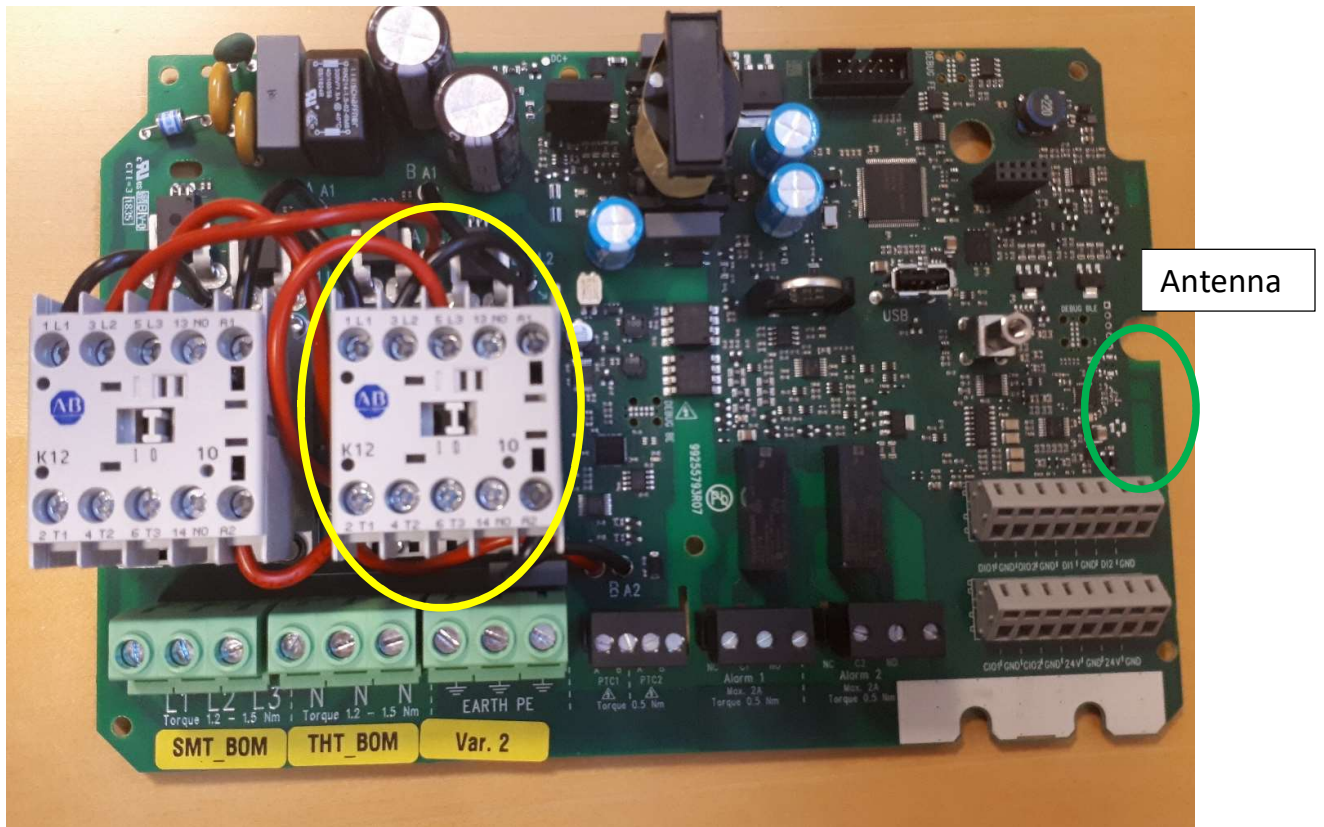


Figure 4 Top view of LC 231 2x1-7.6 DOL PI Main PCB. Power components inside yellow circle is not mounted in LC 231 1x1-9.6 DOL PI. Antenna part of PCB encircled in green

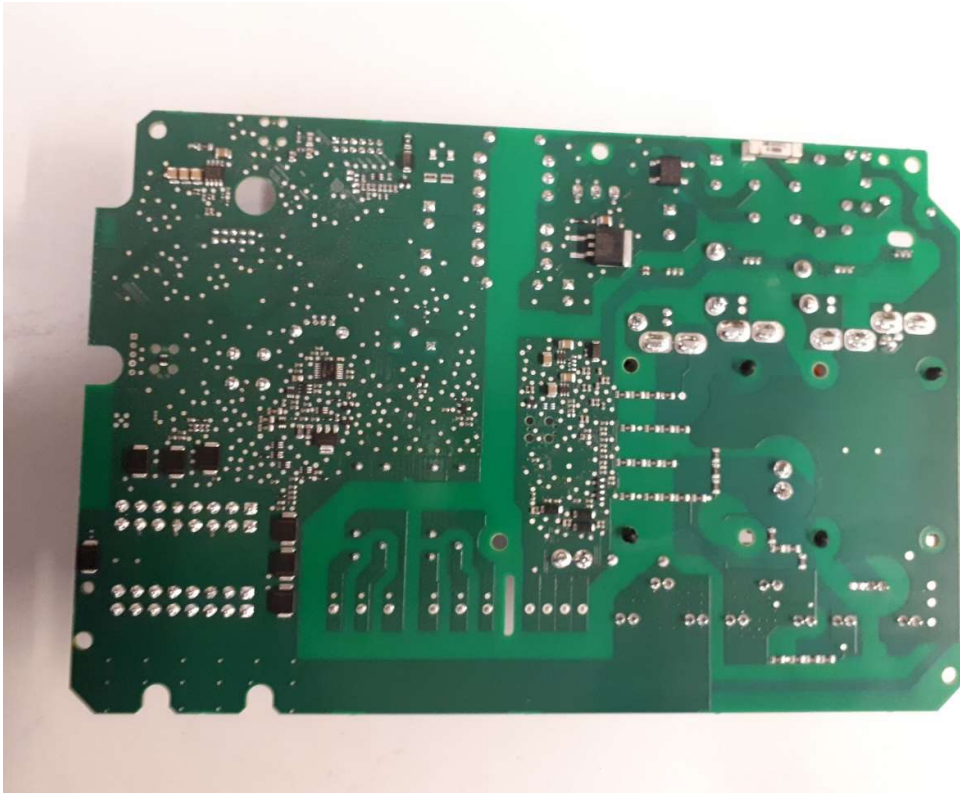


Figure 5 Bottom view of LC 231 Main PCB



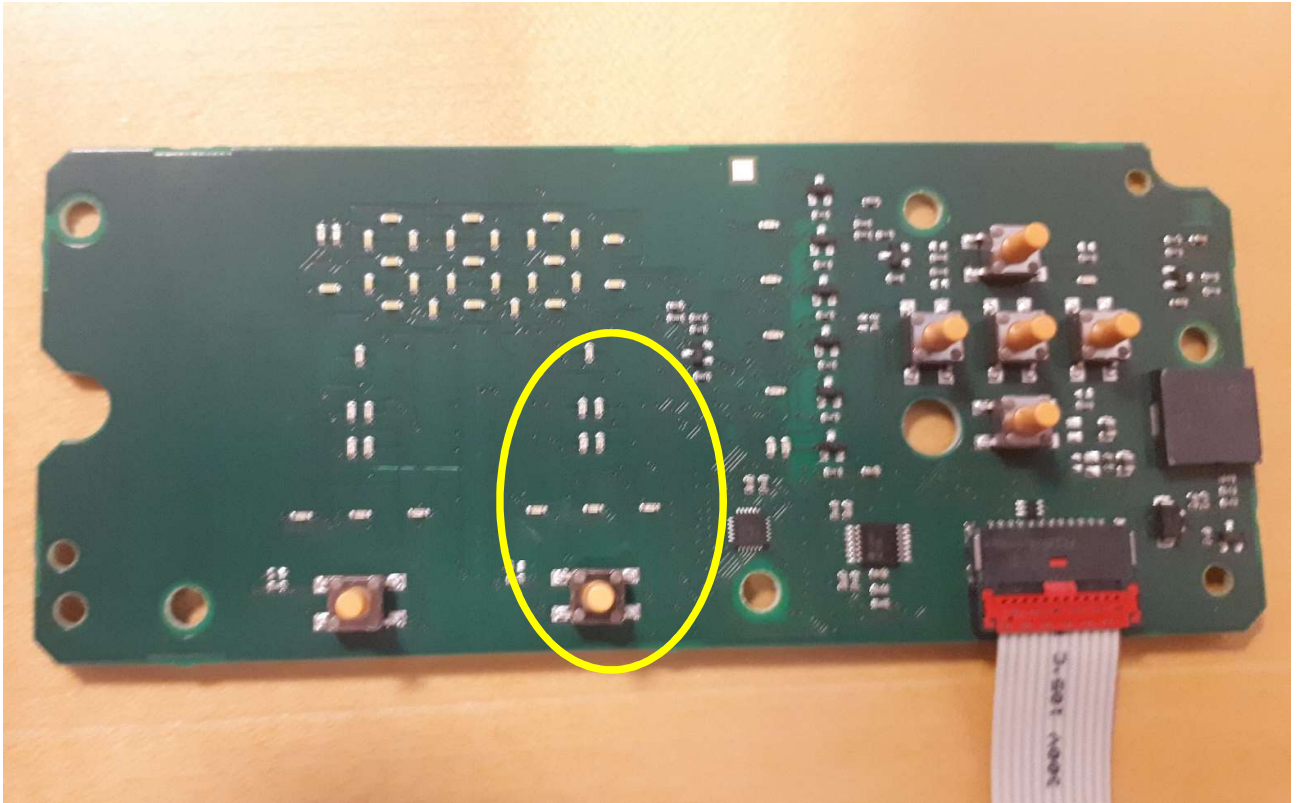


Figure 6 Top view of LC 231 2x1-7.6 DOL PI HMI PCB. Components inside yellow circle is not mounted in LC 231 1x1-9.6 DOL PI.



Figure 7 Bottom view of LC 231 HMI PCB