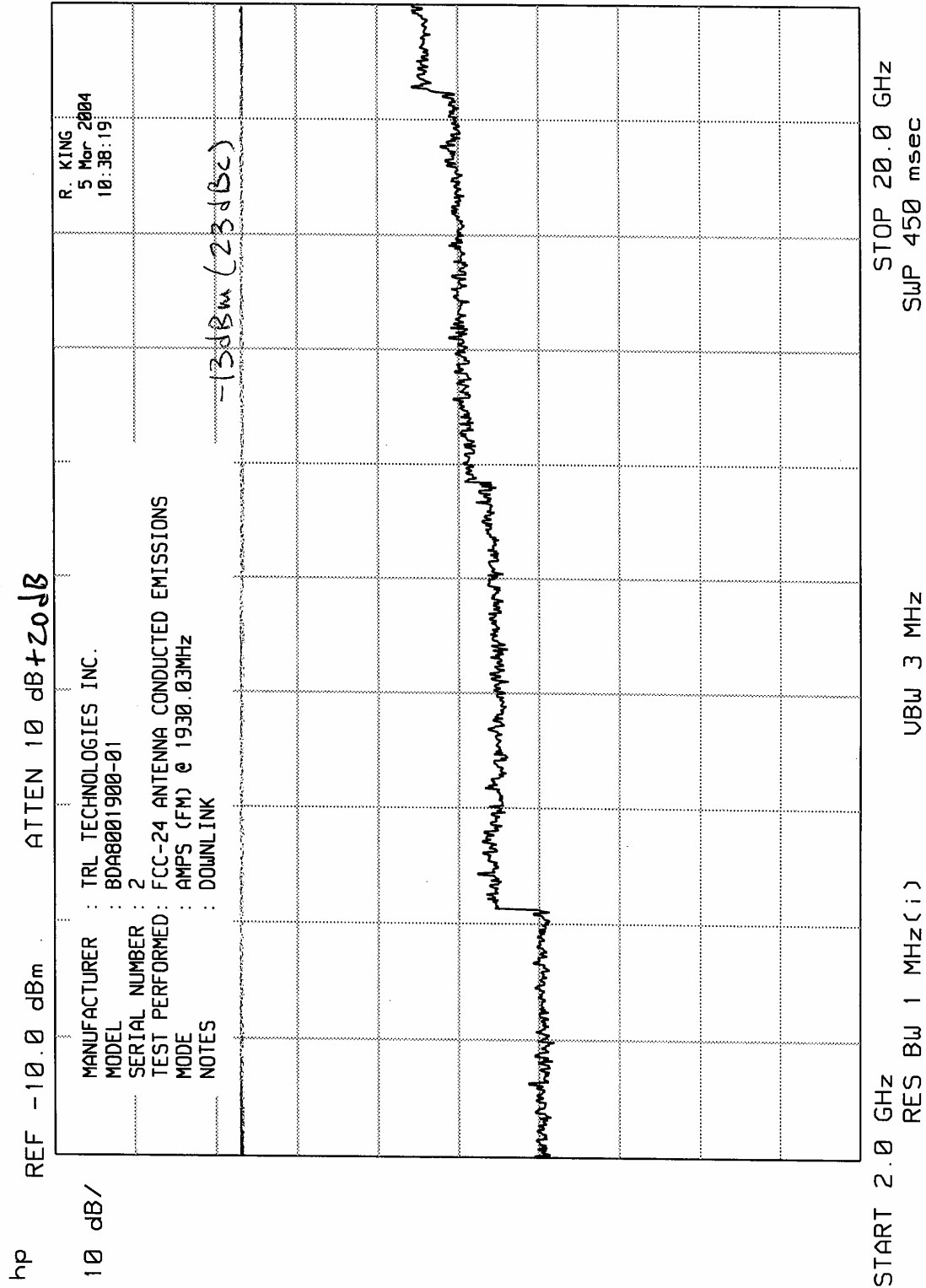
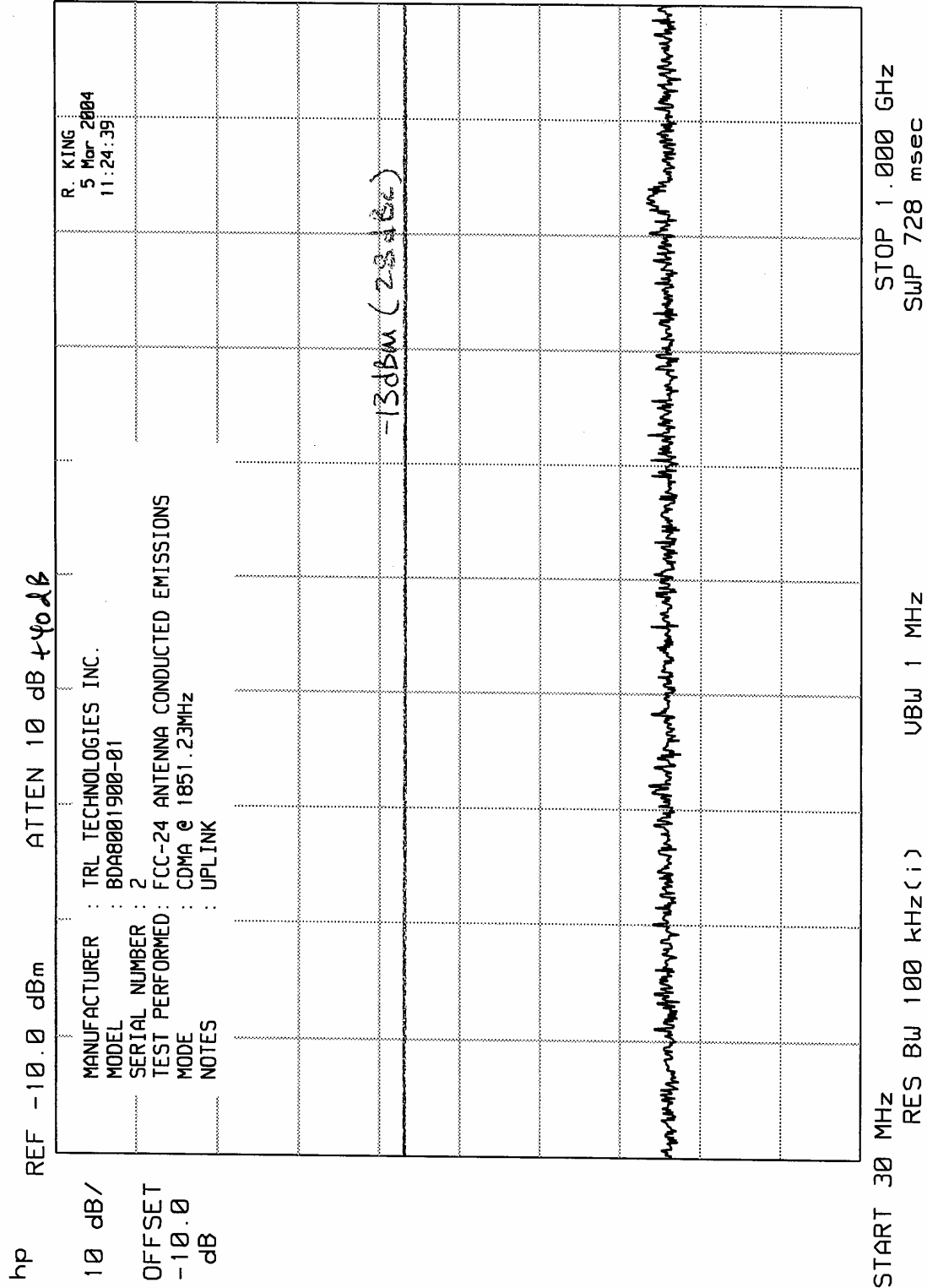


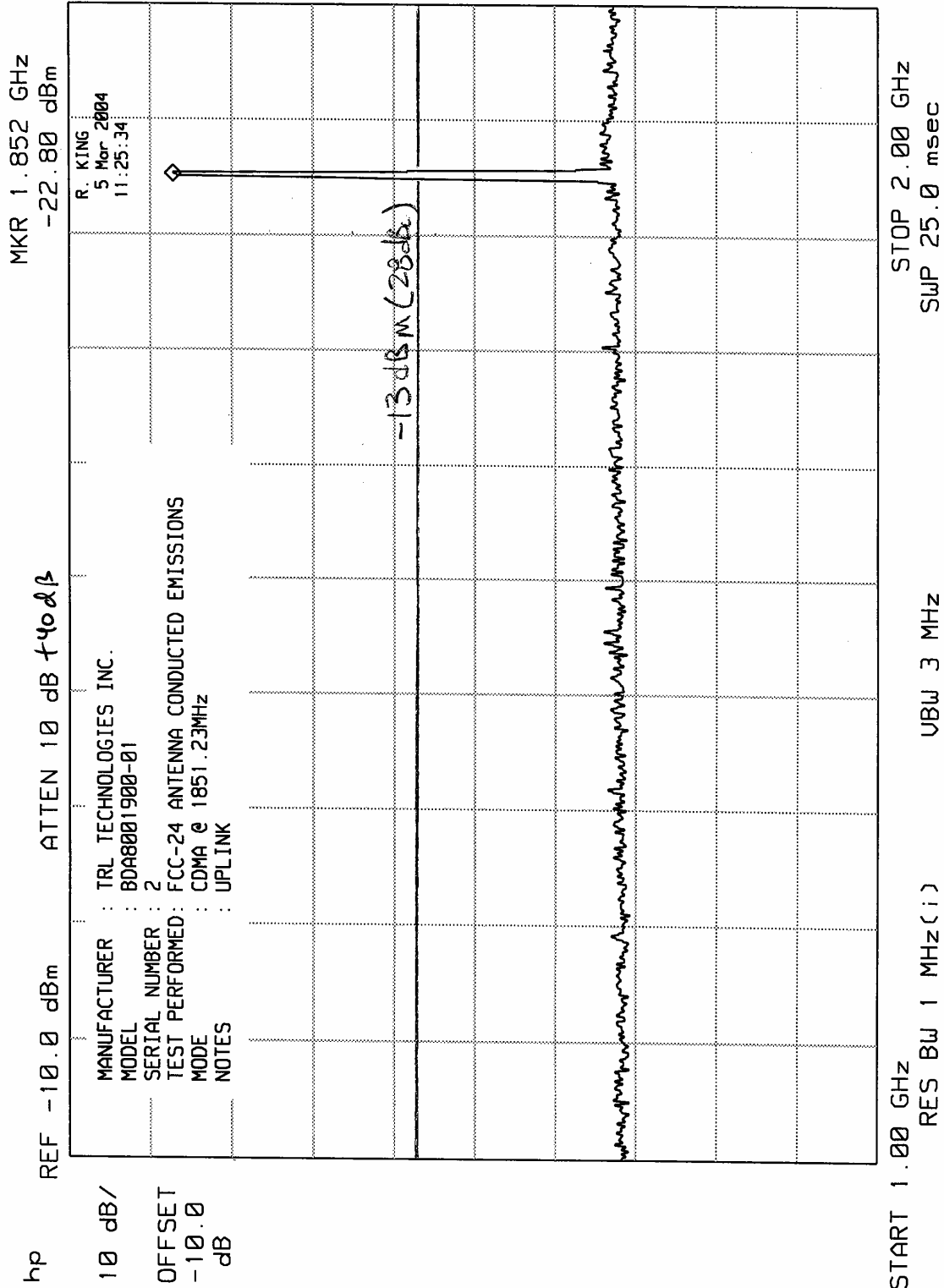
ELITE ELECTRONIC ENGINEERING INC.



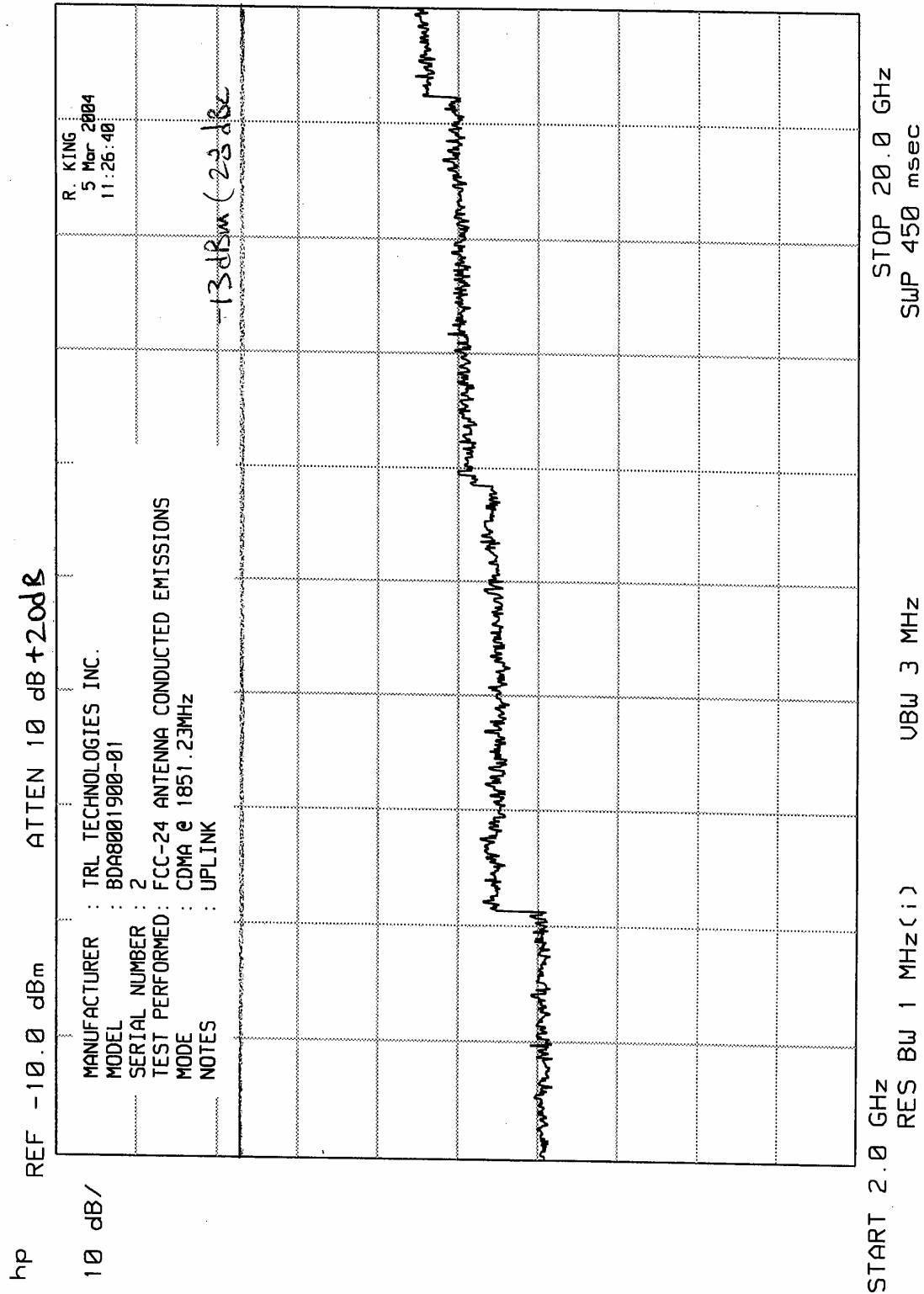
ELITE ELECTRONIC ENGINEERING INC.



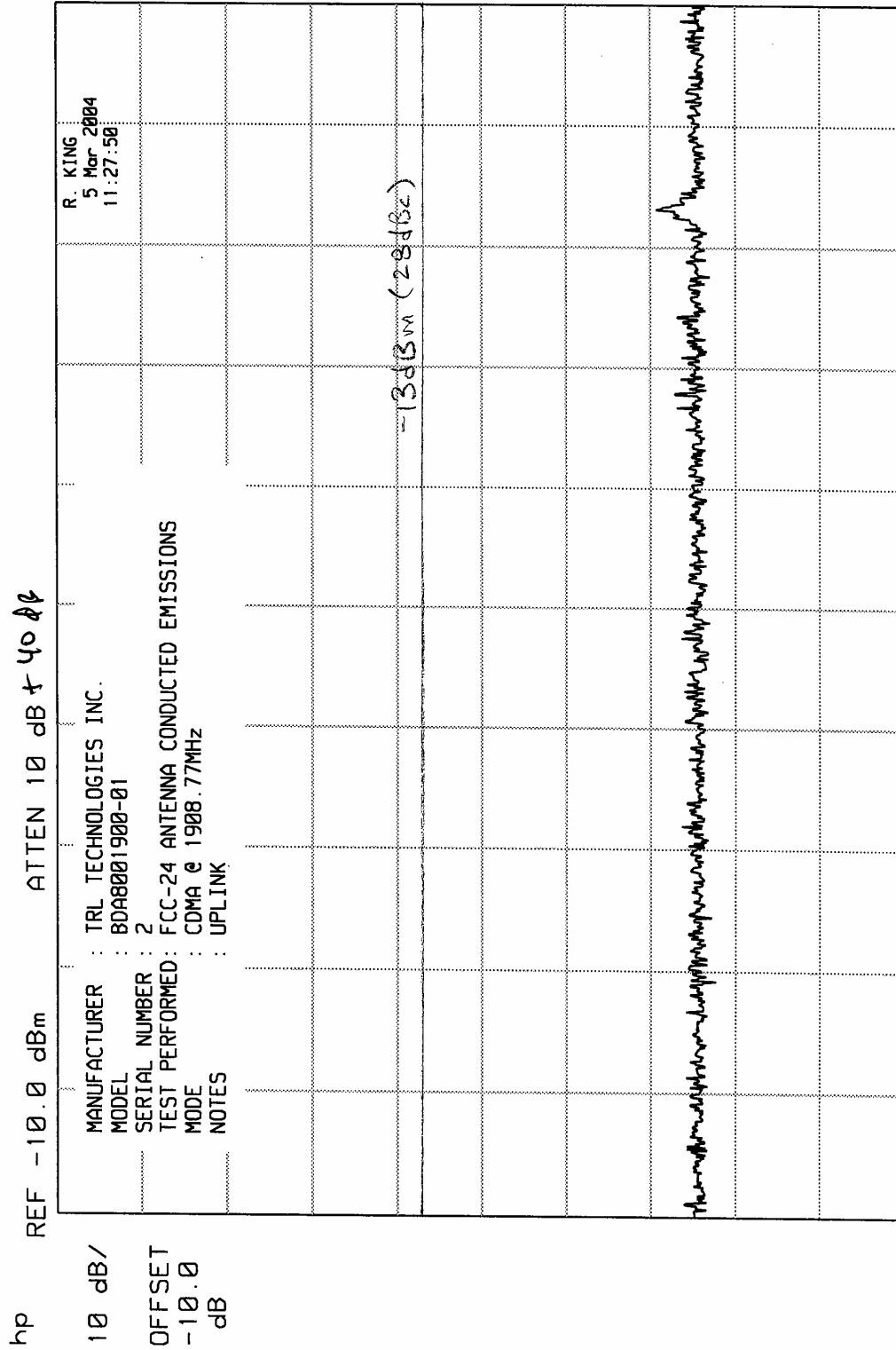
ELITE ELECTRONIC ENGINEERING INC.



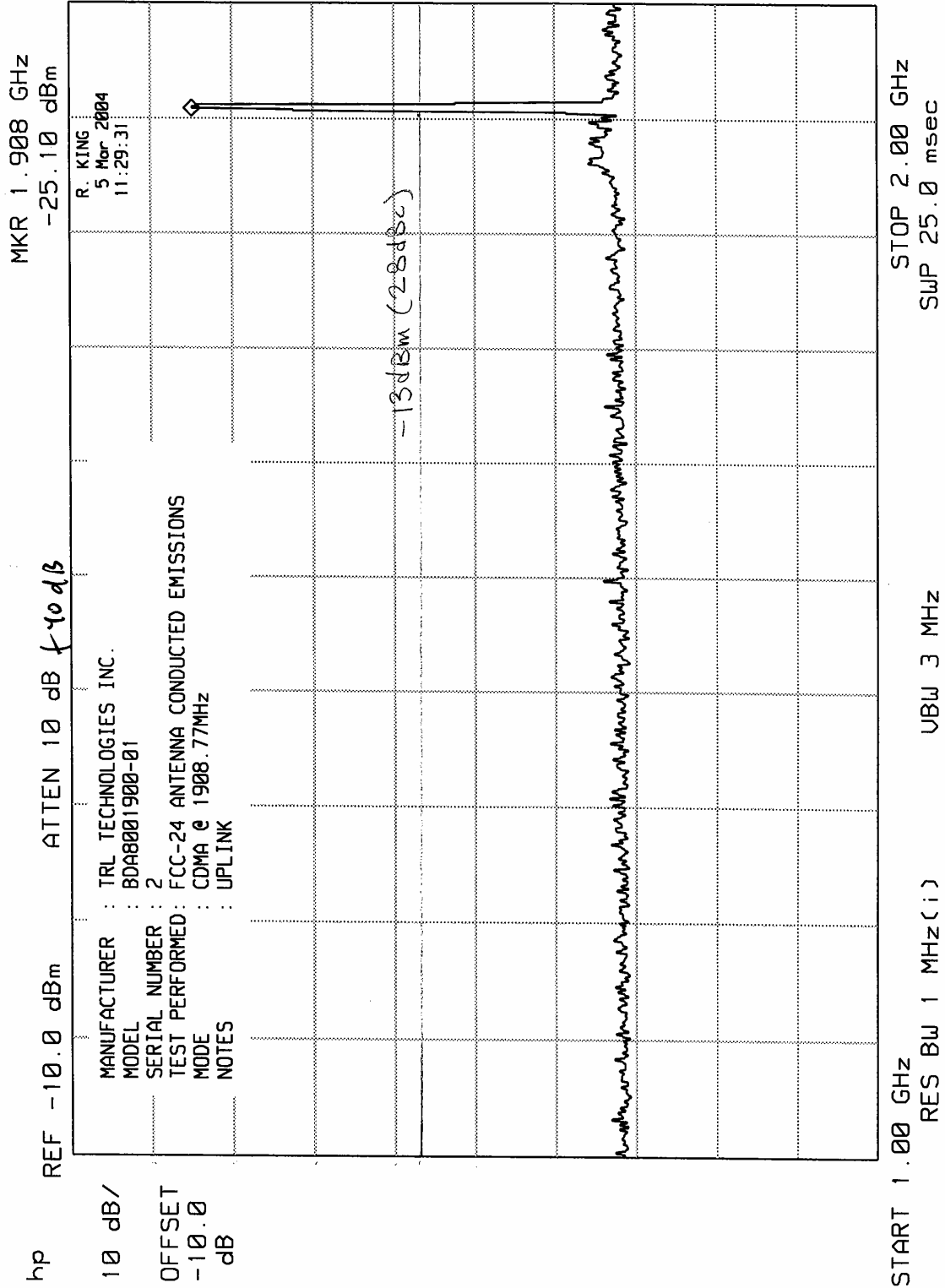
ELITE ELECTRONIC ENGINEERING Inc.



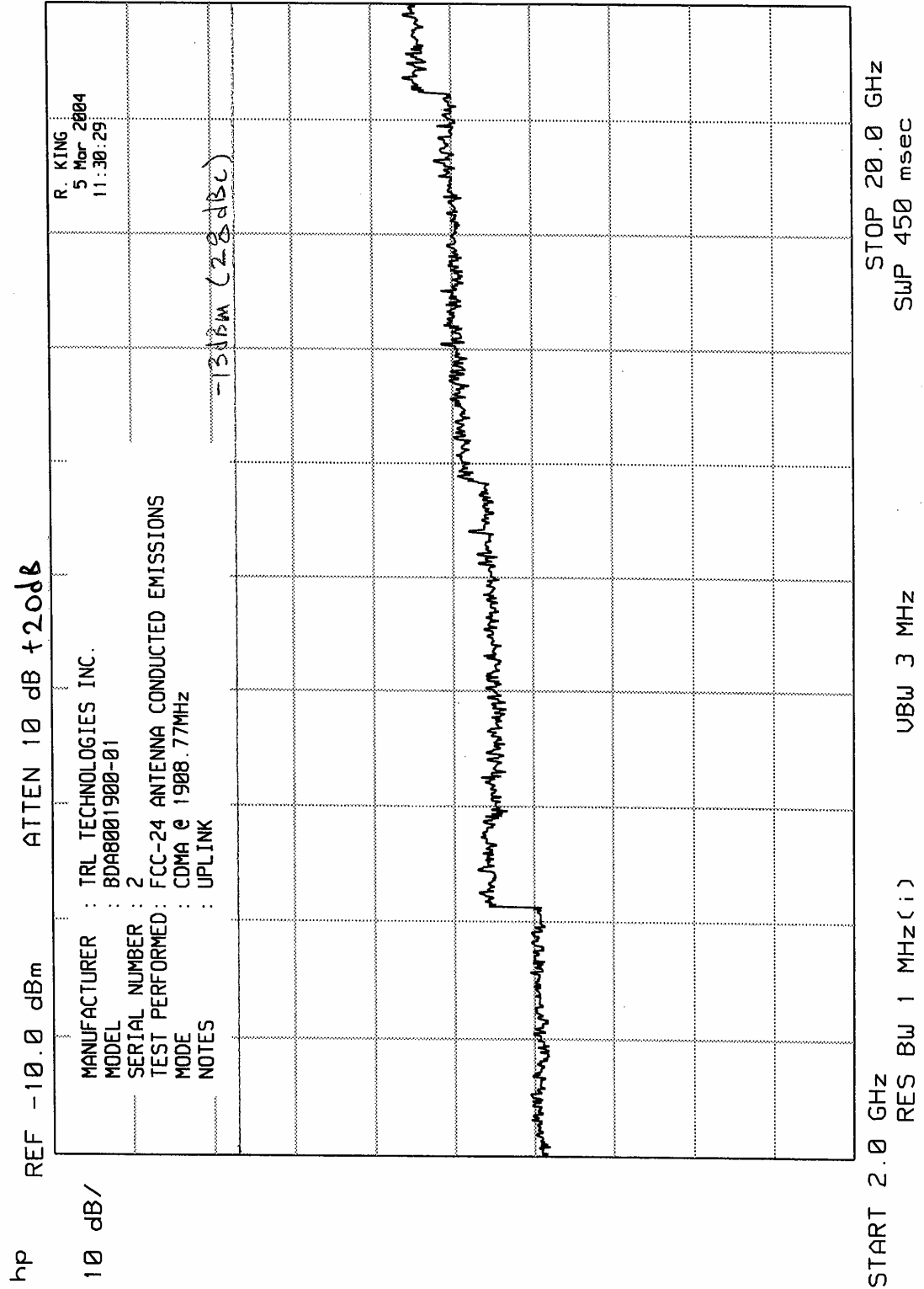
ELITE ELECTRONIC ENGINEERING INC.



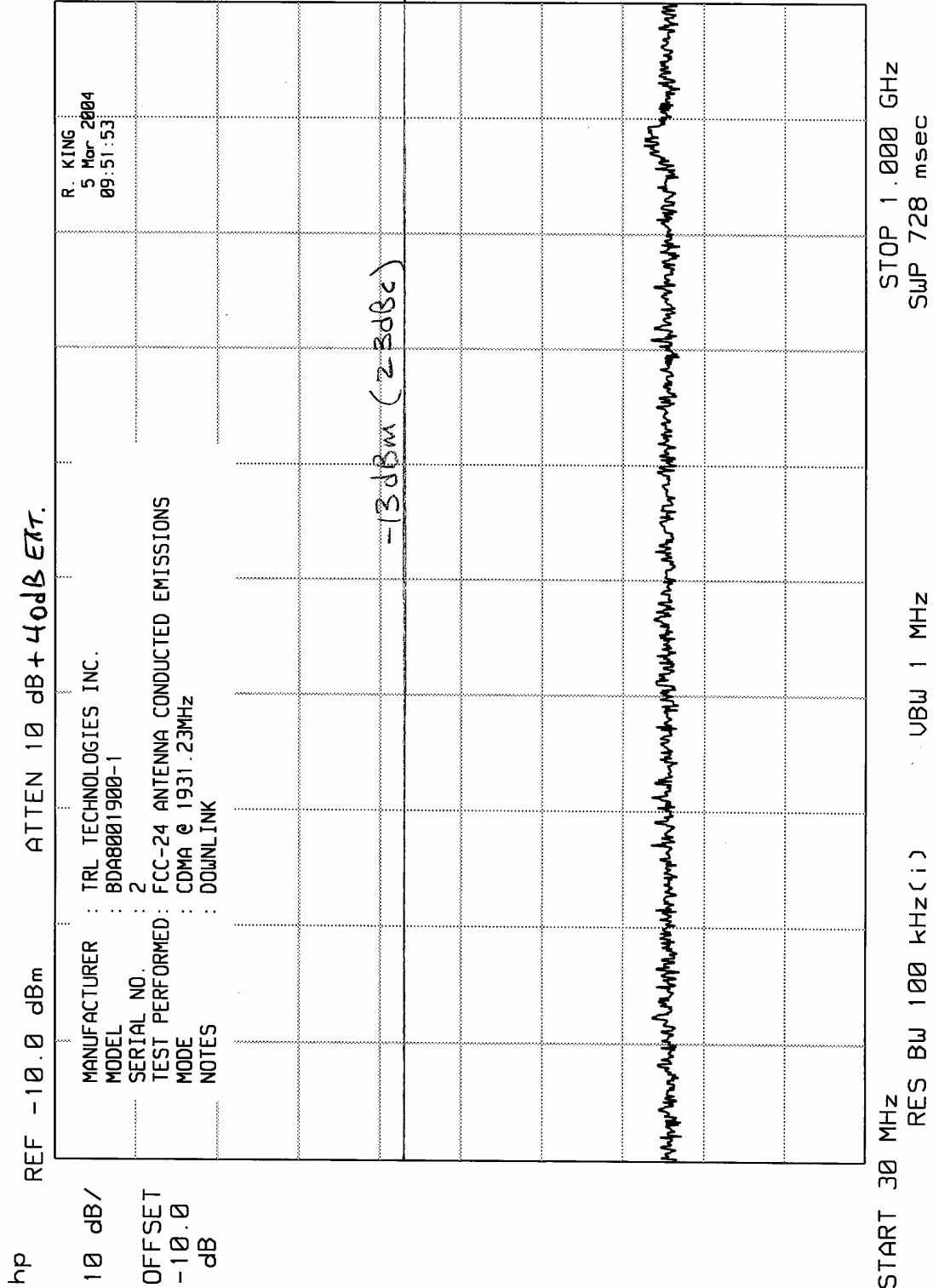
ELITE ELECTRONIC ENGINEERING INC.



ELITE ELECTRONIC ENGINEERING INC.

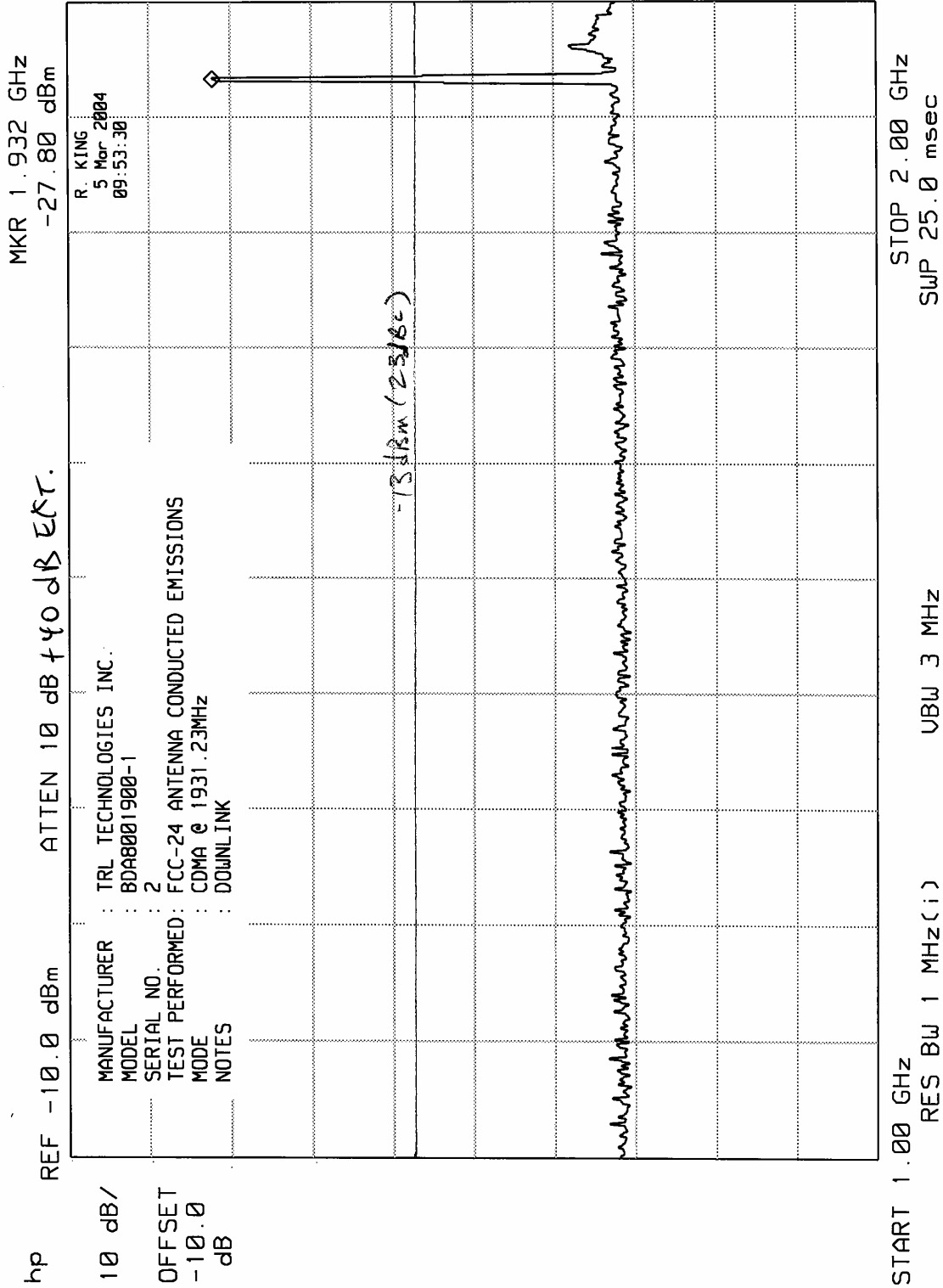


ELITE ELECTRONIC ENGINEERING Inc.

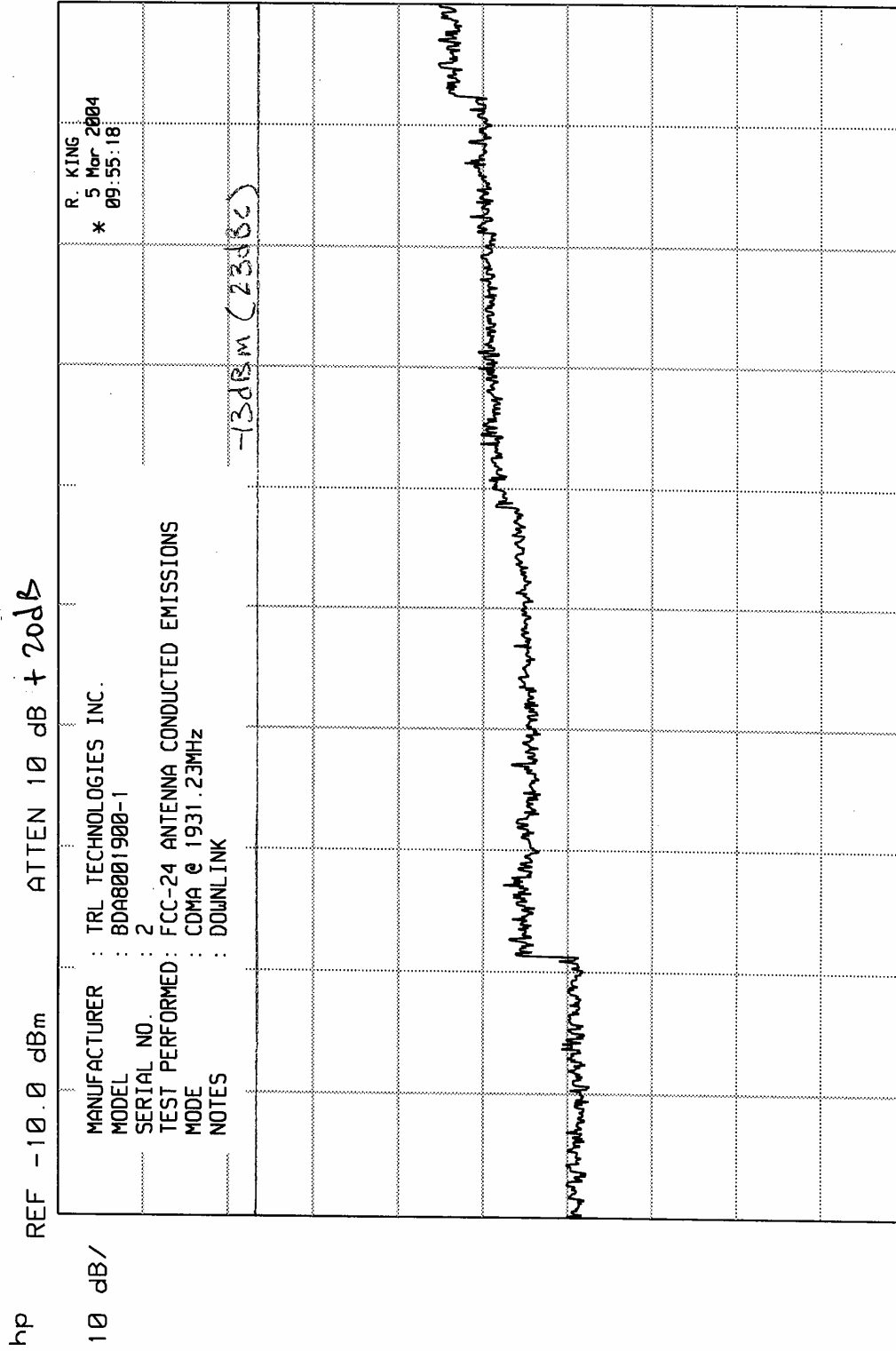




ELITE ELECTRONIC ENGINEERING Inc.



ELITE ELECTRONIC ENGINEERING INC.



ELITE ELECTRONIC ENGINEERING Inc.

hp 10 dB/

REF -10.0 dBm ATTEN 10 dB +40 dB EX.

MANUFACTURER : TRL TECHNOLOGIES INC.  
 MODEL : BDA8001900-1  
 SERIAL NO. : 2  
 TEST PERFORMED : FCC-24 ANTENNA CONDUCTED EMISSIONS  
 MODE : CDMA @ 1988.77MHz  
 NOTES : DOWNLINK

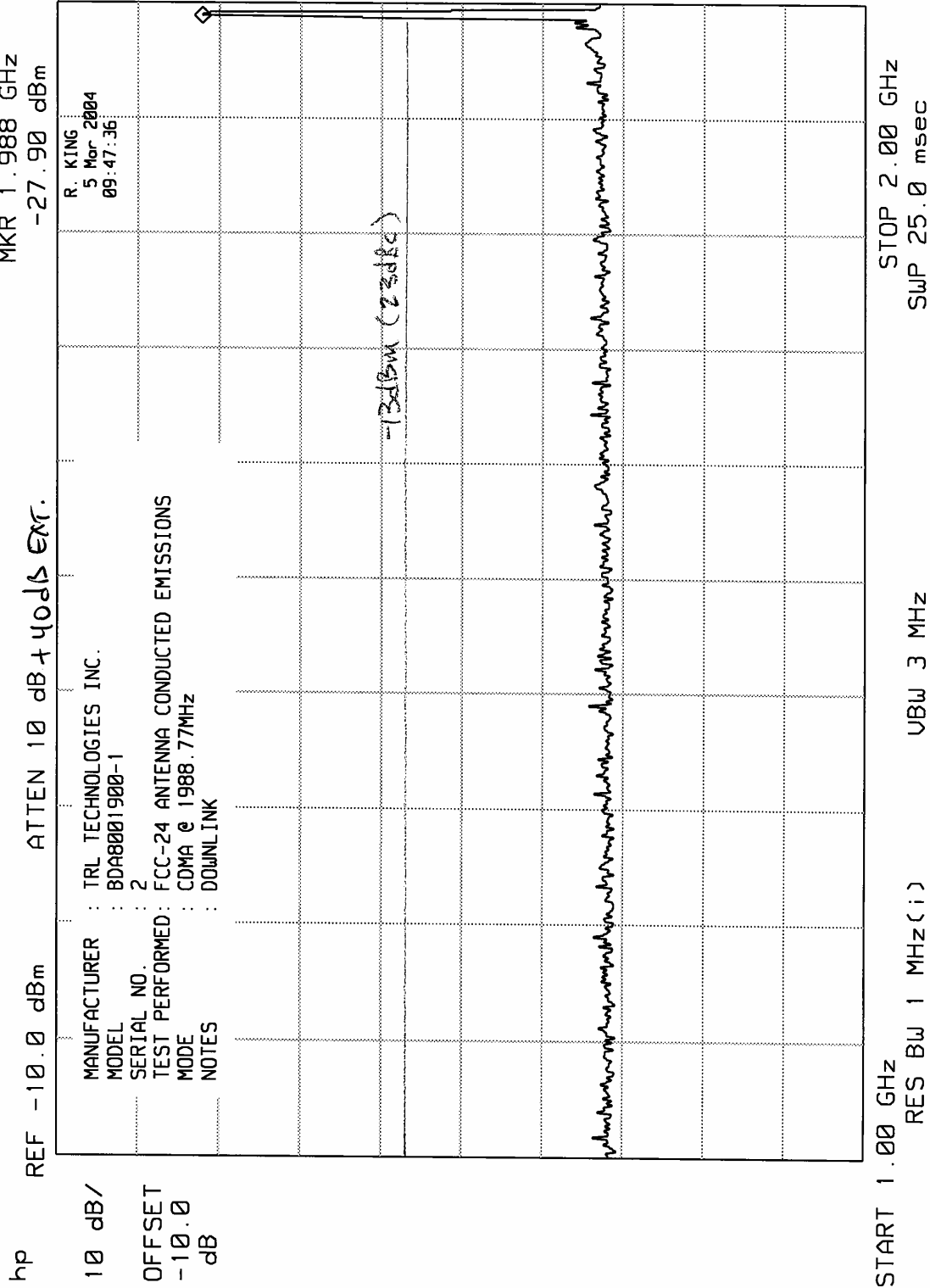
OFFSET -10.0 dB

R. KING  
 \* 5 Mar 2004  
 09:45:59

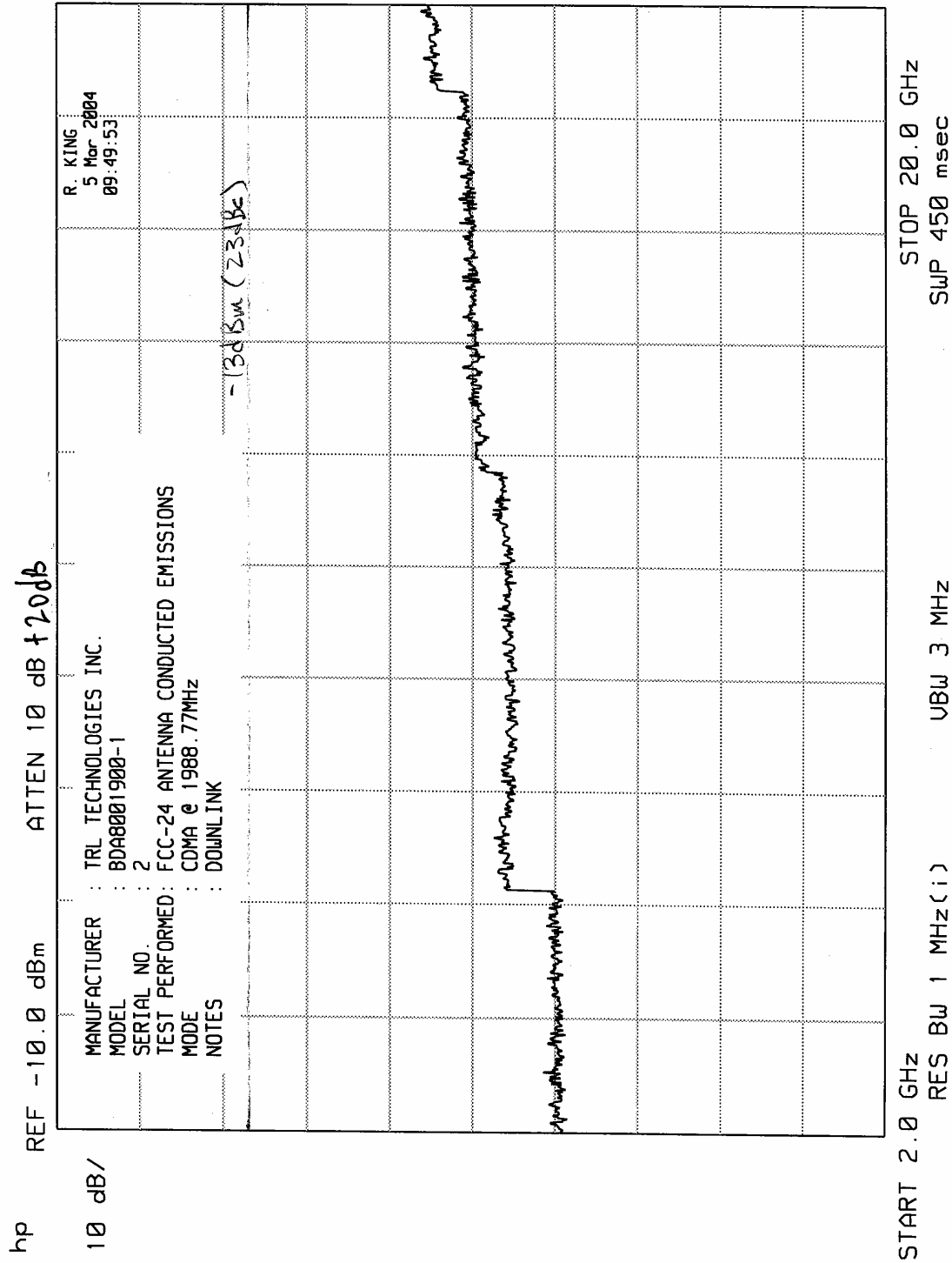
-13dBm (23dBc)

START 30 MHz RES BW 100 kHz (i) STOP 1.000 GHz  
 SWP 728 msec

ELITE ELECTRONIC ENGINEERING Inc.



ELITE ELECTRONIC ENGINEERING INC.





ELITE ELECTRONIC ENGINEERING INC.

MKR 1.850 GHz  
-26.00 dBm

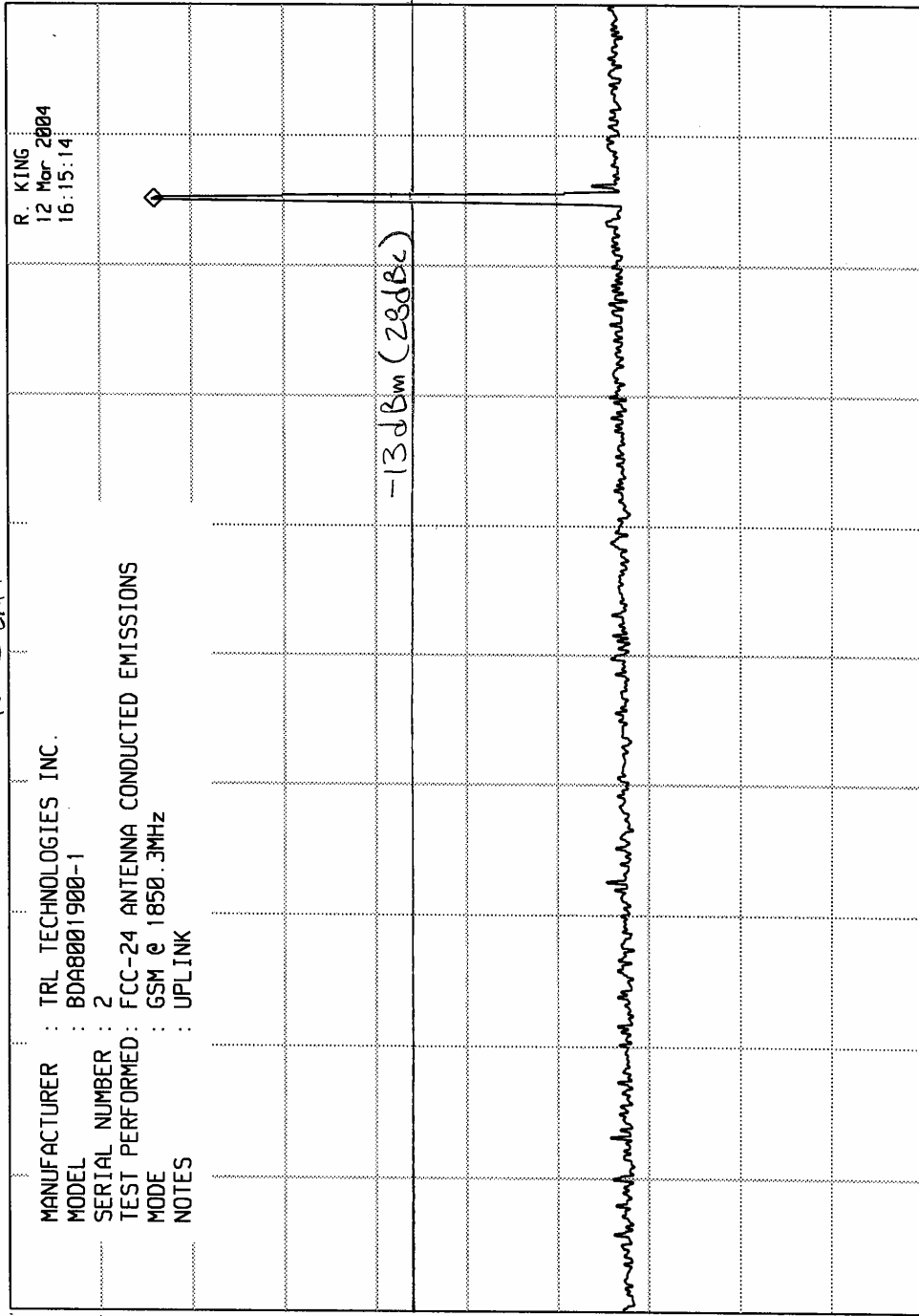
ATTEN 10 dB + 40 dB EXT.

REF -10.0 dBm

hp

10 dB/

OFFSET  
-10.0  
dB



STOP 2.00 GHz  
SWP 25.0 msec

UBW 3 MHz

RES BW 1 MHz (i)

START 1.00 GHz

MKR 3.12 GHz  
-70.90 dBm

29

10 dB/

ATTEN 10 dB + zods ext

REF -10.0 dBm

MANUFACTURER : TRL TECHNOLOGIES INC.  
MODEL : BDA8001900-1

SERIAL NUMBER : 2

TEST PERFORMED: FCC-24 ANTENNA CONDUCTED EMISSIONS

MODE : GSM @ 1809.7MHz- 1850.3MHz

NOTES : UPLINK

$$-13 \text{ dBm} (28 \text{ dBc})$$

MANUFACTURER : TRL TECHNOLOGIES INC.	R. KING
MODEL : BDA8001900-1	12 Mar 2004
SERIAL NUMBER : 2	16:22:14
TEST PERFORMED : FCC-24 ANTENNA CONDUCTED EMISSIONS	
MODE : GSM @ 1900.7MHz 1850.3 MHz	
NOTES : UPLINK	
	-13dBm (28dBc)

START 2.0 GHz	STOP 20.0 GHz
RES BW 1 MHz(i)	SUP 450 msec
	VBW 3 MHz





ELITE ELECTRONIC ENGINEERING INC.

MKR 839.0 MHz  
-85.20 dBm

hp REF -10.0 dBm ATTEN 10 dB + 40dB EXT

10 dB/ OFFSET -10.0 dB	MANUFACTURER : TRL TECHNOLOGIES INC. MODEL : BDA8801900-1 SERIAL NUMBER : 2 TEST PERFORMED : FCC-24 ANTENNA CONDUCTED EMISSIONS MODE : GSM @ 1909.7MHz NOTES : UPLINK	R. KING 12 Mar 2004 16:17:00
		-13dBm (29dBc)

```
START 30 MHz
RES BW 100 kHz(:)
UBW 1 MHz
STOP 1.000 GHz
SWP 728 msec
```

ELITE ELECTRONIC ENGINEERING Inc.

MKR 1.909 GHz  
-26.60 dBm

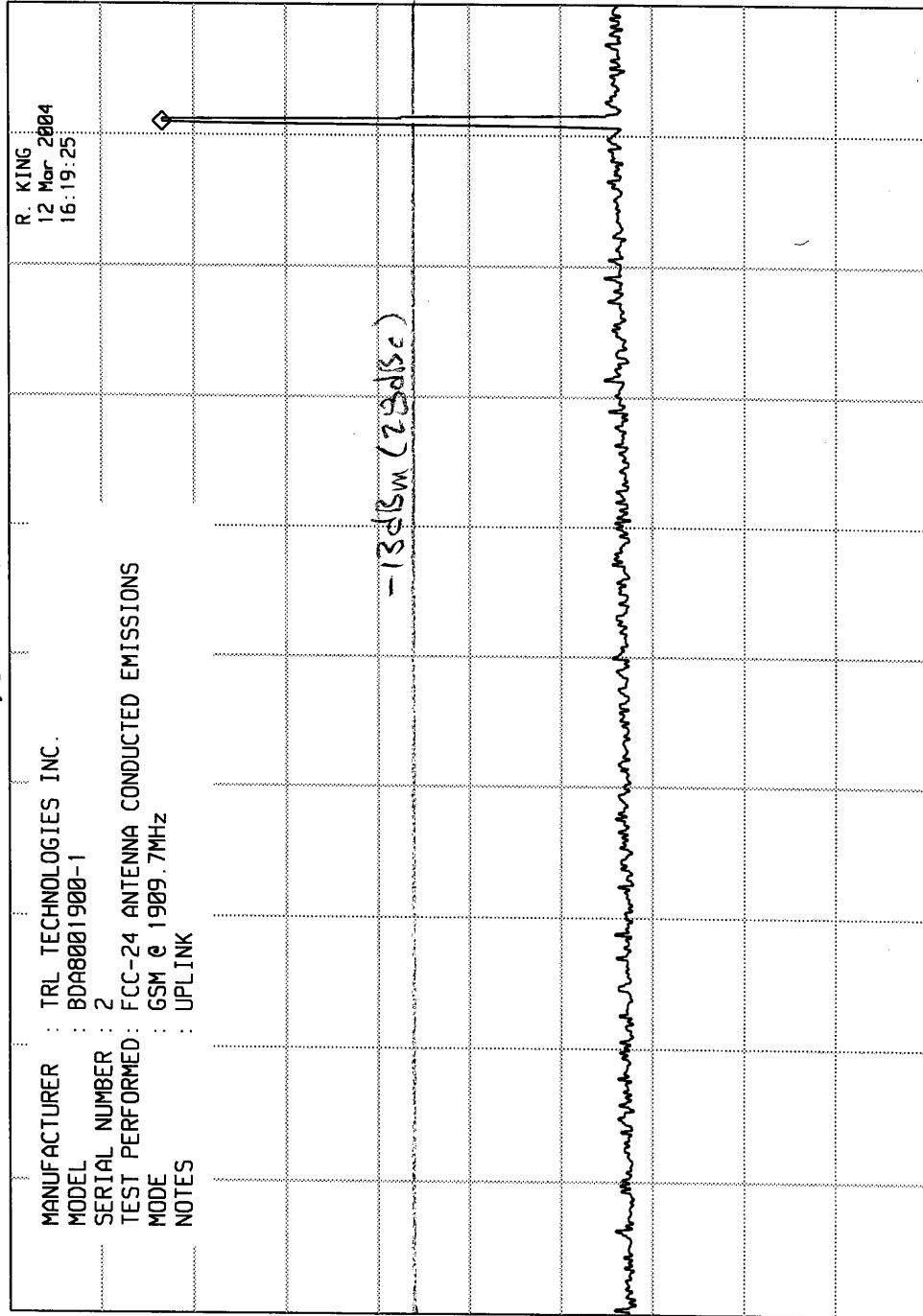
ATTEN 10 dB + 40dBEXT

REF -10.0 dBm

hp

10 dB/

OFFSET  
-10.0  
dB



STOP 2.00 GHz  
SWP 25.0 msec

UBW 3 MHz

RES BW 1 MHz(i)

START 1.00 GHz

ELITE ELECTRONIC ENGINEERING INC.

MKR 3.12 GHz  
-70.50 dBm

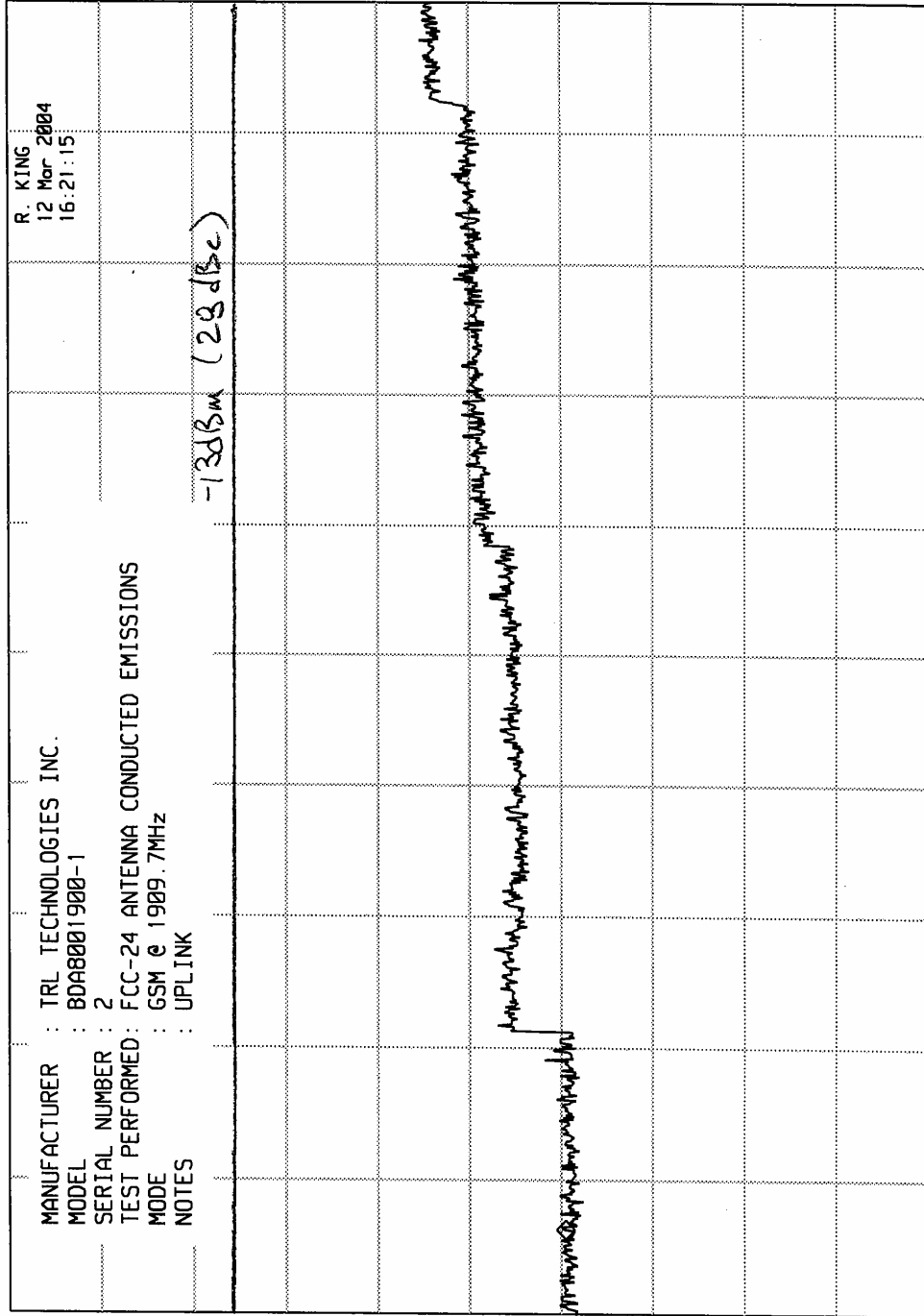
ATTEN 10 dB +20dB (2x)

REF -10.0 dBm

hp

10 dB/

OFFSET  
-10.0  
dB



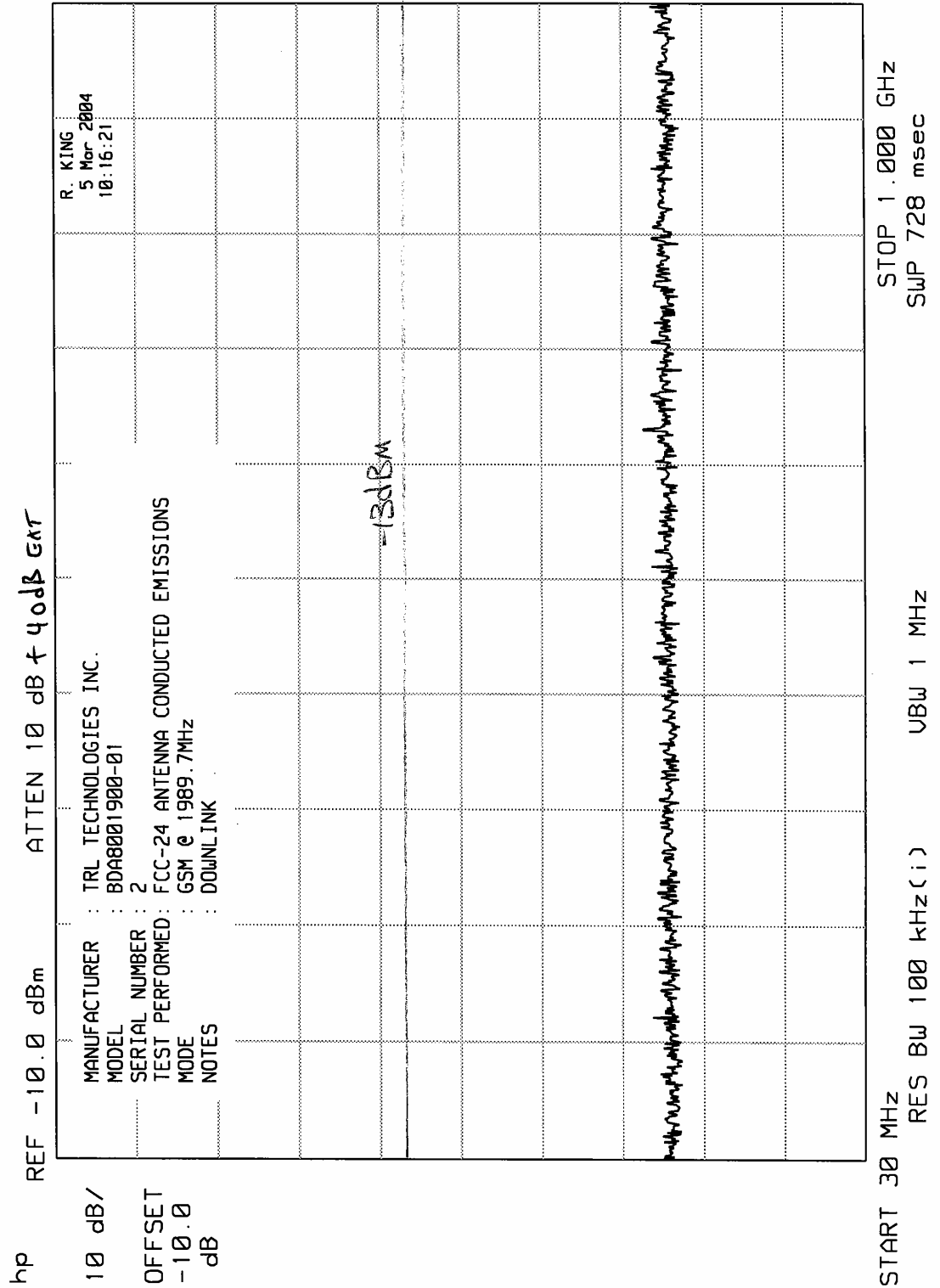
STOP 20.0 GHz  
SWP 450 msec

UBW 3 MHz

RES BW 1 MHz (i)

START 2.0 GHz

ELITE ELECTRONIC ENGINEERING Inc.



ELITE ELECTRONIC ENGINEERING Inc.

MKR 1.989 GHz  
-29.70 dBm

hp

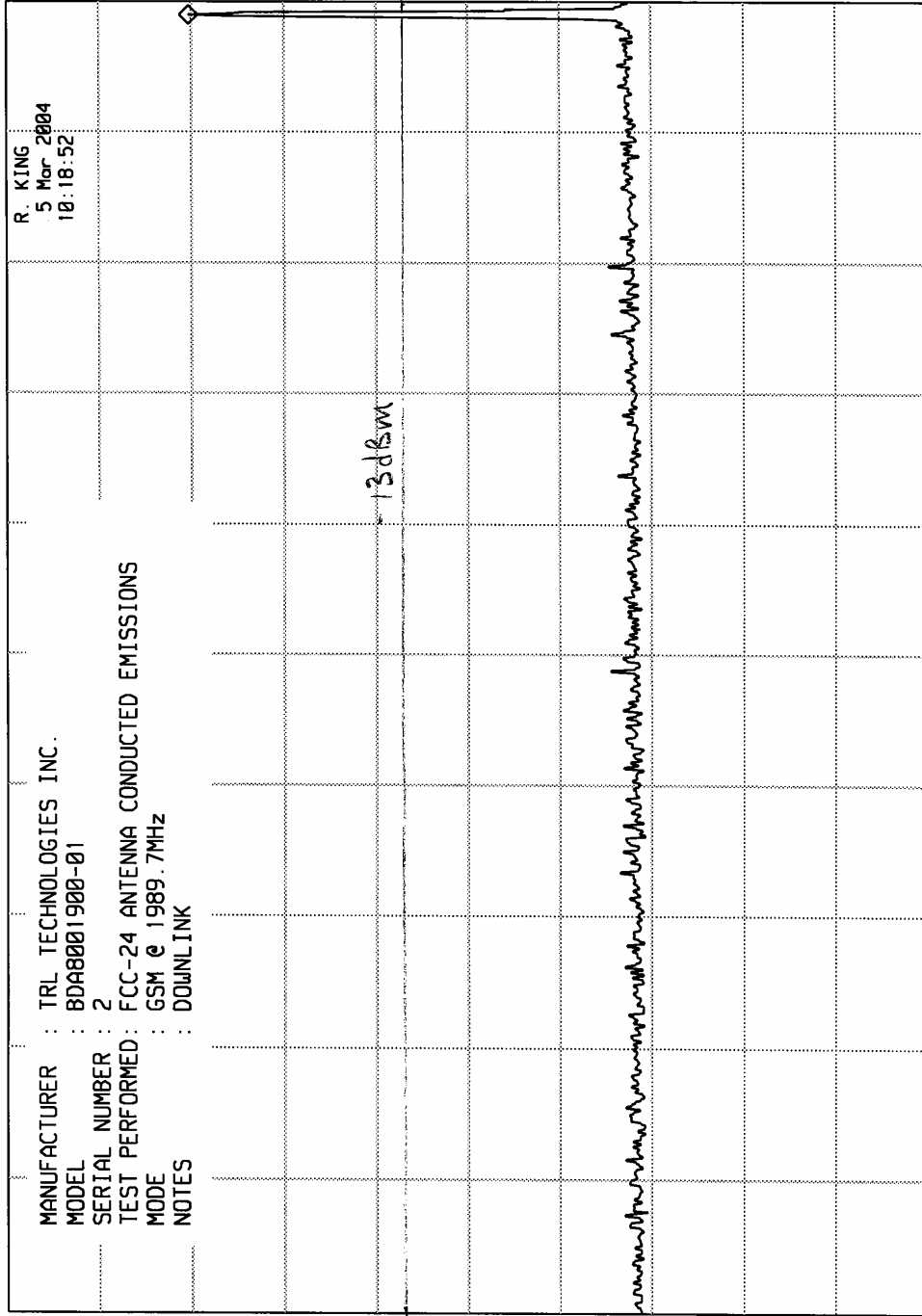
10 dB/

OFFSET  
-10.0  
dB

ATTEN 10 dB +40dB ext

REF -10.0 dBm

MANUFACTURER : TRL TECHNOLOGIES INC.  
MODEL : BDA8001900-01  
SERIAL NUMBER : 2  
TEST PERFORMED: FCC-24 ANTENNA CONDUCTED EMISSIONS  
MODE : GSM @ 1989.7MHz  
NOTES : DOWNLINK



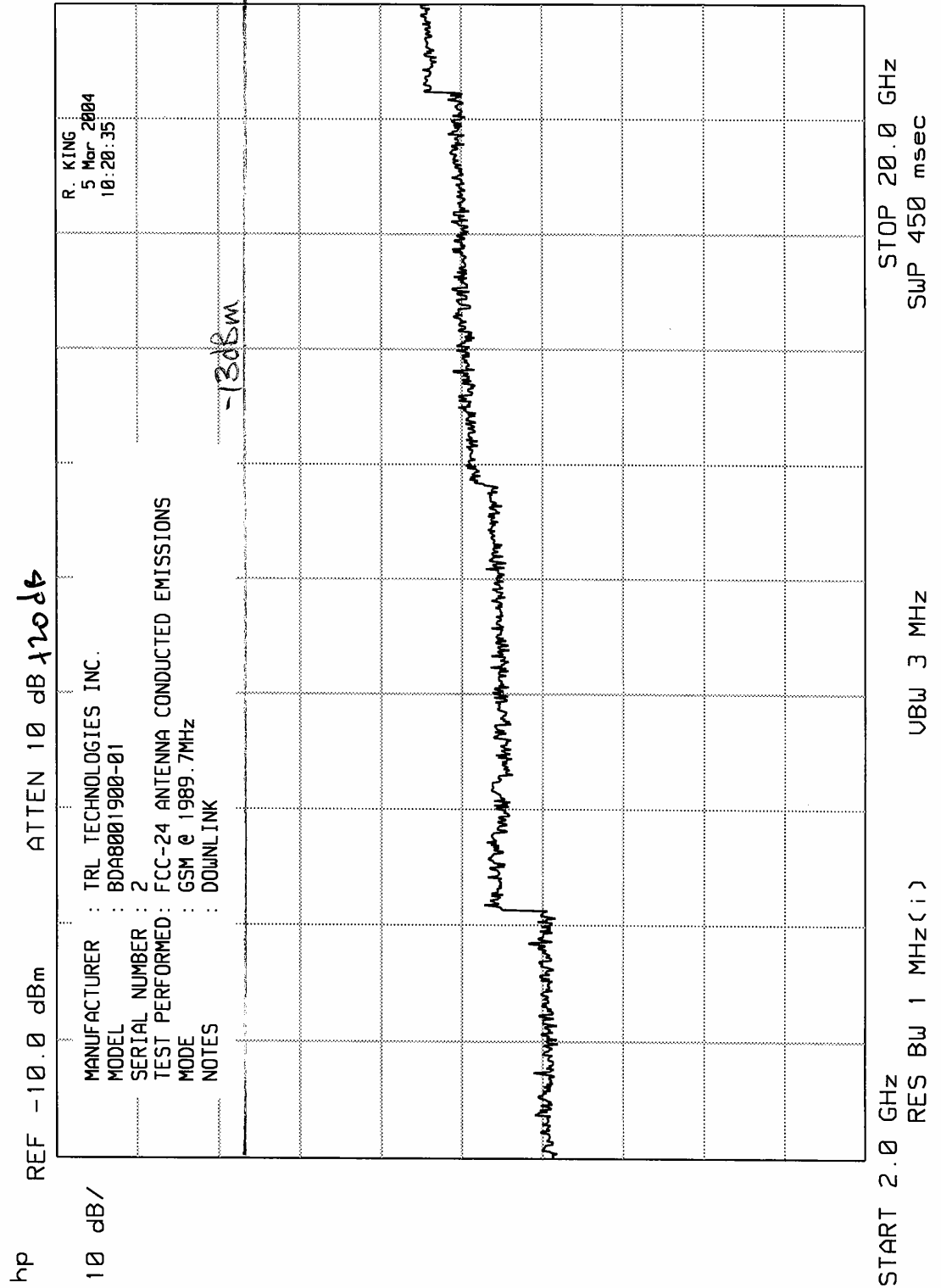
STOP 2.00 GHz  
SWP 25.0 msec

UBW 3 MHz

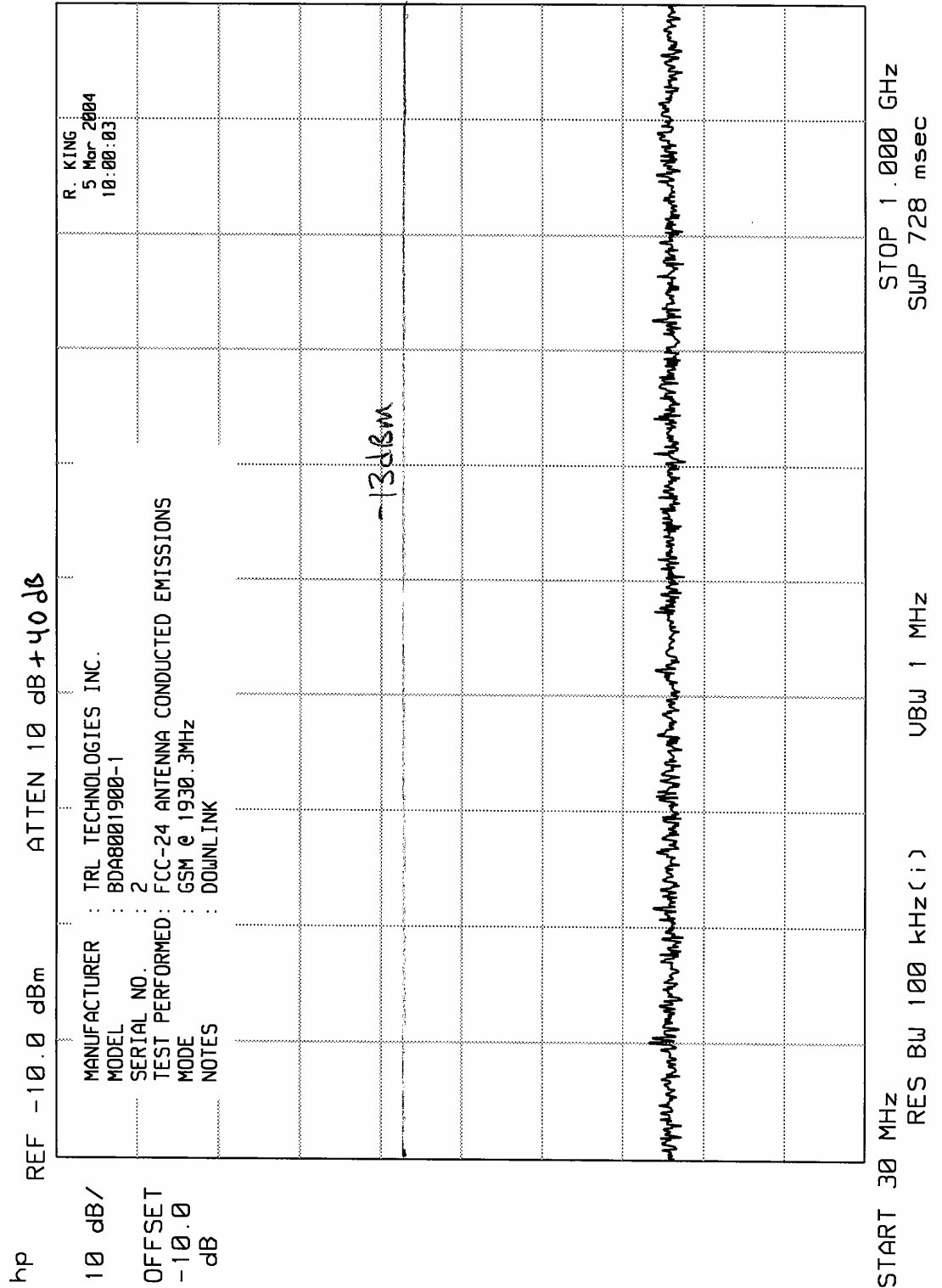
RES BW 1 MHz(i)

START 1.00 GHz

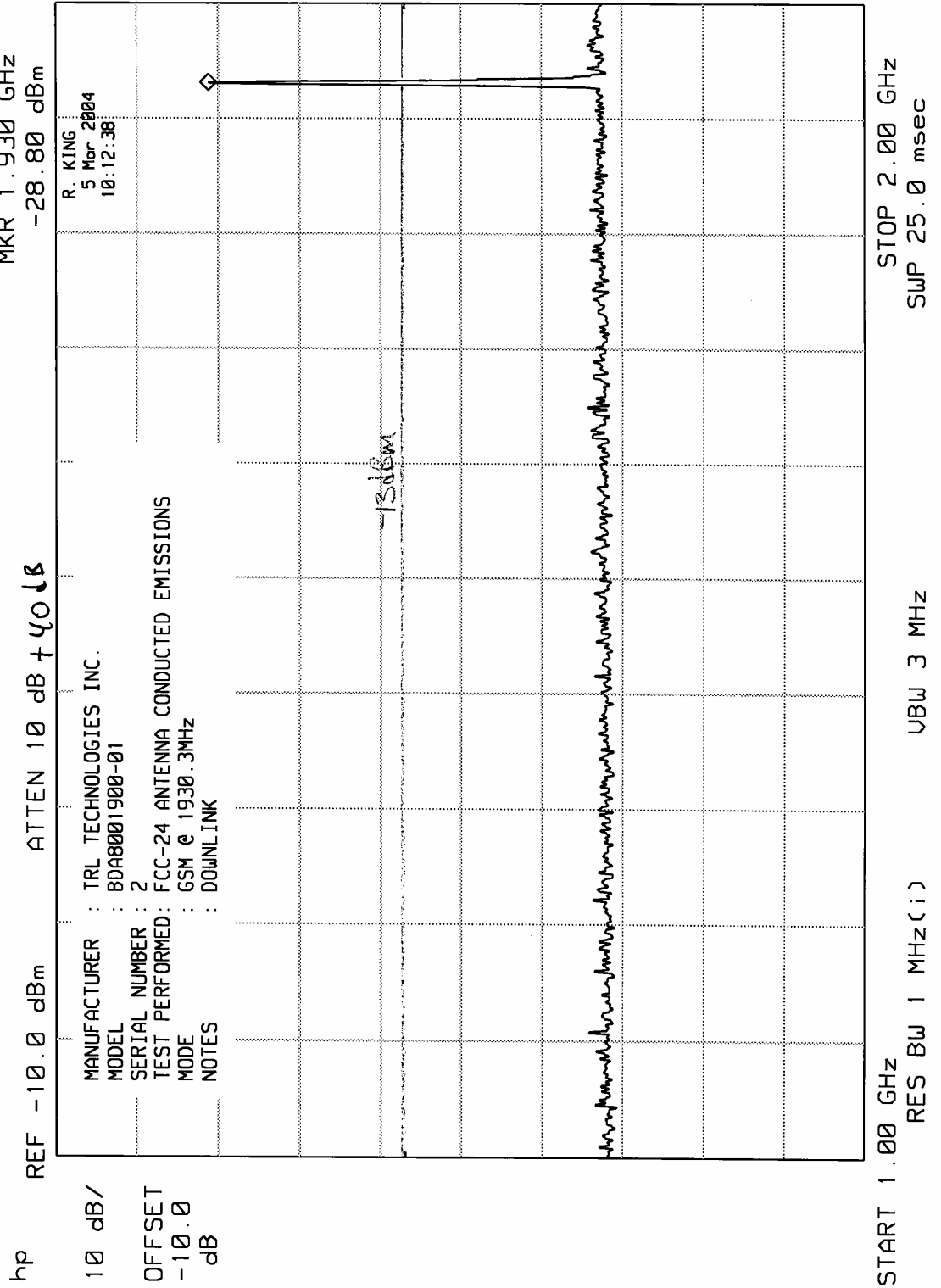
ELITE ELECTRONIC ENGINEERING Inc.



ELITE ELECTRONIC ENGINEERING Inc.

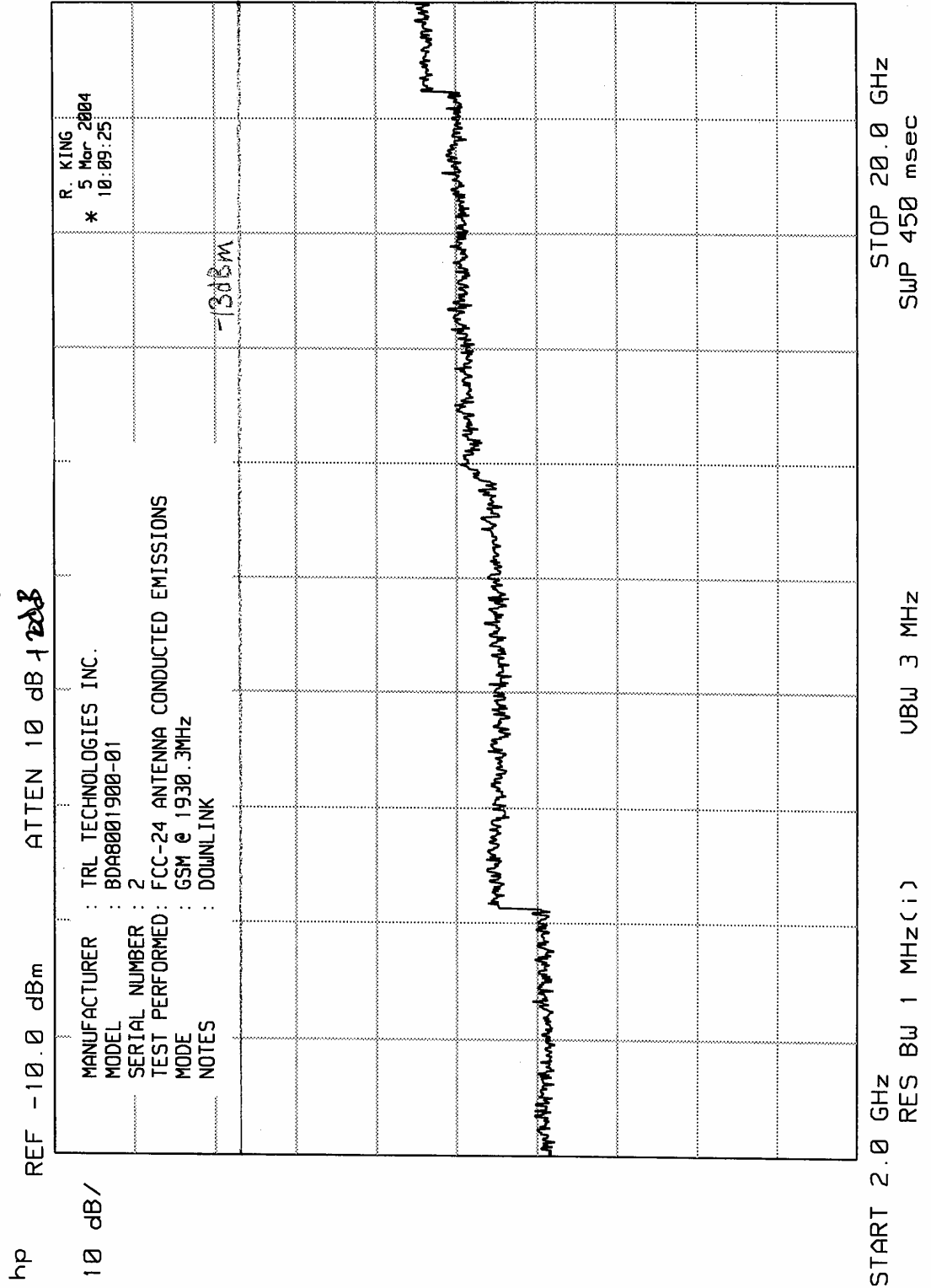


ELITE ELECTRONIC ENGINEERING Inc.



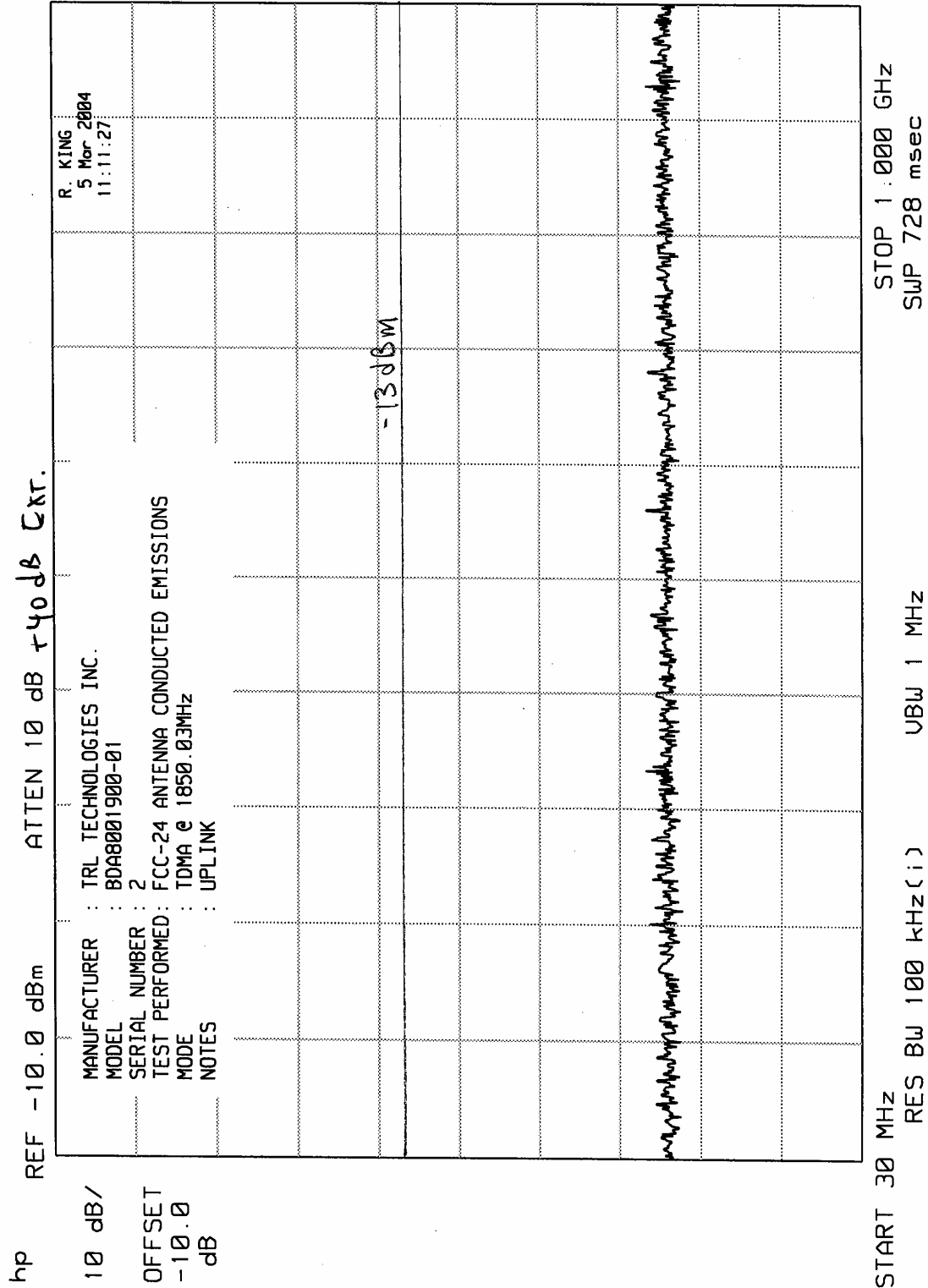


ELITE ELECTRONIC ENGINEERING Inc.





ELITE ELECTRONIC ENGINEERING INC.



ELITE ELECTRONIC ENGINEERING Inc.

MKR 1.849 GHz  
-29.80 dBm

ATTEN 10 dB +40dB

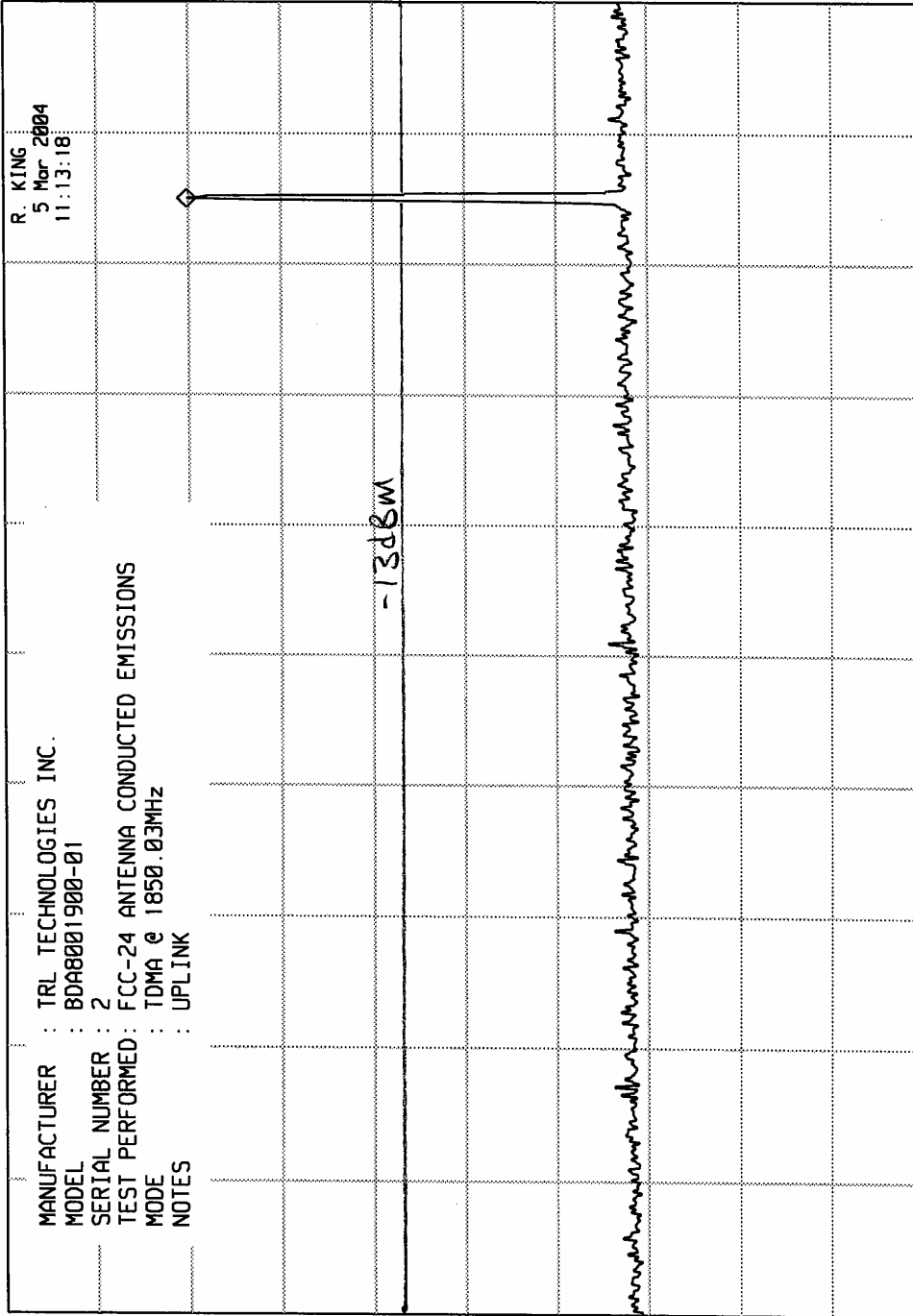
REF -10.0 dBm

hp

10 dB/

OFFSET  
-10.0  
dB

MANUFACTURER : TRL TECHNOLOGIES INC.  
MODEL : BDA8001900-01  
SERIAL NUMBER : 2  
TEST PERFORMED : FCC-24 ANTENNA CONDUCTED EMISSIONS  
MODE : TDMA @ 1850.03MHz  
NOTES : UPLINK



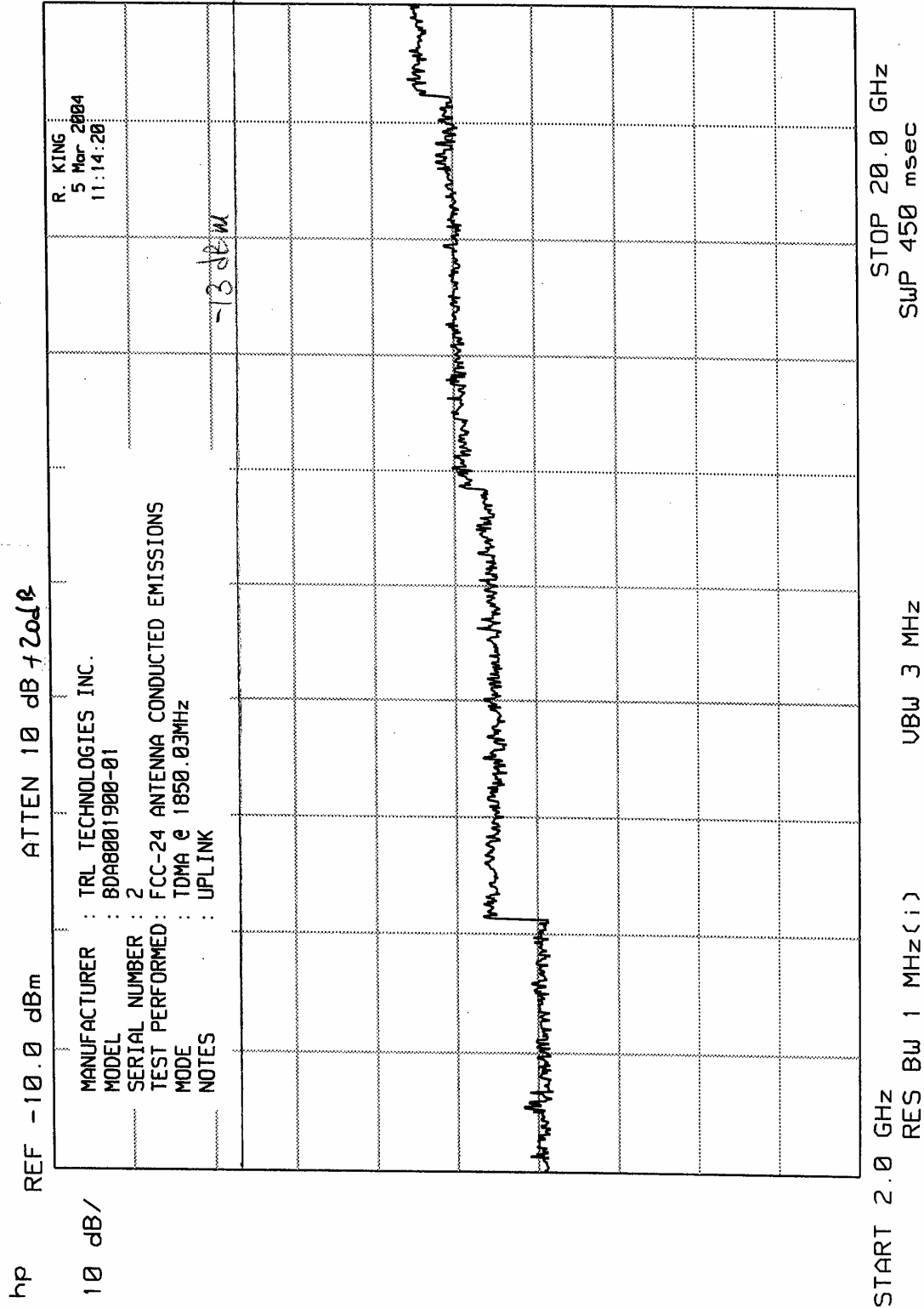
STOP 2.00 GHz  
SWP 25.0 msec

UBW 3 MHz

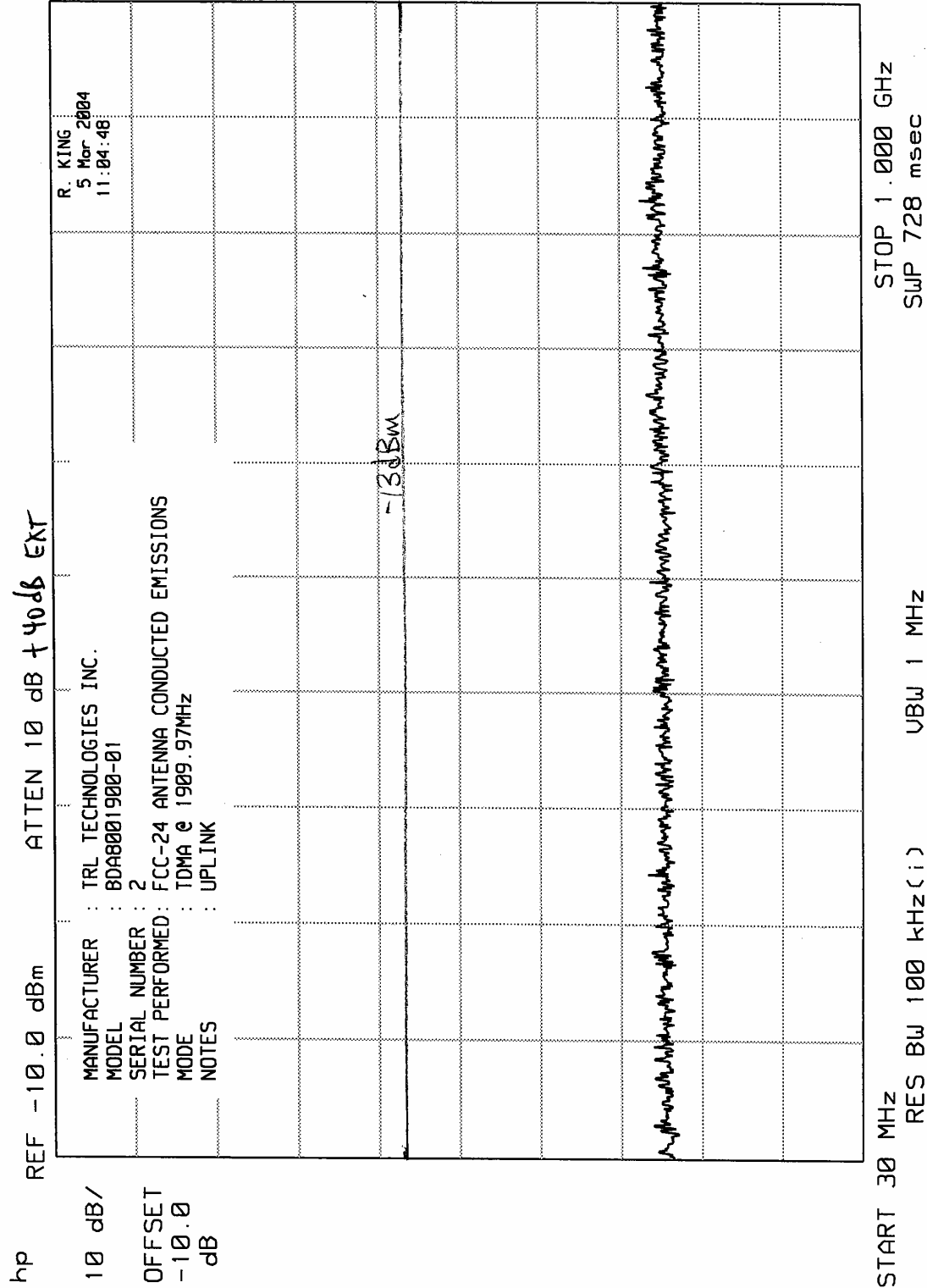
RES BW 1 MHz (i)

START 1.00 GHz

ELITE ELECTRONIC ENGINEERING INC.



ELITE ELECTRONIC ENGINEERING Inc.



ELITE ELECTRONIC ENGINEERING Inc.

MRK 1.909 GHz  
-34.30 dBm

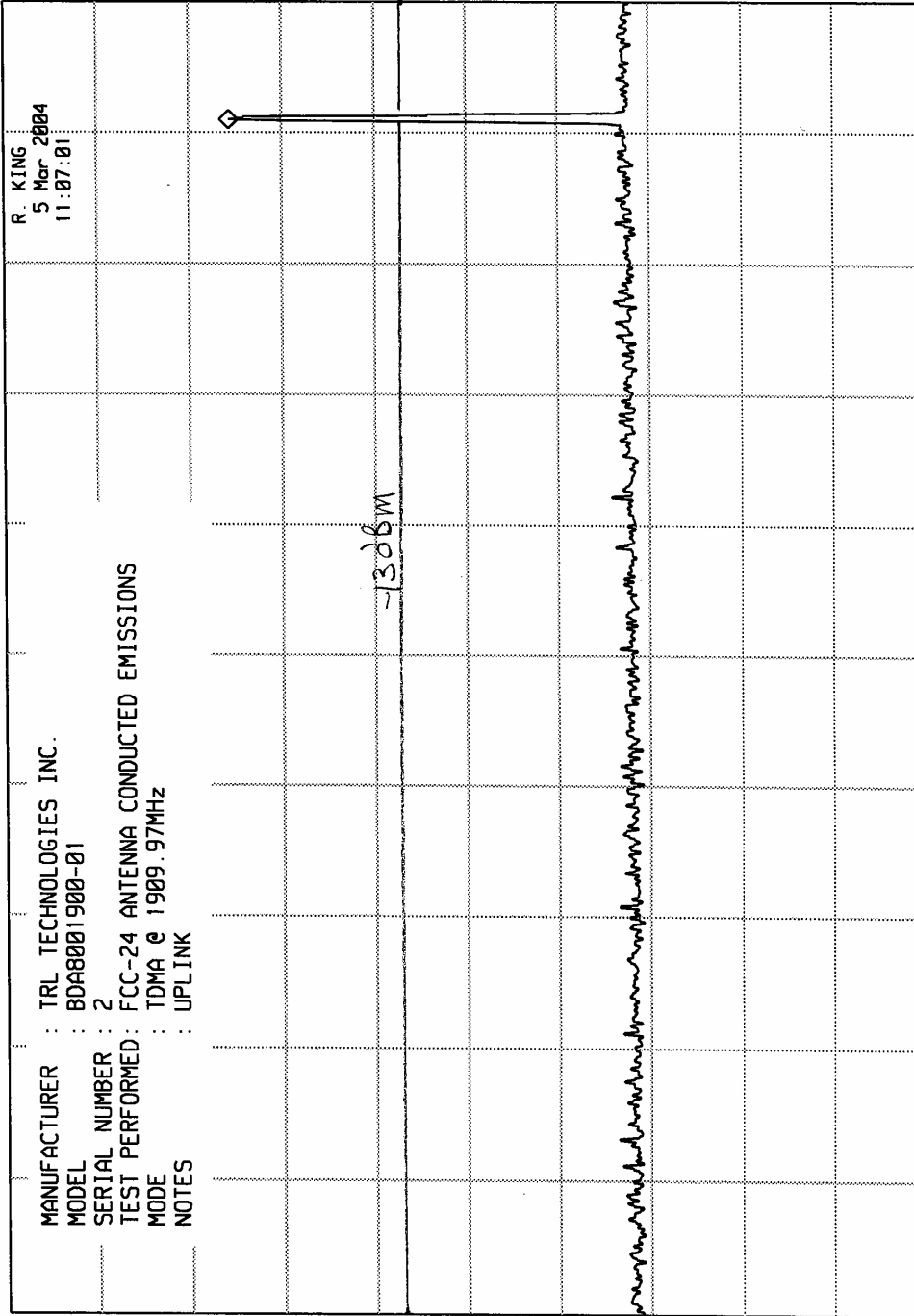
hp

REF -10.0 dBm

ATTEN 10 dB + 40 EXT.

10 dB/

OFFSET  
-10.0  
dB



START 1.00 GHz

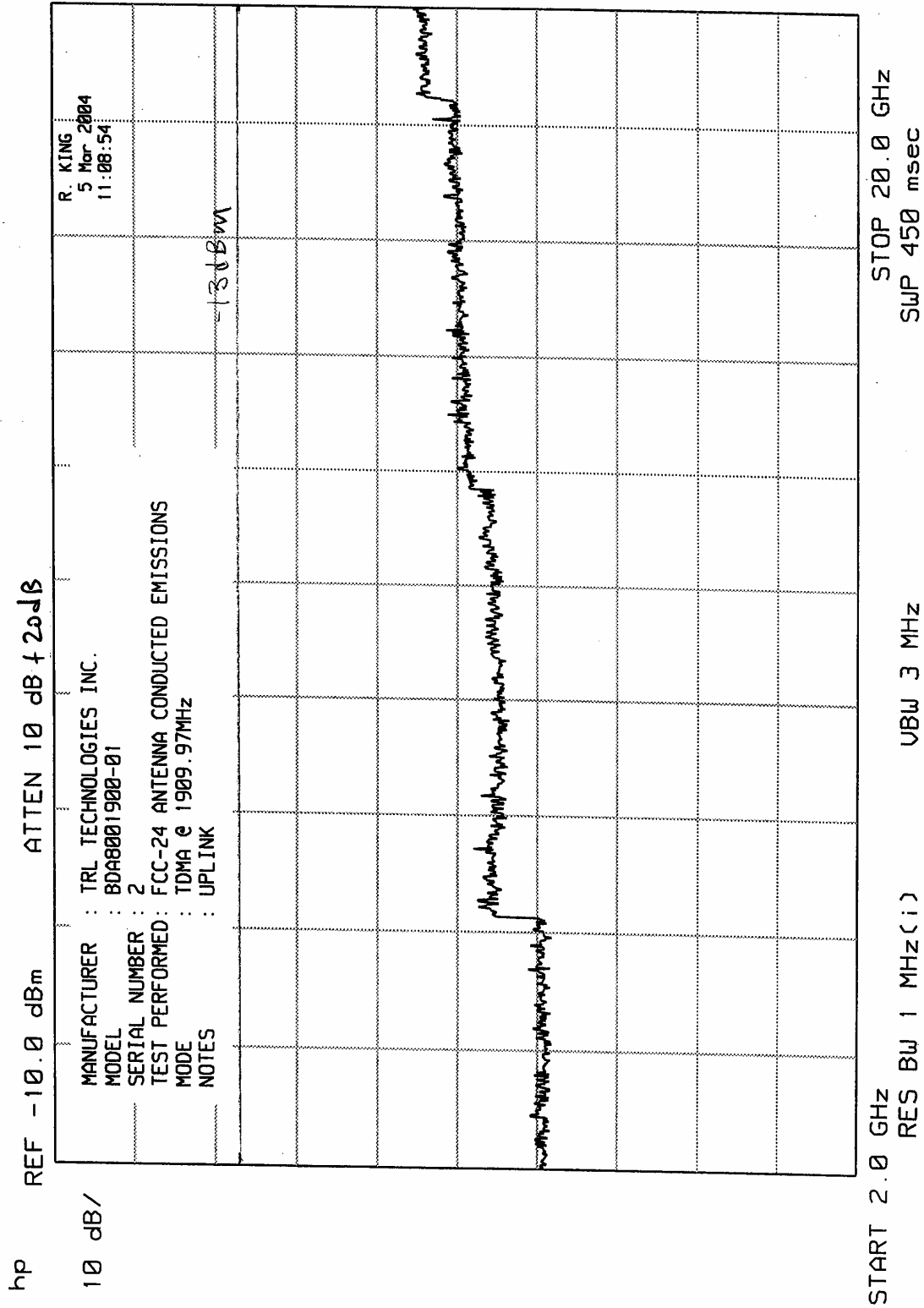
RES BW 1 MHz (i)

VBW 3 MHz

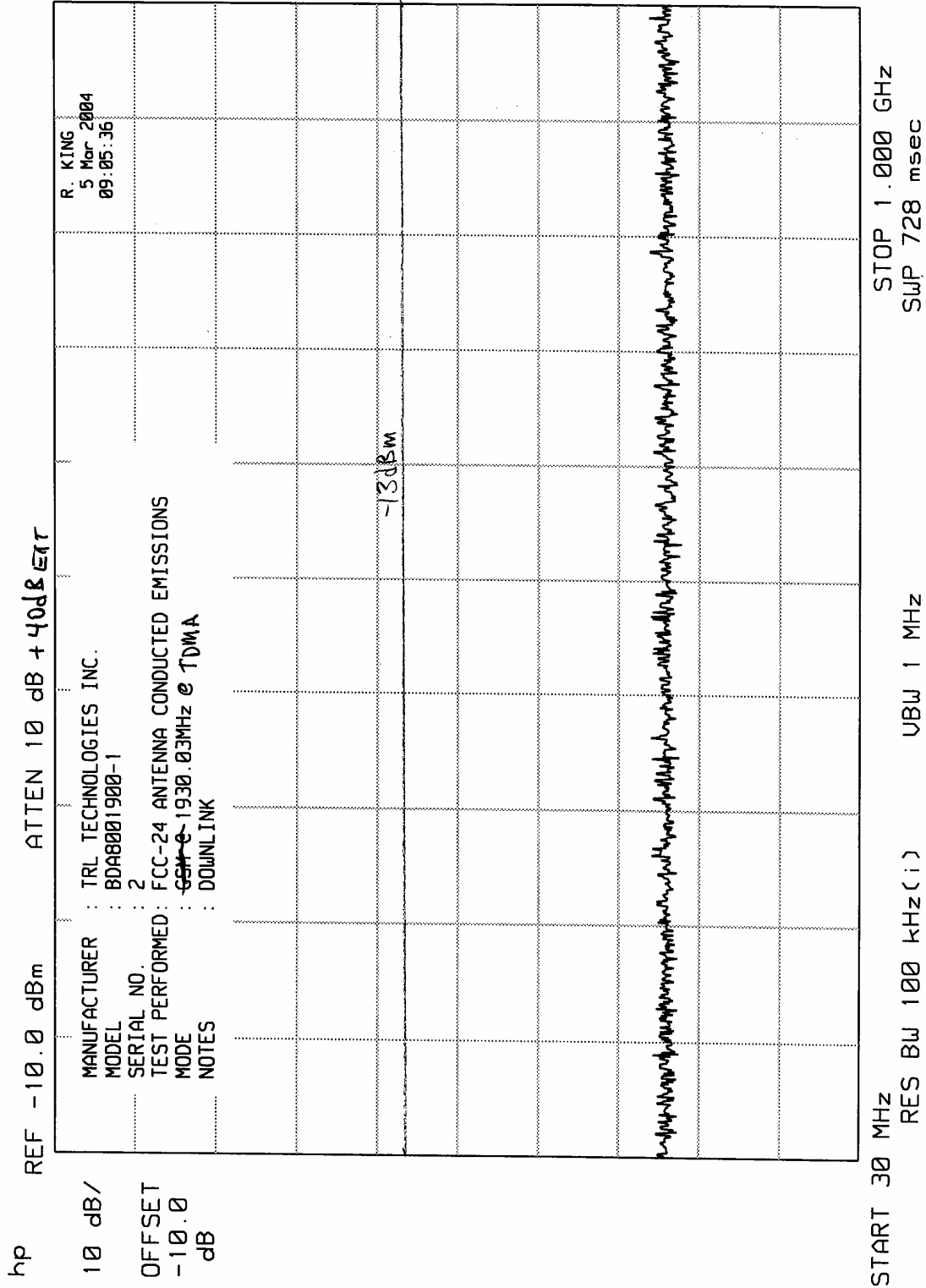
STOP 2.00 GHz

SWP 25.0 msec

ELITE ELECTRONIC ENGINEERING INC.

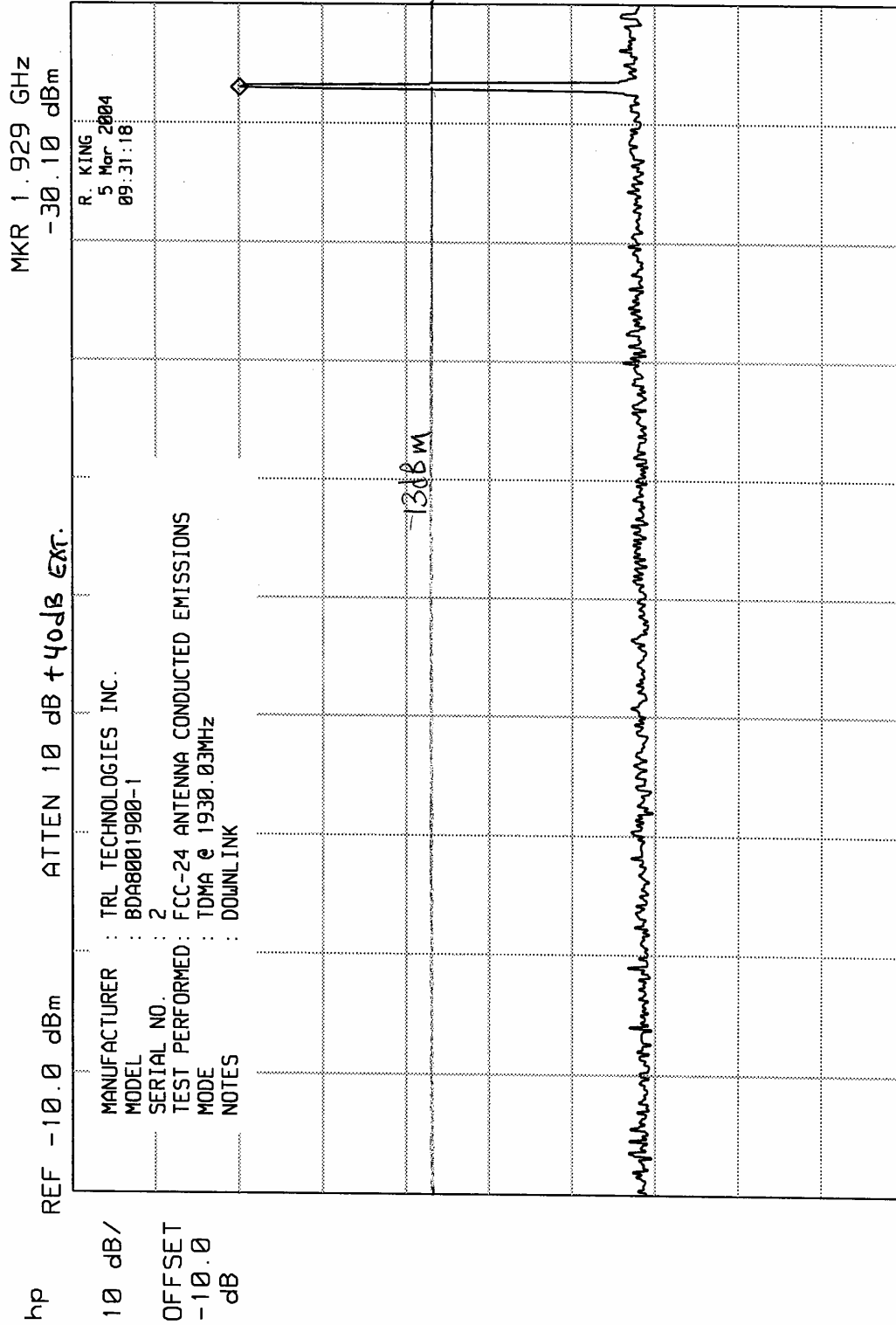


ELITE ELECTRONIC ENGINEERING Inc.

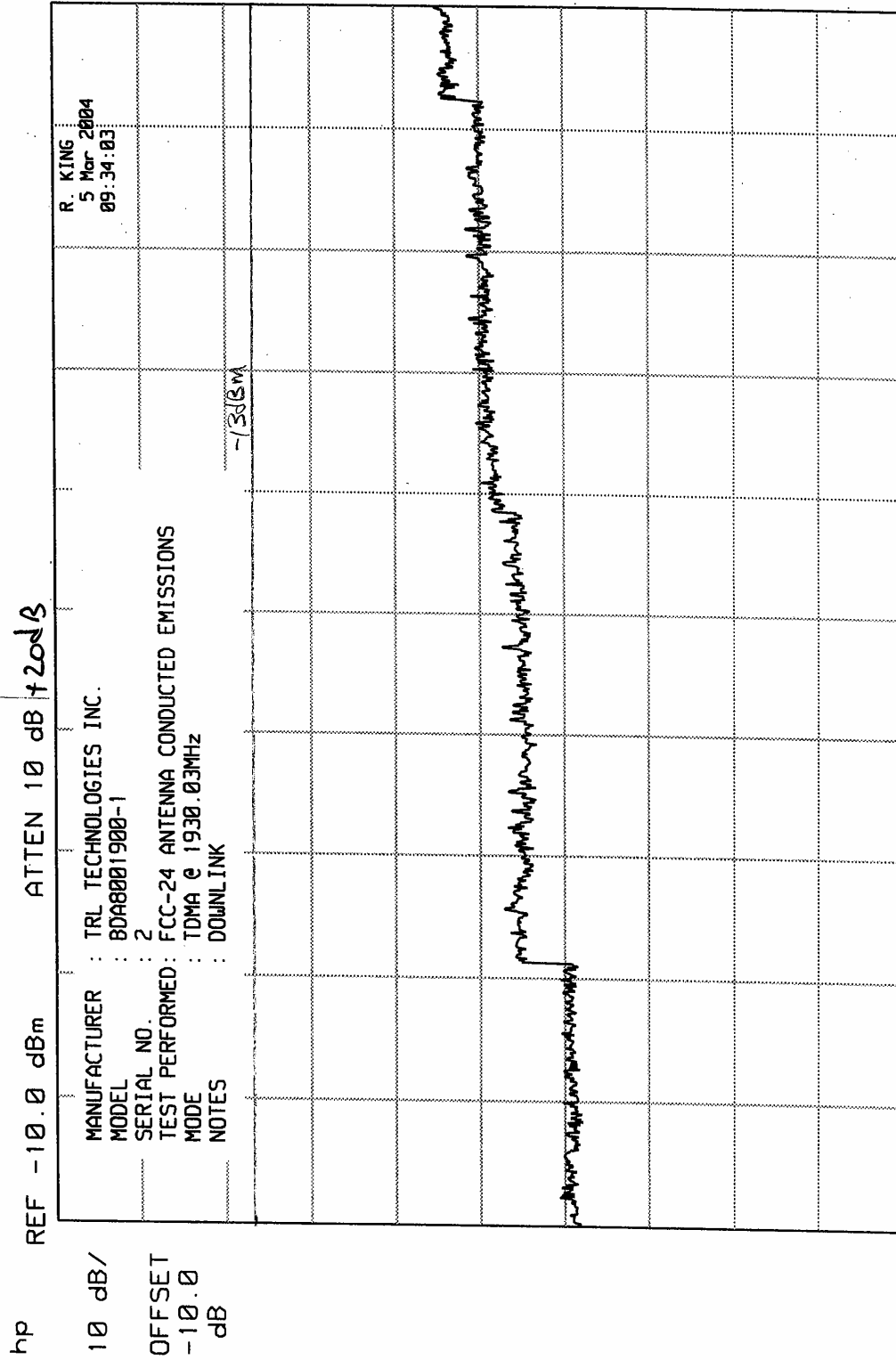




ELITE ELECTRONIC ENGINEERING Inc.



ELITE ELECTRONIC ENGINEERING INC.



START 2.0 GHz RES BW 1 MHz(i) STOP 20.0 GHz

UBW 3 MHz SWP 450 msec



ELITE ELECTRONIC ENGINEERING Inc.

MR 1.989 982 GHz  
-31.80 dBm

ATTEN 10 dB + 40dB ext

REF -10.0 dBm

hp  
10 dB/  
OFFSET  
-10.0  
dB

MANUFACTURER	: TRL TECHNOLOGIES INC.
MODEL	: BDA8001900-1
SERIAL NO.	: 2
TEST PERFORMED	: FCC-24 ANTENNA CONDUCTED EMISSIONS
MODE	: TDMA @ 1989.97MHz
NOTES	: DOWNLINK

-13dBm

R. KING  
5 Mar 2004  
09:38:19

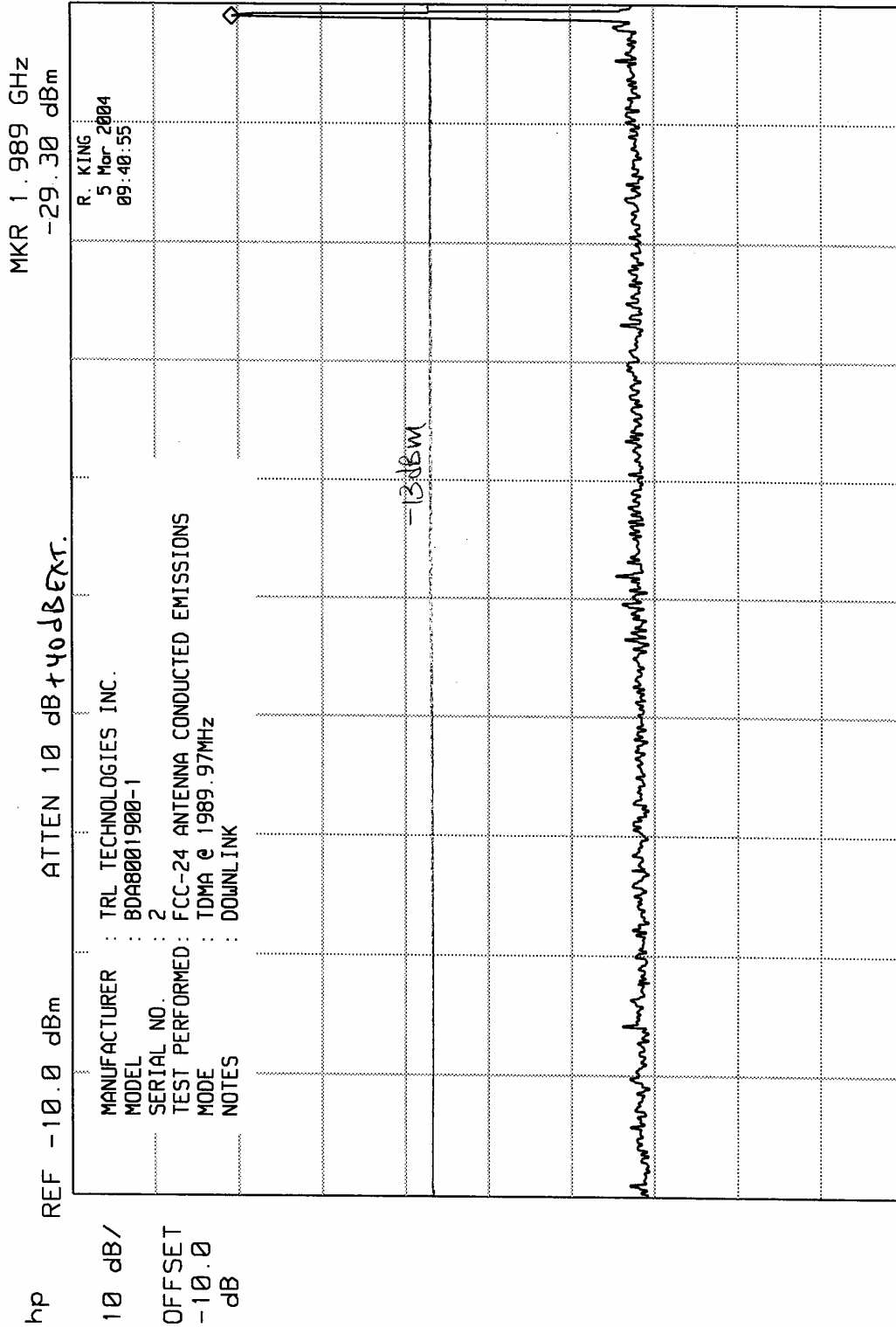
www.microwave.com

```

START 30 MHz
RES BW 100 kHz(i)
UBW 1 MHz
STOP 1.000 GHz
SWP 728 msec

```

ELITE ELECTRONIC ENGINEERING INC.



ELITE ELECTRONIC ENGINEERING INC.

