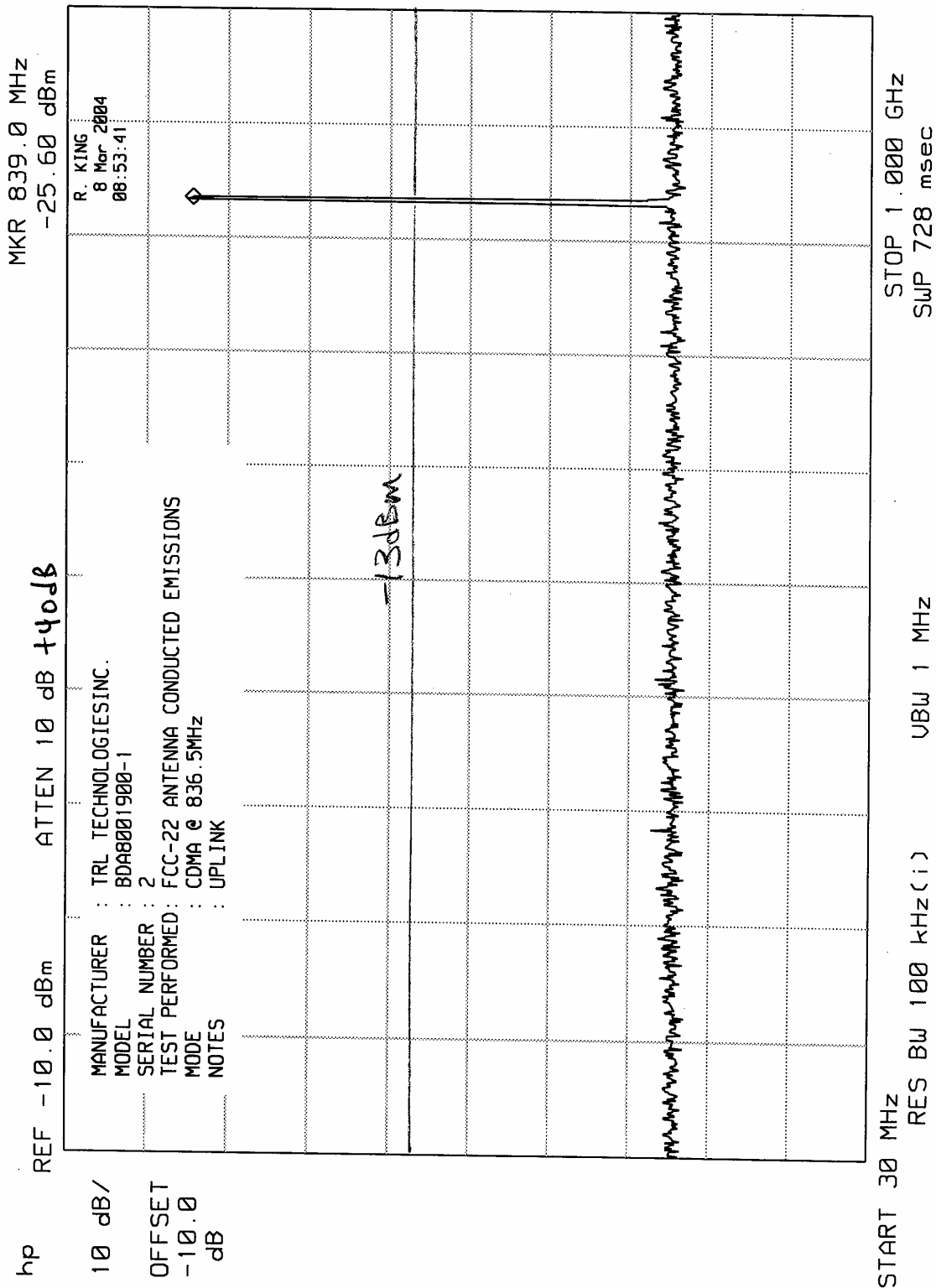
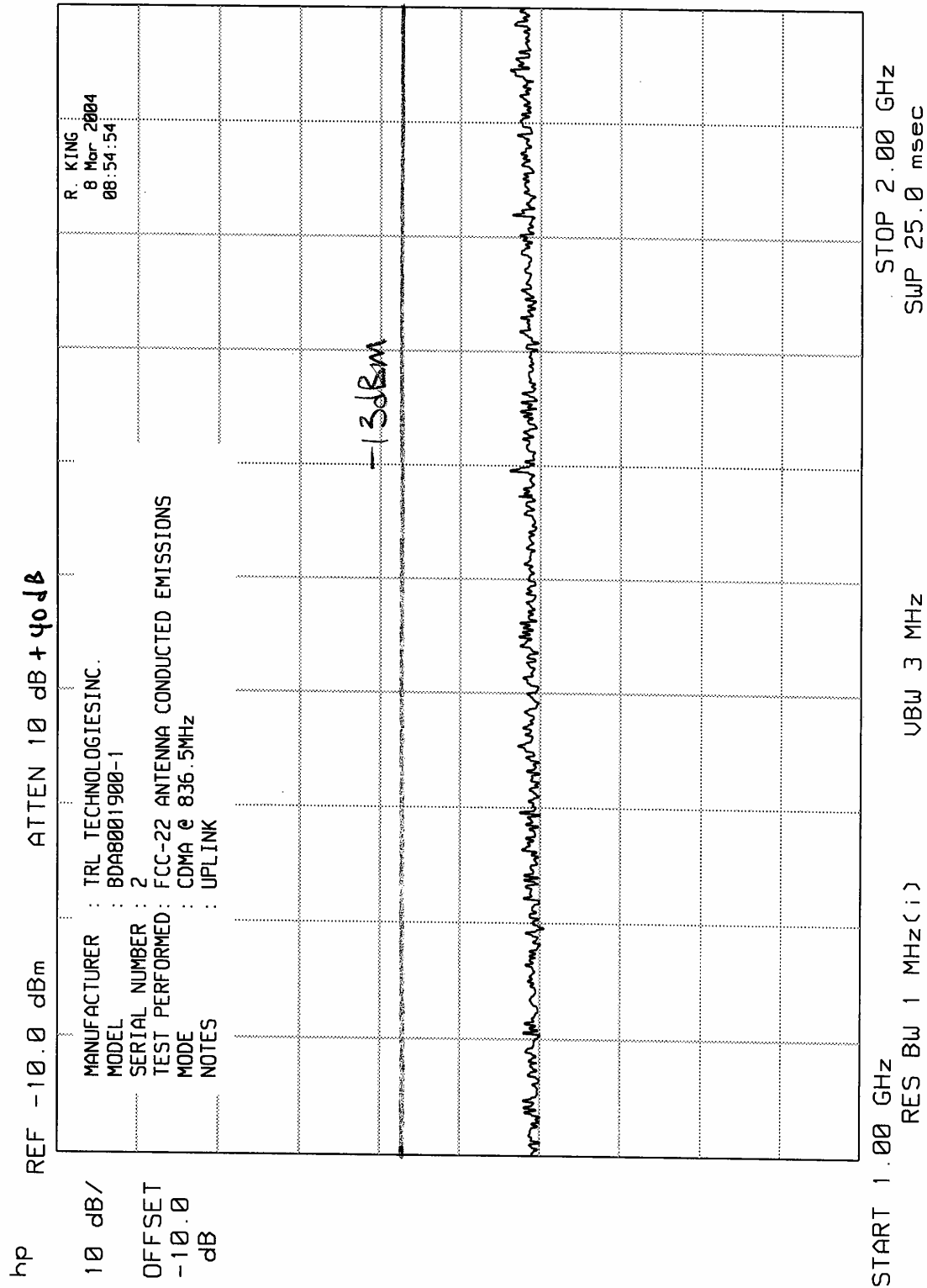


ELITE ELECTRONIC ENGINEERING INC.



ELITE ELECTRONIC ENGINEERING INC.



ELITE ELECTRONIC ENGINEERING Inc.

MKR 2.496 GHz  
-70.00 dBm

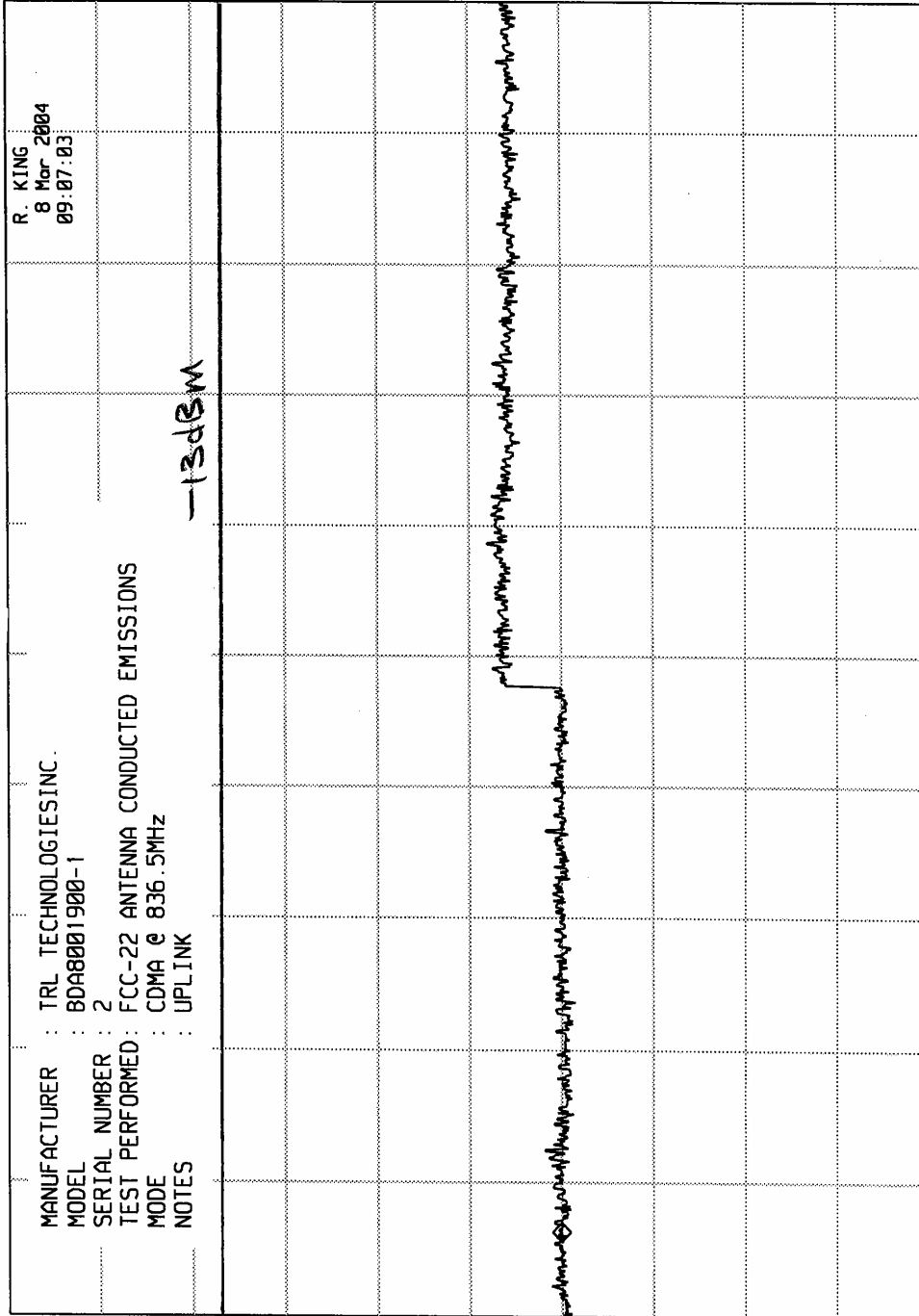
hp

REF -10.0 dBm

ATTEN 10 dB + 20dB

10 dB/

OFFSET  
-10.0  
dB



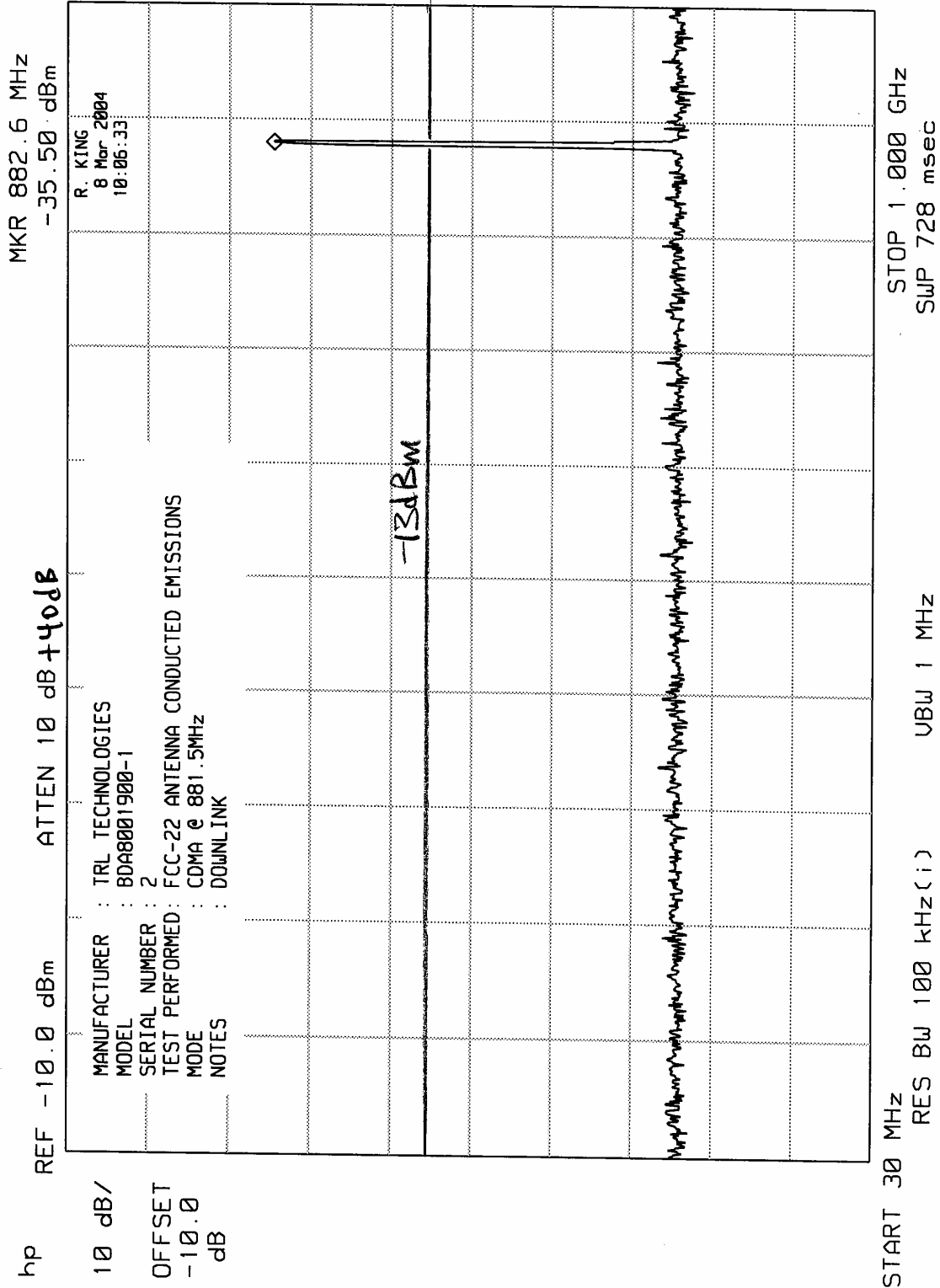
START 2.00 GHz

RES BW 1 MHz (i)

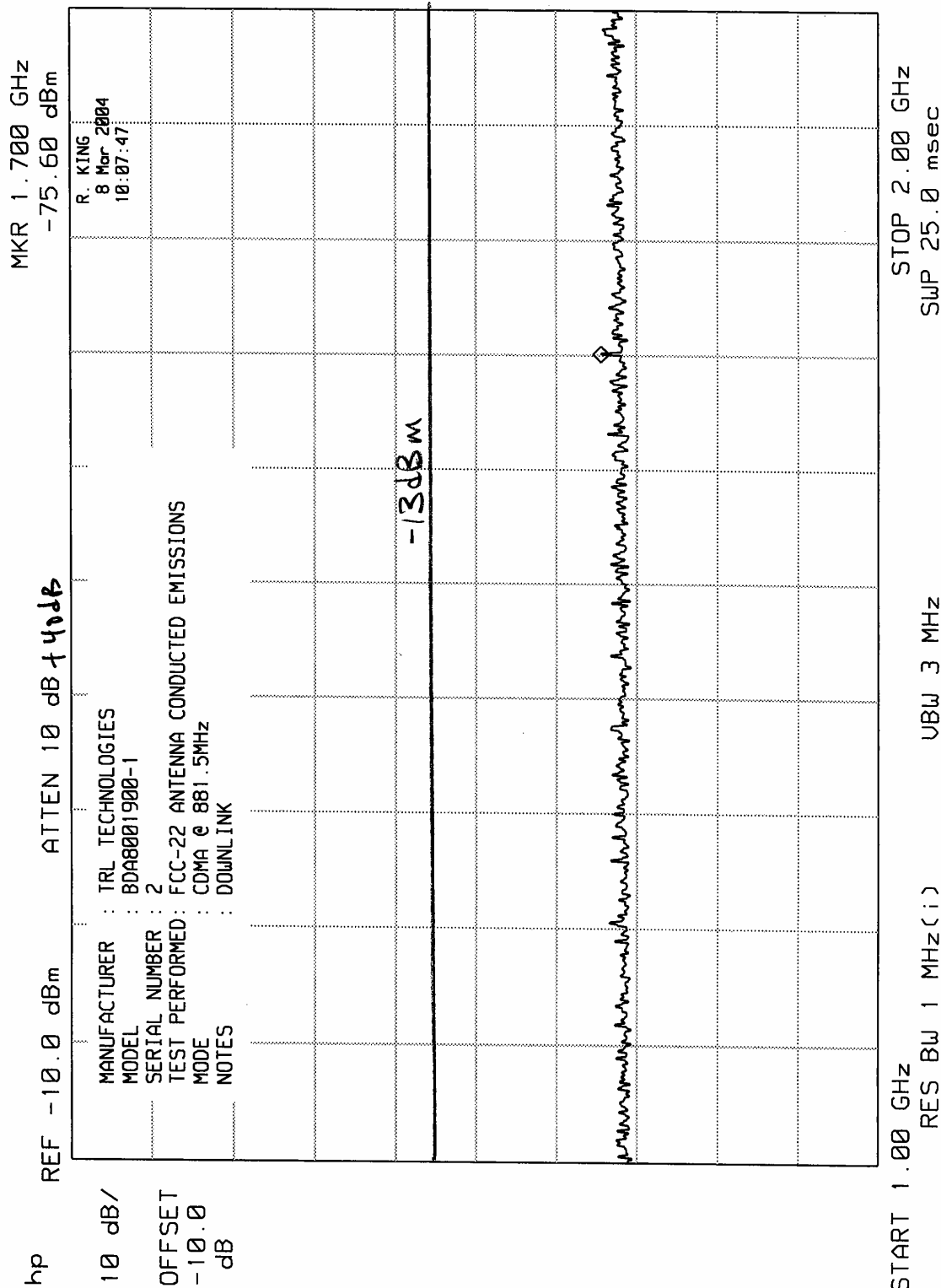
UBW 3 MHz

STOP 10.00 GHz  
SWP 200 msec

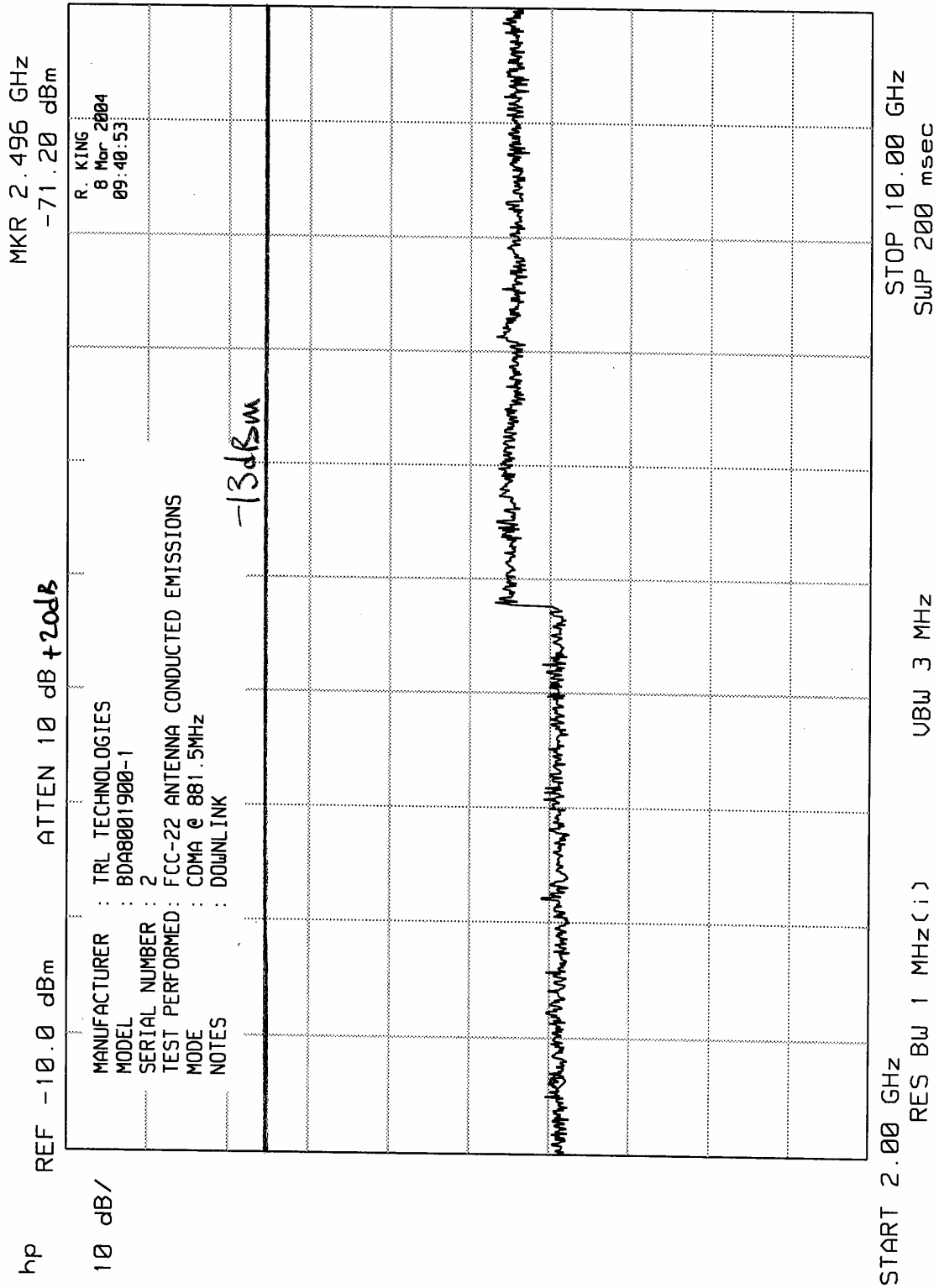
ELITE ELECTRONIC ENGINEERING Inc.



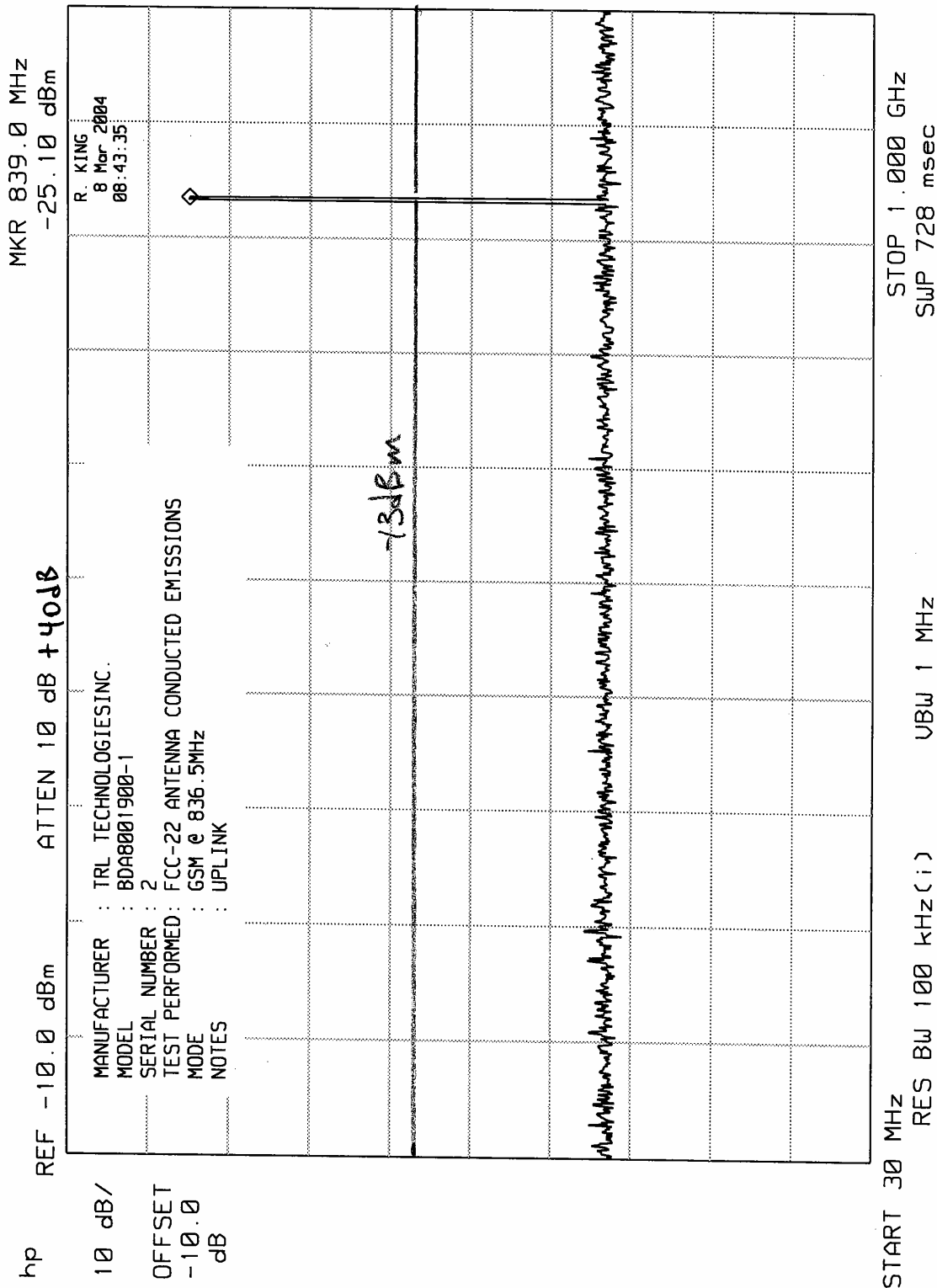
ELITE ELECTRONIC ENGINEERING Inc.



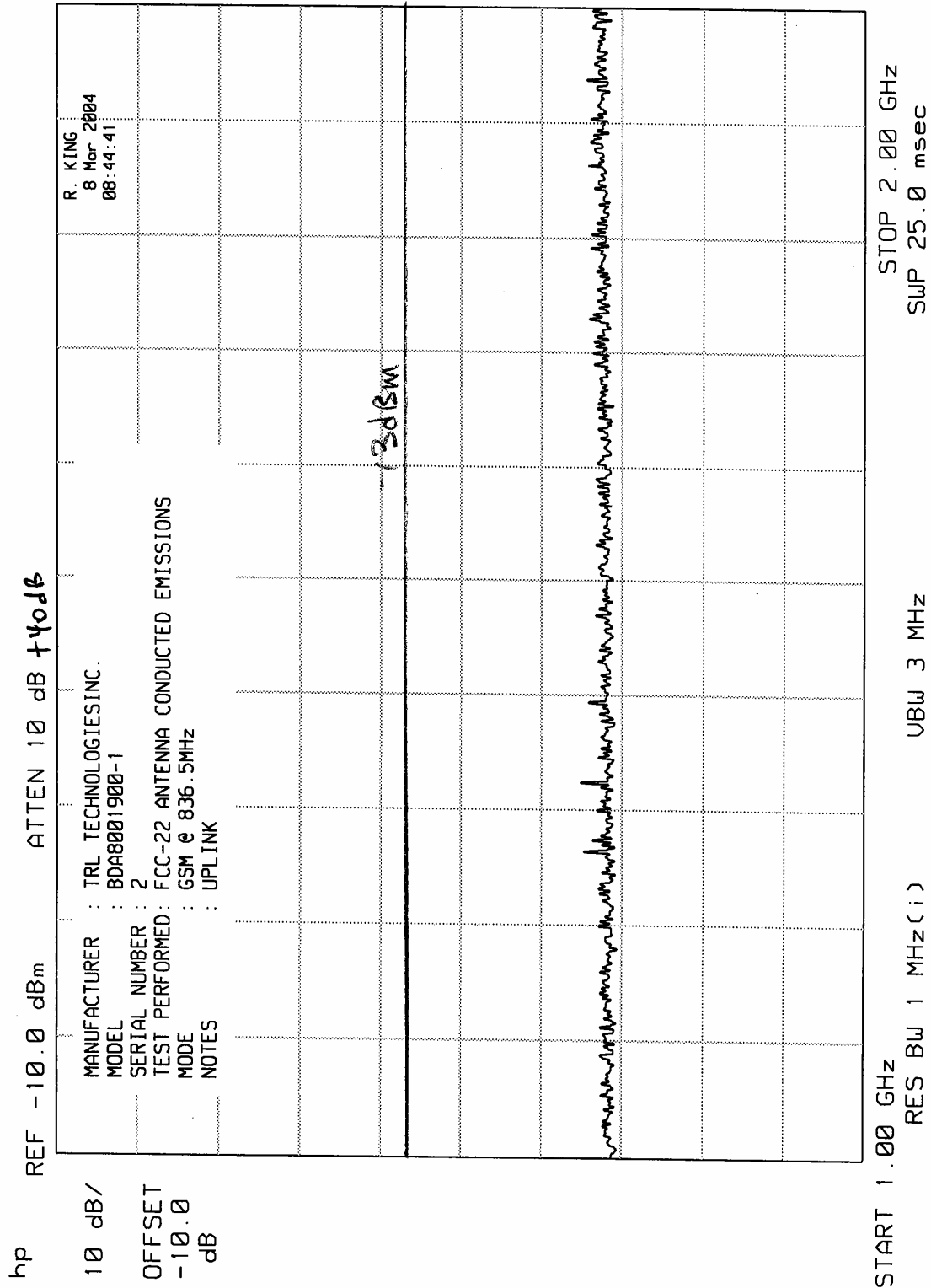
ELITE ELECTRONIC ENGINEERING Inc.



ELITE ELECTRONIC ENGINEERING INC.

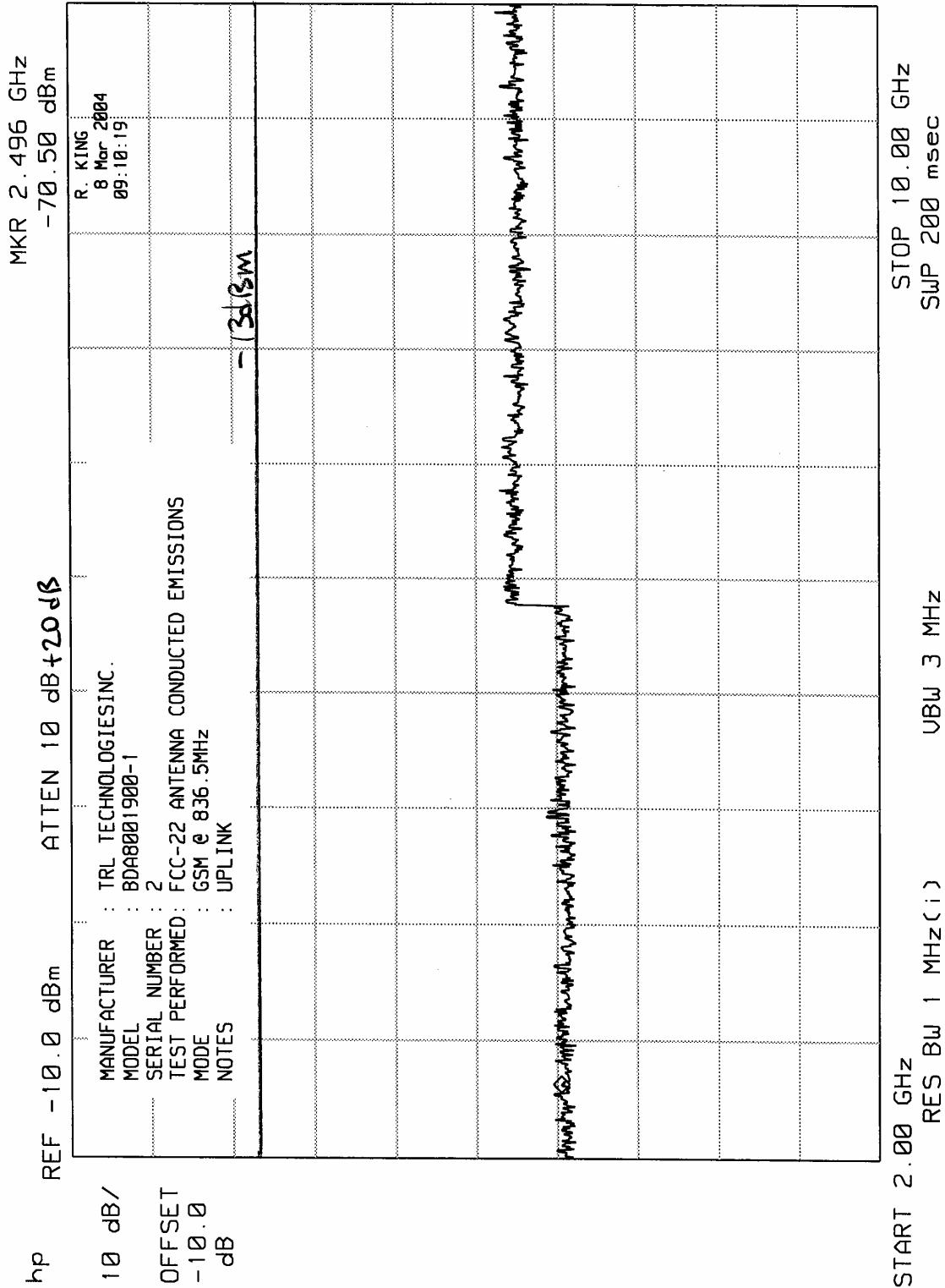


ELITE ELECTRONIC ENGINEERING INC.

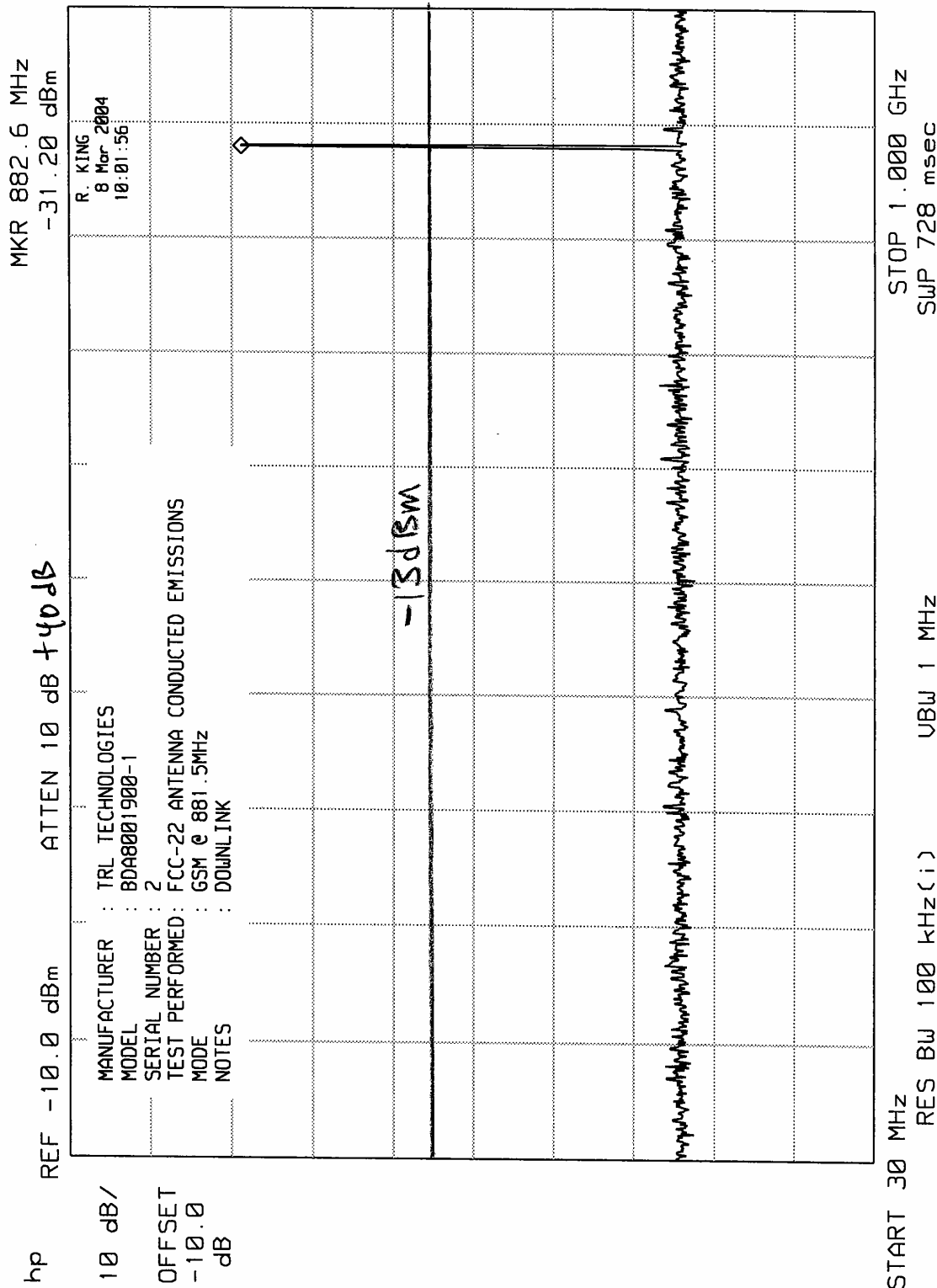




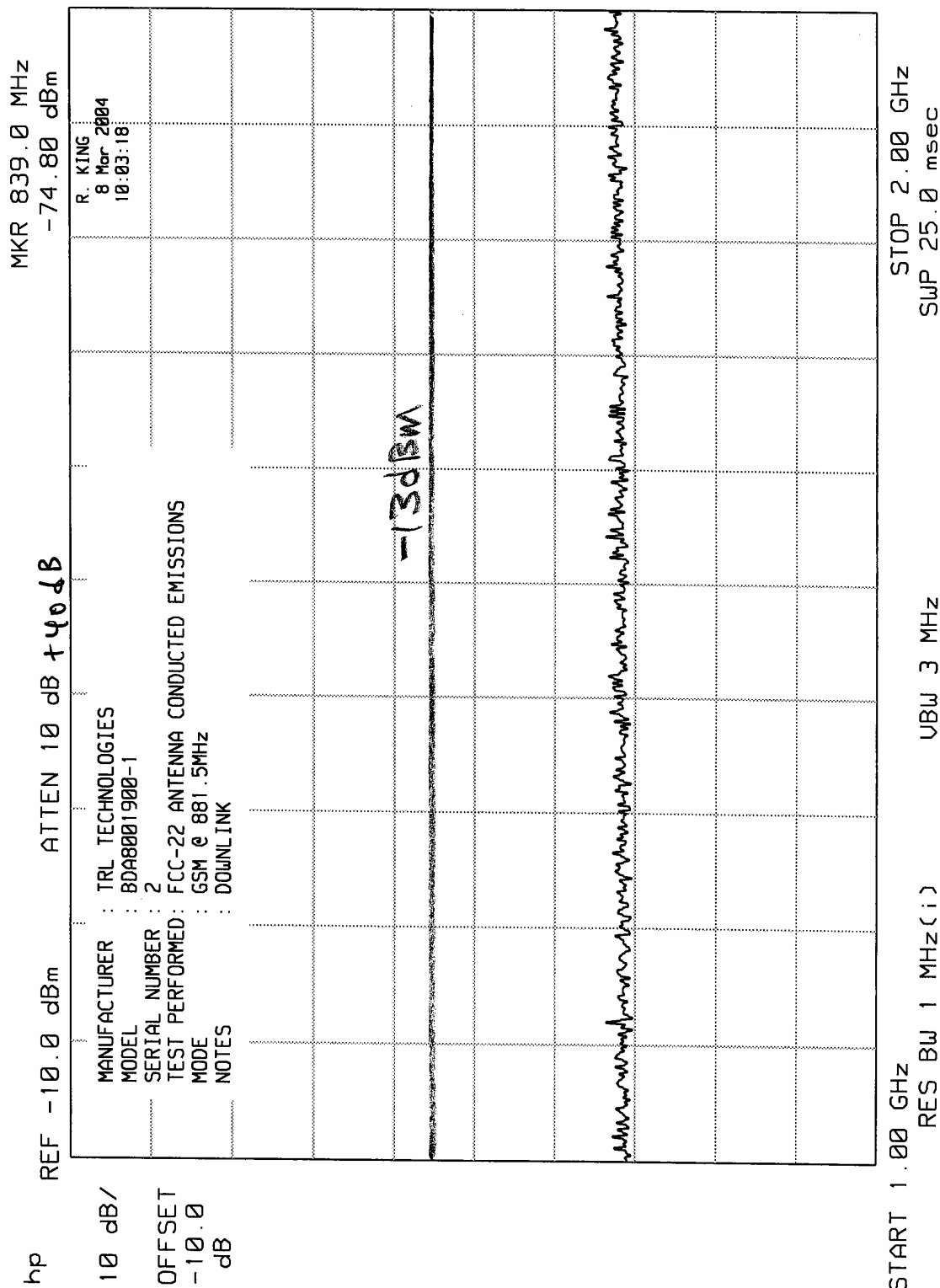
ELITE ELECTRONIC ENGINEERING Inc.



ELITE ELECTRONIC ENGINEERING Inc.



ELITE ELECTRONIC ENGINEERING Inc.



ELITE ELECTRONIC ENGINEERING Inc.

MKR 2.496 GHz  
-70.70 dBm

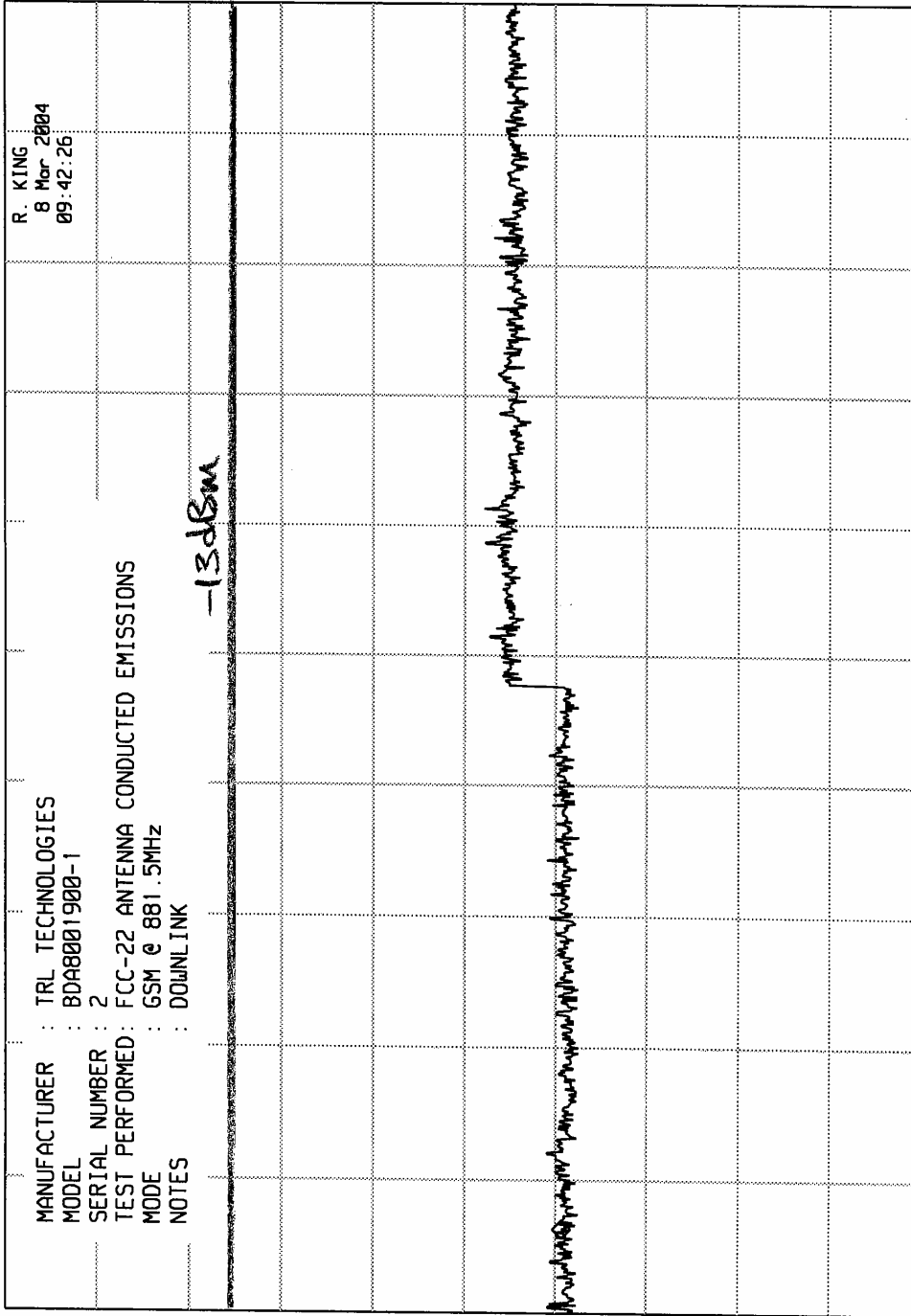
ATTEN 10 dB + 20dB

REF -10.0 dBm

hp

10 dB/

OFFSET  
-10.0  
dB



STOP 10.00 GHz  
SWP 200 msec

VBW 3 MHz

RES BW 1 MHz (i)

START 2.00 GHz



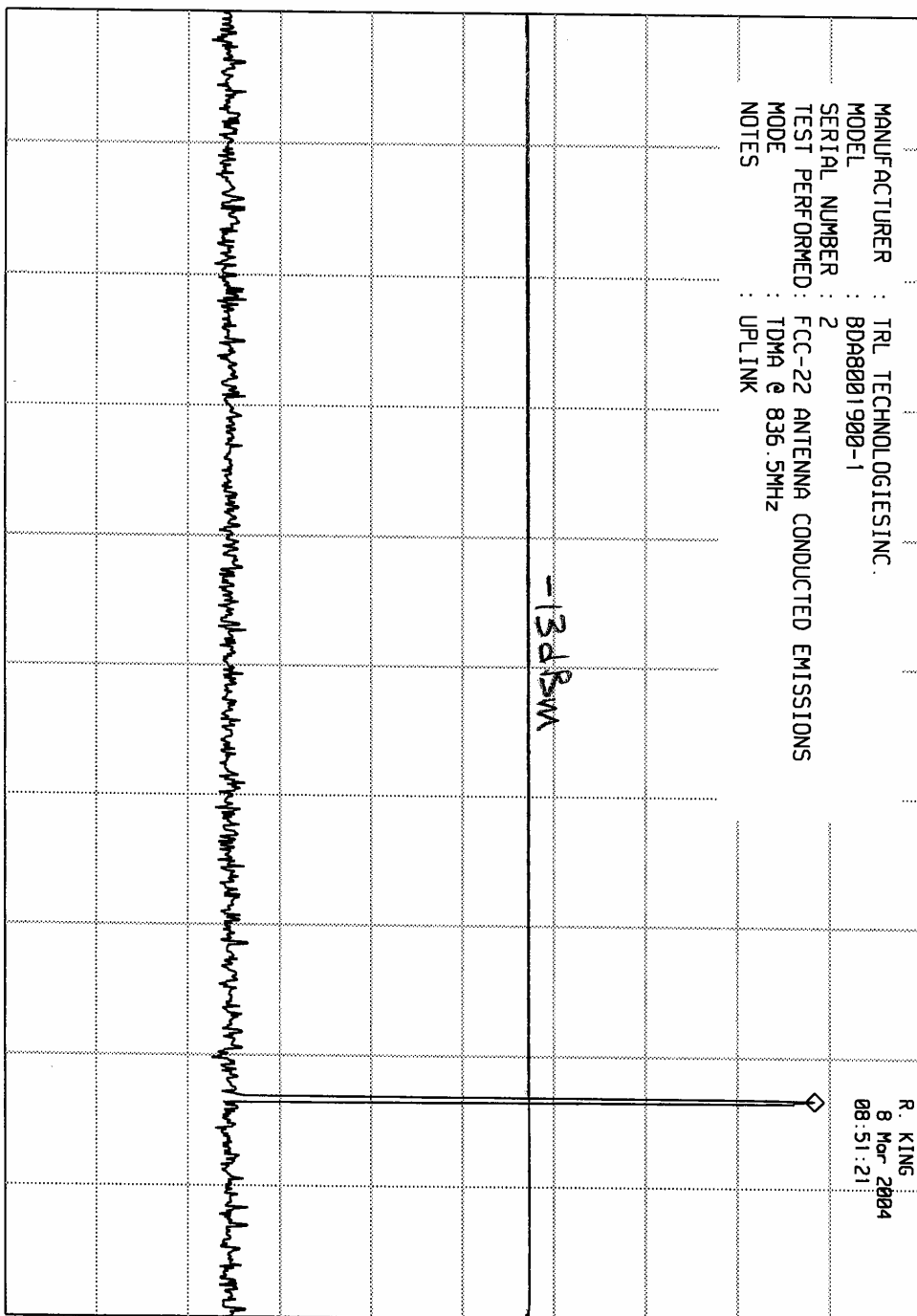
ELITE ELECTRONIC ENGINEERING Inc.

hp REF -10.0 dBm ATTN 10 dB +40dB MKR 837.0 MHz -21.60 dBm

10 dB/  
OFFSET  
-10.0  
dB

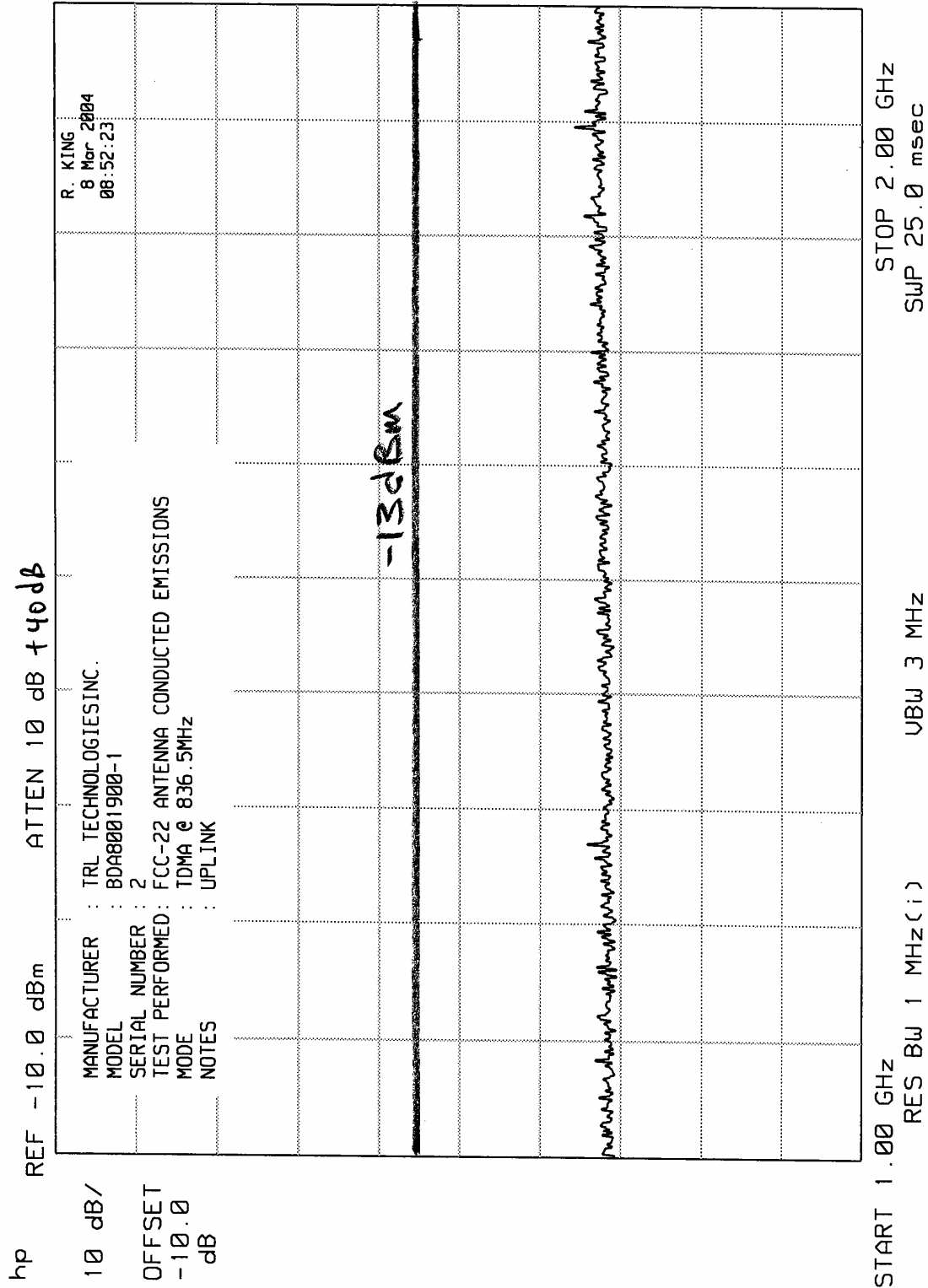
MANUFACTURER : TRL TECHNOLOGIES INC.  
MODEL : BDA8001900-1  
SERIAL NUMBER : 2  
TEST PERFORMED : FCC-22 ANTENNA CONDUCTED EMISSIONS  
MODE : TDMA @ 836.5MHz  
NOTES : UPLINK

R. KING  
8 Mar 2004  
08:51:21



START 30 MHz RES BW 100 kHz(1) VBW 1 MHz STOP 1.000 GHz SWP 728 msec

ELITE ELECTRONIC ENGINEERING INC.



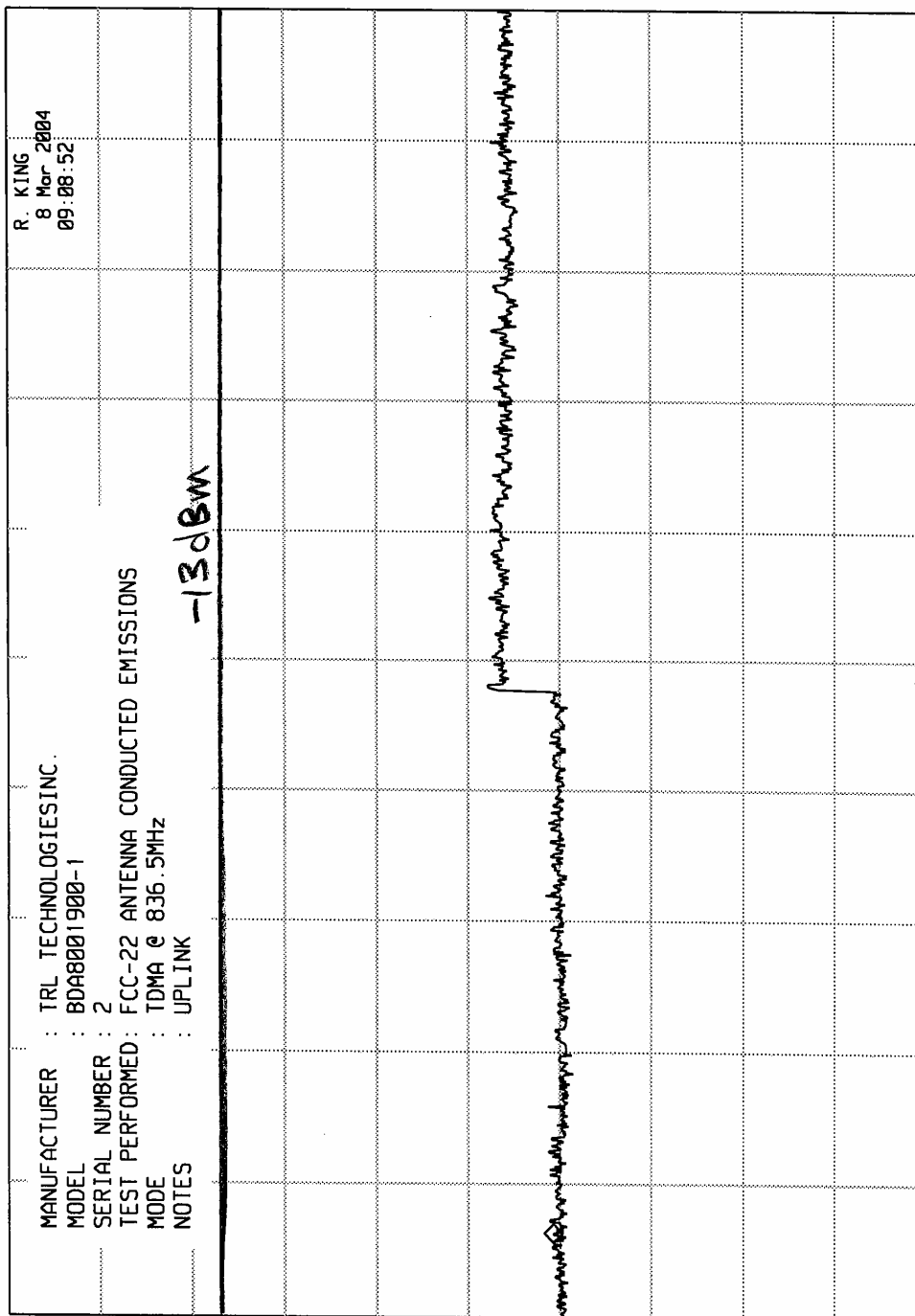
ELITE ELECTRONIC ENGINEERING INC.

h<sub>p</sub> MKR 2.496 GHz  
-69.30 dBm

ATTEN 10 dB +20dB

REF -10.0 dBm

10 dB/

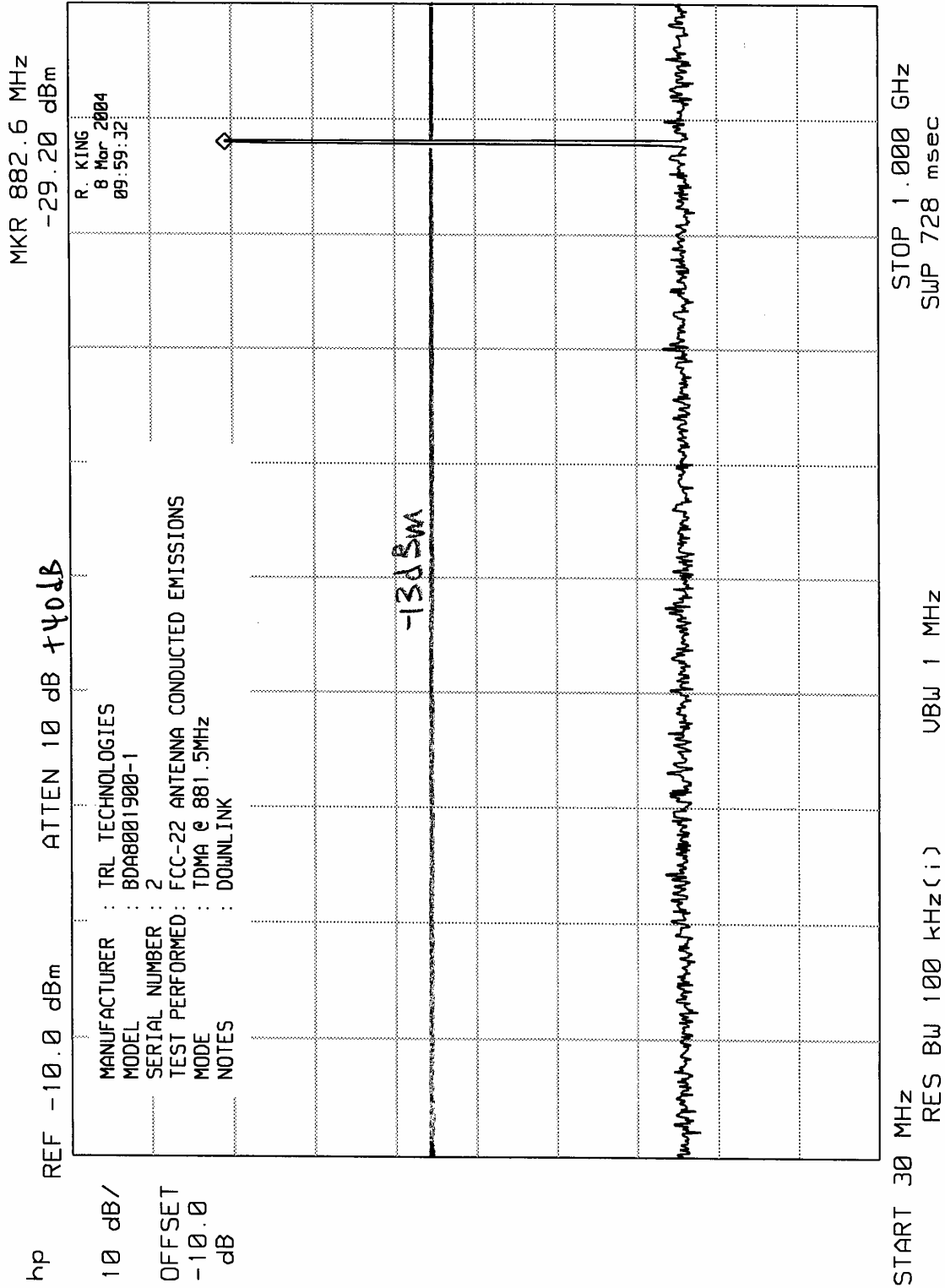


STOP 10.00 GHz  
SWP 200 msec

UBW 3 MHz

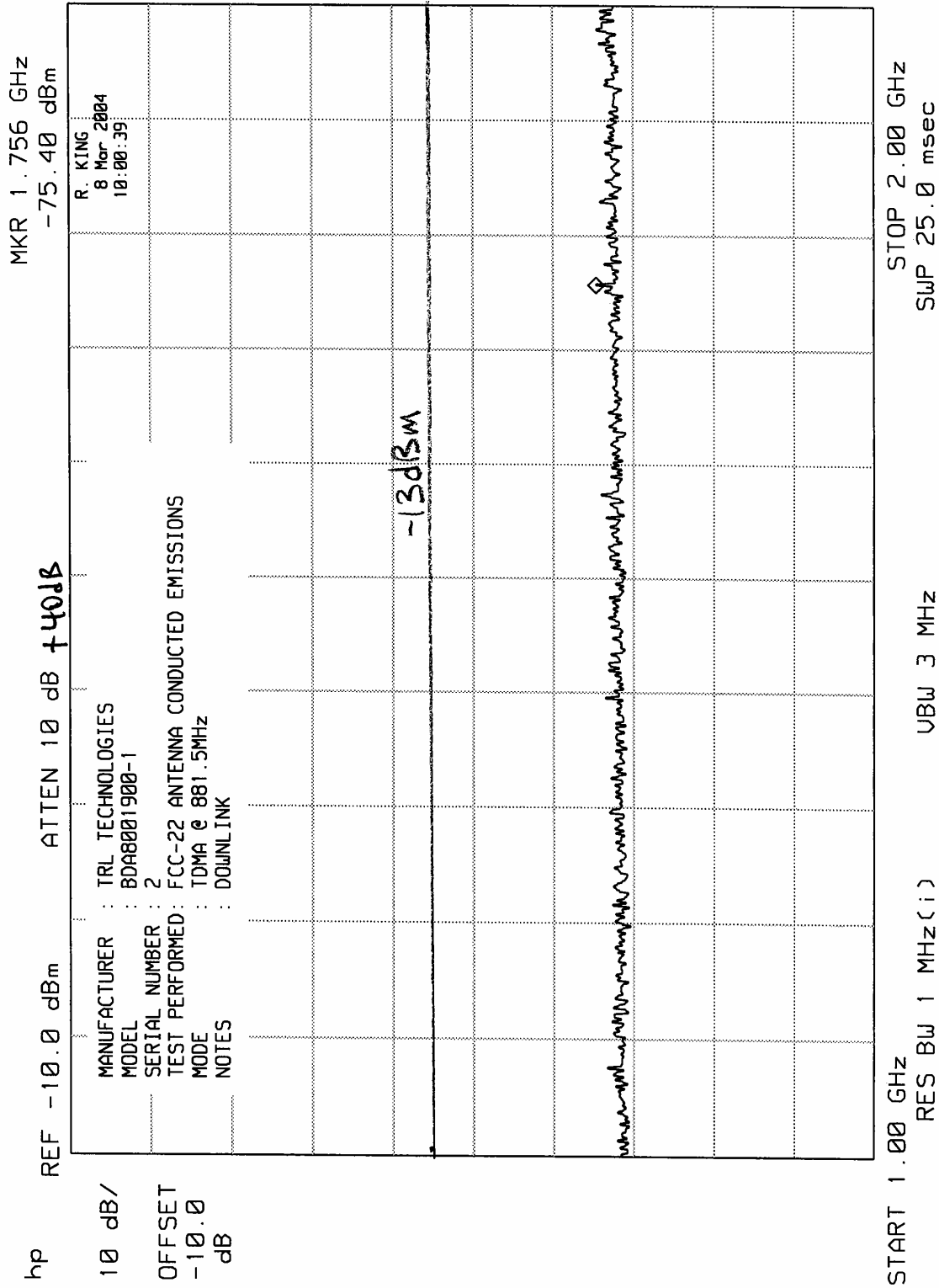
START 2.00 GHz  
RES BW 1 MHz (i)

ELITE ELECTRONIC ENGINEERING Inc.

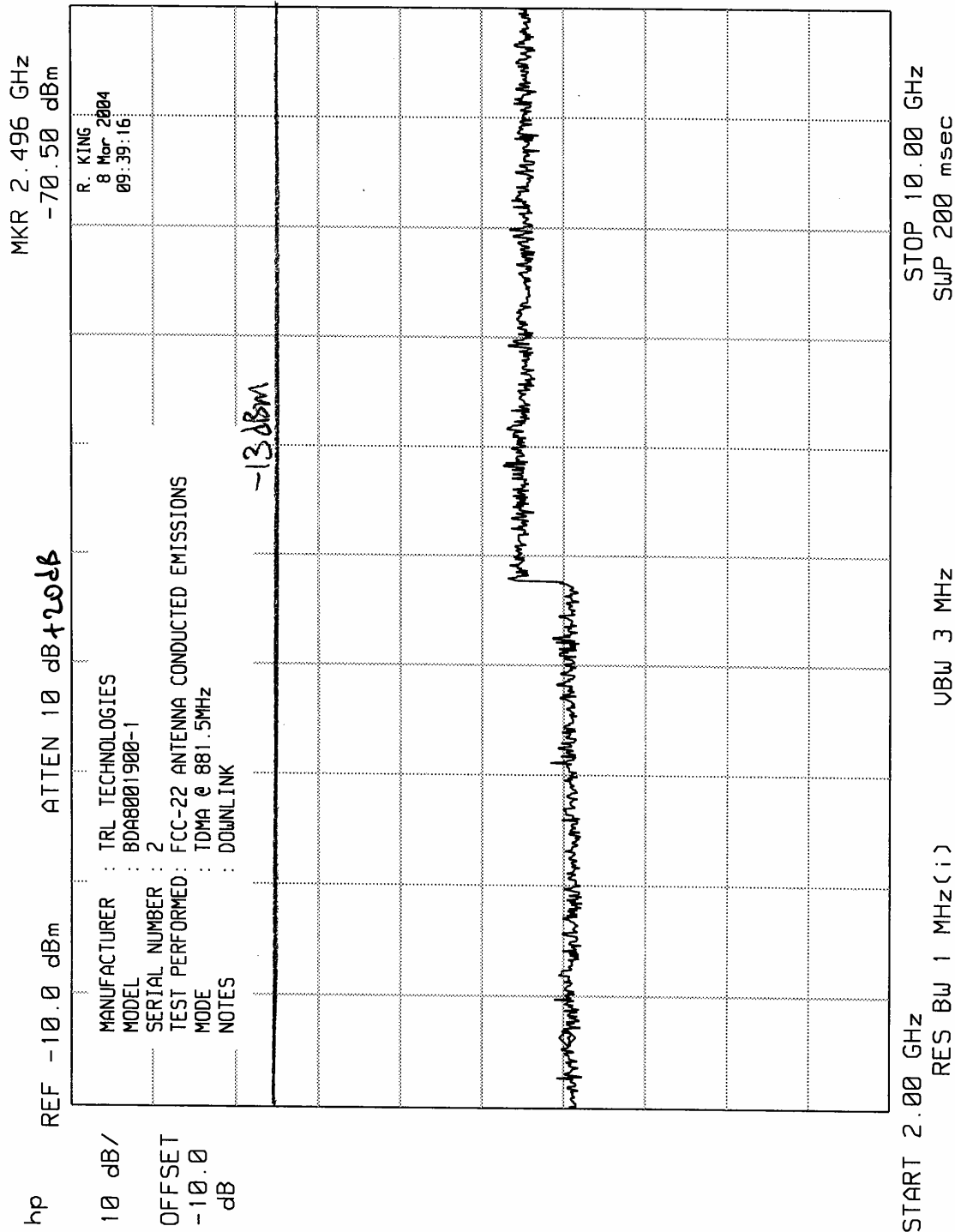


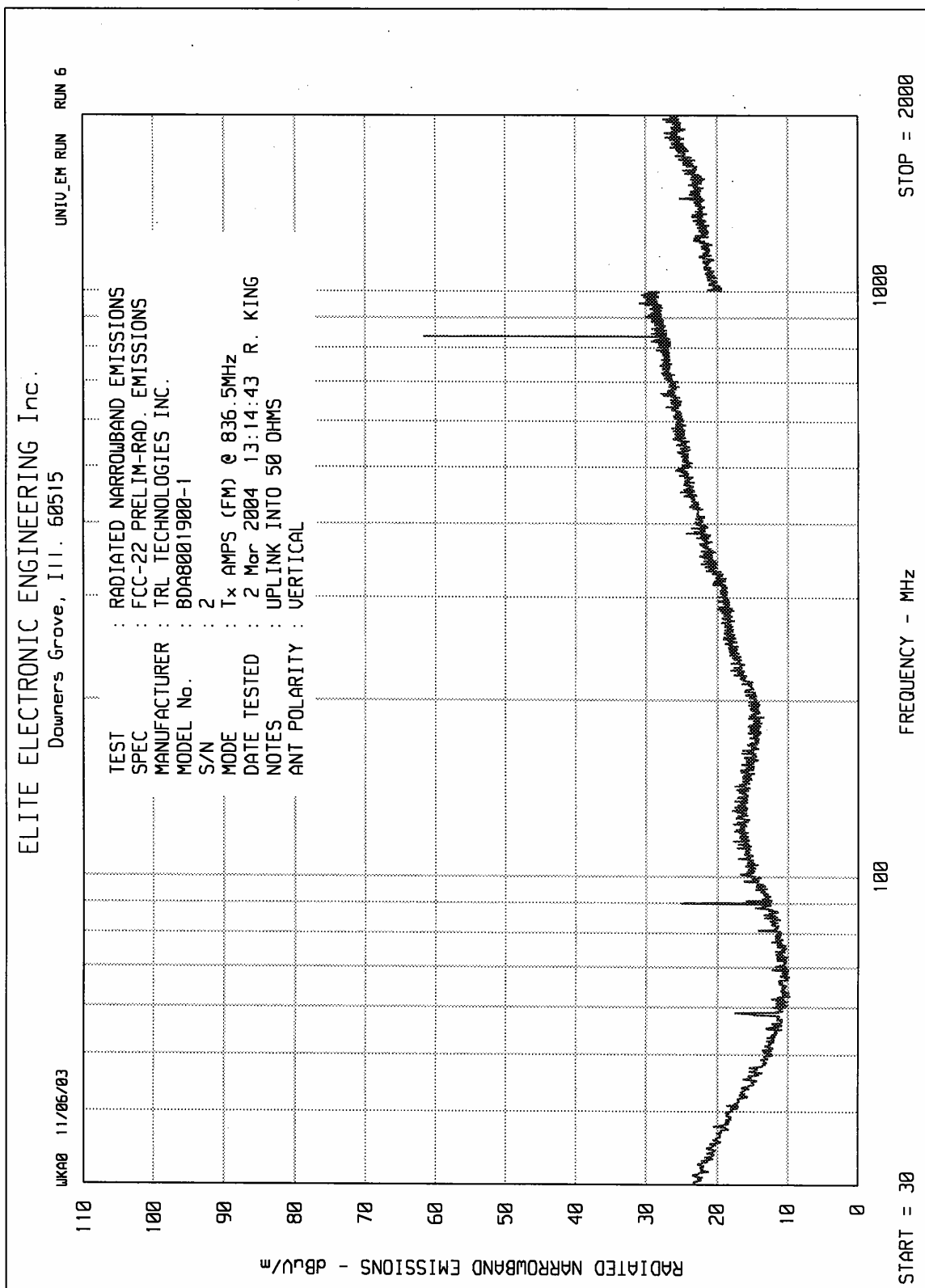


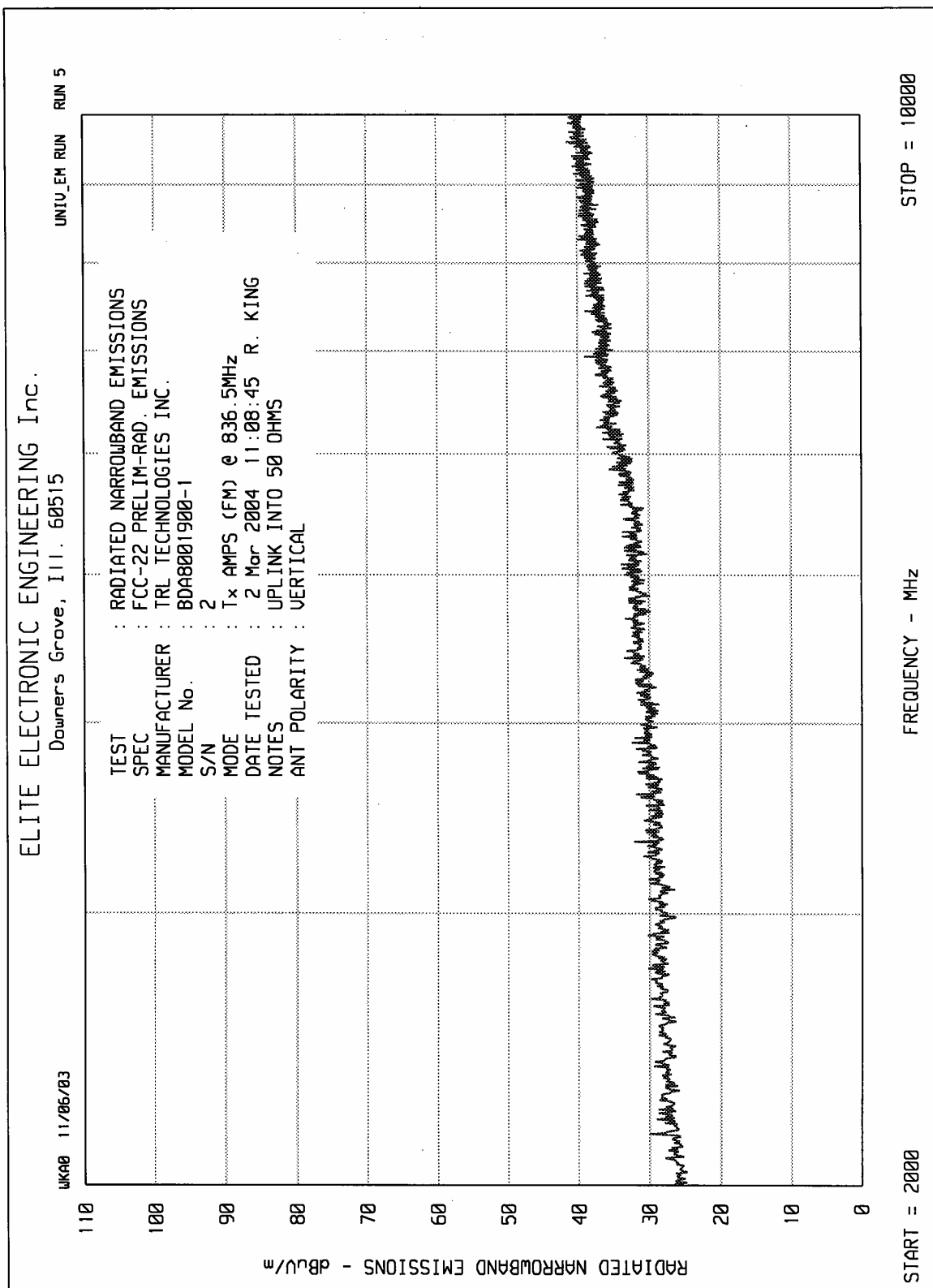
ELITE ELECTRONIC ENGINEERING Inc.

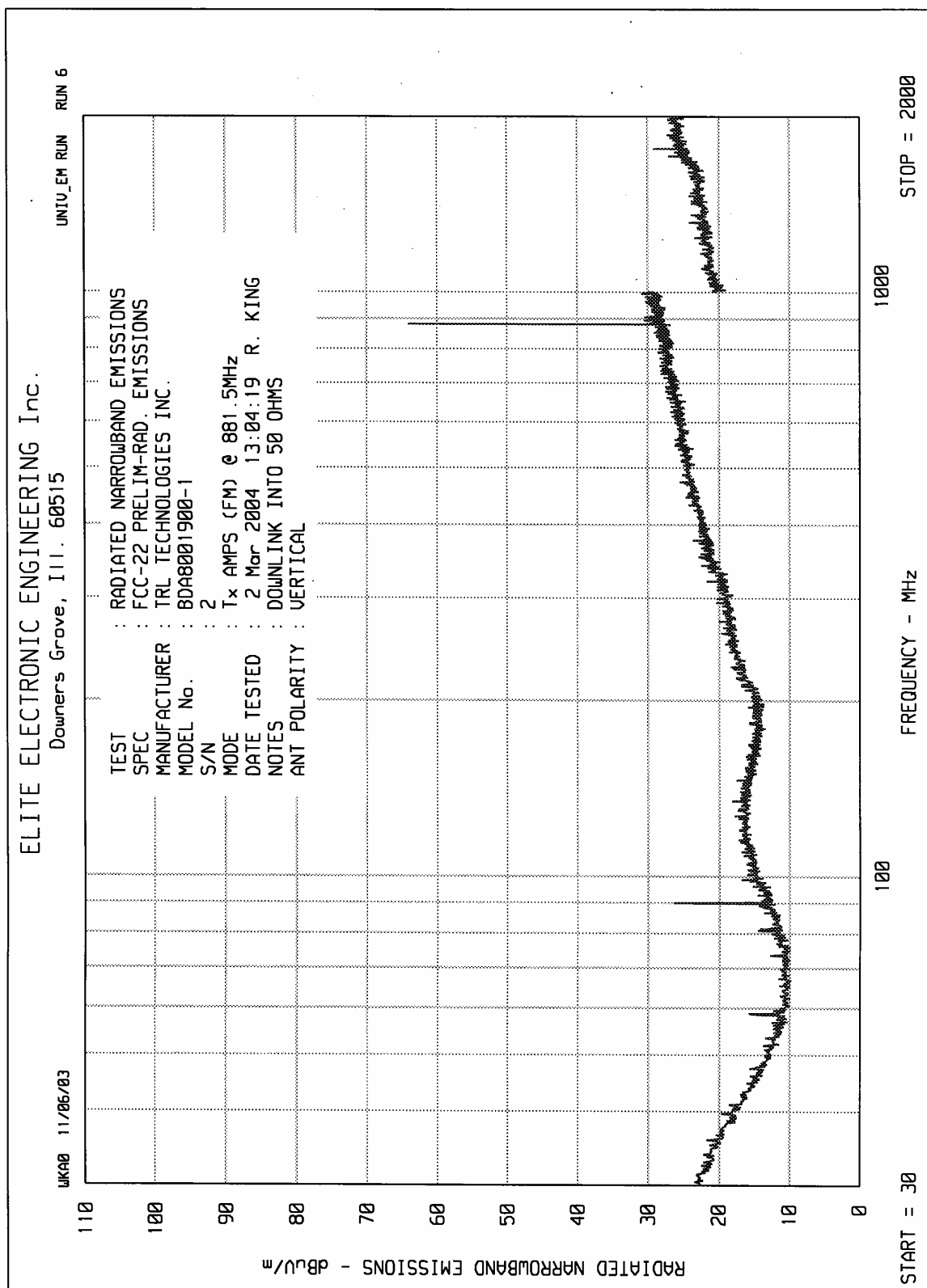


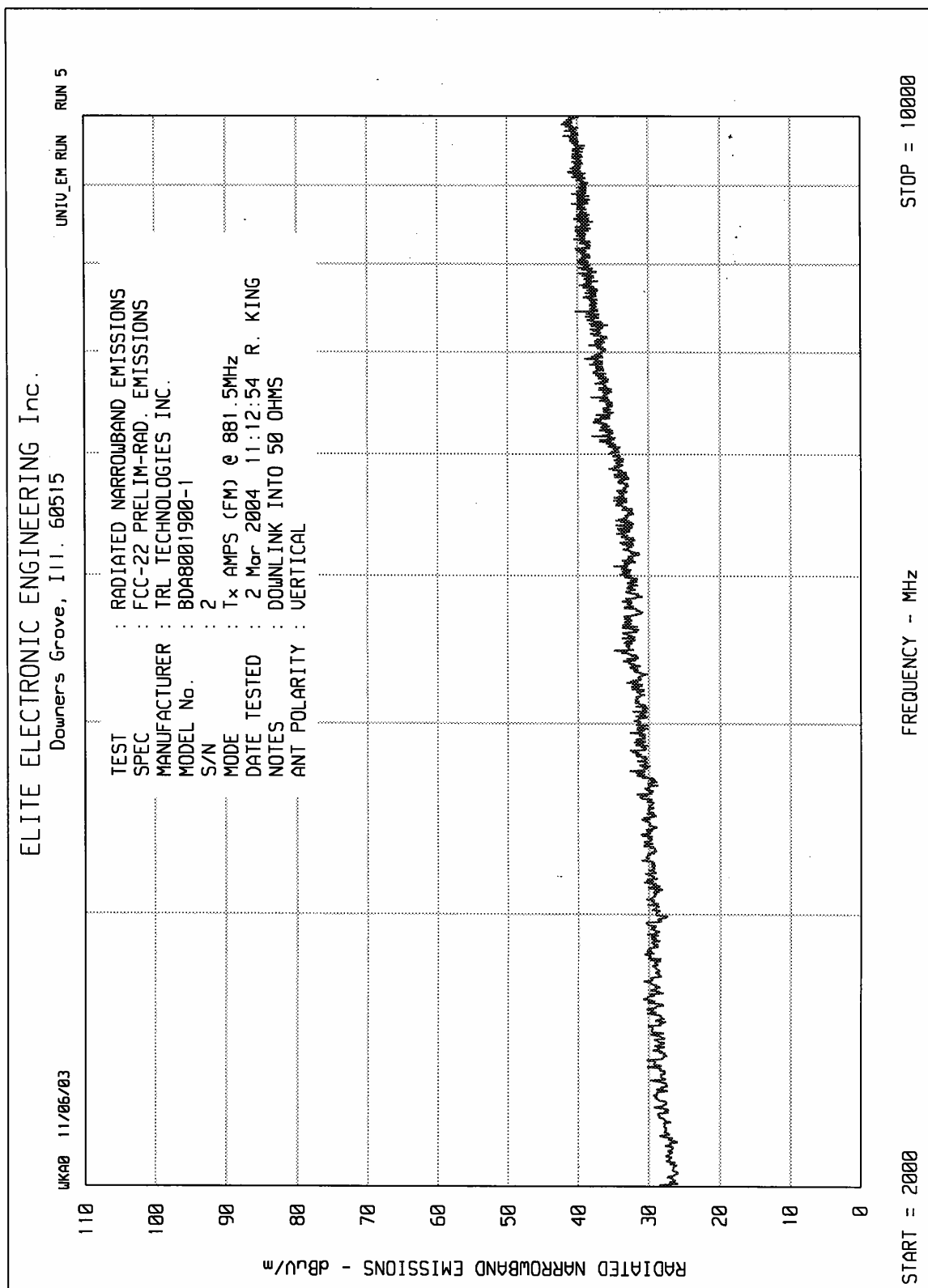
ELITE ELECTRONIC ENGINEERING Inc.

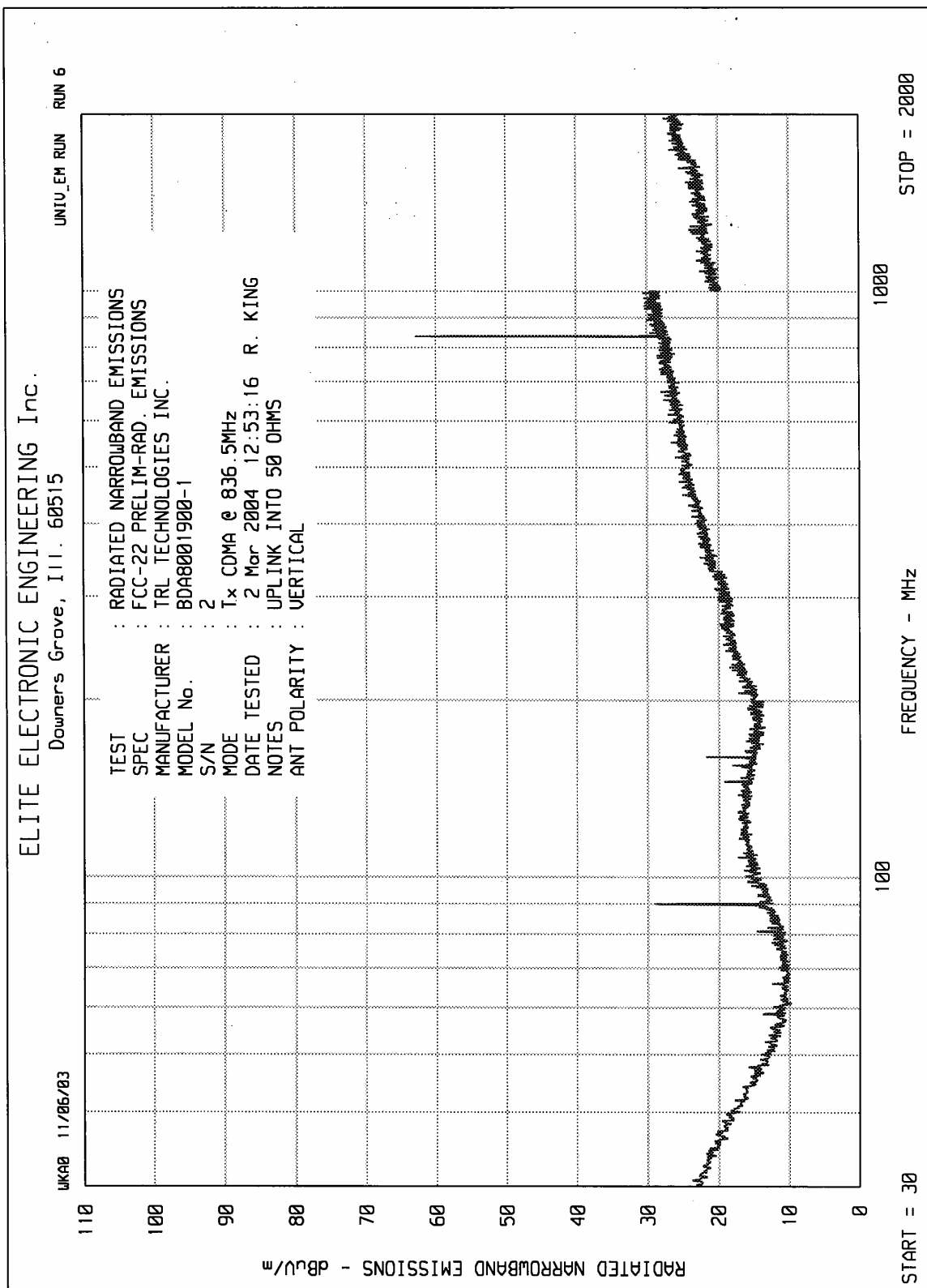


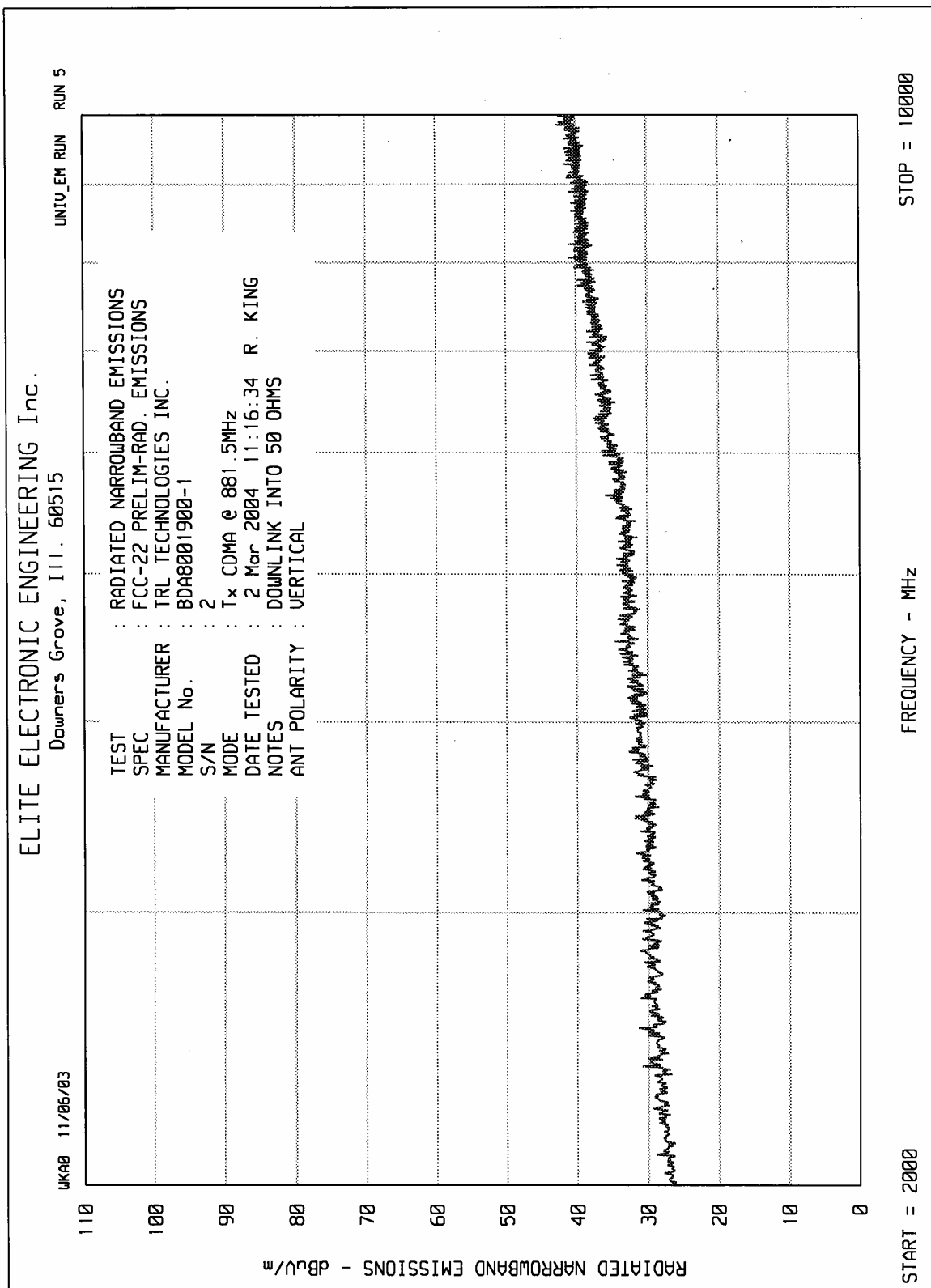




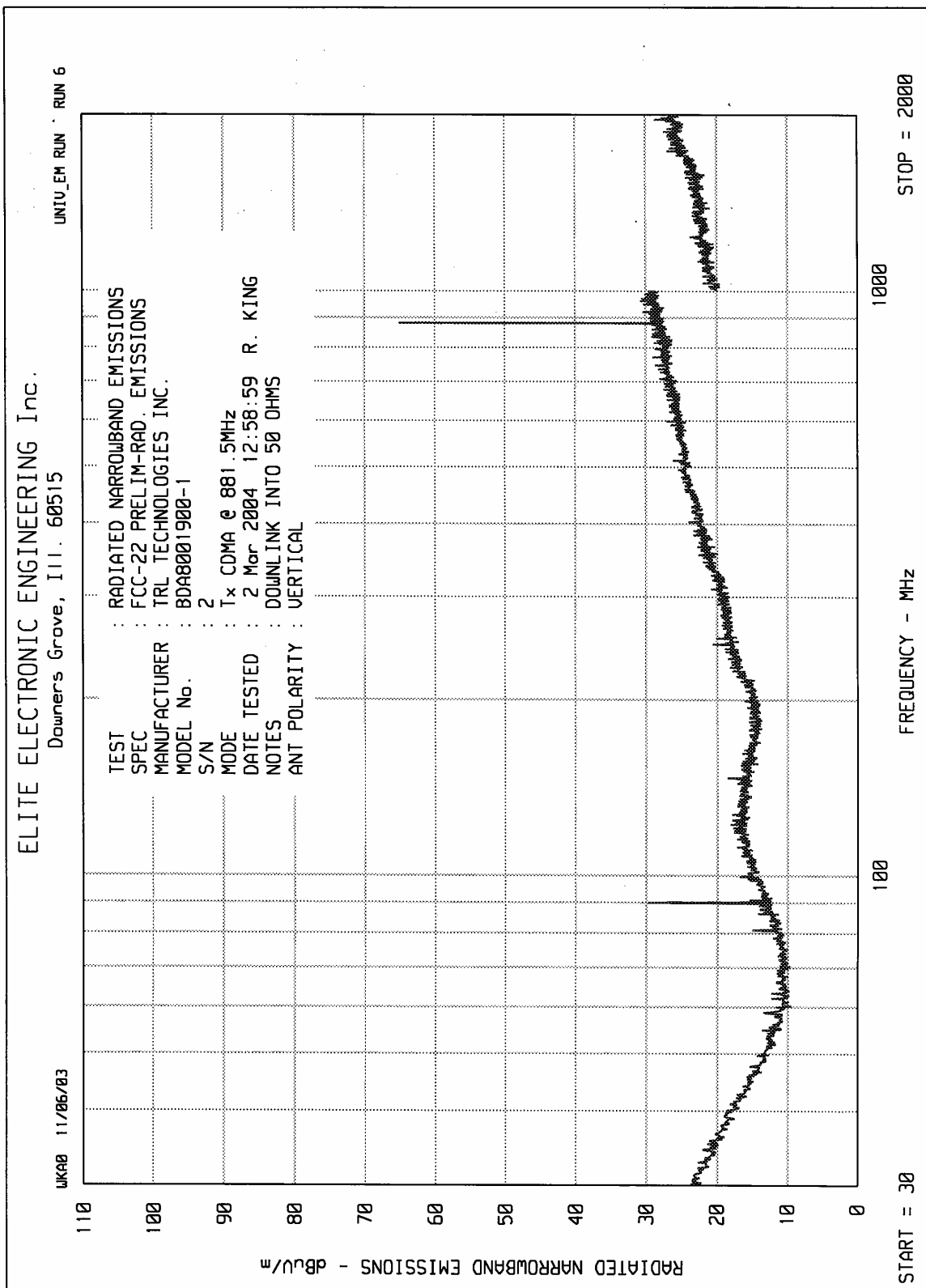


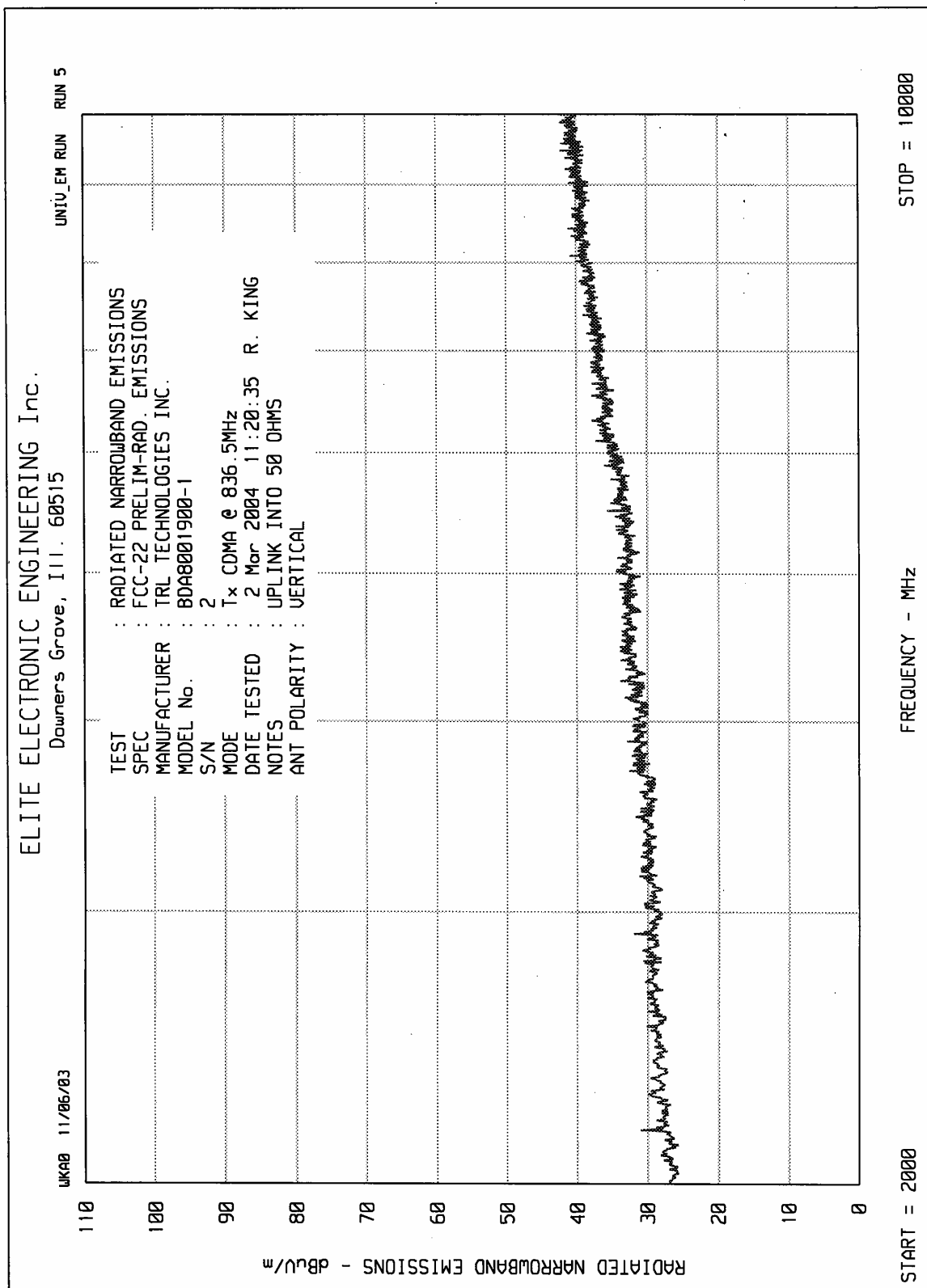


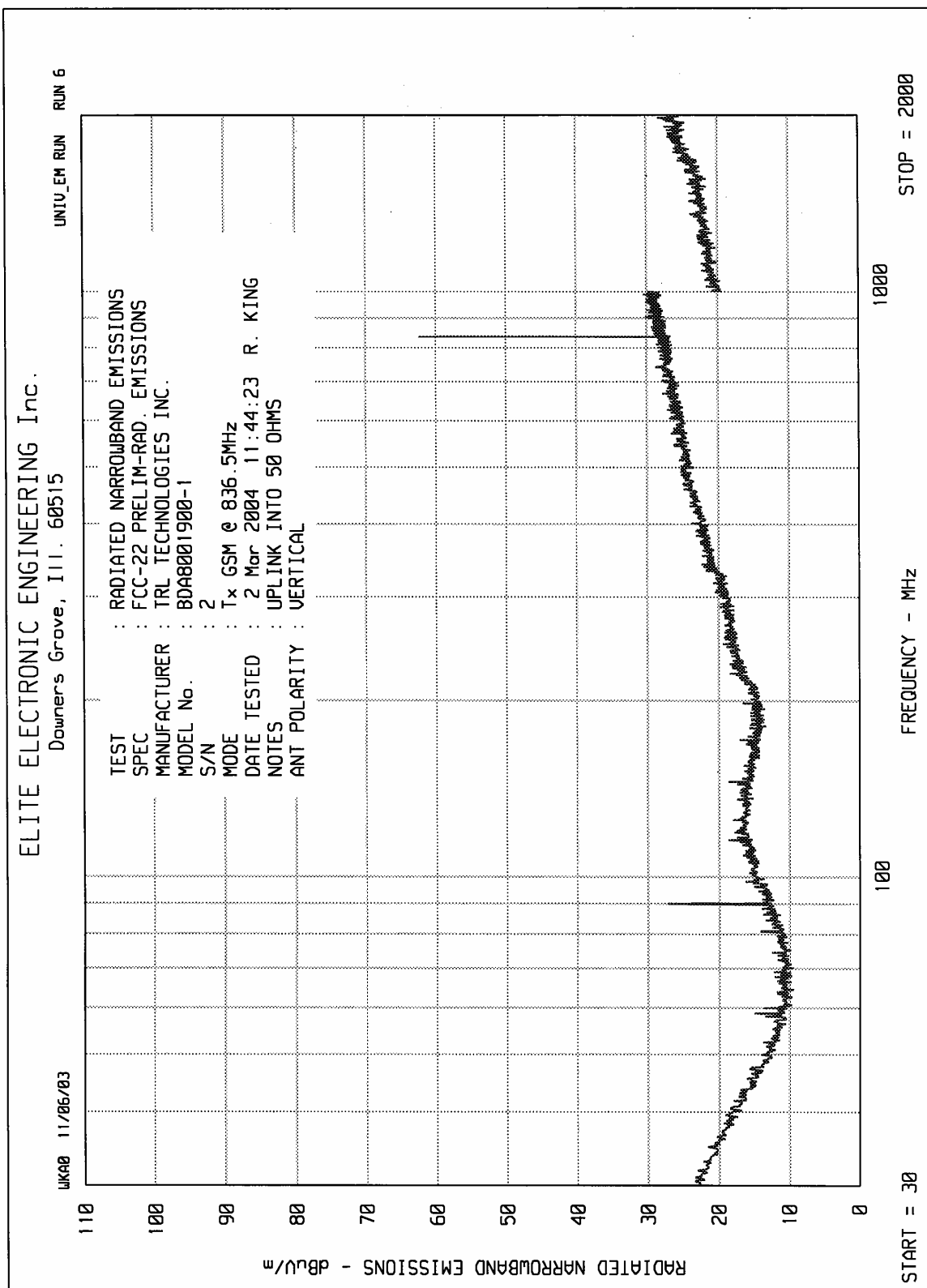


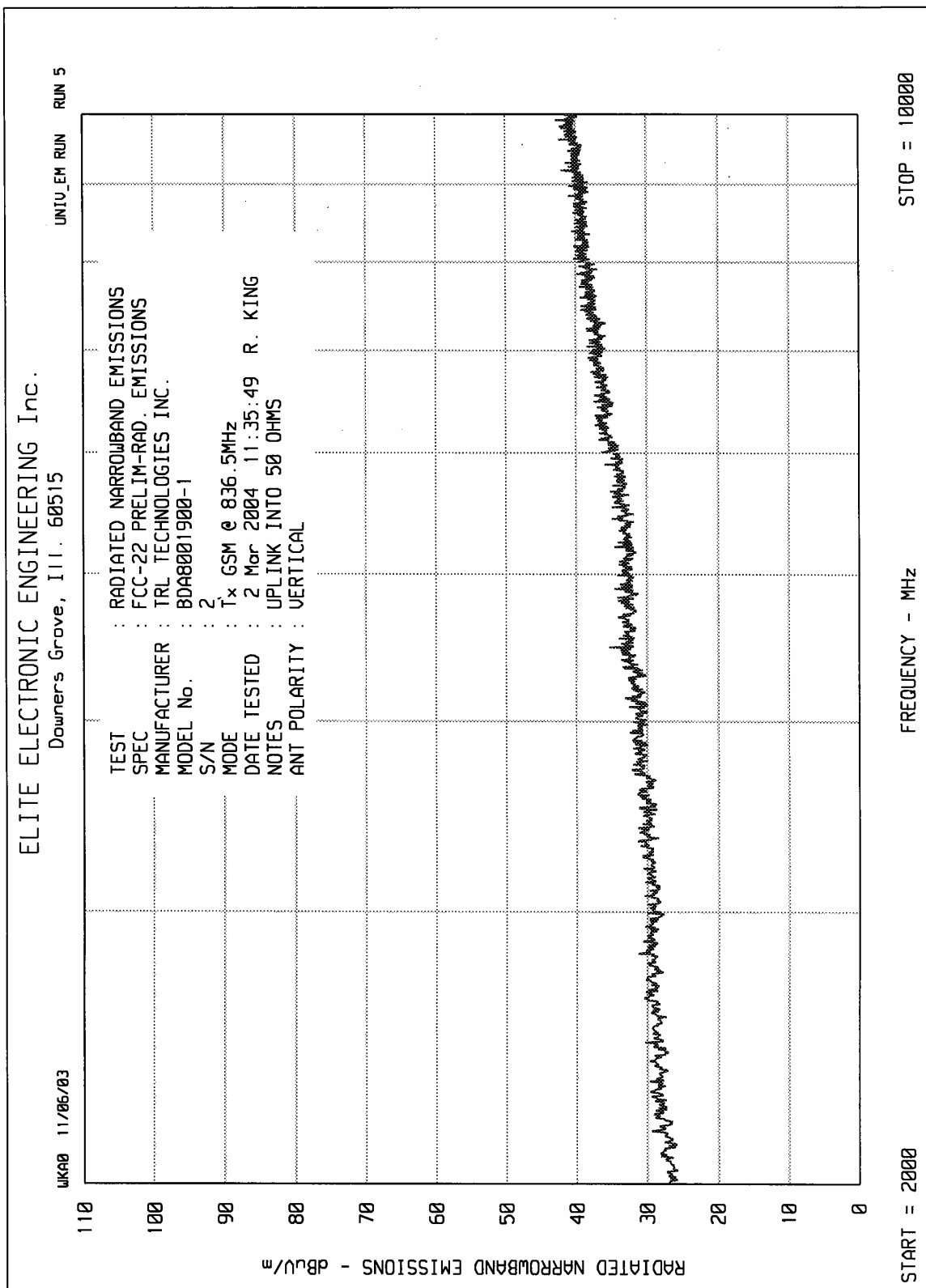


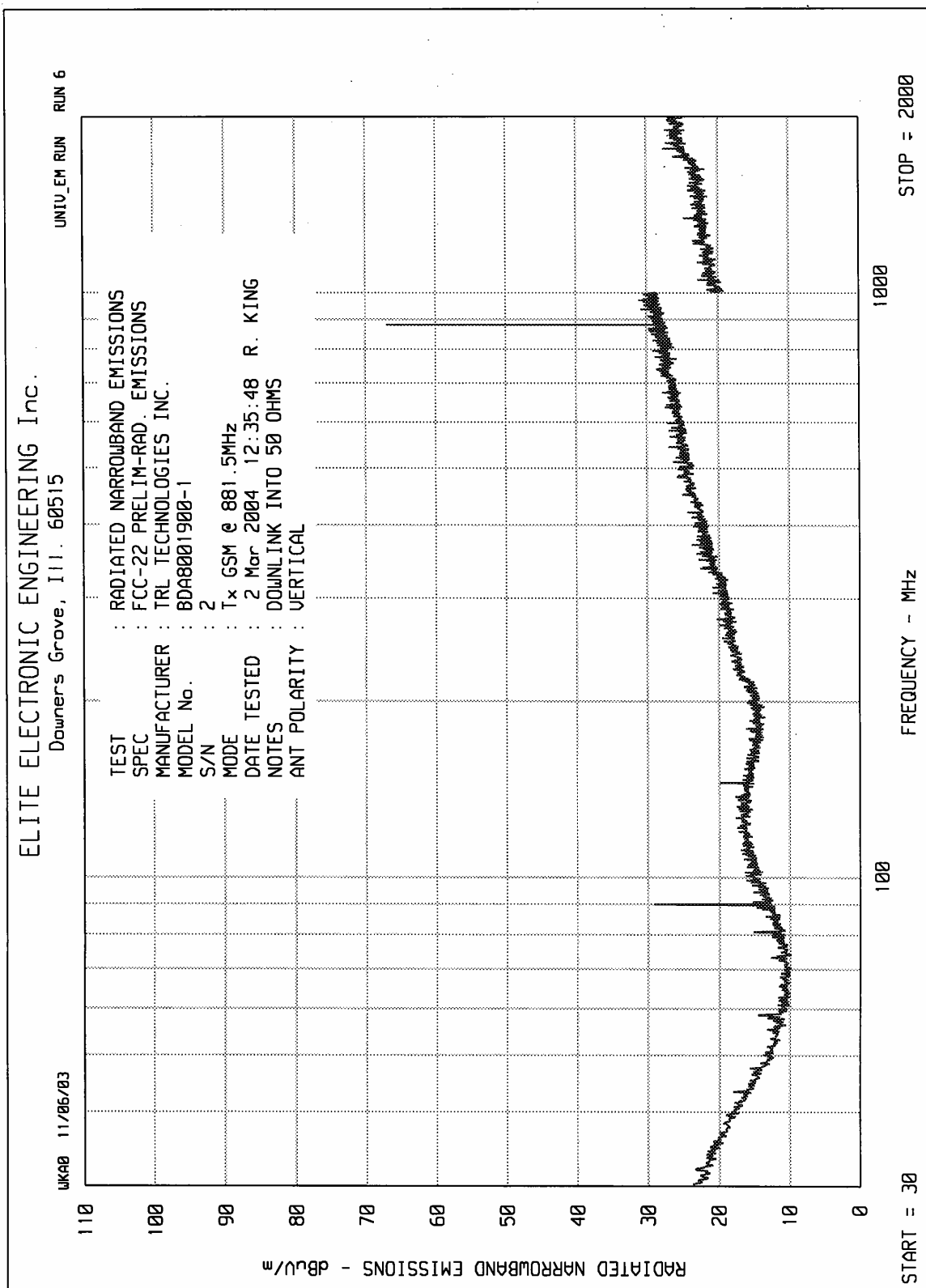


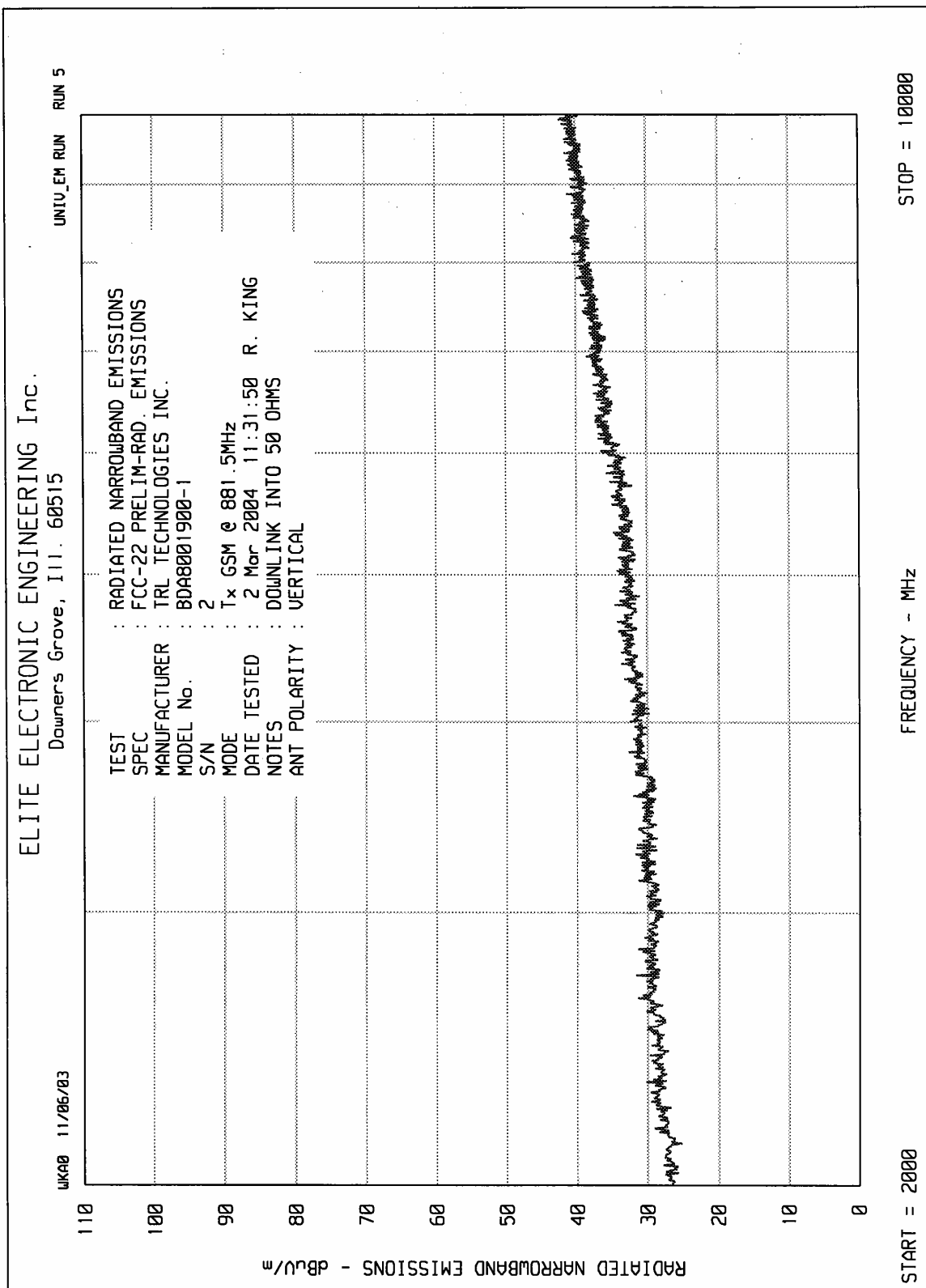


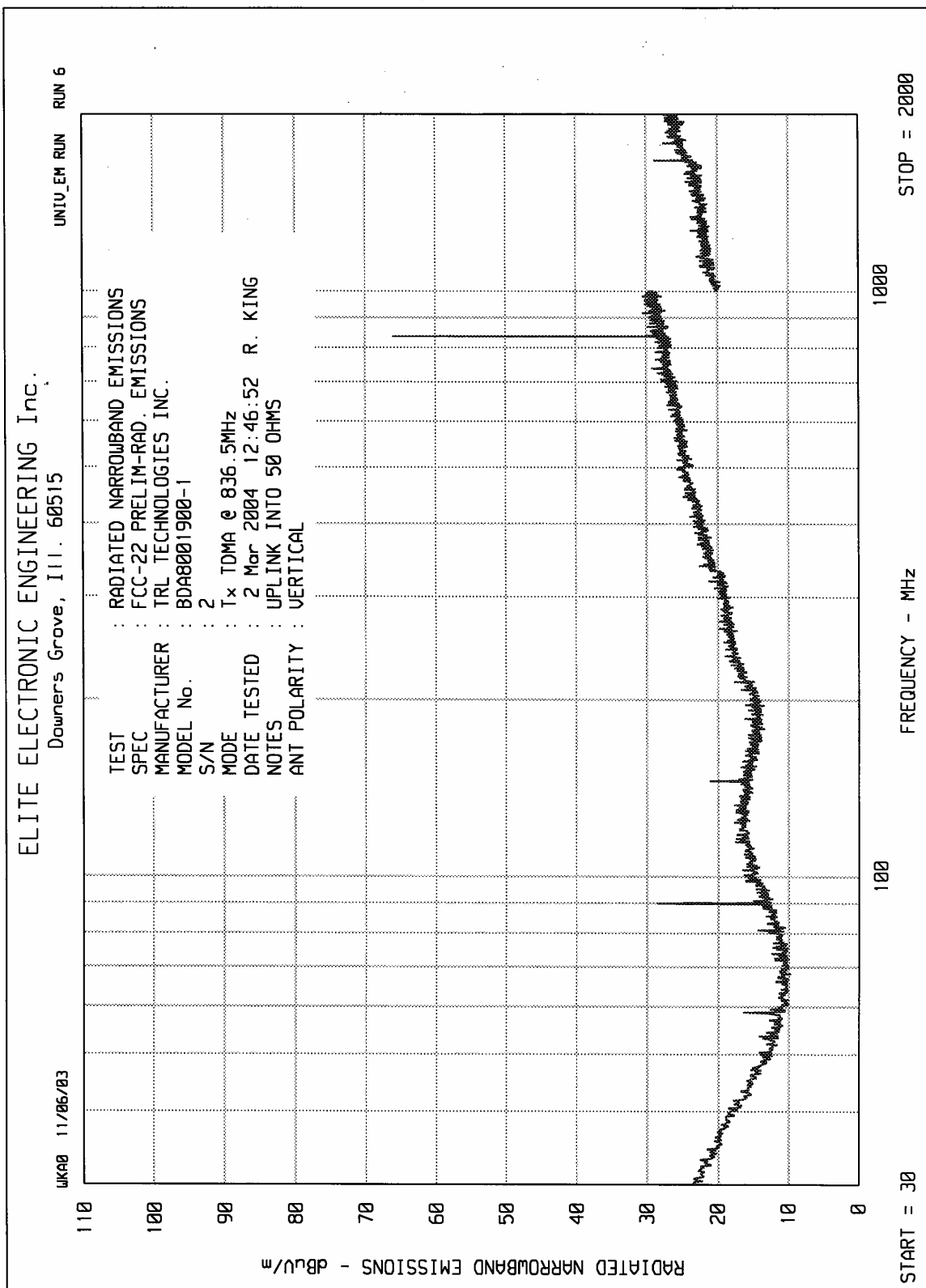


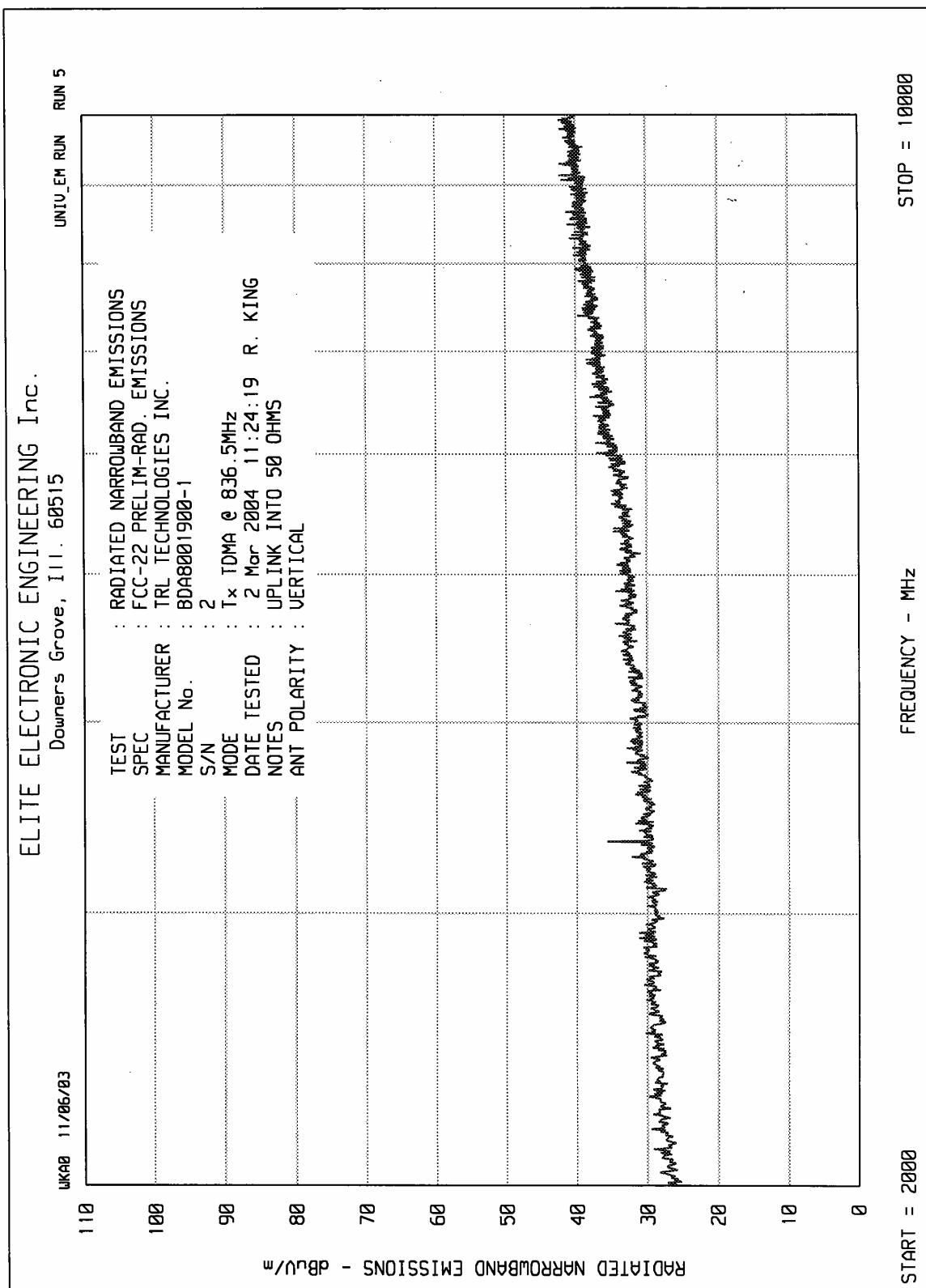




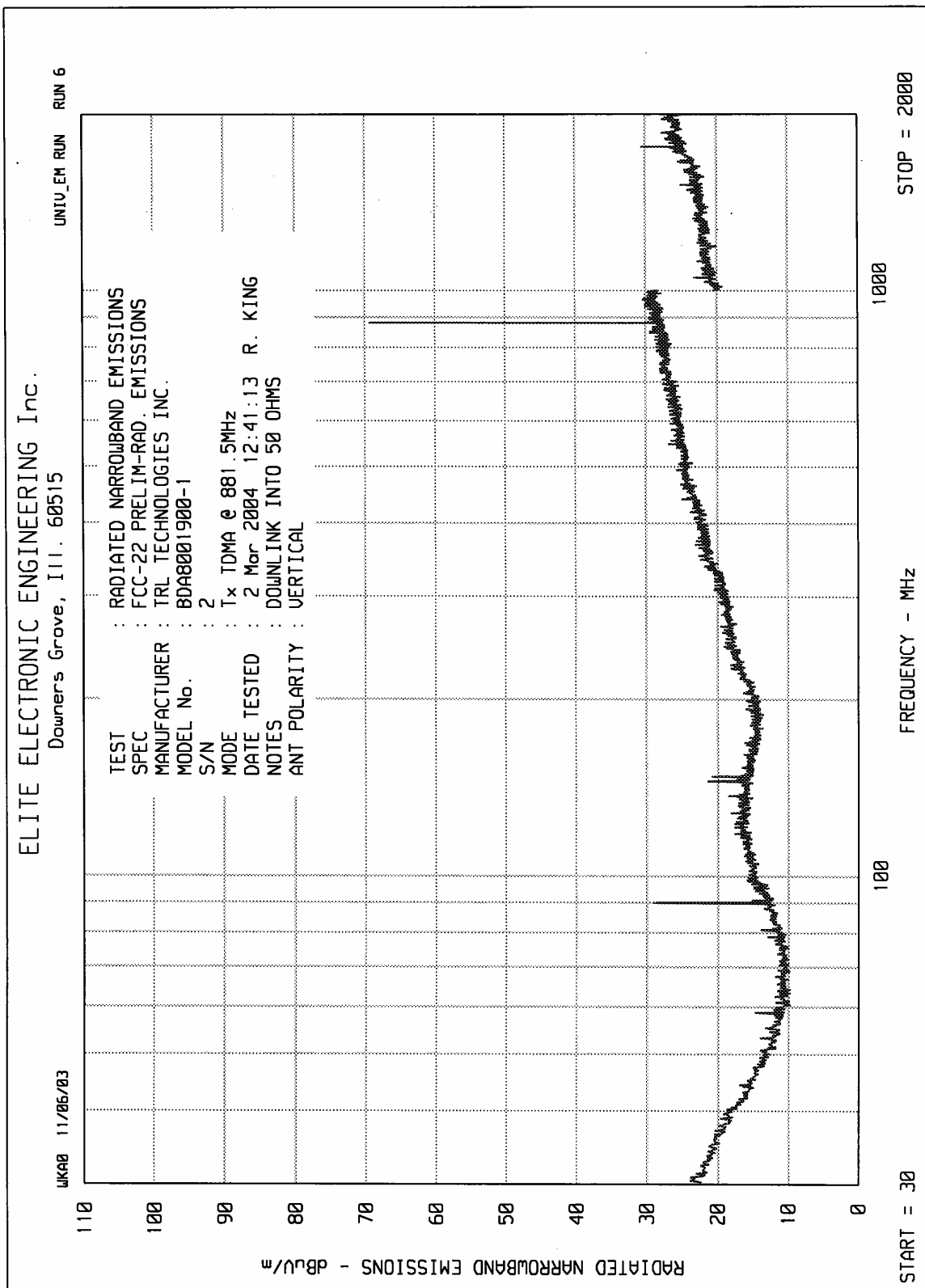


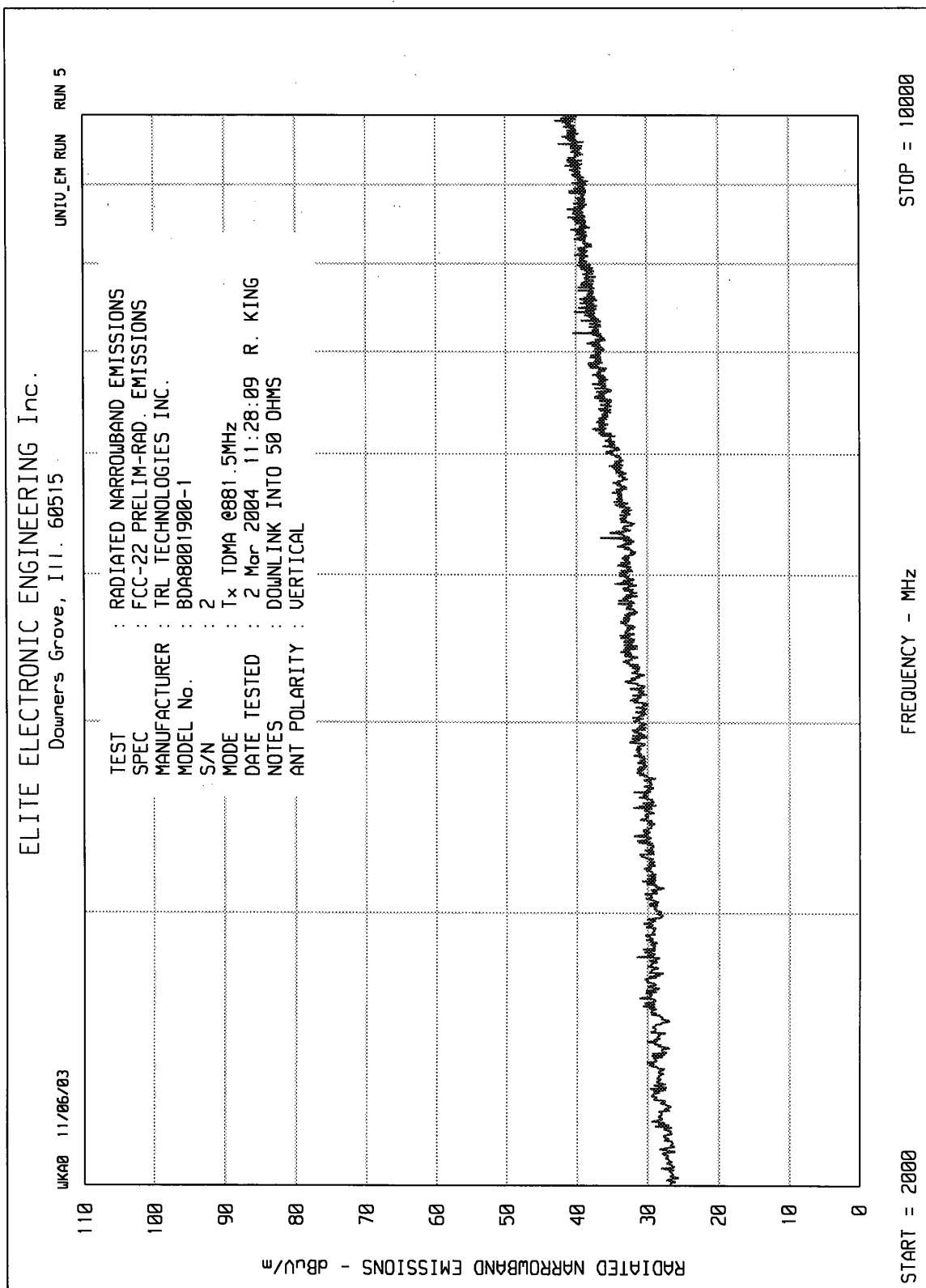














## DATA SHEET

MANUFACTURER : TRL TECHNOLOGY  
MODEL : BDA8001900-1  
SERIA NO. : 2  
SPECIFICATION : FCC-22 SPURIOUS RADIATED EMISSIONS  
DATE : March 4, 2004  
NOTES : Tx Uplink AMPS (FM) @ 836.5MHz  
: TEST DISTANCE IS 3 METERS

FREQUENCY	ANT	METER	MATCHED	ANTENNA	CABLE	ERP	ATTN	MIN
MHz	POL	READING	SIGNAL	GAIN	FACTOR	TOTAL	ATTN	ATTN
		dBuV	dBm	dB	dB	dB	dB	dB
1673.0	H	47.1	-23.8	-1.3	3.5	-28.6	43.6	28
1673.0	V	47.2	-26.2	-1.3	3.5	-31.0	46.0	28
2509.5	H	45.9	-51.7	-0.2	4.4	-56.3	71.3	28
2509.5	V	44.5	-59.6	-0.2	4.4	-64.2	79.2	28
3346.0	H	44.2	-53.7	0.2	5.7	-59.2	74.2	28
3346.0	V	44.2	-55.5	0.2	5.7	-61.0	76.0	28
4182.5	H	40.6	-64.5	1.3	6.3	-69.5	84.5	28
4182.5	V	40.9	-64.5	1.3	6.3	-69.5	84.5	28
5019.0	H	39.8	-64.5	0.9	6.9	-70.5	85.5	28
5019.0	V	39.6	-64.4	0.9	6.9	-70.4	85.4	28
5855.5	H	42.5	-60.4	1.7	7.5	-66.2	81.2	28
5855.5	V	43.0	-60.4	1.7	7.5	-66.2	81.2	28
6692.0	H	42.2	-62.0	0.0	8.1	-70.1	85.1	28
6692.0	V	42.2	-61.9	0.0	8.1	-70.0	85.0	28
7528.5	H	43.5	-60.3	1.0	8.2	-67.5	82.5	28
7428.5	V	43.6	-60.4	0.8	8.2	-67.8	82.8	28
8365.0	H	42.3	-60.4	1.8	8.4	-67.0	82.0	28
8365.0	V	42.0	-60.3	1.8	8.4	-66.9	81.9	28

Checked By: Richard E. King  
Richard E. King



## DATA SHEET

MANUFACTURER : TRL TECHNOLOGY  
MODEL : BDA8001900-1  
SERIA NO. : 2  
SPECIFICATION : FCC-22 SPURIOUS RADIATED EMISSIONS  
DATE : March 2, 2004  
NOTES : Tx Uplink TDMA @ 836.5MHz  
: TEST DISTANCE IS 3 METERS

FREQUENCY MHz	ANT POL	METER READING dBuV	MATCHED SIGNAL dBm	ANTENNA GAIN dB	CABLE FACTOR dB	ERP TOTAL dB	ATTN dB	MIN ATTN dB
1673.0	H	47.9	-22.6	-1.3	3.5	-27.4	42.4	28
1673.0	V	46.4	-26.9	-1.3	3.5	-31.7	46.7	28
2509.5	H	45.5	-51.1	-0.2	4.4	-55.7	70.7	28
2509.5	V	44.9	-58.3	-0.2	4.4	-62.9	77.9	28
3346.0	H	45.8	-49.3	0.2	5.7	-54.8	69.8	28
3346.0	V	45.2	-54.2	0.2	5.7	-59.7	74.7	28
4182.5	H	40.6	-64.5	1.3	6.3	-69.5	84.5	28
4182.5	V	40.9	-64.5	1.3	6.3	-69.5	84.5	28
5019.0	H	39.8	-64.5	0.9	6.9	-70.5	85.5	28
5019.0	V	39.6	-64.4	0.9	6.9	-70.4	85.4	28
5855.5	H	42.5	-60.4	1.7	7.5	-66.2	81.2	28
5855.5	V	43.0	-60.4	1.7	7.5	-66.2	81.2	28
6692.0	H	42.2	-62.0	0.0	8.1	-70.1	85.1	28
6692.0	V	42.2	-61.9	0.0	8.1	-70.0	85.0	28
7528.5	H	43.5	-60.3	1.0	8.2	-67.5	82.5	28
7428.5	V	43.6	-60.4	0.8	8.2	-67.8	82.8	28
8365.0	H	42.3	-60.4	1.8	8.4	-67.0	82.0	28
8365.0	V	42.0	-60.3	1.8	8.4	-66.9	81.9	28

Checked By: Richard E. King  
Richard E. King



## DATA SHEET

MANUFACTURER : TRL TECHNOLOGY  
MODEL : BDA8001900-1  
SERIA NO. : 2  
SPECIFICATION : FCC-22 SPURIOUS RADIATED EMISSIONS  
DATE : March 2, 2004  
NOTES : Tx Uplink CDMA @ 836.5MHz  
: TEST DISTANCE IS 3 METERS

FREQUENCY MHz	ANT POL	METER READING dBuV	MATCHED SIGNAL dBm	ANTENNA GAIN dB	CABLE FACTOR dB	ERP TOTAL dB	ATTN dB	MIN ATTN dB
1673.0	H	51.3	-19.1	-1.3	3.5	-23.9	38.9	28
1673.0	V	50.4	-22.9	-1.3	3.5	-27.7	42.7	28
2509.5	H	49.2	-46.7	-0.2	4.4	-51.3	66.3	28
2509.5	V	47.4	-54.4	-0.2	4.4	-59.0	74.0	28
3346.0	H	45.7	-49.6	0.2	5.7	-55.1	70.1	28
3346.0	V	45.1	-54.4	0.2	5.7	-59.9	74.9	28
4182.5	H	40.3	-55.6	1.3	6.3	-60.6	75.6	28
4182.5	V	40.9	-64.5	1.3	6.3	-69.5	84.5	28
5019.0	H	39.8	-64.5	0.9	6.9	-70.5	85.5	28
5019.0	V	39.6	-64.4	0.9	6.9	-70.4	85.4	28
5855.5	H	42.5	-60.4	1.7	7.5	-66.2	81.2	28
5855.5	V	43.0	-60.4	1.7	7.5	-66.2	81.2	28
6692.0	H	42.2	-62.0	0.0	8.1	-70.1	85.1	28
6692.0	V	42.2	-61.9	0.0	8.1	-70.0	85.0	28
7528.5	H	43.5	-60.3	1.0	8.2	-67.5	82.5	28
7428.5	V	43.6	-60.4	0.8	8.2	-67.8	82.8	28
8365.0	H	42.3	-60.4	1.8	8.4	-67.0	82.0	28
8365.0	V	42.0	-60.3	1.8	8.4	-66.9	81.9	28

Checked By: Richard E. King  
Richard E. King



## DATA SHEET

MANUFACTURER : TRL TECHNOLOGY  
 MODEL : BDA8001900-1  
 SERIA NO. : 2  
 SPECIFICATION : FCC-22 SPURIOUS RADIATED EMISSIONS  
 DATE : March 2, 2004  
 NOTES : Tx Uplink GSM @ 836.5MHz  
 : TEST DISTANCE IS 3 METERS

FREQUENCY	ANT	METER	MATCHED	ANTENNA	CABLE	ERP		MIN
MHz	POL	READING	SIGNAL	GAIN	FACTOR	TOTAL	ATTN	ATTN
		dBuV	dBm	dB	dB	dB	dB	dB
1673.0	H	51.9	-19.2	-1.3	3.5	-24.0	34.0	28
1673.0	V	50.9	-22.0	-1.3	3.5	-26.8	36.8	28
2509.5	H	44.9	-52.2	-0.2	4.4	-56.8	66.8	28
2509.5	V	44.8	-58.1	-0.2	4.4	-62.7	72.7	28
3346.0	H	45.4	-49.9	0.2	5.7	-55.4	65.4	28
3346.0	V	43.1	-54.4	0.2	5.7	-59.9	69.9	28
4182.5	H	39.4	-58.6	1.3	6.3	-63.6	73.6	28
4182.5	V	40.9	-64.5	1.3	6.3	-69.5	79.5	28
5019.0	H	39.8	-64.5	0.9	6.9	-70.5	80.5	28
5019.0	V	39.6	-64.4	0.9	6.9	-70.4	80.4	28
5855.5	H	42.5	-60.4	1.7	7.5	-66.2	76.2	28
5855.5	V	43.0	-60.4	1.7	7.5	-66.2	76.2	28
6692.0	H	42.2	-62.0	0.0	8.1	-70.1	80.1	28
6692.0	V	42.2	-61.9	0.0	8.1	-70.0	80.0	28
7528.5	H	43.5	-60.3	1.0	8.2	-67.5	77.5	28
7428.5	V	43.6	-60.4	0.8	8.2	-67.8	77.8	28
8365.0	H	42.3	-60.4	1.8	8.4	-67.0	77.0	28
8365.0	V	42.0	-60.3	1.8	8.4	-66.9	76.9	28

Checked By: Richard E. King  
 Richard E. King



## DATA SHEET

MANUFACTURER : TRL TECHNOLOGY  
MODEL : BDA8001900-1  
SERIA NO. : 2  
SPECIFICATION : FCC-22 SPURIOUS RADIATED EMISSIONS  
DATE : March 4, 2004  
NOTES : Tx Downlink AMPS (FM) @ 881.5MHz  
: TEST DISTANCE IS 3 METERS

FREQUENCY	ANT	METER	MATCHED	ANTENNA	CABLE	ERP		MIN
MHz	POL	READING	SIGNAL	GAIN	FACTOR	TOTAL	ATTN	ATTN
		dBuV	dBm	dB	dB	dB	dB	dB
1763.0	H	47.5	-24.1	-1.3	3.6	-29.0	39.0	23
1763.0	V	51.2	-22.0	-1.3	3.6	-26.9	36.9	23
2644.5	H	46.5	-57.9	-0.1	4.4	-62.4	72.4	23
2644.5	V	45.8	-58.3	-0.1	4.4	-62.8	72.8	23
3526.0	H	41.1	-60.5	0.5	6.1	-66.1	76.1	23
3526.0	V	41.7	-60.3	0.5	6.1	-65.9	75.9	23
4407.0	H	40.6	-64.5	1.3	6.3	-69.5	79.5	23
4407.0	V	40.9	-64.5	1.3	6.3	-69.5	79.5	23
5289.0	H	39.8	-64.5	1.2	7.1	-70.4	80.4	23
5289.0	V	39.6	-64.4	1.2	7.1	-70.3	80.3	23
6170.5	H	42.5	-60.4	1.6	7.7	-66.5	76.5	23
6170.5	V	43.0	-60.4	1.6	7.7	-66.5	76.5	23
7052.0	H	42.2	-62.0	0.2	8.2	-70.0	80.0	23
7052.0	V	42.2	-61.9	0.2	8.2	-69.9	79.9	23
7933.5	H	43.5	-60.3	1.4	8.5	-67.4	77.4	23
7933.5	V	43.6	-60.4	1.4	8.5	-67.5	77.5	23
8815.0	H	42.3	-60.4	2.0	8.8	-67.2	77.2	23
8815.0	V	42.0	-60.3	2.0	8.8	-67.1	77.1	23

Checked By: Richard E. King  
Richard E. King



## DATA SHEET

MANUFACTURER : TRL TECHNOLOGY  
MODEL : BDA8001900-1  
SERIA NO. : 2  
SPECIFICATION : FCC-22 SPURIOUS RADIATED EMISSIONS  
DATE : March 2, 2004  
NOTES : Tx Downlink TDMA @ 881.5MHz  
: TEST DISTANCE IS 3 METERS

FREQUENCY	ANT	METER	MATCHED	ANTENNA	CABLE	ERP	ATTN	MIN
MHz	POL	READING	SIGNAL	GAIN	FACTOR	TOTAL	ATTN	ATTN
		dBuV	dBm	dB	dB	dB	dB	dB
1763.0	H	49.8	-22.1	-1.3	3.6	-27.0	37.0	23
1763.0	V	52.6	-17.7	-1.3	3.6	-22.6	32.6	23
2644.5	H	46.8	-57.9	-0.1	4.4	-62.4	72.4	23
2644.5	V	45.9	-58.7	-0.1	4.4	-63.2	73.2	23
3526.0	H	43.9	-53.8	0.5	6.1	-59.4	69.4	23
3526.0	V	44.2	-44.9	0.5	6.1	-50.5	60.5	23
4407.0	H	40.6	-64.5	1.3	6.3	-69.5	79.5	23
4407.0	V	40.9	-64.5	1.3	6.3	-69.5	79.5	23
5289.0	H	39.8	-64.5	1.2	7.1	-70.4	80.4	23
5289.0	V	39.6	-64.4	1.2	7.1	-70.3	80.3	23
6170.5	H	42.5	-60.4	1.6	7.7	-66.5	76.5	23
6170.5	V	43.0	-60.4	1.6	7.7	-66.5	76.5	23
7052.0	H	42.2	-62.0	0.2	8.2	-70.0	80.0	23
7052.0	V	42.2	-61.9	0.2	8.2	-69.9	79.9	23
7933.5	H	43.5	-60.3	1.4	8.5	-67.4	77.4	23
7933.5	V	43.6	-60.4	1.4	8.5	-67.5	77.5	23
8815.0	H	42.3	-60.4	2.0	8.8	-67.2	77.2	23
8815.0	V	42.0	-60.3	2.0	8.8	-67.1	77.1	23

Checked By: Richard E. King  
Richard E. King





## DATA SHEET

MANUFACTURER : TRL TECHNOLOGY  
MODEL : BDA8001900-1  
SERIA NO. : 2  
SPECIFICATION : FCC-22 SPURIOUS RADIATED EMISSIONS  
DATE : March 4, 2004  
NOTES : Tx Downlink CDMA @ 881.5MHz  
: TEST DISTANCE IS 3 METERS

FREQUENCY	ANT	METER	MATCHED	ANTENNA	CABLE	ERP		MIN
MHz	POL	READING	SIGNAL	GAIN	FACTOR	TOTAL	ATTN	ATTN
		dBuV	dBm	dB	dB	dB	dB	dB
1763.0	H	48.9	-22.6	-1.3	3.6	-27.5	37.5	23
1763.0	V	52.5	-17.6	-1.3	3.6	-22.5	32.5	23
2644.5	H	45.9	-59.6	-0.1	4.4	-64.1	74.1	23
2644.5	V	45.7	-59.8	-0.1	4.4	-64.3	74.3	23
3526.0	H	45.0	-53.8	0.5	6.1	-59.4	69.4	23
3526.0	V	44.7	-44.9	0.5	6.1	-50.5	60.5	23
4407.0	H	40.6	-64.5	1.3	6.3	-69.5	79.5	23
4407.0	V	40.9	-64.5	1.3	6.3	-69.5	79.5	23
5289.0	H	39.8	-64.5	1.2	7.1	-70.4	80.4	23
5289.0	V	39.6	-64.4	1.2	7.1	-70.3	80.3	23
6170.5	H	42.5	-60.4	1.6	7.7	-66.5	76.5	23
6170.5	V	43.0	-60.4	1.6	7.7	-66.5	76.5	23
7052.0	H	42.2	-62.0	0.2	8.2	-70.0	80.0	23
7052.0	V	42.2	-61.9	0.2	8.2	-69.9	79.9	23
7933.5	H	43.5	-60.3	1.4	8.5	-67.4	77.4	23
7933.5	V	43.6	-60.4	1.4	8.5	-67.5	77.5	23
8815.0	H	42.3	-60.4	2.0	8.8	-67.2	77.2	23
8815.0	V	42.0	-60.3	2.0	8.8	-67.1	77.1	23

Checked By: Richard E. King  
Richard E. King



## DATA SHEET

MANUFACTURER : TRL TECHNOLOGY  
MODEL : BDA8001900-1  
SERIA NO. : 2  
SPECIFICATION : FCC-22 SPURIOUS RADIATED EMISSIONS  
DATE : March 4, 2004  
NOTES : Tx Downlink GSM @ 881.5MHz  
: TEST DISTANCE IS 3 METERS

FREQUENCY	ANT	METER	MATCHED	ANTENNA	CABLE	ERP		MIN
MHz	POL	READING	SIGNAL	GAIN	FACTOR	TOTAL	ATTN	ATTN
		dBuV	dBm	dB	dB	dB	dB	dB
1763.0	H	48.9	-22.6	-1.3	3.6	-27.5	37.5	23
1763.0	V	50.9	-19.0	-1.3	3.6	-23.9	33.9	23
2644.5	H	46.6	-57.7	-0.1	4.4	-62.2	72.2	23
2644.5	V	46.7	-56.8	-0.1	4.4	-61.3	71.3	23
3526.0	H	44.3	-60.5	0.5	6.1	-66.1	76.1	23
3526.0	V	43.6	-60.3	0.5	6.1	-65.9	75.9	23
4407.0	H	40.6	-64.5	1.3	6.3	-69.5	79.5	23
4407.0	V	40.9	-64.5	1.3	6.3	-69.5	79.5	23
5289.0	H	39.8	-64.5	1.2	7.1	-70.4	80.4	23
5289.0	V	39.6	-64.4	1.2	7.1	-70.3	80.3	23
6170.5	H	42.5	-60.4	1.6	7.7	-66.5	76.5	23
6170.5	V	43.0	-60.4	1.6	7.7	-66.5	76.5	23
7052.0	H	42.2	-62.0	0.2	8.2	-70.0	80.0	23
7052.0	V	42.2	-61.9	0.2	8.2	-69.9	79.9	23
7933.5	H	43.5	-60.3	1.4	8.5	-67.4	77.4	23
7933.5	V	43.6	-60.4	1.4	8.5	-67.5	77.5	23
8815.0	H	42.3	-60.4	2.0	8.8	-67.2	77.2	23
8815.0	V	42.0	-60.3	2.0	8.8	-67.1	77.1	23

Checked By: Richard E. King  
Richard E. King