

Specification

- Power input: 12 - 30VDC (Suitable for all kinds of vehicle)
- Frequency range: 88.0MHz - 99.9MHz, fixed channel every 0.1MHz
- Number of Channel: 120
- Number of Memory: 10
- Signal processing: FM modulation with wired transmission

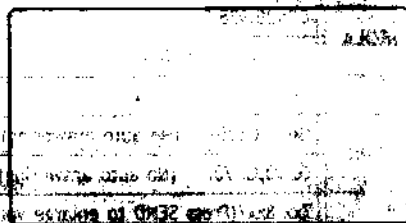
D I G I T A L C A R S T E R E O

HandsFree

WAC2200

Warranty

1. One-year warranty for normal operation or no on purpose destroys is performed.
2. We are not held liable for any damage or injury from misuse or abuse of this product.
3. *Warning : No warranty will be provided if backside label is detached or broken.*



Users Manual

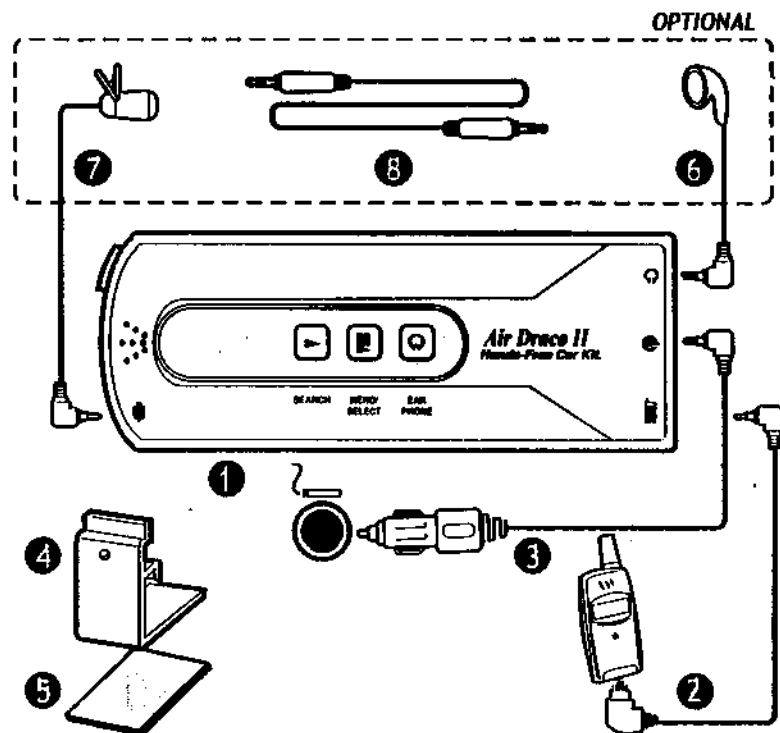
Introduction

CONGRATULATIONS! You have just bought a most sophisticated Digital car stereo hands-free kit for your cellular phone for safety driving purpose. This kit gives you complete freedom to enjoy your communication and better sound quality through the car stereo systems, without lousy cables and customize work, and easy to install and operate by yourself . To ensure the best performance of your kit, please read this document carefully.

Features

- * Automatically answering to incoming calls to *ensure concentrated in safety driving.*
- * Listen to calls from car stereo with *better sound quality*, convenient, and save money.
- * Enjoy free and comfortable *two-way* simultaneous communications.
- * No lousy wiring, *no customize works required*, and installs and operates by yourself.
- * *120 frequency channels* for free selection to avoid strong station interference.
- * *10 pre-select channels memory* for easy frequency management and switching.
- * *Last frequency memory*, convenient to daily use.
- * Accommodating any vehicles, car stereos, and cellular phone models.
- * Suitable for all kinds of vehicle no matter *12V or 24V.*
- * Interchangeable phone cord *available for most cellular phone models.*
- * Toggle switched external earphone for *privacy communication.*
- * *Elegant design* to promote your beloved car.
- * Can *serve as an audio transmitter* of any in-car entertainment or audio devices.

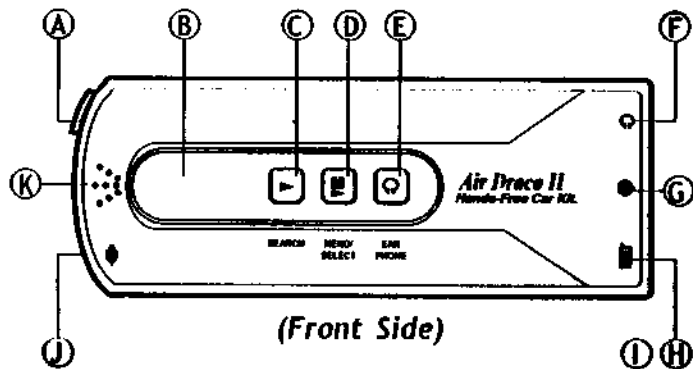
What is included?



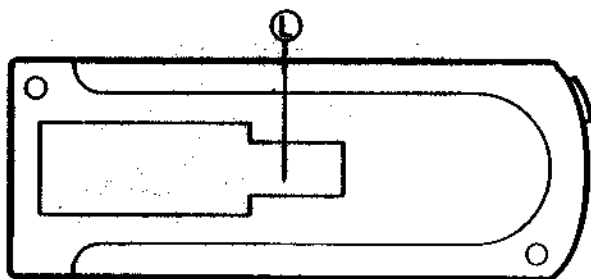
1. Main Kit Unit
2. Cellular Phone Cord
(for specified handset model)
3. Power Cord with cigarette lighter adapter
4. Safety Clip
5. Velcro
6. External Earphone Cable (optional)
7. External Microphone Cable (optional)
8. 3.5-to-3.5 mm Audio Cable (optional)

Explanation of controls

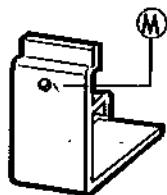
Main Kit Unit



(Front Side)



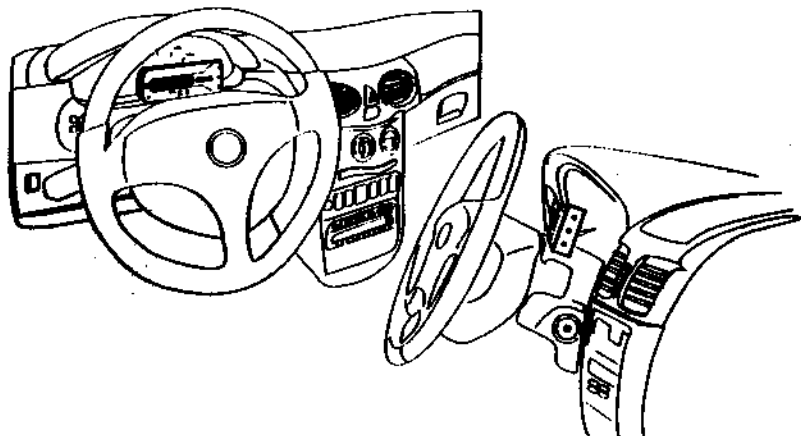
(Back Side)



- A. **Level Select Switch**, to match input audio signal level from handset for transmission.
- B. **LED Readout**, 3-digit 7-segment readout to indicate output frequency of the Kit.
- C. **Frequency Search Button**, to scan the available frequency.
- D. **Frequency Memo/Select Button**, to memorize selected frequency or to select stored frequency.
- E. **External Earphone Switch Button**, to switch output of incoming calls from car stereo speakers to external earphone and vice versa.
- F. **External Earphone Socket**, to connect with external earphone if necessary.
- G. **DC Input Socket**, to plug Power Cord to power the Main Kit Unit.
- H. **Phone Cord Connector Socket**, to plug Phone Cord to connect with specified handset.
- I. **Audio Cable Socket** (optional), same with Phone Cord Connector Socket, to connect with audio devices output such as DVD, VCD, game machine, CD player, Walkman, TV and etc. to play their sound back.
- J. **External Microphone Socket**, to connect with external microphone if necessary.
- K. **Built-in Microphone**, to pick up the voice of caller for transmission.
- L. **Clip Slot**, to lock Safety Clip to the Main Kit Unit.
- M. **Safety Clip**, to lock into Clip Slot for Main Kit Unit fixing.

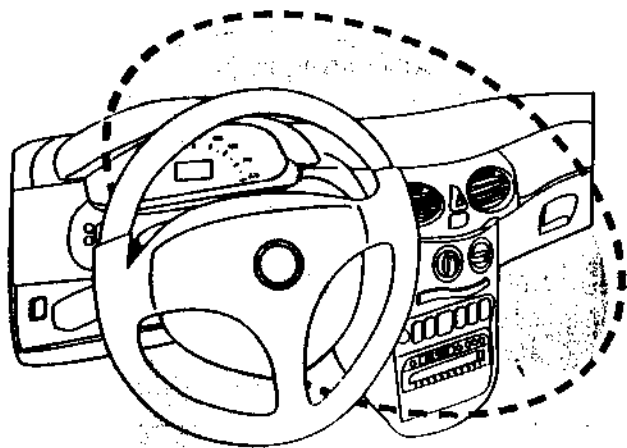
Main Kit Unit Fixing

1) Find a proper place



On the top of steering shaft cover, which is in the rear of steering wheel and in front of instrument panel.

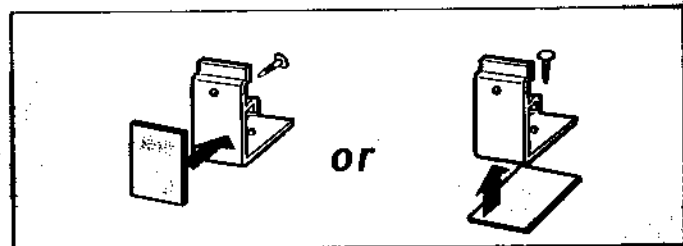
or



The nearby area where is very close to steering wheel.

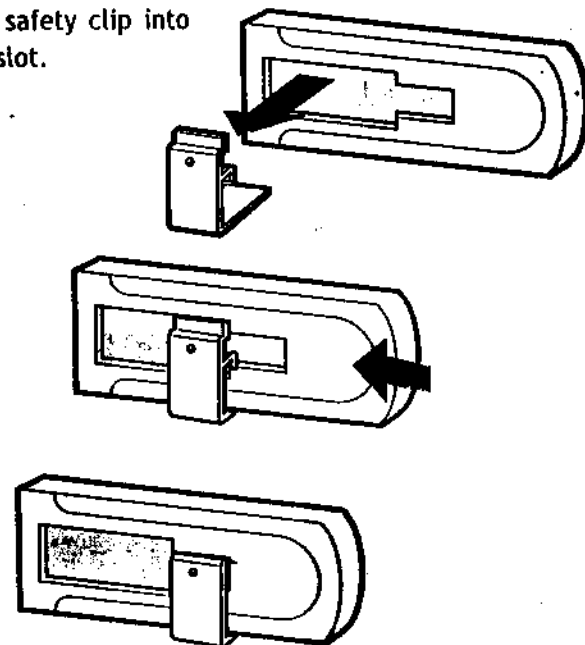
6

2) Fixing (with velcro or screw)



Fix safety clip on the place chose at (1).

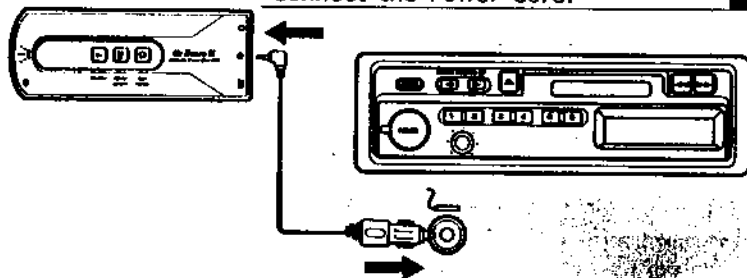
Lock the safety clip into the clip slot.



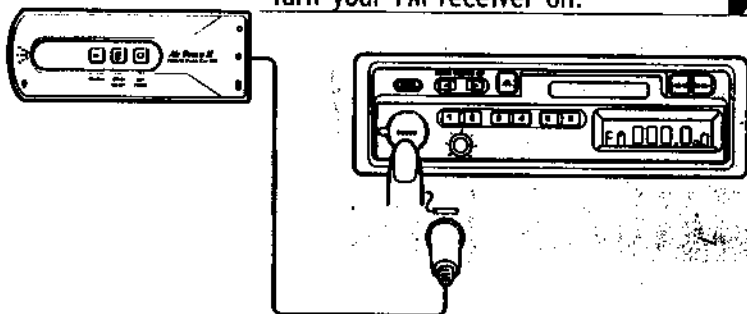
7

Installation-Normal

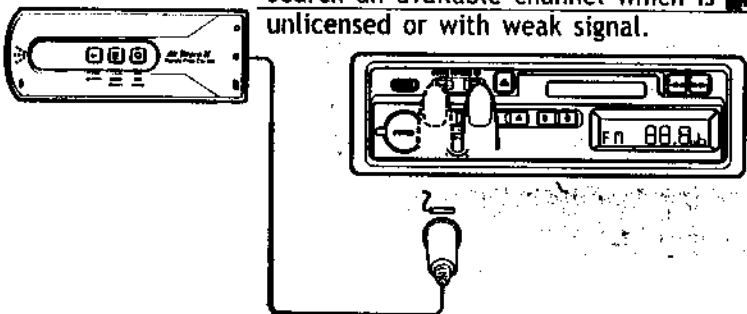
Connect the Power Cord.



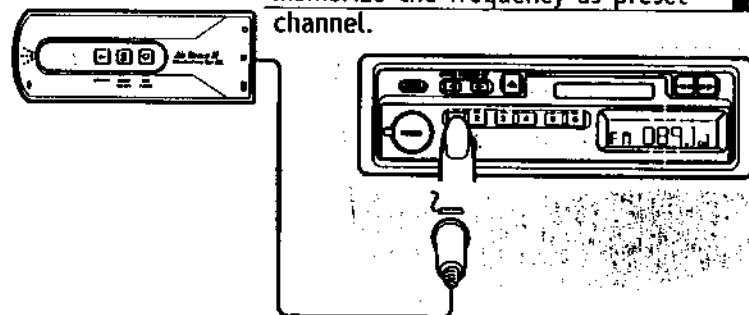
Turn your FM receiver on.



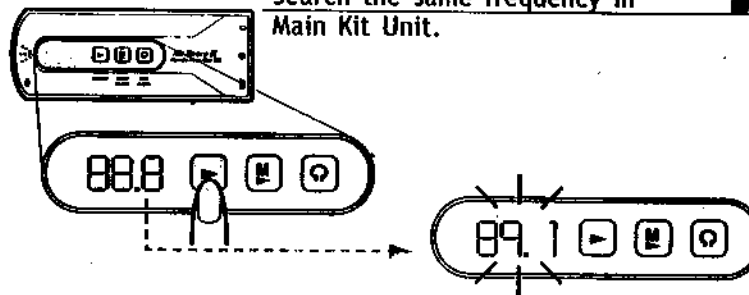
Search an available channel which is
unlicensed or with weak signal.



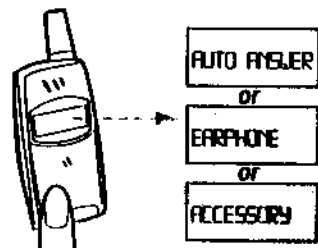
(if necessary)
Memorize the frequency as preset
channel.



Search the same frequency in
Main Kit Unit.



Set up your cellular phone handset
at "Auto answer" state.



Installation - With Memory

(Ex: FM 89.1 as memory Nr.0)

<<See P.8-9 step 1 to 4.>>

Search the same frequency

in Main Kit Unit.



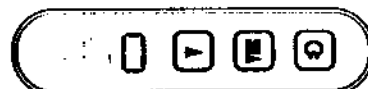
Shortly and repeatedly.



To the first memory location "0".



Shortly and repeatedly.



Memorize the selected frequency.



For couple of seconds.

flash



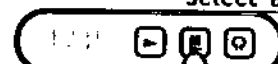
Repeat the steps at most 10 memories.



Update Stored Frequency

(Ex: Update memory Nr.3 from 88.7 to 94.3)

Select a new selected location.



Move to a new selected frequency.



Shortly and repeatedly.

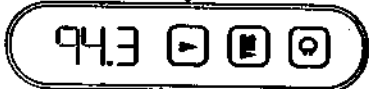


Memorize the selected frequency.



For couple of seconds.

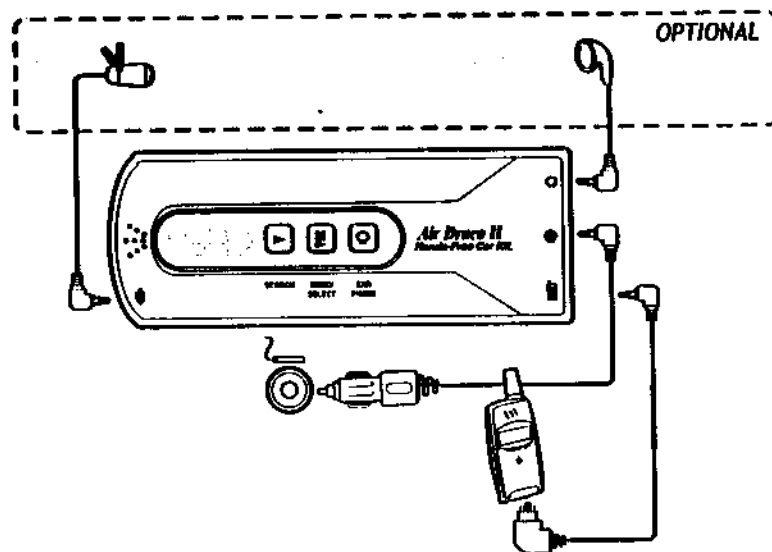
flash



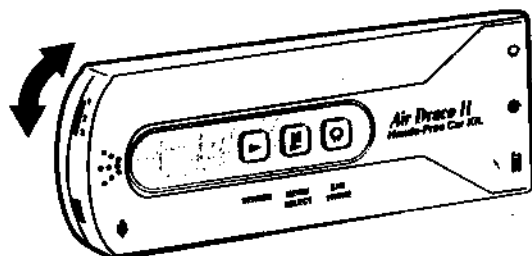
Operation

1) Get Started

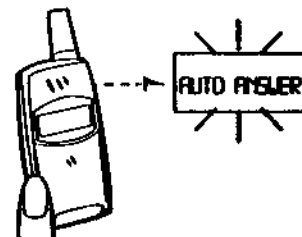
Connecting



Adjust Level Select Switch
(See page 17)



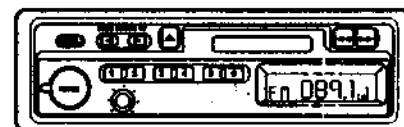
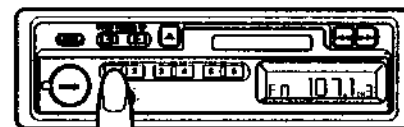
2) Answer incoming calls



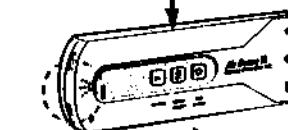
Q: car stereo FM receiver is right at the preset channel?

NO

Turn to preset channel

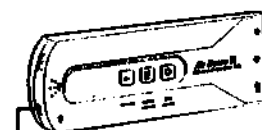


YES



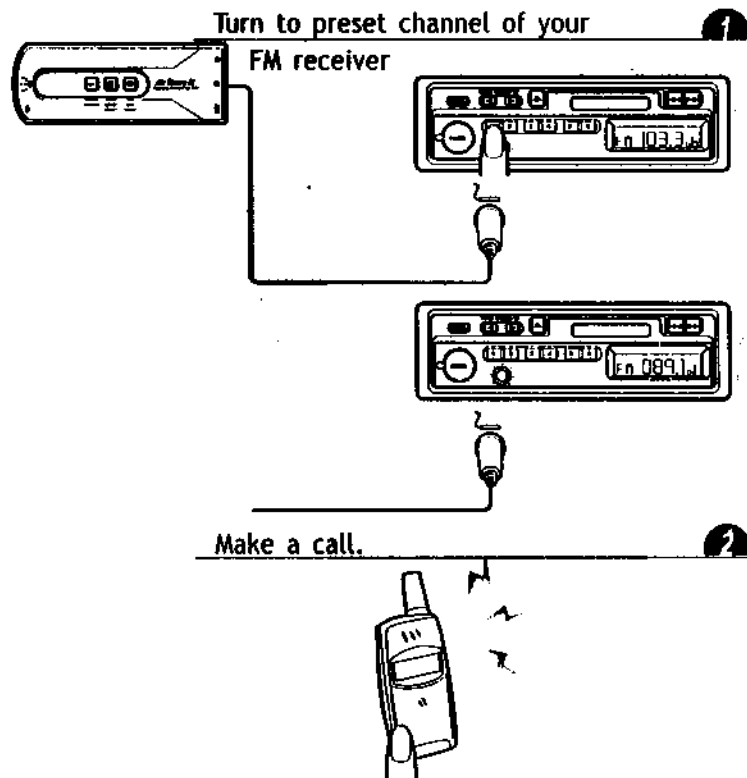
Built-in microphone.

or



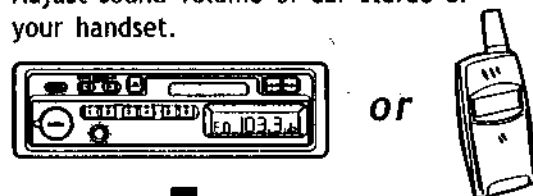
External microphone.

3) Dial a call out

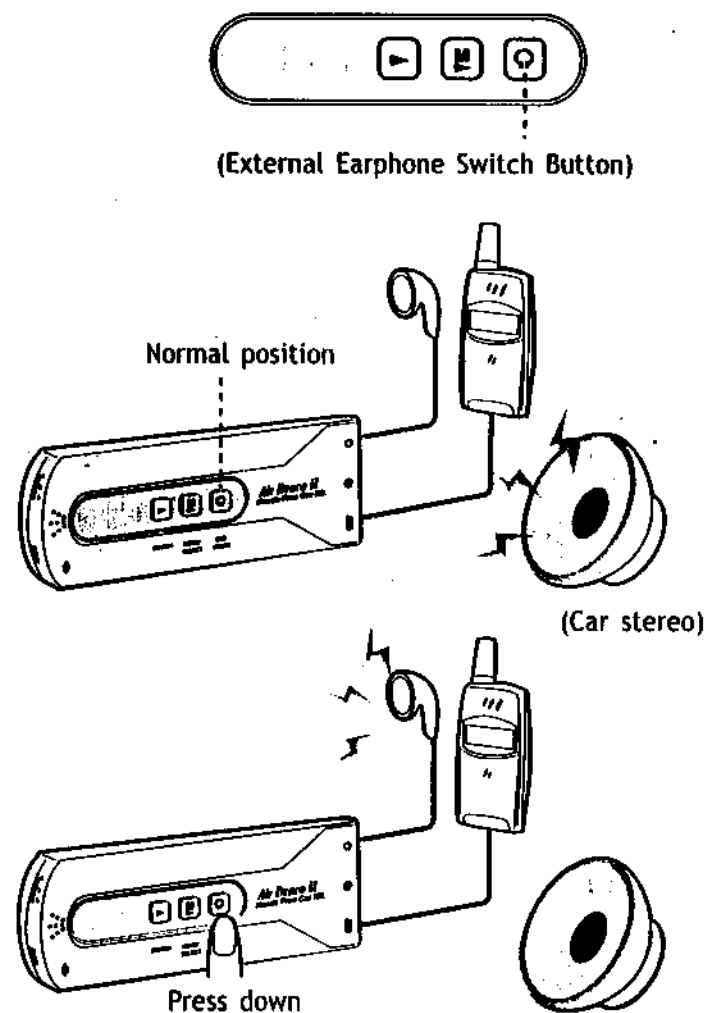


4) Once a serious echo happens

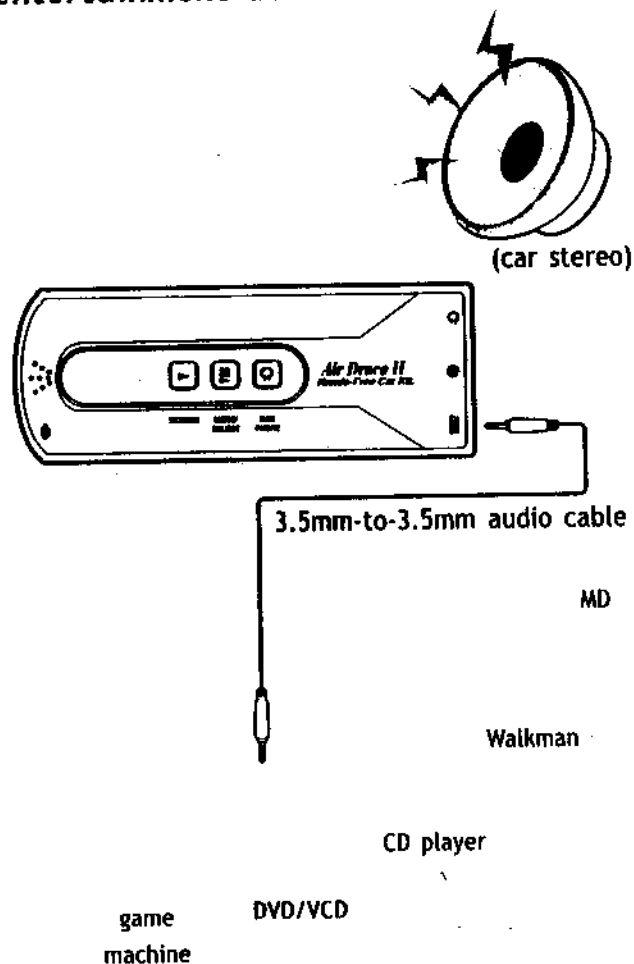
Adjust sound volume of car stereo or your handset.



5) Privacy communication



6) Audio transmitter of in-car entertainment device



Positioning of Level Switch

| Maker | Available Cellular Phone Models | Level |
|--|--|-------|
| ACER | G530,G630/ | 1 |
| ALCATEL | One Touch Easy, Pro, Club/ | 1 |
| | One Touch Easy DB, 221/ | 1 |
| ERICSSON | 6xx,7xx,8xx/ T10,A1028,T18/ | 1 |
| MOTOROLA | V3688/ L2000,LF2000/ Star Tac(AMPS)/ 8700(CDMA)/ | 1 |
| | M3188,M30,2088/ | 1 |
| NEC | DB2000/ | 1 |
| NOKIA | 21xx/ | 1 |
| | 32xx,82xx/ | 1 |
| | 51xx,61xx/ | 1 |
| | 88xx/ | 1 |
| SAMSUNG | SGH600/ | 1 |
| SIEMENS | C25/ | 1 |
| If serious echo and noise happened to LEVEL1 or LEVEL 3, switch to LEVEL 2 for better sound quality. | | 2 |
| ERICSSON | 2xx,3xx/ | 3 |
| MOTOROLA | CD920,928,930,938/ StarTac X, StarTac 130/ | 3 |
| | 8700,8900,PCN780/ | 3 |
| NOKIA | 81xx,38xx,31xx,16xx | 3 |
| PANASONIC | G600,G520/ (No auto answering) | 3 |
| | GD90,GD70/ (No auto answering) | 3 |
| SAGEM | 7xx,8xx/(Press SEND to enlarge volume.) | 3 |

Notice : The changes or modifications not expressly approved by the party responsible for compliance could void the user's authority to operate the equipment.