

EXHIBIT V

User's Manual

User's Manual from page 17 to 41.

R.A.T.TM CONTROL



USER MANUAL

Copyright © 1998 Armadillo Multimedia Enterprise Ltd. All rights reserved. R.A.T., Restrictive Access Technology, Armadillo and its logo are either registered trademarks or trademarks of Armadillo Multimedia Enterprise Ltd. USA Patent pending.

The R.A.T.TM Control hardware and software described in this manual is furnished under a license agreement. The product may be used only in accordance with the terms of the agreement. The information in this document is subject to change without notice and does not represent a commitment on the part of Armadillo Multimedia Enterprise Ltd. No part of this product, including its publication and software, may be reproduced or transmitted in any form, by any means or for any purpose without the written permission from Armadillo Multimedia Enterprise Ltd.

Windows is a registered trademark of Microsoft Corporation. Pentium is a registered trademark of Intel Corporation. All other product names are registered trademarks or trademarks of their respective owners.

System Requirements

- PC compatible system with Windows® 95 or Windows® 98
- Pentium® 133 MHz processor or above
- 16MB RAM or more
- 4x Speed CD-ROM Drive or faster
- Internet Explorer 4.0 or later releases
- Netscape 4.0 or later releases

Package Contents

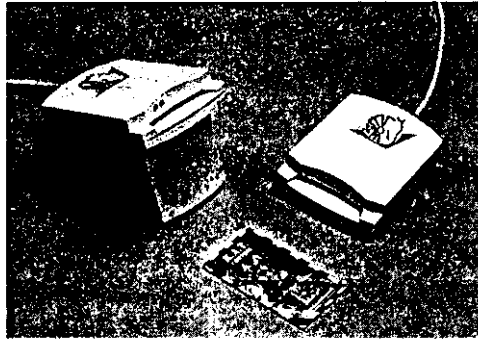
Please check that your R.A.T.TM Control carton contains the following items:

- Smart Card reader
- Smart Card
- R.A.T. Control CD-ROM
- User manual
- Power adaptor
- Registration card
- Replacement form

TABLE OF CONTENTS

| | | |
|-----|---|-------|
| 1 | Specification..... | 1 |
| 2 | Foreword..... | 2 |
| 3 | Install & Uninstall..... | 3,4 |
| 4 | Getting Started..... | 5 |
| 5 | Features | |
| 5.1 | Browsing..... | 6 |
| 5.2 | Lock/Unlock System..... | 6 |
| 5.3 | Change Password..... | 7 |
| 5.4 | Add Sites..... | 7 |
| 5.5 | Delete Sites..... | 8 |
| 5.6 | Edit Sites..... | 8 |
| 5.7 | Unlock/Lock Newsgroup Access..... | 9 |
| 6 | Replacement or Repair | |
| 6.1 | Lost Smart Card..... | 10 |
| 6.2 | Lost Password..... | 10 |
| 6.3 | Damaged or Lost CD-ROM..... | 10 |
| 6.4 | Damaged Smart Card Reader..... | 11 |
| 7 | FAQs | |
| 7.1 | About Smart Cards..... | 12 |
| 7.2 | About R.A.T. TM Control..... | 12,13 |
| 8 | Trouble Shooting | |
| 8.1 | Installation..... | 14 |
| 8.2 | Navigation..... | 15,16 |
| 8.3 | List Editing..... | 16 |
| 8.4 | System Not Responding..... | 17 |
| 8.5 | Cannot Unlock System..... | 18 |
| 9 | Site Selection..... | 19,20 |
| 10 | Acknowledgements..... | 21,22 |

1 Specifications



Smart Card Reader Specifications:

Dimensions: 119.4mm(L) x 83.8mm(W) x 33.0mm (H)

Temperature: 5 to 55 Celsius

Standard: FCC & CE approved

External Power Adaptor Specifications:

For U.S.:

Voltage: 120V AC, 60Hz.

Power Dissipation: 9V, 500mA.

For Australia:

Voltage: 240V AC, 50Hz

Power Dissipation: 9V, 500mA

For Europe:

Voltage: 230V AC, 50Hz

Power Dissipation: 9V, 500mA

2 Foreword

Thank you for buying **R.A.T.™ Control** - the state-of-the-art Internet security system that you can rely on.

R.A.T.™ Control is an easy to use, yet extremely powerful lockout device. It provides a seamless, secure shield against inappropriate contents and keeps your private cyberspace safe. With the Smart Card key and password, you have the liberty of locking or unlocking the system, customizing the appropriate site list, and disabling newsgroup access.

Realizing the inadequacies of other parental control software in the market, Armadillo addresses the needs of concerned parents and adults with a positive solution - **R.A.T.™ Control** for children's online safety. We employ advanced Smart Card technology in a consumer product at an affordable price.

All of us at Armadillo wish that you and your family's Internet experiences are always fun and rewarding. We appreciate your feedback for future enhancements. Thank you for your support and enthusiasm.



3 Install & Uninstall

INSTALL

Step 1: Registration Card

***Note:** To protect the rights and privacy of all R.A.T.TM Control users, Armadillo will not replace lost Smart Cards or passwords to non-registered persons. Armadillo will protect the confidentiality of all personal information you provided.

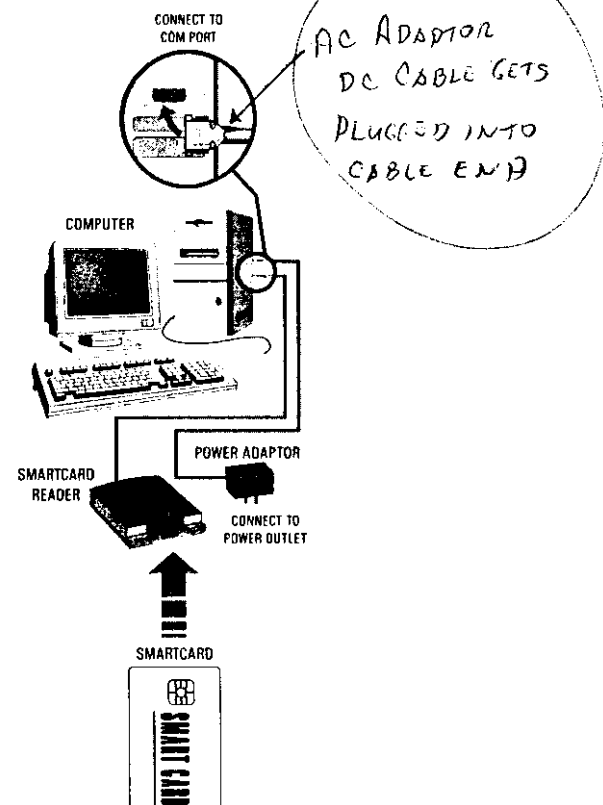
1. Fill out the 2-part registration card
2. Attach a serial number label at the bottom of each part
3. Sign the Armadillo's Copy, then mail it along with a copy of a dated proof of purchase to the Armadillo Technical Support in your area
4. Keep the Customer's Copy in a safe place

Step 2: Hardware setup

Important: Before installation, exit all programs, shut down computer and power off.

1. Plug one end of reader cable to the **COM PORT** at the back of your computer
2. Plug adaptor cable into the reader
3. Plug adaptor into power outlet

***Note:** You have the options of the Smart Card reader with or without the base unit. Simply remove the base if you find this addition undesirable.



3 Install & Uninstall

Step 3: Software installation

1. Power "ON" computer, start Windows
2. Insert **R.A.T.™ Control** CD into CD ROM drive
3. The setup program will run automatically
4. If the "Auto-Run" function is disabled on your computer, proceed to "My Computer", find the CD-Drive and double-click on "**Setup.exe**" to run the setup program
5. Follow onscreen instructions to complete installation

Uninstall Program

1. Unlock system
2. Go to "Programs" folder in the "Start" menu, then run "Uninstall RAT.exe" ;
3. Insert the Smart Card and enter password
4. Click "OK", then the computer will reboot automatically

**Note: When you re-install the R.A.T. Control program on your computer, use the last password recorded on the Smart Card (i.e. the same password that you use for uninstallation).*

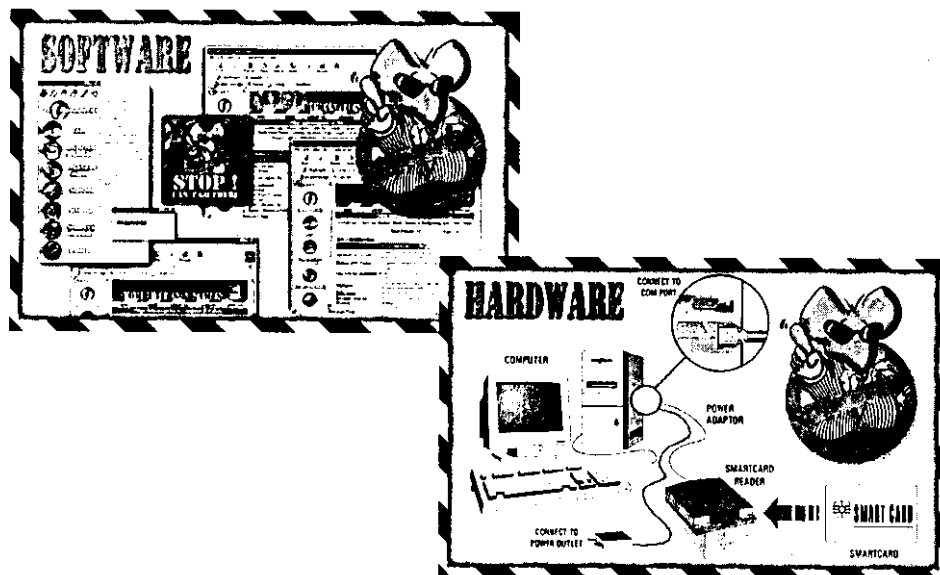


4 Getting Started

Start your browser (Netscape or Internet Explorer) and Internet connection. The **R.A.T.™ Control** customized icons will appear on the browser. As security measures, Armadillo strongly recommends you to:

- Change the password immediately (refer to “**Change Password**”) since the password that we provide is a generic one.
- Memorize the new password.
- If you need to write down the new password, keep it in a safe place that is out of reach of others.
- DO NOT keep the password and Smart Card together.
- Each time you unlock **R.A.T.™ Control**, remember to RE-LOCK the system (click on the “**Lock**” icon) when you are finished. **R.A.T.™ Control** will not lock the system without your command.

**Note: R.A.T.™ Control only supports Netscape and Internet Explorer. It is advisable NOT to have other browser programs on your computer.*

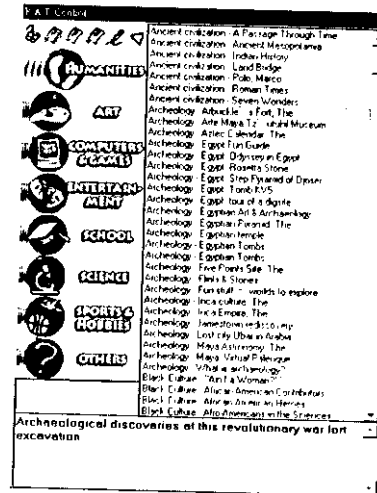


5 Features

5.1 Browsing

1. Click on the category icon of your choice
2. Site list under this category will pop up to the right of the icon
3. Double-click on site name to access this site

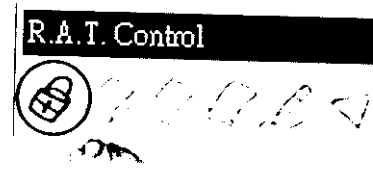
**Note: When R.A.T.™ Control is activated (locked), you can only open one browser at a time*



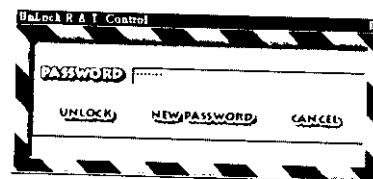
5.2 Lock/Unlock System

To Unlock

1. Insert Smart Card into the reader
2. Click "Lock" icon at the upper left corner
3. Enter password on the pop-up window, and click "OK"
4. Now the system is Unlocked (icon will change to an open position)
5. You can remove the Smart Card once the password is verified
6. Click the "Lock" icon to re-lock the system when you are finished



"Unlock" icon



**Note: To edit, add or delete websites, or to disable newsgroups, R.A.T.™ Control MUST BE UNLOCKED.*

To Lock

1. Click "Lock" icon on upper left corner (icon will return to a locked position)



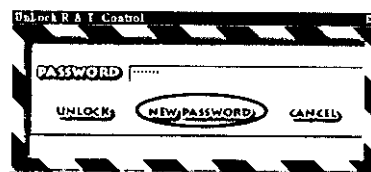
"lock" icon

5 Features

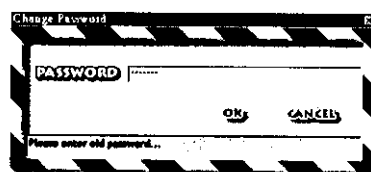
5.3 Change Password

1. Insert Smart Card into the reader
2. Click "Unlock" icon
3. Enter password, then click "Change Password" button on dialogue box
4. Type in new password, click "OK"
5. Re-type new password to verify, click "OK" again

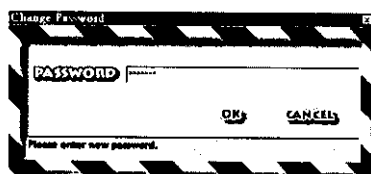
**Note: Password must be 8 characters (numbers or letters), with no space in-between.*



"Unlock" icon



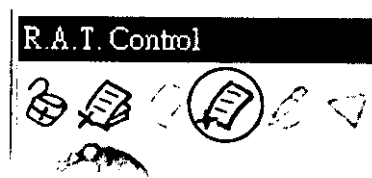
Type in old password



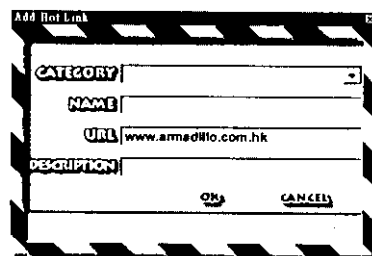
Type in new password

5.4 Add Sites

1. Unlock system (insert Smart Card, click "Lock" icon, enter password)
2. Use browser to access the website you want to add
3. Click "Add" icon
4. On the pop-up Window, select the category to add onto, give the site a name, click OK



"Add" icon

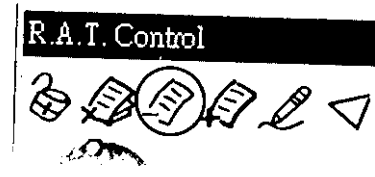


Pop-up Window

5 Features

5.5 Delete Sites

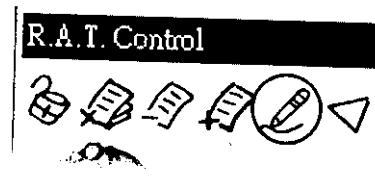
1. Unlock system (insert Smart Card, click "**Lock**" icon, enter password)
2. Go to the approved list, find & select the site to be deleted
3. Then click on "**Delete**" icon on the pop-up Window, click "**Delete**" to confirm.



"Delete" icon

5.6 Edit Sites

1. Unlock system (insert Smart Card, click "**Lock**" icon, enter password)
2. Go to the approved list, find and select the site to be edited
3. Click on "**Edit**" icon
4. Change name, description, or site category on the pop-up Window.



"Edit" icon

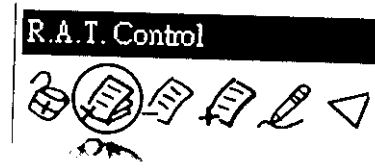
 A screenshot of a dialog box titled 'Add/Edit Link'. It has a title bar with the text 'Add/Edit Link'. The dialog box contains four input fields: 'CATEGORY' (with a dropdown arrow), 'NAME', 'URL' (containing 'www.armadillo.com.hk'), and 'DESCRIPTION'. At the bottom right, there are two buttons: 'OK' and 'CANCEL'.

**Note: The site name cannot contain any apostrophe sign.*

5 Features

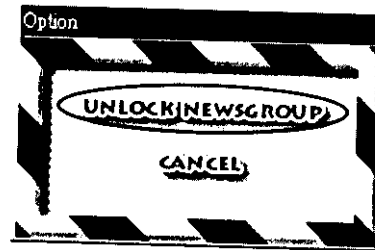
5.7 Unlock/Lock Newsgroup Access

1. Unlock system (insert Smart Card, click "Lock" icon, enter password)

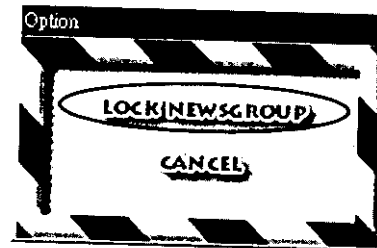


"Newsgroup" icon

2. Click "Newsgroup" icon
3. UNLOCK: on the Newsgroup pop-up Window, choose "Unlock" (Observe the mark on the Newsgroup icon – now newsgroup access is enabled)



4. LOCK: on the Newsgroup pop-up Window, choose "Lock" (Observe the X mark on the newsgroup icon – now newsgroup access is disabled)



**Note: Newsgroup access is locked at default (i.e., locked when you start running R.A.T.™ Control)*

6 Replacement or Repair

*Note: To protect the rights and privacy of all **R.A.T.™ Control** users, Armadillo will not replace lost Smart Cards or passwords to non-registered persons. You **MUST** register with Armadillo by returning the completed and signed Registration Card immediately after installation.

You can find the Replacement Form:

- in this **R.A.T.™ Control** package
- on Armadillo's **R.A.T.™ Control** homepage
<http://www.armadillo.com.hk/maincatalog.html>

6.1 Lost Smart Card

- Fill out the "**Replacement Form**" in the User Manual
- Mail the following items to the Armadillo Technical Support:
- the completed and signed Replacement Form
- a copy of the Customer's Copy Registration Card
- a check/money order of the correct amount

6.2 Lost Password

- Fill out the "**Replacement Form**" in the User Manual
- Mail the following items to the Armadillo Technical Support:
- the completed and signed Replacement Form
- a copy of the Customer's Copy Registration Card
- a check/money order of the correct amount
- your **R.A.T.™ Control** Smart Card
- We will reset your Smart Card and issue you a new password

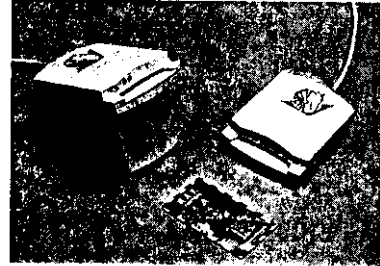
6.3 Damaged or Lost CD-ROM

- Fill out the "**Replacement Form**" at the User Manual, or the template file in **R.A.T.™ Control** CD-ROM.
- Mail the following items to the Armadillo Technical Support:
- the completed and signed Replacement Form
- a copy of the Customer's Copy Registration Card
- a check/money order of the correct amount

6 Replacement or Repair

6.4 Damaged Smart Card Reader

- When the reader is not responding, call or e-mail the Armadillo Technical Support and discuss the problem with one of our service representatives.
- If the reader needs to be replaced or repaired, send the following items to the Armadillo Technical Support:
- the completed and signed Replacement Form
- a copy of the Customer's copy Registration Card
- a check of the appropriate amount
- the damaged Smart Card reader



Cost

Refer to the **R.A.T.™ Control** homepage
<http://www.armadillo.com.hk/maincatalog.html>
or contact the Armadillo Technical Support.

7 FAQs

7.1 About Smart Cards

Q: What is a Smart Card?

A Smart Card resembles a credit card in appearance, with a microprocessor chip embedded within the body to store information and perform multiple functions.

Q: Where shall I keep the Smart Card?

Keep your Smart Card in a safe place, treat it like a credit cards or driver's license.

Q: How does the Smart Card work in the R.A.T.TM Control system?

In R.A.T.TM Control, used with the correct password, the Smart Card acts as a secured ID key that allows you to unlock the system.

Q: What is a Smart Card reader? How does it work?

The R.A.T.TM Control Smart Card reader is like the keyhole in a lock -- an electronic device that reads the digital information on the Smart Card. When the reader reads the matching Smart Card key and password, it will send signals to the R.A.T.TM Control software on your PC to unlock the security system.

7.2 About R.A.T.TM Control

Q: How does R.A.T.TM Control work?

R.A.T.TM Control is a lockout system on the gateway to the Internet. When locked, R.A.T.TM Control maintains a limited Internet access to the list of designated sites set by the key keeper. The other users cannot navigate beyond the predetermined parameter.

R.A.T.TM Control also provides the flexibility of exploring the whole Internet by unlocking the system with the Smart Card key and password.

Q: How does R.A.T.TM Control prevent someone from using a different Smart Card to unlock the system?

Each Smart Card is programmed with a unique digital ID for authentication. Even with the correct password, the reader will not allow a different Smart Card to unlock the system.

7 FAQs

Q: What happens if someone tries to access an unauthorized site?

A warning sign will appear on the screen and bring you back to the predetermined homepage.

Q: Is it possible to establish a link from an approved site to a non-approved site?

R.A.T.™ Control filters all the sites by their titles. If these titles match any keyword stored in the **R.A.T.™ Control** database, then you can access them. Otherwise, no.

Q: What happens if someone tries to tamper with R.A.T.™ Control?

R.A.T.™ Control has a self-monitoring security system. When it detects attempts to delete or tamper with the software, it will lock up your PC. Further attempts will result in a PC system shut down.

Q: How do you re-activate the computer after a shut down?

If the shut down is due to the tampering of **R.A.T.™ Control**, you need to re-install the **R.A.T.™ Control** software, using the Smart Card key, password and the **R.A.T.™ Control** CD-ROM.

If your system shut down is caused by other applications on your PC, it will not affect the running of **R.A.T.™ Control**. Simply re-start your computer as you normally do.

Q: How do you gain access to the rest of the Internet with R.A.T.™ Control installed on the PC?

With the Smart Card key and password, you can unlock **R.A.T.™ Control** and surf the rest of the Internet. In addition, you can add your own favorite sites to your customized list.

8 Trouble Shooting

8.1 Installation

| | |
|---|--|
| <p>Setup program does not run automatically</p> | <ul style="list-style-type: none"> • Go to "My Computer", find the CD drive and double-click on "Setup.exe" to run program. • If CD drive doesn't detect any content, check if the CD is placed properly in the drive. Insert another CD to test if the CD drive is functioning. • If you cannot find the CD drive in "My Computer", refer to your computer manual to check if your CD drive is properly installed. |
| <p>Insufficient Hard Disk space</p> | <ul style="list-style-type: none"> • Free space in your hard disk by emptying trash from the recycle bin. (Note: double check files in bin to prevent loss of important documents.) |
| <p>No R.A.T.TM Control icons on the browser</p> | <ul style="list-style-type: none"> • Check the version of Netscape or Internet Explorer that you are currently using. R.A.T.TM Control does not support versions prior to 4.0. To resolve, download a free version of the browser via the Internet. Then re-install the R.A.T.TM Control program. • If the browser meets our specifications, but you do not see the R.A.T.TM Control icons, it means that the program is not properly installed. Insert R.A.T.TM Control CD-ROM and install the program again. |

8 Trouble Shooting

8.2 Navigation

| | |
|--|---|
| Able to access non-approved site without Smart Card & password | <ul style="list-style-type: none"> • System is unlocked. Click the “Lock” icon on the browser to lock. |
| Cannot access a site | <ul style="list-style-type: none"> • This site is not on the approved list, unlock system to access. |
| Cannot access a site on the approved list | <ul style="list-style-type: none"> • This site may not exist anymore. • Server of this site is currently busy or down. |
| Keep returning to the homepage | <ul style="list-style-type: none"> • Sites that you’re accessing are not on the approved list. |
| Cannot open a new browser / a new window on the browser | <ul style="list-style-type: none"> • This is a security measure of R.A.T.™ Control. The system must be unlocked to open a second browser/window. |
| Cannot access a sub-topic page on a site | <ul style="list-style-type: none"> • The sub-topic page is on a pop-up window. The R.A.T.™ Control interface will not allow access. • The sub-topic page uses a different domain name or is a link to a non-approved site. |
| Cannot access newsgroup | <ul style="list-style-type: none"> • Newsgroup access is disabled. • Unlock system to access, or to change the “Newsgroup” setting. |

8 Trouble Shooting

8.2 Navigation

| | |
|---|--|
| Cannot open <ul style="list-style-type: none"> • Composer on Netscape • Outlook or Outlook Express | <ul style="list-style-type: none"> • These are security measures of R.A.T.TM Control. • Unlock system to utilize Composer. • Use other e-mail programs, such as Eudora or cc:mail as your default e-mail program. • To use Outlook/Outlook Express, you must unlock the newsgroup access. |
|---|--|

8.3 List Editing

| | |
|--------------------------------|--|
| Cannot add a site | <ul style="list-style-type: none"> • The system is locked, unlock to add site. • The domain of this site already exists on the approved list. |
| Cannot access newsgroup | <ul style="list-style-type: none"> • The system is locked, unlock to delete site. |
| Cannot edit a site | <ul style="list-style-type: none"> • The system is locked, unlock to edit site. |
| Site name too long | <ul style="list-style-type: none"> • The name must be 40 character spaces or less. • Name cannot contain any apostrophe sign. • Details of site can be placed in the "description" section. |

8 Trouble Shooting

8.4 System Not Responding

| | |
|---|--|
| Computer locked | <ul style="list-style-type: none"> • R.A.T.™ Control has been tampered with. Type in password and follow onscreen instructions to re-start or to re-install program. |
| Computer locked by other application errors | <ul style="list-style-type: none"> • Press Alt-Delete-Ctrl to re-start computer, R.A.T.™ Control will not be affected. |

8.5 Cannot Unlock System

**Note: If you cannot unlock the system, the problem could come from several areas as follows:*

| | |
|------------------------------------|--|
| Password | <ul style="list-style-type: none"> • Password is incorrect. |
| Smart Card reader power connection | <ul style="list-style-type: none"> • The Smart Card must be properly inserted into the reader. • When inserting card, observe that the light on the reader should blink once. • If the green light does not blink, check the power connection of the reader. |
| Reader-computer connection | <ul style="list-style-type: none"> • If the reader is properly plugged in, after you enter password and click on the "Unlock" icon, observe that the light on the reader should blink (i.e., the reader is reading your command). • If the light does not blink, check the connection between the reader and computer. • Make sure that the Smart card is inserted the right side up. |

8 Trouble Shooting

8.5 Cannot Unlock System

**Note: If you cannot unlock the system, the problem could come from several areas as follows:*

| | |
|-------------------------|---|
| Defective reader | <ul style="list-style-type: none">• Check all of the above connections.• If the reader is still not responding, it may be defective. Call the Armadillo Service Center for further assistance. |
|-------------------------|---|

9 Site Selection

R.A.T.™ Control is designed as a lockout system for restricted access on the Internet. However, Armadillo believes that technology alone is not enough, parental guidance and supervision is most crucial for children's online safety. The Internet is a vast collection of interconnected documents around the world, censorship is nearly impossible and against the original intent of the Internet. Since we cannot eliminate inappropriate material that is sexual, hateful, and violent in nature from the Internet, children need to be taught the basic rules of online safety, just like in any other environment.

There are numerous resources on the Internet, like government or non-profit organizations, from which you can learn about finding good sites and helping children to be Net-smart and safe.

Sites in the **R.A.T.™ Control** suggested list were selected under close scrutiny of the Armadillo staff. We believe that these sites contain educational and interesting material. Yet you might want to inspect them for any content that does not suit your taste or beliefs.

When you add sites to your **R.A.T.™ Control** list, there are certain areas we would like to bring your attention to.

1. Chats & Newsgroups:

Statistics show that the greatest risk for a child being online is that he/she will encounter people, who are mean or obnoxious, in chat areas and newsgroups. It is advisable to examine the content of chat rooms and newsgroups carefully.

2. Search Engines:

Search engines all have chat rooms, bulletin boards and newsgroups. Depending on the administrative style and policy of the specific search engine, the quality of content in these sections varies.

3. Newspapers:

Newspaper sites may contain graphic crime reports on sex, hate, and violence that are disturbing to children, sometimes even to adults.

9 Site Selection

4. ISP homepages

Most Internet service providers give their subscribers memory space to create personal homepages. These personal pages are not always regulated, so be cautious when adding ISP pages to your list.

**Note: The content of this section is the personal view of the author. It does not represent opinion of Armadillo Multimedia Enterprise Ltd.*

This equipment has been tested and found to comply with the limits for a Class B digital device, pursuant to part 15 of the FCC Rules. These limits are designed to provide reasonable protection against harmful interference in a residential installation. This equipment generates, uses and can radiate radio frequency energy and, if not installed and used in accordance with the instructions, may cause harmful interference to radio communications. However, there is no guarantee that interference will not occur in a particular installation. If this equipment does cause harmful interference to radio or television reception, which can be determined by turning the equipment off and on, the user is encouraged to try to correct the interference by one or more of the following measures:

- *Reorient or relocate the receiving antenna.*
- *Increase the separation between the equipment and receiver.*
- *Connect the equipment into an outlet on a circuit different from that to which the receiver is connected.*
- *Consult the dealer or an experienced radio/TV technician for help.*

FCC Caution: To assure continued compliance, (example - use only shielded interface cables when connecting to computer or peripheral devices). Any changes or modifications not expressly approved by the party responsible for compliance could void the user's authority to operate this equipment.

This device complies with part 15 of the FCC Rules. Operation is subject to the following two conditions: (1) This device may not cause harmful interference, and (2) this device must accept any interference received, including interference that may cause undesired operation.

10 Acknowledgements

Credits

| | |
|---------------------|-----------------------|
| Concept & Producer: | Dr. Phillip Jen |
| Programming: | Stoney Ching-Yu Lai |
| | Ivan Chiu-Wai Choi |
| Graphics & Art: | Anthony Wai-Kai Choi |
| | Stanley Wing-Kin Tang |
| | Johnny Kin-Shing Wong |
| Writer: | Lottie C. Lau |
| Editor: | Irene B. Littig |

Acknowledgements

In creating this product, we in Armadillo would like to express our gratitude to the invaluable assistance from Dr. Jenson C. Jen and the staff of Atmel Asia Ltd. (Beijing & Shanghai). We also wish to express our particular thanks to our Chairman Mr. S.S. Leong for his guidance; and to Mr. Tony Mitchell from Millennium Solutions for his support.

Technical Support

If you have questions about **R.A.T.™ Control**, our Technical Support Department can help.

If your question is not urgent, please e-mail us at enquiry@armadillo.com.hk

If you need to talk to someone immediately, call us:

- In Hong Kong: 2634-1823
Monday through Friday between 9:30 AM and 5:30 PM.
- In Australia: 1-800-680-801
Monday through Friday between 9:00 AM and 4:30 PM.

Online: <http://www.armadillo.com.hk>

E-Mail: enquiry@armadillo.com.hk

Mailing Address:

Hong Kong : Room 718, Tower 1, Grand Central Plaza
138 Shatin Rural Committee Road
Shatin, N.T., Hong Kong
Tel: +852 2634-1823
Fax: +852 2634-1826

Australia: Millennium Solutions
106 Burswood Road
Burswood 6100
Western Australia
Tel: +61 89 472-9000
Fax: +61 89 472-8000