

## User's Manual

TRANSMITTER,KEYLESS ENTRY

Model No.: H7079

There is no User's Manual because this equipment will not be sold to end-user directly.

## OWNER'S MANUAL

### Keyless Entry System Transmitter & Receiver

Model Number : H7079 (Transmitter), H7078 (Receiver)

Operating instructions for this system: Keyless Entry System; will be included in the owner's manual of the vehicle and its contents will be as follow:

#### Function explanation

##### 1. Door lock control

A lock or unlocking state of the doors is remote-controlled by the micro wave sent from the transmitter.

##### 2. Answer back function

The information of lock or unlocking of the doors by the micro wave remote control can be confirmed from the sign of the room lamp and the hazard lamp.

##### 3. Distance of keyless entry operation

It works within approximately 3 meters from the cabin center.

Caution :

The distance of operation will be affected by the electromagnetic circumstance in which this system is located, i.e. in the neighborhood of broadcasting station or power plant.

##### 4. Burglary prevention

If a door is not opened after unlocking by the transmitter, the door is automatically locked 30 seconds later.

##### 5. Safe function

When the starter key has been inserted into the starter switch or the door is opened, keyless entry system does not work.

##### 6. Function to prevent for the starter key from being shut into the cabin

When the starter key has been inserted into the starter switch, the door is not locked for prevent for the starter key from being shut into the cabin.

## 7. Registration function

This keyless entry system can use three transmitters for one receiver. One transmission code is registered by one registration operation. The oldest code is erased by the registration operation.

When a transmitter is newly added, the registration will be made by the following procedure:

### REGISTRATION METHOD

#### 1. REGISTRATION OPERATION START

(STARTER KEY IS PULLED OUT, CONDITION OF ALL DOOR CLOSE.)

#### 2. OPENNING ONLY DRIVER'S SIDE DOOR.

#### 3. IT IS TAKEN ON CONDITION FOR OPERATION SW OF TRANSMITTER THAT WANTS TO REGISTER MAX.10s AFTER IT OPENED DOOR.

(EITHER OF LOCK AND UNLOCK IS POSSIBLE.)

#### 4. STARTER KEY IS PUT IN STARTER SW AND IT IS ON CONDITION OF STARTER SW (M CONTACT), IN CASE OF REGISTRATION LESS THAN 10s AFTER OPENNING DRIVER'S SIDE DOOR.

#### 5. IT IS OFF CONDITION OF STARTER SW (M CONTACT), AND STARTER KEY IS PULLED OUT IN CASE OF REGISTRATION LESS THAN 10s AFTER STARTER SW (M CONTACT) IS ON CONDITION.

#### 6. REPEAT MORE THAN SIX TIMES OF DOOR LOCK ON AND OFF BY DRIVER'S SIDE DOOR SW ON AND OFF LESS THAN 30s FROM M CONTACT OFF CONDITION.

#### 7. TRANSMITTER UNLOCK SW FOR REGISTRATION IS KEEPING ON TILL DOOR LOCK IS OPERATED (MORE THAN 5s) LESS THAN 5s AFTER TWO TIMES OF DOOR LOCK ON AND OFF.

#### 8. REGISTRATION COMPLETION

\*IF THE RKE RECEIVER HAS ANOTHER INPUT DURING A SERIES OF ACTION 1-8, IT RECEASES REGISTRATION MODE.

Caution :

When registering a new transmitter is made for the loss and so on, repeat registration operation three times for deleting the old code.

### The Operation Point

1. Door locking

Push the lock switch on the transmitter.

2. Door unlocking

Push the unlock switch on the transmitter.

Caution :

The micro wave signal sent from the transmitter is exclusive use for each product.

### Cautions on Handling

1. The transmitter must keep dry.

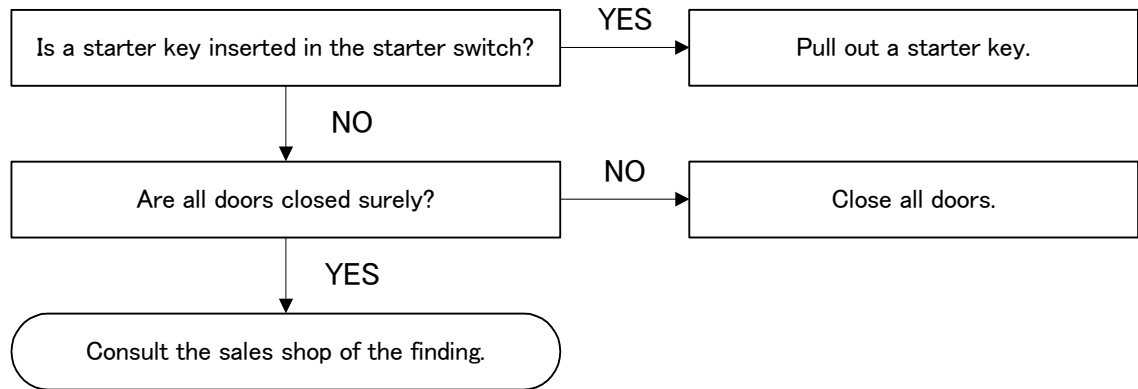
2. It causes the trouble to drop, to bump or to step on the transmitter.

3. Don't leave the transmitter in high temperature place, more than 60 degrees, such as on the dashboard. The lifetime of the battery will be decline and make trouble.

4. When doing the lock/the unlocking of the door by the keyless entry confirm the condition always.

### If Trouble Happened

Proceed through the following checklist. Should any problem consulted your sales shop or dealer.



### Battery Replacement

When the battery of the transmitter became weak replace the battery with a new one by the following procedure. ( use one coin type lithium battery CR2032 )

1. Remove a screw.
2. Hold a case then divide a ditch of circumference up and down and take it off.

The upper side : The side of operation switches

The bottom side : The side of label pasting

(When it is hard to come off, insert a minus screwdriver in a ditch of circumference, and please remove it.)

3. Install a new battery. (The battery is set in an inside case.)
4. Reassemble the transmitter properly.

Notice :

Check the battery's polarity as to correspond with the positive(+) and the negative( -) marks.

This device complies with Part 15 of FCC Rules and RSS-Gen of IC Rules. Operation is subject to the following two conditions: (1) this device may not cause interference, and (2) this device must accept any interference, including interference that may cause undesired operation of this device.

#### **FCC WARNING**

Changes or modifications not expressly approved by the party responsible for compliance could void the user's authority to operate the equipment.

#### **For RECEIVER (H7078)**

Note: This equipment has been tested and found to comply with the limits for a Class B digital device, pursuant to part 15 of the FCC Rules. These limits are designed to provide reasonable protection against harmful interference in a residential installation. This equipment generates, uses and can radiate radio frequency energy and, if not installed and used in accordance with the instructions, may cause harmful interference to radio communications. However, there is no guarantee that interference will not occur in a particular installation. If this equipment does cause harmful interference to radio or television reception, which can be determined by turning the equipment off and on, the user is encouraged to try to correct the interference by one or more of the following measures:

- Reorient or relocate the receiving antenna.
- Increase the separation between the equipment and receiver.
- Connect the equipment into an outlet on a circuit different from that to which the receiver is connected.
- Consult the dealer or an experienced radio/TV technician for help.