

OWNER'S MANUAL (DRAFT)

Operating instructions for this system: Keyless Entry System; will be included in the owner's manual of the vehicle and its contents will be as follow:

Keyless Entry System

Function explanation

1. Door lock control

A lock or unlocking state of the doors is remote-controlled by the microwave sent from the transmitter.

2. Answer back function

The information of lock or unlocking of the doors by the microwave remote control can be confirmed from the sign of the room lamp.

3. Distance of operation

It works within approximately 2 meters from the vehicle.

Caution : The distance of operation will be affected by the electromagnetic circumstance in which this system is located, i.e. in the neighborhood of broadcasting station or power plant.

4. Burglary prevention

If a door is not opened after unlocking by the transmitter, the door is automatically locked 30 seconds later.

5. Safe function

When the key has been inserted into the ignition switch while the door is opened, it does not work.

6. Registration function

This keyless entry system can use three transmitters for one receiver. One transmission code is registered by one registration operation. The oldest code is erased by the registration operation.

When a transmitter is newly added, the registration will be made by the following procedure:

IN DEALER

(INITIAL CONDITION ; INPUT OTHER THAN IGNITION)

1. IG ON OFF, 5 TIMES
2. PRESS UNLOCK BUTTON OF NEW TRANSMITTER WITHIN 5 SECONDS.
3. AFTER A RECEIVER BECOMES PROGRAMMING MODE, BY CYCLING DOOR LOCK ONCE I.E.LOCK UNLOCK
4. PRESS UNLOCK BUTTON OF NEW TRANSMITTER WITHIN 5 SECONDS.
5. RECEIVER WILL CONFIRM PROGRAMMING BY CYCLING DOOR LOCK ONCE. I.E.LOCK/UNLOCK
6. END OF PROGRAMMING.

THE REVEIVER CAN BE TAUGHT THE IDENTITIES OF AS MANY AS THREE(3) TRANSMITTERS. ONCE THE THREE MEMORY LOCATIONS ARE OCCUPIED, A NEW TRANSMITTER PROGRAMMING WILL CAUSE THE FIRST PROGRAMMED TRANSMITTER, I.E. IN THE MEMORY LOCATION TO BE ERASED.

\*IF THE RKE RECEIVER HAS ANOTHER INPUT DURING A SERIES OF ACTION 1-6, IT RECEASES PROGRAMMING MODE.

CAUTION :

When registering a new transmitter is made for the loss and so on, repeat registration operation three times for deleting the old code.

The Operation Point

1. Door locking  
Push the lock switch on the transmitter.
2. Door unlocking  
Push the unlock switch on the transmitter.

CAUTION :

The micro wave signal sent from the transmitter is exclusive use for each product.

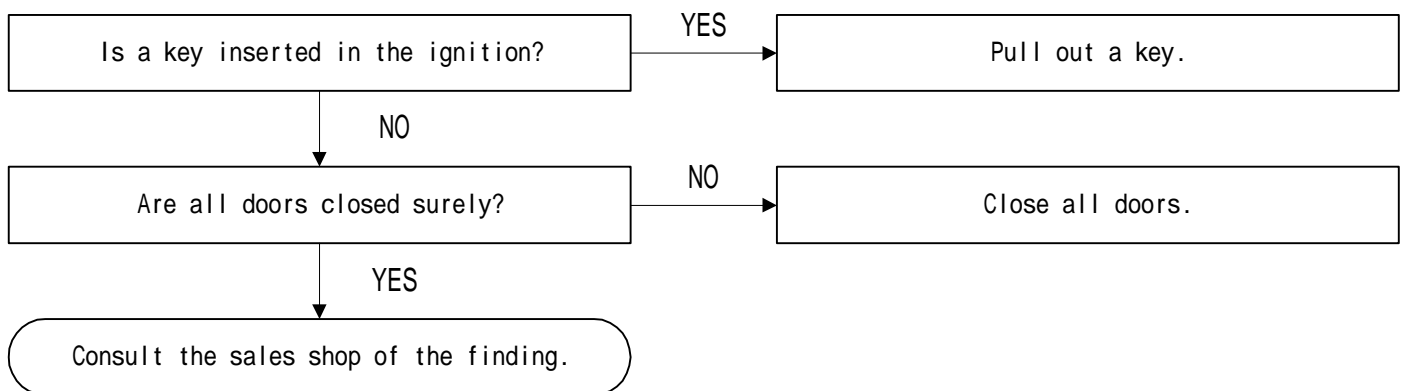
Cautions on Handling

- 1.the transmitter must keep dry.
- 2.It causes the trouble to drop, to bump or to step on the transmitter.

3. Don't leave the transmitter in high temperature place, more than 60 degrees, such as on the dashboard. The lifetime of the battery will be decline and make trouble.
4. When doing the lock/the unlocking of the door by the keyless entry confirm the condition always.

#### If Trouble Happened

Proceed through the following checklist. Should any problem consulted your sales shop or dealer.



#### Battery Replacement

When the battery of the transmitter became weak replace the battery with a new one by the following procedure. (use one coin type lithium battery CR1616).

1. Remove a screw then remove the case with pressing.
2. Install a new battery.
3. Reassemble the transmitter properly.

#### Notice :

Check the battery's polarity as to correspond with the positive(+) and the negative(-) marks. (The upper side is +.)

FCC ID : OBIC9483TX

Changes or modifications not expressly approved by the manufacturer for compliance could void the user's authority to operate the equipment.

This device complies with Part 15 of the FCC Rules. Operation is subject to the following two conditions: (1) This device may not cause harmful interference, and (2) this device must accept any interference received, including interference that may cause undesired operation.