



TELSON INFORMATION & COMMUNICATIONS Co., LTD.

17FL TELSON VENTURE TOWER 949-3 DOKOK-DONG, KANGNAM-KU,
SEOUL, 135-739, KOREA

TEL: +822-2140-1057 FAX: +822-887-2693

E-MAIL: don@telson.co.kr DATE: 01-05-21

COMPANY LETTERHEAD

May 21, 2001

Federal Communications Commission
Authorization and Evaluation Division
Equipment Authorization Branch
7435 Oakland Mills Road
Columbia, MD 21046
Attn: Andy Leimer

In re: Telson Information and Communications Co., Ltd.
FCC ID: OBAPCM-1930
FCC Part 24 Certification

Dear Andy:

Telson Information and Communications Co., Ltd., hereby confirms that the attached user's manual is a preliminary version for the FCC ID: OBAPCM-1930. The final version of the users manual will be provided to the FCC upon completion.

If you have any further questions regarding this matter, please do not hesitate to contact me or PCTEST Lab at (410) 290-6652.

Sincerely,

Signature

Name : Don Heo
Title : Product Manager
Company : Telson Information & Communications Co., Ltd.

PCM-1930 User Manual

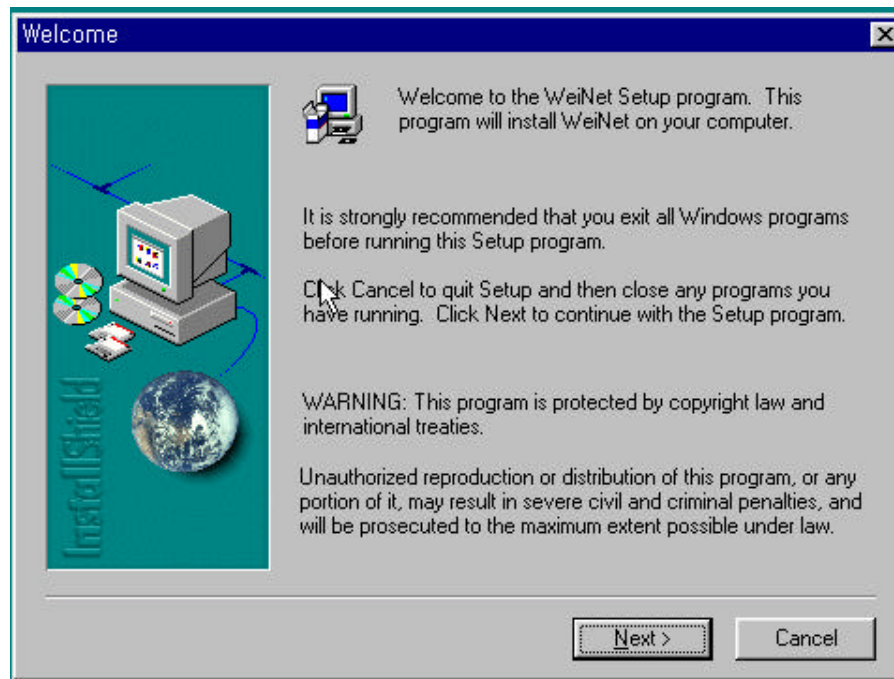
- **Note :**

System Requirements

- OS : User environment of Windows 95/98
(Windows 2000 compatibility to next)
- Compatible with IBM-PC more than Pentium CPU
- Memory : 32MB or higher
- VGA : 640×480 16bit or higher color

PCM-1930 User program set up

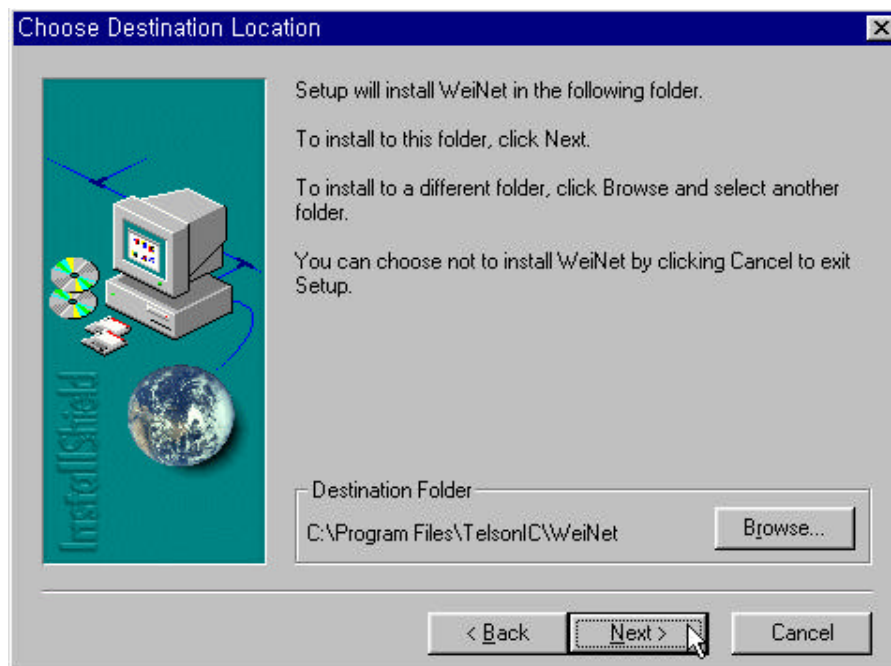
1. Insert the provided CD-ROM on your
2. Choose [Start]-[Run]
3. Input “D:\setup.exe” into a “Open”. (if in case of CD-ROM Drive is D:)
Change the used drive if CD-ROM Drive is not D: . (example : in case of CD-ROM Drive is E: \ → E:\setup.exe)
4. Press the “confirmation” button.
5. Press the “Next” button when displayed the left picture.



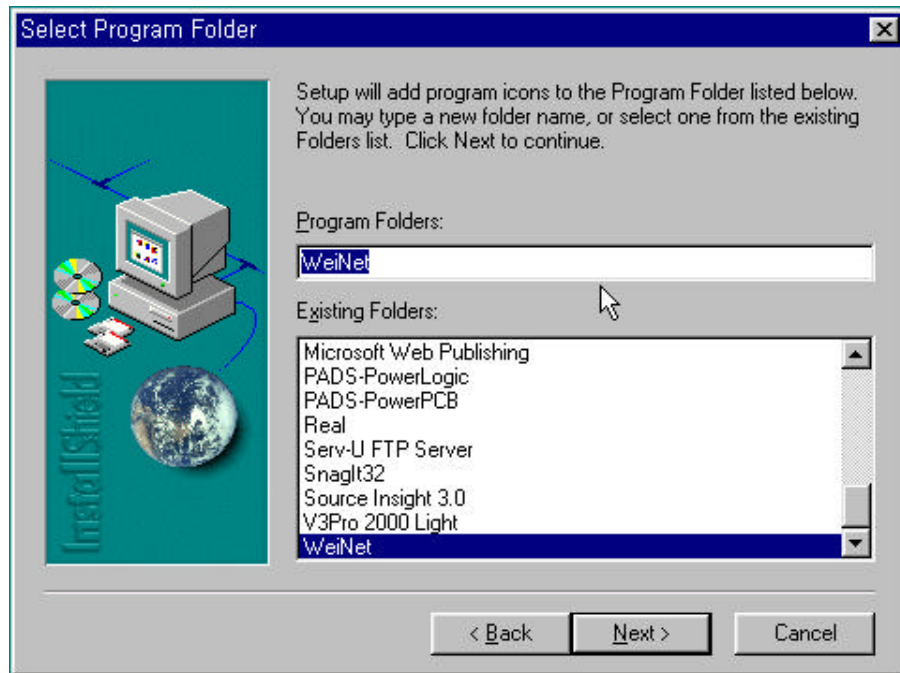
6. This step decides on ones folder of installed program.

Fundamentally, installed at the c: \Program File\TelsonIC \WeiNet

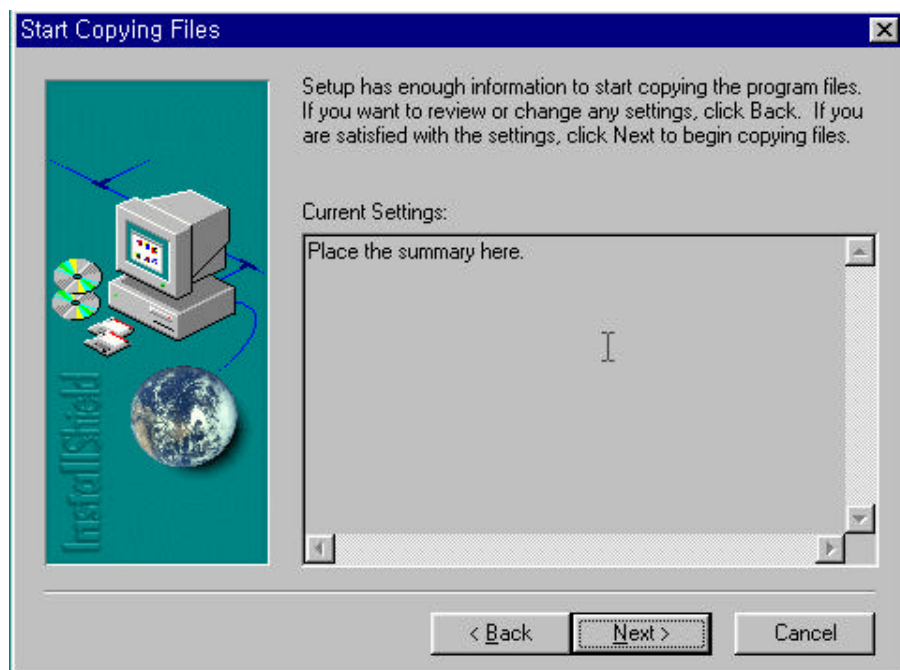
If you want to install at desired folder, press the “Browse...” button and change the drive and folder.



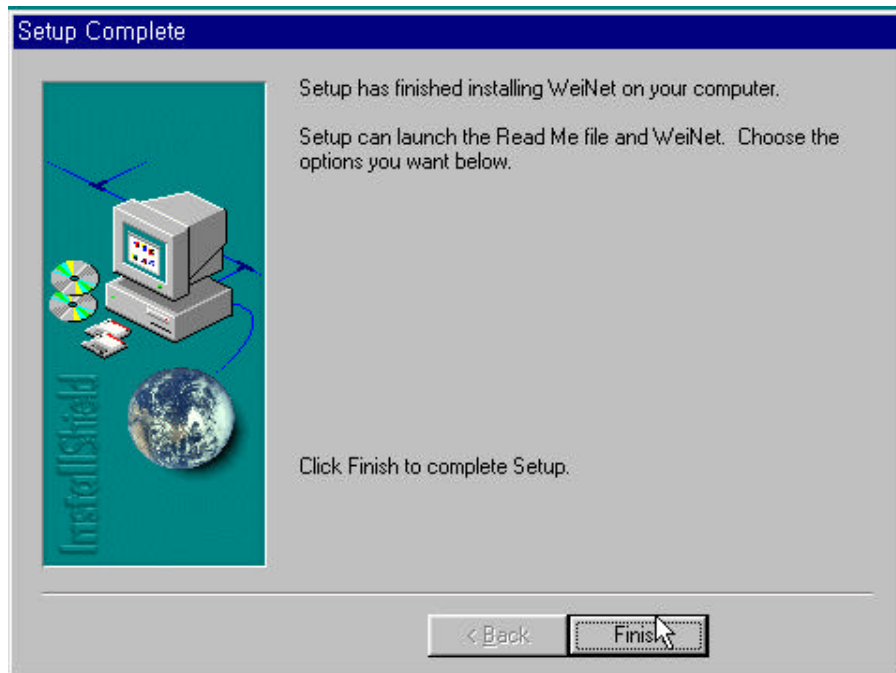
7. You can execute via [Start]-[Program]



8. Press Next to begin set up.



9. Press Finish to complete set up.



10. Insert PCM-1930 PCMCIA Card in the PCMCIA slot and then, use PCM-830 PCMCIA Card by running the Device drive.