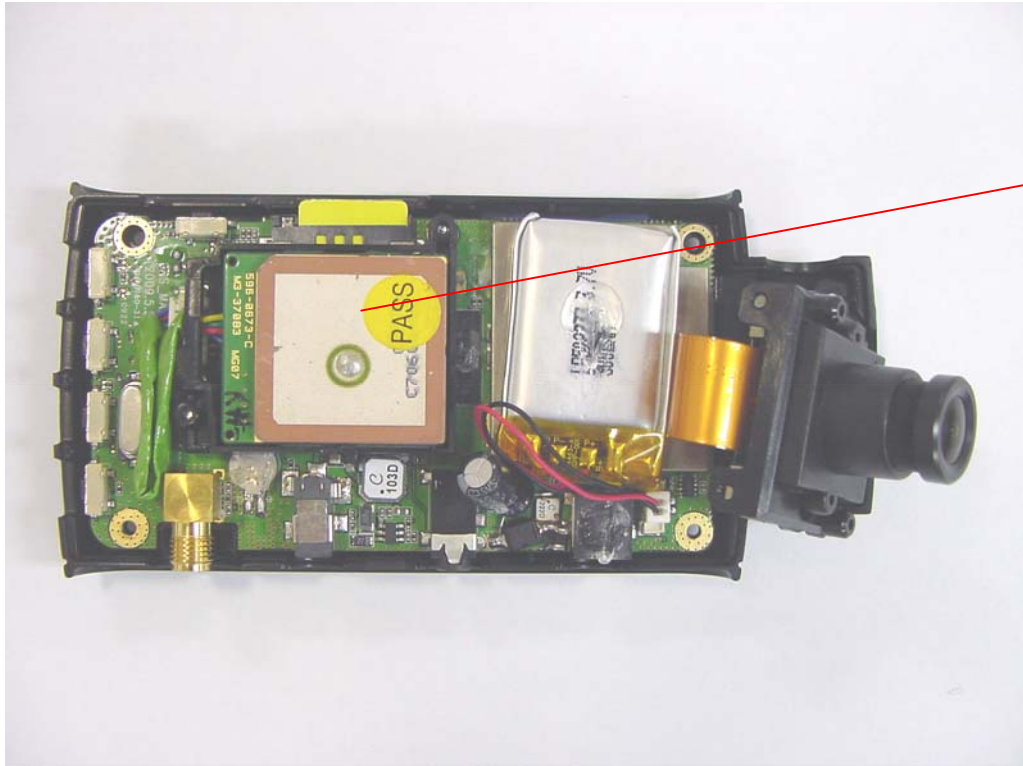


Appendix 3. Photographs of EUT [Internal View]

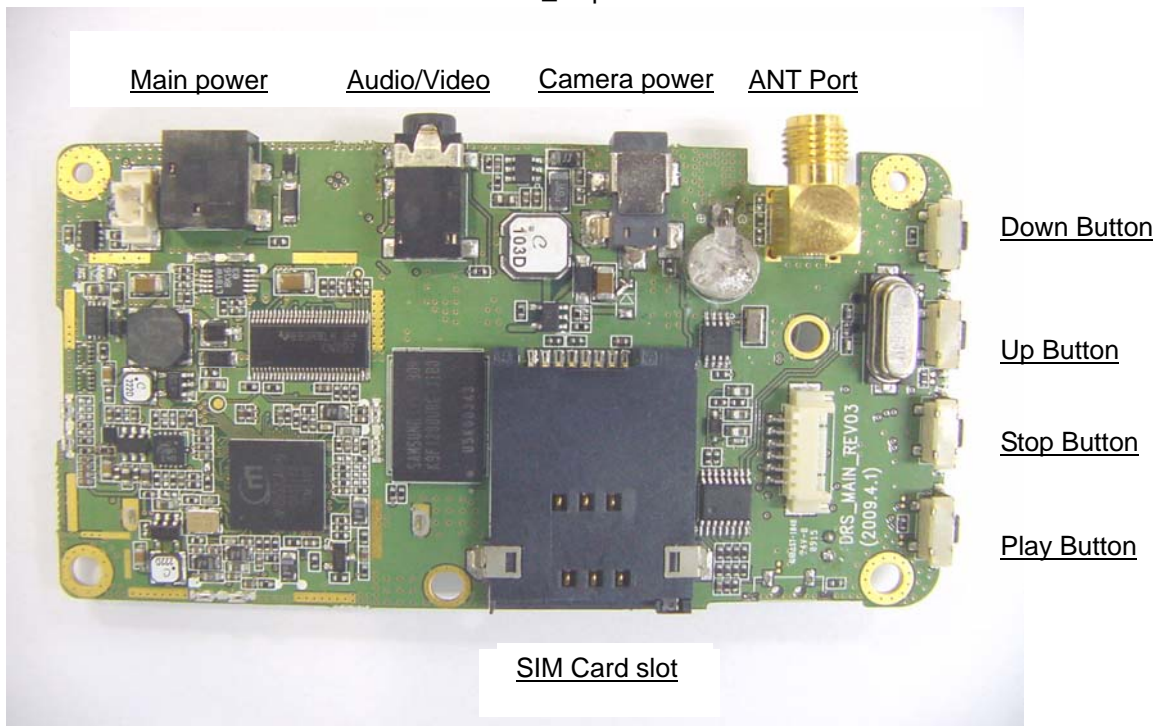
Removed Housing



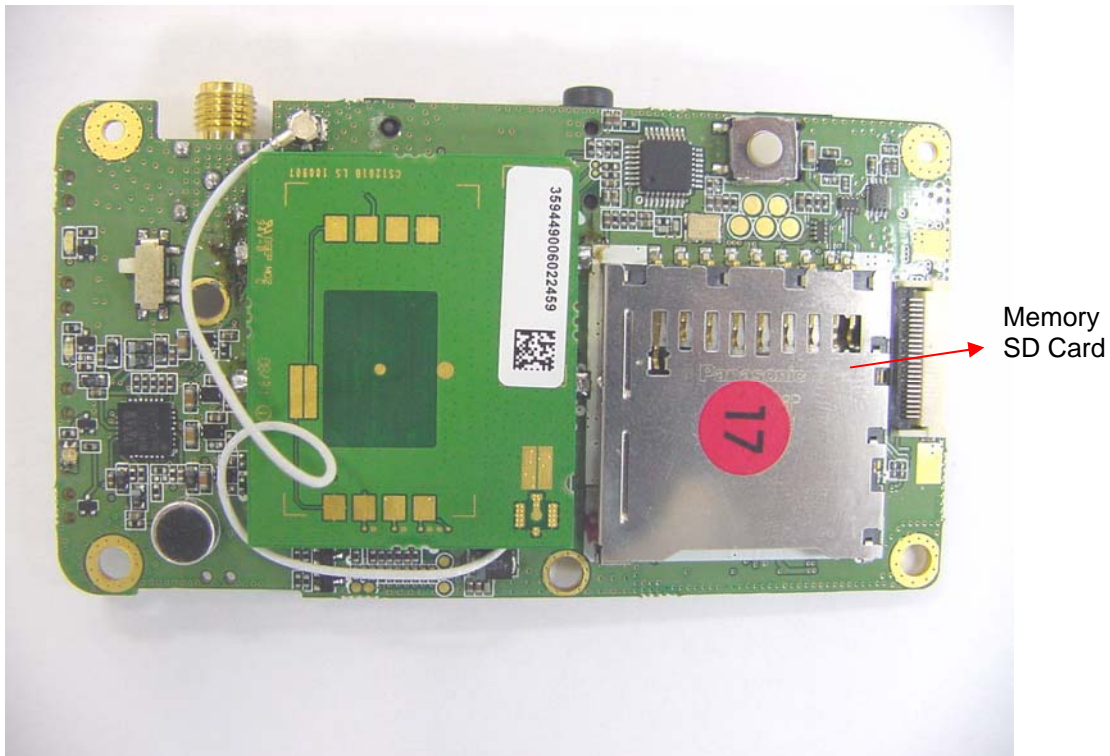
GSM/GPRS
Module

Appendix 3. Photographs of EUT [Internal View]

Main PCB_ Top



Main PCB_ Bottom



※ Function description about above “The component placement on the chassis”

■ Main PCB Top Part

- Main power : 12Vdc is supplied by adaptor from Lead acid battery of Car
- Audio/Video : Car's information is obtained by this port which is audio and video signal recorded in memory SD Card.
- Camera power : This port is 12Vdc power supply to Rear side camera
- ANT port : Car's information obtain to the through RF Module is radiated a air
- Down and UP Button : this button is named cursor on display and when it is push, cursor is moving
- Stop and Play Button : This button is function that is on or off moving picture of car's information
- SIM Card Slot : This card is contained RF Module's information(protocol, Firmware version information etc)
- SD Memory card : This card is during the record car's information(position, place, picture etc)when the contact between other car's, or crash etc