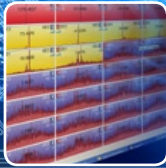


technology for
network management
and leakage control



DATA ACQUISITION

DATA MANAGEMENT

FLOW MONITORING

SENSORS

LEAK DETECTION

LEAK LOCATION

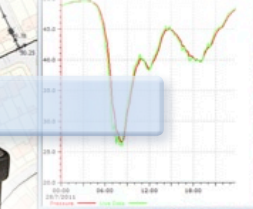
product guide

Portable data logging

PrimeLog

Portable data logger for multiple applications including flow and pressure measurement

- High accuracy on pressure and analogue to $\pm 0.1\%$
- Hi-speed USB local communications
- Powered for 5 years (dependent upon usage)
- Small, robust and submersible to IP68



XAP Display

Portable USB display for use with all PrimeLog+ and XiLog+ data loggers, shows current values for each channel and minimum daily flow value.



Telemetry data logging



XiLog+

Data logger with GPRS and SMS communications

- 1, 2, 3 and 9 channel models
- Data transmission from every 15 minutes up to daily send
- High performance 'below-ground' antenna
- Wide range of sensors with high accuracy
- Powered for 5 years (dependent upon usage)
- 2 Gbyte memory for rapid logging and logs at multiple intervals



XiLog+Mini

With external antenna for installation into small chambers.

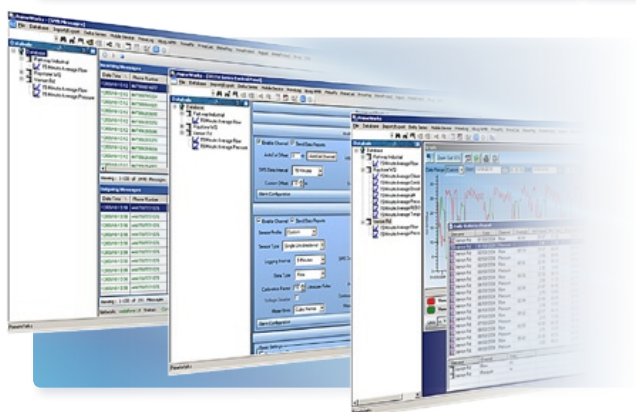
XiLog^{eco}

Data logger powered by water pressure

- Regular 15 minute data transmission
- Environmentally friendly
- Minimises site visits
- PRV performance monitoring
- District/zone flow monitoring
- Boundary valve monitoring



Data management



PrimeWorks

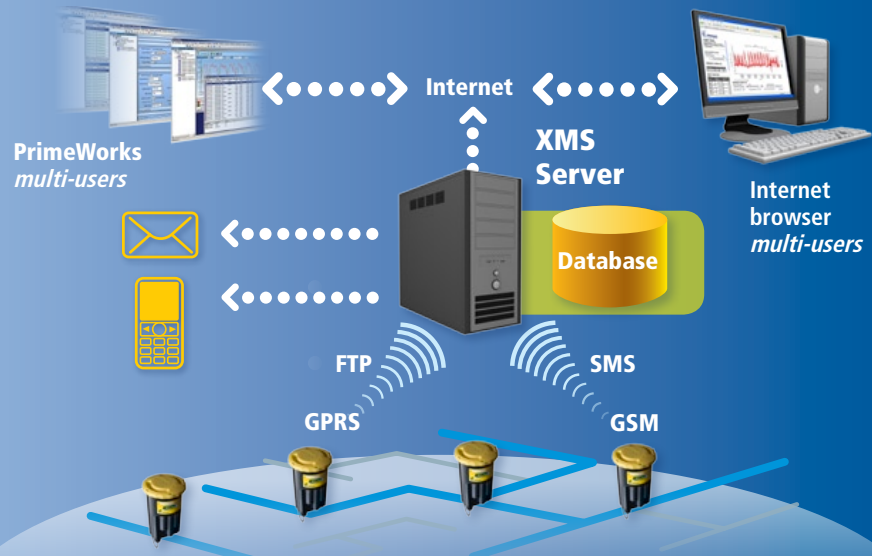
Water data management software

- Comprehensive graphing and reporting
- Extensive database control
- Data import/export
- Auto-export of data
- Interfaces with corporate systems
- Daily statistics

XMS

Managed data service

- Data sent to any number of PC's
- Alarms to mobile phones
- Auto gap-filling
- Data available on any internet browser
- Data management, audit trail and diagnostics



Sensors



Sensors

For use with PrimeLog+ and XiLog+

- Depth transducers – logging in reservoirs, boreholes and weir level/flow conversion
- Flowmeter pulse units – for operation with a wide range of water meters
- Current clamp – monitors pump on/off times
- Overflow sensor – to monitor times of overflow
- Rain gauge

Flow monitoring

PrimeProbe2 SMART

Electromagnetic insertion flowmeter for network flow surveys and checking in-situ meters

- Operation over wide flow range
- Simple installation and set-up
- Rugged - no moving parts
- Operation in low conductivity water

PrimeProbe2 system

Comprises probe, gauging rod, PrimeLog 2i, cables and hose in a ruggedised case

Flow profiling software

Profiles the velocity across the pipe diameter to improve calculation of flowrate

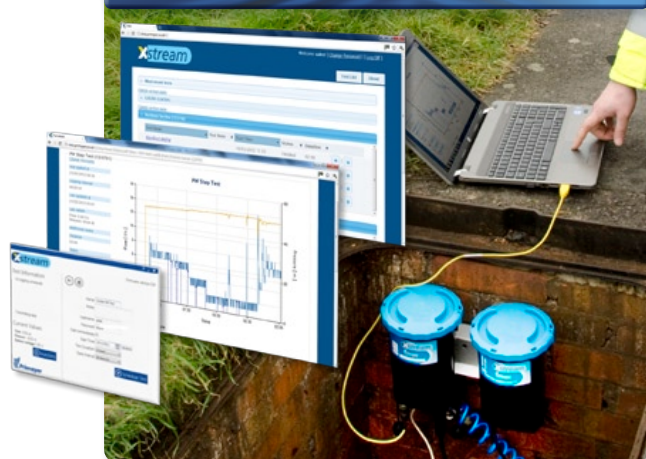


PrimeFlo-T

Transit-time flowmeter

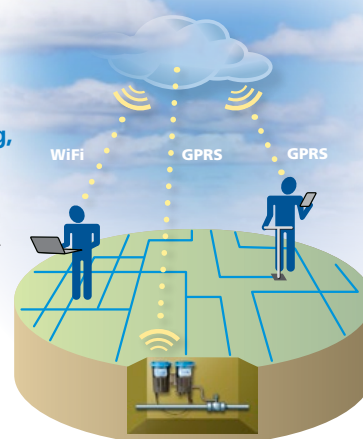
- Survey application with 24 hour battery life
- Operation on pipe sizes from 25 – 2500mm (one pair of sensors)
- Non-invasive sensors, providing;
 - no flow disturbance
 - no process interruption
 - no water contact
- Easy set-up and installation
- Integral data logger

Leak detection



Live data streaming for step testing, PRV commissioning, network re-zoning

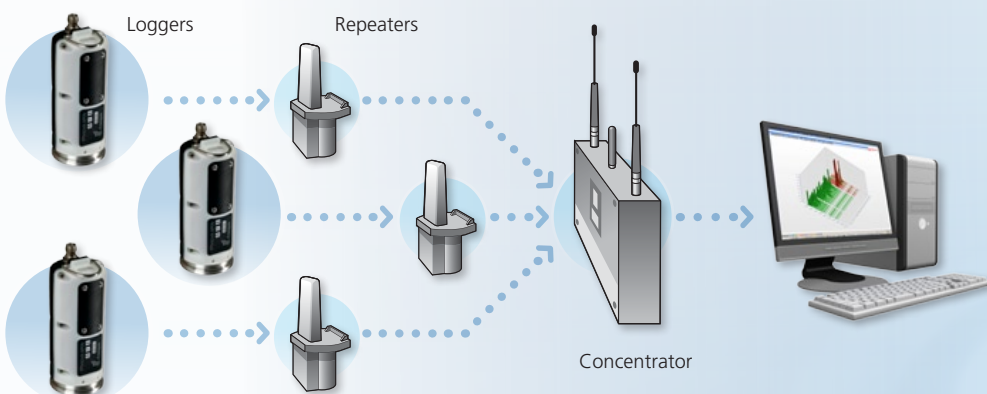
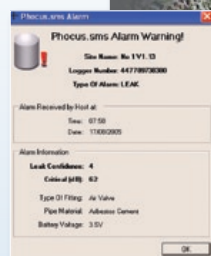
- Real-time flow and pressure data viewed on internet browser
- Single user operation
- No radio range restrictions
- Annotate valve closure and other operations on graph



Phocus.sms

Leak detection logger with remote alarm via SMS

- Instant alarms – reduces time the leak 'runs'
- Three sample periods reduces incidence of false alarms
- Regular 'health-check' reports
- No 'drive-by' required



Phocus.hr

Leak detection via AMR radio

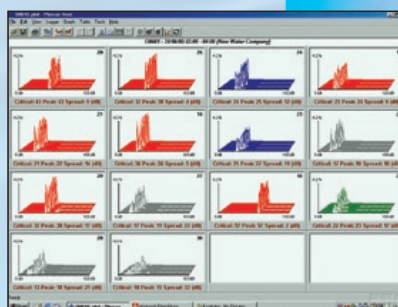
- Transmission of daily information
- Three sample periods reduces incidence of false alarms
- No 'drive-by' required
- Integrates with AMR network of Homerider Systems

Phocus2

Acoustic leak detection system

- For leak detection surveys
- Rapid on-site identification of leaks
- Contact-less communications to multiple loggers

Display up to thirty results on-screen - using scroll bar allows for even more. Colour coding enables easy identification of leakage graphs. In this example, highest leakage confidence is shown in red, no leakage shown in grey.



Eureka3

Innovative leak location correlator

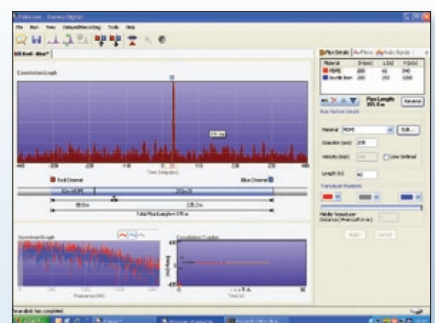
- High definition touch screen for easy operation
- Interactive pipe model, correlation and coherence spectrum displays
- Optional direct transmitter connection to pipe (street-working friendly)
- Post-processing analysis using powerful **Enigma**® software
- In-case battery charging



Eureka Digital

Advanced leak noise correlator

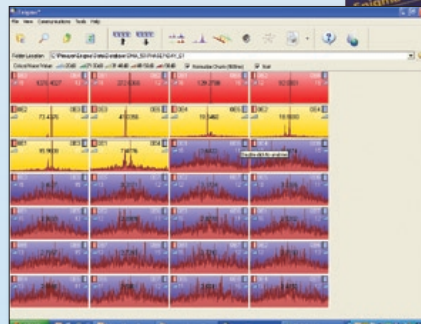
- Optimum performance
- Re-analysis of leak noise recordings
- Advanced correlation, coherence and filtering
- Three sensor input for automatic velocity measurement
- Operation not limited by radio range



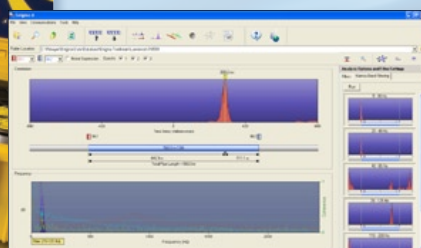
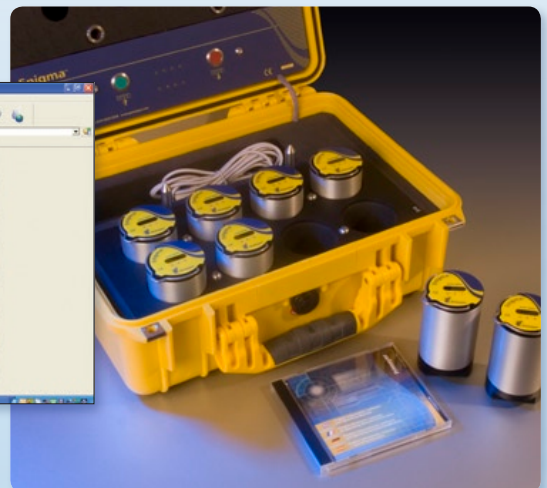
Enigma

Multi-point correlation system for advanced leak location

- Operation at night for optimum performance – but avoids costly night working
- Three sound samples to separate consumer use from leakage
- Can find multiple leaks
- Latest 24-bit digital processing
- Advanced correlation, coherence and filtering



Display of thumbnail correlation results with automated sorting of leak confidence



Enigma-hyQ

For trunk main leak location

- High sensitivity hydrophone directly detects pressure wave in the water
- Narrow band filtering technique
- Records acoustic data at night – but avoids costly night working
- No radio range limitation

Leak listening



Hykron

Leak listening system

- High acoustic sensitivity
- Easy operation
- Low cost
- Durable construction
- Alkaline battery with easy field replacement



Mikron

Advanced acoustic leak listening system

- Very high acoustic sensitivity
- Wide frequency range
- *Minimum Noise Level* measurement
- Ground microphone with wind-noise isolation
- Lightweight amplifier with clear digital display
- Three models available



Pipe/Cable location

CScope

High performance pipe and cable location

- Multiple operation modes
- Optional *All Scan* frequency mode
- Rugged, lightweight, easy to use
- Optional depth measurement



Rental service



A comprehensive range of instrumentation available at competitive rates. Products offer leakage and network management engineers the best technology for short-term investigations to ongoing efficiency and customer services initiatives.



technology for network management and leakage control

Primayer Limited

Primayer House, Parklands Business Park,
Denmead, Hampshire, PO7 6XP, United Kingdom
T +44 (0)2392 252228 F +44 (0)2392 252235
E sales@primayer.com
www.primayer.com



Information in this document is subject to change without notice.

PRG-GEN-044-4.0