


# TEST REPORT

For Bluetooth-LE

**Report No.** ..... : **CHEW22100047** **Report Verification:** 

**Project No.**..... : **SHT2209084903EW**

**FCC ID**..... : **OA8EB121**

**Applicant's name** ..... : **Quanzhou Chierda Electronic Telecom Co.,Ltd.**

**Address**..... : No.8,Zian Road,Jiangnan High-tech Industrial Zone,Quanzhou,Fujian,China

**Product Name** ..... : **Bluetooth headset**

**Trade Mark** ..... : Chierda

**Model No.** ..... : EB121

**Listed Model(s)** ..... : EB122, EB123

**Standard** ..... : **FCC CFR Title 47 Part 15 Subpart C Section 15.247**

**Date of receipt of test sample**..... : Sep.30, 2022

**Date of testing**..... : Sep.30, 2022-Oct.17, 2022

**Date of issue**..... : Oct.18, 2022

**Result**..... : **PASS**

Compiled by  
( position+printedname+signature)....: File administrators Fanghui Zhu

*Fanghui Zhu*

Supervised by  
(position+printedname+signature)....: Project Engineer Weiyang.Xiang

*Weiyang.Xiang*

Approved by  
(Position+Printed name+Signature): RF Manager Hans Hu

*Hans Hu*

**Testing Laboratory Name** ..... : **Shenzhen Huatongwei International Inspection Co., Ltd.**

**Address**..... : 1/F, Bldg 3, Hongfa Hi-tech Industrial Park, Genuy Road, Tianliao, Gongming, Shenzhen, China

**Shenzhen Huatongwei International Inspection Co., Ltd. All rights reserved.**

This publication may be reproduced in whole or in part for non-commercial purposes as long as the Shenzhen Huatongwei International Inspection Co., Ltd. is acknowledged as copyright owner and source of the material. Shenzhen Huatongwei International Inspection Co., Ltd. takes no responsibility for and will not assume liability for damages resulting from the reader's interpretation of the reproduced material due to its placement and context.

The test report merely correspond to the test sample.

## Contents

<b><u>1.</u></b>	<b><u>TEST STANDARDS AND REPORT VERSION</u></b>	<b><u>3</u></b>
1.1.	Test Standards	3
1.2.	Report version	3
<b><u>2.</u></b>	<b><u>TEST DESCRIPTION</u></b>	<b><u>4</u></b>
<b><u>3.</u></b>	<b><u>SUMMARY</u></b>	<b><u>5</u></b>
3.1.	Client Information	5
3.2.	Product Description	5
3.3.	Radio Specification Description	5
3.4.	Testing Laboratory Information	6
<b><u>4.</u></b>	<b><u>TEST CONFIGURATION</u></b>	<b><u>7</u></b>
4.1.	Test frequency list	7
4.2.	Descriptions of Test mode	7
4.3.	Test sample information	7
4.4.	Support unit used in test configuration and system	8
4.5.	Testing environmental condition	8
4.6.	Statement of the measurement uncertainty	8
4.7.	Equipment Used during the Test	9
<b><u>5.</u></b>	<b><u>TEST CONDITIONS AND RESULTS</u></b>	<b><u>10</u></b>
5.1.	Antenna Requirement	10
5.2.	AC Conducted Emission	11
5.3.	Peak Output Power	13
5.4.	Power Spectral Density	14
5.5.	6dB bandwidth	15
5.6.	99% Occupied Bandwidth	16
5.7.	Duty Cycle	17
5.8.	Conducted Band edge and Spurious Emission	18
5.9.	Radiated Band edge Emission	19
5.10.	Radiated Spurious Emission	21
<b><u>6.</u></b>	<b><u>TEST SETUP PHOTOS</u></b>	<b><u>26</u></b>
<b><u>7.</u></b>	<b><u>EXTERNAL AND INTERNAL PHOTOS</u></b>	<b><u>28</u></b>
<b><u>8.</u></b>	<b><u>APPENDIX REPORT</u></b>	<b><u>32</u></b>

## 1. TEST STANDARDS AND REPORT VERSION

### 1.1. Test Standards

The tests were performed according to following standards

- [FCC Rules Part 15.247](#): Frequency Hopping, Direct Spread Spectrum and Hybrid Systems that are in operation within the bands of 902-928 MHz, 2400-2483.5 MHz, and 5725-5850 MHz
- [ANSI C63.10:2013](#): American National Standard for Testing Unlicensed Wireless Devices
- [KDB 558074 D01 15.247 Meas Guidance v05r02](#): Guidance for Compliance Measurements on Digital Transmission System, Frequency Hopping Spread Spectrum System, and Hybrid System Devices Operating under Section 15.247 of The FCC Rules

### 1.2. Report version

Revision No.	Date of issue	Description
N/A	2022-10-18	Original

## 2. TEST DESCRIPTION

Report clause	Test Items	Standard Requirement	Result	Test Engineer
5.1	Antenna Requirement	15.203/15.247(c)	PASS	Xiaoxiao Li
5.2	AC Conducted Emission	15.207	N/A	N/A
5.3	Peak Output Power	15.247(b)(3)	PASS	Xiaoxiao Li
5.4	Power Spectral Density	15.247(e)	PASS	Xiaoxiao Li
5.5	6dB Bandwidth	15.247(a)(2)	PASS	Xiaoxiao Li
5.6	99% Occupied Bandwidth	-	PASS <sup>*1</sup>	Xiaoxiao Li
5.7	Duty cycle	-	PASS <sup>*1</sup>	Xiaoxiao Li
5.8	Conducted Band Edge and Spurious Emission	15.247(d)/15.205	PASS	Xiaoxiao Li
5.9	Radiated Band Edge Emission	15.205/15.209	PASS	Quanhai Deng
5.10	Radiated Spurious Emission	15.247(d)/15.205/15.209	PASS	Quanhai Deng

Note:

- The measurement uncertainty is not included in the test result.
- <sup>\*1</sup>: No requirement on standard, only report these test data.

### 3. SUMMARY

#### 3.1. Client Information

Applicant:	Quanzhou Chierda Electronic Telecom Co.,Ltd.
Address:	No.8,Zian Road,Jiangnan High-tech Industrial Zone,Quanzhou,Fujian,China
Manufacturer:	Quanzhou Chierda Electronic Telecom Co.,Ltd.
Address:	No.8,Zian Road,Jiangnan High-tech Industrial Zone,Quanzhou,Fujian,China

#### 3.2. Product Description

Main unit information:	
Product Name:	Bluetooth headset
Trade Mark:	Chierda
Model No.:	EB121
Listed Model(s):	EB122, EB123
Power supply:	DC 3.7V from Battery
Hardware version:	ver1.1
Software version:	ver1.1
Accessory unit information:	
Battery information:	3.7V d.c., 180mAh

#### 3.3. Radio Specification Description

Bluetooth version:	V5.3
Support function <sup>*2</sup> :	BLE
Modulation:	GFSK
Operation frequency:	2402MHz~2480MHz
Channel number:	40
Channel separation:	2MHz
Antenna type:	PCB Antenna
Antenna gain:	2.71 dBi

Note:

\*2: only show the RF function associated with this report.

### 3.4. Testing Laboratory Information

Laboratory Name	Shenzhen Huatongwei International Inspection Co., Ltd.	
Laboratory Location	1/F, Bldg 3, Hongfa Hi-tech Industrial Park, Genyu Road, Tianliao, Gongming, Shenzhen, China	
Connect information:	Phone: 86-755-26715499 E-mail: <a href="mailto:cs@szhtw.com.cn">cs@szhtw.com.cn</a> <a href="http://www.szhtw.com.cn">http://www.szhtw.com.cn</a>	
Qualifications	Type	Accreditation Number
	FCC	762235

## 4. TEST CONFIGURATION

### 4.1. Test frequency list

According to section 15.31(m), regards to the operating frequency range over 10 MHz, must select three channels which were tested. The Lowest frequency, the middle frequency, and the highest frequency of channel were selected to perform the test, please see the below blue front.

Channel	Frequency (MHz)
00	2402
01	2404
. . .	. . .
19	2440
. . .	. . .
38	2478
39	2480

### 4.2. Descriptions of Test mode

For RF test items
The engineering test program was provided and enabled to make EUT continuous transmit.
For Radiated spurious emissions:
The engineering test program was provided and enabled to make EUT continuous transmit. The EUT in each of three orthogonal axis emissions had been tested, but only the worst case (X axis) data Recorded in the report.

### 4.3. Test sample information

Test item	HTW sample no.
RF Conducted test items	Please refer to the description in the appendix report
RF Radiated test items	YPHT22090849004
EMI test items	YPHT22090849004

Note:

RF Conducted test items: Peak Output Power, Power Spectral Density, 6dB Bandwidth, 99% Occupied Bandwidth, Duty cycle, Conducted Band Edge and Spurious Emission

RF Radiated test items: Radiated Band Edge Emission, Radiated Spurious Emission

EMI test items: AC Conducted Emission

#### 4.4. Support unit used in test configuration and system

The EUT has been associated with peripherals and configuration operated in a manner tended to maximize its emission characteristics in a typical application.

The following peripheral devices and interface cables were connected during the measurement:

Whether support unit is used?			
✓ YES			
Item	Equipment	Trade Name	Model No.
1	Adapter	HUAWEI	HW-050200C01

#### 4.5. Testing environmental condition

Type	Requirement	Actual
Temperature:	15~35°C	25°C
Relative Humidity:	25~75%	50%
Air Pressure:	860~1060mbar	1000mbar

#### 4.6. Statement of the measurement uncertainty

Test Item	Measurement Uncertainty
AC Conducted Emission (150kHz~30MHz)	3.21 dB
Radiated Emission (30MHz~1000MHz)	4.54 dB
Radiated Emissions (1GHz~25GHz)	5.10 dB
Peak Output Power	1.07dB
Power Spectral Density	1.07dB
Conducted Spurious Emission	1.68dB
6dB Bandwidth	0.002%

This uncertainty represents an expanded uncertainty expressed at approximately the 95% confidence level using a coverage factor of k=1.96.



#### 4.7. Equipment Used during the Test

● Radiated emission-6th test site							
Used	Test Equipment	Manufacturer	Equipment No.	Model No.	Serial No.	Last Cal. Date (YY-MM-DD)	Next Cal. Date (YY-MM-DD)
●	Semi-Anechoic Chamber	Albatross projects	HTWE0127	SAC-3m-02	C11121	2018/09/30	2023/09/29
●	EMI Test Receiver	R&S	HTWE0099	ESCI	100900	2022/08/30	2023/08/29
●	Loop Antenna	R&S	HTWE0170	HFH2-Z2	100020	2021/04/06	2024/04/05
●	Ultra-Broadband Antenna	SCHWARZBECK	HTWE0123	VULB9163	538	2021/04/06	2024/04/05
●	Pre-Amplifier	SCHWARZBECK	HTWE0295	BBV 9742	N/A	2021/11/05	2022/11/04
●	RF Connection Cable	HUBER+SUHNER	HTWE0062-01	N/A	N/A	2022/02/25	2023/02/24
●	RF Connection Cable	HUBER+SUHNER	HTWE0062-02	SUCOFLEX104	501184/4	2022/02/25	2023/02/24
●	Test Software	R&S	N/A	ES-K1	N/A	N/A	N/A

● Radiated emission-7th test site							
Used	Test Equipment	Manufacturer	Equipment No.	Model No.	Serial No.	Last Cal. Date (YY-MM-DD)	Next Cal. Date (YY-MM-DD)
●	Semi-Anechoic Chamber	Albatross projects	HTWE0122	SAC-3m-01	C11121	2018/09/27	2023/09/26
●	Spectrum Analyzer	R&S	HTWE0098	FSP40	100597	2022/08/25	2023/08/24
●	Horn Antenna	SCHWARZBECK	HTWE0126	9120D	1011	2020/04/01	2023/03/31
●	Broadband Horn Antenna	SCHWARZBECK	HTWE0103	BBHA9170	BBHA9170472	2020/04/27	2023/04/26
●	Pre-amplifier	CD	HTWE0071	PAP-0102	12004	2021/11/05	2022/11/04
●	Broadband Pre-amplifier	SCHWARZBECK	HTWE0201	BBV 9718	9718-248	2022/02/28	2023/02/27
●	RF Connection Cable	HUBER+SUHNER	HTWE0120-01	6m 18GHz S Serisa	N/A	2022/02/25	2023/02/24
●	RF Connection Cable	HUBER+SUHNER	HTWE0120-02	6m 3GHz RG Serisa	N/A	2022/02/25	2023/02/24
●	RF Connection Cable	HUBER+SUHNER	HTWE0119-05	6m 3GHz RG Serisa	N/A	2022/02/25	2023/02/24
●	RF Connection Cable	HUBER+SUHNER	HTWE0120-04	6m 3GHz RG Serisa	N/A	2022/02/25	2023/02/24
●	Test Software	Audix	N/A	E3	N/A	N/A	N/A

Used	Test Equipment	Manufacturer	Equipment No.	Model No.	Serial No.	Last Cal. Date (YY-MM-DD)	Next Cal. Date (YY-MM-DD)
●	Signal and spectrum Analyzer	R&S	HTWE0242	FSV40	100048	2022/08/25	2023/08/24
●	Signal & Spectrum Analyzer	R&S	HTWE0262	FSW26	103440	2022/08/25	2023/08/24
●	Spectrum Analyzer	Agilent	HTWE0286	N9020A	MY50510187	2022/08/25	2023/08/24
●	Radio communication tester	R&S	HTWE0287	CMW500	137688-Lv	2022/08/25	2023/08/24
●	Test software	Tonscend	N/A	JS1120	N/A	N/A	N/A

## 5. TEST CONDITIONS AND RESULTS

### 5.1. Antenna Requirement

#### REQUIREMENT

##### **FCC CFR Title 47 Part 15 Subpart C Section 15.203:**

An intentional radiator shall be designed to ensure that no antenna other than that furnished by the responsible party shall be used with the device. The use of a permanently attached antenna or of an antenna that uses a unique coupling to the intentional radiator, the manufacturer may design the unit so that a broken antenna can be replaced by the user, but the use of a standard antenna jack or electrical connector is prohibited.

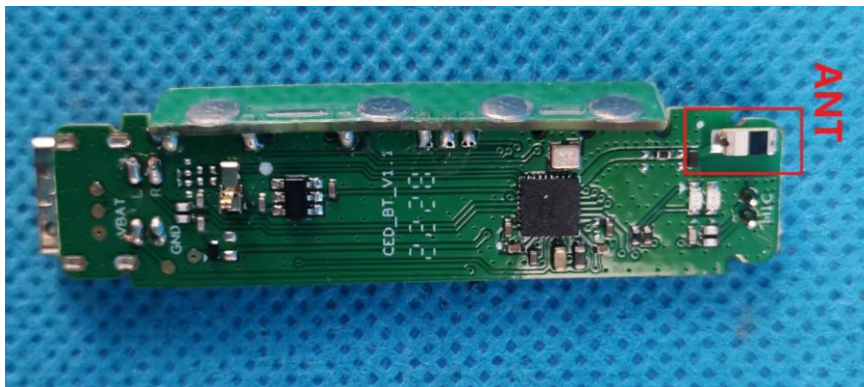
##### **FCC CFR Title 47 Part 15 Subpart C Section 15.247(c) (1)(i):**

(i) Systems operating in the 2400-2483.5 MHz band that is used exclusively for fixed. Point-to-point operations may employ transmitting antennas with directional gain greater than 6 dBi provided the maximum conducted output power of the intentional radiator is reduced by 1 dB for every 3 dB that the directional gain of the antenna exceeds 6 dBi.

#### TEST RESULT

☒ **Passed**      ☐ **Not Applicable**

The antenna type is a ceramic antenna, the directional gain of the antenna less than 6 dBi, please refer to the below antenna photo.



## 5.2. AC Conducted Emission

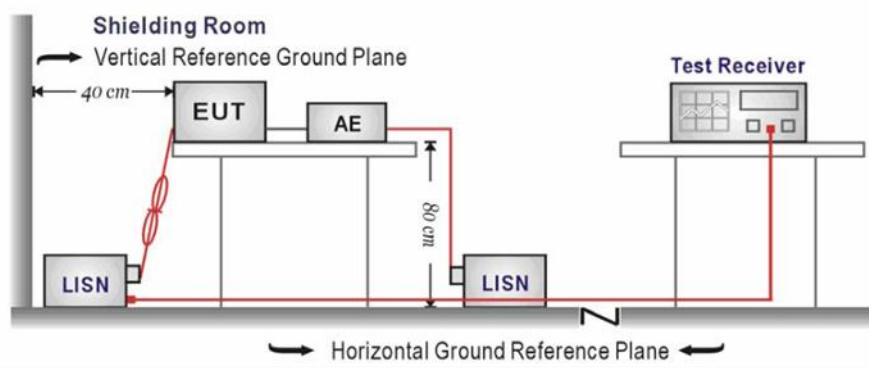
### LIMIT

FCC CFR Title 47 Part 15 Subpart C Section 15.207

Frequency range (MHz)	Limit (dBuV)	
	Quasi-peak	Average
0.15-0.5	66 to 56*	56 to 46*
0.5-5	56	46
5-30	60	50

\* Decreases with the logarithm of the frequency.

### TEST CONFIGURATION



### TEST PROCEDURE

1. The EUT was setup according to ANSI C63.10 requirements.
2. The EUT was placed on a platform of nominal size, 1 m by 1.5 m, raised 80 cm above the conducting ground plane. The vertical conducting plane was located 40 cm to the rear of the EUT. All other surfaces of EUT were at least 80 cm from any other grounded conducting surface.
3. The EUT and simulators are connected to the main power through a line impedances stabilization network (LISN). The LISN provides a 50 ohm /50uH coupling impedance for the measuring equipment.
4. The peripheral devices are also connected to the main power through a LISN. (Please refer to the block diagram of the test setup and photographs)
5. Each current-carrying conductor of the EUT power cord, except the ground (safety) conductor, was individually connected through a LISN to the input power source.
6. The excess length of the power cord between the EUT and the LISN receptacle were folded back and forth at the center of the lead to form a bundle not exceeding 40 cm in length.
7. Conducted emissions were investigated over the frequency range from 0.15MHz to 30MHz using a receiver bandwidth of 9 kHz.
8. During the above scans, the emissions were maximized by cable manipulation.

### TEST MODE

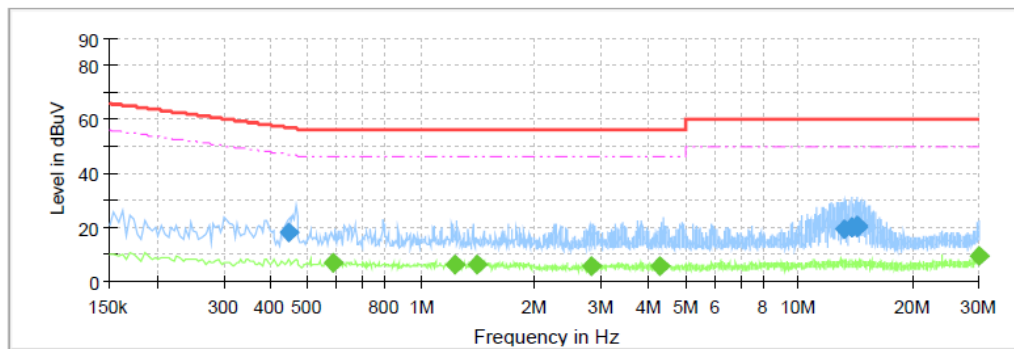
Please refer to the clause 4.2

### TEST RESULT

☒ Passed ☐ Not Applicable

Test Line:

L

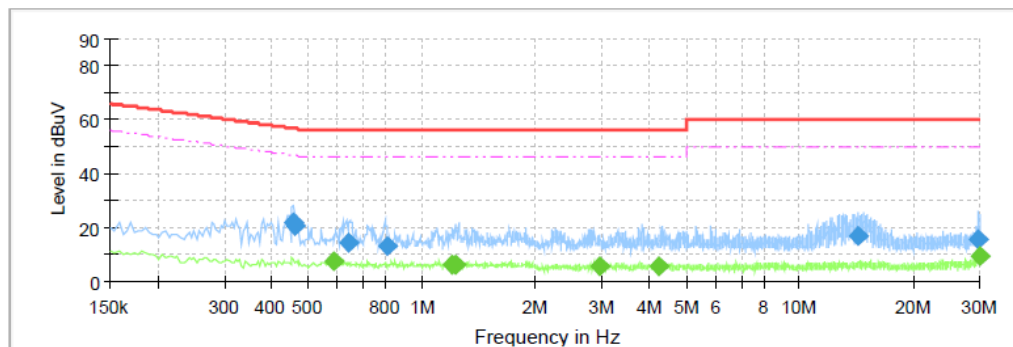


### Final Result

Frequency (MHz)	QuasiPeak (dBuV)	CAverage (dBuV)	Limit (dBuV)	Margin (dB)	Line	Corr. (dB)
0.447500	18.40	---	56.92	38.52	L1	10.1
0.587500	---	7.06	46.00	38.94	L1	10.1
1.227500	---	6.21	46.00	39.79	L1	10.1
1.407500	---	6.10	46.00	39.90	L1	10.1
2.815500	---	5.48	46.00	40.52	L1	10.2
4.299500	---	5.71	46.00	40.29	L1	10.2
13.235500	19.57	---	60.00	40.43	L1	10.5
13.731500	19.97	---	60.00	40.03	L1	10.5
13.771500	20.24	---	60.00	39.76	L1	10.5
14.275500	20.48	---	60.00	39.52	L1	10.5
14.335500	20.15	---	60.00	39.85	L1	10.5
29.839500	---	9.07	50.00	40.93	L1	11.0

Test Line:

N



### Final Result

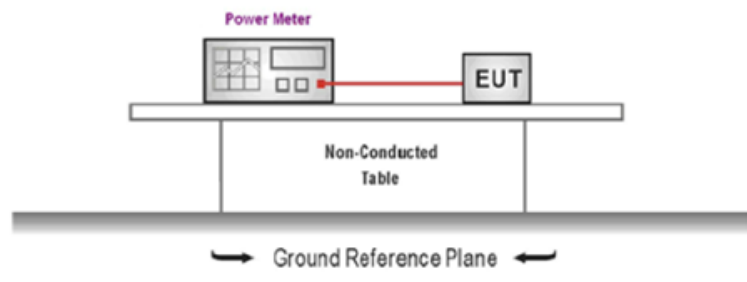
Frequency (MHz)	QuasiPeak (dBuV)	CAverage (dBuV)	Limit (dBuV)	Margin (dB)	Line	Corr. (dB)
0.455500	21.61	---	56.77	35.16	N	10.1
0.463500	20.40	---	56.63	36.23	N	10.1
0.583500	---	7.53	46.00	38.47	N	10.1
0.639500	14.60	---	56.00	41.40	N	10.1
0.807500	12.82	---	56.00	43.18	N	10.1
1.203500	---	6.45	46.00	39.55	N	10.1
1.227500	---	6.54	46.00	39.46	N	10.1
2.959500	---	5.47	46.00	40.53	N	10.1
4.231500	---	5.49	46.00	40.51	N	10.2
14.251500	16.79	---	60.00	43.21	N	10.4
29.823500	15.56	---	60.00	44.44	N	10.8
29.983500	---	9.54	50.00	40.46	N	10.8

### 5.3. Peak Output Power

#### LIMIT

FCC CFR Title 47 Part 15 Subpart C Section 15.247 (b)(3): 30dBm

#### TEST CONFIGURATION



#### TEST PROCEDURE

1. The EUT was tested according to ANSI C63.10 and KDB 558074 D01 requirements.
2. The maximum peak conducted output power may be measured using a broadband peak RF power meter.
3. The power meter shall have a video bandwidth that is greater than or equal to the DTS bandwidth and shall utilize a fast-responding diode detector.
4. Record the measurement data.

#### TEST MODE

Please refer to the clause 4.2

#### TEST RESULT

☒ Passed      ☐ Not Applicable

#### TEST DATA

Please refer to appendix A on the appendix report

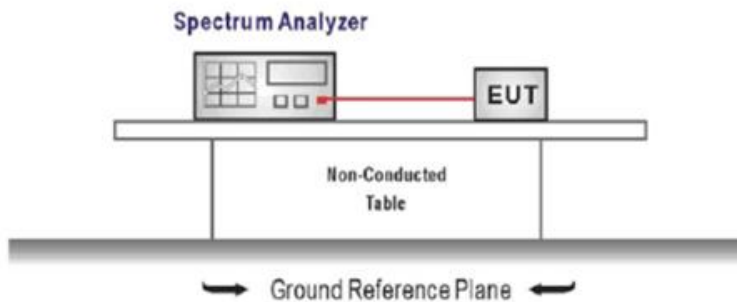
## 5.4. Power Spectral Density

### LIMIT

#### FCC CFR Title 47 Part 15 Subpart C Section 15.247 (e):

For digitally modulated systems, the power spectral density conducted from the intentional radiator to the antenna shall not be greater than 8dBm in any 3 kHz band during any time interval of continuous transmission.

### TEST CONFIGURATION



### TEST PROCEDURE

1. Connect the antenna port(s) to the spectrum analyzer input,
2. Configure the spectrum analyzer as shown below:  
Center frequency=DTS channel center frequency  
Span =1.5 times the DTS bandwidth  
 $RBW = 3 \text{ kHz} \leq RBW \leq 100 \text{ kHz}$ ,  $VBW \geq 3 \times RBW$   
Sweep time = auto couple  
Detector = peak  
Trace mode = max hold
3. Place the radio in continuous transmit mode, allow the trace to stabilize, view the transmitter wave form on the spectrum analyzer.
4. Use the peak marker function to determine the maximum amplitude level within the RBW.
5. If measured value exceeds limit, reduce RBW (no less than 3 kHz) and repeat.

### TEST MODE

Please refer to the clause 4.2

### TEST RESULT

☒ Passed      ☐ Not Applicable

### TEST DATA

Please refer to appendix B on the appendix report

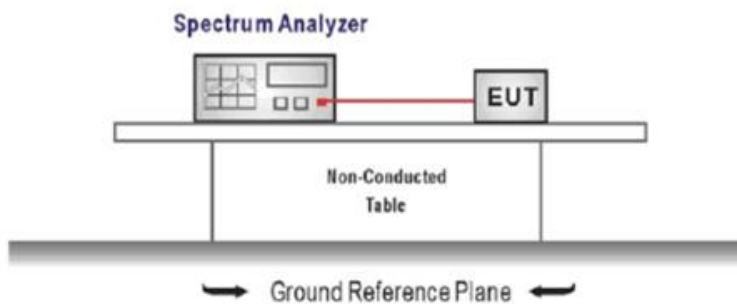
## 5.5. 6dB bandwidth

### LIMIT

FCC CFR Title 47 Part 15 Subpart C Section 15.247 (a)(2):

For digital modulation systems, the minimum 6 dB bandwidth shall be at least 500 kHz.

### TEST CONFIGURATION



### TEST PROCEDURE

1. Connect the antenna port(s) to the spectrum analyzer input.
2. Configure the spectrum analyzer as shown below (enter all losses between the transmitter output and the spectrum analyzer).  
Center Frequency = DTS channel center frequency  
Span = 2 x DTS bandwidth  
RBW = 100 kHz, VBW  $\geq 3 \times$  RBW  
Sweep time = auto couple  
Detector = Peak  
Trace mode = max hold
3. Place the radio in continuous transmit mode, allow the trace to stabilize, view the transmitter waveform on the spectrum analyzer.
4. Measure the maximum width of the emission that is constrained by the frequencies associated with the two outermost amplitude points (upper and lower frequencies) that are attenuated by 6 dB relative to the maximum level measured in the fundamental emission, and record the pertinent measurements.

### TEST MODE

Please refer to the clause 4.2

### TEST RESULT

☒ Passed ☐ Not Applicable

### TEST DATA

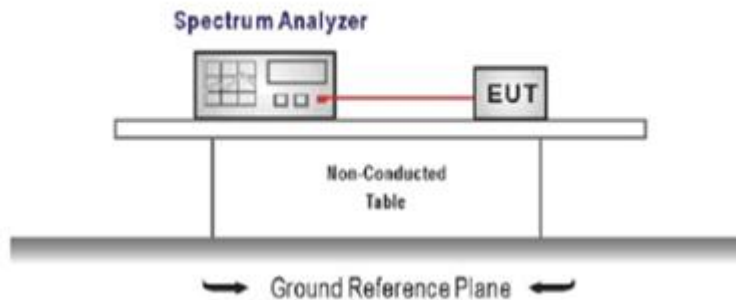
Please refer to appendix C on the appendix report

## 5.6. 99% Occupied Bandwidth

### LIMIT

N/A

### TEST CONFIGURATION



### TEST PROCEDURE

1. Connect the antenna port(s) to the spectrum analyzer input.
2. Configure the spectrum analyzer as shown below (enter all losses between the transmitter output and the spectrum analyzer).  
Center Frequency = channel center frequency  
Span  $\geq 1.5 \times \text{OBW}$   
RBW = 1%~5%OBW  
VBW  $\geq 3 \times \text{RBW}$   
Sweep time = auto couple  
Detector = Peak  
Trace mode = max hold
3. Place the radio in continuous transmit mode, allow the trace to stabilize, view the transmitter waveform on the spectrum analyzer.

### TEST MODE

Please refer to the clause 4.2

### TEST RESULT

☒ Passed ☐ Not Applicable

### TEST DATA

Please refer to appendix D on the appendix report

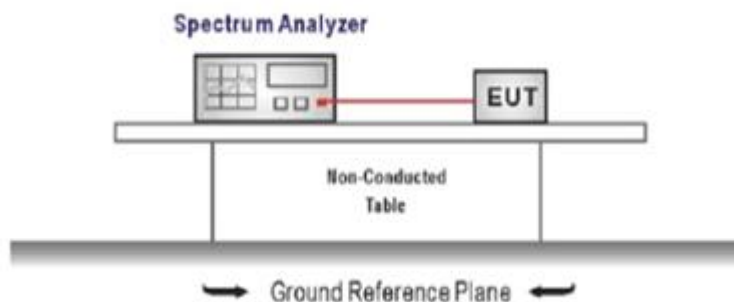


## 5.7. Duty Cycle

### LIMIT

N/A

### TEST CONFIGURATION



### TEST PROCEDURE

1. The transmitter output was connected to the spectrum analyzer through an attenuator, the path loss was compensated to the results for each measurement.
2. Set to the maximum power setting and enable the EUT transmit continuously
3. Use the following spectrum analyzer settings:  
Span=zero span, Frequency=centered channel, RBW= 1 MHz, VBW  $\geq$  RBW  
Sweep=as necessary to capture the entire dwell time,  
Detector function = peak, Trigger mode
4. Measure and record the duty cycle data

### TEST MODE

Please refer to the clause 4.2

### TEST DATA

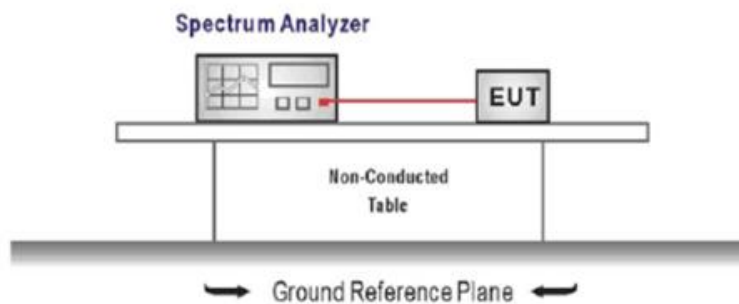
Please refer to appendix E on the appendix report

## 5.8. Conducted Band edge and Spurious Emission

### LIMIT

**FCC CFR Title 47 Part 15 Subpart C Section 15.247 (d):** In any 100 kHz bandwidth outside the frequency band in which the spread spectrum intentional radiator is operating, the radio frequency power that is produced by the intentional radiator shall be at least 20 dB below that in the 100 kHz bandwidth within the band that contains the highest level of the desired power, based on either an RF conducted or a radiated measurement.

### TEST CONFIGURATION



### TEST PROCEDURE

1. Connect the antenna port(s) to the spectrum analyzer input.
2. Emission level measurement  
Set the center frequency and span to encompass frequency range to be measured  
RBW = 100 kHz, VBW  $\geq 3 \times$  RBW  
Detector = peak, Sweep time = auto couple, Trace mode = max hold  
Allow trace to fully stabilize  
Use the peak marker function to determine the maximum amplitude level.
3. Place the radio in continuous transmit mode, allow the trace to stabilize, view the transmitter waveform on the spectrum analyzer.
4. Ensure that the amplitude of all unwanted emission outside of the authorized frequency band excluding restricted frequency bands) are attenuated by at least the minimum requirements specified (at least 20 dB relative to the maximum in-band peak PSD level in 100 kHz). Report the three highest emission relative to the limit.

### TEST MODE

Please refer to the clause 4.2

### TEST RESULT

☒ Passed ☐ Not Applicable

### TEST DATA

Please refer to appendix F on the appendix report

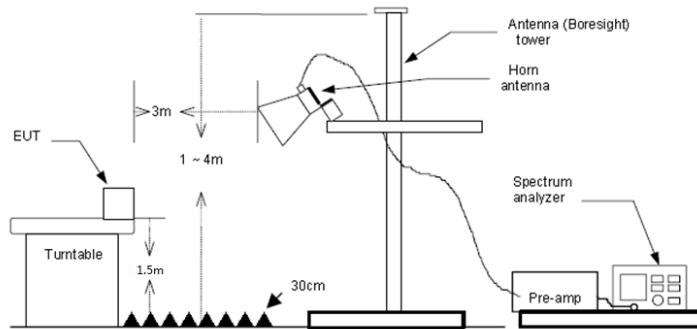
## 5.9. Radiated Band edge Emission

### LIMIT

#### FCC CFR Title 47 Part 15 Subpart C Section 15.247 (d):

In any 100 kHz bandwidth outside the frequency band in which the spread spectrum or digitally modulated intentional radiator is operating, Radiated Emissions which fall in the restricted bands, as defined in §15.205(a), must also comply with the Radiated Emissions limits specified in §15.209(a) (see §15.205(c)).

### TEST CONFIGURATION



### TEST PROCEDURE

1. The EUT was setup and tested according to ANSI C63.10 .
2. The EUT is placed on a turn table which is 1.5 meter above ground. The turn table is rotated 360 degrees to determine the position of the maximum emission level.
3. The EUT was positioned such that the distance from antenna to the EUT was 3 meters.
4. The antenna is scanned from 1 meter to 4 meters to find out the maximum emission level. This is repeated for both horizontal and vertical polarization of the antenna. In order to find the maximum emission, all of the interface cables were manipulated according to ANSI C63.10 on radiated measurement.
5. Use the following spectrum analyzer settings:
  - a) Span shall wide enough to fully capture the emission being measured
  - b) Set RBW=100kHz for <1GHz, VBW=3\*RBW, Sweep time=auto, Detector=peak, Trace=max hold
  - c) Set RBW=1MHz, VBW=3MHz for >1GHz, Sweep time=auto, Detector=peak, Trace=max hold for Peak measurement

For average measurement:

  - VBW=10Hz, When duty cycle is no less than 98 percent
  - VBW $\geq 1/T$ , when duty cycle is less than 98 percent where T is the minimum transmission duration over which the transmitter is on and is transmitting at its maximum power control level for the tested mode of operation, so refer to this clause 5.6 duty cycle.

### TEST MODE

Please refer to the clause 4.2

### TEST RESULT

☒ Passed ☐ Not Applicable

Note:

- 1) Level= Reading + Factor; Factor =Antenna Factor+ Cable Loss- Preamp Factor
- 2) Over Limit = Level– Limit
- 3) Average measurement was not performed if peak level is lower than average limit(54 dBuV/m).

Test channel		CH00			Polarity			Horizontal	
Mark	Frequency MHz	Reading dBuV/m	Antenna dB	Cable dB	Preamp dB	Level dBuV/m	Limit dBuV/m	Over limit	Remark
1	2310.00	41.88	27.96	3.89	37.56	36.17	74.00	-37.83	Peak
2	2378.85	48.74	27.74	3.98	37.48	42.98	74.00	-31.02	Peak
3	2390.03	44.28	27.72	3.99	37.45	38.54	74.00	-35.46	Peak
Mark	Frequency MHz	Reading dBuV/m	Antenna dB	Cable dB	Preamp dB	Level dBuV/m	Limit dBuV/m	Over limit	Remark
1	2310.00	31.86	27.96	3.89	37.56	26.15	54.00	-27.85	Average
2	2378.46	39.88	27.74	3.97	37.48	34.11	54.00	-19.89	Average
3	2390.03	35.79	27.72	3.99	37.45	30.05	54.00	-23.95	Average

Test channel		CH00			Polarity			Vertical	
Mark	Frequency MHz	Reading dBuV/m	Antenna dB	Cable dB	Preamp dB	Level dBuV/m	Limit dBuV/m	Over limit	Remark
1	2310.00	41.11	27.96	3.89	37.56	35.40	74.00	-38.60	Peak
2	2324.78	47.49	27.90	3.91	37.55	41.75	74.00	-32.25	Peak
3	2390.03	42.80	27.72	3.99	37.45	37.06	74.00	-36.94	Peak
Mark	Frequency MHz	Reading dBuV/m	Antenna dB	Cable dB	Preamp dB	Level dBuV/m	Limit dBuV/m	Over limit	Remark
1	2310.00	32.36	27.96	3.89	37.56	26.65	54.00	-27.35	Average
2	2381.69	35.17	27.74	3.98	37.47	29.42	54.00	-24.58	Average
3	2390.03	33.59	27.72	3.99	37.45	27.85	54.00	-26.15	Average

Test channel		CH39			Polarity			Horizontal	
Mark	Frequency MHz	Reading dBuV/m	Antenna dB	Cable dB	Preamp dB	Level dBuV/m	Limit dBuV/m	Over limit	Remark
1	2483.50	53.56	27.43	4.03	37.26	47.76	74.00	-26.24	Peak
2	2483.60	54.44	27.43	4.03	37.26	48.64	74.00	-25.36	Peak
3	2500.00	50.36	27.40	4.04	37.26	44.54	74.00	-29.46	Peak
Mark	Frequency MHz	Reading dBuV/m	Antenna dB	Cable dB	Preamp dB	Level dBuV/m	Limit dBuV/m	Over limit	Remark
1	2483.50	48.78	27.43	4.03	37.26	42.98	54.00	-11.02	Average
2	2500.00	41.83	27.40	4.04	37.26	36.01	54.00	-17.99	Average

Test channel		CH39			Polarity			Vertical	
Mark	Frequency MHz	Reading dBuV/m	Antenna dB	Cable dB	Preamp dB	Level dBuV/m	Limit dBuV/m	Over limit	Remark
1	2483.50	49.40	27.43	4.03	37.26	43.60	74.00	-30.40	Peak
2	2483.87	50.95	27.43	4.03	37.26	45.15	74.00	-28.85	Peak
3	2500.00	48.01	27.40	4.04	37.26	42.19	74.00	-31.81	Peak
Mark	Frequency MHz	Reading dBuV/m	Antenna dB	Cable dB	Preamp dB	Level dBuV/m	Limit dBuV/m	Over limit	Remark
1	2483.50	44.86	27.43	4.03	37.26	39.06	54.00	-14.94	Average
2	2500.00	37.57	27.40	4.04	37.26	31.75	54.00	-22.25	Average

## 5.10. Radiated Spurious Emission

### LIMIT

#### FCC CFR Title 47 Part 15 Subpart C Section 15.209

Frequency	Limit (dBuV/m)	Value
0.009 MHz ~0.49 MHz	2400/F(kHz) @300m	Quasi-peak
0.49 MHz ~ 1.705 MHz	24000/F(kHz) @30m	Quasi-peak
1.705 MHz ~30 MHz	30 @30m	Quasi-peak

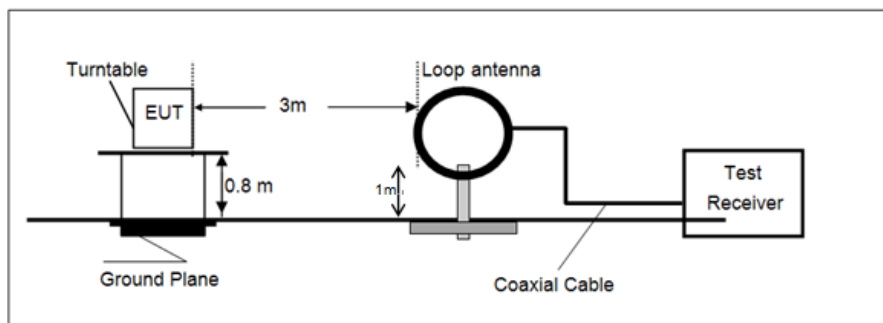
Note: Limit dBuV/m @3m = Limit dBuV/m @300m +  $40 \cdot \log(300/3)$  = Limit dBuV/m @300m +80,

Limit dBuV/m @3m = Limit dBuV/m @30m +  $40 \cdot \log(30/3)$  = Limit dBuV/m @30m + 40.

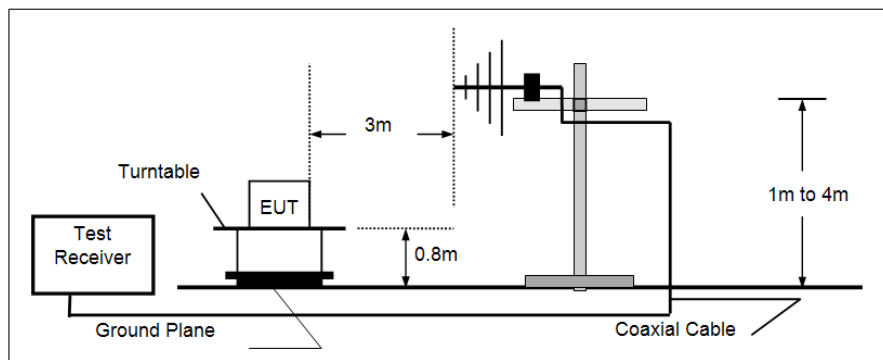
Frequency	Limit (dBuV/m @3m)	Value
30MHz~88MHz	40.00	Quasi-peak
88MHz~216MHz	43.50	Quasi-peak
216MHz~960MHz	46.00	Quasi-peak
960MHz~1GHz	54.00	Quasi-peak
Above 1GHz	54.00	Average
	74.00	Peak

### TEST CONFIGURATION

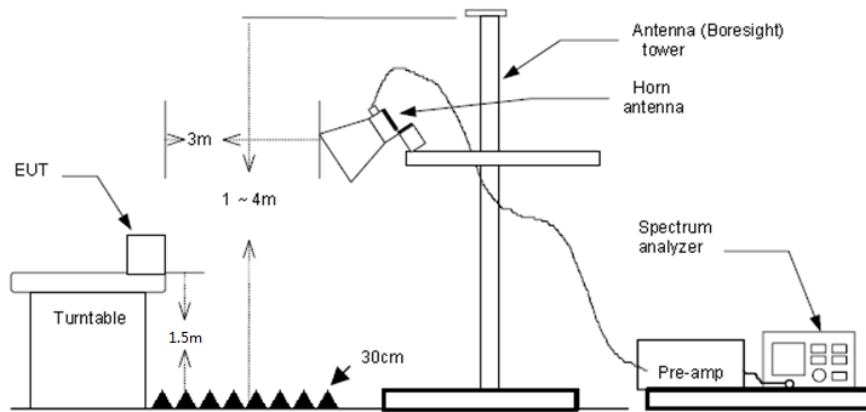
- 9 kHz ~ 30 MHz



- 30 MHz ~ 1 GHz



- Above 1 GHz



### TEST PROCEDURE

1. The EUT was setup and tested according to ANSI C63.10 .
2. The EUT is placed on a turn table which is 0.8 meter above ground for below 1 GHz, and 1.5 m for above 1 GHz. The turn table is rotated 360 degrees to determine the position of the maximum emission level.
3. The EUT was set 3 meters from the receiving antenna, which was mounted on the top of a variable height antenna tower.
4. For each suspected emission, the EUT was arranged to its worst case and then tune the Antenna tower (from 1 m to 4 m) and turntable (from 0 degree to 360 degrees) to find the maximum reading. A pre-amp and a high pass filter are used for the test in order to get better signal level to comply with the guidelines.
5. Set to the maximum power setting and enable the EUT transmit continuously.
6. Use the following spectrum analyzer settings
  - a) Span shall wide enough to fully capture the emission being measured;
  - b) Below 1 GHz:
 

RBW=120 kHz, VBW=300 kHz, Sweep=auto, Detector function=peak, Trace=max hold;

If the emission level of the EUT measured by the peak detector is 3 dB lower than the applicable limit, the peak emission level will be reported. Otherwise, the emission measurement will be repeated using the quasi-peak detector and reported.
  - c) Set RBW=1MHz, VBW=3MHz for >1GHz, Sweep time=auto, Detector=peak, Trace=max hold for Peak measurement

For average measurement:

  - VBW=10Hz, When duty cycle is no less than 98 percent
  - $VBW \geq 1/T$ , when duty cycle is less than 98 percent where T is the minimum transmission duration over which the transmitter is on and is transmitting at its maximum power control level for the tested mode of operation, so refer to this clause 5.6 duty cycle.

### TEST MODE

Please refer to the clause 4.2

### TEST RESULT

☒ Passed ☐ Not Applicable

Note:

- 1) Level= Reading + Factor/Transd; Factor/Transd =Antenna Factor+ Cable Loss- Preamp Factor
- 2) Over Limit = Level– Limit
- 3) Average measurement was not performed if peak level is lower than average limit(54 dBuV/m) for above 1GHz.

**For 9 kHz ~ 30 MHz**

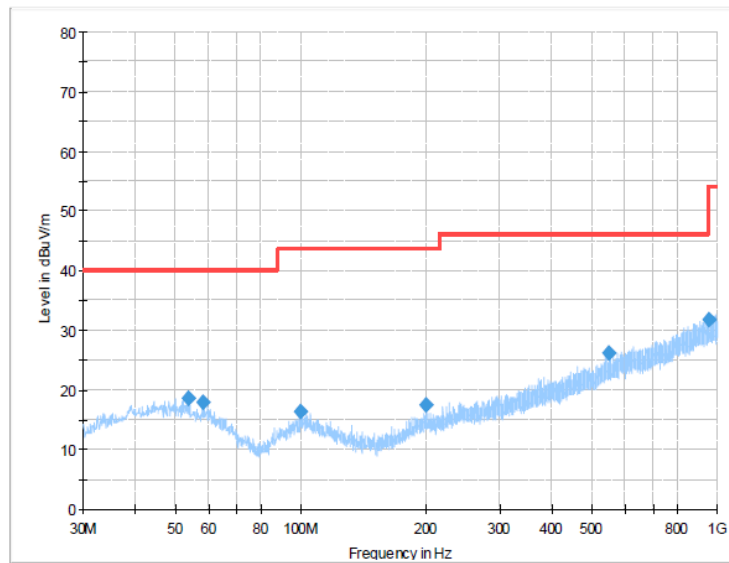
The EUT was pre-scanned this frequency band, found the radiated level 20dB lower than the limit, so don't show data on this report.

**For 30 MHz ~ 1000 MHz**

Have pre-scan all test channel, found CH39 which it was worst case, so only show the worst case's data on this report.

Polarization:

Horizontal



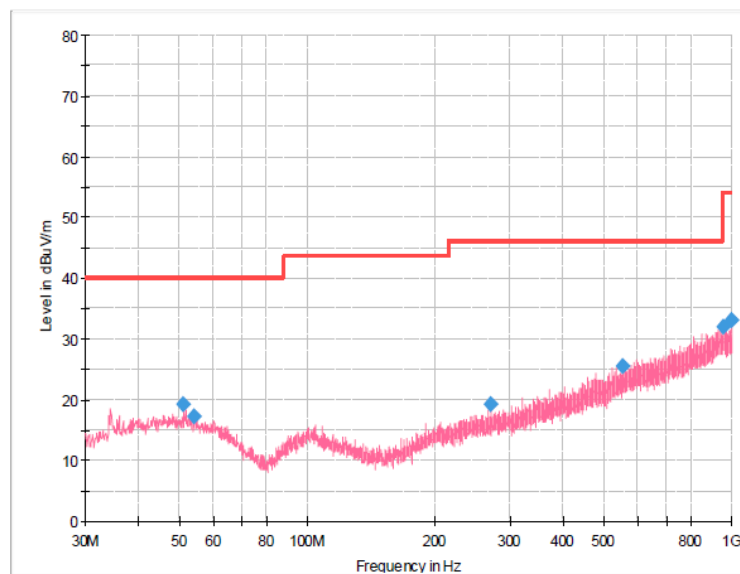
Serif;

**Final Result**

Frequency (MHz)	MaxPeak (dBuV/m)	Limit (dBuV/m)	Margin (dB)	Height (cm)	Pol	Azimuth (deg)	Corr. (dB/m)
53.643750	18.57	40.00	21.43	100.0	H	174.0	-9.4
58.493750	17.83	40.00	22.17	100.0	H	134.0	-9.9
100.082500	16.30	43.50	27.20	300.0	H	21.0	-10.7
199.750000	17.34	43.50	26.16	100.0	H	281.0	-10.1
549.435000	26.07	46.00	19.93	100.0	H	222.0	-0.4
954.895000	31.65	46.00	14.35	300.0	H	0.0	7.3

Polarization:

Vertical



Serif;

**Final Result**

Frequency (MHz)	MaxPeak (dBuV/m)	Limit (dBuV/m)	Margin (dB)	Height (cm)	Pol	Azimuth (deg)	Corr. (dB/m)
51.218750	19.28	40.00	20.72	100.0	V	196.0	-9.2
54.128750	17.13	40.00	22.87	100.0	V	32.0	-9.5
270.923750	19.28	46.00	26.72	100.0	V	90.0	-8.4
552.587500	25.52	46.00	20.48	100.0	V	237.0	-0.3
956.471250	32.01	46.00	13.99	100.0	V	149.0	7.3
999.515000	33.00	54.00	21.00	100.0	V	167.0	7.9



**For 1 GHz ~ 25 GHz**

Test channel		CH00			Polarity			Horizontal	
Mark	Frequency MHz	Reading dBuV/m	Antenna dB	Cable dB	Preamp dB	Level dBuV/m	Limit dBuV/m	Over limit	Remark
1	1995.76	48.83	26.08	3.61	37.06	41.46	74.00	-32.54	Peak
2	2505.38	48.58	27.40	4.06	37.25	42.79	74.00	-31.21	Peak
3	7209.02	39.45	36.48	7.23	34.01	49.15	74.00	-24.85	Peak
4	9834.41	38.11	39.53	8.50	36.42	49.72	74.00	-24.28	Peak

Test channel		CH00			Polarity			Vertical	
Mark	Frequency MHz	Reading dBuV/m	Antenna dB	Cable dB	Preamp dB	Level dBuV/m	Limit dBuV/m	Over limit	Remark
1	1829.86	50.66	25.52	3.44	37.06	42.56	74.00	-31.44	Peak
2	2127.07	52.70	27.43	3.71	37.31	46.53	74.00	-27.47	Peak
3	5762.24	46.34	31.92	6.63	34.86	50.03	74.00	-23.97	Peak
4	9611.66	39.26	39.25	8.60	37.01	50.10	74.00	-23.90	Peak

Test channel		CH19			Polarity			Horizontal	
Mark	Frequency MHz	Reading dBuV/m	Antenna dB	Cable dB	Preamp dB	Level dBuV/m	Limit dBuV/m	Over limit	Remark
1	1995.76	48.83	26.08	3.61	37.06	41.46	74.00	-32.54	Peak
2	2505.38	48.58	27.40	4.06	37.25	42.79	74.00	-31.21	Peak
3	7319.96	40.47	36.44	7.30	34.10	50.11	74.00	-23.89	Peak
4	9759.59	38.58	39.60	8.44	36.29	50.33	74.00	-23.67	Peak

Test channel		CH19			Polarity			Vertical	
Mark	Frequency MHz	Reading dBuV/m	Antenna dB	Cable dB	Preamp dB	Level dBuV/m	Limit dBuV/m	Over limit	Remark
1	1829.86	50.66	25.52	3.44	37.06	42.56	74.00	-31.44	Peak
2	2127.07	52.70	27.43	3.71	37.31	46.53	74.00	-27.47	Peak
3	5762.24	45.35	31.92	6.63	34.86	49.04	74.00	-24.96	Peak
4	9759.59	38.91	39.60	8.44	36.29	50.66	74.00	-23.34	Peak

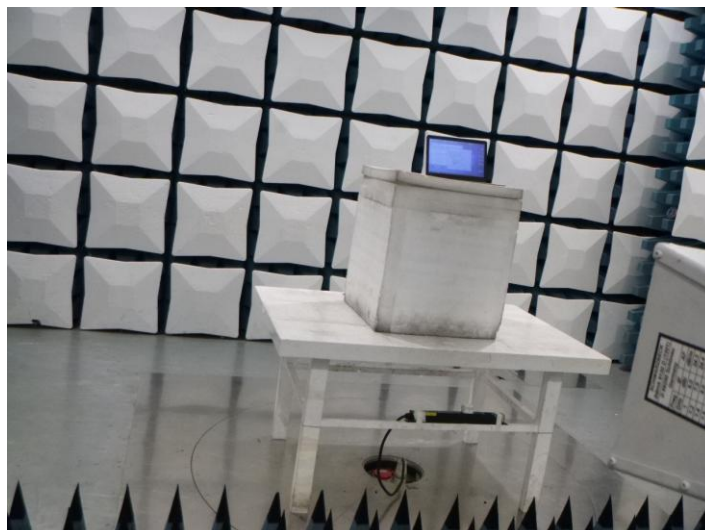
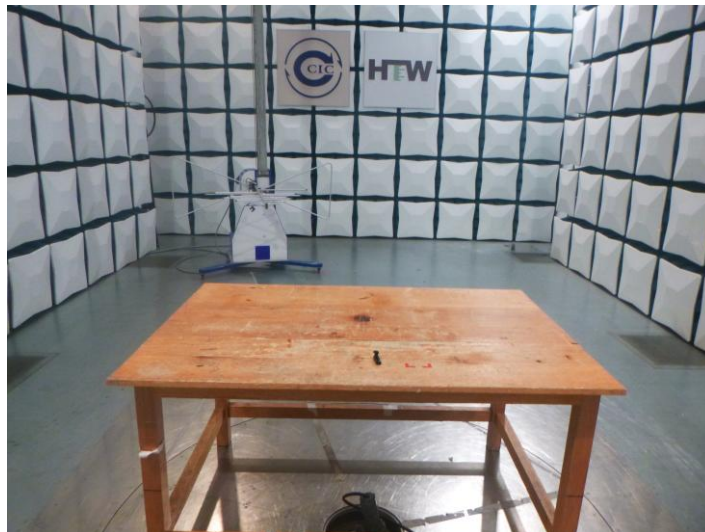
Test channel		CH39			Polarity			Horizontal	
Mark	Frequency MHz	Reading dBuV/m	Antenna dB	Cable dB	Preamp dB	Level dBuV/m	Limit dBuV/m	Over limit	Remark
1	1995.76	48.83	26.08	3.61	37.06	41.46	74.00	-32.54	Peak
2	2505.38	48.58	27.40	4.06	37.25	42.79	74.00	-31.21	Peak
3	7432.62	40.06	36.60	7.33	33.98	50.01	74.00	-23.99	Peak
4	9809.40	37.38	39.58	8.46	36.19	49.23	74.00	-24.77	Peak

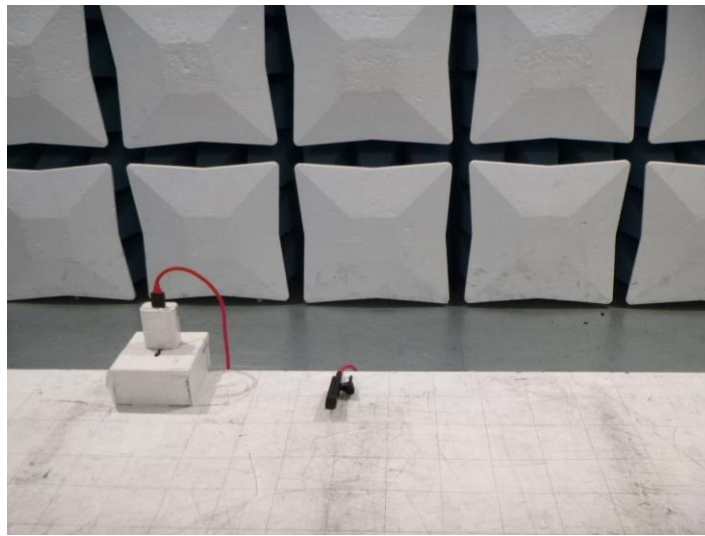
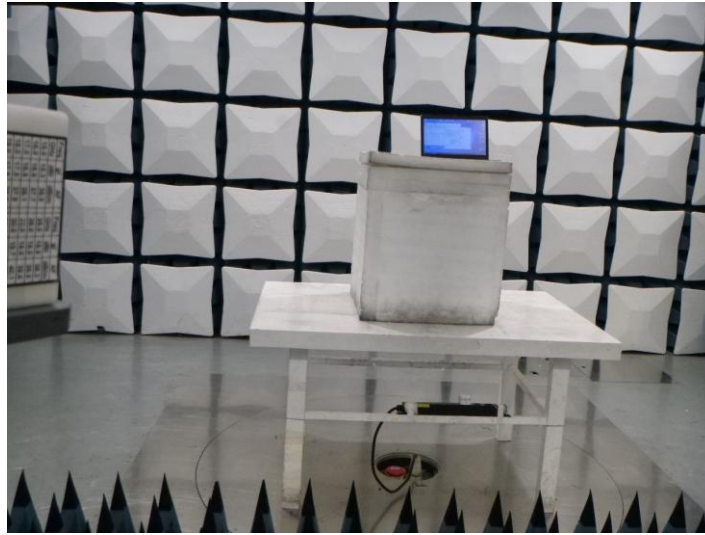
  

Test channel		CH39			Polarity			Vertical	
Mark	Frequency MHz	Reading dBuV/m	Antenna dB	Cable dB	Preamp dB	Level dBuV/m	Limit dBuV/m	Over limit	Remark
1	1829.86	50.66	25.52	3.44	37.06	42.56	74.00	-31.44	Peak
2	2127.07	52.70	27.43	3.71	37.31	46.53	74.00	-27.47	Peak
3	5762.24	45.90	31.92	6.63	34.86	49.59	74.00	-24.41	Peak
4	9935.05	39.24	39.57	8.72	37.33	50.20	74.00	-23.80	Peak

## 6. TEST SETUP PHOTOS

### Radiated Emission





#### AC Conducted Emission

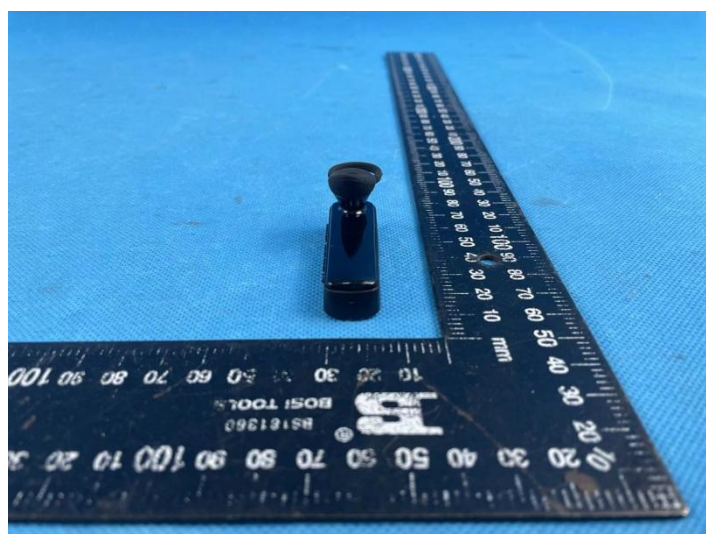




## 7. EXTERNAL AND INTERNAL PHOTOS

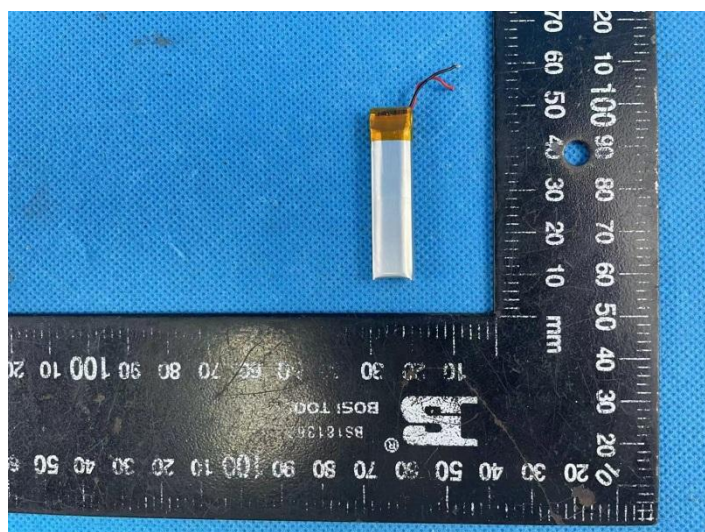
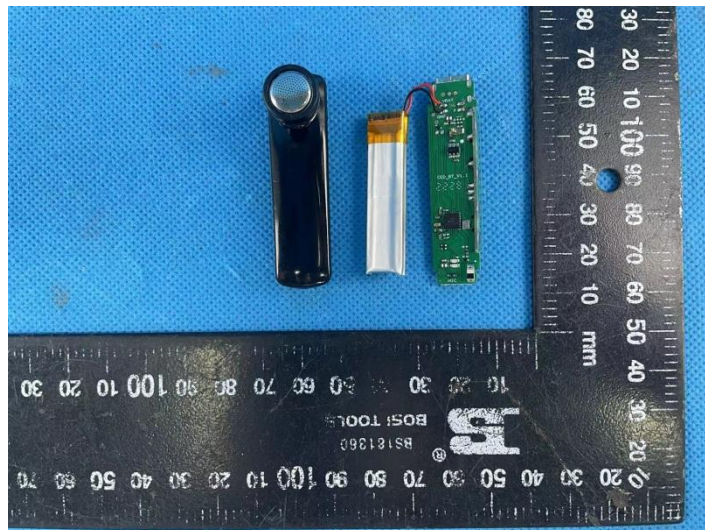
### External Photos of the EUT



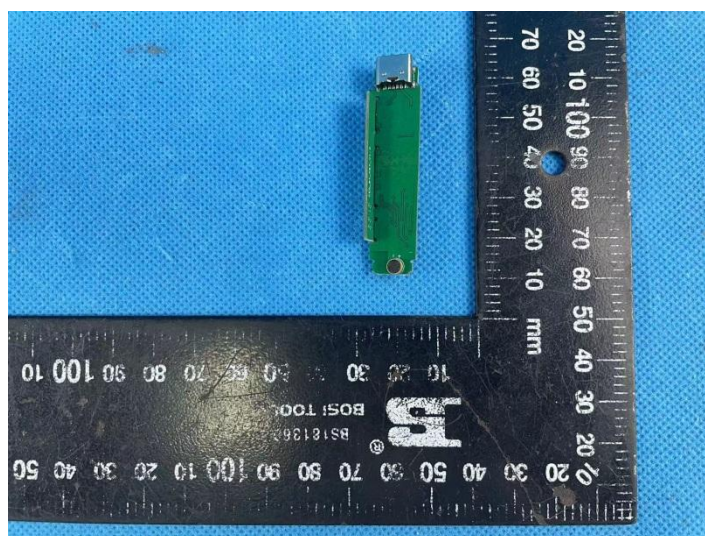
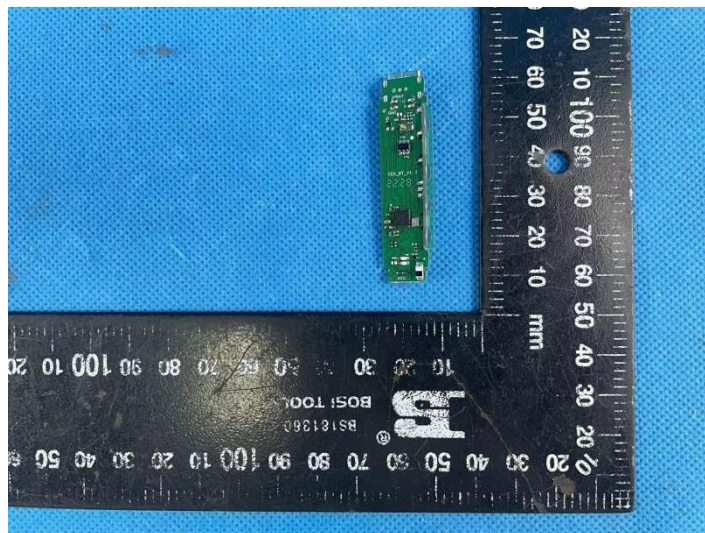
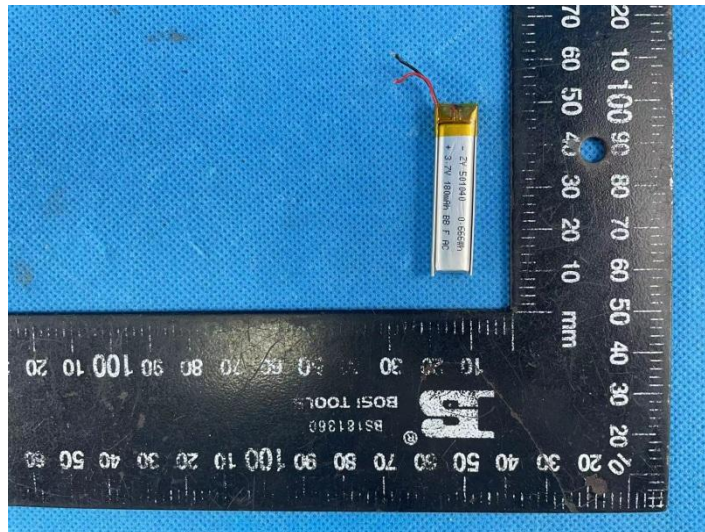


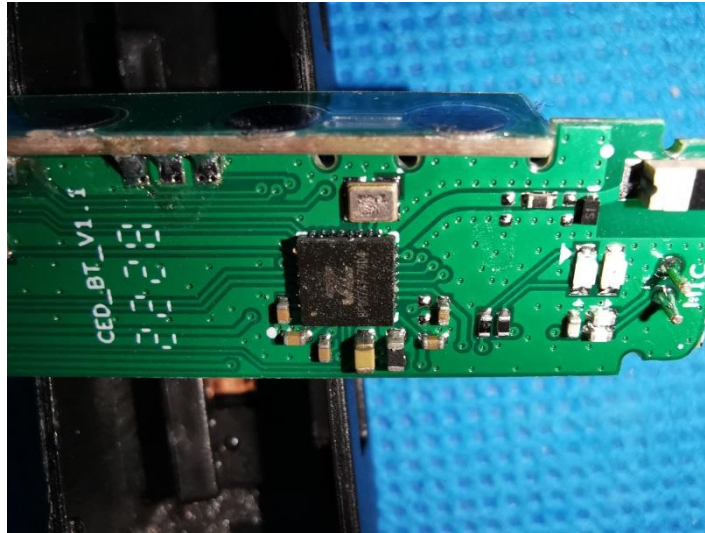


### Internal Photos of the EUT









## 8. APPENDIX REPORT



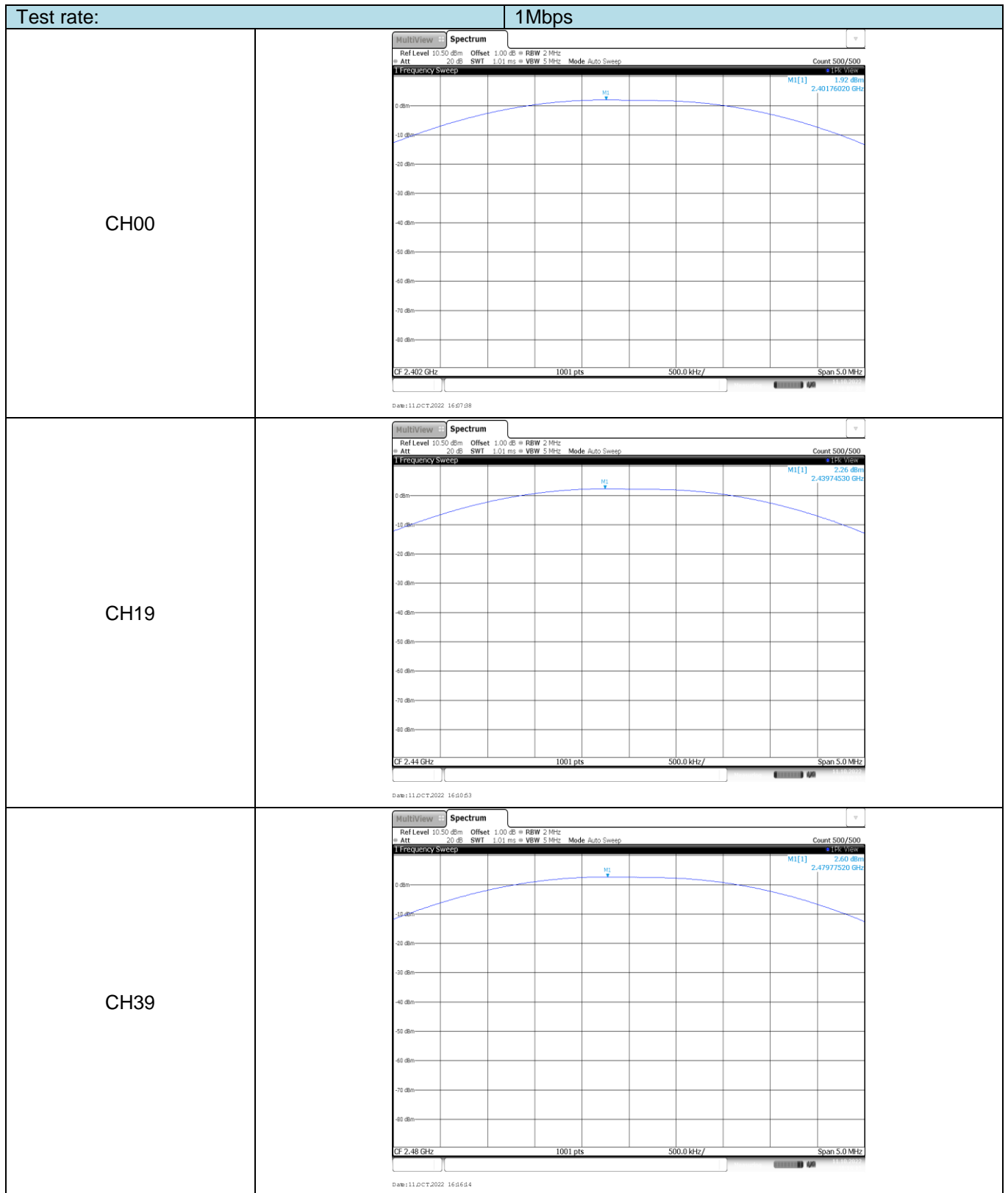
# APPENDIX REPORT

Project No.	SHT2209084902EW	Radio Specification	Bluetooth BLE
Test sample No.	YPHT22090849003	Model No.	EB121
Start test date	2022-10-11	Finish date	2022-10-12
Temperature	24.6℃	Humidity	28%
Test Engineer	Xiaoxiao Li	Auditor	Xiaodong Zheo

Appendix clause	Test item	Result
A	Peak Output Power	PASS
B	Power Spectral Density	PASS
C	6 dB Bandwidth	PASS
D	99% Occupied Bandwidth	PASS
E	Duty cycle	PASS
F	Band edge and Spurious Emissions (conducted)	PASS

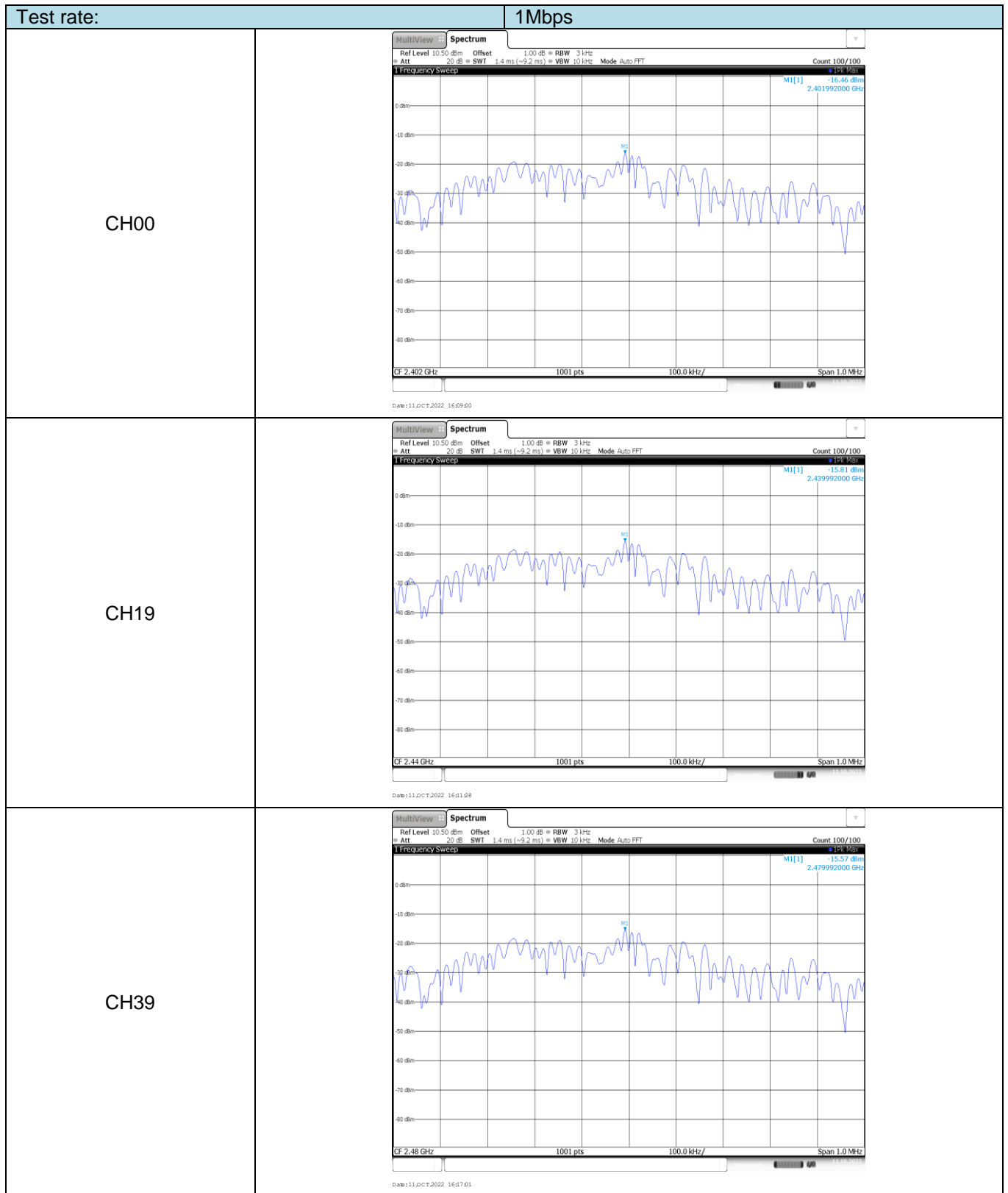
**Appendix A: Peak Output Power**

Test rate	Channel	Peak Output power (dBm)	Average Output power (dBm)	Limit (dBm)	Result
1Mbps	00	1.92	1.86	≤ 30.00	Pass
	19	2.26	2.20		
	39	2.60	2.55		



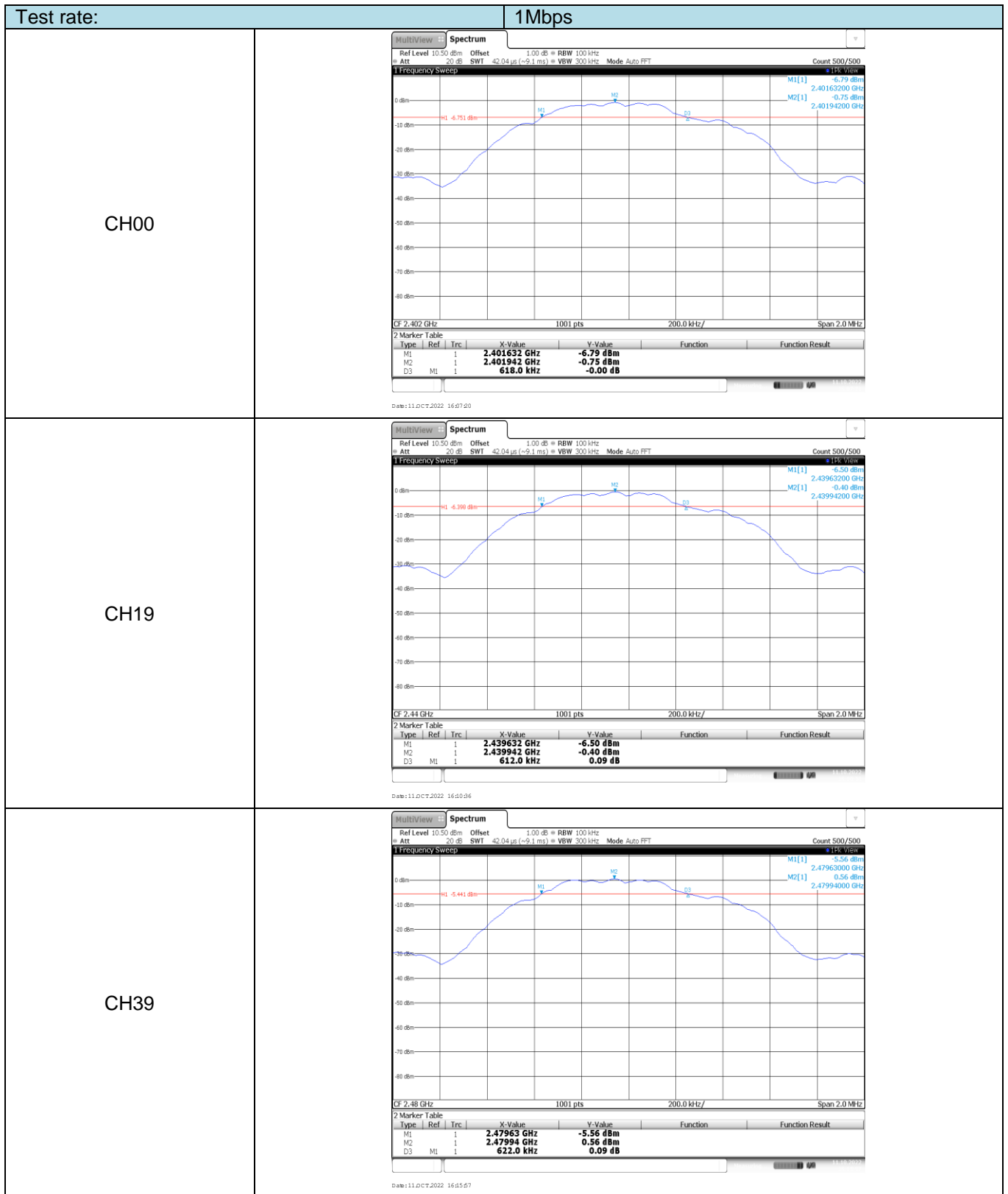
**Appendix B: Power Spectral Density**

Test rate	Channel	Power Spectral Density(dBm/3KHz)	Limit (dBm/3KHz)	Result
1Mbps	00	-16.46	≤8.00	Pass
	19	-15.81		
	39	-15.57		



**Appendix C: 6dB bandwidth**

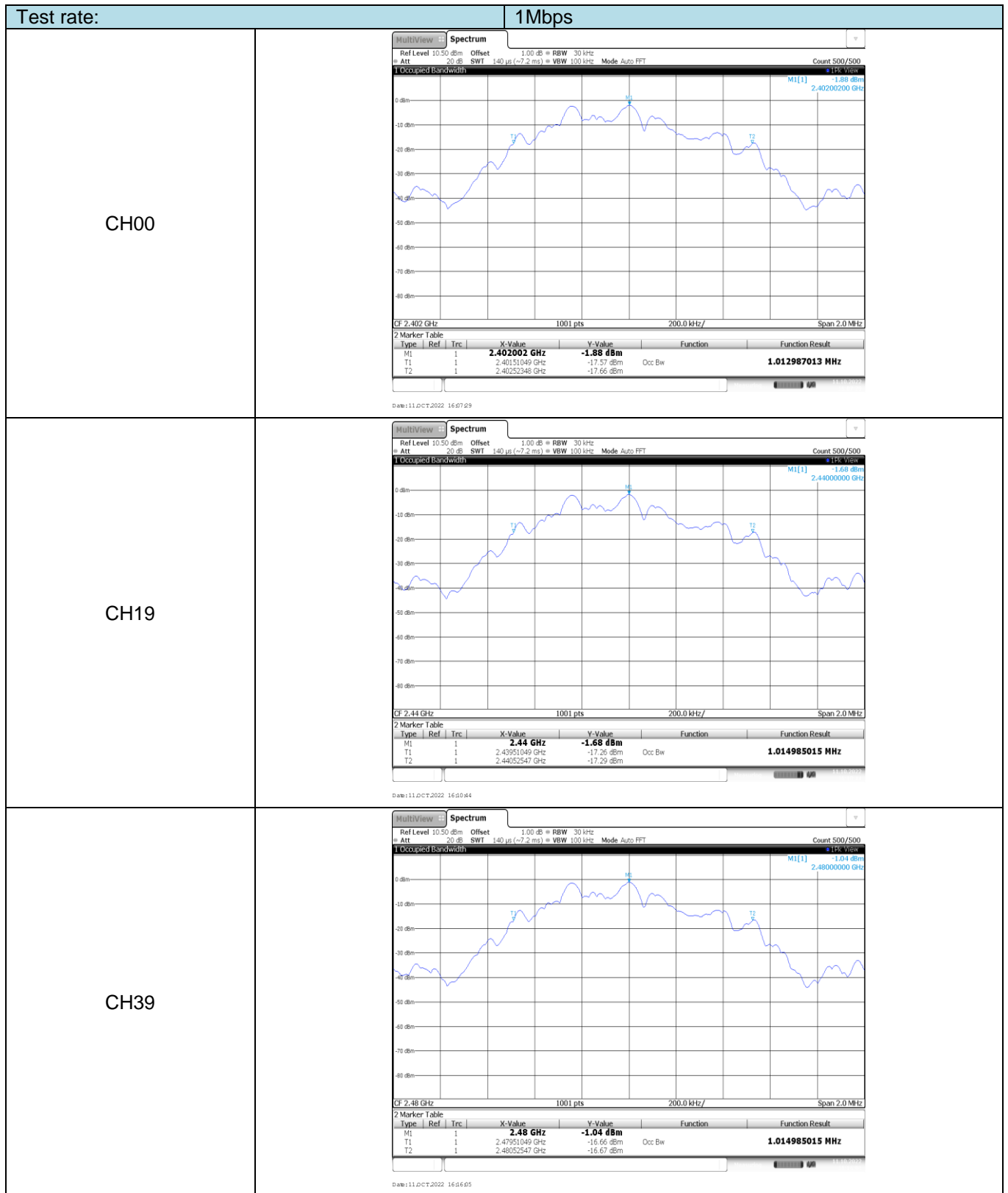
Type	Channel	6dB Bandwidth(kHz)	Limit (kHz)	Result
1Mbps	00	618.00	≥500	Pass
	19	612.00		
	39	622.00		

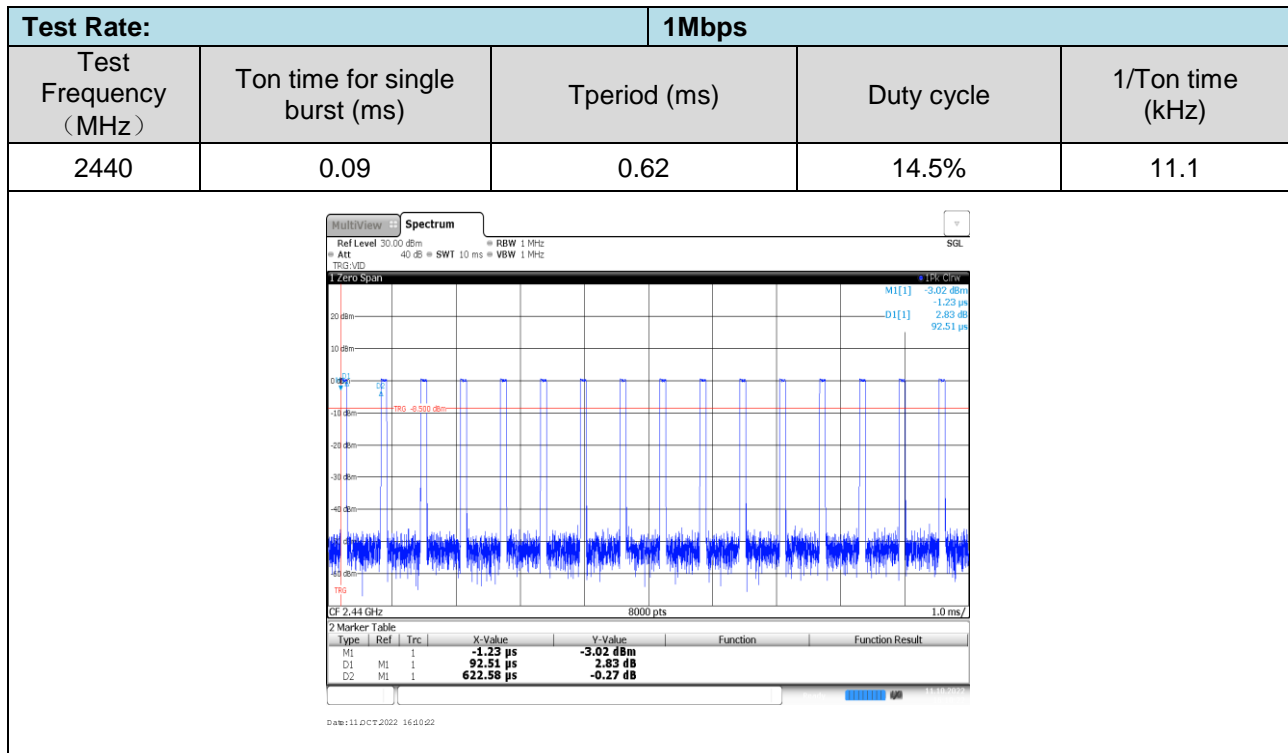


**Appendix D: 99% Occupied Bandwidth**

Test rate	Channel	99% Occupied Bandwidth(MHz)	Limit (kHz)	Result
1Mbps	00	1.01	-	Pass
	19	1.01		
	39	1.01		

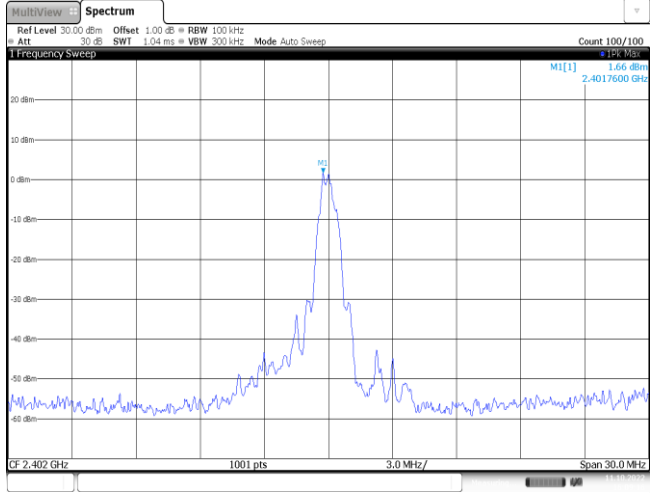
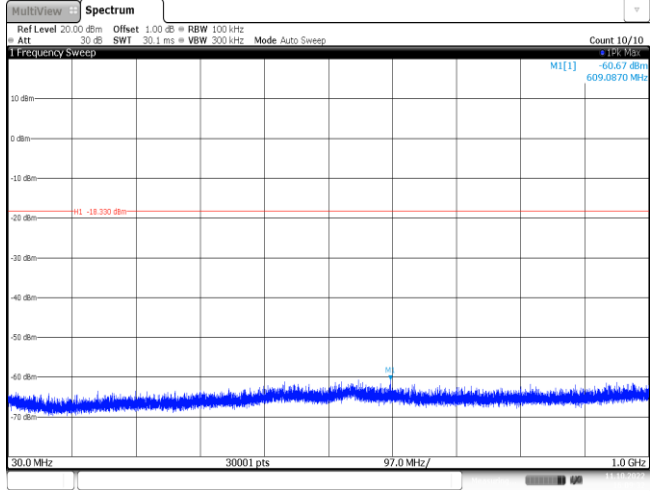
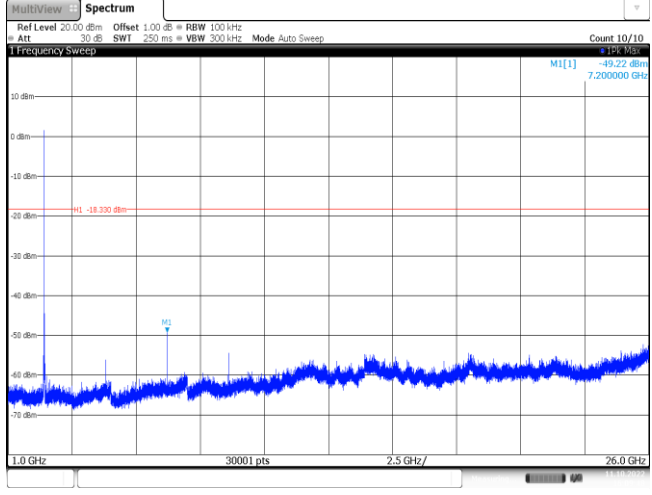


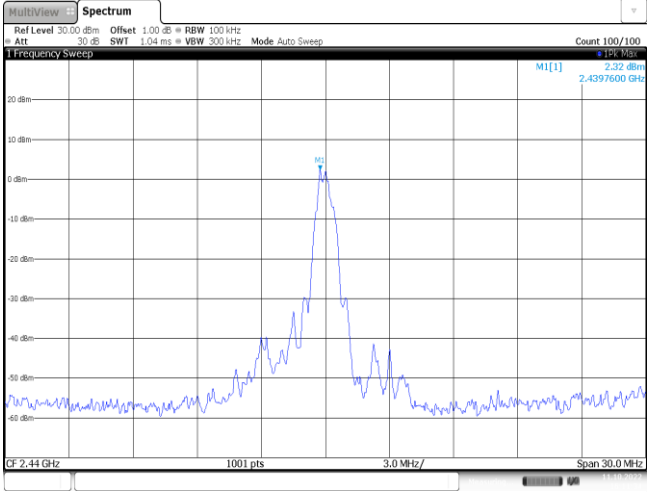
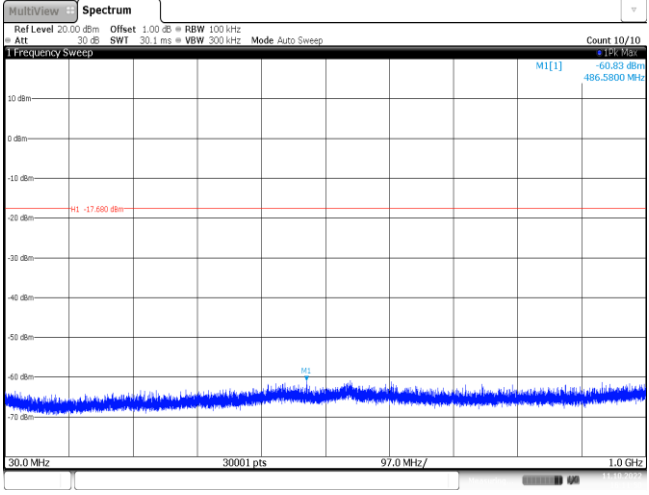
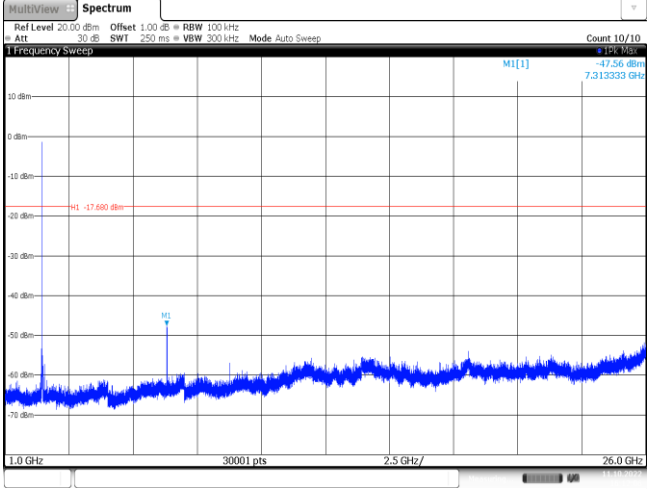


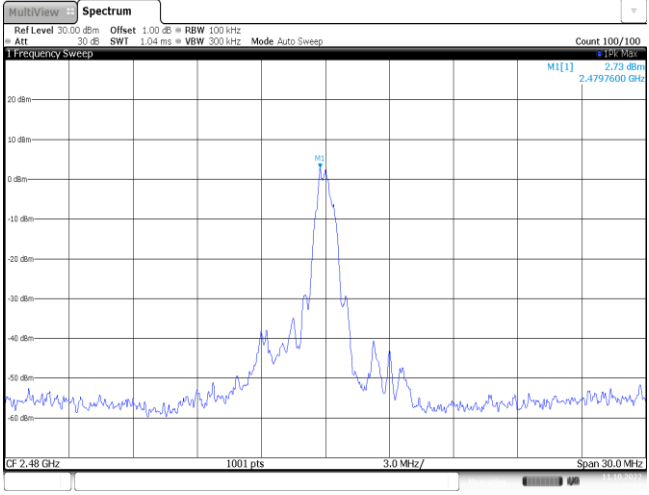
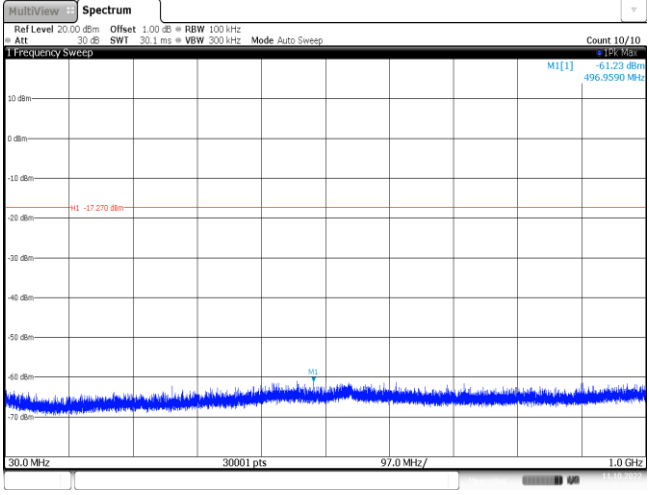
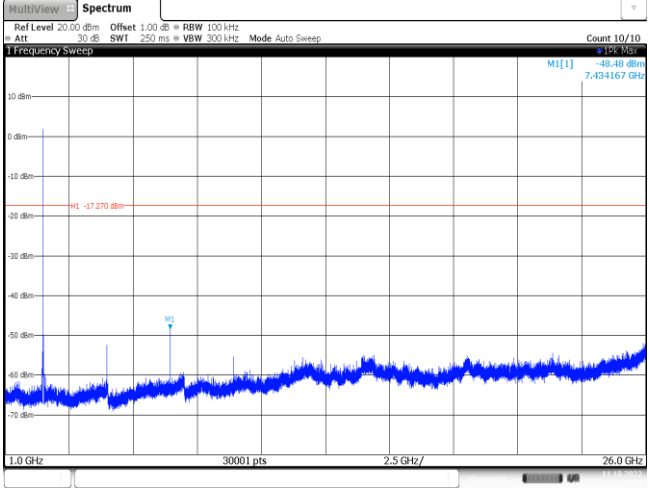
**Appendix E: Duty cycle**

## Appendix F: Band edge and Spurious Emissions (conducted)

Test Item:	Band edge	Test Rate:	1Mbps																																										
CH00	<div><div><div><div><div>MultiView</div><div>Spectrum</div><div>Ref Level 10.50 dBm Offset 1.00 dB RBW 100 kHz</div><div>Att 20 dB SW 1.05 ms VBW 300 kHz Mode Auto Sweep</div><div>Count 300/300</div><div>Frequency Sweep</div><div>1.84 dBm</div><div>2.401726 GHz</div><div>-44.23 dBm</div><div>2.400000 GHz</div><div>18.100 dBm</div><div>2.31 GHz</div><div>1001 pts</div><div>9.5 MHz/</div><div>2.405 GHz</div><div>2 Marker Table</div><table><thead><tr><th>Type</th><th>Ref</th><th>Trc</th><th>X-Value</th><th>Y-Value</th><th>Function</th><th>Function Result</th></tr></thead><tbody><tr><td>M1</td><td>1</td><td></td><td>2.401726 GHz</td><td>1.84 dBm</td><td></td><td></td></tr><tr><td>M2</td><td>1</td><td></td><td>2.4 GHz</td><td>-44.23 dBm</td><td></td><td></td></tr><tr><td>M3</td><td>1</td><td></td><td>2.39 GHz</td><td>-56.91 dBm</td><td></td><td></td></tr><tr><td>M4</td><td>1</td><td></td><td>2.31 GHz</td><td>-74.35 dBm</td><td></td><td></td></tr><tr><td>M5</td><td>1</td><td></td><td>2.399965 GHz</td><td>-43.90 dBm</td><td></td><td></td></tr></tbody></table><div>Date: 11/01/2022 16:09:10</div></div></div></div></div>			Type	Ref	Trc	X-Value	Y-Value	Function	Function Result	M1	1		2.401726 GHz	1.84 dBm			M2	1		2.4 GHz	-44.23 dBm			M3	1		2.39 GHz	-56.91 dBm			M4	1		2.31 GHz	-74.35 dBm			M5	1		2.399965 GHz	-43.90 dBm		
Type	Ref	Trc	X-Value	Y-Value	Function	Function Result																																							
M1	1		2.401726 GHz	1.84 dBm																																									
M2	1		2.4 GHz	-44.23 dBm																																									
M3	1		2.39 GHz	-56.91 dBm																																									
M4	1		2.31 GHz	-74.35 dBm																																									
M5	1		2.399965 GHz	-43.90 dBm																																									
CH39	<div><div><div><div><div>MultiView</div><div>Spectrum</div><div>Ref Level 10.50 dBm Offset 1.00 dB RBW 100 kHz</div><div>Att 20 dB SW 1.02 ms VBW 300 kHz Mode Auto Sweep</div><div>Count 100/100</div><div>Frequency Sweep</div><div>2.50 dBm</div><div>2.4797470 GHz</div><div>-47.94 dBm</div><div>2.4835000 GHz</div><div>17.500 dBm</div><div>2.478 GHz</div><div>1001 pts</div><div>2.2 MHz/</div><div>2.5 GHz</div><div>2 Marker Table</div><table><thead><tr><th>Type</th><th>Ref</th><th>Trc</th><th>X-Value</th><th>Y-Value</th><th>Function</th><th>Function Result</th></tr></thead><tbody><tr><td>M1</td><td>1</td><td></td><td>2.479747 GHz</td><td>2.50 dBm</td><td></td><td></td></tr><tr><td>M2</td><td>1</td><td></td><td>2.4835 GHz</td><td>-47.94 dBm</td><td></td><td></td></tr><tr><td>M3</td><td>1</td><td></td><td>2.5 GHz</td><td>-54.75 dBm</td><td></td><td></td></tr><tr><td>M4</td><td>1</td><td></td><td>2.483588 GHz</td><td>-47.18 dBm</td><td></td><td></td></tr></tbody></table><div>Date: 11/01/2022 16:17:11</div></div></div></div></div>			Type	Ref	Trc	X-Value	Y-Value	Function	Function Result	M1	1		2.479747 GHz	2.50 dBm			M2	1		2.4835 GHz	-47.94 dBm			M3	1		2.5 GHz	-54.75 dBm			M4	1		2.483588 GHz	-47.18 dBm									
Type	Ref	Trc	X-Value	Y-Value	Function	Function Result																																							
M1	1		2.479747 GHz	2.50 dBm																																									
M2	1		2.4835 GHz	-47.94 dBm																																									
M3	1		2.5 GHz	-54.75 dBm																																									
M4	1		2.483588 GHz	-47.18 dBm																																									

Test Item:	SE	Test Rate:	1Mbps
CH00 Reference level	 <p>Ref Level 30.00 dBm Offset 1.00 dB RBW 100 kHz Att 30 dB SWI 1.04 ms VBW 300 kHz Mode Auto Sweep Count 100/100 M1[1] 1.66 dBm 2.4017600 GHz 2.402 GHz 1001 pts 3.0 MHz/ Span 30.0 MHz Date:11.OCT.2022 16:09:16</p>		
CH00 30MHz~1000MHz	 <p>Ref Level 20.00 dBm Offset 1.00 dB RBW 100 kHz Att 30 dB SWI 30.1 ms VBW 300 kHz Mode Auto Sweep Count 10/10 M1[1] -60.67 dBm 609.6670 MHz -18.130 dBm 30.0 MHz 30001 pts 97.0 MHz/ 1.0 GHz Date:11.OCT.2022 16:09:02</p>		
CH00 1GHz~26GHz	 <p>Ref Level 20.00 dBm Offset 1.00 dB RBW 100 kHz Att 30 dB SWI 250 ms VBW 300 kHz Mode Auto Sweep Count 10/10 M1[1] -43.22 dBm 7.200000 GHz -18.130 dBm 1.0 GHz 30001 pts 2.5 GHz/ 26.0 GHz Date:11.OCT.2022 16:09:48</p>		

CH19 Reference level	 <p>Ref Level 30.00 dBm Offset 1.00 dB RBW 100 kHz Att 30 dB SWF 1.04 ms VBW 300 kHz Mode Auto Sweep Count 100/100 M1[1] 2.32 dBm 2.4397600 GHz 20 dBm 10 dBm 0 dBm -10 dBm -20 dBm -30 dBm -40 dBm -50 dBm -60 dBm -70 dBm -80 dBm CF 2.44 GHz 1001 pts 3.0 MHz/ Span 30.0 MHz Date:11.OCT.2022 16d1d4</p>
CH19 30MHz~1000MHz	 <p>Ref Level 20.00 dBm Offset 1.00 dB RBW 100 kHz Att 30 dB SWF 30.1 ms VBW 300 kHz Mode Auto Sweep Count 10/10 M1[1] -60.83 dBm 486.5800 MHz -10 dBm -20 dBm -30 dBm -40 dBm -50 dBm -60 dBm -70 dBm -80 dBm 30.0 MHz 30001 pts 97.0 MHz/ 1.0 GHz Date:11.OCT.2022 16d1d5</p>
CH19 1GHz~26GHz	 <p>Ref Level 20.00 dBm Offset 1.00 dB RBW 100 kHz Att 30 dB SWF 250 ms VBW 300 kHz Mode Auto Sweep Count 10/10 M1[1] -47.56 dBm 7.313333 GHz -10 dBm -20 dBm -30 dBm -40 dBm -50 dBm -60 dBm -70 dBm -80 dBm 1.0 GHz 30001 pts 2.5 GHz/ 26.0 GHz Date:11.OCT.2022 16d2d6</p>

CH39 Reference level	 <p>Ref Level 30.00 dBm Offset 1.00 dB RBW 100 kHz Att 30 dB SWF 1.04 ms VBW 300 kHz Mode Auto Sweep Count 100/100 MI[1] 2.73 dBm 2.4797600 GHz CF 2.48 GHz 1001 pts 3.0 MHz/ Span 30.0 MHz Date:11.OCT.2022 16d7d7</p>
CH39 30MHz~1000MHz	 <p>Ref Level 20.00 dBm Offset 1.00 dB RBW 100 kHz Att 30 dB SWF 30.1 ms VBW 300 kHz Mode Auto Sweep Count 10/10 MI[1] -61.23 dBm 496.9590 MHz MI -17.270 dBm 30.0 MHz 30001 pts 97.0 MHz/ 1.0 GHz Date:11.OCT.2022 16d7d3</p>
CH39 1GHz~26GHz	 <p>Ref Level 20.00 dBm Offset 1.00 dB RBW 100 kHz Att 30 dB SWF 250 ms VBW 300 kHz Mode Auto Sweep Count 10/10 MI[1] -48.48 dBm 7.434167 GHz MI -17.270 dBm 1.0 GHz 30001 pts 2.5 GHz/ 26.0 GHz Date:11.OCT.2022 16d7d9</p>

-----End of Report-----