
FCC Part 90 Test Report

Report No.: AGC21Q120501F2

FCC ID : OA8CD-528

PRODUCT DESIGNATION : two way radio

BRAND NAME : chierda, LUITON

MODEL NAME : CD-528, LT-5280

CLIENT : Quanzhou Chierda Electronic Telecom Co.,Ltd.

DATE OF ISSUE : June 07, 2012

STANDARD(S) : FCC Part 90 Rules

REPORT VERSION : V1.0

Attestation of **Global Compliance Co., Ltd.**

CAUTION: This report shall not be reproduced except in full without the written permission of the test laboratory and shall not be quoted out of context.

VERIFICATION OF COMPLIANCE

Applicant:	Quanzhou Chierda Electronic Telecom Co.,Ltd.
	NO.8, Zi,an Road, Jiangnan High-Tech Industrial Zo Licheng district, Quanzhou
Manufacturer:	Quanzhou Chierda Electronic Telecom Co.,Ltd.
	NO.8, Zi,an Road, Jiangnan High-Tech Industrial Zo Licheng district, Quanzhou
Product Description:	two way radio
Brand Name:	chierda, LUITON
Test Model:	CD-258
Series Model:	LT-5280
Difference description:	All above models are the same except for model name and brand name. CD-258 use chierda for brand name and LT-5280 use LUITON for brand name.
File Number:	AGC21Q120501F2
Date of Test:	June 02 to June 06, 2012

We hereby certify that:

The above equipment was tested by Attestation of Global Compliance Co., Ltd. The data evaluation, test procedures, and equipment configurations shown in this report were made in accordance with the procedures given in ANSI C 63.4:2003 and TIA/EIA 603. The sample tested as described in this report is in compliance with the FCC Rules Part 90 requirements.

The test results of this report relate only to the tested sample identified in this report.

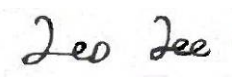

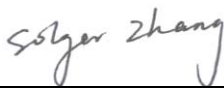
Tested By:	
	Leo Lee June 07, 2012
Review By	
	Forrest Lei June 07, 2012
Approved By	
	Solger zhang June 07, 2012

TABLE OF CONTENTS

1. GENERAL INFORMATION.....	4
1.1 PRODUCT DESCRIPTION	4
1.2 RELATED SUBMITTAL(S) / GRANT (S)	5
1.3 TEST METHODOLOGY	5
1.4 TEST FACILITY.....	5
1.5 SPECIAL ACCESSORIES	5
1.6 EQUIPMENT MODIFICATIONS	5
2. SYSTEM TEST CONFIGURATION	6
2.1 EUT CONFIGURATION	6
2.2 EUT EXERCISE	6
2.3 GENERAL TECHNICAL REQUIREMENTS.....	6
2.4 CONFIGURATION OF TESTED SYSTEM.....	6
3. SUMMARY OF TEST RESULTS	7
4. DESCRIPTION OF TEST MODES.....	8
5. CONDUCTED LIMITS.....	9
5.1 PROVISIONS APPLICABLE.....	9
5.2 MEASUREMENT PROCEDURE.....	9
5.3 TEST SETUP BLOCK DIAGRAM	10
5.4 TEST EQUIPMENT USED	10
5.5 TEST RESULT.....	11
6. FREQUENCY TOLERANCE.....	13
6.1 PROVISIONS APPLICABLE.....	13
6.2 MEASUREMENT PROCEDURE.....	13
6.3 TEST SETUP BLOCK DIAGRAM	14
6.4 TEST EQUIPMENT USED	14
6.5 TEST RESULT	14
7. EMISSION BANDWIDTH.....	18
7.1 PROVISIONS APPLICABLE	18
7.2 MEASUREMENT PROCEDURE.....	18
7.3 TEST SETUP BLOCK DIAGRAM	18
7.4 MEASUREMENT EQUIPMENT USED	18
7.5 MEASUREMENT RESULT	19
8. UNWANTED RADIATION	20
8.1 PROVISIONS APPLICABLE.....	20
8.2 MEASUREMENT PROCEDURE.....	20
8.3 TEST SETUP BLOCK DIAGRAM.....	21
8.4 MEASUREMENT EQUIPMENT USED:	23
8.5 MEASUREMENT RESULTS	23

8.6 EMISSION MASK PLOT	25
9. MODULATION CHARACTERISTICS	26
9.1 PROVISIONS APPLICABLE.....	26
9.2 MEASUREMENT METHOD	26
9.3 MEASUREMENT INSTRUMENTS.....	26
9.4 MEASUREMENT RESULT.....	27
10. MAXIMUM TRANSMITTER POWER (CONDUCTED OUTPUT POWER) AND CONDUCTED SPURIOUS EMISSION	30
10.1 PROVISIONS APPLICABLE.....	30
10.2 TEST PROCEDURE.....	30
10.3 TEST INSTRUMENTS.....	30
10.4 TEST CONFIGURATION.....	30
10.5 TEST RESULT	31
10.6 CONDUCT SPURIOUS PLOT.....	32
11. TRANSMITTER FREQUENCY BEHAVIOR.....	33
11.1 PROVISIONS APPLICABLE.....	33
11.2 TEST METHOD	33
11.3 TEST INSTRUMENTS.....	33
11.4 DESCRIBE LIMIT LINE OF TRANSMITTER FREQUENCY BEHAVIOR	34
11.5 MEASURE RESULT	36
12. RADIATED EMISSION ON RECEIVING MODE.....	37
12.1 PROVISIONS APPLICABLE.....	37
12.2 TEST METHOD	37
12.3 TEST INSTRUMENTS.....	37
12.4 MEASURE RESULT (MEASURED AT 3M USING FCC PART15 B LIMITS)	38
13. AUDIO LOW PASS FILTER RESPONSE	40
13.1 LIMITS.....	40
13.2 METHOD OF MEASUREMENTS.....	40
13.3 TEST DATA	40
APPENDIX I.....	43
PHOTOGRAPHS OF SETUP	43
APPENDIX II.....	45
EXTERNAL VIEW OF EUT.....	45

1. GENERAL INFORMATION

1.1 PRODUCT DESCRIPTION

The EUT is a single channel two way radio designed for voice communication. It is designed by way of utilizing the FM modulation achieves the system operating.

A major technical description of EUT is described as following:

Communication Type	Voice / Tone only
Modulation	FM
Emission Type	F3E
Channel Separation:	12.5KHz
Emission Bandwidth	6.867kHz
Peak Frequency Deviation	1.79KHz
Audio Frequency Response	2.5 KHz
Maximum Transmitter Power	36.45dBm
Antenna Designation	Detachable
Power Supply	DC 7.4V by battery
Battery Endpoint	DC 6.3V
Operation Frequency Range and Channel	Frequency Range: 400MHz to 470MHz Channel Separation: 12.5KHz
	400MHz to 470MHz Bottom Channel: 400.025MHz, Centre Channel: 435.025MHz, Top Channel: 469.975MHz,
Frequency Tolerance	1.277ppm

1.2 RELATED SUBMITTAL(S) / GRANT (S)

This submittal(s) (test report) is intended for **FCC ID: OA8CD-528**, filing to comply with the FCC Part 90 requirements.

1.3 TEST METHODOLOGY

The radiated emission testing was performed according to the procedures of ANSI C 63.4: 2009; TIA/EIA 603 and FCC CFR 47 Rules of 2.1046, 2.1047, 2.1049, 2.1051, 2.1053, 2.1055, 2.1057.

1.4 TEST FACILITY

The test site used to collect the radiated data is located on the address of Attestation of Global Compliance Co., Ltd. 2F., No.2 Building, Huafeng No.1 Technical Industrial Park, Sanwei, Xixiang, Baoan District, Shenzhen. The test site is constructed and calibrated to meet the FCC requirements in documents ANSI C63.4: 2003 .
FCC register No.: 259865

1.5 SPECIAL ACCESSORIES

Not available for this EUT intended for grant.

1.6 EQUIPMENT MODIFICATIONS

Not available for this EUT intended for grant.

2. SYSTEM TEST CONFIGURATION

2.1 EUT CONFIGURATION

The EUT configuration for testing is installed on RF field strength measurement to meet the Commission's requirement and operating in a manner which intends to maximize its emission characteristics in a continuous normal application.

2.2 EUT EXERCISE

The Transmitter was operated in the normal operating mode. The TX frequency was fixed which was for the purpose of the measurements.

2.3 GENERAL TECHNICAL REQUIREMENTS

- (1). Section 15.207: Conducted Limits
- (2). Section 90.205: Maximum ERP is dependent upon the station's antenna HAAT and required service area
- (3). Section 90.207: Modulation Characteristic
- (4). Section 90.209: Occupied Bandwidth
- (5). Section 90.210: Emission Mask
- (6). Section 90.213: Frequency Tolerance
- (7). Section 90.214: Transient Frequency Behavior
- (8). Section 15.109: Radiated Emission

2.4 CONFIGURATION OF TESTED SYSTEM

Fig. 2-1 Configuration of Tested System



Table 2-1 Equipment Used in Tested System

Item	Equipment	Model No.	Identifier	Note
1	two way radio	CD-528	FCC ID: OA8CD-528	EUT
2	Charger	CD-528	N/A	Accessory
3	Battery	CD-528	N/A	Accessory

3. SUMMARY OF TEST RESULTS

FCC Rules	Description Of Test	Result
§15.107	Conducted Emission	Compliant
§90.205	Maximum Transmitter Power	Compliant
§90.207	Modulation Characteristic	Compliant
§90.209	Occupied Bandwidth	Compliant
§90.210	Emission Mask	Compliant
§90.213	Frequency Tolerance	Compliant
§90.214	Transient Frequency Behavior	Compliant
§15.109	Radiated Emission	Compliant

4. DESCRIPTION OF TEST MODES

The EUT (two way radio) has been tested under normal operating condition. (The top channel, the middle channel and the bottom channel) are chosen for testing at each channel separation (12.5 KHz).

5. CONDUCTED LIMITS

5.1 PROVISIONS APPLICABLE

For an intentional radiator that is designed to be connected to the public utility (AC) power line, the, the radio frequency voltage that is conducted back onto the AC power line on any frequencies within the band 150 KHz to 30 MHz shall not exceed the limits in the following table, as measured using a 50uH/50 ohms line impedance stabilization network (LISN). Compliance with the provisions of this paragraph shall be based on the measurement of the radio frequency voltage between each power line and ground at the power terminal. The lower limit applies at the boundary between the frequencies ranges.

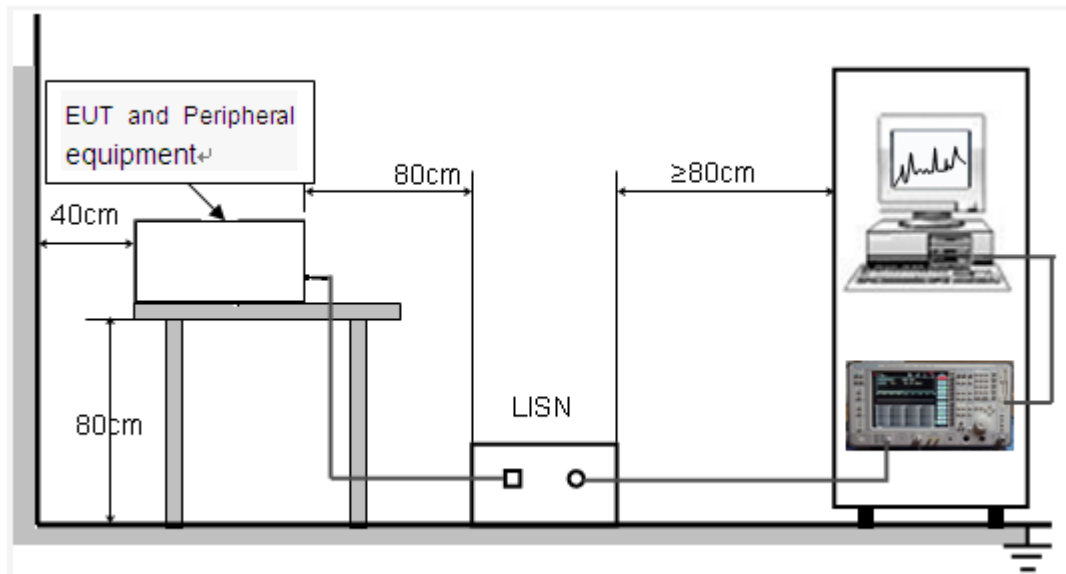
Frequency of Emission (MHz)	Conducted Limit(dBuV)	
	Quasi-Peak	Average
0.15 – 0.5	66 to 56 *	56 to 46 *
0.5 – 5	56	46
5 – 30	60	50

* Decreases with the logarithm of the frequency.

5.2 MEASUREMENT PROCEDURE

- (1) The equipment was set up as per the test configuration to simulate typical actual usage per the user's manual. When the EUT is a tabletop system, a wooden table with a height of 0.8 meters is used and is placed on the ground plane as per ANSI C63.4 (see Test Facility for the dimensions of the ground plane used). When the EUT is a floor-standing equipment, it is placed on the ground plane which has a 3-12 mm non-conductive covering to insulate the EUT from the ground plane.
- (2) Support equipment, if needed, was placed as per ANSI C63.4.
- (3) All I/O cables were positioned to simulate typical actual usage as per ANSI C63.4.
- (4) The EUT received AC120V/60Hz power through a Line Impedance Stabilization Network (LISN) which supplied power source and was grounded to the ground plane.
- (5) All support equipments received AC power from a second LISN, if any.
- (6) The EUT test program was started. Emissions were measured on each current carrying line of the EUT using a spectrum Analyzer / Receiver connected to the LISN powering the EUT. The LISN has two monitoring points: Line 1 (Hot Side) and Line 2 (Neutral Side). Two scans were taken: one with Line 1 connected to Analyzer / Receiver and Line 2 connected to a 50 ohm load; the second scan had Line 1 connected to a 50 ohm load and Line 2 connected to the Analyzer / Receiver.
- (7) Analyzer / Receiver scanned from 150kHz to 30MHz for emissions in each of the test modes.
During the above scans, the emissions were maximized by cable manipulation.

5.3 TEST SETUP BLOCK DIAGRAM

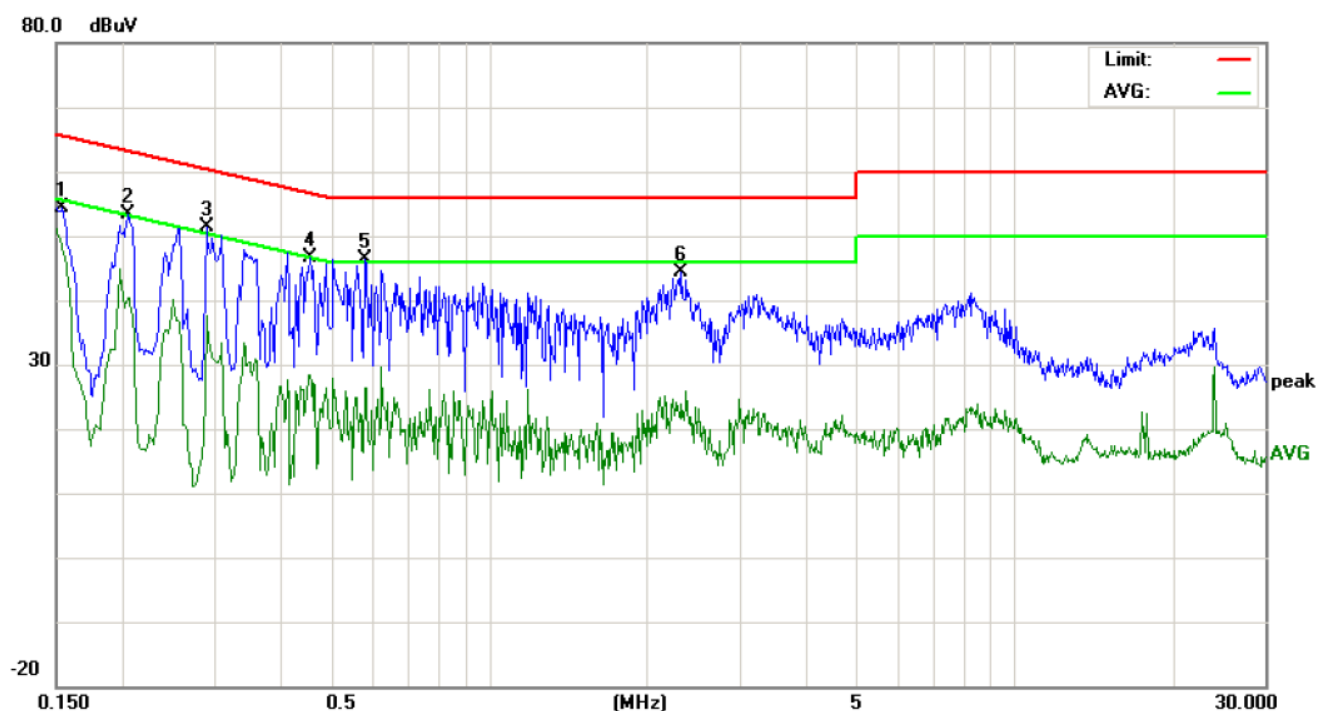


5.4 TEST EQUIPMENT USED

Conducted Emission Test Site				
Name of Equipment	Manufacturer	Model	Serial Number	Cal. Date
TEST RECEIVER	R&S	ESCI	N/A	2011.6.27
LISN	R&S	ESH3-Z5	N/A	2011.6.27

5.5 TEST RESULT

LINE CONDUCTED EMISSION TEST-L



Site: Conduction

Phase: **L1**

Temperature: 26

Limit: FCC Class B Conduction(QP)

Power: AC 120V/60Hz

Humidity: 60 %

EUT: two way radio

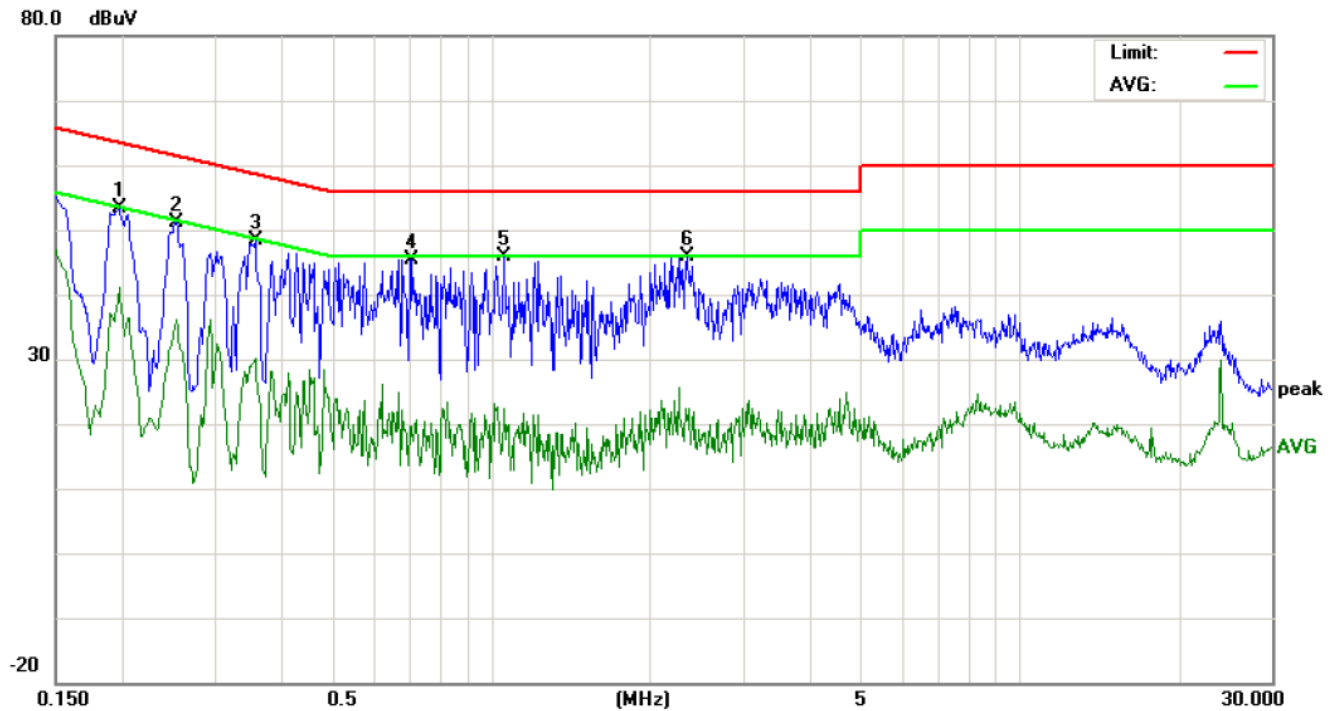
M/N: CD-528

Mode: Charging

Note:

No.	Freq. (MHz)	Reading_Level (dBuV)			Correct Factor dB	Measurement (dBuV)			Limit (dBuV)		Margin (dB)		P/F	Comment
		Peak	QP	AVG		Peak	QP	AVG	QP	AVG	QP	AVG		
1	0.1539	44.26		38.14	10.16	54.42		48.30	65.78	55.78	-11.36	-7.48	P	
2	0.2060	43.12		30.15	10.22	53.34		40.37	63.36	53.36	-10.02	-12.99	P	
3	0.2900	41.02		27.32	10.29	51.31		37.61	60.52	50.52	-9.21	-12.91	P	
4	0.4580	36.29		17.91	10.37	46.66		28.28	56.73	46.73	-10.07	-18.45	P	
5	0.5820	36.13		16.12	10.33	46.46		26.45	56.00	46.00	-9.54	-19.55	P	
6	2.3300	33.90		13.59	10.36	44.26		23.95	56.00	46.00	-11.74	-22.05	P	

LINE CONDUCTED EMISSION TEST-N



Site: Conduction
Limit: FCC Class B Conduction(QP)
EUT: two way radio
M/N: CD-528
Mode: Charging
Note:

Phase: **N**
Power: AC 120V/60Hz

Temperature: 26
Humidity: 60 %

No.	Freq. (MHz)	Reading_Level (dBuV)			Correct Factor dB	Measurement (dBuV)			Limit (dBuV)		Margin (dB)		P/F	Comment
		Peak	QP	AVG		Peak	QP	AVG	QP	AVG	QP	AVG		
1	0.1980	43.10		30.87	10.21	53.31		41.08	63.69	53.69	-10.38	-12.61	P	
2	0.2540	40.93		25.74	10.27	51.20		36.01	61.62	51.62	-10.42	-15.61	P	
3	0.3580	38.10		19.91	10.31	48.41		30.22	58.77	48.77	-10.36	-18.55	P	
4	0.7100	35.10		8.60	10.34	45.44		18.94	56.00	46.00	-10.56	-27.06	P	
5	1.0620	35.41		11.92	10.37	45.78		22.29	56.00	46.00	-10.22	-23.71	P	
6	2.3540	35.49		10.23	10.37	45.86		20.60	56.00	46.00	-10.14	-25.40	P	

6. FREQUENCY TOLERANCE

6.1 PROVISIONS APPLICABLE

- a). According to FCC Part 2 Section 2.1055(a)(1), the frequency stability shall be measured with variation of ambient temperature from -30°C to $+50^{\circ}\text{C}$ centigrade.
- b). According to FCC Part 2 Section 2.1055(d)(2), for battery powered equipment, the frequency stability shall be measured with reducing primary supply voltage to the battery operating end point, which is specified by the manufacturer.
- c). According to FCC Part 90 Section 90.213, the frequency tolerance must be maintained within 2.5 ppm in the 421–512 MHz band.

6.2 MEASUREMENT PROCEDURE

6.2.1 Frequency stability versus environmental temperature

1. Setup the configuration per figure 1 for frequencies measurement inside an environment chamber, Install new battery in the EUT.
2. Turn on EUT and set SA center frequency to the EUT radiated frequency. Set SA Resolution Bandwidth to 1KHz and Video Resolution Bandwidth to 1KHz and Frequency Span to 50KHz. Record this frequency as reference frequency.
3. Set the temperature of chamber to 50°C . Allow sufficient time (approximately 30 min) for the temperature of the chamber to stabilize. While maintaining a constant temperature inside the chamber, turn the EUT on and measure the EUT operating frequency.
4. Repeat step 2 with a 10°C decreased per stage until the lowest temperature -30°C is measured, record all measured frequencies on each temperature step.

6.2.2 Frequency stability versus input voltage

1. Setup the configuration per figure 1 for frequencies measured at temperature if it is within 15°C to 25°C . Otherwise, an environment chamber set for a temperature of 20°C shall be used. The EUT shall be powered by DC 7.4V
2. Set SA center frequency to the EUT radiated frequency. Set SA Resolution Bandwidth to 1 KHz and Video Resolution Bandwidth to 1KHz. Record this frequency as reference frequency.
3. Supply the EUT primary voltage at the operating end point which is specified by manufacturer and record the frequency.

6.3 TEST SETUP BLOCK DIAGRAM

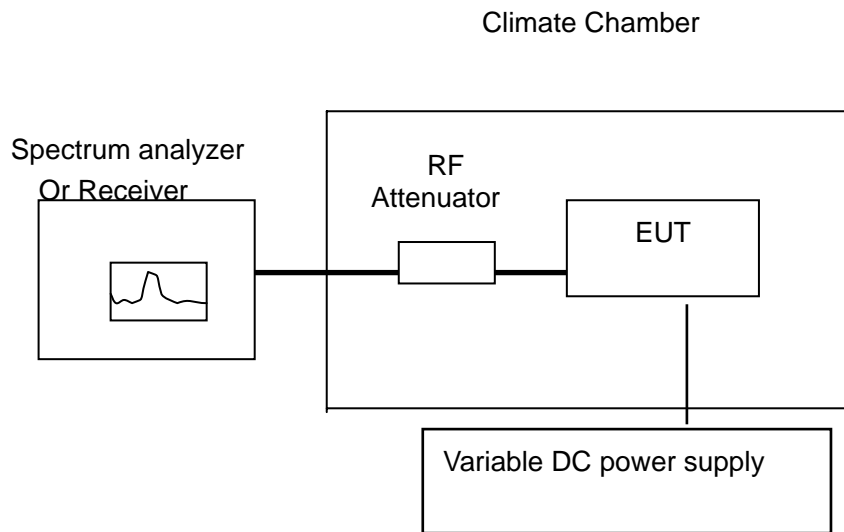


Figure 1

6.4 TEST EQUIPMENT USED

NAME OF EQUIPMENT	MANUFACTURER	MODEL	SERIAL NUMBER	CAL. DATE
Receiver	R&S	ESCI	N/A	2011.6.27
Climate Chamber	Albatross	--	--	2011.6.27

6.5 TEST RESULT

(1) Frequency stability versus input voltage (Supply nominal voltage is 7.4V)

Bottom Channel @ 12.5 KHz Channel Separation

Reference Frequency:	400.025 MHz	Limit:	2.5ppm
Environment Temperature	Power Supply	Frequency Deviation	
(°C)	(V)	(MHz)	ppm
50	7.4	400.025487	1.217
40	7.4	400.025366	0.915
30	7.4	400.025317	0.792
20	7.4	400.025246	0.615
10	7.4	400.025225	0.562
0	7.4	400.025251	0.627
-10	7.4	400.025284	0.710
-20	7.4	400.025331	0.827
-30	7.4	400.025469	1.172

Middle Channel @ 12.5 KHz Channel Separation

Reference Frequency:	435.025 MHz	Limit:	2.5ppm
Environment Temperature	Power Supply	Frequency Deviation	
(°C)	(V)	(MHz)	ppm
50	7.4	435.025478	1.099
40	7.4	435.025434	0.998
30	7.4	435.025419	0.963
20	7.4	435.025357	0.821
10	7.4	435.025329	0.756
0	7.4	435.025337	0.775
-10	7.4	435.025328	0.754
-20	7.4	435.025359	0.825
-30	7.4	435.025374	0.860

Top Channel @ 12.5KHz Channel Separation

Reference Frequency:	469.975 MHz	Limit:	2.5ppm
Environment Temperature	Power Supply	Frequency Deviation	
(°C)	(V)	(MHz)	ppm
50	7.4	469.975524	1.115
40	7.4	469.975443	0.943
30	7.4	469.975419	0.892
20	7.4	469.975333	0.709
10	7.4	469.975245	0.521
0	7.4	469.975244	0.519
-10	7.4	469.975328	0.698
-20	7.4	469.975349	0.743
-30	7.4	469.975367	0.781

(2) Frequency stability versus input voltage (Battery End Point voltage is 6.3V)

Bottom Channel @ 12.5 KHz Channel Separation

Reference Frequency:	400.025 MHz	Limit:	2.5ppm
Environment Temperature	Power Supply	Frequency Deviation	
(°C)	(V)	(MHz)	ppm
50	6.3	400.025511	1.277
40	6.3	400.025477	1.192
30	6.3	400.025461	1.152
20	6.3	400.025434	1.085
10	6.3	400.025331	0.827
0	6.3	400.025324	0.810
-10	6.3	400.025436	1.090
-20	6.3	400.025467	1.167
-30	6.3	400.025479	1.197

Middle Channel @ 12.5 KHz Channel Separation

Reference Frequency:	435.025 MHz	Limit:	2.5ppm
Environment Temperature	Power Supply	Frequency Deviation	
(°C)	(V)	(MHz)	ppm
50	6.3	435.025483	1.110
40	6.3	435.025454	1.044
30	6.3	435.025425	0.977
20	6.3	435.025381	0.876
10	6.3	435.025341	0.784
0	6.3	435.025317	0.729
-10	6.3	435.025361	0.830
-20	6.3	435.025381	0.876
-30	6.3	435.025419	0.963

Top Channel @ 12.5KHz Channel Separation

Reference Frequency:	469.975 MHz	Limit:	2.5ppm
Environment Temperature	Power Supply	Frequency Deviation	
(°C)	(V)	(MHz)	ppm
50	6.3	469.975486	1.034
40	6.3	469.975444	0.945
30	6.3	469.975417	0.887
20	6.3	469.975386	0.821
10	6.3	469.975381	0.811
0	6.3	469.975379	0.806
-10	6.3	469.975424	0.902
-20	6.3	469.975434	0.923
-30	6.3	469.975449	0.955

(3) Frequency stability versus input voltage (Battery Fully Charged voltage is 8.51V)

Bottom Channel @ 12.5 KHz Channel Separation

Reference Frequency:	400.025 MHz	Limit:	2.5ppm
Environment Temperature	Power Supply	Frequency Deviation	
(°C)	(V)	(MHz)	ppm
50	8.51	400.025489	1.222
40	8.51	400.025473	1.182
30	8.51	400.025462	1.155
20	8.51	400.025439	1.097
10	8.51	400.025334	0.835
0	8.51	400.025341	0.852
-10	8.51	400.025437	1.092
-20	8.51	400.025444	1.110
-30	8.51	400.025473	1.182

Middle Channel @ 12.5 KHz Channel Separation

Reference Frequency:	435.025MHz	Limit:	2.5ppm
Environment Temperature	Power Supply	Frequency Deviation	
(°C)	(V)	(MHz)	ppm
50	8.51	435.025475	1.092
40	8.51	435.025444	1.021
30	8.51	435.025423	0.972
20	8.51	435.025377	0.867
10	8.51	435.025341	0.784
0	8.51	435.025326	0.749
-10	8.51	435.025354	0.814
-20	8.51	435.025363	0.834
-30	8.51	435.025467	1.074

Top Channel @ 12.5KHz Channel Separation

Reference Frequency:	469.975 MHz	Limit:	2.5ppm
Environment Temperature	Power Supply	Frequency Deviation	
(°C)	(V)	(MHz)	ppm
50	8.51	469.975491	1.045
40	8.51	469.97544	0.936
30	8.51	469.975424	0.902
20	8.51	469.975397	0.845
10	8.51	469.975394	0.838
0	8.51	469.975383	0.815
-10	8.51	469.975421	0.896
-20	8.51	469.975439	0.934
-30	8.51	469.975447	0.951

7. EMISSION BANDWIDTH

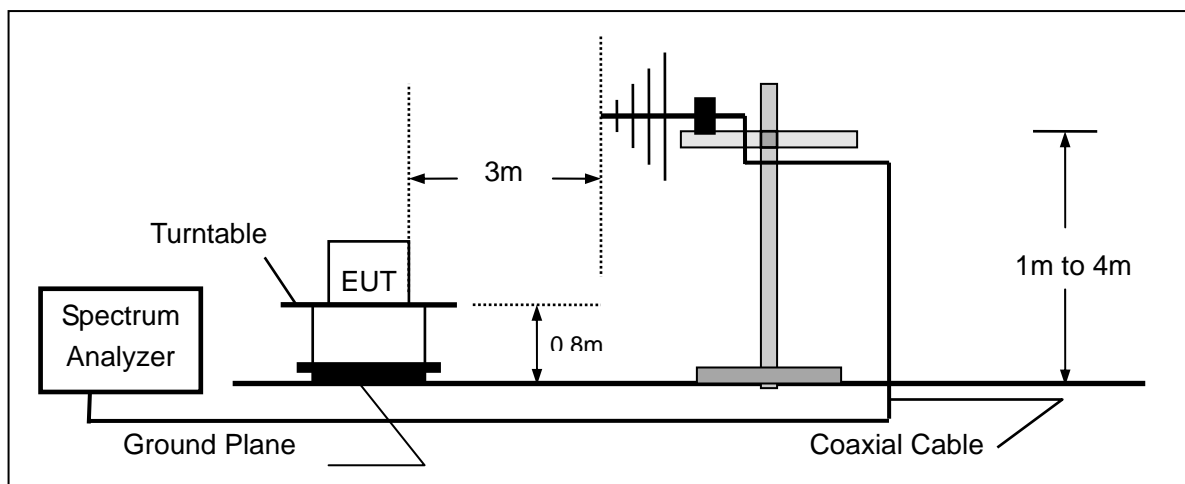
7.1 PROVISIONS APPLICABLE

According to FCC Part 90 Section 90.209: The authorized bandwidth shall be 11.25 KHz for 12.5 KHz.

7.2 MEASUREMENT PROCEDURE

- 1). The EUT was placed on a turn table which is 0.8m above ground plane.
- 2). The EUT was modulated by sine wave audio signal of maximum audio frequency response. The level of the audio signal employed is 16 dB greater than that necessary to produce 50% of rated system deviation. Rated system deviation is 2.5 kHz (12.5 kHz channel spacing) .
- 3). Set SPA Center Frequency = fundamental frequency, RBW=VBW= 300 Hz, Span =50 KHz.
- 4). Set SPA Max hold. Mark peak, -26 dB.

7.3 TEST SETUP BLOCK DIAGRAM



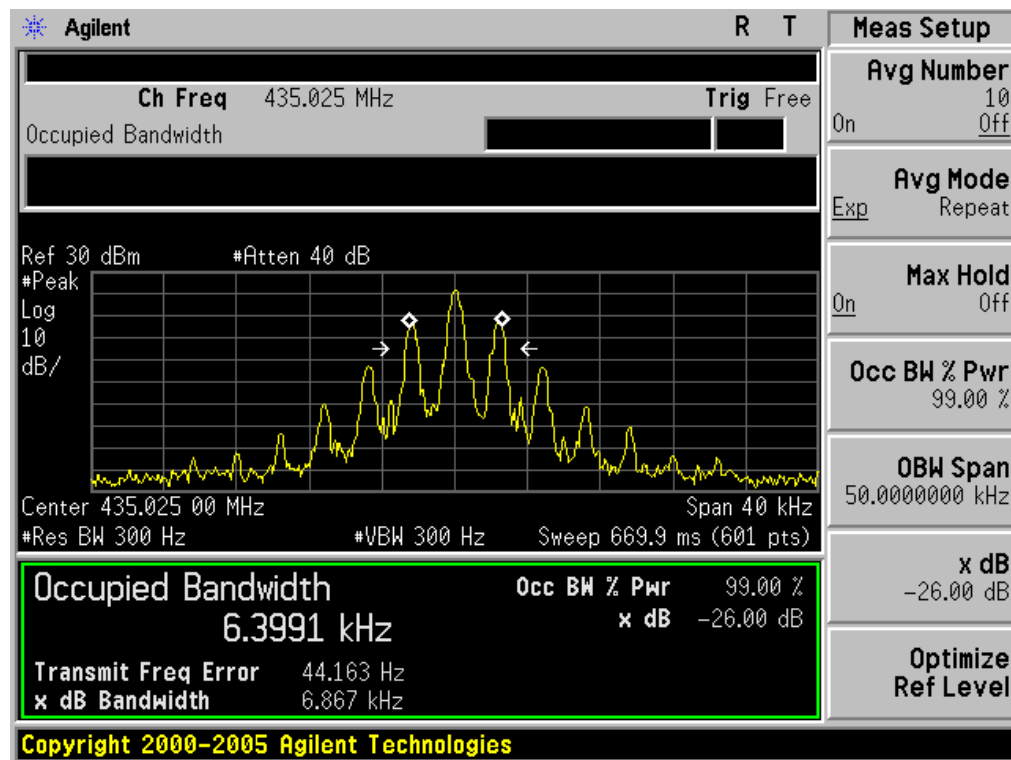
7.4 MEASUREMENT EQUIPMENT USED

NAME OF EQUIPMENT	MANUFACTURER	MODEL	SERIAL NUMBER	CAL. DATE
SPECTRUM ANALYZER	AGILENT	E4440A	US44300399	2011.6.27
MODULATION ANALYZER	HP	8901B	3104A03367	2011.6.27
BROADBAND ANT.	R&S	HL562	A0304224	2011.6.27

7.5 MEASUREMENT RESULT

26 dB Bandwidth Measurement Result			
Operating Frequency	12.5 KHz Channel Separation		
	Test Data	Limits	Result
400.025MHz	6.857KHz	11.25 KHz	Pass
435.025MHz	6.867KHz	11.25 KHz	Pass
469.975MHz	6.861KHz	11.25 KHz	Pass

Occupied bandwidth of Middle Channel (Maximum)



8. UNWANTED RADIATION

8.1 PROVISIONS APPLICABLE

8.1.1 According to Section 90.210, the power of each unwanted emission shall be less than Transmitted Power as specified below for transmitters designed to operate with 12.5 KHz channel bandwidth:

- (1). On any frequency removed from the center of the authorized bandwidth f_0 to 5.625 KHz removed from f_0 : Zero dB
- (2). On any frequency removed from the center of the authorized bandwidth by a displacement frequency $(f_d \text{ in KHz})/f_0$ of more than 5.625 KHz but no more than 12.5 KHz: At least $7.27(f_d - 2.88 \text{ KHz}) \text{ dB}$
- (3). On any frequency removed from the center of the authorized bandwidth by a displacement Frequency $(f_d \text{ in KHz})/f_0$ of more than 12.5 KHz: At least $50 + 10 \log(P) \text{ dB}$ or 70 dB, whichever is lesser attenuation.

8.2 MEASUREMENT PROCEDURE

- (1) On a test site, the EUT shall be placed on a turn table, and in the position closest to the normal use as declared by the user.
- (2) The test antenna shall be oriented initially for vertical polarization located 3m from the EUT to correspond to the transmitter.
- (3) The output of the antenna shall be connected to the measuring receiver and either a peak or quasi-peak detector was used for the measurement as indicated on the report. The detector selection is based on how close the emission level was approaching the limit.
- (4) The transmitter shall be switched on; if possible, without the modulation and the measurement receiver shall be tuned to the frequency of the transmitter under test.
- (5) The test antenna shall be raised and lowered through the specified range of height until the measuring receiver detects a maximum signal level.
- (6) The transmitter shall then be rotated through 360° in the horizontal plane, until the maximum signal level is detected by the measuring receiver.
- (7) The test antenna shall be raised and lowered again through the specified range of height until the measuring receiver detects a maximum signal level.
- (8) The maximum signal level detected by the measuring receiver shall be noted.
- (9) The measurement shall be repeated with the test antenna set to horizontal polarization.
- (10) Replace the antenna with a proper Antenna (substitution antenna).
- (11) The substitution antenna shall be oriented for vertical polarization and, if necessary, the length of the substitution antenna shall be adjusted to correspond to the frequency of transmitting.
- (12) The substitution antenna shall be connected to a calibrated signal generator.
- (13) If necessary, the input attenuator setting of the measuring receiver shall be adjusted in order to increase the sensitivity of the measuring receiver.

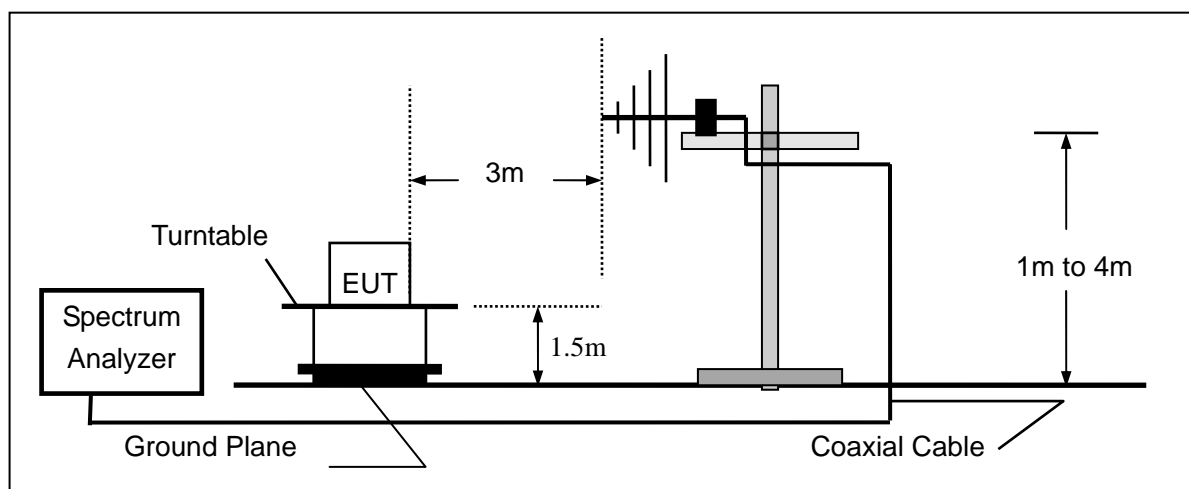
(14) The test antenna shall be raised and lowered through the specified range of the height to ensure that the maximum signal is received.

(15) The input signal to substitution antenna shall be adjusted to the level that produces a level detected by the measuring receiver, that is equal to the level noted while the transmitter radiated power was measured, corrected for the change of input attenuation setting of the measuring receiver.

(16) The input level to the substitution antenna shall be recorded as power level in dBm, corrected for any change of input attenuator setting of the measuring receiver.

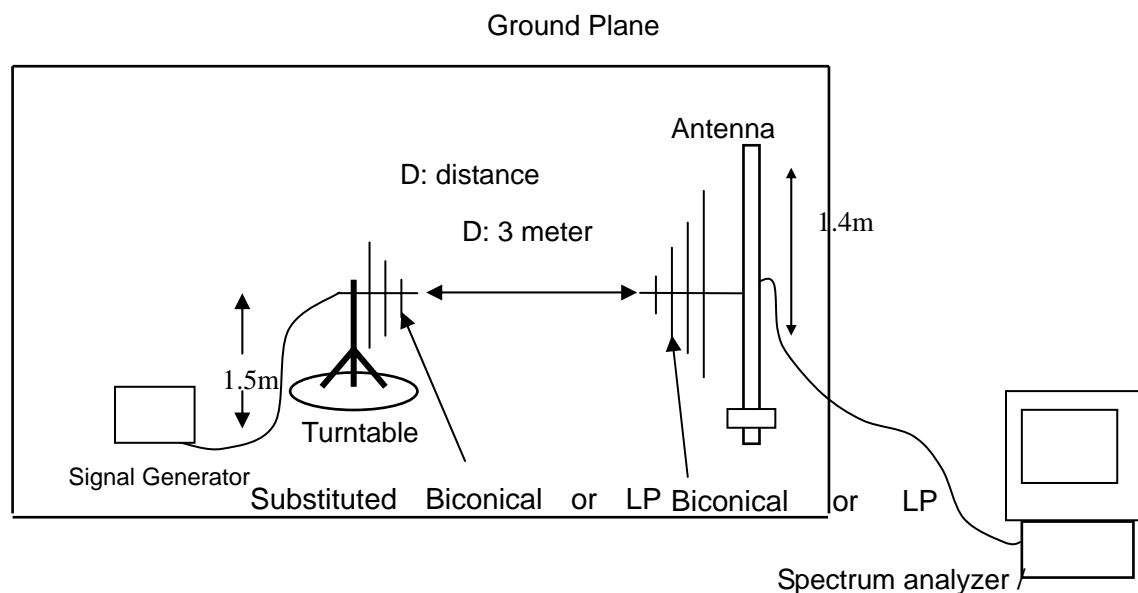
(17) The measurement shall be repeated with the test antenna and the substitution antenna oriented for horizontal polarization.

8.3 TEST SETUP BLOCK DIAGRAM

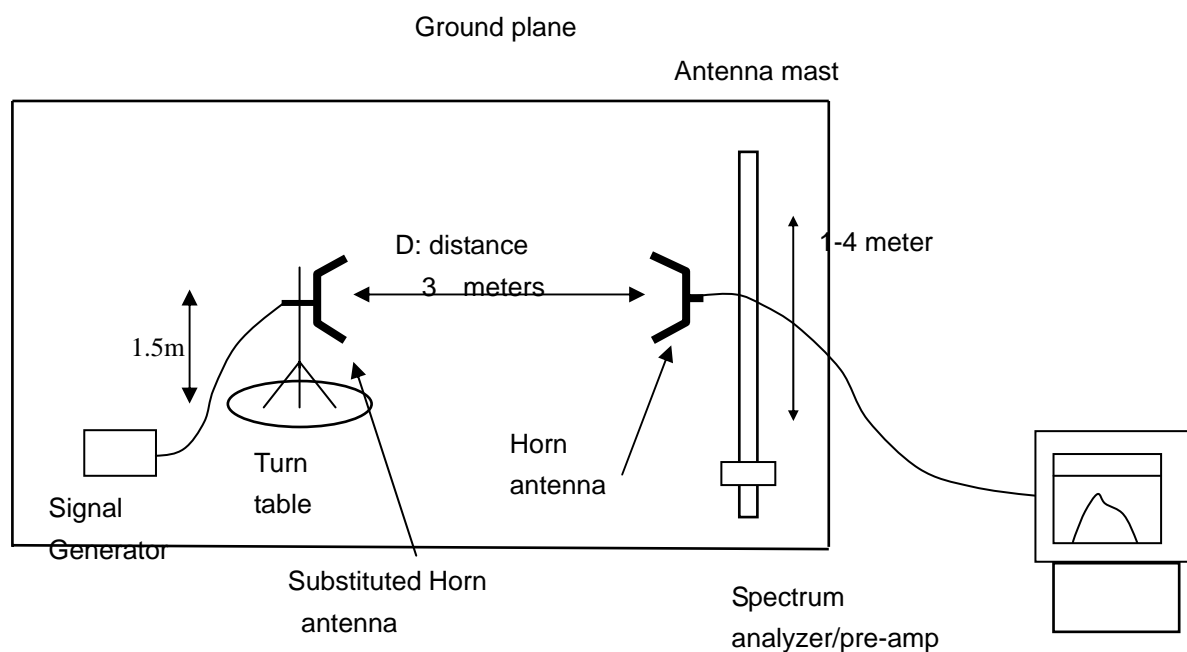


SUBSTITUTION METHOD: (Radiated Emissions)

Radiated Below 1GHz



Radiated Above 1 GHz



8.4 MEASUREMENT EQUIPMENT USED

NAME OF EQUIPMENT	MANUFACTURER	MODEL	SERIAL NUMBER	CAL. DATE
SPECTRUM ANALYZER	AGILENT	E4440A	US44300399	2011.6.27
TEST RECEIVER	R&S	ESCI	N/A	2011.6.27
LOOP ANTENNA	R&S	HFH2-Z2	A0304220	2011.6.27
HORN ANTENNA	EM	EM-AH-10180	N/A	2011.6.27
BROADBAND ANT.	A.H.	SAS-521-4	N/A	2011.6.27

8.5 MEASUREMENT RESULTS

Measurement Result for 12.5 KHz Channel Separation-5W

On any frequency removed from the center of the authorized bandwidth by a displacement
Frequency (f_d in KHz) f_o of more than 12.5 KHz: At least $50 + 10 \log(P)$ dB or 70 dB, which ever is lesser
attenuation.

Limit: At least $50 + 10 \log(P) = 50 + 10 \log(5) = 57(\text{dBc})$

Measurement Result for 12.5 KHz Channel Separation @ 400.025MHz

Emission Frequency (MHz)	Ant. Polarity(H/V)	Measurement Result Below carrier(dBc)	Limit below carrier(dBc)	Result(P/F)
400.025	v	0		pass
800.050	v	68.37(-31.37dBm)	57	pass
1200.08	v	73.61(-36.61dBm)	57	pass
1600.100	v	76.59	57	pass
2000.125	v	78.11	57	pass
2400.150	v	82.45	57	pass
2800.175	v	85.66	57	pass
3200.200	v	88.21	57	pass
3600.225	v	89.73	57	pass
4000.250	v	90.54	57	pass

Measurement Result for 12.5 KHz Channel Separation @ 435.025MHz

Emission Frequency (MHz)	Ant. Polarity(H/V)	Measurement Result Below carrier(dBc)	Limit below carrier(dBc)	Result(P/F)
435.025	v	0		pass
870.050	v	67.74(-30.74dBm)	57	pass
1305.075	v	74.43(-37.43dBm)	57	pass
1740.100	v	79.26	57	pass
2175.125	v	83.71	57	pass
2610.150	v	88.84	57	pass
3045.175	v	90.11	57	pass
3480.200	v	90.64	57	pass
3915.225	v	90.83	57	pass
4350.250	v	91.03	57	pass

Measurement Result for 12.5 KHz Channel Separation @ 469.975MHz

Emission Frequency (MHz)	Ant. Polarity(H/V)	Measurement Result Below carrier(dBc)	Limit below carrier(dBc)	Result(P/F)
499.075	v	0		pass
998.150	v	73.21(-36.21dBm)	57	pass
1497.225	v	74.93(-37.93dBm)	57	pass
1996.300	v	80.77	57	pass
2495.375	v	84.61	57	pass
2994.450	v	90.73	57	pass
3493.525	v	90.81	57	pass
3992.600	v	90.97	57	pass
4491.675	v	91.57	57	pass
4990.750	v	91.84	57	pass

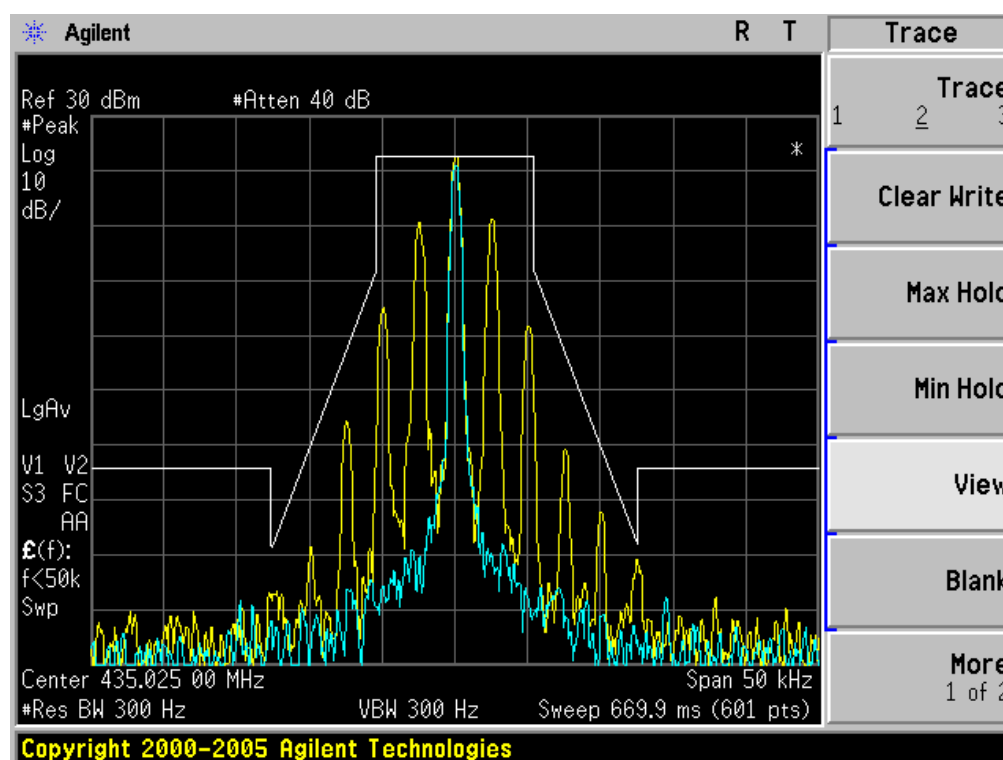
Notes: The emissions were scanned from 30 MHz to 10th harmonics;

8.6 EMISSION MASK PLOT

The detailed procedure employed for Emission Mask measurements are specified as following:

- The transmitter shall be modulated by sine wave audio signal of maximum audio frequency response,
- The level of the audio signal employed is 16 dB greater than that necessary to produce 50% of rated system deviation. Rated system deviation is 2.5 kHz (12.5 kHz channel spacing) .

The Worst Emission Mask for 12.5 KHz channel Separation (5W)



9. MODULATION CHARACTERISTICS

9.1 PROVISIONS APPLICABLE

According to CFR 47 section 2.1047(a), for Voice Modulation Communication Equipment, the frequency response of the audio modulation circuit over a range of 100 to 5000Hz shall be measured.

9.2 MEASUREMENT METHOD

9.2.1 Modulation Limit

- (1). Configure the EUT as shown in figure 1, adjust the audio input for 60% of rated system deviation at 1KHz using this level as a reference (0dB) and vary the input level from –20 to +20dB. Record the frequency deviation obtained as a function of the input level.
- (2). Repeat step 1 with input frequency changing to 300, 1000, 1500 and 3000Hz in sequence.

9.2.2 Audio Frequency Response

- (1). Configure the EUT as shown in figure 1.
- (2). Adjust the audio input for 20% of rated system deviation at 1 KHz using this level as a reference (0 dB).
- (3). Vary the Audio frequency from 100 Hz to 10 KHz and record the frequency deviation.
- (4). Audio Frequency Response = $20\log_{10} (\text{Deviation of test frequency} / \text{Deviation of 1 KHz reference})$.

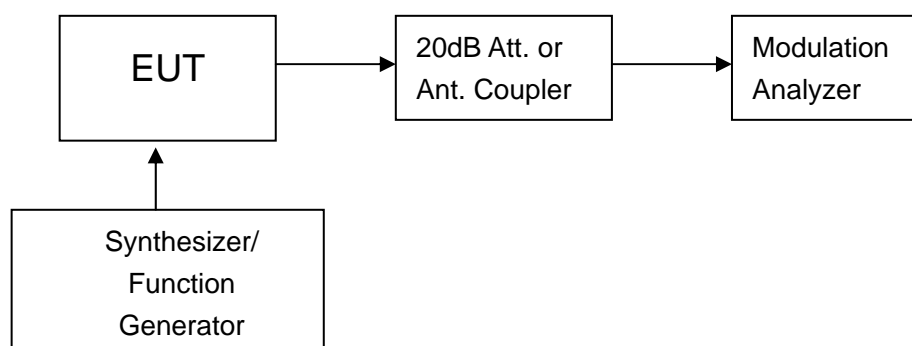


Figure 1: Modulation characteristic measurement configuration

9.3 MEASUREMENT INSTRUMENTS

NAME OF EQUIPMENT	MANUFACTURER	MODEL	SERIAL NUMBER	CAL. DATE
Modulation Analyzer	HP	8920B	N/A	2011-06-27

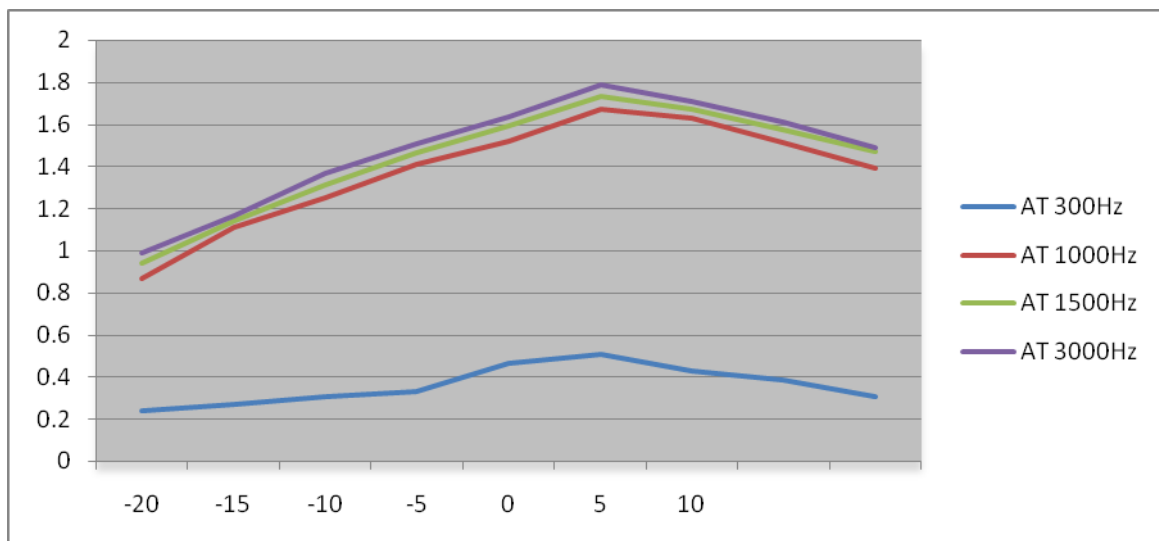
NOTE: 8920B can generate audio modulation frequency.

9.4 MEASUREMENT RESULT

(a). Modulation Limit:

Middle Channel @ 12.5 KHz Channel Separations

Modulation Level (dB)	Peak Freq. Deviation At 300 Hz (KHz)	Peak Freq. Deviation At 1000 Hz (KHz)	Peak Freq. Deviation At 1500 Hz (KHz)	Peak Freq. Deviation At 3000 Hz (KHz)
-20	0.24	0.87	0.94	0.99
-15	0.27	1.11	1.14	1.17
-10	0.31	1.25	1.31	1.37
-5	0.33	1.41	1.46	1.51
0	0.47	1.52	1.59	1.64
5	0.51	1.67	1.73	1.79
10	0.43	1.63	1.67	1.71
15	0.39	1.51	1.57	1.61
20	0.31	1.39	1.47	1.49

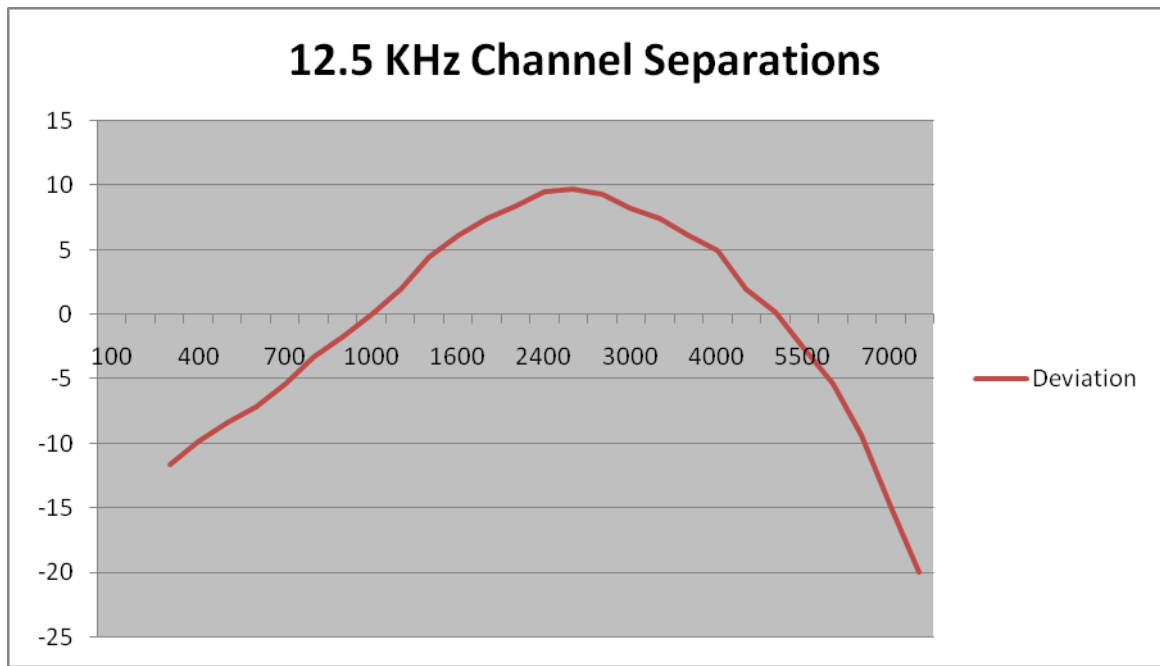


(b). Audio Frequency Response:

12.5 KHz Channel Separations

Frequency (Hz)	Deviation (KHz)	Audio Frequency Response(dB)
100	--	--
200	--	--
300	0.13	-11.70
400	0.16	-9.90
500	0.19	-8.40
600	0.22	-7.13
700	0.27	-5.35
800	0.34	-3.35
900	0.41	-1.72
1000	0.5	0.00
1200	0.63	2.01
1400	0.83	4.40
1600	1.01	6.11
1800	1.17	7.38
2000	1.32	8.43
2400	1.49	9.48
2500	1.53	9.71
2800	1.46	9.31
3000	1.29	8.23
3200	1.17	7.38
3600	1.01	6.11
4000	0.88	4.91
4500	0.63	2.01
5000	0.51	0.17
5500	0.37	-2.62
6000	0.27	-5.35
6500	0.17	-9.37
7000	0.09	-14.89
7500	0.05	-20.00
9000	--	--
10000	--	--
14000	--	--
18000	--	--
20000	--	--
30000	--	--

Frequency Response of Middle Channel



10. MAXIMUM TRANSMITTER POWER (CONDUCTED OUTPUT POWER)

AND CONDUCTED SPURIOUS EMISSION

10.1 PROVISIONS APPLICABLE

Per FCC §2.1046 and §90.205: Maximum ERP is dependent upon the station's antenna HAAT and required service area.

RS-119 and §5.4: The output power shall be within ± 1.0 dB of the manufacturer's rated power.

10.2 TEST PROCEDURE

The RF output of Two-way Radio was connected to a spectrum analyzer through an appropriate attenuator.

The transmitter shall be modulated by sine wave audio signal of maximum audio frequency response

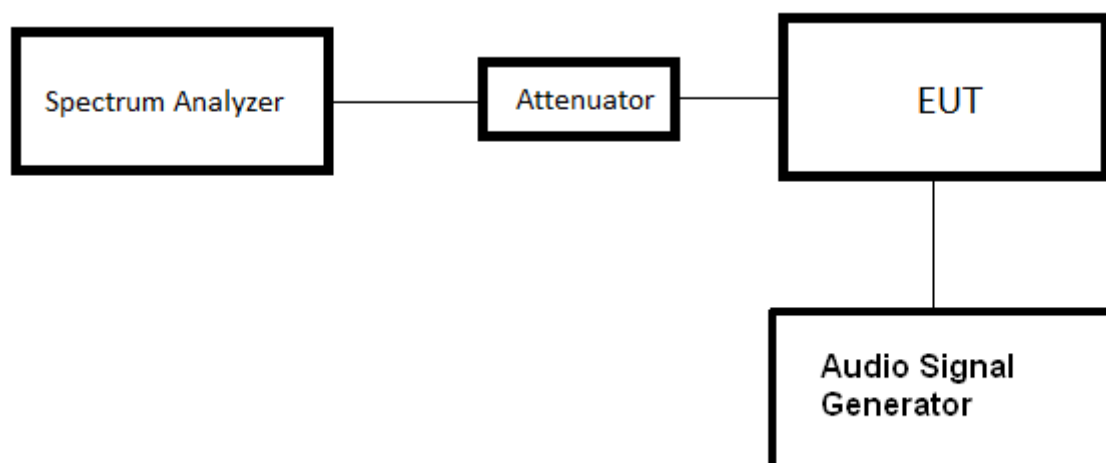
The level of the audio signal employed is 16 dB greater than that necessary to produce 50% of rated system deviation. Rated system deviation is 2.5 kHz (12.5 kHz channel spacing)

Measure and record the transmitter output power, using a measurement (resolution) bandwidth at least two to three times the occupied bandwidth for transmitters equipped to capture the true peak emission of the equipment under test.

10.3 TEST INSTRUMENTS

NAME OF EQUIPMENT	MANUFACTURER	MODEL	SERIAL NUMBER	CAL. DATE
SPECTRUM ANALYZER	AGILENT	E4440A	N/A	2011.6.27

10.4 TEST CONFIGURATION



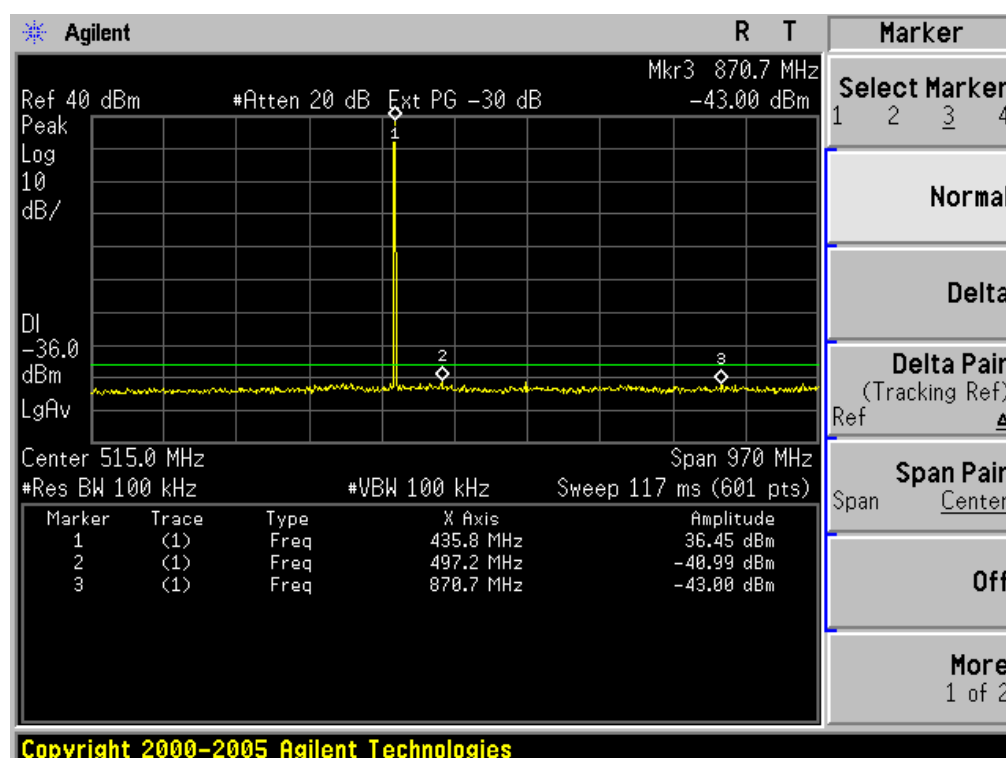
10.5 TEST RESULT

The maximum Conducted Power (CP) is
5 W for 12.5 KHz Channel Separation

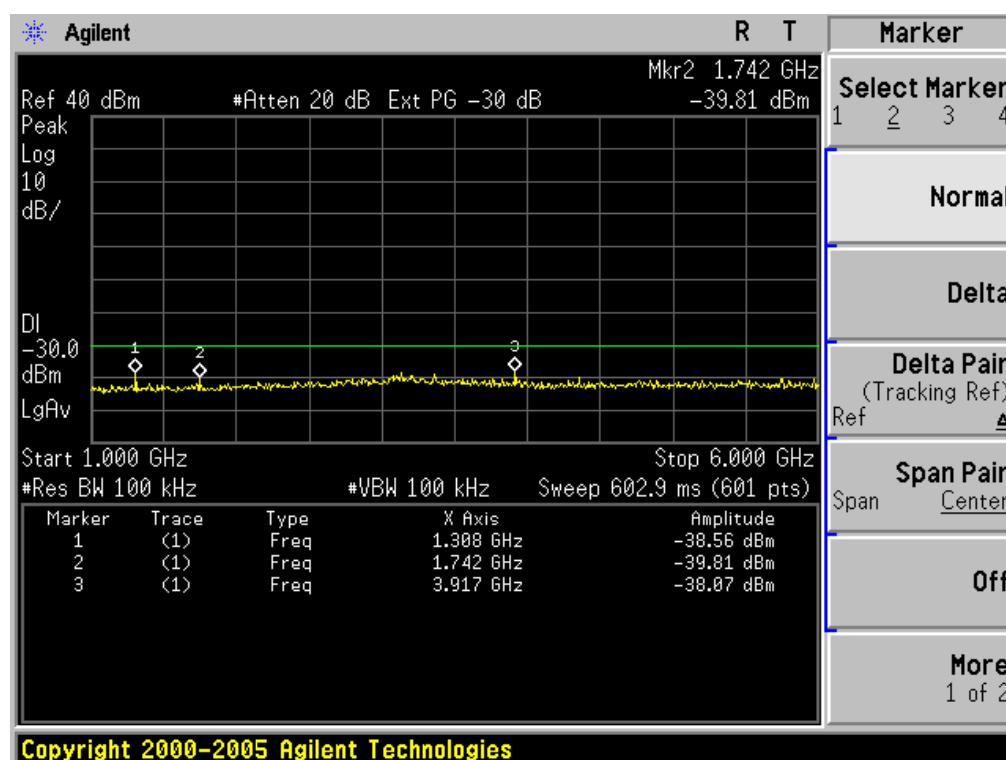
Conducted Power Measurement Results					
Channel Separation	Channel	Measurement Result (dBm)	Rated Power (dBm)	Tolerance (dBm)	Average power(dBm)
		For 37dBm(5W)			For 37dBm(5W)
12.5 KHz	Bottom(400.025MHz)	36.41	36.99	-0.58	33.39
	Middle(435.025MHz)	36.45	36.99	-0.54	33.44
	Top (469.975MHz)	36.37	36.99	-0.62	33.34

10.6 CONDUCT SPURIOUS PLOT

Conducted Spurious Emission(worst) @ 435.025MHz (30MHz-1GHz)



Conduct Spurious Emission(worst) @ 465.000MHz (1GHz-6GHz)



11. TRANSMITTER FREQUENCY BEHAVIOR

11.1 PROVISIONS APPLICABLE

Section 90.214

Time intervals ^{1, 2}	Maximum frequency difference ³	All equipment	
		150 to 174 MHz	421 to 512 MHz
Transient Frequency Behavior for Equipment Designed to Operate on 25 kHz Channels			
t ₁ ⁴	± 25.0 kHz	5.0 ms	10.0 ms
t ₂	± 12.5 kHz	20.0 ms	25.0 ms
t ₃ ⁴	± 25.0 kHz	5.0 ms	10.0 ms
Transient Frequency Behavior for Equipment Designed to Operate on 12.5 kHz Channels			
t ₁ ⁴	± 12.5 kHz	5.0 ms	10.0 ms
t ₂	± 6.25 kHz	20.0 ms	25.0 ms
t ₃ ⁴	± 12.5 kHz	5.0 ms	10.0 ms
Transient Frequency Behavior for Equipment Designed to Operate on 6.25 kHz Channels			
t ₁ ⁴	± 6.25 kHz	5.0 ms	10.0 ms
t ₂	± 3.125 kHz	20.0 ms	25.0 ms
t ₃ ⁴	± 6.25 kHz	5.0 ms	10.0 ms

¹ t_{on} is the instant when a 1 kHz test signal is completely suppressed, including any capture time due to phasing.

t_1 is the time period immediately following t_{on} .

t_2 is the time period immediately following t_1 .

t_3 is the time period from the instant when the transmitter is turned off until t_{off} .

t_{off} is the instant when the 1 kHz test signal starts to rise.

² During the time from the end of t_2 to the beginning of t_3 , the frequency difference must not exceed the limits specified in § 90.213.

³ Difference between the actual transmitter frequency and the assigned transmitter frequency.

⁴ If the transmitter carrier output power rating is 6 watts or less, the frequency difference during this time period may exceed the maximum frequency difference for this time period.

11.2 TEST METHOD

TIA/EIA-603 2.2.19

11.3 TEST INSTRUMENTS

NAME OF EQUIPMENT	MANUFACTURER	MODEL	SERIAL NUMBER	CAL. DATE
Signal Generator	R&S	SMT02	A0304261	2011.6.27
Storage Oscilloscope	Tektronix	TDS3052	B017447	2011.6.27

11.4 DESCRIBE LIMIT LINE OF TRANSMITTER FREQUENCY BEHAVIOR

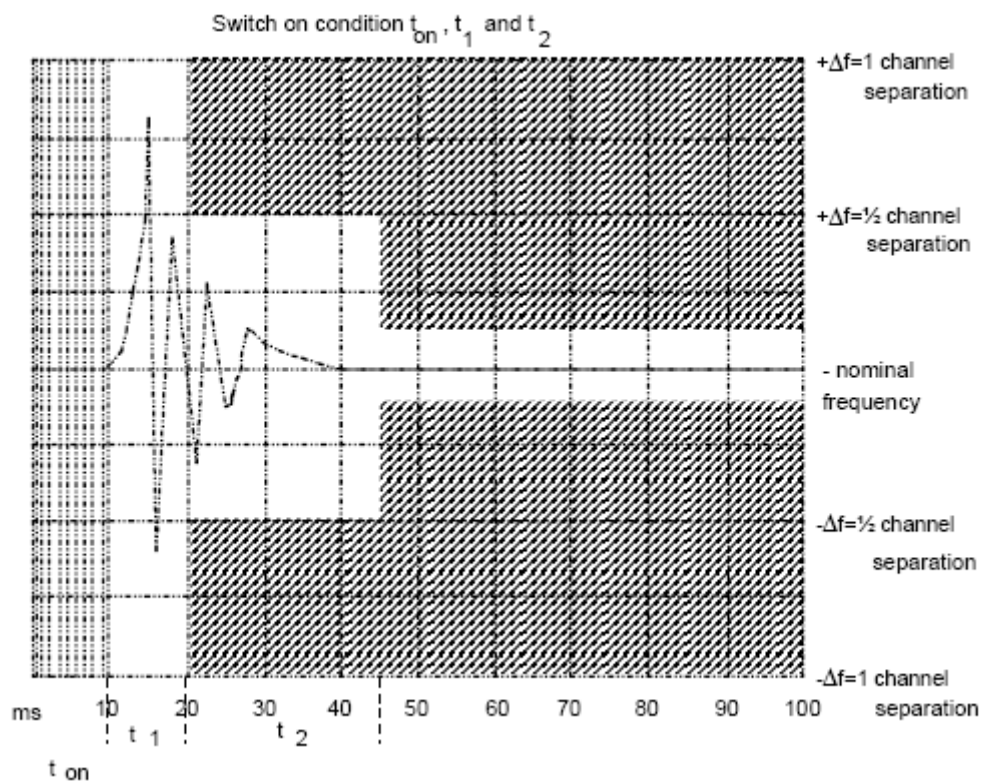
ton: The switch-on instant t_{on} of a transmitter is defined by the condition when the output power, measured at the antenna terminal, exceeds 0,1 % of the full output power (-30 dBc).

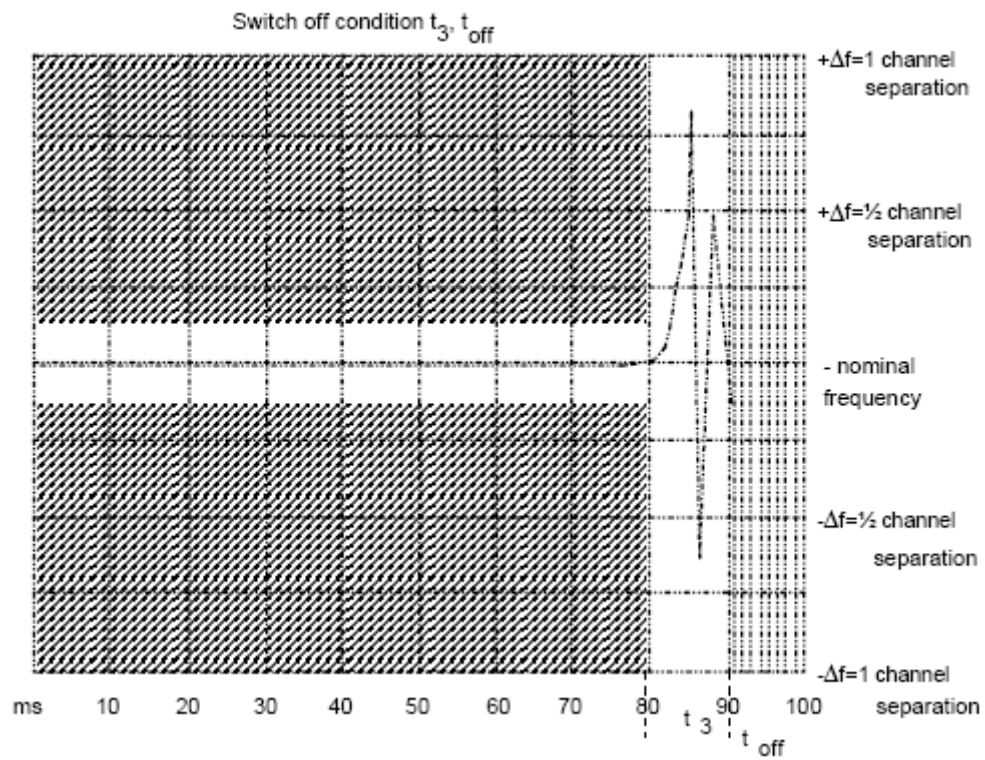
t1: period of time starting at t_{on} and finishing according to above 11.1

t2: period of time starting at the end of t_1 and finishing according to above 11.1

toff: switch-off instant defined by the condition when the output power falls below 0,1 % of the full output power (-30 dBc).

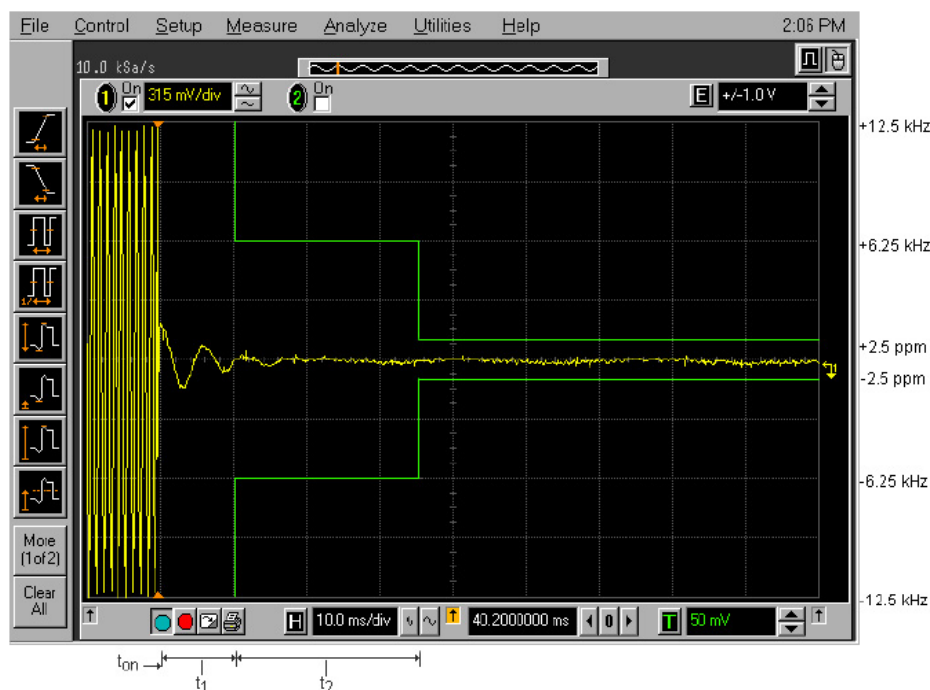
t3: period of time that finishing at t_{off} and starting according to above 11.1



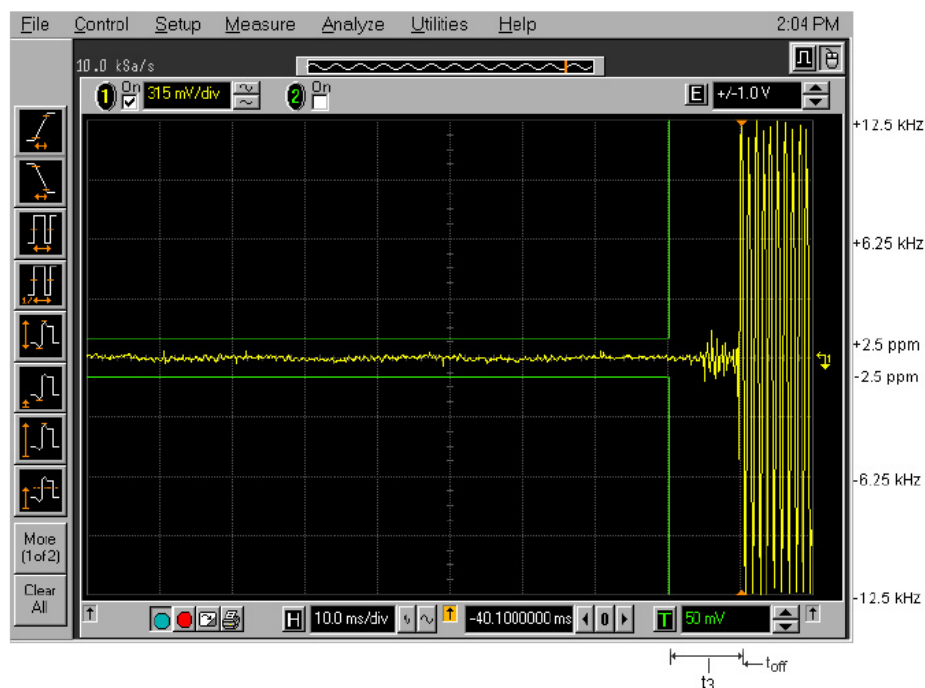


11.5 MEASURE RESULT

Transmitter Frequency Behaviour @ 12.5 KHz Channel Separation--Off to On



Transmitter Frequency Behaviour @ 12.5 KHz Channel Separation--On to Off



12. RADIATED EMISSION ON RECEIVING MODE

12.1 PROVISIONS APPLICABLE

FCC Part 15 Subpart B Section 15.109

12.2 TEST METHOD

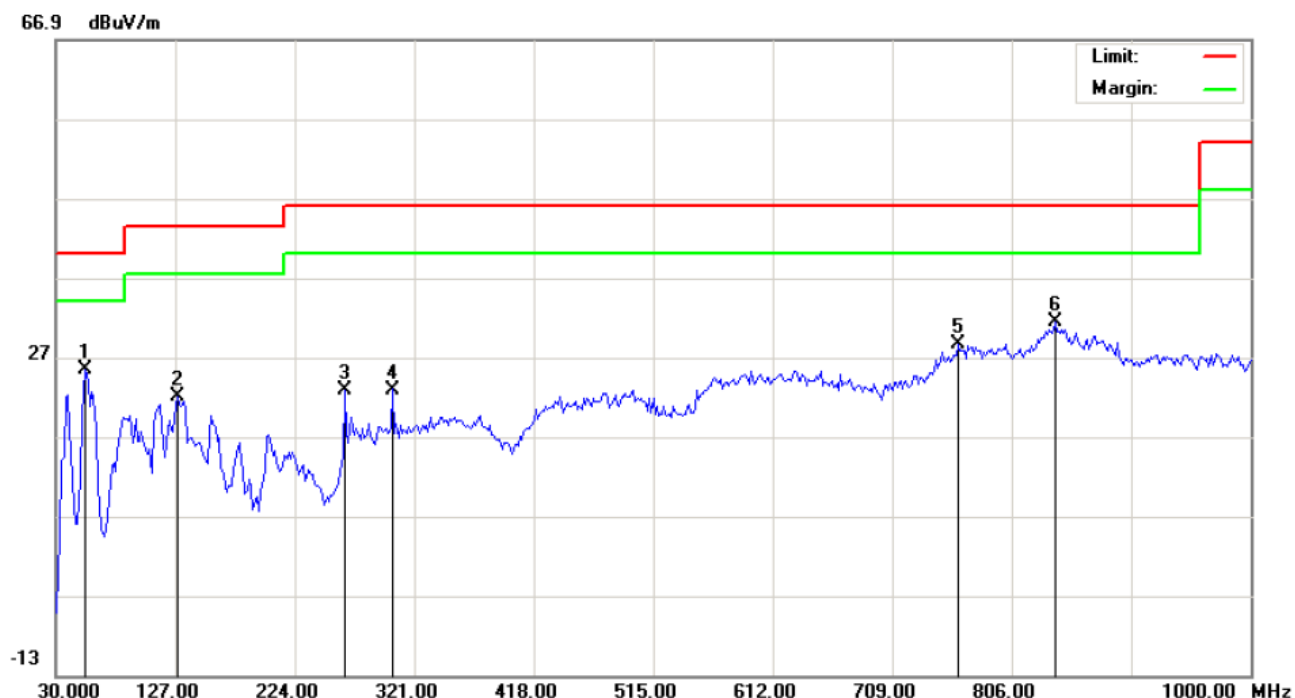
ANSI C 63.4: 2003

12.3 TEST INSTRUMENTS

NAME OF EQUIPMENT	MANUFACTURER	MODEL	SERIAL NUMBER	CAL. DATE
SPECTRUM ANALYZER	AGILENT	E4440A	N/A	2011.6.27
TEST RECEIVER	R&S	ESCI	N/A	2011.6.27
LOOP ANTENNA	R&S	HFH2-Z2	A0304220	2011.6.27
HORN ANT.	EM	EM-AH-10180	N/A	2011.6.27
BROADBAND ANT.	R&S	HL562	A0304224	2011.6.27

12.4 MEASURE RESULT (MEASURED AT 3M USING FCC PART15 B LIMITS)

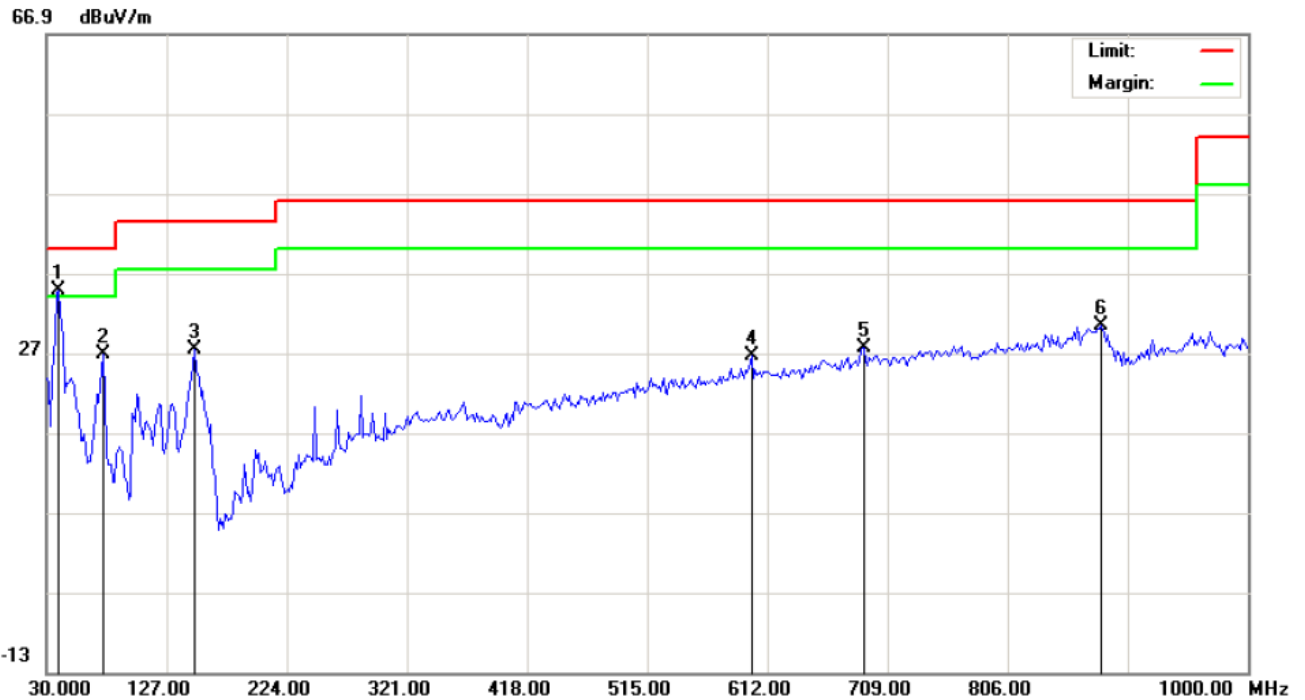
RADIATED EMISSION TEST RESULTS – HORIZONTAL



Site: site #1	Polarization: Horizontal	Temperature: 26
Limit: FCC Class B 3M Radiation	Power: AC 120V/60Hz	Humidity: 60 %
EUT: two way radio	Distance: 3m	
M/N: CD-528		
Mode: Charging		
Note:		

No.	Mk	Freq.	Reading	Factor	Measurement	Limit	Over	Detector	Antenna Height	Table Degree	Comment
		MHz	dBuV	dB/m	dBuV/m	dBuV/m	dB		cm	degree	
1	*	54.2500	25.01	0.43	25.44	40.00	-14.56	peak			
2		128.6167	8.14	13.89	22.03	43.50	-21.47	peak			
3		264.4167	8.05	14.71	22.76	46.00	-23.24	peak			
4		303.2167	5.69	17.21	22.90	46.00	-23.10	peak			
5		762.3500	1.02	27.62	28.64	46.00	-17.36	peak			
6		841.5667	0.19	31.17	31.36	46.00	-14.64	peak			

RADIATED EMISSION TEST RESULTS – VERTICAL



Site: site #1	Polarization: Vertical	Temperature: 26
Limit: FCC Class B 3M Radiation	Power: AC 120V/60Hz	Humidity: 60 %
EUT: two way radio	Distance: 3m	
M/N: CD-528		
Mode: Charging		
Note:		

No.	Mk	Freq.	Reading	Factor	Measurement	Limit	Over	Detector	Antenna Height	Table Degree	Comment
		MHz	dBuV	dB/m	dBuV/m	dBuV/m	dB		cm	degree	
1	*	39.7000	28.85	5.88	34.73	40.00	-5.27	peak			
2		75.2667	21.09	5.75	26.84	40.00	-13.16	peak			
3		149.6333	8.46	18.90	27.36	43.50	-16.14	peak			
4		599.0667	1.72	24.91	26.63	46.00	-19.37	peak			
5		689.6000	1.37	26.21	27.58	46.00	-18.42	peak			
6		881.9833	0.35	29.98	30.33	46.00	-15.67	peak			

13. AUDIO LOW PASS FILTER RESPONSE

13.1 LIMITS

2.1047(a): Voice modulated communication equipment. A curve or equivalent data showing the frequency response of the audio modulating circuit over a range of 100 to 5000 Hz shall be submitted. For equipment required to have an audio low-pass filter, a curve showing the frequency response of the filter or of all circuitry installed between the modulation limiter and the modulated stage shall be submitted.

90.242(b)(8): Recommended audio filter attenuation characteristics are given below:

Audio band	Minimum Attenuation Rel. to 1 KHz Attenuation
3 –20 KHz 20 – 30 KHz	$60 \log_{10}(f/3)$ dB where f is in KHz 50dB

13.2 METHOD OF MEASUREMENTS

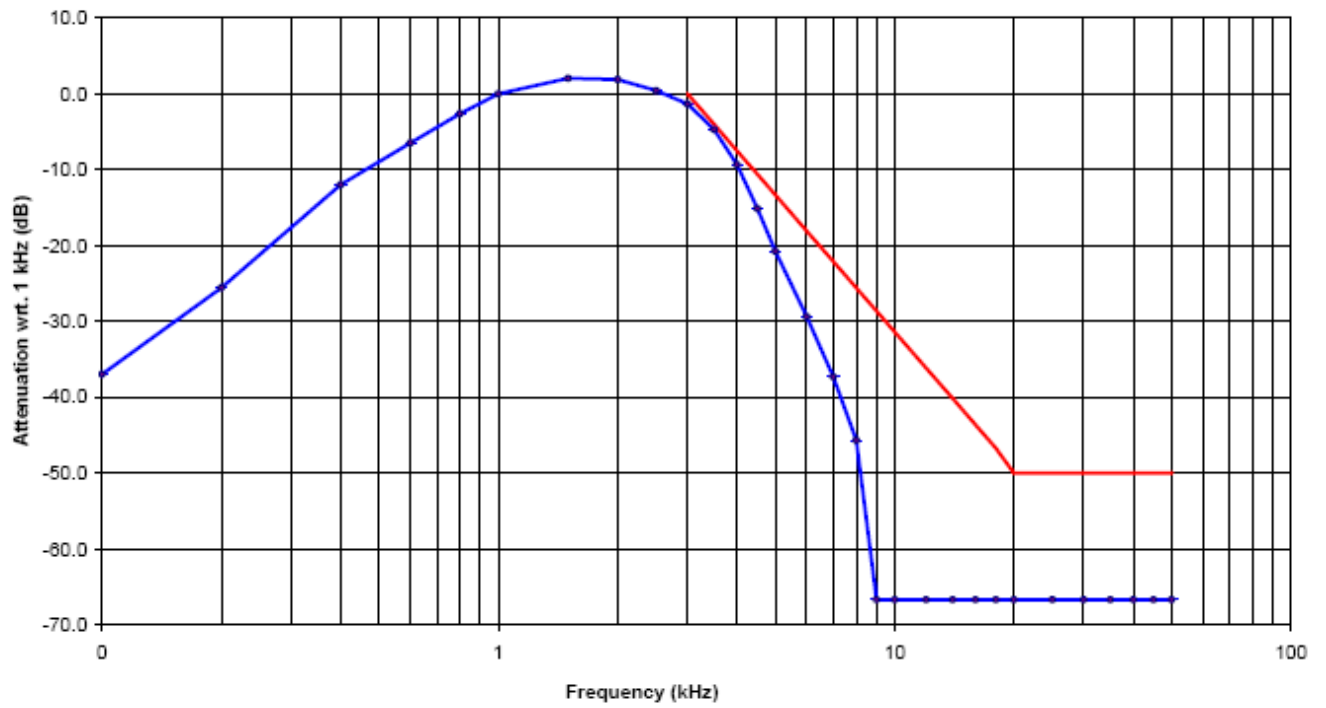
The rated audio input signal was applied to the input of the audio low-pass filter (or of all modulation stages) using an audio oscillator, this input signal level and its corresponding output signal were then measured and recorded using the FFT Digital Spectrum Analyzer. Tests were repeated at different audio signal frequencies from 0 to 50 KHz.

13.3 TEST DATA

12.5 KHz Channel Spacing, F3E, Frequency of All Modulation States

Frequency (KHz)	Audio In (dBV)	Audio Out (dBV)	Attenuation (Out-In) (dB)	Attenuation Rel. to 3 KHz (dB)	Recommender Attenuation (dB)
0.1	-75.79	-30.26	45.5	-36.9	--
0.2	-75.79	-18.84	57.0	-25.5	--
0.4	-75.79	-5.29	70.5	-12.0	--
0.6	-75.79	0.23	76.0	-6.4	--
0.8	-75.79	4.09	79.9	-2.6	--
1.0	-75.79	6.68	82.5	0.0	--
1.5	-75.79	8.75	84.5	2.1	--
2.0	-75.79	8.59	84.4	1.9	--
2.5	-75.79	7.13	82.9	0.5	--
3.0	-75.79	5.35	81.1	-1.3	0
3.5	-75.79	2.00	77.8	-4.7	-4
4.0	-75.79	-2.61	73.2	-9.3	-7
4.5	-75.79	-8.42	67.4	-15.1	-11
5.0	-75.79	-14.06	61.7	-20.7	-13
6.0	-75.79	-22.69	53.1	-29.4	-18
7.0	-75.79	-30.61	45.2	-37.3	-22
8.0	-75.79	-38.96	36.8	-45.6	-26
9.0	-75.79	-60.00	15.8	-66.7	-29
10.0	-75.79	-60.00	15.8	-66.7	-31
12.0	-75.79	-60.00	15.8	-66.7	-36
14.0	-75.79	-60.00	15.8	-66.7	-40
16.0	-75.79	-60.00	15.8	-66.7	-44
18.0	-75.79	-60.00	15.8	-66.7	-47
20.0	-75.79	-60.00	15.8	-66.7	-50
25.0	-75.79	-60.00	15.8	-66.7	-50
30.0	-75.79	-60.00	15.8	-66.7	-50
35.0	-75.79	-60.00	15.8	-66.7	-50
40.0	-75.79	-60.00	15.8	-66.7	-50
45.0	-75.79	-60.00	15.8	-66.7	-50
50.0	-75.79	-60.00	15.8	-66.7	-50

Note: Due to the difficulty of measuring the Frequency Response of the internal low-pass filter, the Frequency Response of All Modulation States is performed to show the roll-off at 3 KHz in comparison with the recommended audio filter attenuation.



APPENDIX I

PHOTOGRAPHS OF SETUP

CONDUCTED EMISSION TEST SETUP



RADIATED TEST SETUP



APPENDIX II

EXTERNAL VIEW OF EUT

TOTAL VIEW OF EUT



TOP VIEW OF EUT



BOTTOM VIEW OF EUT



FRONT VIEW OF EUT



BACK VIEW OF EUT



LEFT VIEW OF EUT



RIGHT VIEW OF EUT



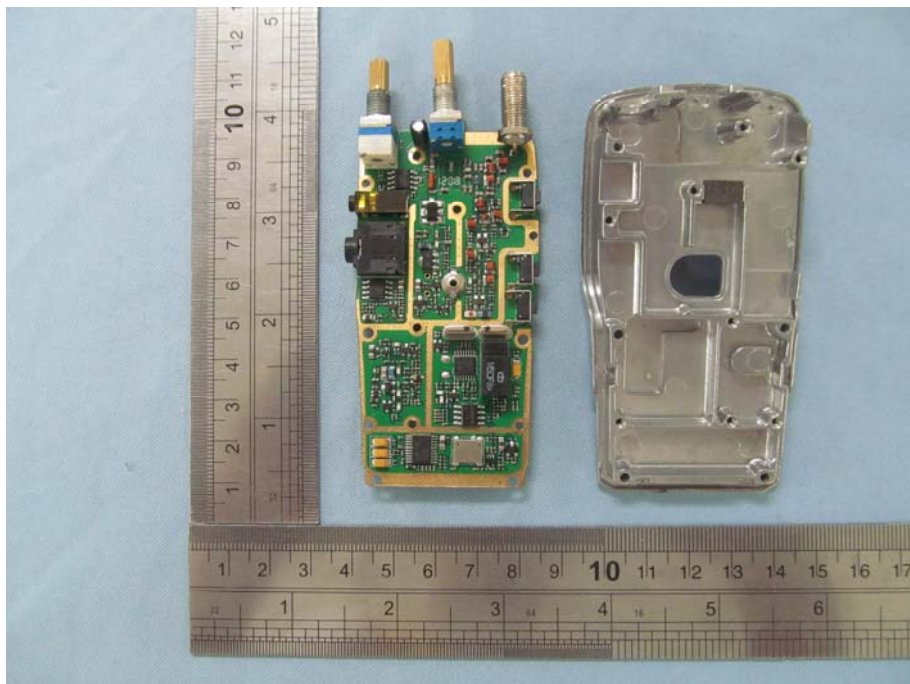
OPEN VIEW OF EUT



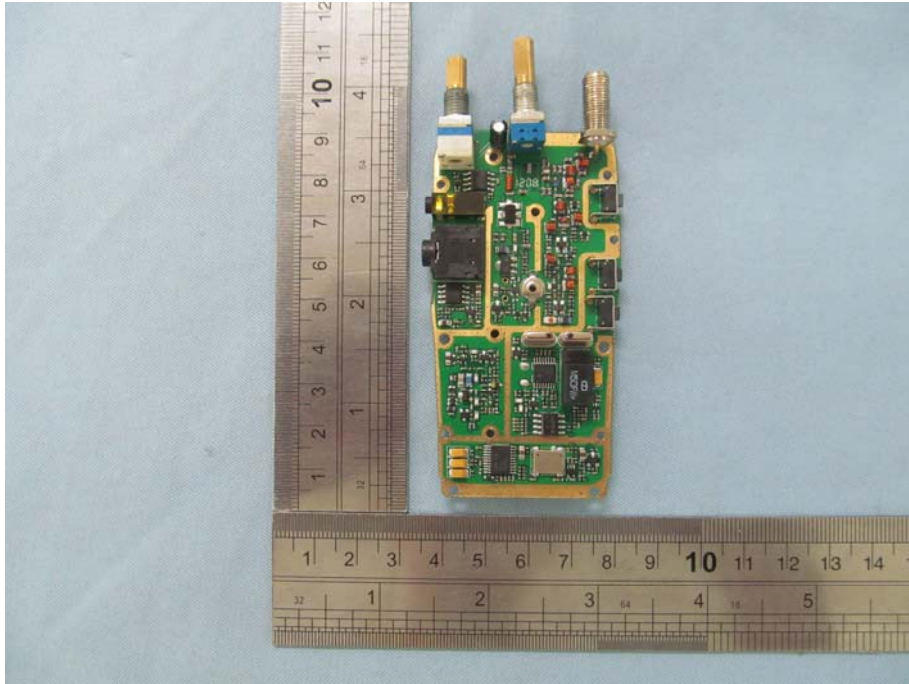
INTERNAL VIEW OF EUT - 1



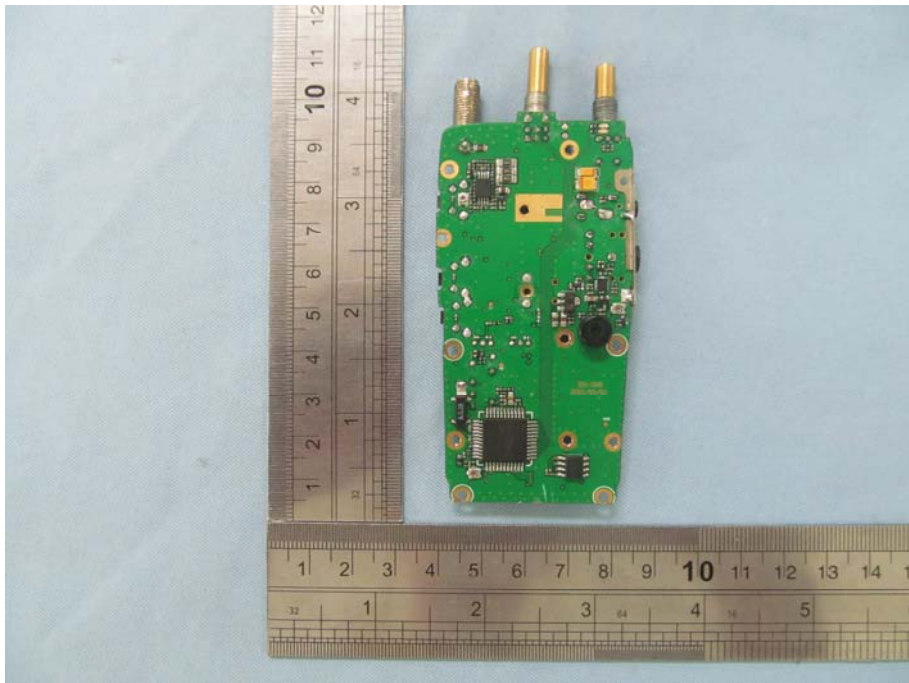
INTERNAL VIEW OF EUT - 2



INTERNAL VIEW OF EUT – 3



INTERNAL VIEW OF EUT – 4



----END OF REPORT----