

Installing PICCA on Windows

Please read this manual thoroughly.

Based by Windows ME

1.Turn on the PC

2.Insert installing CD into CD-ROM drive.

If you see following message on the screen,
choose "English".

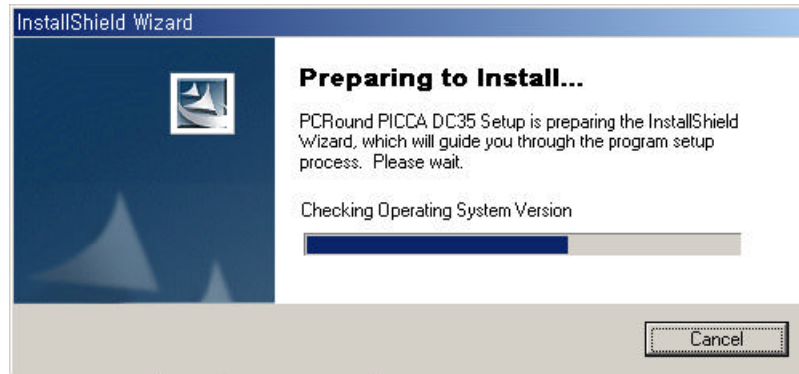


in case of no message,
please click AUTORUN.EXE in the CD-ROM

3. If you see the following picture, click "Install Drive".



4. With the following screen on,
please wait for the process of installation..



5. When installation completed,
you will see the notice that you should restart the PC. (In case
of no restart message, please make sure to reboot PC.)



6. Take out the install CD from CD-ROM drive.
Clicking "Restart", PC starts rebooting.

7. Once PC rebooted, insert batter into Camera like follows

- +

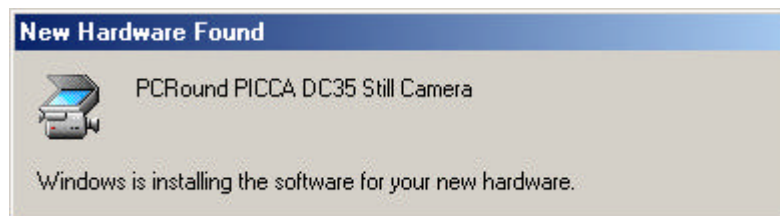


8.Connect the Camera to PC

Please be cautious not to exchange both ends of **USB Cable**



9. if camera registration completed,
various pictures shows on the screen.












10. Please see the back of the Camera.
Following means right connection.



11.Registering Camera on PC is completed

Functions and Description

LCD	Description	Comment
	High Quality Mode Basic Mode 24 cut of 640 X 480	Basic Mode
	Low Quality Mode 120 cut of 320 X 240	
	Video Mode Recording for 30 seconds at the speed of 15frame per secondVideo Mode	
	Video Mode Video recording is processed"S" notice while recording	
	Self Timer Mode Pressing the shutter, Camera automatically takes a picture in 10 seconds with an alarm on high Quality mode only.	
	This notices that the battery is half used.	
	PC Camera Mode This means Camera is used as PCCamera	
	Batter Change Alarm Mode You should exchange the battery on this mode after the Camera data	
	Data BackUp Mode This means Camera Memory is full of data and not more data storage is possible. Please Camera data back up	

General Specification

Sensor	CMOS 1/4" 318,500 pixels	
Pixel array size	664 × 492	
Pixel resolution	CIF : 320 × 240 VGA : 640 × 480	
Lens	Focal Length	5.70mm
	Black Focal Length	3.75mm(in Air)
	Focus Range	40mm ~ ∞
	Fno.	F2.0
View Finder	Sight Angle	43.6°
	Sight Rate	0.53X
	Sight Scale	80% ± 5%
Pixel size	6.0 × 6.0 μm ²	
S/N Ratio	>48dB	
Data format	YUV 4 : 2 : 2, YUV 4 : 2 : 0, RGB Raw Data	
Exposure	Auto	
Interface	USB	
Scan type	Progressive	
Sensitivity	2.0V / Lux.sec	
White Balance	Auto/Programmeable	
Frame Rate	CIF : 30 frame <u>VGA : 15 frame</u>	
Self timer	10 sec.	
Memory	8M, SDRAM	
Video Cam	8M(30sec.)	
Compression	JPEG	
Image Quality	Hight Quality : 24 cut	
	Low Quality : 120 cut	
LCD	3-Digit 22-Segment LCD	
Operating System	Windows 98 / 98se / Me / 2000 / XP	
Power source	Battery 1.5 × 2(AAA size), 5V from USB port	
Weight	50g 이하	
Dimension	55.6(H) × 82.0(W) × 20.5(T)	

Certification Information

Note: This equipment has been tested and found to comply with the limit for a Class B digital device, pursuant to part 15 of the FCC Rules.

These limits are designed to provide reasonable protection against harmful interference in a residential installation. This equipment generates, uses, and can radiate radio frequency energy and, if not installed and used in accordance with the instructions. If this equipment does cause harmful interference to radio communications. However, there is no guarantee that interference will not occur in a particular installation. IF this equipment does cause harmful interference to radio or television reception, which can be determined by turning the equipment off and on, the user is encourage to try to correct the interference by one or the following measures:

- Reorient or relocate the receiving antenna.
- Increase the separation between the equipment and receiver.
- Connect the equipment into an outlet on a circuit different from that to which the receiver is connected
- Consult the dealer or an experience radio TV technician for help

Change or modification not expressly approved by the party responsible for Compliance could void the user's authority to operate the equipment