

EXHIBIT 5

User's Manual

User's Manual

INSTRUCTION:

Scroll Mouse, can bring you the most comfort and increase your work efficiency as well. Meanwhile, the wheel functions can let you have the best accuracy in Office 97. It's including zoom, scroll, horizontal scroll & vertical scroll, etc.

CONNECTING The Mouse:

For Serial ports:

Connect the mouse cable into the 9-pin Serial port on the computer.

For PS/2 ports:

Remove the 9-pin adaptor and connect the mouse cable into the 6-pin PS/2 port.

INSTALLING Scroll Mouse Software Under Windows 95/98/NT:

Make sure the mouse cable is plugged into the right port before installing the mouse software. The installation steps is as following:

Note: Our software supports multi-languages, please select your system Windows OS version for installation.

1. Start Windows and insert software diskette into drive A or B.
2. Click "Start" on the Taskbar and select "Run".
3. From the Run dialog box, select(or type) A:\SETUP or B:\SETUP and enter "ENTER".
4. Select your language and click "NEXT".

For example: if your Windows OS is Chinese Version, you only can choose Chinese or English but other languages.

5. From the "Select Device Type" dialog box choose "PS/2 Port" or "Serial Port" and then click "NEXT".
6. Follow the on-screen instructions.

USING Scroll Mouse Software:

To access the Scroll Mouse software, double-click the mouse icon on the Windows Taskbar to display the Mouse Properties tabs.

- (1) Choosing options for the scroll mouse(fig.1)

1. Wheel Mode:

* System(Intelli-Mouse) Mode

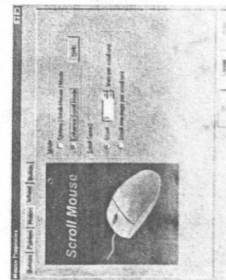
* Enhance Scroll Mode

PS. Please click "Help" for further information.

2. Scroll Speed

* Per scroll unit from one line to 10 lines.

* Scroll one page per scroll unit.



(2) Making Button Assignment and Configuring the Wheel(fig.2)

1. Universal Scroll :

Control the directions and speed of scrolling bar by moving mouse. You can setup the vertical or horizontal scrolling directions and speed.

2. Zoom :

Magnify or minimize any characters or illustrations. You can adjust the zoomed area or zoom factor by pushing the wheel forward or back.

3. AutoScroll :

Move the mouse once in the direction you want to scroll.

4. Vertical Wheel Cooperate Functions :

- * Zoom in Office 97(Ctrl Lock)

You can use this function to magnify or minimize the documents in Office 97.

- * Shift Lock

You can use under Microsoft Outlook.

- * Switch Vertical to Horizontal Wheel

You can press the wheel buttons to change the scroll direction from vertical to horizontal. Just exchange the scroll directions by clicking the wheel button once.

It's specially designed for reading documents.

5. Others :

There are 38 kinds of functions. Please setup as your personal desire.

UNINSTALLING Scroll Mouse Driver:

1. Click "Start" on the Taskbar and from "Program Files" select "PERFECT SERIES".
2. Please choose "Remove Scroll Mouse 2.0".
3. After installation, please select a proper mouse driver as your need.

MAINTAINING The Mouse:

If the cursor skips or moves abnormally, you may need to clean the ball of your mouse.

Following are several simple steps for maintaining your mouse:

1. On the bottom of the mouse, press in the direction of open arrow imprinted on the ball cover and take out the ball.
2. Clean the ball, rollers and the ball-cage using a cotton swab or cloth moistened with isopropyl(rubbing) alcohol.
3. Replace the ball and cover.

ACS2000-F006 / Mouse Model HL-898W
Shenzhen Hisiton Electronics Co., Ltd.
FCC ID: O9XXHL-898W

Federal Communication Commission Interference Statement

This equipment has been tested and found to comply with the limits for a Class B digital device, pursuant to Part 15 of the FCC Rules. These limits are designed to provide reasonable protection against harmful interference in a residential installation. This equipment generates, uses and can radiate radio frequency energy and, if not installed and used in accordance with the instructions, may cause harmful interference to radio communications. However, there is no guarantee that interference will not occur in a particular installation. If this equipment does cause harmful interference to radio or television reception, which can be determined by turning the equipment off and on, the user is encouraged to try to correct the interference by one of the following measures:

- Reorient or relocate the receiving antenna.
- Increase the separation between the equipment and receiver.
- Connect the equipment into an outlet on a circuit different from that to which the receiver is connected.
- Consult the dealer or an experienced radio/TV technician for help.

FCC Caution: Any changes or modifications not expressly approved by the party responsible for compliance could void the user's authority to operate this equipment.