

AnotherEYES™

QUICKSTART GUIDE

Copyright © 2000 AnotherWorld Inc. All rights reserved.

Wicked3d are trademarks and/or registered trademarks of Metabyte, Inc.

AWQSE 2000-08-02

Sections:

1. Installing Hardware
2. Installing Software
3. Uses to Wicked3D Driver
4. Uses to AnotherWorld Software

Section 1: Installing Hardware

1. Install the Another EYES Hardware after turn off the power of the computer.
2. Disconnect the monitor cable connected the computer from the computer.
3. Connect the VGA pass through adapter of Another EYES to the place that monitor cable was.
4. Re-connect the monitor cable to VGA pass through adapter.
5. After disconnect the Keyboard cable, connect the Keyboard Adapter to the place that Keyboard cable was. Connect the Keyboard cable to Keyboard Adapter.
6. Lastly, connect the Another EYES Transmitter cable to Another EYES goggle.
7. Turn on the power of the computer

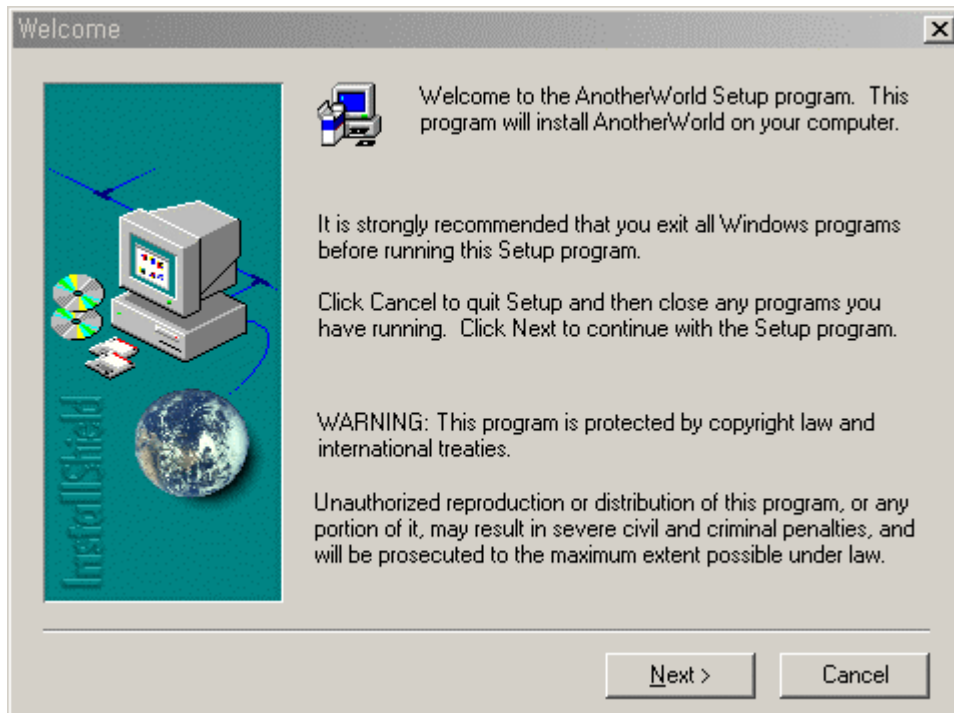
Section 2: Installing Software

In this Another EYES CD, there's a lot of VR image samples and four software program like VR Pic, VR Stream, Stereoshop, VR Scape.

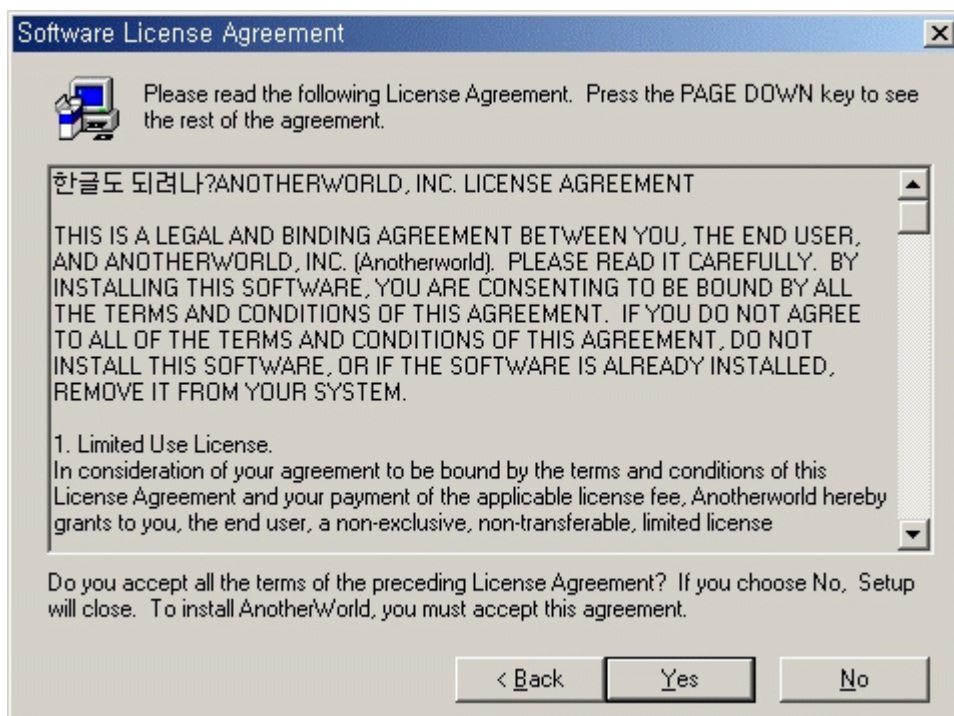
To install the program, move to the Korean folder of Another EYES CD. After that, run SETUP.EXE.

Attached serial No. would be needed when you install the four software program in Another EYES CD.

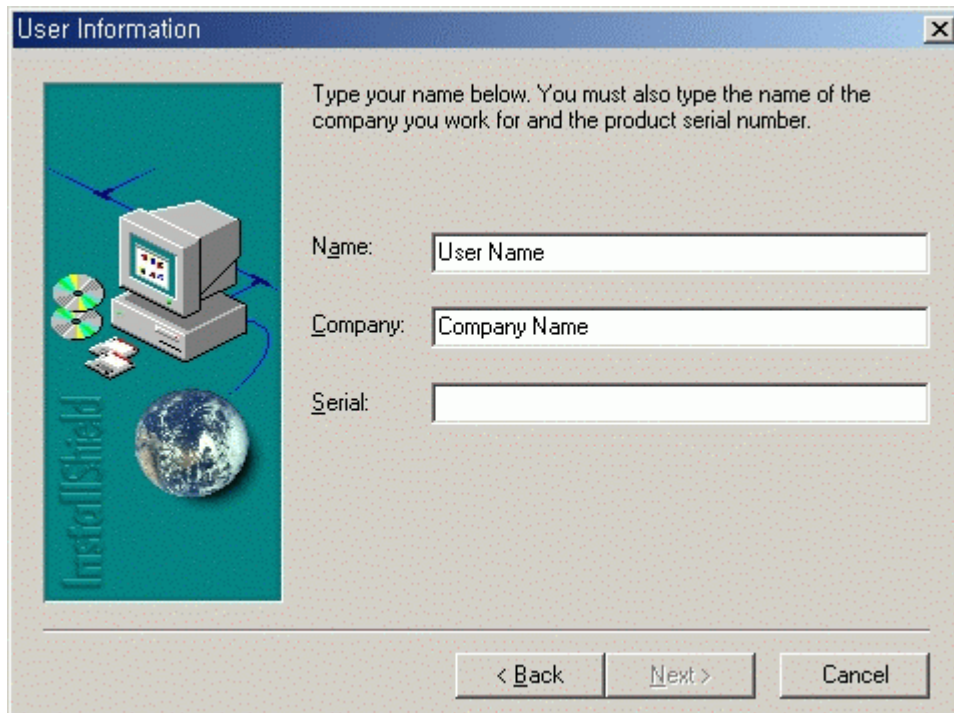
1. After run SETUP.EXE , you can see a picture as follows. Press 'Next' button.



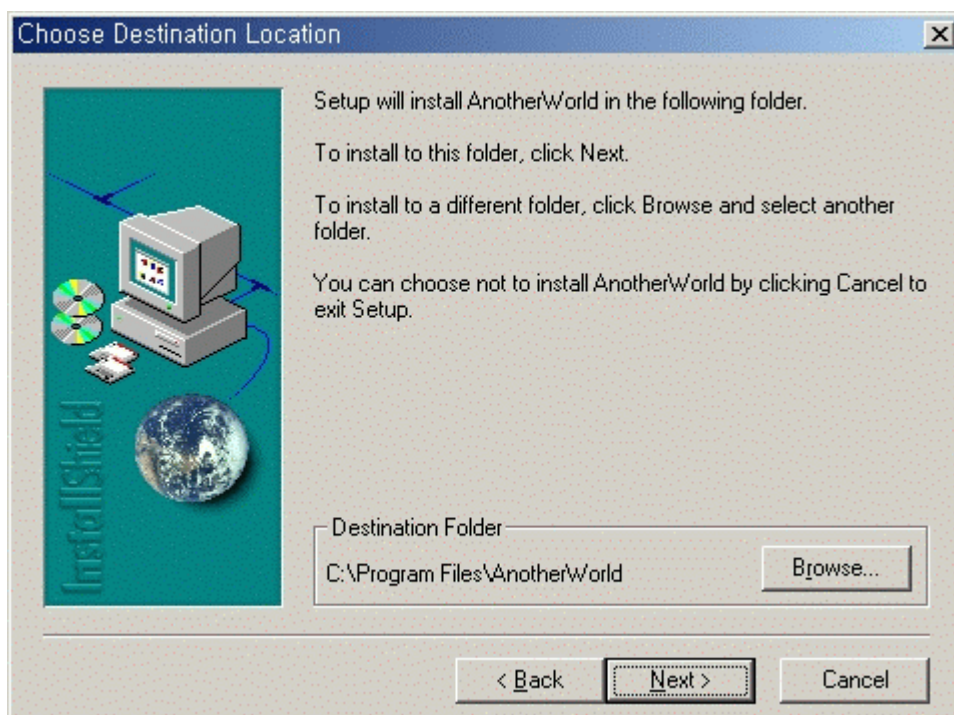
2. This picture concerned about Software License. To continue the installing a program, Press 'Yes' button.



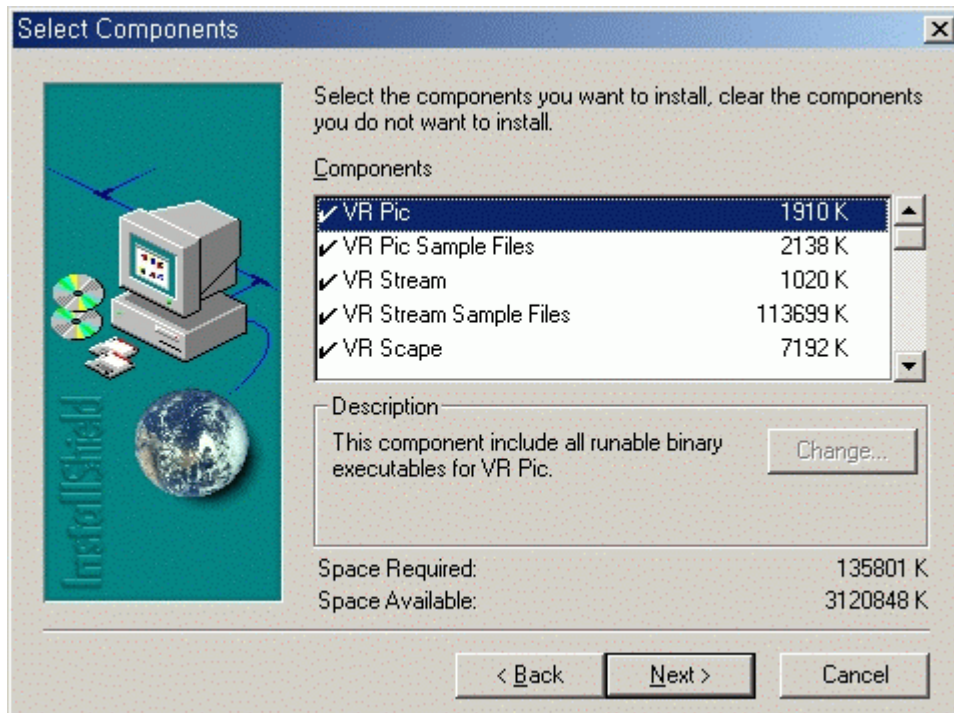
3. This picture for input the information of the user. Input the user information and serial No. Provided, Then press 'Next' button.



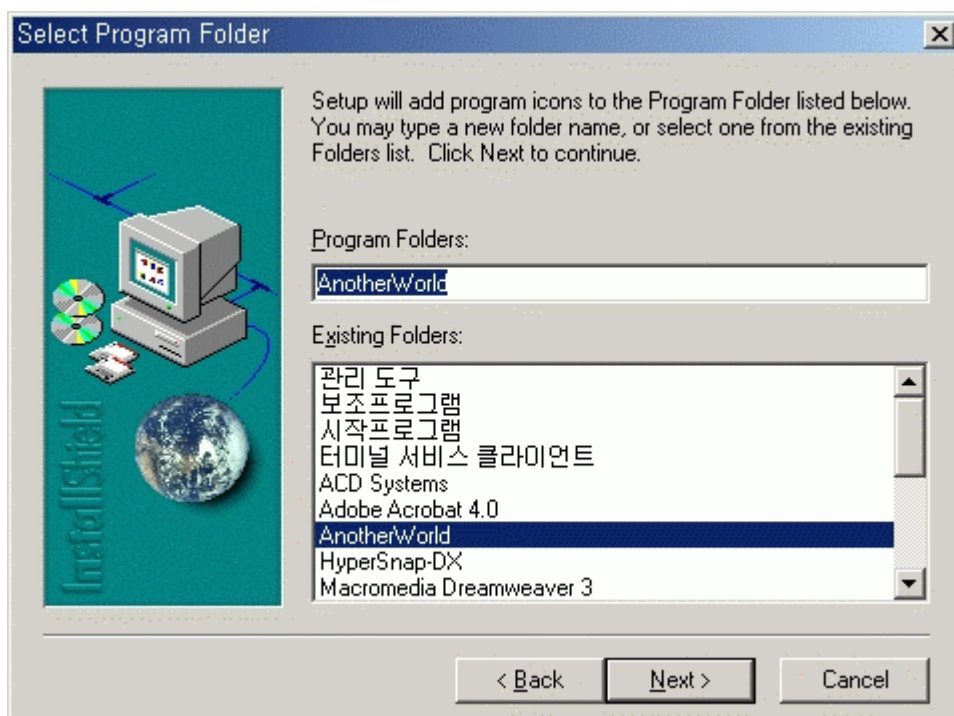
4. This picture for choosing the directory to install. Basic installing directory is C:\WPrograms Files\AnotherWorld. If you want to change the directory, press 'Browse' button. Then, change the directory.



5. This picture for choosing the program to install. After choosing the program, press 'Next' button.



6. This picture for choosing the folder to install the program. If you want to change the program, Change the name in the program folder. Then press 'Next' button.



7. Program installing is completed.

Installing the Wicked3D Game Driver

Wicked3D is the exclusive use driver for viewing the game in 3-dimensional way. After install the Wicked3D program, you can see the game in 3-dimensional way.

1. Turn on the computer power, then start 'Window 95/98'
2. Put the Wicked3D driver CD in the CD-ROM drive.
3. 'Window95/98' will auto-run by install-program. To install the Wicked3D driver, Press 'Yes' button. Then program installing will start.
4. After unlock the compressed file by InstallShield to hard-disk, 'Software License Agreement' dialog box will show up. After read carefully Software License Agreement, press 'Yes' button. Then installing program will proceed.
8. Note : If press 'No' button, program installing would be cancel
5. After 'Medical Warning' dialog box appeared, read carefully dialog box. Press 'Yes' Button, then installing will proceed.
9. Note : If press 'No' button, program installing would be cancel.
6. Next seeing is Wicked3D setup/update dialog box. After choosing the graphic card you use, press 'Yes' button, program will proceed. You must choose the same graphic card with the one you use in the list.
7. If 'Setup Complete' dialog box show up, program installing is successful.
8. After re-start the computer, you can use the Wicked3D driver.

Section 3: Uses to Wicked3D Driver

1. Run the Direct3D game
2. You can see the game in 3-Dimensional way only on the graphic card supported by Wicked3D.
3. After the game start, press 'Stereo on (Default <Ctl + t>) Hotkey' to run the driver
4. If divided up&down picture show up on the monitor, press 'AnotherEYES' mode button to run the sync double mode.
5. To control the depth of stereoscopic image, use the Hotkey below

Default Wicked3D Hotkeys:

Toggle Stereo	<Ctl + T>	Less Stereo Separation	<Ctl + O>
Toggle Resolution Override	<Ctl + F>	More Stereo Separation	<Ctl + P>
Toggle Stereo and Resolution Override	<Alt + G>	Less Vertical Separation	<Ctl + U>
Reset Stereo	<Ctl + R>	More Vertical Separation	<Ctl + I>
Toggle Stereo Separation	<Ctl + S>	Stereo Crosshair Toggle	<Alt + C>

Section 4: Uses to AnotherWorld Software

1. VR Scape

VR Scape is a Web Brower Plug-in program supporting VRML.

VR Scape is a real time converting browser of VRML file format into stereoscopic image, so you can experience the virtual reality with it.

It is supported on Microsoft Internet Explorer and Netscape Navigator, and we recommend you to use 4.0 version or higher

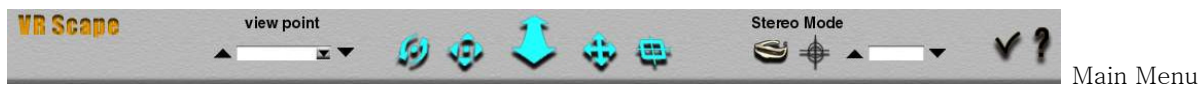
How to use

Because VR Scape is a Plug-in program, it only works after opening VRML file by using Web browser

Therefore, you should move to 3D gallery in the CD, then open the wrl file in each folder to operate VR Scape.

When you use VR Scape on the Internet Explorer, set low safety level at the system security option.

If a warning message is showed up, you can ignore it. Because it results from different environment of its computer. And it does not cause any problems with your computer.

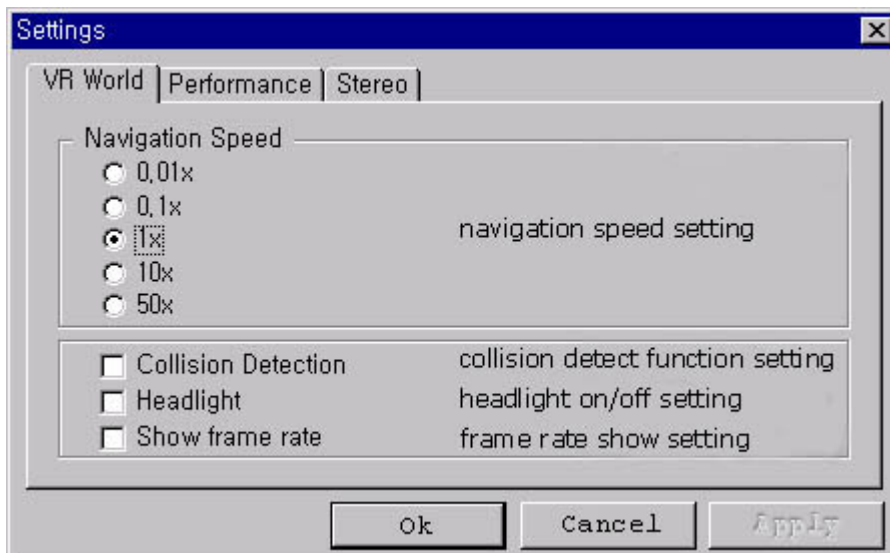


Examine Button		Spinning a stereoscopic VRML
Look Button		Moving left & right side
Walk Button		zoom in & out
Slide Button		Moving left & right side
Point Button		Moving toward a point you make
Viewpoint list		Choose a viewpoint you want
Set Stereo Button		Viewing a stereoscopic VRML
Depth Moderating Button		Moderating depth from a point you make
Setting Dialogs Button		Set the configuration
About Button		Brief review about this browser

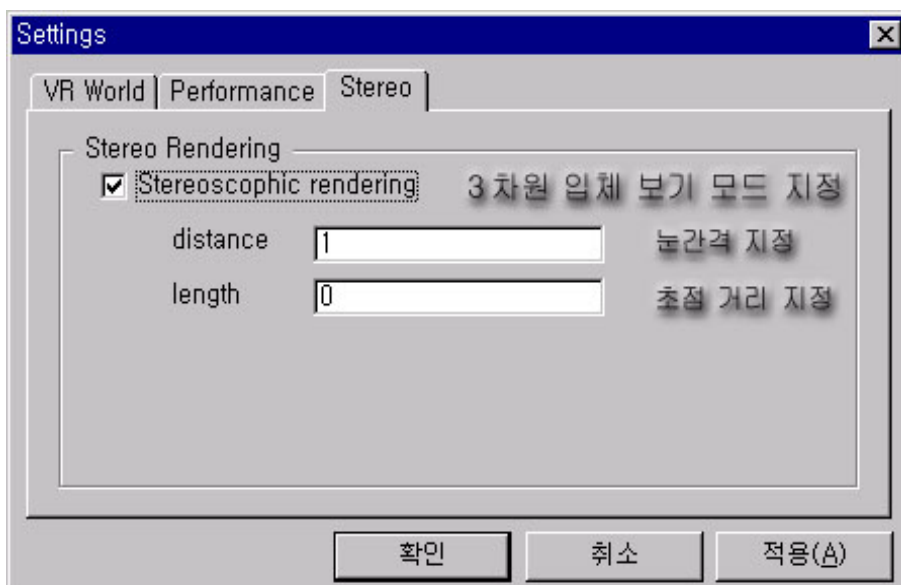
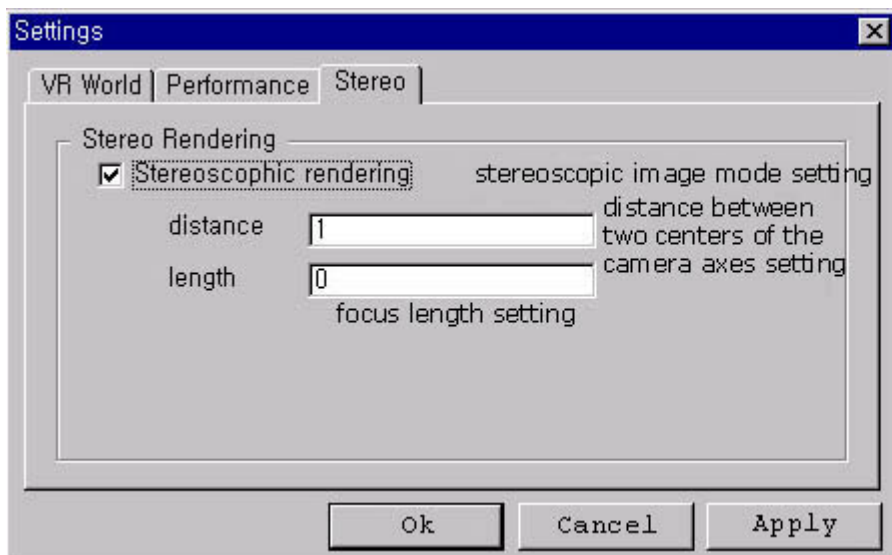
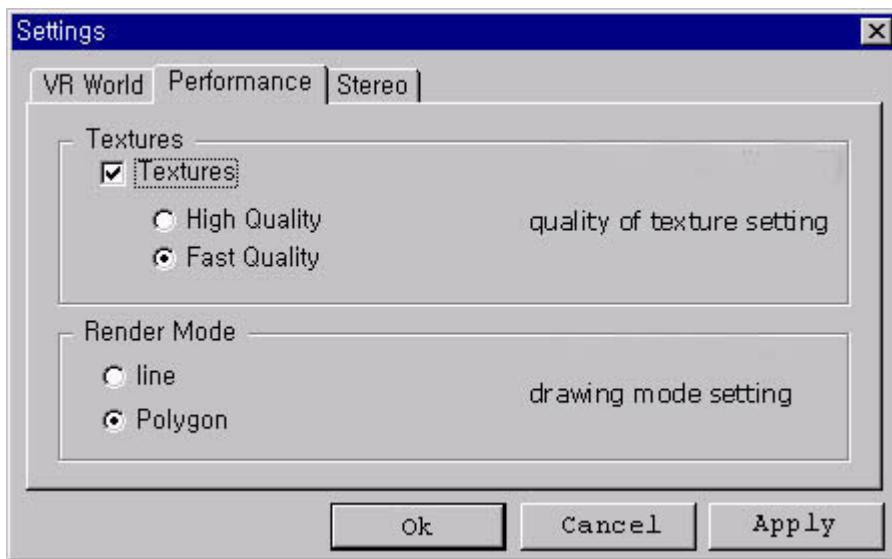
If you click the right mouse button, the following menu will be shown.

✓ Walk	movement for walking through the space
Examine	mode for examining and spinning the space
Slide	movement of viewpoint vertically
Look	movement for looking around the space
Point	movement of a picking object closer
✓ AutoNear	set autonear
Headlight	light on the object
Straighten	set viewpoint on the front
Settings	set browser environment
Prev	move viewpoint
Next	
Show dashboard	set user interface mode

after push setting button on above menu, you will see the following menu



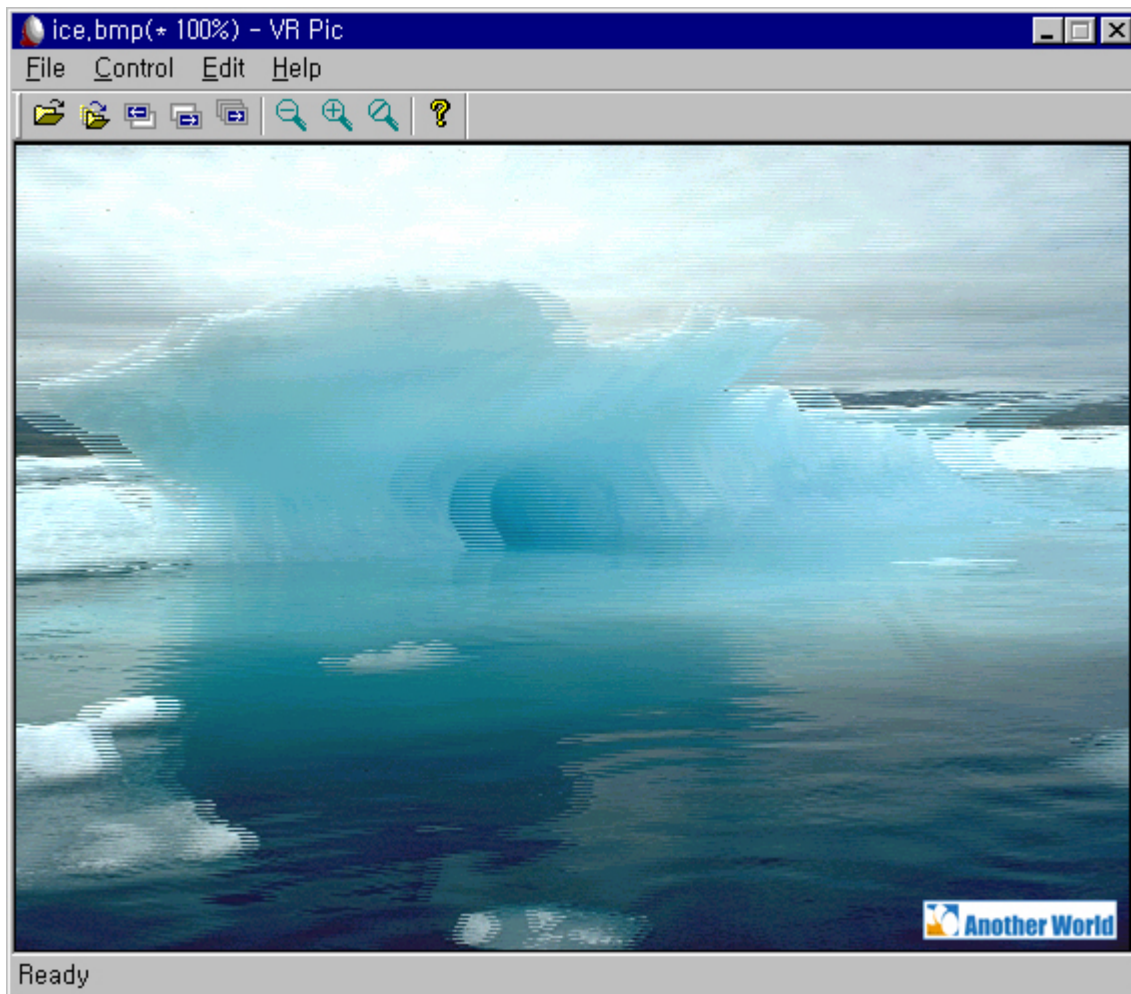
this menu has three tabs. One is upper menu and two is below.



2. VR Pic

VR Pic is the stereoscopic still image viewer specially designed for multimedia environment.

How to use











VR Pic can be classified into three main functions

First, basic function such as file open

Second, Slide function

Third, Zoom function

	Open one file
	Open multi files for slide show
	Previous image
	Next image
	Auto slide show

	Zoom out image
	Zoom in image
	Zoom actual size

3. VR Stream

VR Stream is the stereoscopic moving image viewer to work in multimedia environment

How to use



button for moving image file open



button for volume adjustment



button for replay



Play Stop Rewind Forward
Pause Home End

	Remaining time
Stopped	00:00 / 00:03 1x
Player status	Play time

4. Stereoshop

Stereoshop is a tool to make stereoscopic images.

How to use



About the file	Left-Open	Open Left Image
	Left-Close	Close Left Image
	Right-Open	Open Right Image
	Right-Close	Close Right Image
	Center-Image	Show the image which is merged right and left image
Moderating the place of image	Left-Vertical-Shift-Up	Move the left image to upward
	Left-Vertical-Shift-Zero	Move the left image to the first location
	Left-Vertical-Shift-Down	Move the left image to downward
	Right-Vertical-Shift-Up	Move the right image to upward
	Right-Vertical-Shift-Zero	Move the right image to the first location
	Right-Vertical-Shift-Down	Move the right image to downward
	Left-Horizontal-Shift-Left	Move the left image to the left

	Left-Horizontal-Shift-Zero	Move the left image to the first location
	Left-Horizontal-Right	Move the left image to the right
	Right-Horizontal-Shift-Left	Move the right image to the left
	Right-Horizontal-Shift-Zero	Move the right image to the first location
	Right-Horizontal-Right	Move the right image to the right
Moderating color and size of the image	R,G,B Adjust	Add or reduce the degree of RGB
	Contrast, Brightness Adjust	Add or reduce contrast and brightness of the image
	Crop	Cut the image you want
	Undo	Back to the first image
Set stereo mode	Select Interlace Mode	Select interlace mode
	Select Anaglyph Mode	Select Anaglyph Mode
	Select Cross, Parallel Eye	Select Cross, Parallel Eye
About the program	Save	Save the merged image
	Cancel	Initializing all the set default
	Exit	End the stereoshop

* To make a stereoscopic image, two images(left and right images) of an object or an landscape must be needed