

## **CERTIFICATE OF COMPLIANCE** **SAR EVALUATION**

### **Test Lab:**

**CELLTECH RESEARCH INC.**  
Testing and Engineering Lab  
1955 Moss Court  
Kelowna, B.C.  
Canada V1Y 9L3  
Phone: 250 - 860-3130  
Fax: 250 - 860-3110  
Toll Free: 1-877-545-6287  
e-mail: info@celltechlabs.com  
web site: www.celltechlabs.com

### **Applicant Information:**

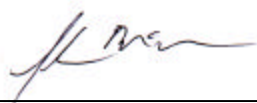
**TRISQUARE COMMUNICATIONS INC.**  
1420 NW Vivion Rd., Suite 113  
Kansas City, MO 64118  
Contact: Mr. Barry Vonada

<b>FCC ID:</b>	<b>O9GGMRS480</b>
<b>Model(s):</b>	<b>Uniden GMRS 480</b>
<b>DUT Type:</b>	<b>Portable GMRS PTT Radio Transceiver (with optional 6V Nominal NiMH Battery Pack)</b>
<b>IC Classification:</b>	<b>Low Power License-Exempt Radio Communication Device</b>
<b>Modulation:</b>	<b>FM</b>
<b>Tx Frequency Range:</b>	<b>462.5500 - 462.7250 MHz</b>
<b>Max. Power Tested:</b>	<b>33.0 dBm (Conducted) @ 6.2V loaded</b>
<b>No. of Channels:</b>	<b>15</b>
<b>IC Rule Part(s):</b>	<b>RSS-102 Issue 1</b>

This wireless portable device has been shown to be compliant for localized Specific Absorption Rate (SAR) for uncontrolled environment / general exposure limits specified in ANSI/IEEE Std. C95.1-1992 and has been tested in accordance with the measurement procedures specified in ANSI/IEEE Std. C95.3-1999.

I attest to the accuracy of data. All measurements were performed by me or were made under my supervision and are correct to the best of my knowledge and belief. I assume full responsibility for the completeness of these measurements and vouch for the qualifications of all persons taking them.

Celltech Research Inc. certifies that no party to this application has been denied FCC benefits pursuant to Section 5301 of the Anti-Drug Abuse Act of 1988, 21 U.S.C. 853(a).



**Shawn McMillen**  
**General Manager**  
**Celltech Research Inc.**



## **TABLE OF CONTENTS**

1.0	<b>INTRODUCTION.....</b>	<b>1</b>
2.0	<b>DESCRIPTION OF DUT.....</b>	<b>1</b>
3.0	<b>SAR MEASUREMENT SYSTEM .....</b>	<b>2</b>
4.0	<b>MEASUREMENT SUMMARY.....</b>	<b>3-4</b>
5.0	<b>DETAILS OF SAR EVALUATION.....</b>	<b>5</b>
6.0	<b>EVALUATION PROCEDURES.....</b>	<b>5</b>
7.0	<b>SAR LIMITS.....</b>	<b>6</b>
8.0	<b>SYSTEM VALIDATION.....</b>	<b>6</b>
9.0	<b>SIMULATED EQUIVALENT TISSUES.....</b>	<b>7</b>
10.0	<b>TISSUE PARAMETERS.....</b>	<b>7</b>
11.0	<b>SYSTEM SPECIFICATIONS.....</b>	<b>8</b>
12.0	<b>TEST EQUIPMENT LIST.....</b>	<b>9</b>
13.0	<b>MEASUREMENT UNCERTAINTIES.....</b>	<b>10</b>
14.0	<b>REFERENCES.....</b>	<b>11</b>
	<b>APPENDIX A - SAR MEASUREMENT DATA.....</b>	<b>12</b>
	<b>APPENDIX B - DIPOLE VALIDATION.....</b>	<b>13</b>
	<b>APPENDIX C - PROBE CALIBRATION.....</b>	<b>14</b>
	<b>APPENDIX D - SAR TEST SETUP PHOTOGRAPHS.....</b>	<b>15</b>

## 1.0 INTRODUCTION

This measurement report shows that the TRISQUARE COMMUNICATIONS INC. Model: Uniden GMRS 480 Portable GMRS PTT Radio Transceiver with 6V Nominal NiMH Battery Pack complies with the regulations and procedures specified in RSS-102 Issue 1 of Industry Canada for mobile and portable devices. The test procedures, as described in American National Standards Institute C95.1-1992 (1), FCC OET Bulletin 65-1997 were employed. A description of the product and operating configuration, detailed summary of the test results, methodology and procedures used in the evaluation, equipment used, and the various provisions of the rules are included within this test report.

## 2.0 DESCRIPTION of Device Under Test (DUT)

Rule Part(s)	IC RSS-102 Issue 1	Modulation	FM
		No. of Channels	15
DUT Type	Portable GMRS PTT Radio Transceiver	Tx Frequency Range (MHz)	462.5500 - 462.7250
FCC ID	O9GGMRS480	Max. RF Output Power Tested	33.0 dBm (Conducted) @ 6.2V loaded
Model No.(s)	Uniden GMRS 480	Antenna Type	Whip
Serial No.	Pre-production	Power Supply	6V Nominal NiMH Battery Pack



Front of DUT



Left Side of DUT



Right Side of DUT



Back of DUT

### ***3.0 SAR MEASUREMENT SYSTEM***

Celltech Research SAR measurement facility utilizes the Dosimetric Assessment System (DASY™) manufactured by Schmid & Partner Engineering AG (SPEAG™) of Zurich, Switzerland. The DASY system is comprised of the robot controller, computer, near-field probe, probe alignment sensor, and the generic twin phantom containing brain or muscle equivalent material. The robot is a six-axis industrial robot performing precise movements to position the probe to the location (points) of maximum electromagnetic field (EMF). A cell controller system contains the power supply, robot controller, teach pendant (Joystick), and remote control, is used to drive the robot motors. The Staubli robot is connected to the cell controller to allow software manipulation of the robot. A data acquisition electronic (DAE) circuit performs the signal amplification, signal multiplexing, AD-conversion, offset measurements, mechanical surface detection, collision detection, etc. is connected to the Electro-optical coupler (EOC). The EOC performs the conversion from the optical into digital electric signal of the DAE and transfers data to the PC plug-in card. The DAE3 utilizes a highly sensitive electrometer-grade preamplifier with auto-zeroing, a channel and gain-switching multiplexer, a fast 16 bit AD-converter and a command decoder and control logic unit. Transmission to the PC-card is accomplished through an optical downlink for data and status information and an optical uplink for commands and clock lines. The mechanical probe-mounting device includes two different sensor systems for frontal and sidewise probe contacts. They are also used for mechanical surface detection and probe collision detection. The robot uses its own controller with a built in VME-bus computer.



*DASY3 SAR Measurement System*

#### 4.0 MEASUREMENT SUMMARY

The measurement results were obtained with the DUT tested in the conditions described in this report. Detailed measurement data and plots showing the maximum SAR location of the DUT are reported in Appendix A.

##### Face-Held SAR Measurements

Frequency (MHz)	Channel	Mode	Conducted Power Tested (dBm)	Antenna Position	Separation Distance (cm)	SAR (w/kg)	
						100% Duty Cycle	50% Duty Cycle
462.5500	Low	Unmod.	33.0	Fixed	4.0	0.734	0.367
462.7250	High	Unmod.	33.0	Fixed	4.0	0.738	0.369
Mixture Type: Brain Dielectric Constant: 48.9 Conductivity: 0.61			ANSI / IEEE C95.1 1992 - SAFETY LIMIT Spatial Peak Uncontrolled Exposure/General Population BRAIN: 1.6 W/kg (averaged over 1 gram)				

Notes:

1. The SAR values found were below the maximum limit of 1.6 w/kg.
2. The highest face-held SAR value found was 0.369 w/kg (50% duty cycle).
3. The DUT was tested with a 6V nominal NiMH battery pack.
4. The DUT was tested for face-held SAR with a 4.0 cm spacing between the front of the DUT and the outer surface of the planar phantom.



*Face SAR with 4.0cm spacing*

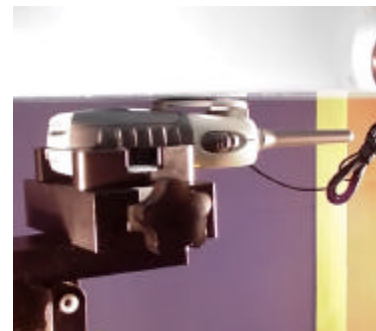
## ***MEASUREMENT SUMMARY (CONT.)***

### **Body-Worn SAR Measurements**

Frequency (MHz)	Channel	Mode	Conducted Power Tested (dBm)	Antenna Position	Belt-Clip Separation Distance (cm)	SAR (w/kg)	
						100% Duty Cycle	50% Duty Cycle
462.5500	Low	Unmod.	33.0	Fixed	1.0	1.88	0.940
462.7250	High	Unmod.	33.0	Fixed	1.0	1.91	0.955
Mixture Type: Muscle Dielectric Constant: 57.5 Conductivity: 0.84			ANSI / IEEE C95.1 1992 - SAFETY LIMIT Spatial Peak Uncontrolled Exposure/General Population BODY: 1.6 W/kg (averaged over 1 gram)				

#### Notes:

1. The SAR values found were below the maximum limit of 1.6 w/kg.
2. The highest body-worn SAR value found was 0.955 w/kg (50% duty cycle).
3. The DUT was tested with a 6V nominal NiMH battery pack.
4. The DUT was tested for body SAR with the supplied belt-clip providing a 1.0cm separation distance between the back of the DUT and the outer surface of the planar phantom.



*Body SAR with 1.0cm Belt-Clip*



## **5.0 DETAILS OF SAR EVALUATION**

The TRISQUARE COMMUNICATIONS INC. Model: Uniden GMRS 480 Portable GMRS PTT Radio Transceiver with 6V Nominal NiMH Battery Pack was found to be compliant for localized Specific Absorption Rate (SAR) based on the following test provisions and conditions:

- 1) The DUT was tested in a face-held configuration with the device placed parallel to and at a nominal distance of 40mm from the outer surface of the planar phantom.
- 2) The DUT was tested in a body-worn configuration placed parallel to the outer surface of the planar phantom, and the attached belt-clip providing a 1.0cm separation distance between the back of the DUT from the outer surface of the planar phantom.
- 3) The DUT was evaluated for SAR at maximum power and the unit was operated for an appropriate period prior to the evaluation in order to minimize drift. The conducted power level was checked before and after each test.
- 4) The device was keyed to operate continuously in the transmit mode for the duration of the test.
- 5) The location of the maximum spatial SAR distribution (Hot Spot) was determined relative to the device. This location was then related to a phantom that possesses human like facial attributes. For this particular device the hot spot occurred in the LCD area, which relates to the nose area on the phantom.
- 6) The DUT was tested with a fully-charged 6V nominal NiMH battery pack.

## **6.0 EVALUATION PROCEDURES**

The Specific Absorption Rate (SAR) evaluation was performed in the following manner:

- a. (i) The evaluation was performed in an applicable area of the phantom depending on the type of device being tested. For devices held to the ear during normal operation, both the left and right ear positions were evaluated at the center frequency of the band at maximum power. The ear position that produced the greatest SAR determined which side of the phantom would be used for the entire evaluation. FCC OET Bulletin 65 Supplement C dictated the test position of the device relative to the phantom.  
(ii) For face-held and body-worn devices, or devices which can be operated within 20cm of the body, the planar section of the phantom was used.
- b. The SAR was determined by a pre-defined procedure within the DASY3 software. Upon completion of a reference and optical surface check, the exposed region of the phantom was scanned near the inner surface with a grid spacing of 20mm x 20mm.
- c. For frequencies below 500MHz a 4x4x7 matrix was performed around the greatest spatial SAR distribution found during the area scan of the applicable exposed region. For frequencies above 500MHz a 5x5x7 matrix was performed. SAR values were then calculated using a 3-D spline interpolation algorithm and averaged over spatial volumes of 1 and 10 grams.
- d. If the DUT had any appreciable drift over the course of the evaluation, then the DUT was re-evaluated. Any unusual anomalies over the course of the test also warranted a re-evaluation.

## 7.0 SAR SAFETY LIMITS

<b>EXPOSURE LIMITS</b> (General Population / Uncontrolled Exposure Environment)	<b>SAR</b> (W/Kg)
Spatial Average (averaged over the whole body)	0.08
Spatial Peak (averaged over any 1g of tissue)	1.60
Spatial Peak (hands/wrists/feet/ankles averaged over 10g)	4.00

- Notes: 1. The SAR safety limits specified in the table above apply to devices operated in the General Population / Uncontrolled Exposure environment.
2. Uncontrolled environments are defined as locations where there is exposure of individuals who have no knowledge or control of their exposure.

## 8.0 SYSTEM VALIDATION

Prior to the assessment, the system was verified in the planar region of the phantom. For devices operating below 1GHz, an 835MHz dipole or 900MHz was used, depending on the operating frequency of the DUT. For devices operating above 1GHz, an 1800MHz dipole was used. A forward power of 250mW was applied to the dipole and system was verified to a tolerance of  $\pm 3\%$ . Following the validation, the fluid remained or was changed depending on the particular part of the body being evaluated. The applicable verification is as follows (see Appendix B for validation test plot):

<b>Dipole Validation Kit</b>	<b>Target SAR 1g (w/kg)</b>	<b>Measured SAR 1g (w/kg)</b>
D835V2	2.06	2.04



## 9.0 SIMULATED TISSUES

The brain and muscle mixtures consist of a viscous gel using hydroxethylcellulose (HEC) gelling agent and saline solution. Preservation with a bactericide is added and visual inspection is made to ensure air bubbles are not trapped during the mixing process. The fluid was prepared in accordance with standardized procedures, and measured for dielectric parameters (permittivity and conductivity).

INGREDIENT	MIXTURE		
	835MHz Brain % (Validation)	450MHz Brain %	450MHz Muscle %
Water	40.1	42.0	50.0
Sugar	58.1	56.0	48.2
Salt	0.7	1.7	1.6
HEC	1.0	0.1	0.1
Bactericide	0.1	0.2	0.1

## 10.0 TISSUE PARAMETERS

The dielectric parameters of the fluids were verified prior to the SAR evaluation using an 85070C Dielectric Probe Kit and an 8753E Network Analyzer. The dielectric parameters of the fluid are as follows:

Equivalent Tissue (450MHz)	Dielectric Constant $\epsilon_r$	Conductivity $s$ (mho/m)	$\rho$ (Kg/m <sup>3</sup> )
Brain (835MHz Validation)	44.2 $\pm$ 5%	0.80 $\pm$ 10%	1000
Brain	48.9 $\pm$ 5%	0.61 $\pm$ 10%	1000
Muscle	57.5 $\pm$ 5%	0.84 $\pm$ 10%	1000

## ***11.0 ROBOT SYSTEM SPECIFICATIONS***

### **Specifications**

**POSITIONER:** Stäubli Unimation Corp. Robot Model: RX60L  
**Repeatability:** 0.02 mm  
**No. of axis:** 6

### **Data Acquisition Electronic (DAE) System**

#### **Cell Controller**

**Processor:** Pentium III  
**Clock Speed:** 450 MHz  
**Operating System:** Windows NT  
**Data Card:** DASY3 PC-Board

#### **Data Converter**

**Features:** Signal Amplifier, multiplexer, A/D converter, and control logic  
**Software:** DASY3 software  
**Connecting Lines:** Optical downlink for data and status info.  
Optical uplink for commands and clock

### **PC Interface Card**

**Function:** 24 bit (64 MHz) DSP for real time processing  
Link to DAE3  
16 bit A/D converter for surface detection system  
serial link to robot  
direct emergency stop output for robot

### **E-Field Probe**

**Model:** ET3DV6  
**Serial No.:** 1387  
**Construction:** Triangular core fiber optic detection system  
**Frequency:** 10 MHz to 6 GHz  
**Linearity:**  $\pm 0.2$  dB (30 MHz to 3 GHz)

### **Phantom**

**Phantom:** Generic Twin  
**Shell Material:** Fiberglass  
**Thickness:** 2.0  $\pm$  0.1 mm

## 12.0 TEST EQUIPMENT LIST

SAR MEASUREMENT SYSTEM		
<u>EQUIPMENT</u>	<u>SERIAL NO.</u>	<u>CALIBRATION DATE</u>
<b>DASY3 System</b> -Robot -ET3DV6 E-Field Probe -DAE -835MHz Validation Dipole -900MHz Validation Dipole -1800MHz Validation Dipole -Generic Twin Phantom V3.0	599396-01 1387 383 411 054 247 N/A	N/A Sept 1999 Sept 1999 Aug 1999 Aug 1999 Aug 1999 N/A
<b>85070C Dielectric Probe Kit</b>	N/A	N/A
<b>Gigatronics 8652A Power Meter</b> -Power Sensor 80701A -Power Sensor 80701A	1835272 1833535 1833542	Oct 1999 Oct 1999 Oct 1999
<b>E4408B Spectrum Analyzer</b>	US39240170	Nov 1999
<b>8594E Spectrum Analyzer</b>	3543A02721	Mar 2000
<b>8753E Network Analyzer</b>	US38433013	Nov 1999
<b>8648D Signal Generator</b>	3847A00611	N/A
<b>5S1G4 Amplifier Research Power Amplifier</b>	26235	N/A

### 13.0 MEASUREMENT UNCERTAINTIES

Uncertainty Description	Error	Distribution	Weight	Standard Deviation	Offset
<b>Probe Uncertainty</b>					
Axial isotropy	$\pm 0.2$ dB	U-Shaped	0.5	$\pm 2.4$ %	
Spherical isotropy	$\pm 0.4$ dB	U-Shaped	0.5	$\pm 4.8$ %	
Isotropy from gradient	$\pm 0.5$ dB	U-Shaped	0	$\pm$	
Spatial resolution	$\pm 0.5$ %	Normal	1	$\pm 0.5$ %	
Linearity error	$\pm 0.2$ dB	Rectangle	1	$\pm 2.7$ %	
Calibration error	$\pm 3.3$ %	Normal	1	$\pm 3.3$ %	
<b>SAR Evaluation Uncertainty</b>					
Data acquisition error	$\pm 1$ %	Rectangle	1	$\pm 0.6$ %	
ELF and RF disturbances	$\pm 0.25$ %	Normal	1	$\pm 0.25$ %	
Conductivity assessment	$\pm 10$ %	Rectangle	1	$\pm 5.8$ %	
<b>Spatial Peak SAR Evaluation Uncertainty</b>					
Extrapolated boundary effect	$\pm 3$ %	Normal	1	$\pm 3$ %	$\pm 5$ %
Probe positioning error	$\pm 0.1$ mm	Normal	1	$\pm 1$ %	
Integrated and cube orientation	$\pm 3$ %	Normal	1	$\pm 3$ %	
Cube Shape inaccuracies	$\pm 2$ %	Rectangle	1	$\pm 1.2$ %	
Device positioning	$\pm 6$ %	Normal	1	$\pm 6$ %	
<b>Combined Uncertainties</b>				$\pm 11.7$ %	$\pm 5$ %

Measurement uncertainties in SAR measurements are difficult to quantify due to several variables including biological, physiological, and environmental. However, the estimated measurement uncertainties in SAR are less than 15-25 %.

According to ANSI/IEEE C95.3, the overall uncertainties are difficult to assess and will vary with the type of meter and usage situation. However, accuracy's of  $\pm 1$  to 3 dB can be expected in practice, with greater uncertainties in near-field situations and at higher frequencies (shorter wavelengths), or areas where large reflecting objects are present. Under optimum measurement conditions, SAR measurement uncertainties of at least  $\pm 2$  dB can be expected.

According to CENELEC, typical worst-case uncertainty of field measurements is  $\pm 5$  dB. For well-defined modulation characteristics the uncertainty can be reduced to  $\pm 3$  dB.

## **14.0 REFERENCES**

- (1) ANSI, *ANSI/IEEE C95.1: IEEE Standard for Safety Levels with Respect to Human Exposure to Radio Frequency Electromagnetic Fields, 3kHz to 300 Ghz*, The Institute of Electrical and Electronics Engineers, Inc., New York, NY 10017, 1992;
- (2) Federal Communications Commission, “Evaluating Compliance with FCC Guidelines for Human Exposure to Radio frequency Electromagnetic Fields”, OET Bulletin 65, FCC, Washington, D.C. 20554, 1997;
- (3) Thomas Schmid, Oliver Egger, and Neils Kuster, “Automated E-field scanning system for dosimetric assessments”, *IEEE Transaction on Microwave Theory and Techniques*, Vol. 44, pp. 105 – 113, January, 1996.
- (4) Niels Kuster, Ralph Kastle, and Thomas Schmid, “Dosimetric evaluation of mobile communications equipment with know precision”, *IEICE Transactions of Communications*, vol. E80-B, no. 5, pp. 645 – 652, May 1997.

***APPENDIX A - SAR MEASUREMENT DATA***

## Trisquare Communications Inc. FCC ID: O9GGMRS480

Generic Twin Phantom; Flat Section; Position: (90°,90°)

Probe: ET3DV6 - SN1387; ConvF(6.76,6.76,6.76); Crest factor: 1.0

450MHz Brain:  $\sigma = 0.61$  mho/m  $\epsilon_r = 48.9$   $\rho = 1.00$  g/cm<sup>3</sup>

Coarse: Dx = 20.0, Dy = 20.0, Dz = 10.0;

Cube 4x4x7

SAR (1g): 0.734 mW/g, SAR (10g): 0.563 mW/g

Face SAR at 4.0 cm Separation

With NiMH Battery

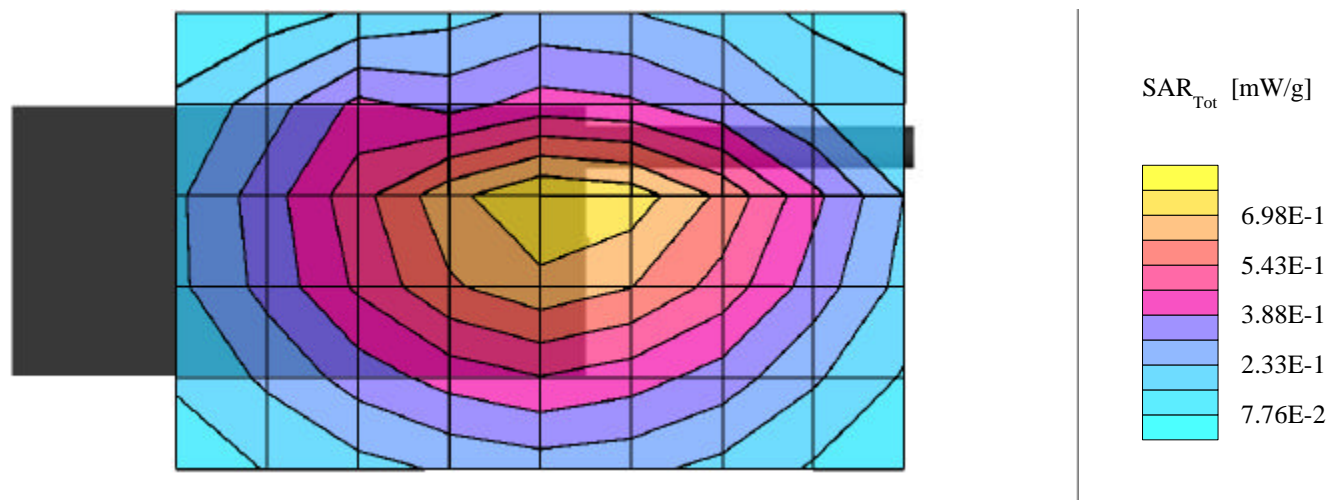
Uniden Model: GMRS 480

Unmodulated Carrier

Low Channel [462.5500 MHz]

Conducted Power 33.0 dBm

Date Tested: June 28, 2001





## Trisquare Communications Inc. FCC ID: O9GGMRS480

Generic Twin Phantom; Flat Section; Position: (90°,90°)

Probe: ET3DV6 - SN1387; ConvF(6.76,6.76,6.76); Crest factor: 1.0

450MHz Brain:  $\sigma = 0.61$  mho/m  $\epsilon_r = 48.9$   $\rho = 1.00$  g/cm<sup>3</sup>

Coarse: Dx = 20.0, Dy = 20.0, Dz = 10.0;

Cube 4x4x7

SAR (1g): 0.738 mW/g, SAR (10g): 0.565 mW/g

Face SAR at 4.0 cm Separation

With NiMH Battery

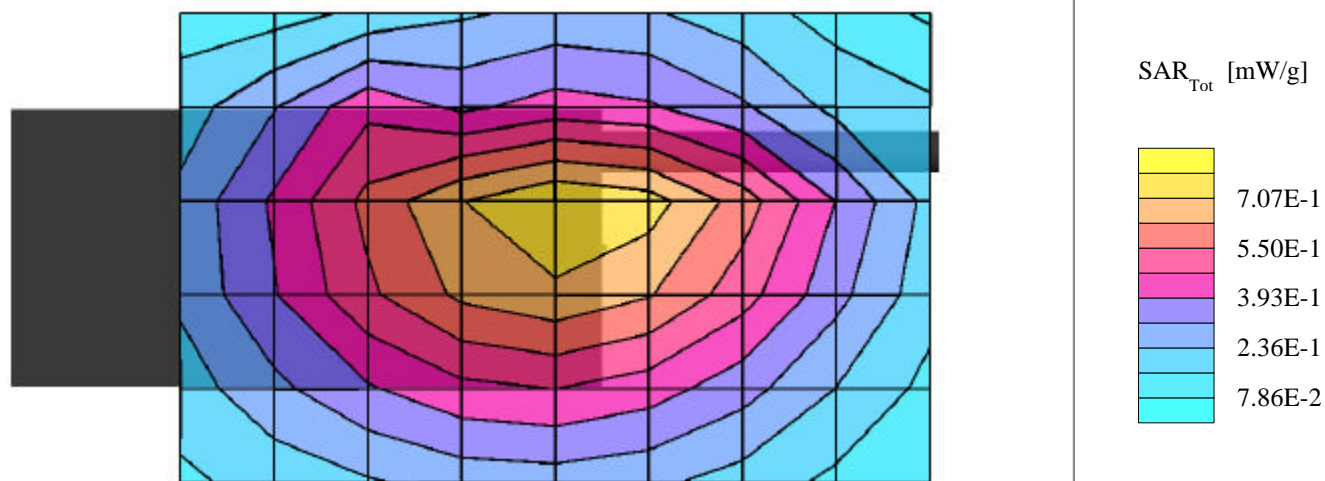
Uniden Model: GMRS 480

Unmodulated Carrier

High Channel [462.7250 MHz]

Conducted Power: 33.0 dBm

Date Tested: June 28, 2001



## Trisquare Communications Inc. FCC ID: O9GGMRS480

Generic Twin Phantom; Flat Section; Position: (270°,270°)

Probe: ET3DV6 - SN1387; ConvF(6.76,6.76,6.76); Crest factor: 1.0

450MHz Muscle:  $\sigma = 0.84$  mho/m  $\epsilon_r = 57.5$   $\rho = 1.00$  g/cm<sup>3</sup>

Coarse: Dx = 20.0, Dy = 20.0, Dz = 10.0;

Cube 4x4x7

SAR (1g): 1.88 mW/g, SAR (10g): 1.41 mW/g

Body-Worn SAR with 1.0 cm Belt-Clip

With NiMH Battery

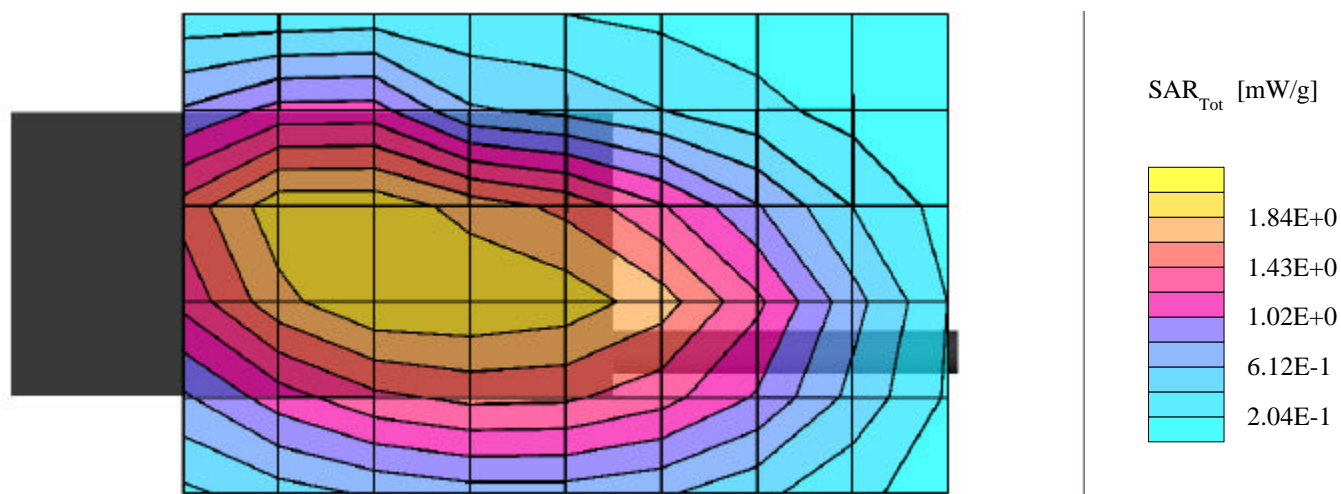
Uniden Model: GMRS 480

Unmodulated Carrier

Low Channel [462.5500 MHz]

Conducted Power: 33.0 dBm

Date Tested: June 28, 2001



## Trisquare Communications Inc. FCC ID: O9GGMRS480

Generic Twin Phantom; Flat Section; Position: (270°,270°)

Probe: ET3DV6 - SN1387; ConvF(6.76,6.76,6.76); Crest factor: 1.0

450MHz Muscle:  $\sigma = 0.84$  mho/m  $\epsilon_r = 57.5$   $\rho = 1.00$  g/cm<sup>3</sup>

Coarse: Dx = 20.0, Dy = 20.0, Dz = 10.0;

Cube 4x4x7

SAR (1g): 1.91 mW/g, SAR (10g): 1.38 mW/g

Body-Worn SAR with 1.0 cm Belt-Clip

With NiMH Battery

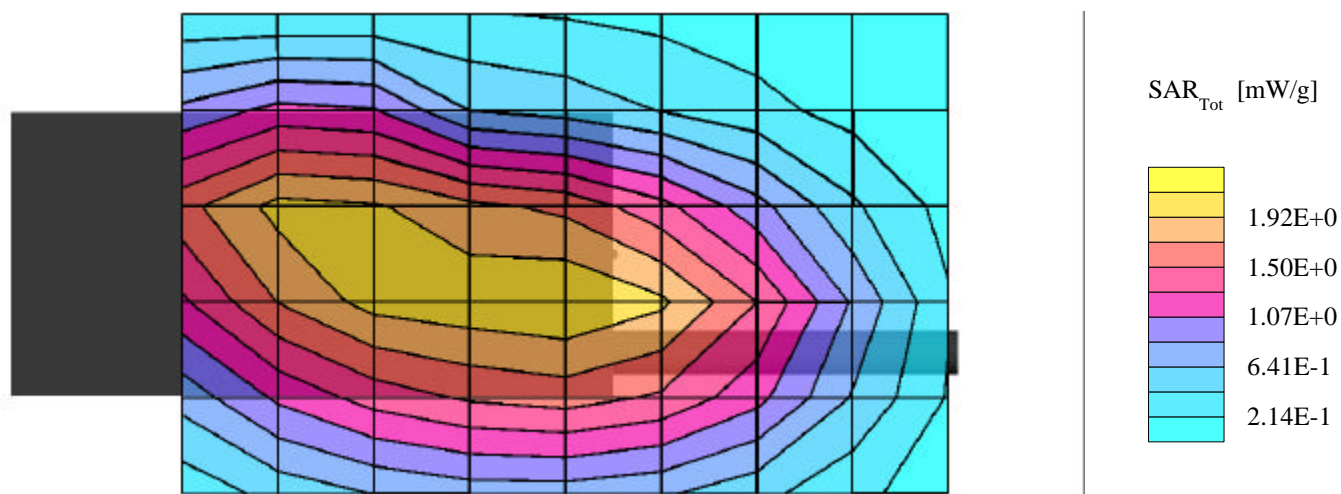
Uniden Model: GMRS 480

Unmodulated Carrier

High Channel [462.7250 MHz]

Conducted Power 33.0 dBm

Date Tested: June 28, 2001



## ***APPENDIX B - DIPOLE VALIDATION***

## Dipole 835 MHz

Generic Twin Phantom; Flat Section; Position: (90°,90°);  
Probe: ET3DV6 - SN1387; ConvF(6.43,6.43,6.43); Crest factor: 1.0;

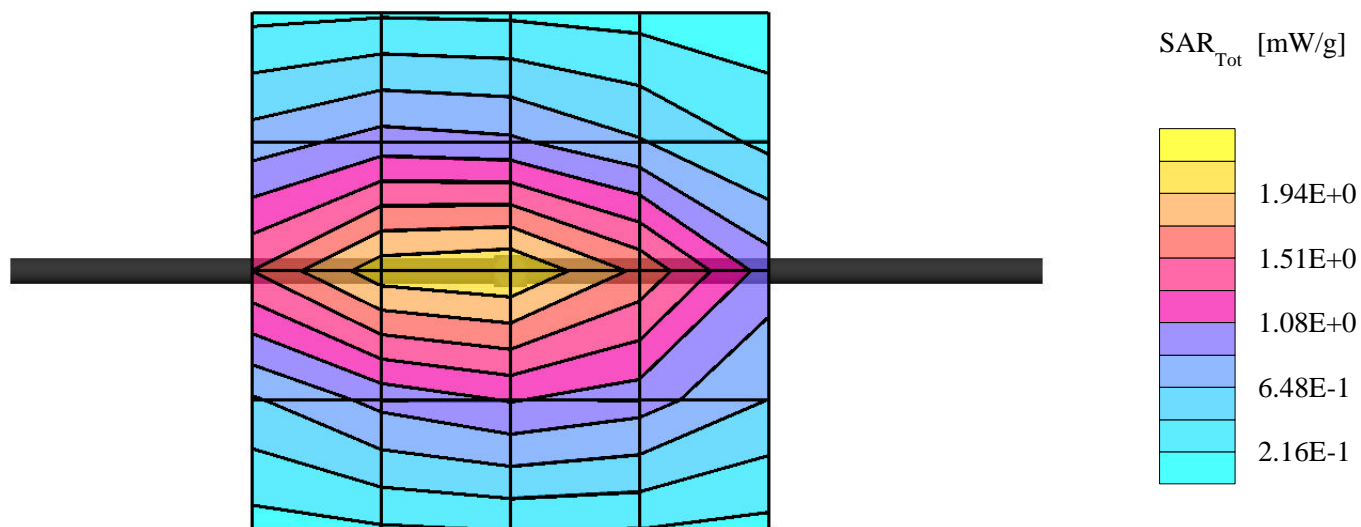
Brain 835 MHz:  $\sigma = 0.80$  mho/m  $\epsilon_r = 44.2$   $\rho = 1.00$  g/cm<sup>3</sup>

Coarse: Dx = 20.0, Dy = 20.0, Dz = 10.0

Cube 5x5x7

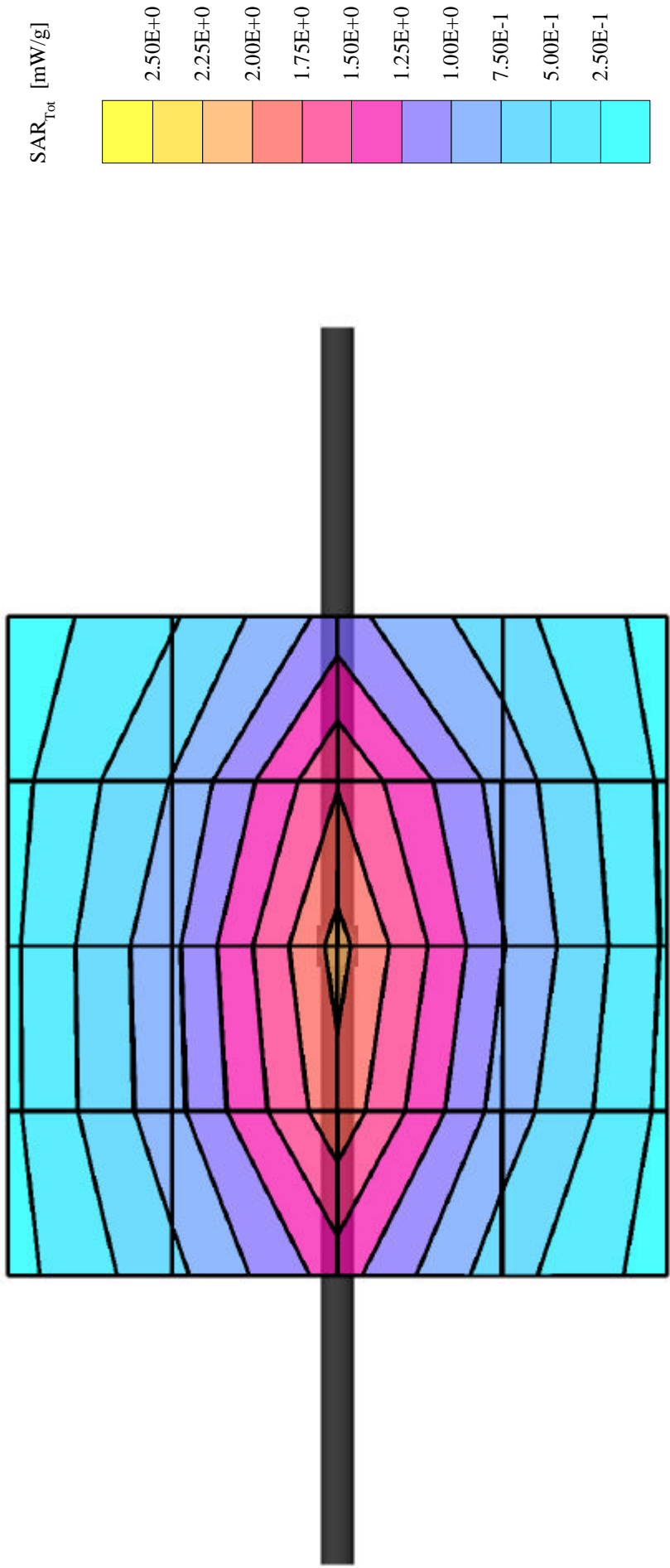
SAR (1g): 2.04 mW/g, SAR (10g): 1.35 mW/g

Validation Date: June 28, 2001



### Validation Dipole D835V2 SN:411, d = 15mm

Frequency: 835 MHz; Antenna Input Power: 250 [mW]  
Generic Twin Phantom; Flat Section; Grid Spacing: Dx = 20.0, Dy = 20.0, Dz = 10.0  
Probe: ET3DV5 - SN1342/DAE3; ConvF(5.75,5.75,5.75); Brain 835 MHz:  $\sigma = 0.80$  mho/m  $\epsilon_r = 44.2$   $\rho = 1.00$  g/cm<sup>3</sup>  
Cubes (2): Peak: 3.07 mW/g  $\pm 0.05$  dB, SAR (1g): 2.06 mW/g  $\pm 0.05$  dB, SAR (10g): 1.38 mW/g  $\pm 0.05$  dB, (Worst-case extrapolation)  
Penetration depth: 13.6 (12.7, 14.8) [mm]  
Powerdrift: -0.00 dB



## ***APPENDIX C - PROBE CALIBRATION***



# Probe ET3DV6

## SN:1387

Manufactured:	September 21, 1999
Last calibration:	September 22, 1999

Calibrated for System DASY3

## DASY3 - Parameters of Probe: ET3DV6 SN:1387

### Sensitivity in Free Space

NormX	<b>1.55</b> $\mu\text{V}/(\text{V}/\text{m})^2$
NormY	<b>1.65</b> $\mu\text{V}/(\text{V}/\text{m})^2$
NormZ	<b>1.64</b> $\mu\text{V}/(\text{V}/\text{m})^2$

### Diode Compression

DCP X	<b>98</b> mV
DCP Y	<b>98</b> mV
DCP Z	<b>98</b> mV

### Sensitivity in Tissue Simulating Liquid

**Brain**                      **450 MHz**                       $\epsilon_r = 48 \pm 5\%$                        $S = 0.50 \pm 10\%$  mho/m

ConvF X	<b>6.76</b> extrapolated	Boundary effect:	
ConvF Y	<b>6.76</b> extrapolated	Alpha	<b>0.30</b>
ConvF Z	<b>6.76</b> extrapolated	Depth	<b>2.52</b>

**Brain**                      **900 MHz**                       $\epsilon_r = 42.5 \pm 5\%$                        $S = 0.86 \pm 10\%$  mho/m

ConvF X	<b>6.34</b> $\pm 7\%$ (k=2)	Boundary effect:	
ConvF Y	<b>6.34</b> $\pm 7\%$ (k=2)	Alpha	<b>0.47</b>
ConvF Z	<b>6.34</b> $\pm 7\%$ (k=2)	Depth	<b>2.25</b>

**Brain**                      **1500 MHz**                       $\epsilon_r = 41 \pm 5\%$                        $S = 1.32 \pm 10\%$  mho/m

ConvF X	<b>5.78</b> interpolated	Boundary effect:	
ConvF Y	<b>5.78</b> interpolated	Alpha	<b>0.69</b>
ConvF Z	<b>5.78</b> interpolated	Depth	<b>1.88</b>

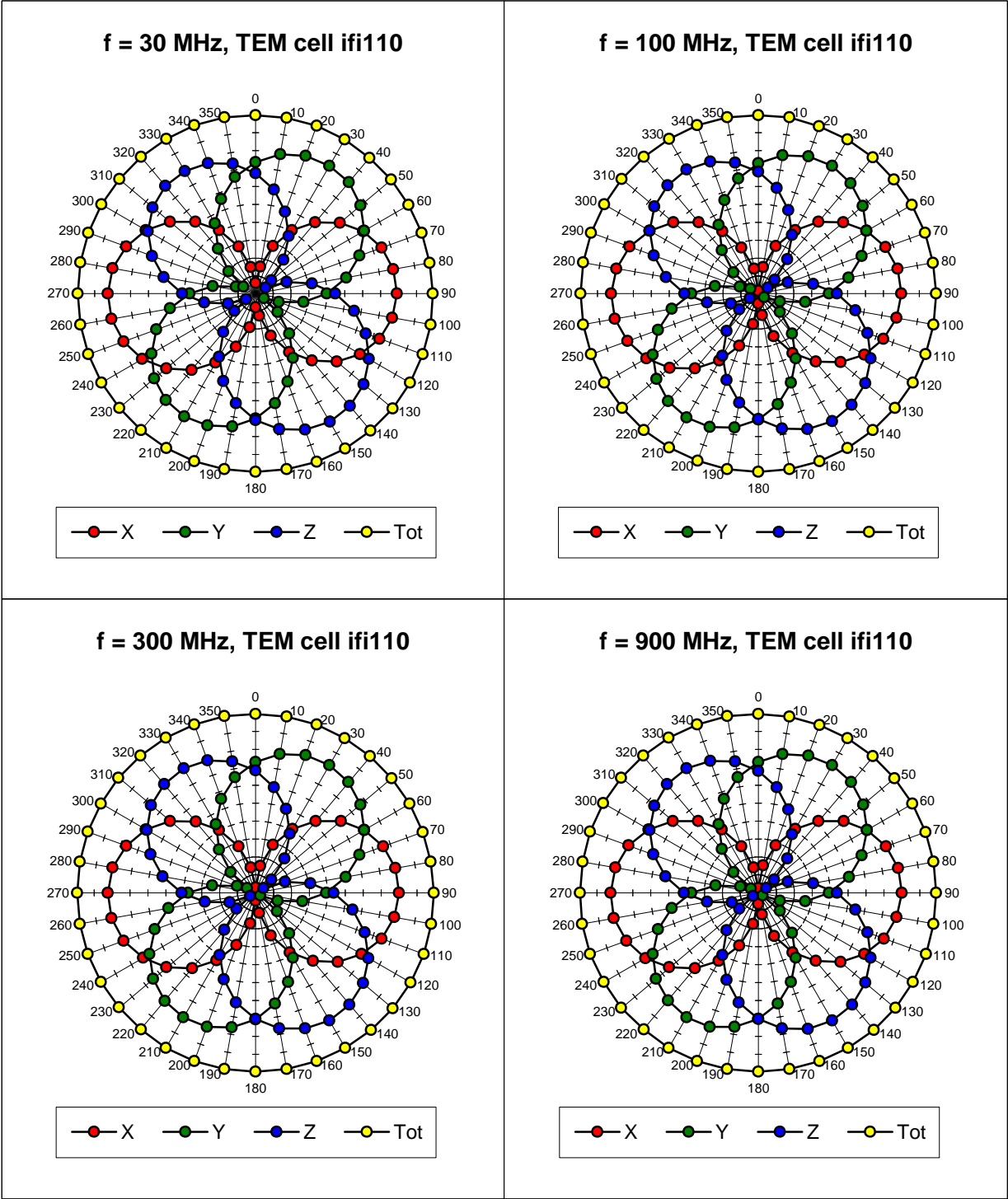
**Brain**                      **1800 MHz**                       $\epsilon_r = 41 \pm 5\%$                        $S = 1.69 \pm 10\%$  mho/m

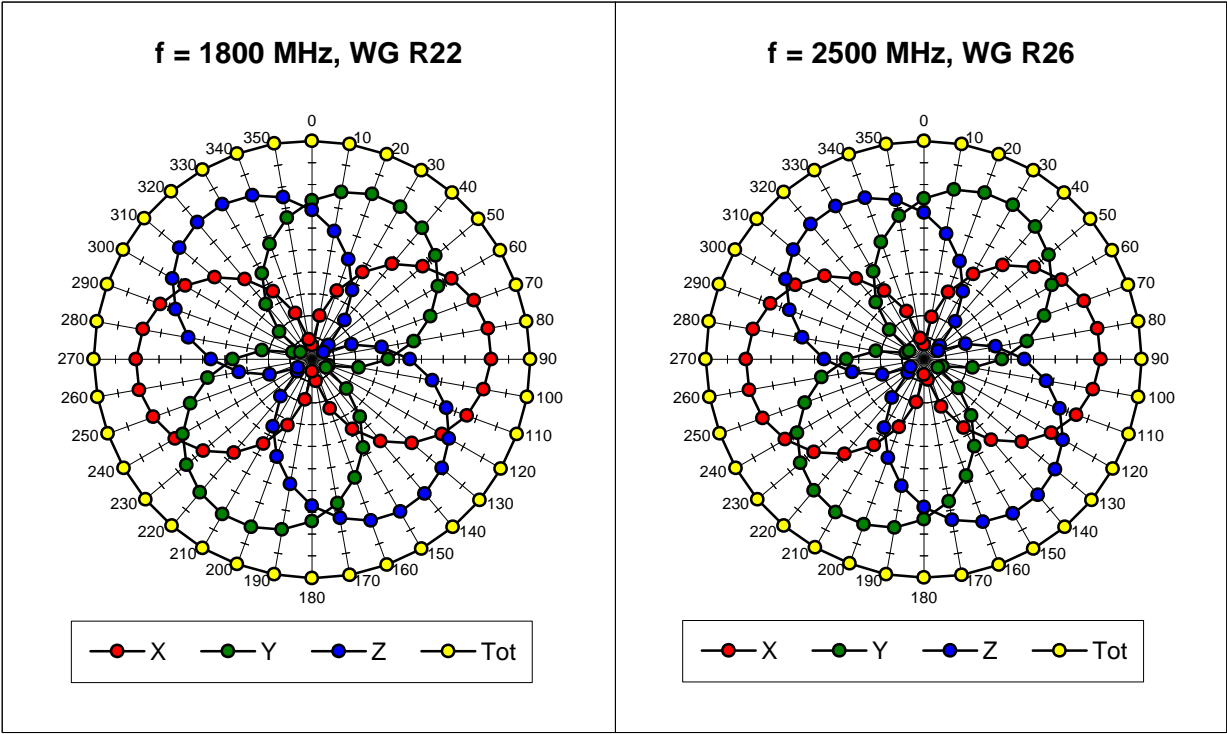
ConvF X	<b>5.50</b> $\pm 7\%$ (k=2)	Boundary effect:	
ConvF Y	<b>5.50</b> $\pm 7\%$ (k=2)	Alpha	<b>0.81</b>
ConvF Z	<b>5.50</b> $\pm 7\%$ (k=2)	Depth	<b>1.70</b>

### Sensor Offset

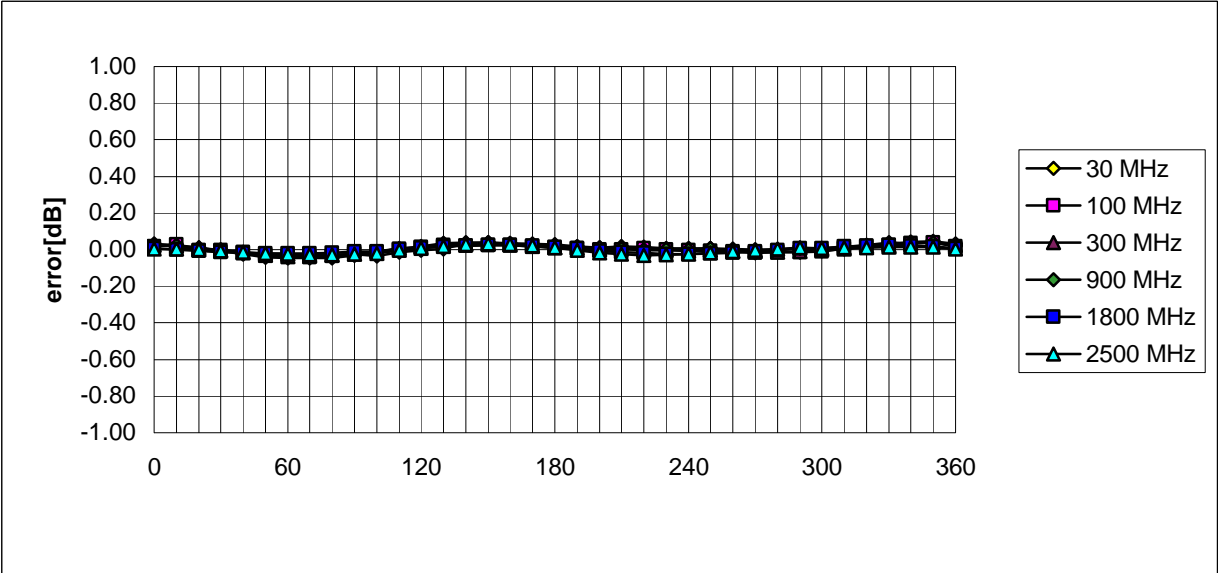
Probe Tip to Sensor Center	<b>2.7</b>	mm
Optical Surface Detection	<b>1.6 <math>\pm</math> 0.2</b>	mm

Receiving Pattern (f) , q = 0°

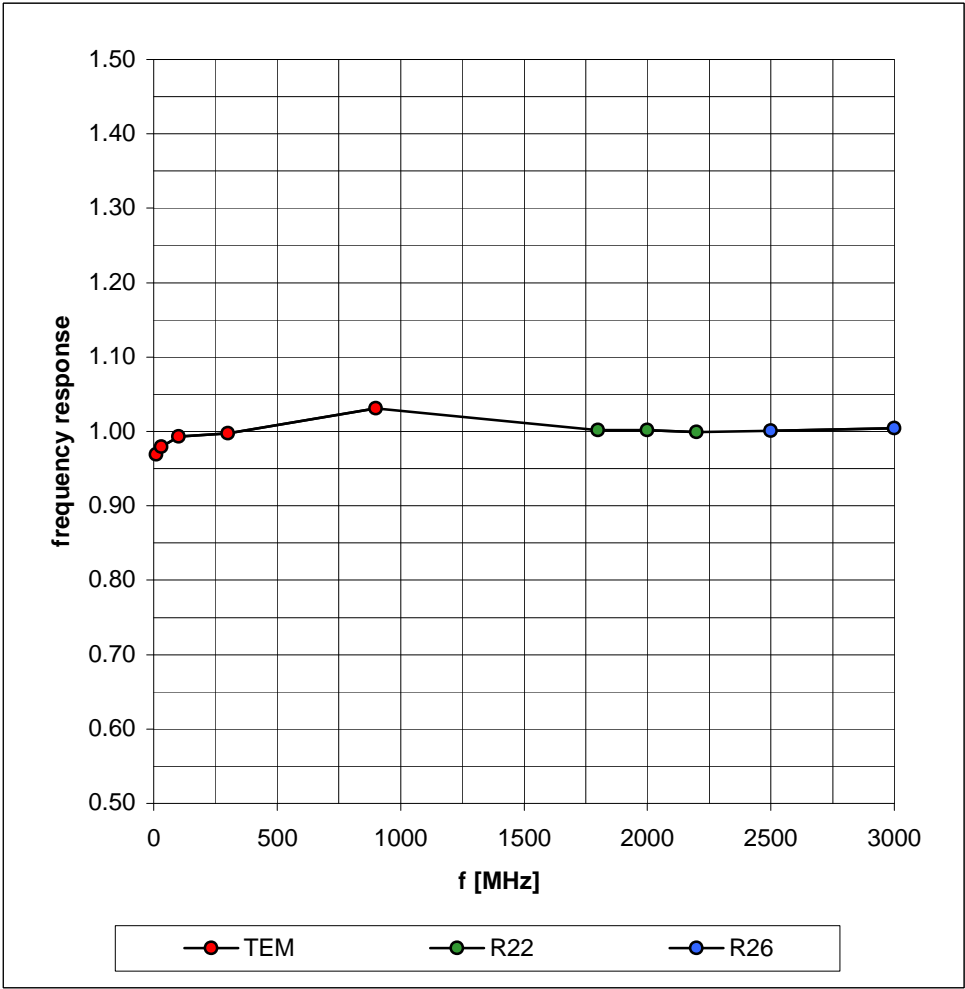




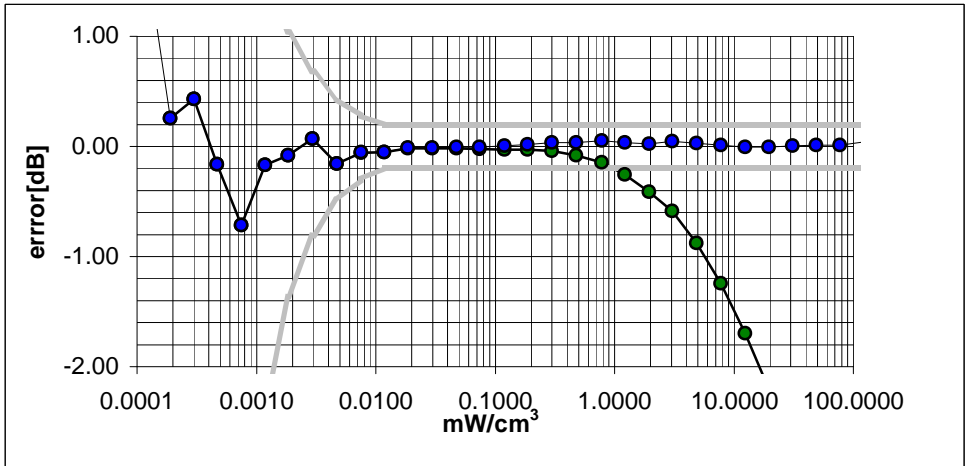
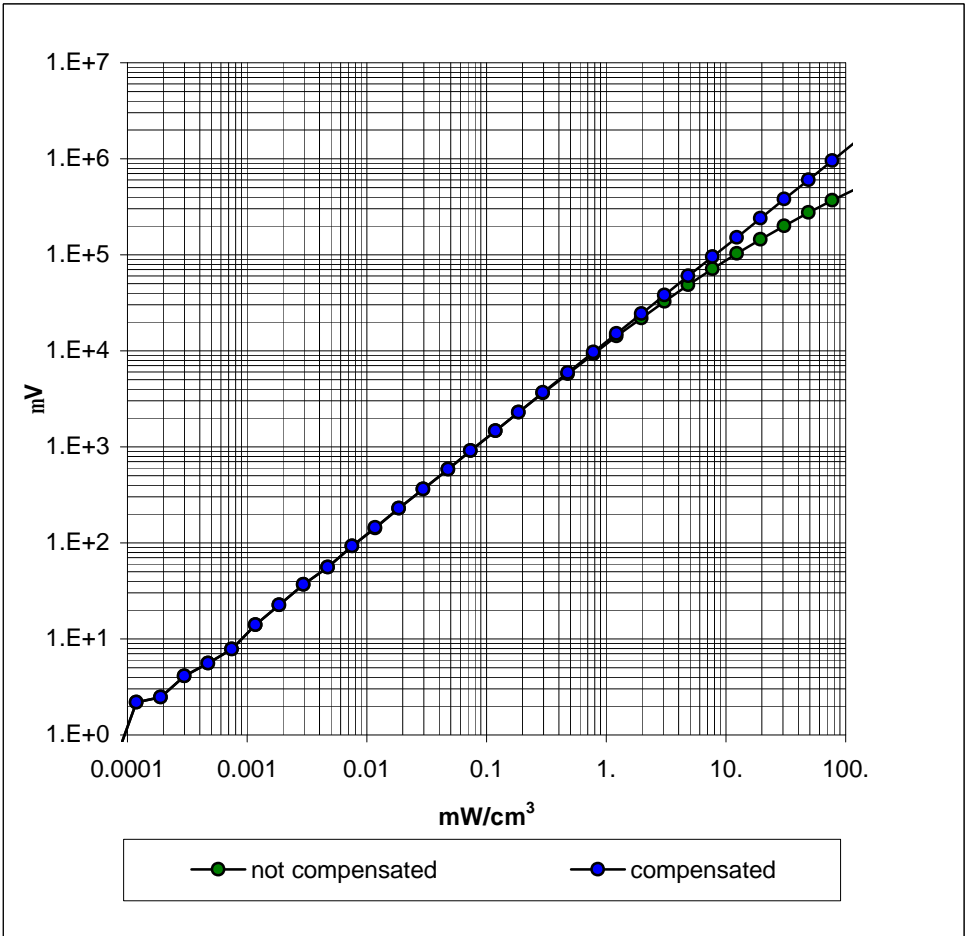
Isotropy Error (f), q = 0°



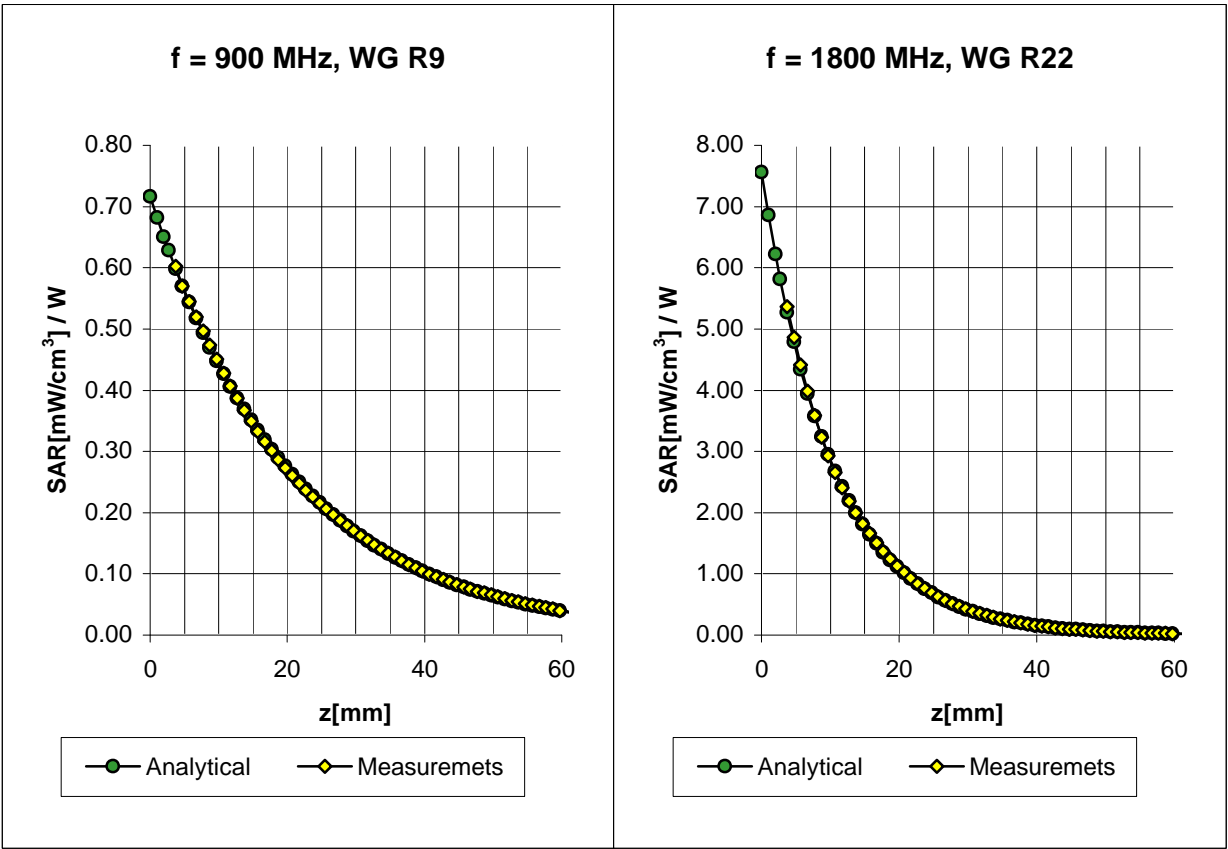
Frequency Response of E-Field  
( TEM-Cell:ifi110, Waveguide R22, R26 )



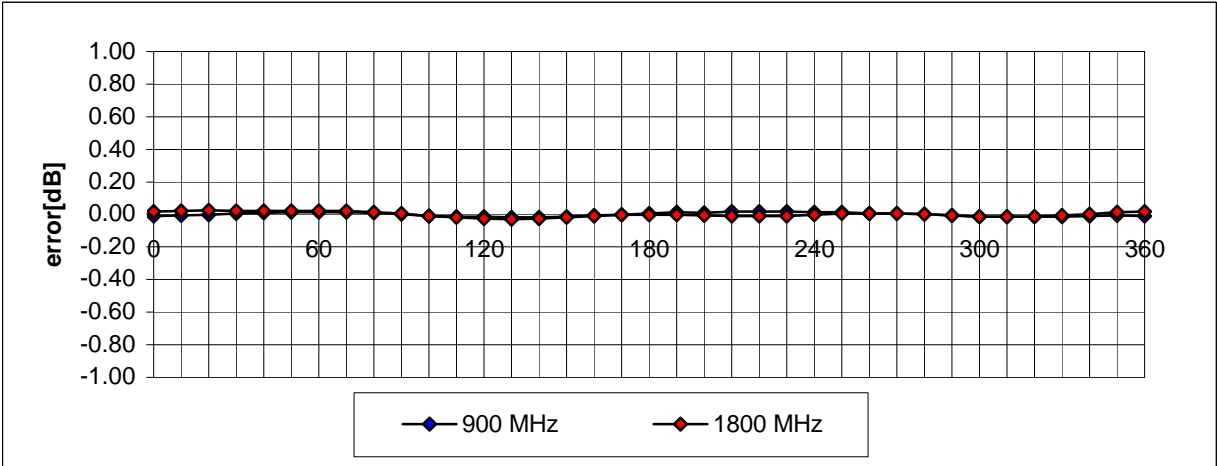
Dynamic Range f(SAR<sub>brain</sub>)  
( TEM-Cell:ifi110 )



# Conversion Factor Assessment



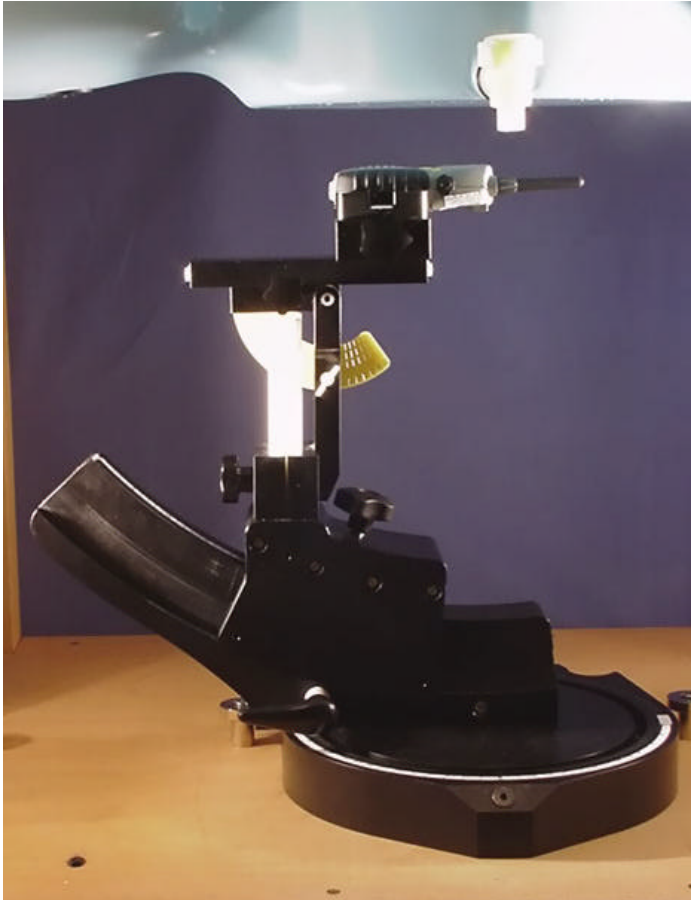
## Receiving Pattern (f) ( in brain tissue, z = 5 mm )





***APPENDIX D - SAR TEST SETUP PHOTOGRAPHS***

**FACE-HELD SAR TEST SETUP PHOTOGRAPHS**  
**4.0cm Separation Distance**  
**with 6V Nominal NiMH Battery Pack**



**BODY-WORN SAR TEST SETUP PHOTOGRAPHS  
with 1.0cm Belt-Clip & 6V Nominal NiMH Battery Pack**

