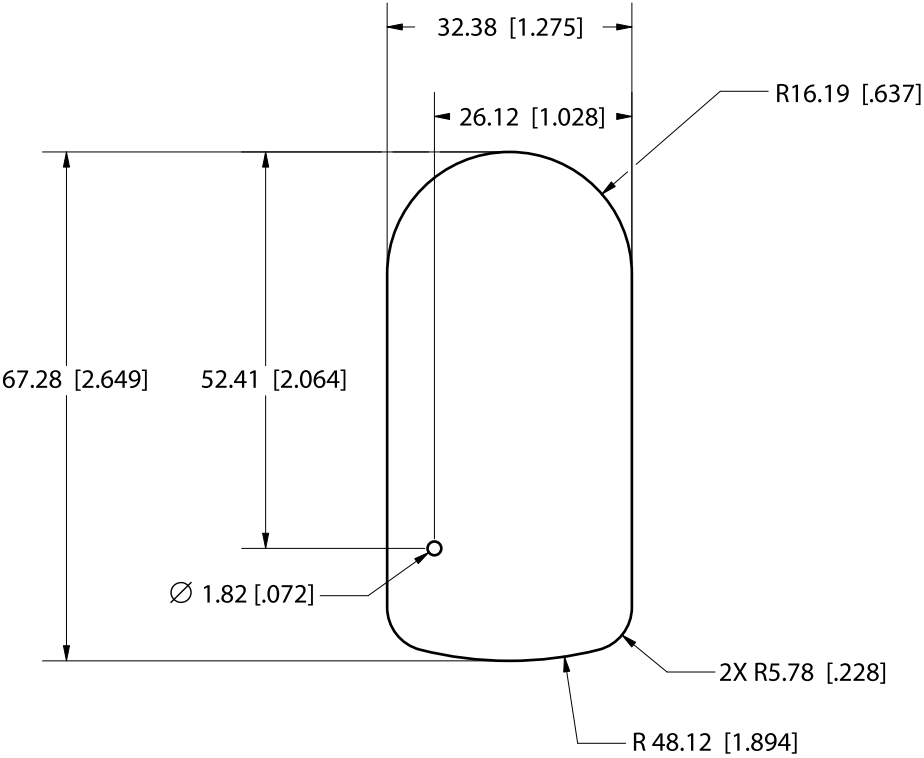
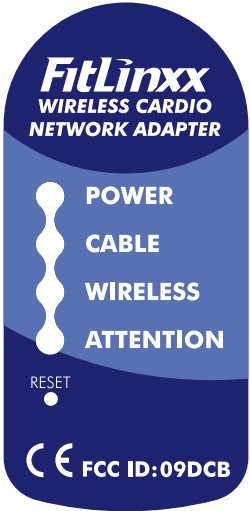


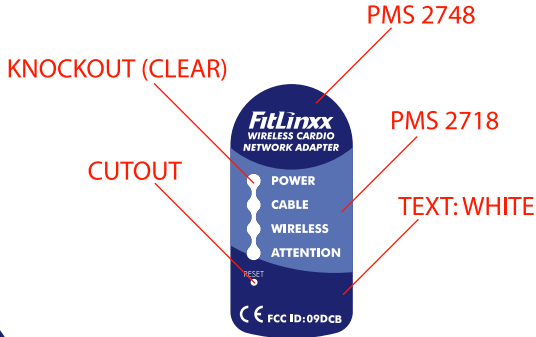
REV	CHANGED BY	DATE	DESCRIPTION



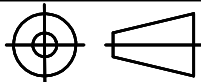

100% LABEL OUTLINE



100% ARTWORK ON LABEL



50% ANNOTATED LABEL

	DSN'D JCD	MAT'L ADHESIVE-BACKED CLEAR POLYESTER LABEL, MATTE FINISH			
	DRAWN JCD	5 MIL TOTAL THICKNESS			
	CHK'D TB	-			
ASME Y14.5M-1994 APPLIES		CBM LABEL			
EXCEPT AS NOTED, ALL DIMS ARE MM DIMENSIONS IN [ ] ARE INCHES		PAPER SIZE		21 Boston Road PO Box 730 Southborough, MA 01772 Phone: 508.303.8811 Fax: 508.357.7990	This document contains confidential or proprietary information of FitSense, Inc. Neither this document nor the information therein is to be reproduced, distributed, used or disclosed either in whole or in part, except as specifically authorized by FitSense, Inc.
SURFACE FINISH: 3.2µm✓		A			
2 PLACE DECIMAL ± 0.1 mm	1 PLACE DECIMAL ± 0.25 mm 0 PLACE DECIMAL ± 1.0 mm ANGULAR TOL'S ± 1.0°	SCALE:1:1	DRAWING NUMBER	REV	
		SHEET 1 OF 1			
		DATE 2/14/2007			