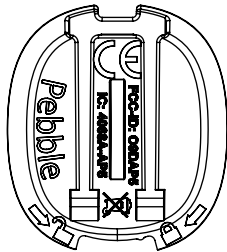
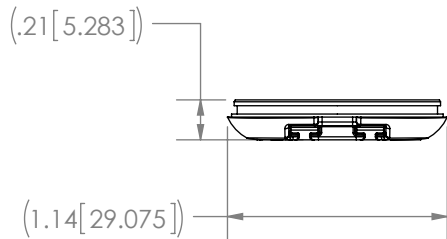
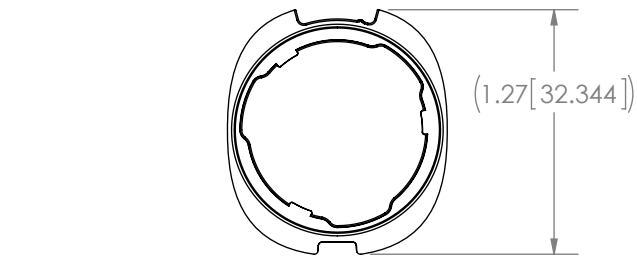


REV	CHANGED BY	DATE	DESCRIPTION
-----	------------	------	-------------

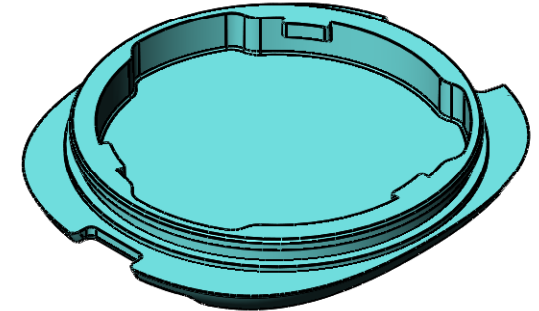


NOTES (UNLESS OTHERWISE SPECIFIED):

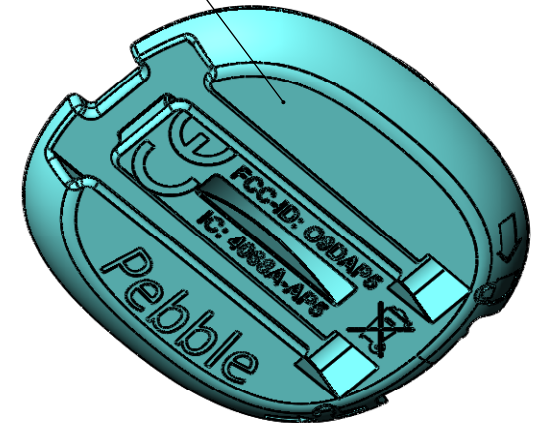
3D CAD DATABASE CONTROLS PART GEOMETRY. REFER TO 3D CAD GEOMETRY FOR ANY PART DIMENSION NOT EXPLICITLY AND COMPLETELY DEFINED BY DRAWING DIMENSIONS.

FITLINXX DESIGN APPROVAL REQUIRED BEFORE THE START OF PRODUCTION MOLD FABRICATION, TO INCLUDE:

- GATE AND EJECTOR PIN LOCATIONS,
- PARTING LINE LOCATION,
- DRAFT DEVIATIONS FROM 3D CAD GEOMETRY.
- ALL SURFACES FREE FROM TOOLING MARKS.



MATTE FINISH ON
CAVITY SIDE



Drawn by SolidWorks



DSN'D JCD
DRAWN EWG
CHK'D JM

MAT'L POLYCARBONATE

ASME Y14.5M-1994 APPLIES

EXCEPT AS NOTED, ALL DIMS ARE MM
DIMENSIONS IN [] ARE INCHES

SURFACE FINISH: 3.2µm

2 PLACE DECIMAL ± 0.1 mm
1 PLACE DECIMAL ± 0.25 mm
0 PLACE DECIMAL ± 1.0 mm
ANGULAR TOL'S ± 1.0°

CASE BOTTOM ACTIPED 5

PAPER SIZE

A

SCALE:1:1

DATE 1/23/2012

FitLinxx

SHEET 1 OF 1

542 Westport Avenue
2nd Floor
Norwalk, CT 06851
Phone: (203) 316-5151
e-mail: info@fitlinxx.com

This document contains confidential or
proprietary information of FitLinxx.
Neither this document nor the information
therein is to be reproduced, distributed, used
or disclosed either in whole or in part, except
as specifically authorized by FitLinxx.

DRAWING NUMBER

507-00060-01

REV

01