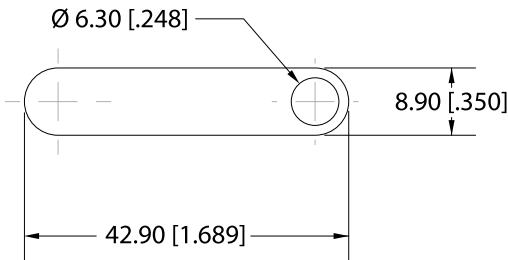
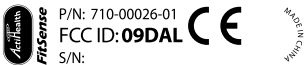


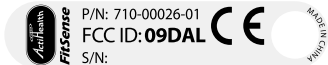
07	JCD	9/3/2006	CHANGED FROM B-SIZED TO A-SIZED DRAWING.
06	JCD	5/24/2006	REPLACED "ACTIHEALTH.COM" WITH "FITSense" AND AH ACTIVATED LOGO.
05	JCD	3/13/2006	REMOVED BOX AROUND S/N
04	JCD	1/31/2006	ADDED P/N. CHANGED S/N SCHEME. REARRANGED.
03	JCD	1/19/2006	LONGER LABEL FOR LENGTHENED CASE
02	JCD	12/20/2005	ADDED S/N
REV	CHANGED BY	DATE	DESCRIPTION



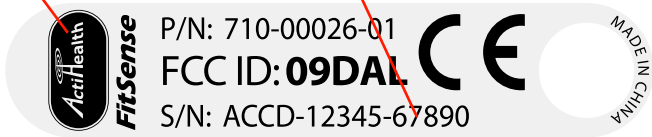
LABEL DIMENSIONS



100% ARTWORK



100% ARTWORK ON LABEL



200% ARTWORK ON LABEL

ALL PRINTING: BLACK

SERIALIZATION OF LABELS IS REQUIRED:  
A TEXT FILE WILL BE PROVIDED WITH  
BATCH OF 14-DIGIT NUMBERS TO BE PRINTED.

	DSN'D	JCD	MAT'L ADHESIVE-BACKED WHITE POLYESTER LABEL		
	DRAWN	JCD	5 MIL TOTAL THICKNESS		
	CHK'D	TB	-		
ASME Y14.5M-1994 APPLIES			ACTILINK LABEL		
EXCEPT AS NOTED, ALL DIMS ARE MM DIMENSIONS IN [ ] ARE INCHES			PAPER SIZE	<div>           21 Boston Road            PO Box 730            Southborough, MA 01772            Phone: 508.303.8811            Fax: 508.357.7990         </div> <div>           This document contains confidential or            proprietary information of FitSense, Inc.            Neither this document nor the information            therein is to be reproduced, distributed, used            or disclosed either in whole or in part, except            as specifically authorized by FitSense, Inc.         </div>	
SURFACE FINISH: 3.2µm/√			A		
2 PLACE DECIMAL ± 0.1 mm			SCALE:1:1	SHEET 1 OF 1	DRAWING NUMBER 214-00013-01
1 PLACE DECIMAL ± 0.25 mm			DATE 12/15/2005		
0 PLACE DECIMAL ± 1.0 mm					
ANGULAR TOL'S ± 1.0°					
					REV 07