

Table of Contents

I . Features

1. Introduction
2. Components

II . Installation

1. Overall installation procedure
2. Connection
3. Device driver installation
4. Program installation
5. Finger Print wheel Mouse Installation

III. Program deletion

IV. Zimuni Functions

1. Administrator
2. Logon
3. Screensaver
4. Folder encryption & decryption

Q&A

I . Features

1. Introduction

Zimuni developed by Saehantelecom Co, Ltd is an epochal PC security product for user authentication and information security. Realize the convenience and security provided by Zimuni SFM-2000A!

Nothing can be easier and more secure than a fingerprint!

Worry about forgery or forgotten passwords? Don't. Complicated algorithms are not necessary. Zimuni securely protects your system.

Logon, Screensaver, Perfect protect for file and folder!

Zimuni protects the system with logon, screensaver, and file/folder encryption using fingerprint authentication. Multi-authentication and administrative functions are provided as well.

Zimuni SFM-2000A - Fingerprint identification plus wheel mouse

Zimuni is the perfect security product combining fingerprint identification within a wheel mouse. It provides system security and convenience along with scroll and zoom.

<< Application >>

- Perception and recognition of individuals for e-mail and e-document exchange.
- Personal system security.
- Data protection and system access control.
- Fingerprint verification for criminal investigation by the police.

<< System requirements >>

OS: Microsoft Windows 98

CPU: Pentium 133MHz or higher

HDD: More than 20 MB needed

Memory: More than 32 MB

Interface: 1 USB port, PS/2 port (for wheel mouse)

Installation program: Microsoft Internet Explorer 4.0 or above

2. Components

Fingerprint identification device:

<< Zimuni SFM-2000A >>



(2) Zimuni 2.0 Program CD

(3) Manual

- ① Certificate of guaranty (Attachment in manual)
- ② License agreement (Attachment in manual)

II. Installation

1. Overall installation procedure

The overall installation procedure is as follows:

1. Connect fingerprint identification device or wheel mouse to the system. **(for mouse, USB port must be connected in advance of PS/2)**
2. A message for inserting the CD will appear due to Windows 98 Plug & Play, which senses new hardware.
3. Insert the 'Zimuni 2.0' CD into the CD-ROM Drive, and then follow the hardware installation wizard to install the fingerprint identification device or wheel mouse.
4. When driver installation is finished, run the setup.exe file to install the Zimuni 2.0 program
5. Restart the system after installation, and logon with the name and password typed during installation.
6. Authentication method can be changed to fingerprint, password, or both using the Zimuni Administrator.

**** For fingerprint identification wheel mouse**

If you purchased a fingerprint identification wheel mouse, please run mouse/setup.exe included with 'Zimuni 2.0' to install the mouse driver after the above procedure has been completed.

**** In case Internet Explorer 4.0 or above version is not installed**

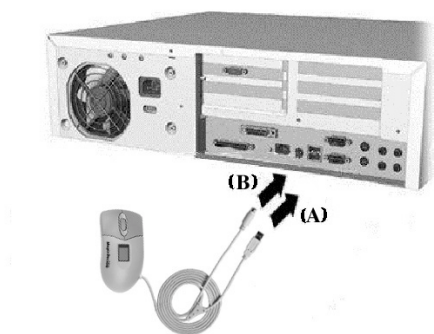
Run IE501/ie5setup.exe included with 'Zimuni20' to install Internet Explorer 5.01.

**** USB**

System mainboard should support USB, the USB port should be setup as 'Enabled' under CMOS options.

2. Connection

<< Zimuni SFM-2000A >>



(A) Connect to USB Port - **Connect this first!**

(B) Connect to PS/2 Port- **Connect this second!**

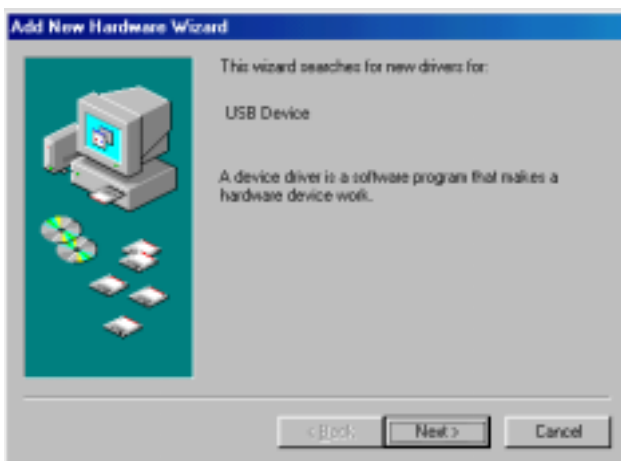
※ Connection is very important. Please connect USB port first.

3. Device driver installation

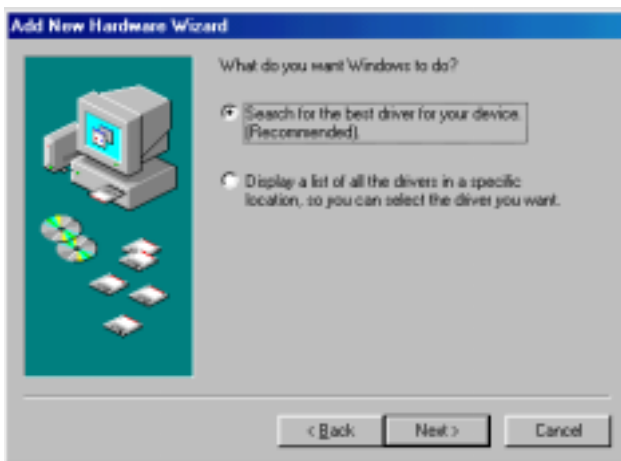
USB¹ (Plug & Play² support)

When the fingerprint identification device and wheel mouse are connected to the system, 'New hardware installation wizard' with 'New hardware detected' will appear (Plug & Play function).

Warning! Main system board support USB and USB port should be setup as 'Enabled' in CMOS option.



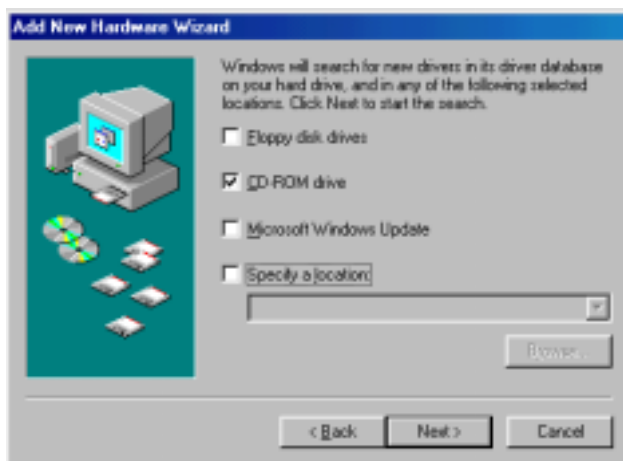
Click <Next> in the 'Add New Hardware Wizard' window shown above.



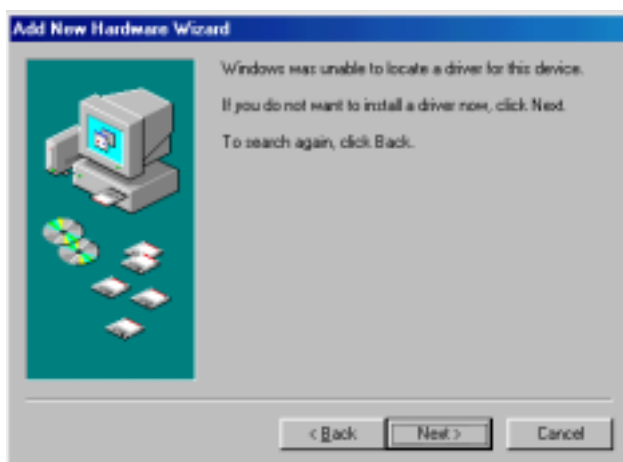
Select <Search for the best driver for your device> and then click 'Next'

¹ Abbreviation for Universal Serial Bus and supports 12Mbps data transmission rate, which is the new External Bus Standard

² Also called P&P, provides for automatic installation.

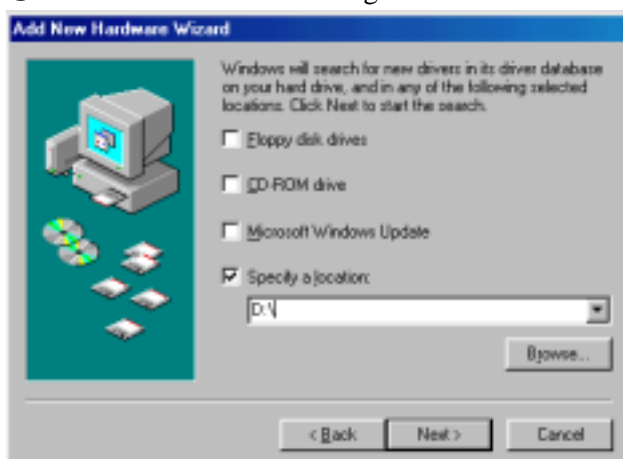


Insert CD and select 'CD-ROM Drive' and then click 'Next'.



※ **Attention! When CD-ROM drive path is not found.**

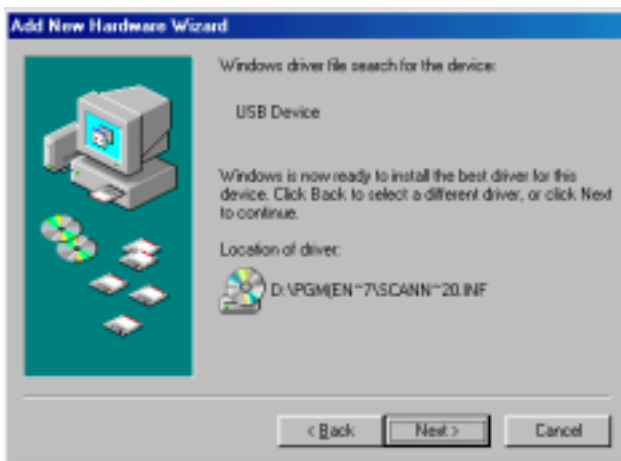
- ① Check whether CD is properly inserted.
- ② Click 'Back' after checking CD.



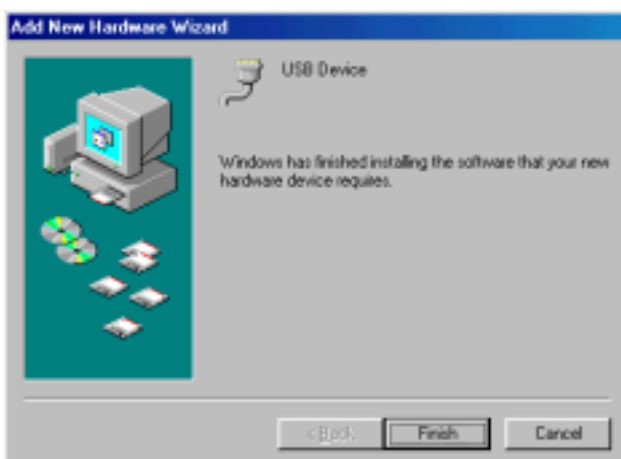
- ③ Select 'Specify a location' and then click 'Browse'.



④ In the 'Browse for Folder' window, select CD-ROM drive and click 'OK'.



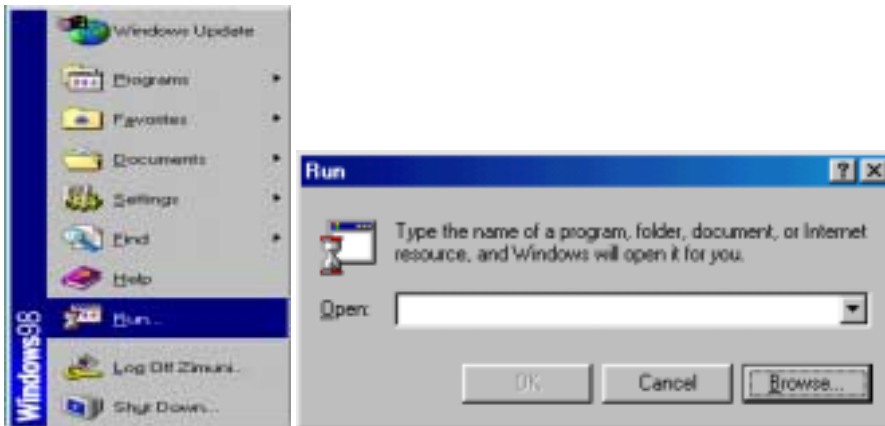
Installation will start after you click 'Next' in the above window.



Above window will appear when the device driver is successfully installed.
Click 'Finish' in this window.

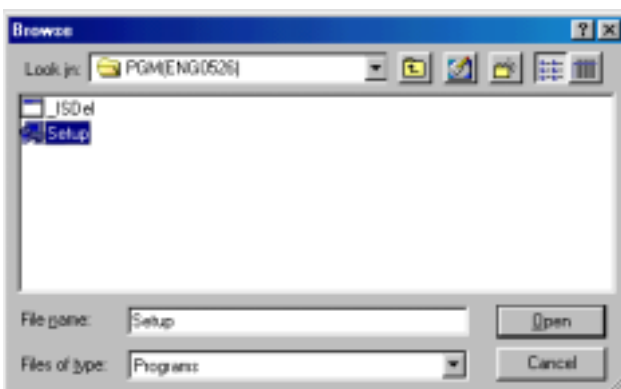
4. Program installation

Start to install Zimuni.



Select 'Run' from the start-up menu.

In the above window, type the drive and name of the program or specify the path by clicking 'Browse'.



Select 'Setup.exe' in the window above, and click 'Open'. Click 'OK' in the 'Run' window once the proper path is selected.



In the program installation window, click 'Next'.



In the 'Software License Agreement' window, click 'Yes'.



Click 'Next' after typing 'Name', 'Company', and 'Serial no', which is on the back of the CD case.



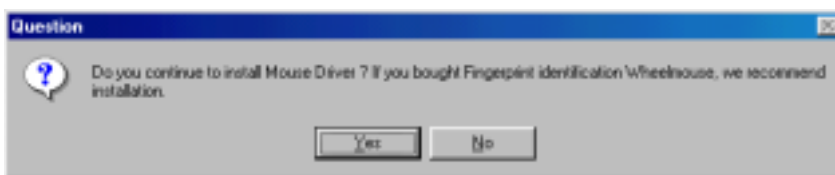
The program begins installation after clicking 'Next' after the name of the program to be installed.



Enter administrator name, password, and confirm password. Then click <Next>.

**** The password entered in the above window will be used for the first logon after program installation.**

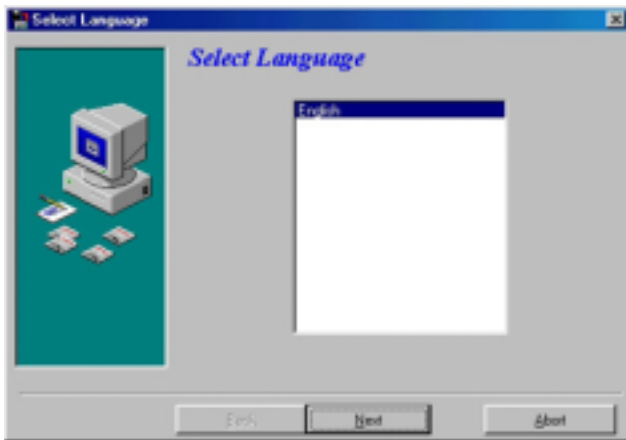
The authentication method can be changed to fingerprint, password, and both using the Administrator.



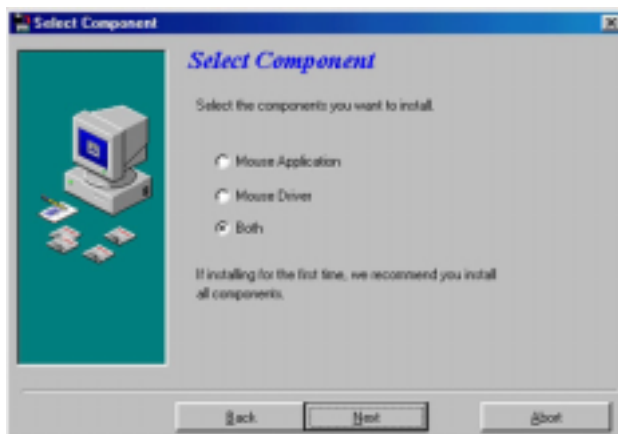
Zimuni program is successfully installed, and you continue to Install wheel mouse driver by clicking 'Yes'.

click 'No', If you don't need to install wheel mouse (Zimuni SFM-2000A) driver.

5. Fingerprint Mouse Installation



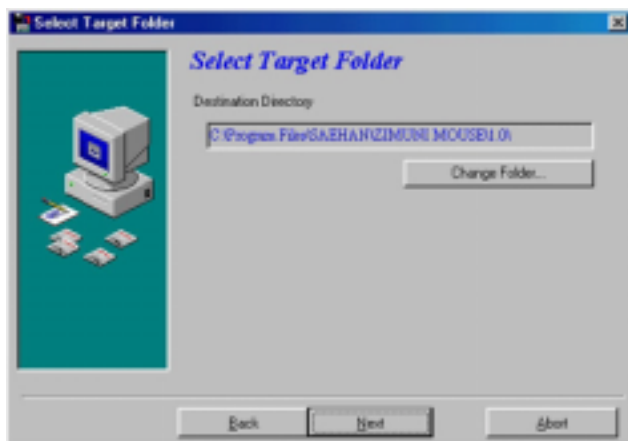
Above screen is for language selection. Select 'English' and click 'Next'.



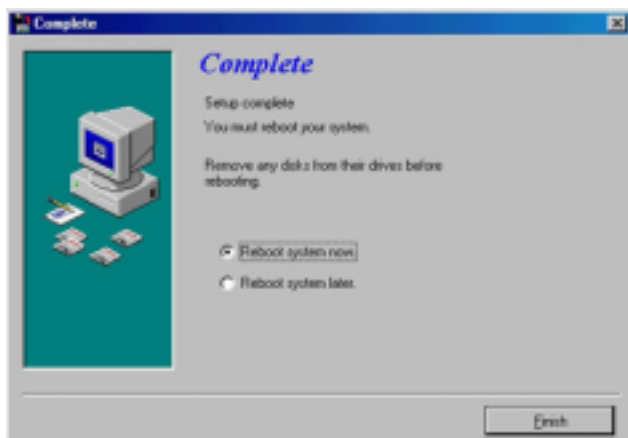
You can install mouse application (wheel/zoom), mouse driver, or both. If you want only the application, select 'Mouse application' If you want only the mouse driver, select 'mouse driver' and if you want both, select 'Both'. Click 'Next'.



This screen is to select device type.
Select 'PS2 Port' and click 'Next'.



Click 'Next' if you want to install in said folder, if not click 'change folder'. Said folder on above screen is recommended.



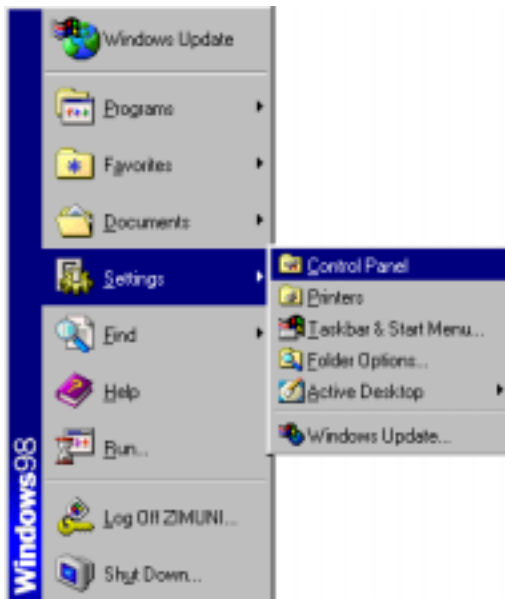
Above window will appear after finishing a file copy.

The system will restart after clicking the 'Finish' button and all fingerprint identification mouse installation processes will be completed.

III. Program deletion

**** Only the administrator can delete the program.**

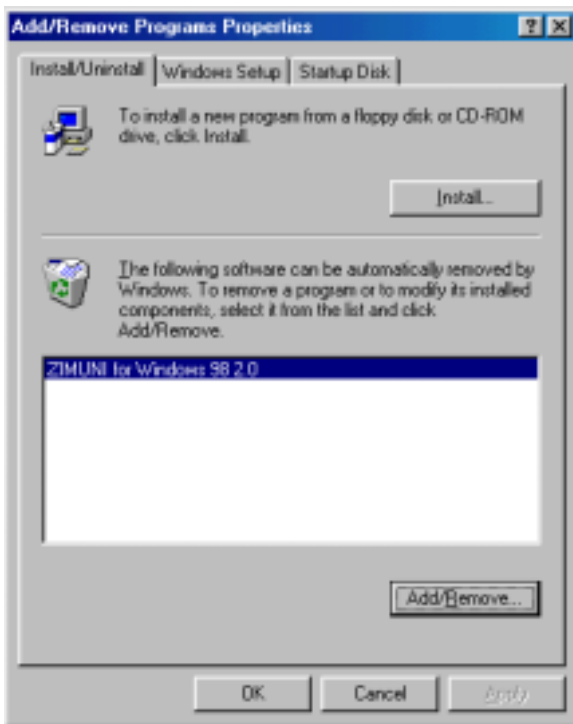
The authorization of the administrator can be set when a new user is registered in <Administrator>.



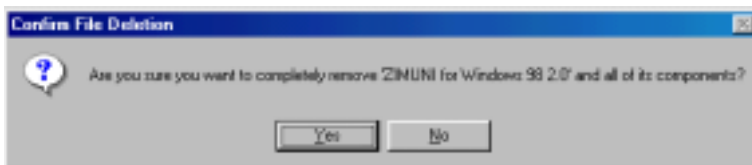
Start-up -> Settings -> Control Panel.



Double-click 'Add/Remove Programs' in the Control Panel.



Click 'Add/Remove' after selecting 'Zimuni for Windows 98 2.0' in the 'Install/Uninstall' window.



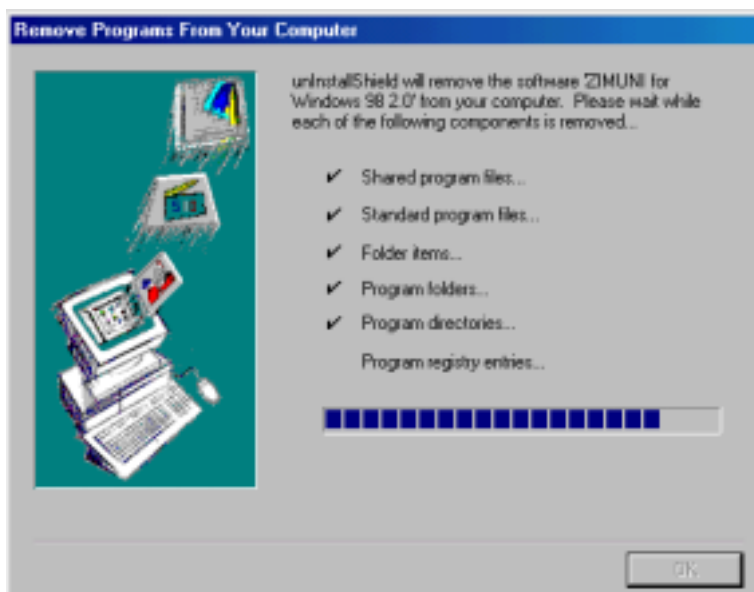
Above window is confirms file deletion. Click 'Yes' to delete.



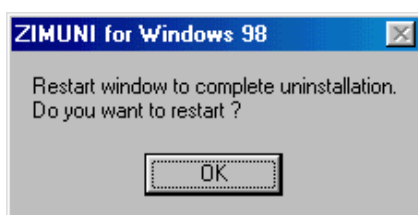
Fingerprint verification window appears, and verifies the fingerprint.

**** This manual has been prepared for fingerprint authentication users.**

A different window will appear in compliance with different authentication methods such as password/fingerprint/both.



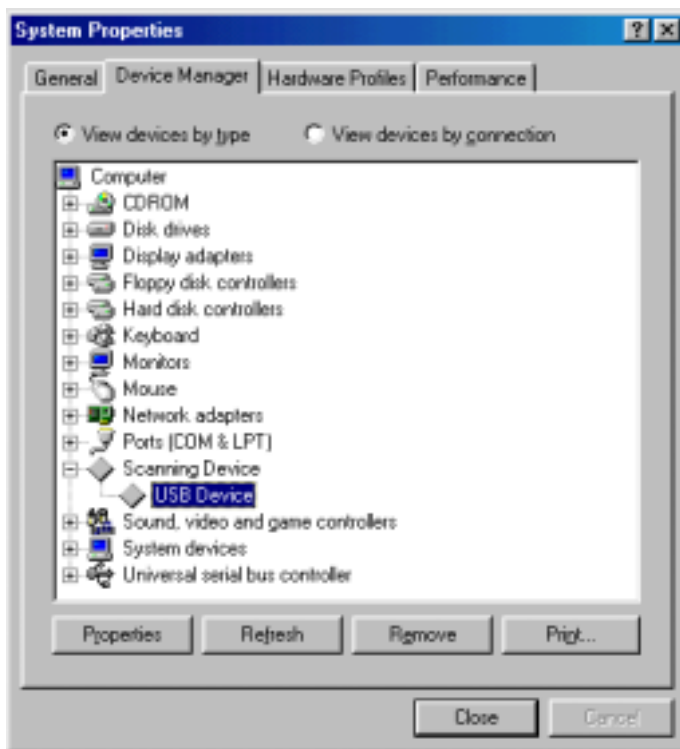
The above window shows deletion in progress.
When deletion is complete, Click 'OK'.



Click 'OK' when the above window appears.



Double click 'System' in the 'Control panel' window.

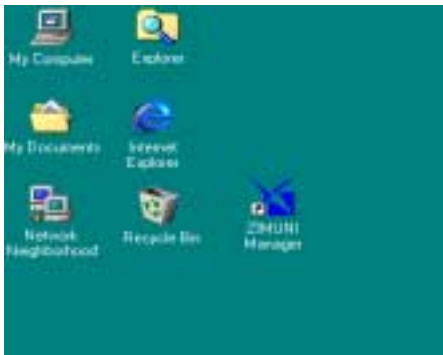


Click 'Remove' after selecting 'USB Device' under 'Scanning Device' in the Device Manager and Restart the system.

All file deletion has been completed.

IV. Zimuni Functions

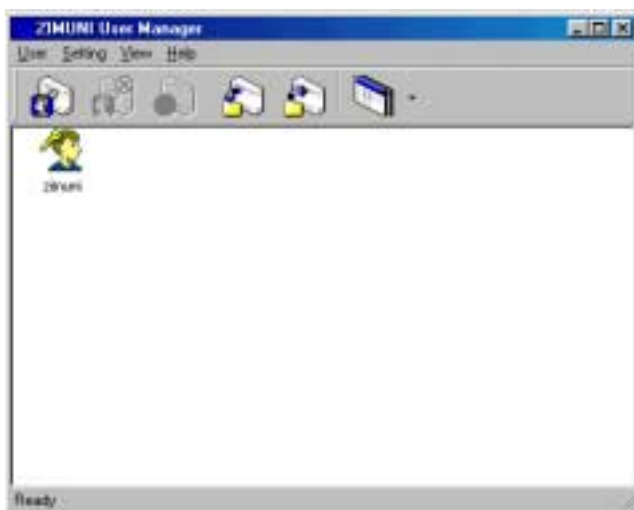
1. Administrator



Click <Zimuni User Manager> icon.



Place fingerprint on the device.

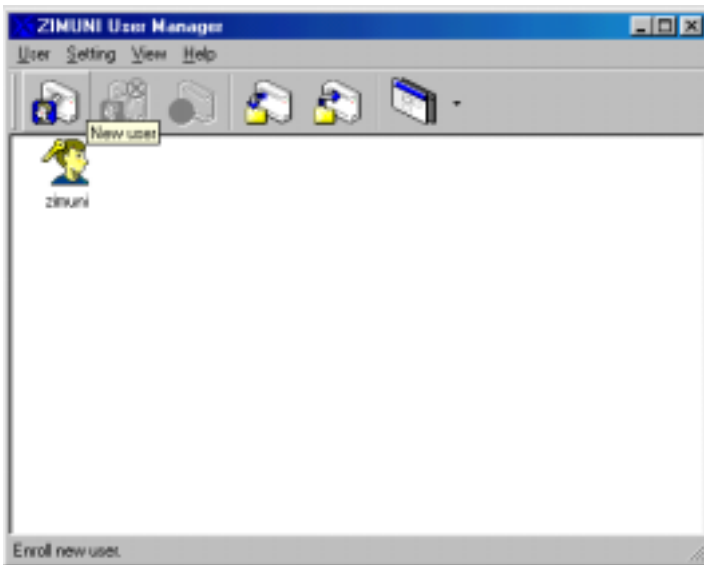


Above window is for fingerprint registration, deletion, and management. New user, Delete, Information, Back-up, and Restore shown in the toolbar will be explained.

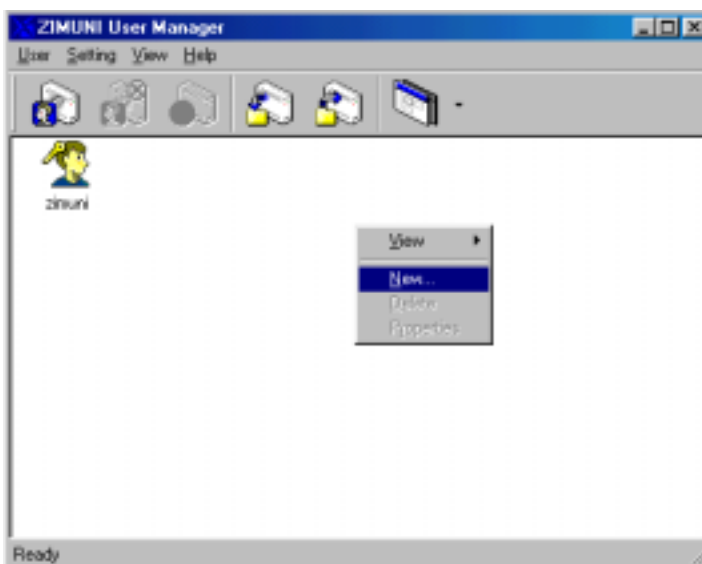
* Toolbar



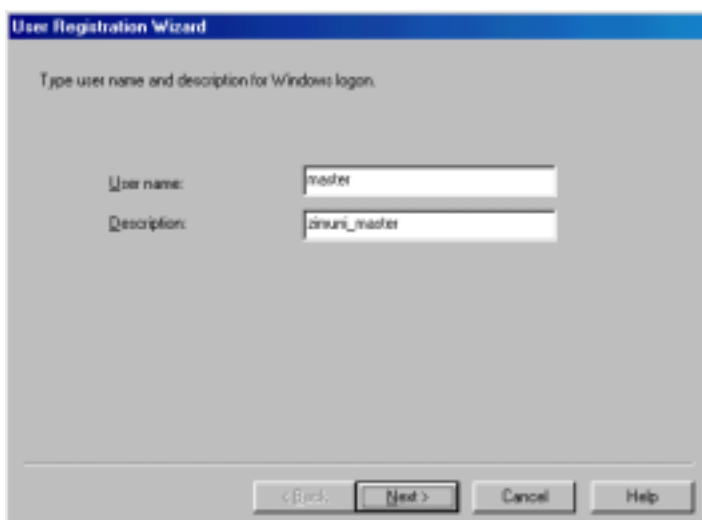
1) New user



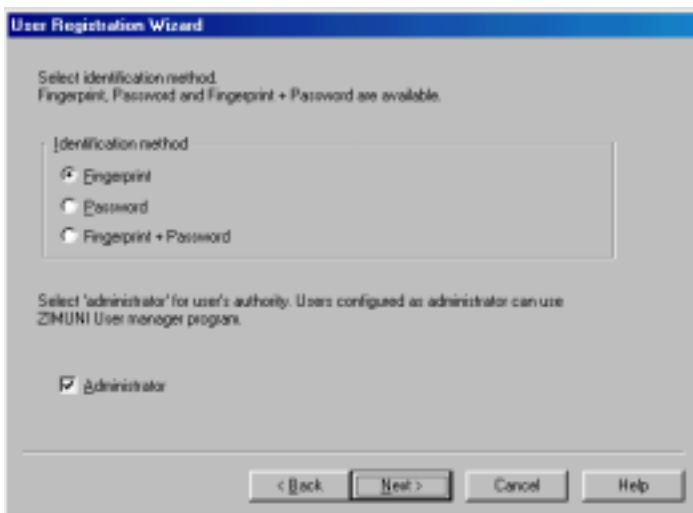
Go into the user registration wizard window by clicking <New user> icon in the toolbar.



Go into New user registration wizard window by selecting New user in the menu that appears by clicking the right mouse button.

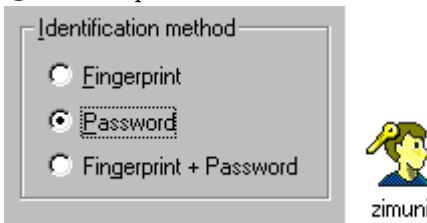


Click 'Next' after entering User name and Description.



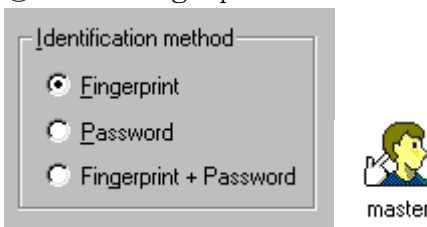
(1) Authentication

① When password is selected



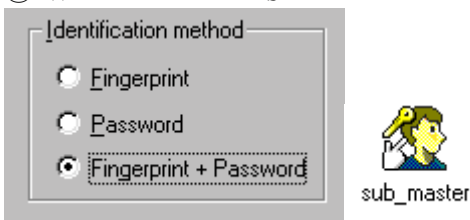
The key icon appears when password is used for authentication, and the password will be used for Zimuni related program encryption.

② When fingerprint is selected



The finger icon appears when fingerprint is used for authentication and the fingerprint will be used for Zimuni related program encryption

③ When both are selected



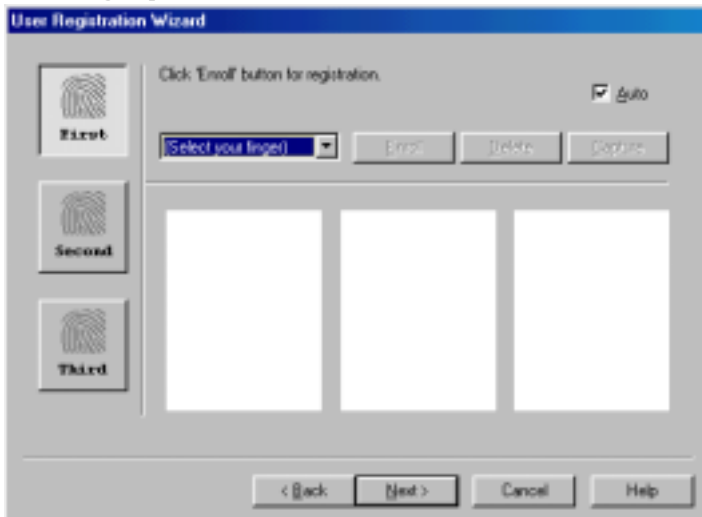
The finger and key icons appear when both are used for authentication and both will be used for Zimuni related program encryption.

(2) Authorization



Administrator authorizes a user to access the ‘ Zimuni Administrator’

(3) Fingerprint enrollment



The step for enrolling New User’s fingerprint. Select ‘First’ and then click ‘Enroll’.

① ‘First’, ‘Second’, ‘Third’

Two more fingerprints can be registered in Second and Third in case of fingerprint damage.

② (Select your finger) is a description of information for enrolled fingerprints.

예) Enrolled fingerprint is lefthand thumb: Left hand, thumb

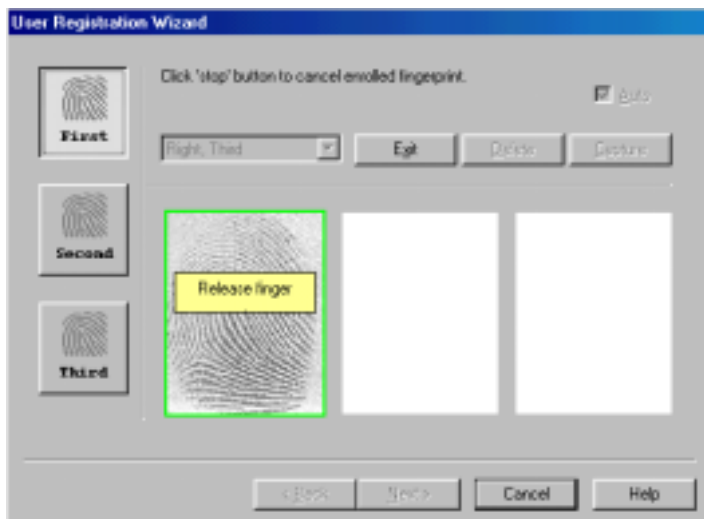
③ Enrollment

Ⓐ **Automatic (A):** The enrollment will be automatically processed by placing one’ s finger on the sensor when Automatic is selected.

Ⓑ **Non-Automatic:** Click ‘ Enroll’ while having the fingerprint on the sensor and then either clck <Capture> or press the spacebar for three fingerprint registrations.



Please place a finger on the sensor as indicated.

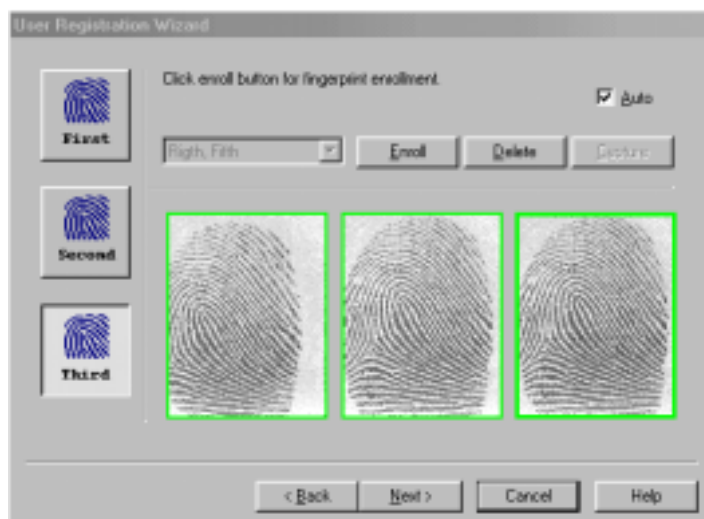


Remove finger when 'Release finger' appears. Enrollment will complete after three confirmation times per finger. Please follow the directions shown in the window.

**** Registration will be stopped during the process by clicking <Stop>, and restarted by clicking <Enroll>**



Above window will be shown after completion of three confirmation times. Click <OK>.



'Second' and 'Third' are registered in the same way as 'First'. Click <Next> when fingerprint enrollment is finished. after, Click <Finish> and then enrollment is complete.

2. Logon



If you selected fingerprint only during registration, type 'User name' and click 'OK' in the window above.

**** Password used during program installation is used at the first logon. The authentication method can be changed using <Administrator>.**



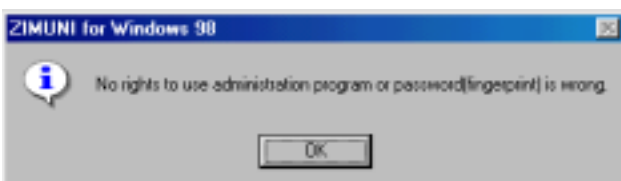
If you use fingerprint verification, this window shows after typing user name and clicking 'OK'.

Place fingerprint on the sensor for logon.

(1) Matched

The above window will appear. Now you can use your PC.

(2) Unmatched



If it does not match, the screen above will appear.

3. Screen saver

The screensaver is operated for security purposes. In order to prevent someone accessing the PC, fingerprint verification is needed to release the screensaver.



Click 'OK' after selecting 'Use Zimuni Protection' in the 'Screensaver'.



The screensaver can be set to turn on automatically when the PC is left idle for a certain period of time.

The fingerprint verification window will appear if you press any key while the screensaver is on. If the live scanned fingerprint matches a registered one, the screensaver will release.

If unmatched, screensaver remains on.

4. Folder encryption & decryption method

Folders and files can be encrypted and decrypted for security purposes.

*** Attention! Special folders and subfolders controlled by the Windows system cannot be encrypted.**

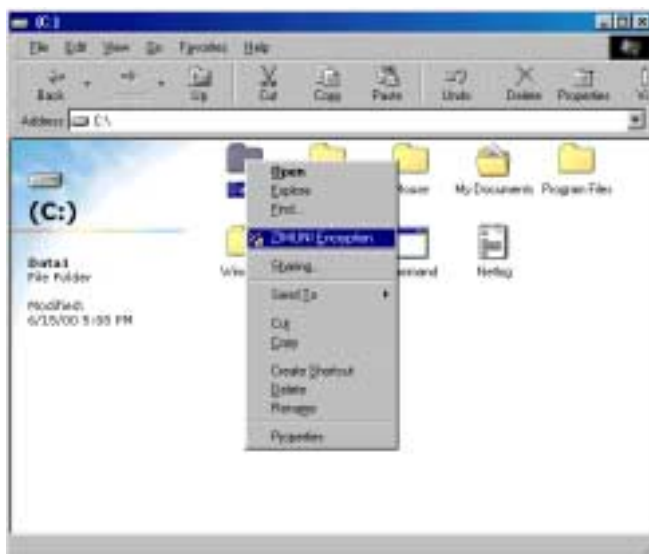
The special folders are as follows:

- Window directory (c:\Windows)
- Program directory (c:\Program Files)
- My document directory (c:\My Documents)
- Recycled (c:\Recycled)

Attention! If you encrypt the special folders, it may cause an error in the operating system.

1) Folder encryption

Only an authorized user can encrypt folders.

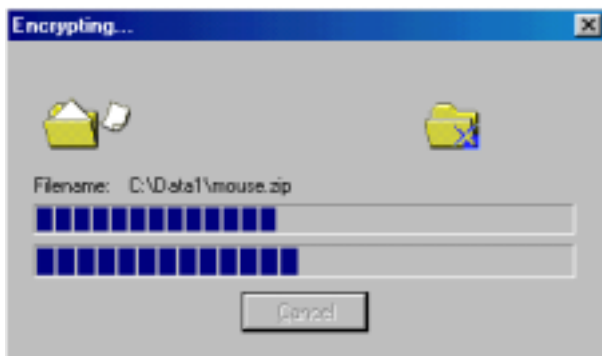


Select the folders to be encrypted and click the right button of mouse. Then execute 'Zimuni Encryption'.



This screen is for fingerprint verification. Encryption is executed when the live scanned fingerprint matches the registered one.

① Matched

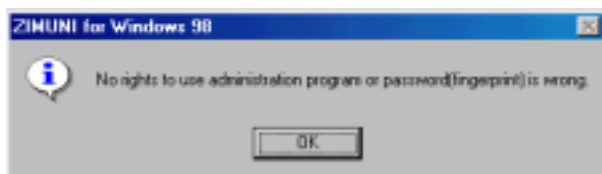


Folders are being encrypted.



Above icons indicate encrypted folders.

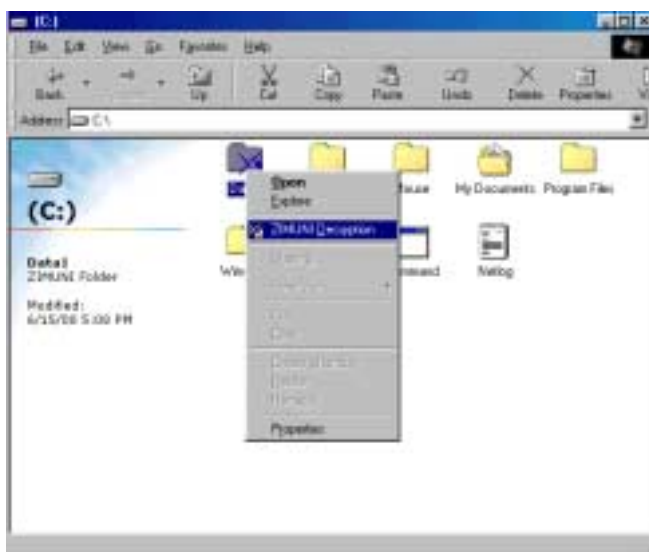
② Unmatched



When unmatched, above message appears.

2) Folder decryption

Encrypted folders can be decrypted only by entering the fingerprint, password, or both which was used for encryption.



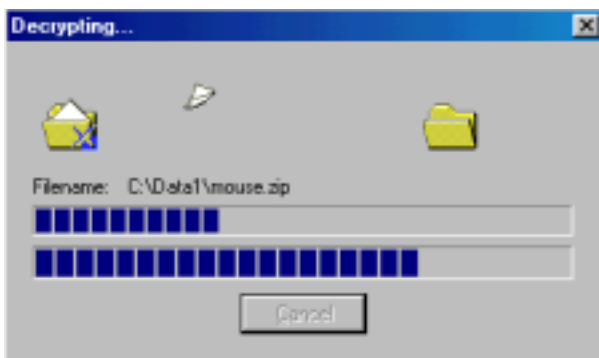
Select the encrypted folder to be decrypted and click the right mouse button. Then execute 'Zimuni Decryption'.



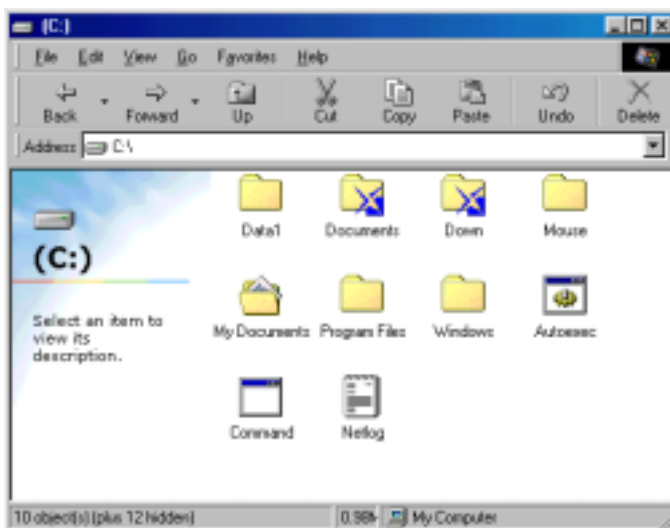
The above is for fingerprint verification.

Decryption is executed when the live scanned fingerprint matches the registered one.

① Matched

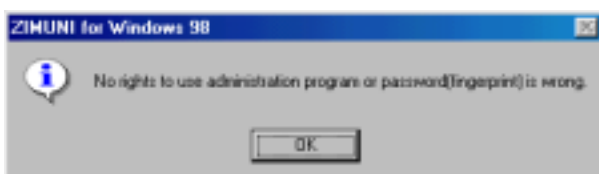


The folder is being decrypted.



The above is shows decrypted folders.

② Unmatched



When unmatched, the above message appears.

Q&A

[Q] Why is the Windows password asked for continuously after fingerprint verification at Zimuni logon?

[A] The user password transfers to the system after fingerprint verification at Zimuni logon. In this process, the system demands the Windows password, because the user logged on using fingerprint. If the user deletes the Windows password in the control panel, the Windows logon will not appear. Password and fingerprint verification does not cause this problem.

[Q] Why does Windows logon appear when Zimuni is used for fingerprint authentication?

[A] If the password of Zimuni logon is different from the Windows password, the Windows logon screen will appear. If the user change the Windows password in the control panel to save the password of Zimuni logon, the Windows logon screen will not appear.

[Q] My PC logon is by fingerprint verification, but the network server should logon by password. If I use Zimuni for logon, I have to enter the password for Network logon after Zimuni logon. Which is the better way to access?

[A] If you logon through fingerprint and password, the network server will automatically logon.

[Q] Can a specific file be encrypted?

[A] Partially possible. Because Zimuni encrypts folders for convenience, specific files can be encrypted automatically when moved to an encrypted folder. If a file in an encrypted folder moves to an unencrypted folder, it will be automatically decrypted.

[Q] I ran setup again while using Zimuni, but the initial user registration window did not appear.

[A] If you try to run setup again, a message asking that you would use an existing database will appear. If yes, initial user registration window will not appear and you should logon through the existing database.

[Q] Fingerprint verification is suddenly inoperable.

[A] Clear the sensor and contact the A/S dept. if the problem continues.

[Q] The fingerprint enrolled in 'First' cannot be deleted. How can I use another finger for 'First'?

[A] Fingerprint 1 cannot be deleted or changed because it is regarded as the user's ID. If the user is deleted and tries to enroll with same user name, the system recognizes it as different user. If you want to use another finger, please use enrollment of Fingerprint 2, Fingerprint 3.

[Q] How many users can enroll?

[A] No limit.

[Q] What is the function of security level in Administrator?

[A] It is the level of fingerprint authentication. When high is selected, it requires a high fingerprint match for success. If the status of user's fingerprint is not good, please select low level.

[Q] Which OS can be used for Zimuni?

[A] Windows 98.

[Q] The hardware installation wizard does not automatically appear when fingerprint identification device is connected to the system.

[A] Please confirm that USB Port is set as 'Enabled' in CMOS setting. If the Plug & Play function is not active in spite of Enabled setting, please contact us.

[Q] I cannot delete a user in Administrator.

[A] Logon user cannot be deleted. Another user who has the authority for Administrator can delete after logoff.

[Q] When I delete folders, 'folders encrypted by other users cannot be deleted' appears. Can I find out who encrypted it?

[A] Select folder and click right mouse button to go to properties, then the user who encrypted the folder will be shown.