



## Shenzhen Huaxia Testing Technology Co., Ltd

1F., Block A of Tongsheng Technology Building, Huahui Road, Dalang Street, Longhua District, Shenzhen, China

Telephone: +86-755-26648640

Fax: +86-755-26648637

Website: [www.cqa-cert.com](http://www.cqa-cert.com)

Report Template Version: V04

Report Template Revision Date: 2018-07-06

# TEST REPORT

**Report No.:** CQASZ20200901100E-02  
**Applicant:** Xiamen Pinnacle Electrical Co.,Ltd.  
**Address of Applicant:** 4F, Guang Xia Building, Torch High-Tech Zone, Xiamen, China  
**Equipment Under Test (EUT):**  
**Product:** BAR CODE SCANNER  
**Model No.:** BR1X,BR2X,BR3X,BR4X,BR5X,BR6X,BR7X,BR8X, BRX  
**Test Model No.:** BR1X  
**Brand Name:** ACLAS  
**FCC ID:** O89BR1X  
**Standards:** 47 CFR Part 15, Subpart C  
**Date of Receipt:** 2020-11-16  
**Date of Test:** 2020-11-16 to 2020-12-09  
**Date of Issue:** 2020-12-10  
**Test Result:** PASS\*

\*In the configuration tested, the EUT complied with the standards specified above

**Tested By:**

*Tiny You*

(Tiny You)

**Reviewed By:**

*Sheek Luo*

(Sheek Luo)

**Approved By:**

*Jack Ai*

(Jack Ai)



## 1 Version

### Revision History Of Report

Report No.	Version	Description	Issue Date
CQASZ20200901100E-02	Rev.01	Initial report	2020-12-10

## 2 Test Summary

Test Item	Test Requirement	Test method	Result
Antenna Requirement	47 CFR Part 15, Subpart C Section 15.203/15.247 (c)	ANSI C63.10 2013	PASS
AC Power Line Conducted Emission	47 CFR Part 15, Subpart C Section 15.207	ANSI C63.10 2013	N/A
Conducted Peak Output Power	47 CFR Part 15, Subpart C Section 15.247 (b)(3)	ANSI C63.10 2013	PASS
6dB Occupied Bandwidth	47 CFR Part 15, Subpart C Section 15.247 (a)(2)	ANSI C63.10 2013	PASS
Power Spectral Density	47 CFR Part 15, Subpart C Section 15.247 (e)	ANSI C63.10 2013	PASS
Band-edge for RF Conducted Emissions	47 CFR Part 15, Subpart C Section 15.247(d)	ANSI C63.10 2013	PASS
RF Conducted Spurious Emissions	47 CFR Part 15, Subpart C Section 15.247(d)	ANSI C63.10 2013	PASS
Radiated Spurious Emissions	47 CFR Part 15, Subpart C Section 15.205/15.209	ANSI C63.10 2013	PASS
Restricted bands around fundamental frequency (Radiated Emission)	47 CFR Part 15, Subpart C Section 15.205/15.209	ANSI C63.10 2013	PASS

N/A: The EUT powered by DC, So Not Applicable

### 3 Contents

	Page
<b>1 VERSION .....</b>	<b>2</b>
<b>2 TEST SUMMARY .....</b>	<b>3</b>
<b>3 CONTENTS .....</b>	<b>4</b>
<b>4 GENERAL INFORMATION .....</b>	<b>5</b>
4.1 CLIENT INFORMATION .....	5
4.2 GENERAL DESCRIPTION OF EUT .....	5
4.3 ADDITIONAL INSTRUCTIONS .....	7
4.4 TEST ENVIRONMENT .....	8
4.5 DESCRIPTION OF SUPPORT UNITS .....	8
4.6 STATEMENT OF THE MEASUREMENT UNCERTAINTY .....	9
4.7 TEST LOCATION .....	10
4.8 TEST FACILITY .....	10
4.9 DEVIATION FROM STANDARDS .....	10
4.10 OTHER INFORMATION REQUESTED BY THE CUSTOMER .....	10
4.11 EQUIPMENT LIST .....	11
<b>5 TEST RESULTS AND MEASUREMENT DATA .....</b>	<b>12</b>
5.1 ANTENNA REQUIREMENT .....	12
5.2 CONDUCTED PEAK OUTPUT POWER .....	13
5.3 6dB OCCUPY BANDWIDTH .....	16
5.4 POWER SPECTRAL DENSITY .....	19
5.5 BAND-EDGE FOR RF CONDUCTED EMISSIONS .....	22
5.6 SPURIOUS RF CONDUCTED EMISSIONS .....	24
5.7 RADIATED SPURIOUS EMISSION & RESTRICTED BANDS .....	30
5.7.1 <i>Spurious Emissions</i> .....	30
<b>6 PHOTOGRAPHS - EUT TEST SETUP .....</b>	<b>36</b>
6.1 RADIATED SPURIOUS EMISSION .....	36
<b>7 PHOTOGRAPHS - EUT CONSTRUCTIONAL DETAILS .....</b>	<b>38</b>

## 4 General Information

### 4.1 Client Information

Applicant:	Xiamen Pinnacle Electrical Co.,Ltd.
Address of Applicant:	4F, Guang Xia Building, Torch High-Tech Zone, Xiamen, China
Manufacturer:	Xiamen Pinnacle Electrical Co.,Ltd. Pinnacle Technology Corp.(Taiwan)
Address of Manufacturer:	Guang Xia Building, Torch High-Tech Zone,Xiamen,China NO.270,Nan-Kang RD,Section3,Taipei,Taiwan
Factory:	Xiamen Pinnacle Electrical Co.,Ltd.
Address of Factory:	Guang Xia Building, Torch High-Tech Zone, Xiamen NO.1,Fangshannan Road,Xiang'an industrial Zone,Xiamen,China

### 4.2 General Description of EUT

Product Name:	BAR CODE SCANNER
Model No.:	BR1X,BR2X,BR3X,BR4X,BR5X,BR6X,BR7X,BR8X, BRX
Test Model No.:	BR1X
Trade Mark:	ACLAS
Hardware Version:	EPBR1CMB
Software Version:	V1.001
Test sample SN:	BR1M320309505
Operation Frequency:	2405MHz~2476MHz
Channel Numbers:	16
Type of Modulation:	O-QPSK
Product Type:	<input type="checkbox"/> Mobile <input checked="" type="checkbox"/> Portable <input checked="" type="checkbox"/> Fix Location
Test Software of EUT:	Non_Signaling_Test_Tool (manufacturer declare)
Antenna Type:	PCB antenna
Antenna Gain:	0dBi
EUT Power Supply:	lithium battery:DC3.7V, Charge by DC5.0V

Operation Frequency each of channel							
Channel	Frequency	Channel	Frequency	Channel	Frequency	Channel	Frequency
1	2405MHz	5	2422MHz	9	2440MHz	13	2460MHz
2	2409MHz	6	2426MHz	10	2445MHz	14	2465MHz
3	2413MHz	7	2430MHz	11	2450MHz	15	2470MHz
4	2417MHz	8	2435MHz	12	2455MHz	16	2476MHz

Note:

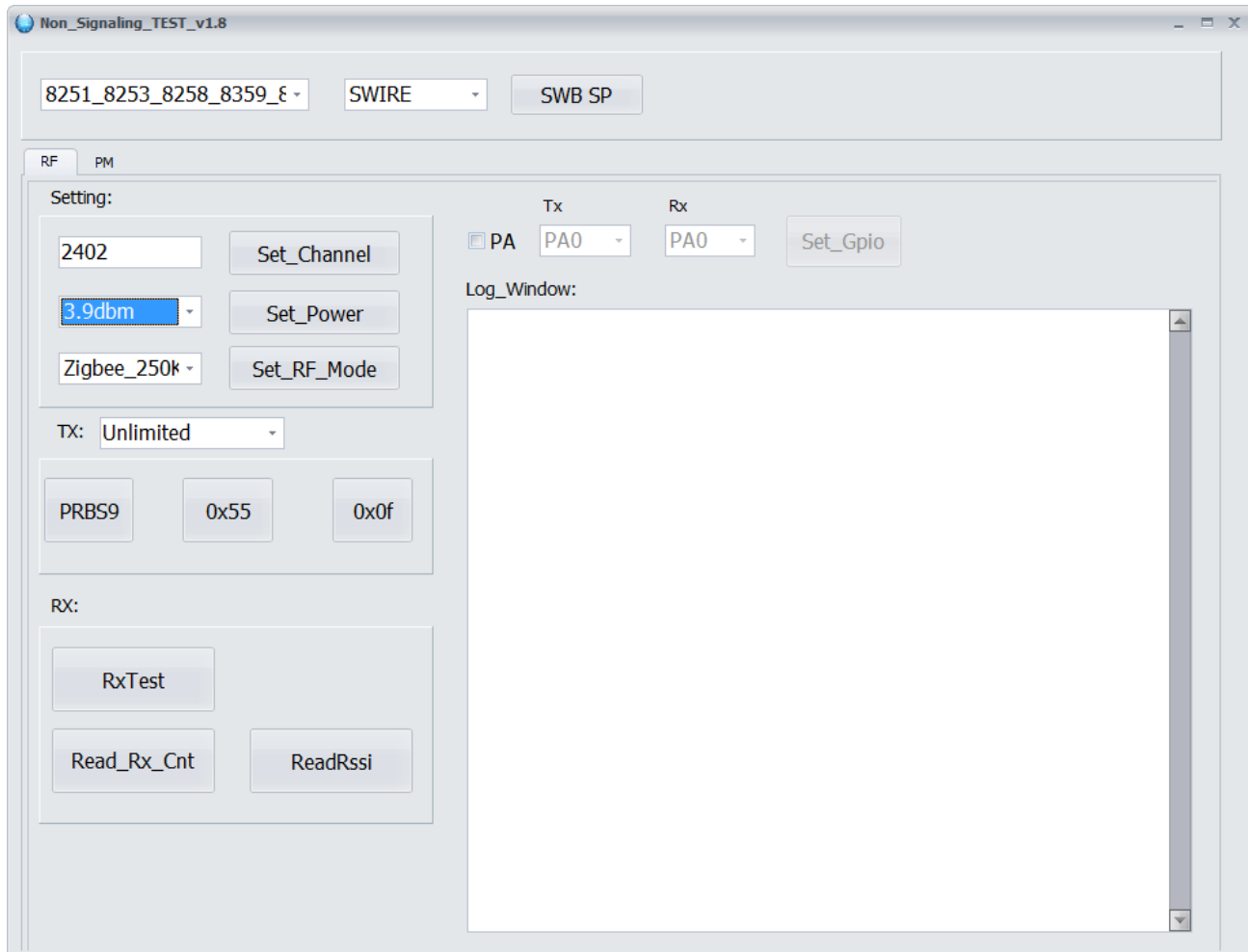
In section 15.31(m), regards to the operating frequency range over 10 MHz, the lowest frequency, the middle frequency, and the highest frequency of channel were selected to perform the test, and the selected channel see below:

Channel	Frequency
The lowest channel	2405MHz
The middle channel	2440MHz
The highest channel	2476MHz

### 4.3 Additional Instructions

EUT Test Software Settings:	
Mode:	<input checked="" type="checkbox"/> Special software is used. <input type="checkbox"/> Through engineering command into the engineering mode. engineering command: *##3646633#*#*
Use test software to set the lowest frequency, the middle frequency and the highest frequency keep transmitting of the EUT.	

#### Run Software:



The screenshot shows the 'Non\_Signaling\_TEST\_v1.8' software interface. At the top, there is a header bar with a dropdown menu showing '8251\_8253\_8258\_8359\_8' and buttons for 'SWIRE' and 'SWB SP'. Below this, there are tabs for 'RF' and 'PM'. The 'RF' tab is active, showing a 'Setting:' section with input fields for '2402', '3.9dbm', and 'Zigbee\_250k', each with a corresponding 'Set\_' button. To the right of these settings are 'Tx' and 'Rx' sections, each with a 'PA' dropdown set to 'PA0' and a 'Set\_Gpio' button. Below the 'Setting:' section is a 'TX:' dropdown set to 'Unlimited' and three buttons: 'PRBS9', '0x55', and '0x0f'. The 'RX:' section at the bottom has buttons for 'RxTest', 'Read\_Rx\_Cnt', and 'ReadRssi'. On the right side of the interface is a large 'Log\_Window' area.

#### 4.4 Test Environment

<b>Operating Environment:</b>	
<b>Radiated Emissions:</b>	
Temperature:	25.6 °C
Humidity:	55 % RH
Atmospheric Pressure:	1009 mbar
<b>Radio conducted item test (RF Conducted test room):</b>	
Temperature:	25.4 °C
Humidity:	53 % RH
Atmospheric Pressure:	1009 mbar
<b>Test mode:</b>	
Test Mode:	Use test software to set the lowest frequency, the middle frequency and the highest frequency keep transmitting of the EUT. Note: In the process of transmitting of EUT, the duty cycle >98%.

#### 4.5 Description of Support Units

The EUT has been tested with associated equipment below.

1) Support equipment

Description	Manufacturer	Model No.	Certification	Supplied by
PC	Lenovo	ThinkPad E450c	FCC ID	CQA

2) Cable

Cable No.	Description	Manufacturer	Cable Type/Length	Supplied by
/	/	/	/	/



## 4.6 Statement of the measurement uncertainty

The data and results referenced in this document are true and accurate.

The reader is cautioned that there may be errors within the calibration limits of the equipment and facilities.

The measurement uncertainty was calculated for all measurements listed in this test report acc. to CISPR 16 - 4 „Specification for radio disturbance and immunity measuring apparatus and methods – Part 4: Uncertainty in EMC Measurements“ and is documented in the **Shenzhen Huaxia Testing Technology Co., Ltd.** quality system acc. to DIN EN ISO/IEC 17025.

Furthermore, component and process variability of devices similar to that tested may result in additional deviation. The manufacturer has the sole responsibility of continued compliance of the device.

Hereafter the best measurement capability for CQA laboratory is reported:

No.	Item	Uncertainty	Notes
1	Radiated Emission (Below 1GHz)	5.12dB	(1)
2	Radiated Emission (Above 1GHz)	4.60dB	(1)
3	Conducted Disturbance (0.15~30MHz)	3.34dB	(1)
4	Radio Frequency	$3 \times 10^{-8}$	(1)
5	Duty cycle	0.6 %.	(1)
6	Occupied Bandwidth	1.1%	(1)
7	RF conducted power	0.86dB	(1)
8	RF power density	0.74	(1)
9	Conducted Spurious emissions	0.86dB	(1)
10	Temperature test	0.8℃	(1)
11	Humidity test	2.0%	(1)
12	Supply voltages	0.5 %.	(1)
13	Frequency Error	5.5 Hz	(1)

(1) This uncertainty represents an expanded uncertainty expressed at approximately the 95% confidence level using a coverage factor of  $k=2$ .

## 4.7 Test Location

**Shenzhen Huaxia Testing Technology Co., Ltd,**

1F., Block A of Tongsheng Technology Building, Huahui Road, Dalang Street, Longhua District, Shenzhen, China

## 4.8 Test Facility

- **A2LA (Certificate No. 4742.01)**

Shenzhen Huaxia Testing Technology Co., Ltd., Shenzhen EMC Laboratory is accredited by the American Association for Laboratory Accreditation(A2LA). Certificate No. 4742.01.

- **FCC Registration No.: 522263**

Shenzhen Huaxia Testing Technology Co., Ltd., Shenzhen EMC Laboratory has been registered and fully described in a report filed with the (FCC) Federal Communications Commission. The acceptance letter from the FCC is maintained in our files. Registration No.:522263

## 4.9 Deviation from Standards

None.

## 4.10 Other Information Requested by the Customer

None.

#### 4.11 Equipment List

Test Equipment	Manufacturer	Model No.	Instrument No.	Calibration Date	Calibration Due Date
EMI Test Receiver	R&S	ESR7	CQA-005	2020/10/25	2021/10/24
Spectrum analyzer	R&S	FSU26	CQA-038	2020/10/25	2021/10/24
Preamplifier	MITEQ	AMF-6D-02001800-29-20P	CQA-036	2020/10/25	2021/10/24
Loop antenna	Schwarzbeck	FMZB1516	CQA-060	2020/10/21	2021/10/20
Bilog Antenna	R&S	HL562	CQA-011	2020/9/26	2021/9/25
Horn Antenna	R&S	HF906	CQA-012	2020/9/26	2021/9/25
Horn Antenna	Schwarzbeck	BBHA 9170	CQA-088	2020/10/25	2021/10/24
Coaxial Cable (Above 1GHz)	CQA	N/A	C007	2020/9/26	2021/9/25
Coaxial Cable (Below 1GHz)	CQA	N/A	C013	2020/9/26	2021/9/25
Antenna Connector	CQA	RFC-01	CQA-080	2020/9/26	2021/9/25
RF cable(9KHz~40GHz)	CQA	RF-01	CQA-079	2020/9/26	2021/9/25
Power divider	MIDWEST	PWD-2533-02-SMA-79	CQA-067	2020/9/26	2021/9/25

#### Test software:

	Manufacturer	Software brand
Radiated Emissions test software	Tonscend	JS1120-3
Conducted Emissions test software	Audix	e3
RF Conducted test software	Audix	e3

#### Note:

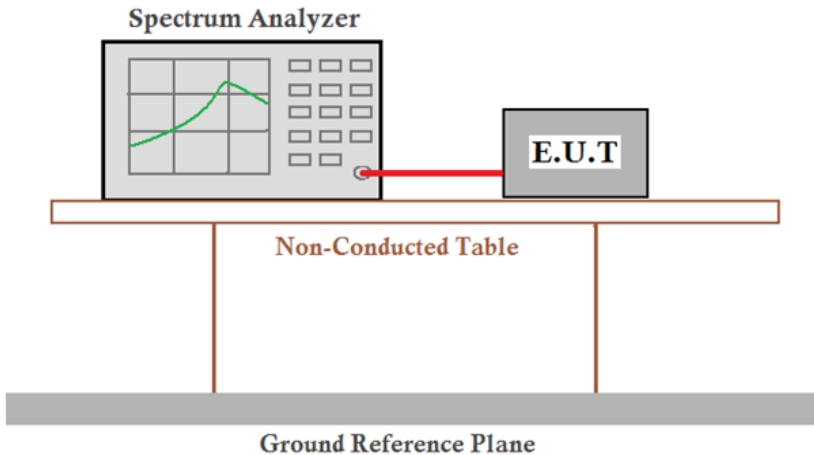
The temporary antenna connector is soldered on the PCB board in order to perform conducted tests and this temporary antenna connector is listed in the equipment list.

## 5 Test results and Measurement Data

### 5.1 Antenna Requirement

<b>Standard requirement:</b>	47 CFR Part 15C Section 15.203 /247(c)
<p>15.203 requirement: An intentional radiator shall be designed to ensure that no antenna other than that furnished by the responsible party shall be used with the device. The use of a permanently attached antenna or of an antenna that uses a unique coupling to the intentional radiator, the manufacturer may design the unit so that a broken antenna can be replaced by the user, but the use of a standard antenna jack or electrical connector is prohibited.</p> <p>15.247(b) (4) requirement: The conducted output power limit specified in paragraph (b) of this section is based on the use of antennas with directional gains that do not exceed 6 dBi. Except as shown in paragraph (c) of this section, if transmitting antennas of directional gain greater than 6 dBi are used, the conducted output power from the intentional radiator shall be reduced below the stated values in paragraphs (b)(1), (b)(2), and (b)(3) of this section, as appropriate, by the amount in dB that the directional gain of the antenna exceeds 6 dBi.</p>	
<b>EUT Antenna:</b>	Please see EUT internal photos.
The antenna is PCB antenna. The best case gain of the antenna is 0dBi.	

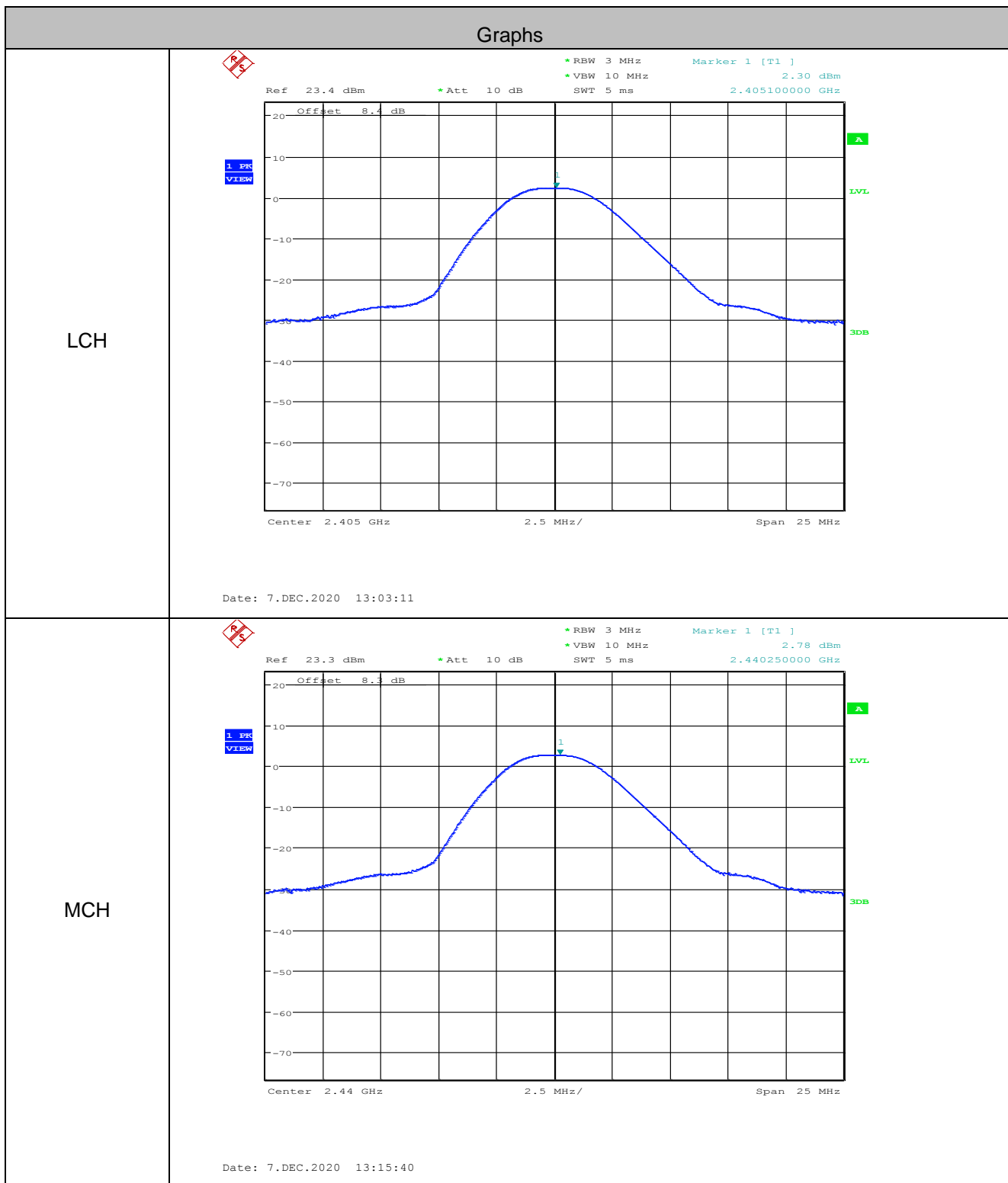
## 5.2 Conducted Peak Output Power

Test Requirement:	47 CFR Part 15C Section 15.247 (b)(3)
Test Method:	ANSI C63.10 2013
Test Setup:	 <p>Remark: Offset=Cable loss+ attenuation factor.</p>
Limit:	30dBm
Test Mode:	Transmitting with O-QPSK at lowest, middle and highest channel.
Test Results:	Pass

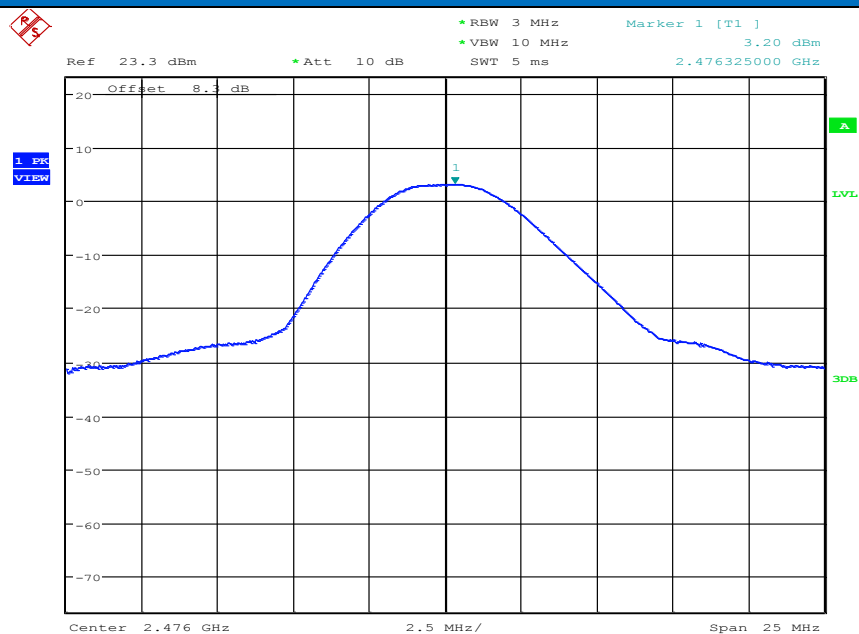
### Measurement Data

O-QPSK mode			
Test channel	Peak Output Power (dBm)	Limit (dBm)	Result
Lowest	2.3	30.00	Pass
Middle	2.78	30.00	Pass
Highest	3.2	30.00	Pass

Test plot as follows:

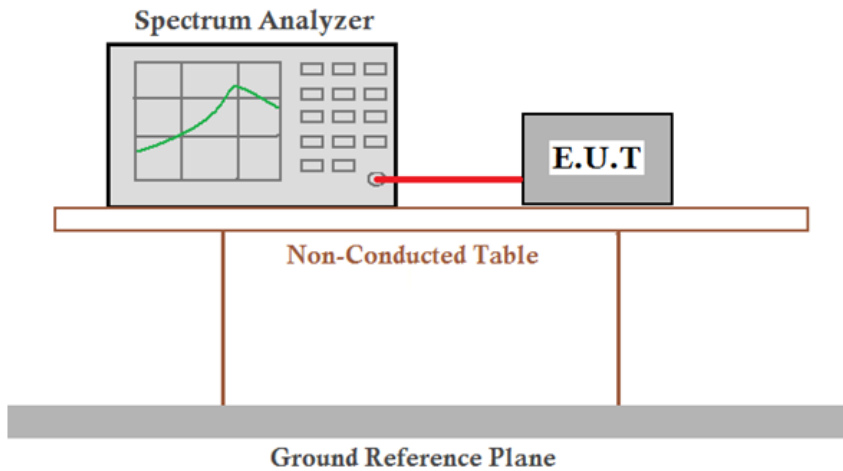


HCH



Date: 7.DEC.2020 13:25:01

### 5.3 6dB Occupy Bandwidth

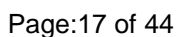
Test Requirement:	47 CFR Part 15C Section 15.247 (a)(2)
Test Method:	ANSI C63.10 2013
Test Setup:	 <p>Remark: Offset=Cable loss+ attenuation factor.</p>
Test Mode:	Transmitting with O-QPSK at lowest, middle and highest channel.
Limit:	$\geq 500$ kHz
Test Results:	Pass

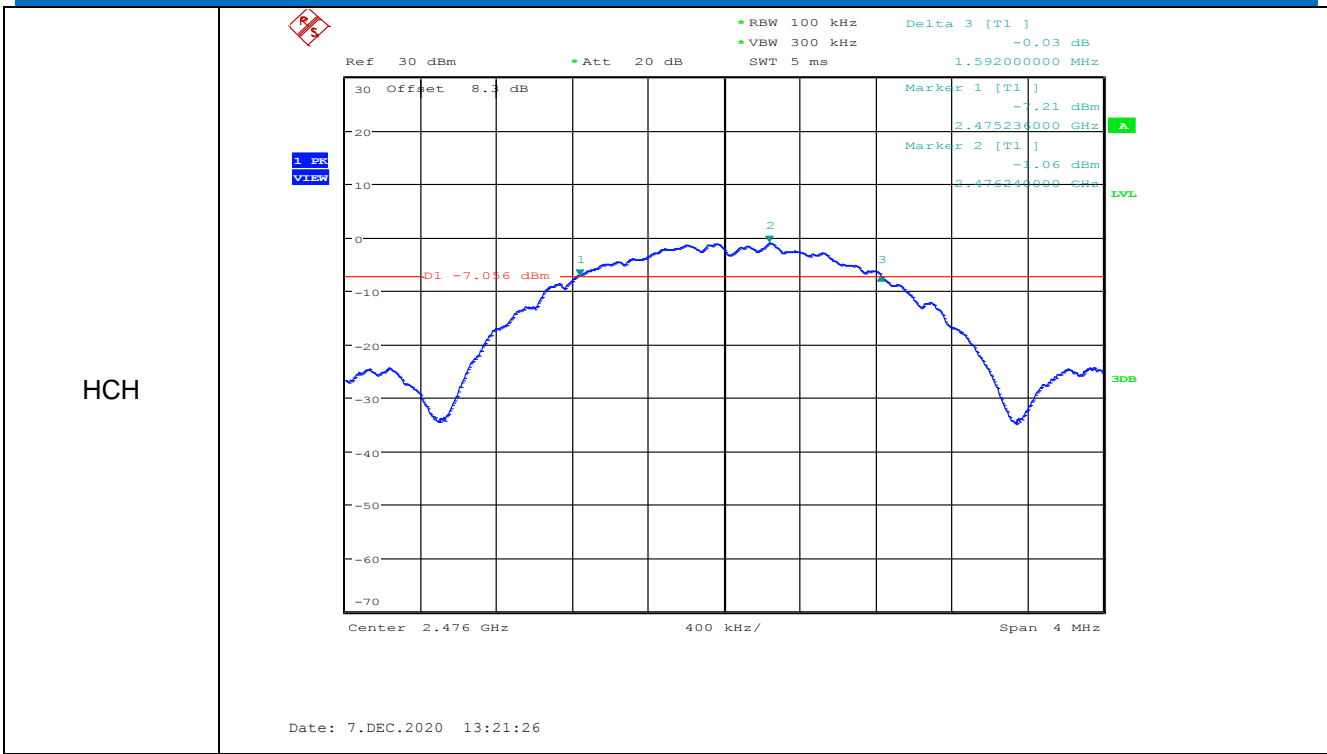
#### Measurement Data

O-QPSK mode			
Test channel	6dB Occupy Bandwidth (MHz)	Limit (MHz)	Result
Lowest	1.600	$\geq 0.5$	Pass
Middle	1.608	$\geq 0.5$	Pass
Highest	1.592	$\geq 0.5$	Pass

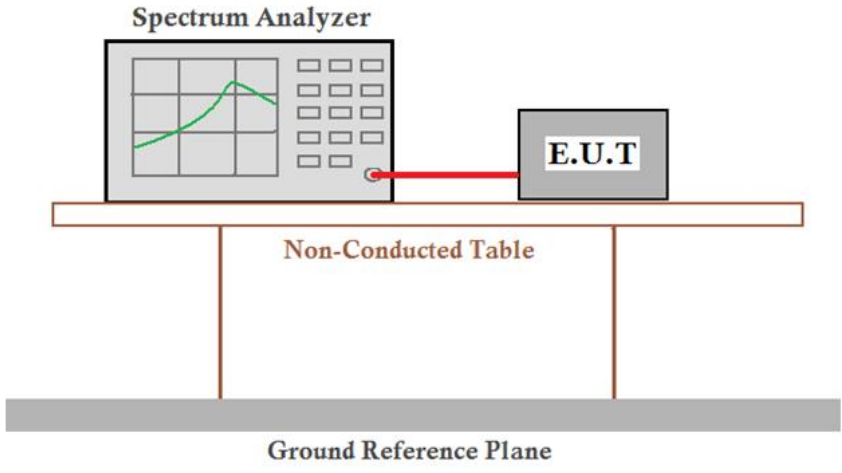


## Graphs





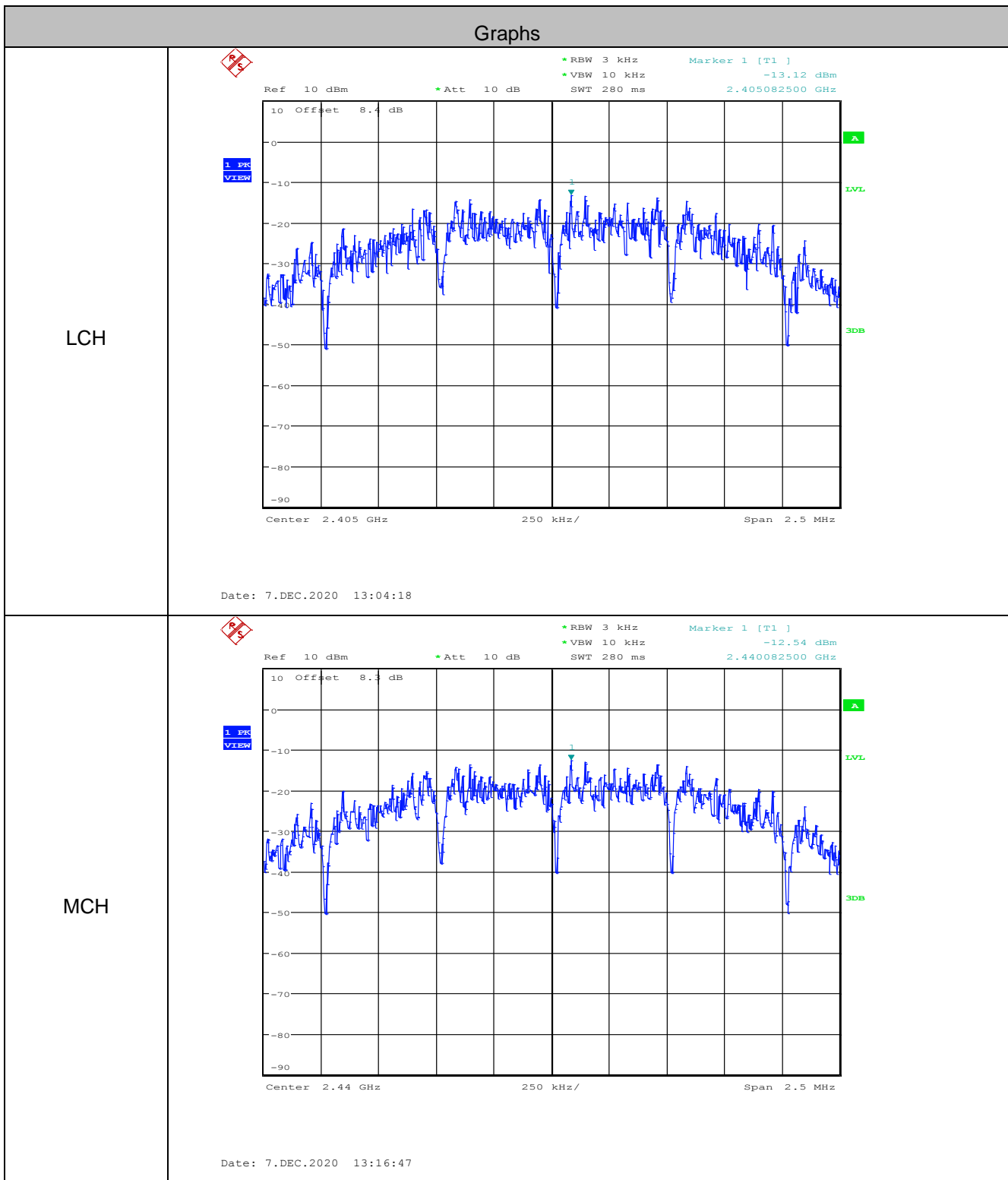
## 5.4 Power Spectral Density

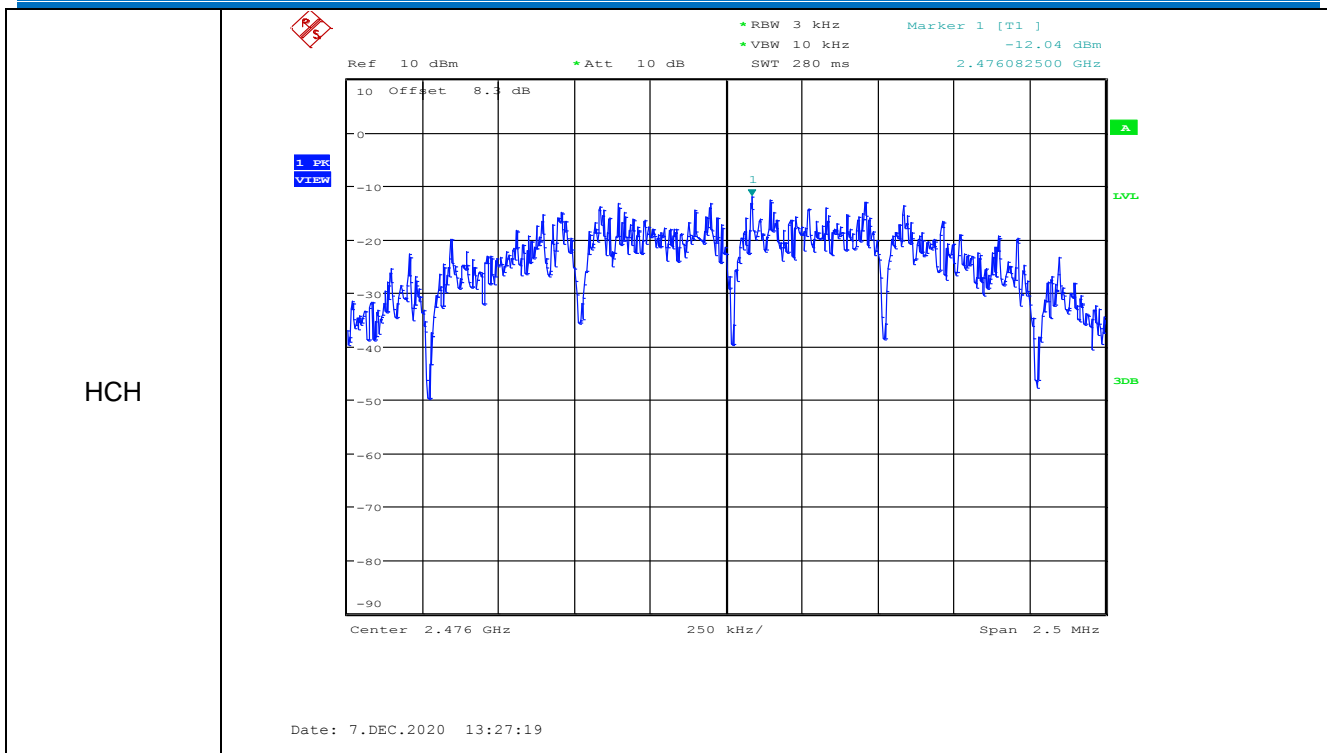
Test Requirement:	47 CFR Part 15C Section 15.247 (e)
Test Method:	ANSI C63.10 2013
Test Setup:	 <p>Remark: Offset=Cable loss+ attenuation factor.</p>
Limit:	≤8.00dBm/3kHz
Test Mode:	Transmitting with O-QPSK at lowest, middle and highest channel.
Test Results:	Pass

### Measurement Data

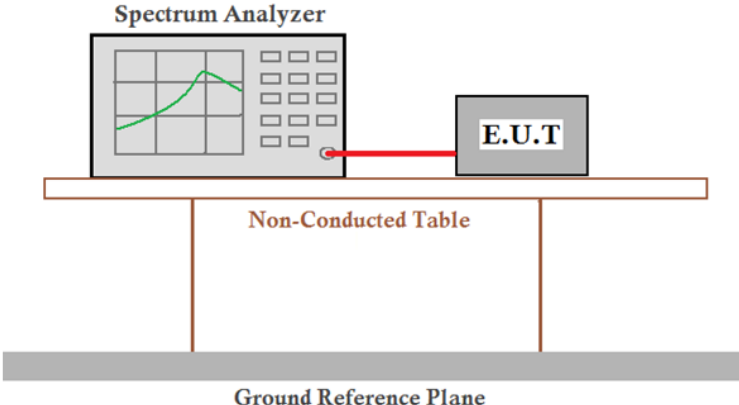
O-QPSK mode			
Test channel	Power Spectral Density (dBm/3kHz)	Limit (dBm/3kHz)	Result
Lowest	-13.120	≤8.00	Pass
Middle	-12.540	≤8.00	Pass
Highest	-12.040	≤8.00	Pass

Test plot as follows:



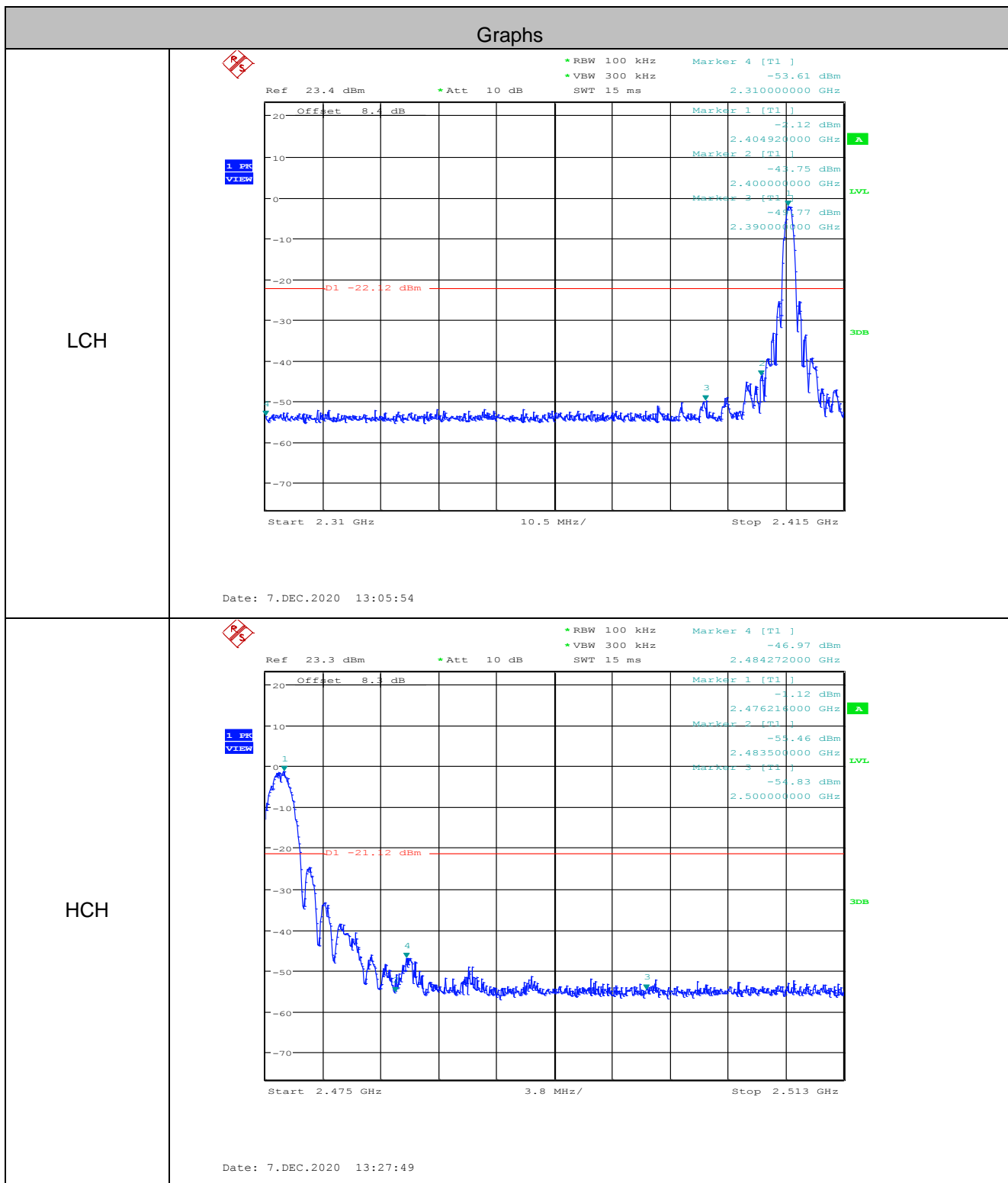


## 5.5 Band-edge for RF Conducted Emissions

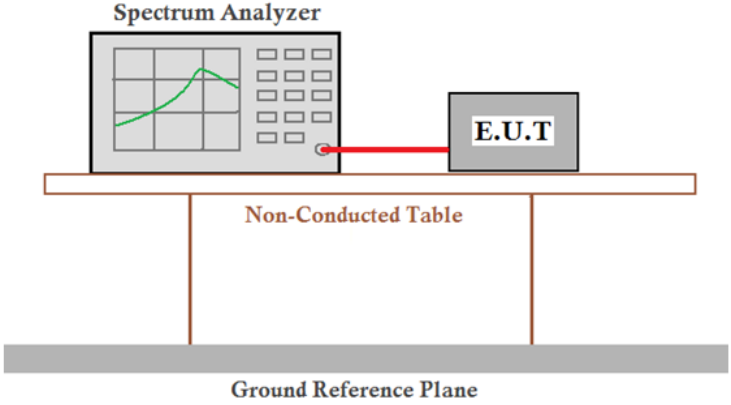
Test Requirement:	47 CFR Part 15C Section 15.247 (d)
Test Method:	ANSI C63.10 2013
Test Setup:	 <p>Remark: Offset=Cable loss+ attenuation factor.</p>
Limit:	In any 100 kHz bandwidth outside the frequency band in which the spread spectrum intentional radiator is operating, the radio frequency power that is produced by the intentional radiator shall be at least 20 dB below that in the 100 kHz bandwidth within the band that contains the highest level of the desired power, based on either an RF conducted or a radiated measurement.
Test Mode:	Transmitting with O-QPSK at lowest, middle and highest channel.
Test Results:	Pass

O-QPSK mode				
Test channel	Frequency(MHz)	Emission Level(dBm)	Limit(dBm)	Result
Lowest	2400	-43.750	-22.12	Pass
Highest	2483.5	-55.460	-21.12	Pass

Test plot as follows:

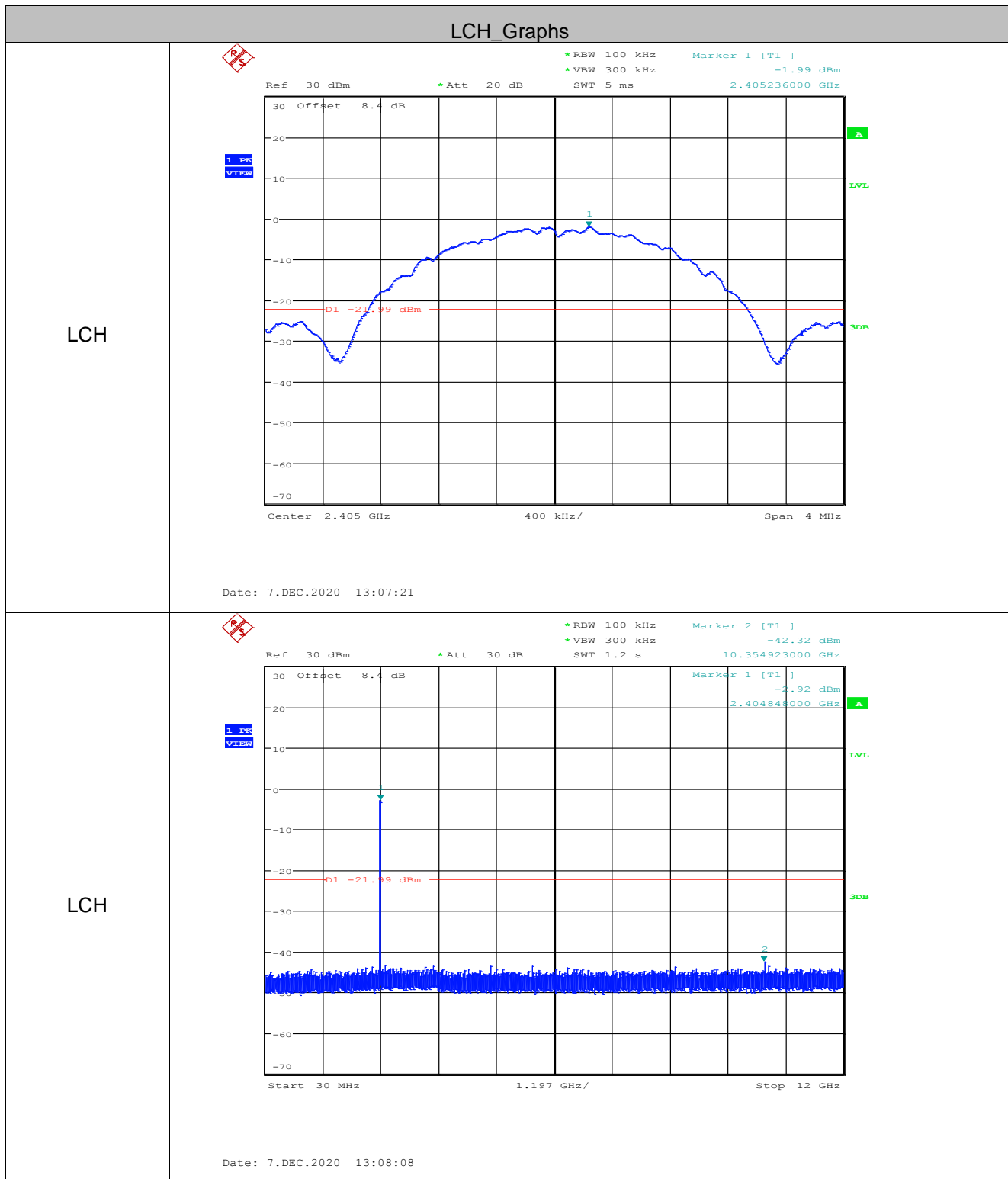


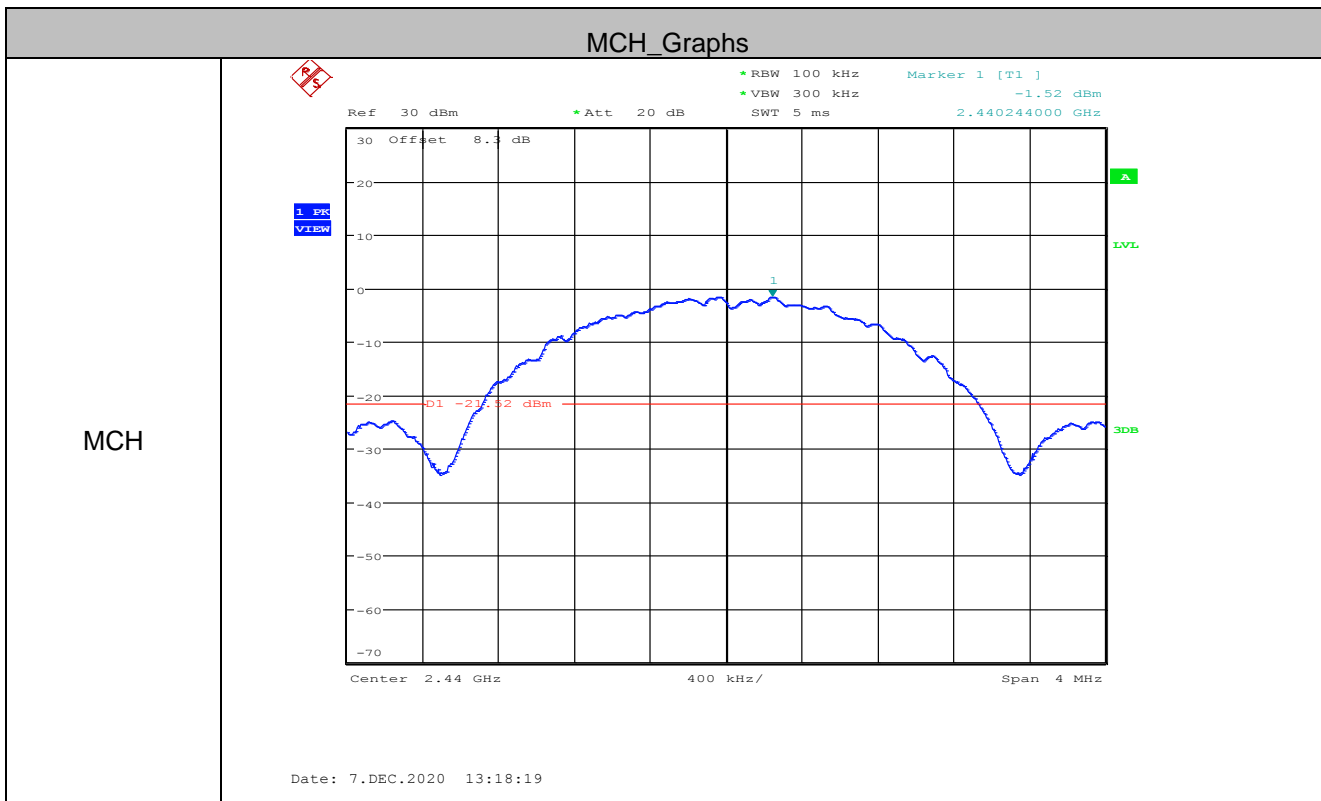
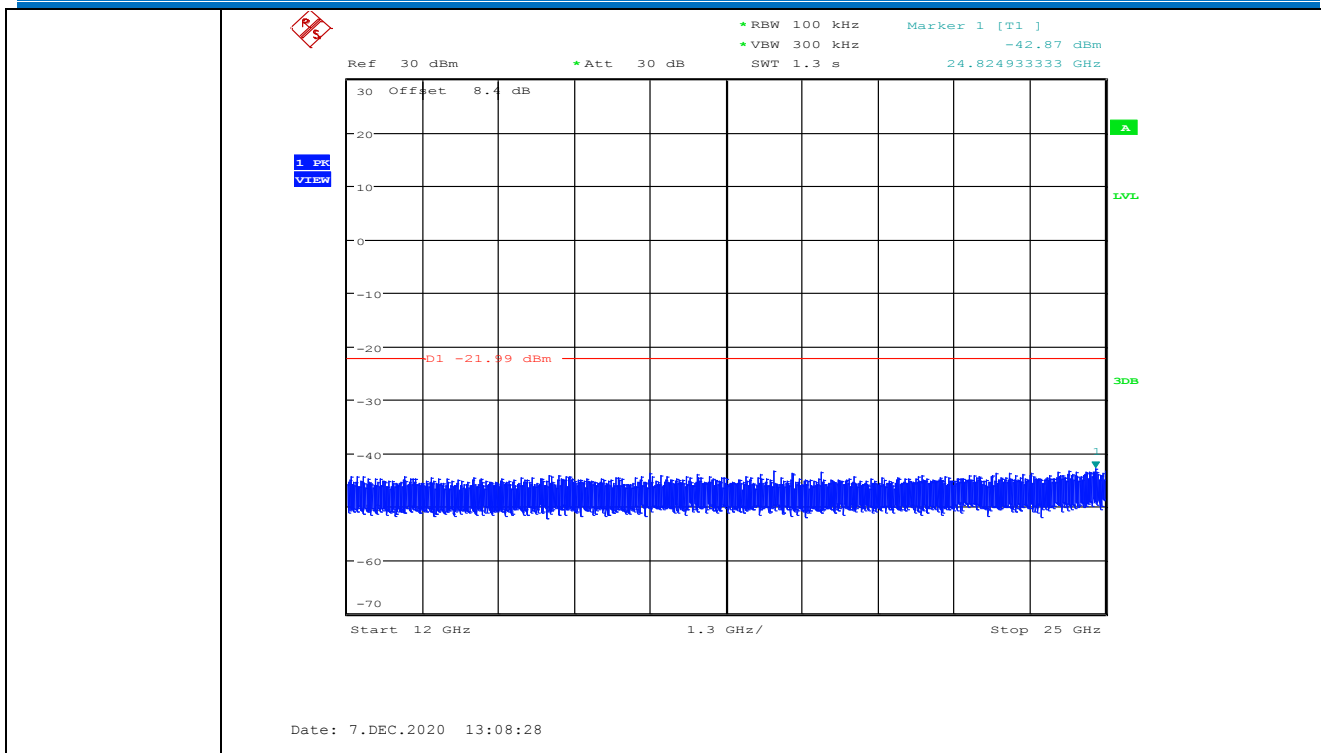
## 5.6 Spurious RF Conducted Emissions

Test Requirement:	47 CFR Part 15C Section 15.247 (d)
Test Method:	ANSI C63.10 2013
Test Setup:	 <p>Remark: <math>\text{Offset} = \text{Cable loss} + \text{attenuation factor}</math>.</p>
Limit:	In any 100 kHz bandwidth outside the frequency band in which the spread spectrum intentional radiator is operating, the radio frequency power that is produced by the intentional radiator shall be at least 20 dB below that in the 100 kHz bandwidth within the band that contains the highest level of the desired power, based on either an RF conducted or a radiated measurement.
Test Mode:	Transmitting with O-QPSK at lowest, middle and highest channel.
Test Results:	Pass

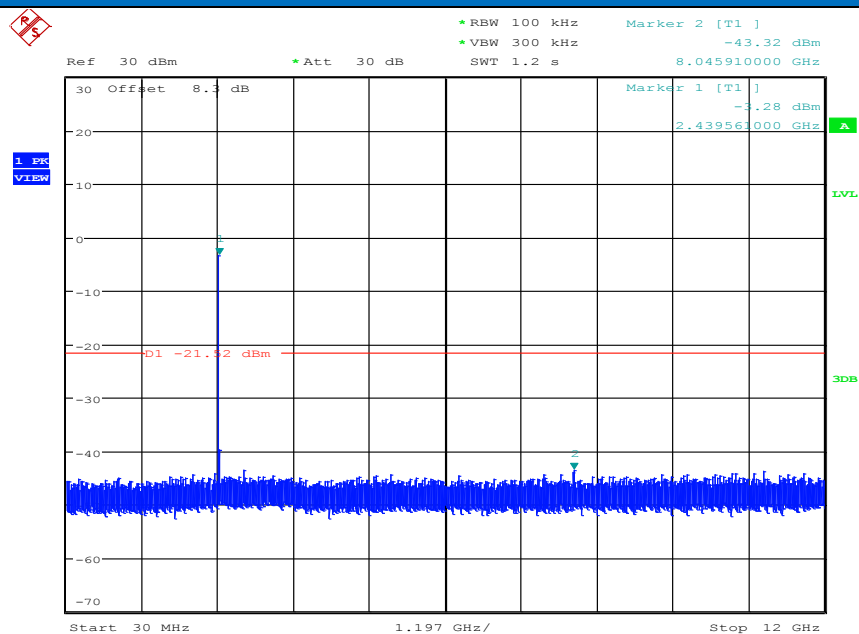


Test plot as follows:

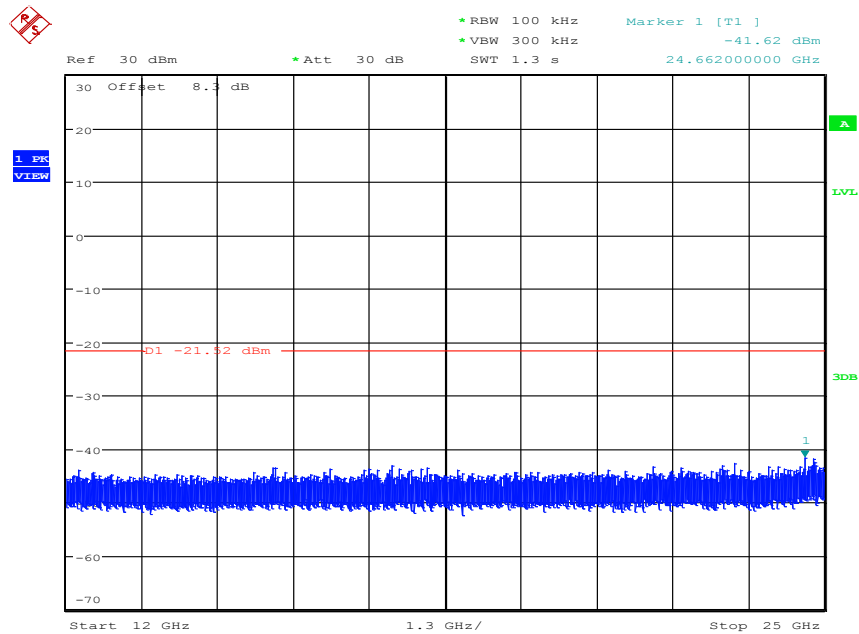




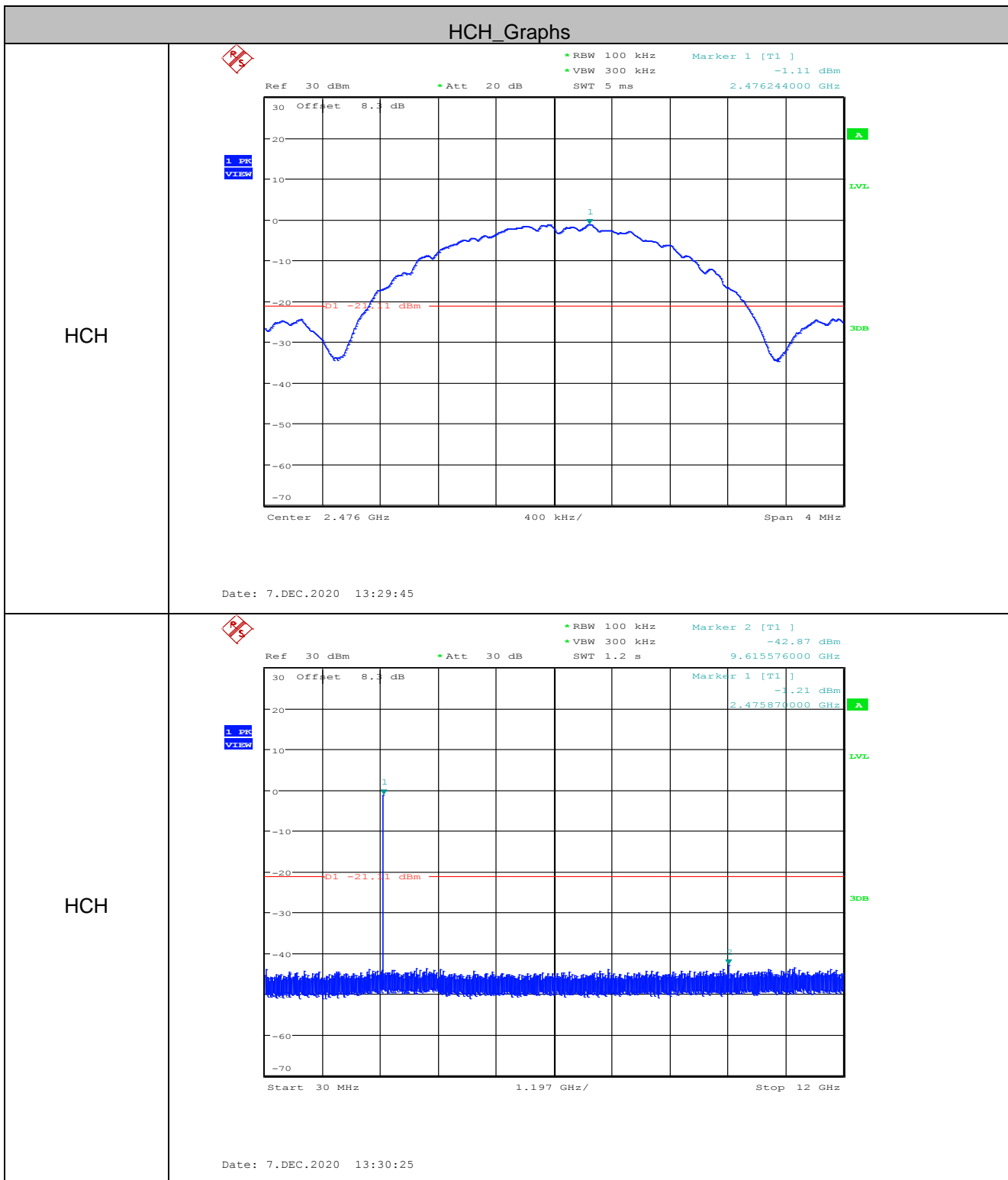
MCH

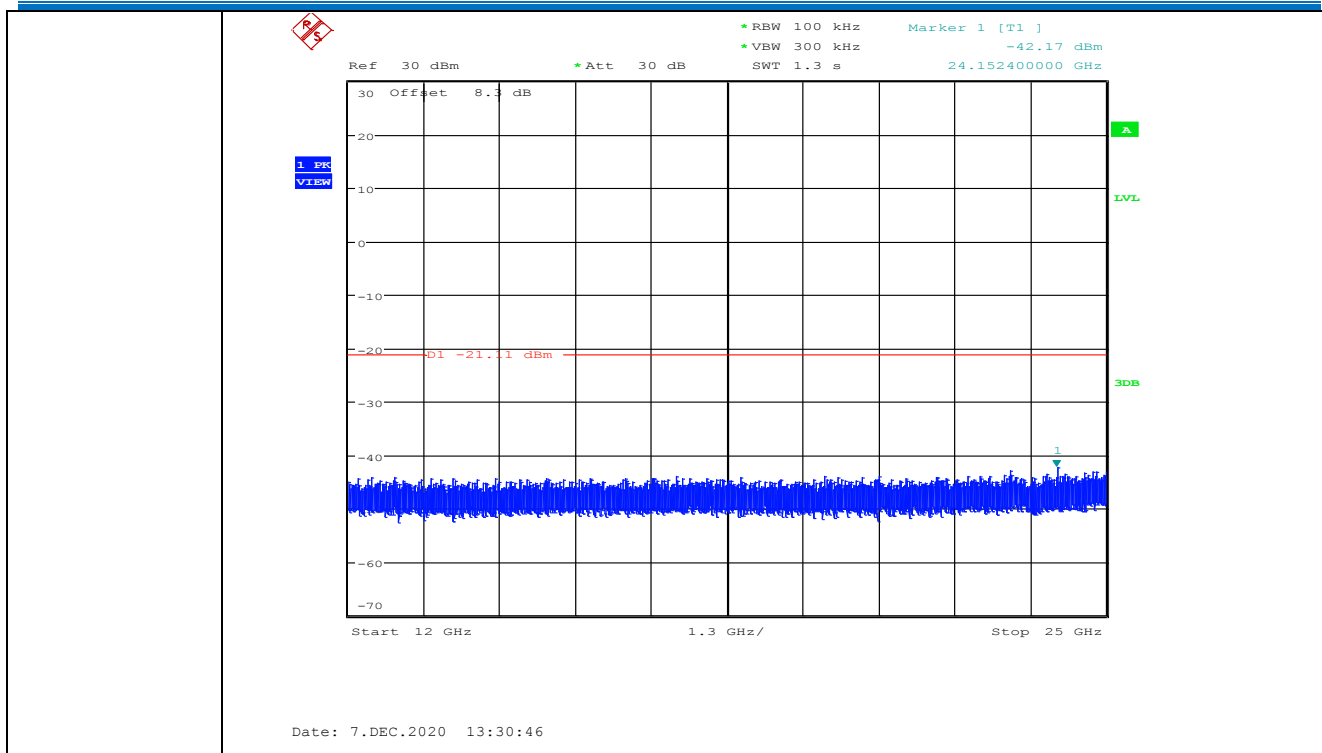


Date: 7.DEC.2020 13:18:43



Date: 7.DEC.2020 13:19:04





Remark:

Pretest 9kHz to 25GHz, find the highest point when testing, so only the worst data were shown in the test report. Per FCC Part 15.33 (a) and 15.31 (o) ,The amplitude of spurious emissions from intentional radiators which are attenuated more than 20 dB below the permissible value need not be reported unless specifically required elsewhere in this part.

## 5.7 Radiated Spurious Emission & Restricted bands

### 5.7.1 Spurious Emissions

Test Requirement:	47 CFR Part 15C Section 15.209 and 15.205				
Test Method:	ANSI C63.10 2013				
Test Site:	Measurement Distance: 3m (Semi-Anechoic Chamber)				
Receiver Setup:	Frequency	Detector	RBW	VBW	Remark
	0.009MHz-0.090MHz	Peak	10kHz	30kHz	Peak
	0.009MHz-0.090MHz	Average	10kHz	30kHz	Average
	0.090MHz-0.110MHz	Quasi-peak	10kHz	30kHz	Quasi-peak
	0.110MHz-0.490MHz	Peak	10kHz	30kHz	Peak
	0.110MHz-0.490MHz	Average	10kHz	30kHz	Average
	0.490MHz -30MHz	Quasi-peak	10kHz	30kHz	Quasi-peak
	30MHz-1GHz	Quasi-peak	100 kHz	300kHz	Quasi-peak
	Above 1GHz	Peak	1MHz	3MHz	Peak
		Peak	1MHz	10Hz <sup>1)</sup>	Average
Limit:	Frequency	Field strength (microvolt/meter)	Limit (dBuV/m)	Remark	Measurement distance (m)
	0.009MHz-0.490MHz	2400/F(kHz)	-	-	300
	0.490MHz-1.705MHz	24000/F(kHz)	-	-	30
	1.705MHz-30MHz	30	-	-	30
	30MHz-88MHz	100	40.0	Quasi-peak	3
	88MHz-216MHz	150	43.5	Quasi-peak	3
	216MHz-960MHz	200	46.0	Quasi-peak	3
	960MHz-1GHz	500	54.0	Quasi-peak	3
	Above 1GHz	500	54.0	Average	3
Note: 15.35(b), Unless otherwise specified, the limit on peak radio frequency emissions is 20dB above the maximum permitted average emission limit applicable to the equipment under test. This peak limit applies to the total peak emission level radiated by the device.					

Test Setup:

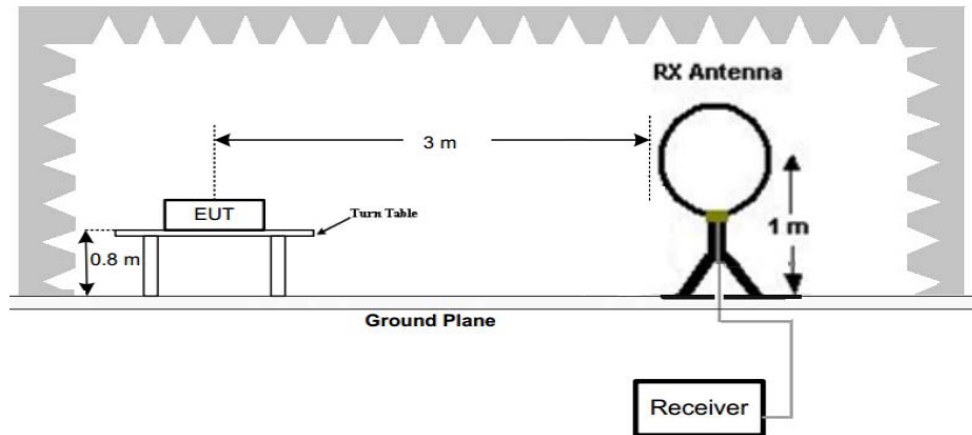


Figure 1. Below 30MHz

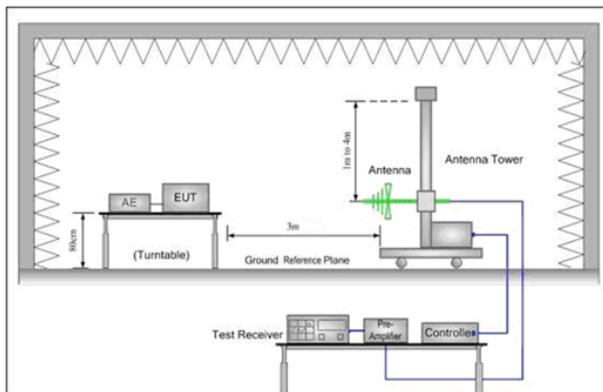


Figure 2. 30MHz to 1GHz

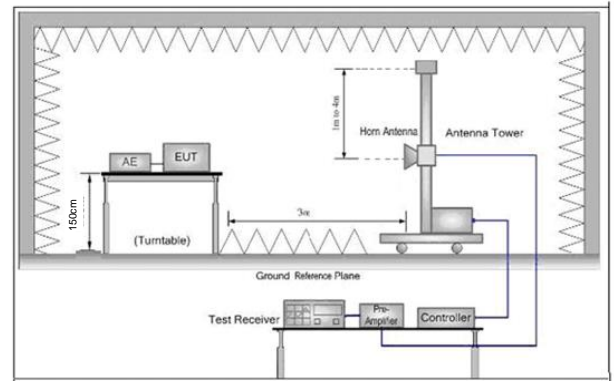


Figure 3. Above 1 GHz

Test Procedure:

- a. 1) Below 1G: The EUT was placed on the top of a rotating table 0.8 meters above the ground at a 3 meter semi-anechoic chamber. The table was rotated 360 degrees to determine the position of the highest radiation.  
2) Above 1G: The EUT was placed on the top of a rotating table 1.5 meters above the ground at a 3 meter semi-anechoic chamber. The table was rotated 360 degrees to determine the position of the highest radiation.  
Note: For the radiated emission test above 1GHz:  
Place the measurement antenna away from each area of the EUT determined to be a source of emissions at the specified measurement distance, while keeping the measurement antenna aimed at the source of emissions at each frequency of significant emissions, with polarization oriented for maximum response. The measurement antenna may have to be higher or lower than the EUT, depending on the radiation pattern of the emission and staying aimed at the emission source for receiving the maximum signal. The final measurement antenna elevation shall be that which maximizes the emissions. The measurement antenna elevation for maximum emissions shall be restricted to a range of heights of from 1 m to 4 m above the ground or reference ground plane.
- b. The EUT was set 3 meters away from the interference-receiving antenna, which was mounted on the top of a variable-height antenna tower.
- c. The antenna height is varied from one meter to four meters above the ground to determine the maximum value of the field strength. Both horizontal and vertical polarizations of the antenna are set to make the

	<p>measurement.</p> <p>d. For each suspected emission, the EUT was arranged to its worst case and then the antenna was tuned to heights from 1 meter to 4 meters (for the test frequency of below 30MHz, the antenna was tuned to heights 1 meter) and the rotatable table was turned from 0 degrees to 360 degrees to find the maximum reading.</p> <p>e. The test-receiver system was set to Peak Detect Function and Specified Bandwidth with Maximum Hold Mode.</p> <p>f. If the emission level of the EUT in peak mode was 10dB lower than the limit specified, then testing could be stopped and the peak values of the EUT would be reported. Otherwise the emissions that did not have 10dB margin would be re-tested one by one using peak, quasi-peak or average method as specified and then reported in a data sheet.</p> <p>g. Test the EUT in the lowest channel (2402MHz),the middle channel (2440MHz),the Highest channel (2480MHz)</p> <p>h. The radiation measurements are performed in X, Y, Z axis positioning for Transmitting mode, and found the X axis positioning which it is the worst case.</p> <p>i. Repeat above procedures until all frequencies measured was complete.</p>
Test Mode:	Transmitting with O-QPSK at lowest, middle and highest channel.
Final Test Mode:	For below 1GHz, through Pre-scan, find at highest channel is the worst case. Only the worst case is recorded in the report.
Test Results:	Pass



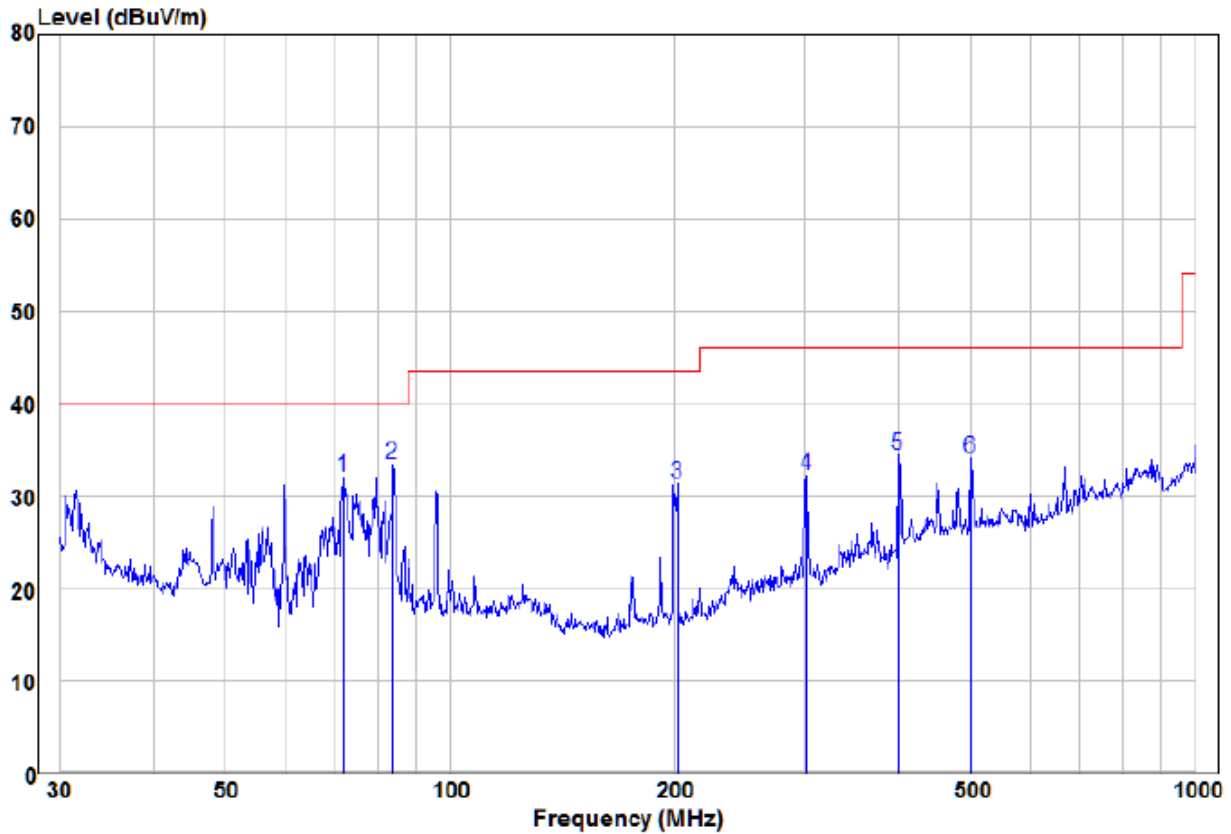
Radiated Emission below 1GHz

30MHz~1GHz, the worst case

Test mode:

Transmitting mode

Vertical



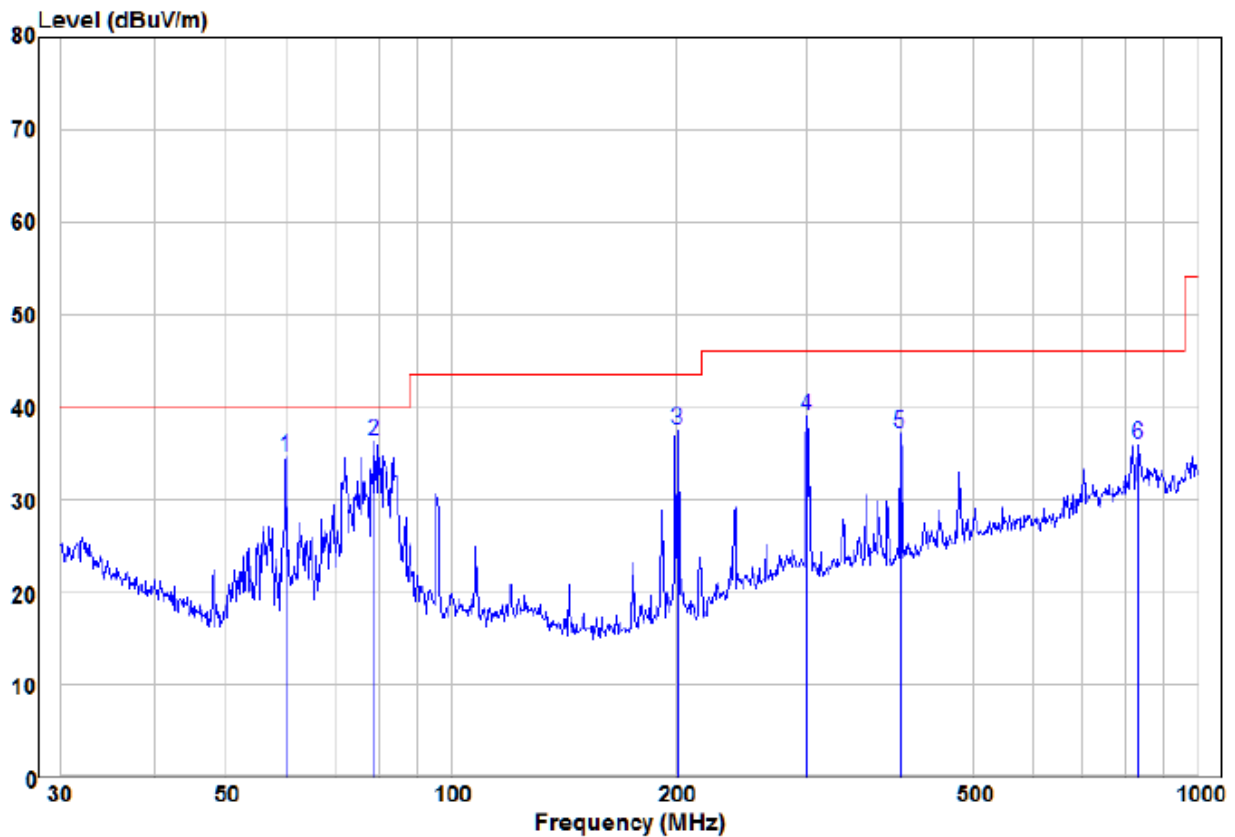
	Freq	Read Level	Factor	Level	Limit Line	Over Limit	Remark	Pol/Phase
	MHz	dBuV	dB/m	dBuV/m	dBuV/m	dB		
1	72.08	23.62	8.49	32.11	40.00	-7.89	QP	VERTICAL
2	pp 83.82	23.53	9.88	33.41	40.00	-6.59	QP	VERTICAL
3	201.39	22.92	8.53	31.45	43.50	-12.05	QP	VERTICAL
4	301.42	18.48	13.76	32.24	46.00	-13.76	QP	VERTICAL
5	399.03	19.25	15.13	34.38	46.00	-11.62	QP	VERTICAL
6	499.42	15.85	18.26	34.11	46.00	-11.89	QP	VERTICAL

30MHz~1GHz, the worst case

Test mode:

Transmitting mode

Horizontal



	Freq	Read Level	Factor	Level	Limit Line	Over Limit	Remark	Pol/Phase
	MHz	dBuV	dB/m	dBuV/m	dBuV/m	dB		
1	60.07	29.66	5.04	34.70	40.00	-5.30	QP	HORIZONTAL
2 pp	78.97	26.75	9.61	36.36	40.00	-3.64	QP	HORIZONTAL
3	200.69	29.08	8.51	37.59	43.50	-5.91	QP	HORIZONTAL
4	299.32	25.40	13.71	39.11	46.00	-6.89	QP	HORIZONTAL
5	399.03	22.10	15.13	37.23	46.00	-8.77	QP	HORIZONTAL
6	833.32	12.01	23.97	35.98	46.00	-10.02	QP	HORIZONTAL

Transmitter Emission above 1GHz

Test mode:		O-QPSK		Test channel:		Lowest	
Frequency	Meter Reading	Factor	Emission Level	Limits	Over	Detector Type	Ant. Pol.
(MHz)	(dBμV)	(dB)	(dBμV/m)	(dBμV/m)	(dB)		H/V
<b>2390</b>	<b>53.55</b>	<b>-9.2</b>	<b>44.35</b>	<b>74</b>	<b>-29.65</b>	<b>Peak</b>	<b>H</b>
2400	57.21	-9.39	47.82	74	-26.18	Peak	H
4860	54.10	-4.33	49.77	74	-24.23	Peak	H
7290	51.05	1.01	52.06	74	-21.94	Peak	H
<b>2390</b>	<b>52.80</b>	<b>-9.2</b>	<b>43.60</b>	<b>74</b>	<b>-30.40</b>	<b>Peak</b>	<b>V</b>
2400	50.76	-9.39	41.37	74	-32.63	Peak	V
4860	53.25	-4.33	48.92	74	-25.08	Peak	V
7290	50.62	1.01	51.63	74	-22.37	Peak	V

Test mode:		O-QPSK		Test channel:		Middle	
Frequency	Meter Reading	Factor	Emission Level	Limits	Over	Detector Type	Ant. Pol.
(MHz)	(dBμV)	(dB)	(dBμV/m)	(dBμV/m)	(dB)		H/V
4880	51.87	-4.11	47.76	74	-26.24	peak	H
7320	48.99	1.51	50.50	74	-23.50	peak	H
4880	52.34	-4.11	48.23	74	-25.77	peak	V
7320	49.44	1.51	50.95	74	-23.05	peak	V

Test mode:		O-QPSK		Test channel:		Highest	
Frequency	Meter Reading	Factor	Emission Level	Limits	Over	Detector Type	Ant. Pol.
(MHz)	(dBμV)	(dB)	(dBμV/m)	(dBμV/m)	(dB)		H/V
<b>2483.5</b>	<b>56.87</b>	<b>-9.29</b>	<b>47.58</b>	<b>74</b>	<b>-26.42</b>	<b>Peak</b>	<b>H</b>
4952	52.98	-4.05	48.93	74	-25.07	Peak	H
7425	48.65	1.56	50.21	74	-23.79	Peak	H
<b>2483.5</b>	<b>57.39</b>	<b>-9.29</b>	<b>48.10</b>	<b>74</b>	<b>-25.90</b>	<b>Peak</b>	<b>V</b>
4960	51.34	-4.05	47.29	74	-26.71	Peak	V
7440	50.40	1.56	51.96	74	-22.04	Peak	V

Remark:

- The field strength is calculated by adding the Antenna Factor, Cable Factor & Preamplifier. The basic equation with a sample calculation is as follows:  
Final Test Level = Receiver Reading + Antenna Factor + Cable Factor – Preamplifier Factor
- Scan from 9kHz to 25GHz, the disturbance above 10GHz and below 30MHz was very low. As shown in this section, for frequencies above 1GHz, the field strength limits are based on average limits. However, the peak field strength of any emission shall not exceed the maximum permitted average limits specified above by more than 20 dB under any condition of modulation. So, only the peak measurements were shown in the report.

## 6 Photographs - EUT Test Setup

### 6.1 Radiated Spurious Emission

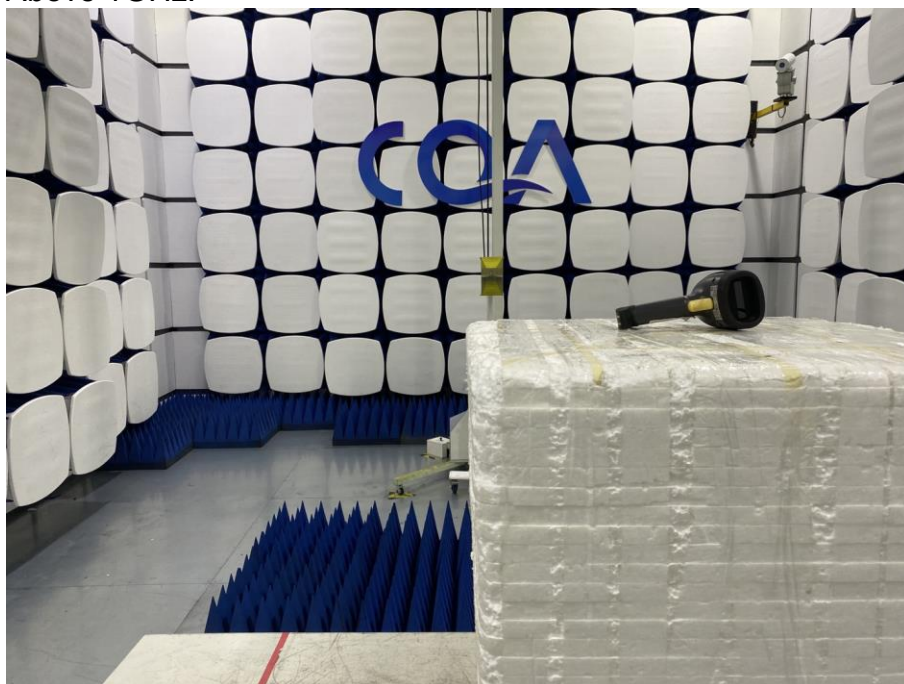
9kHz~30MHz:



30MHz~1GHz:



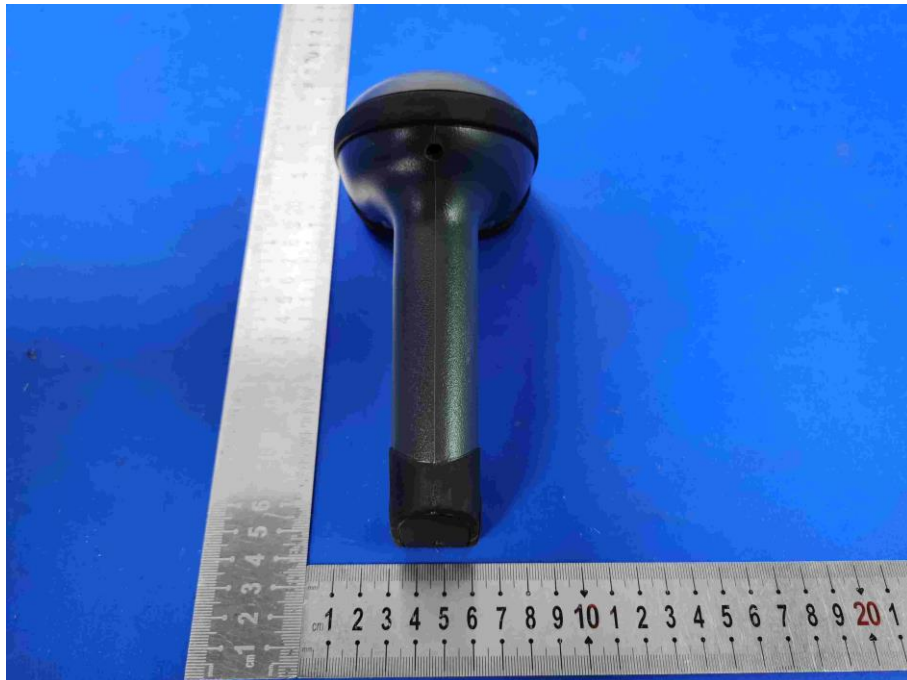
Above 1GHz:





## 7 Photographs - EUT Constructional Details

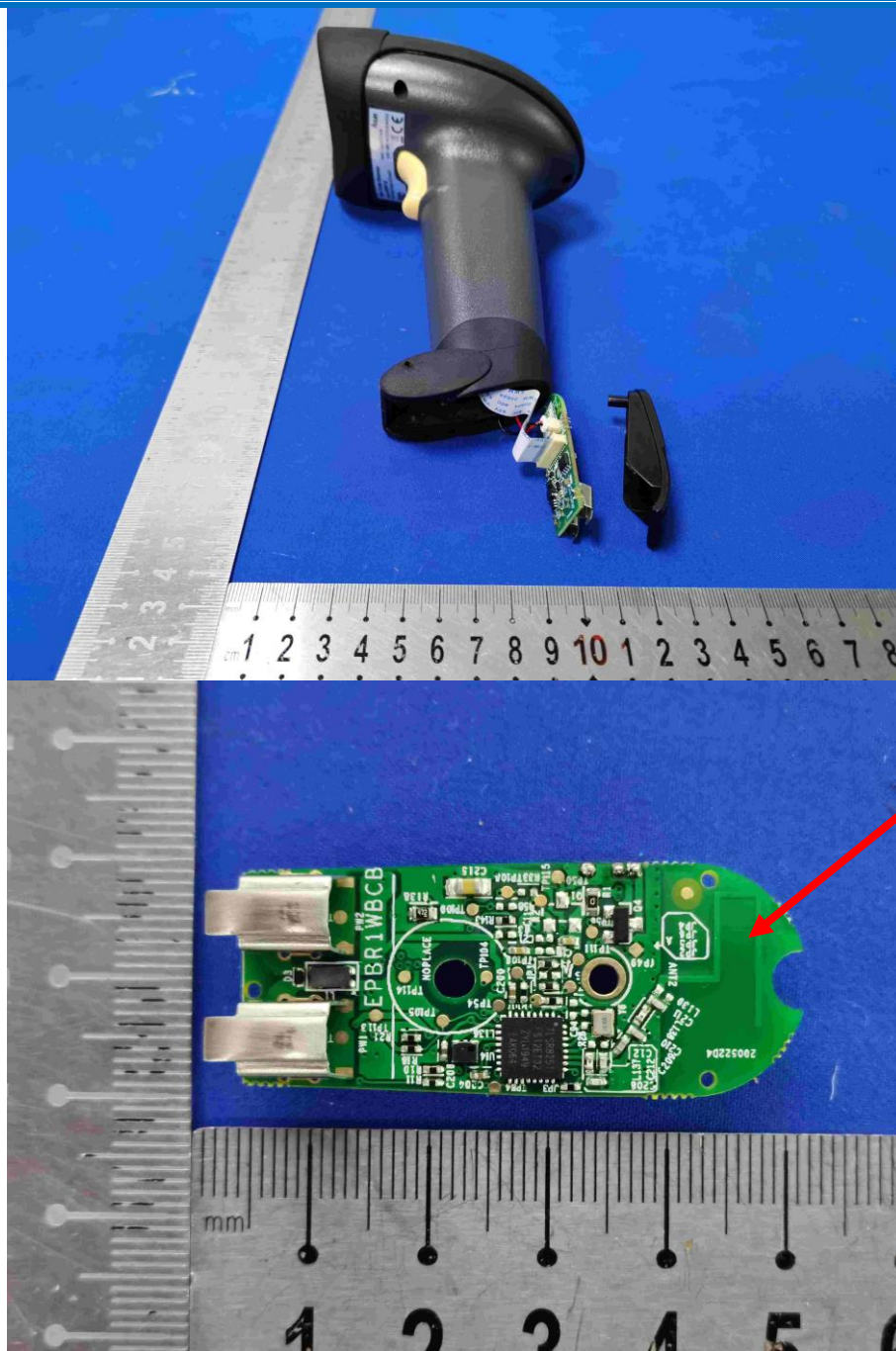
Test Model No.: BR1X



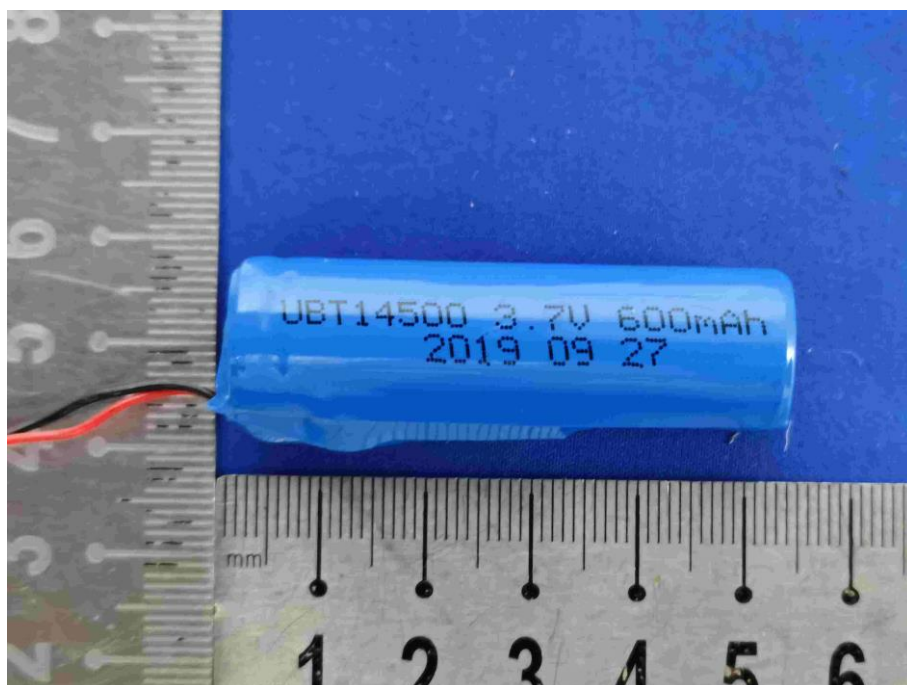
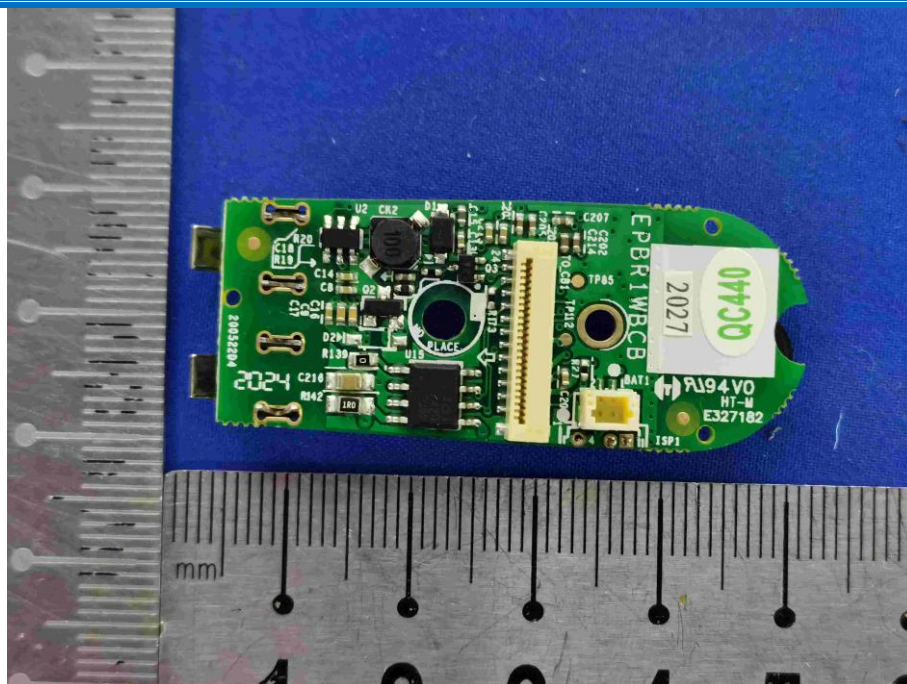


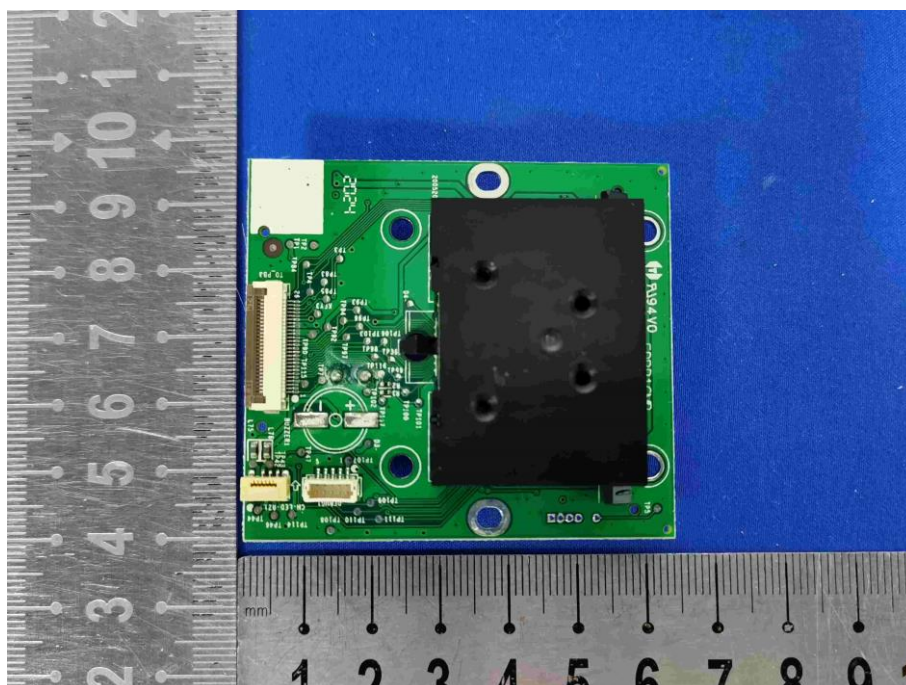




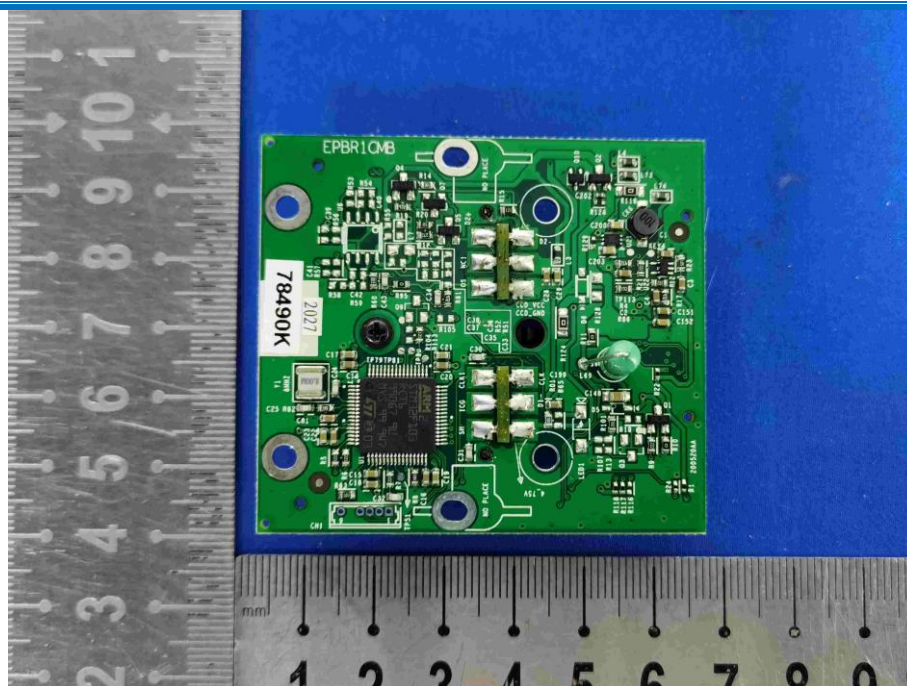


BT ANT









The End