

# **POCSAG Personal Transmitter 11-67-0000**

## **Users Manual**

**Also covers SALCOM products 1143, 1170 and 1187**

- 1.0 DESCRIPTION:** The SALCOM POCSAG Personal Transmitter is a simple to use, compact hand held paging message transmitter. The unit has four buttons, with which any one of four user definable paging messages can be sent to a pocket pager or any paging message receiver. Each message can be Tone Only, Numeric or Alphanumeric, and can be repeated from 1 to 99 times.

The unit runs from a user replaceable 9v alkaline battery, giving an operational life of over 1000 messages.

The user can program the content of the messages using SALCOM product support software and accompanying interface adaptor.

A small LED on the front panel shows transmission and inter-transmission breaks.

- 2.0 WARRANTY:** Our Products are warranted for a period of 12 months from date of purchase against faulty materials and workmanship. Should any fault occur the unit should be returned to the vendor, freight pre-paid. Please include a description of the fault to assist with prompt return.

Any unauthorized alterations or repairs will invalidate the warranty.

- 3.0 DISCLAIMER:** All information provided in this document is carefully prepared and offered in good faith as a guide in the installation, use and servicing of our products. Users must ensure that the final application satisfies the relevant regulatory requirements. We accept no responsibility for inappropriate application.

We reserve the right to change product and specifications data at any time, without notice.

**CAUTION:** Changes or modifications not expressly approved by the party responsible for compliance could void the user's authority to operate the equipment.

## 4.0 SPECIFICATIONS

TRANSMITTER	
Nominal frequency band	140 - 162MHz
Output (into 50ohms)	+18dBm "2dB
Spurious outputs	-30dBc max. Conducted test
MESSAGE PARAMETERS	
Number of messages	4
For each of the four messages:-	
RIC code	7 digit (codes 0 to 2097151)
Message type	Tone, Numeric, Alphanumeric
Function levels	1,2,3 or 4
Length of message	0 to 70 characters
Baud rate	512 or 1200 bps
Transmission count	1 to 99
Delay between transmission retries	1 to 99 seconds
Common message	0 to 35 characters
ID number storage	4 numeric characters
GENERAL	
Battery type	9v Alkaline (12v A23 for 1143)
Low battery threshold voltage	7 volts (9v for 1143)
Environment protection standard	IP443
Weight	56 grams
Size	64mm x 26mm x 130mm

**5.0 OPERATION:** The 11-67 is operated by pressing one of the four buttons on the front panel. Each button must be held down for half a second before transmission commences to allow for accidental presses. Transmission is indicated by the TX LED illuminating.

If transmission retries have been selected, the unit will go into a wait period between transmissions indicated by the TX LED flashing faintly. Cessation of transmissions is indicated by the TX LED going off completely.

A number of factors can influence the range of the unit. The range can be optimised by applying the following rules:

1. Ensure the path between transmitter and receiver is as clear from obstructions as possible.
2. Do not mount the unit on metal surfaces.
2. Replace batteries when they become exhausted.
3. If handheld, hold the unit in the open with one hand as far from the body as possible.
4. Some pocket pager receivers do not respond as well as fixed receivers with external aerials

**6.0 LOW BATTERY INDICATION:** The transmitted output power and range of the unit will decrease as the battery becomes exhausted. The TX lamp flashing when any button is pressed indicates low battery voltage. For optimum performance, the battery should be replaced as soon as possible after the flashing lamp is observed. The battery can recover slightly if the unit is left without a button being pressed for a period, and the next time a button is pressed, it may not flash. Do not consider this a reason not to replace the battery.

**7.0 BATTERY REPLACEMENT:** Remove the cover from the rear of the unit. Replace the battery with the designated type ensuring the polarity is correct and the connector contacts are tight. If the battery is inserted backwards, the unit will not be damaged, but it will not function. Ensure that the TX lamp lights when a button is pressed and check for any ingress of dirt into the case.

Note: The 1143 product requires the front cover to be removed to change the battery.

**7.1 BATTERY TYPE:** The table below shows the correct battery type for the various product variants.

Product	Type	Voltage	Type Number
1167, 1170, 1187	Alkaline	9 volts	MN1604, 6LR61
1143	Alkaline	12 volts	A23

**8.0 PROGRAMMING:** The 1167 can be programmed using an IBM™ compatible personal computer, a SALCOM 1146 serial adapter and the SALCOM 1143PSD programming software.

**8.1 Loading the program:** The program is loaded and run according to the instructions supplied with the software.

- 8.2 Serial adaptor:** The serial adaptor is plugged into a serial port (com1). Once the program is running, the default configuration can be opened from disk or the existing 1167 configuration can be read via the serial adapter (if connected to the 1167 - see 8.4) and edited.
- 8.3 Edit menu:** Under the EDIT menu, each button has a separate window, allowing the parameters of each buttons' transmission to be changed. A fifth edit window allows the user to add a unit ID number, and inset a common message which will be added to the start of every transmission. This can be made to reflect the Unit ID and hence identify the unit from its transmission.
- 8.4 Attaching the serial adaptor to the 11-67:** Remove the back cover of the 1167 and plug the head of the serial adaptor into the four pin connector. To preserve battery life, the head should only be connected during programming or reading of the unit. Correct connection of the adaptor is confirmed by periodic flashing of the TX LED, and a "Connect" message at the bottom right corner of the screen.
- 8.5 The existing configuration:** This can be read from the unit by connecting the serial adaptor head and using the READ option.
- 8.6 New configurations:** These can be programmed into the 1167 by connecting the serial adaptor head and using the PROGRAM option, and stored on disk for future reference by using the FILES SAVE command.
- 8.7 Context specific HELP:** This can be obtained at any time by pressing F1 on the keyboard.
- 8.8 Testing a new configuration:** Test by disconnecting the serial adaptor head, and pressing any of the buttons on the unit.

## **9.0 PRODUCTION VARIANTS:**

SALCOM 1170-0000 is a one button version of the 1167-0000

SALCOM 1187-0000 has the same function as the 11-67, but has a more efficient helical aerial to improve radio range.

SALCOM 1143-0000 is a small pocket sized version with membrane push buttons and an internal loop aerial.

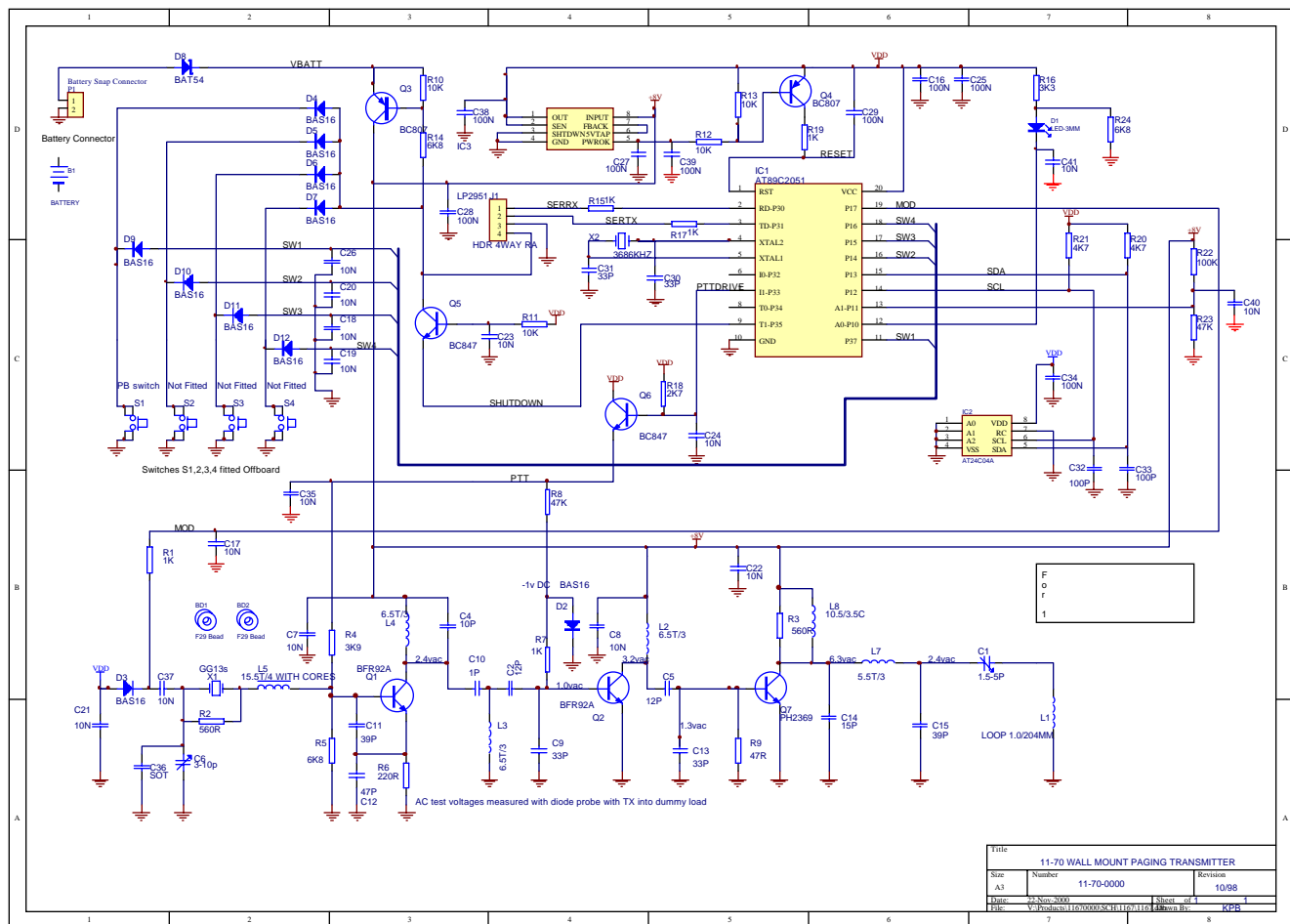


Figure 1 Circuit diagram