

## **E. PHOTOGRAPHS-SC-280 A**

With Battery (SCB-2200)

- 1) Model view of SC-280 A – Front Three- Quarter View 1
- 2) Model view of SC-280 A – Front Three- Quarter View 2
- 3) Model view of SC-280 A – Back view
- 4) Model view of SC-280 A – Back view (Label Position)
- 5) Model view of SC-280 A – Top view
- 6) Model view of SC-280 A – Bottom view
- 7) Model view of SC-280 A – Belt clip 1
- 8) Model view of SC-280 A – Belt clip 2
- 9) MAIN PCB of SC-280 A (Component Side View)
- 10) MAIN PCB of SC-280 A (Solder Side View)

1) Model view of SC-280 A – Front Three- Quarter View 1



2) Model view of SC-280 A – Front Three- Quarter View 2



3) Model view of SC-280 A – Back view



4) Model view of SC-280 A – Back view (Label Position)



5) Model view of SC-280 A – Top view



6) Model view of SC-280 A – Bottom view



7) Model view of SC-280 A – Belt clip 1





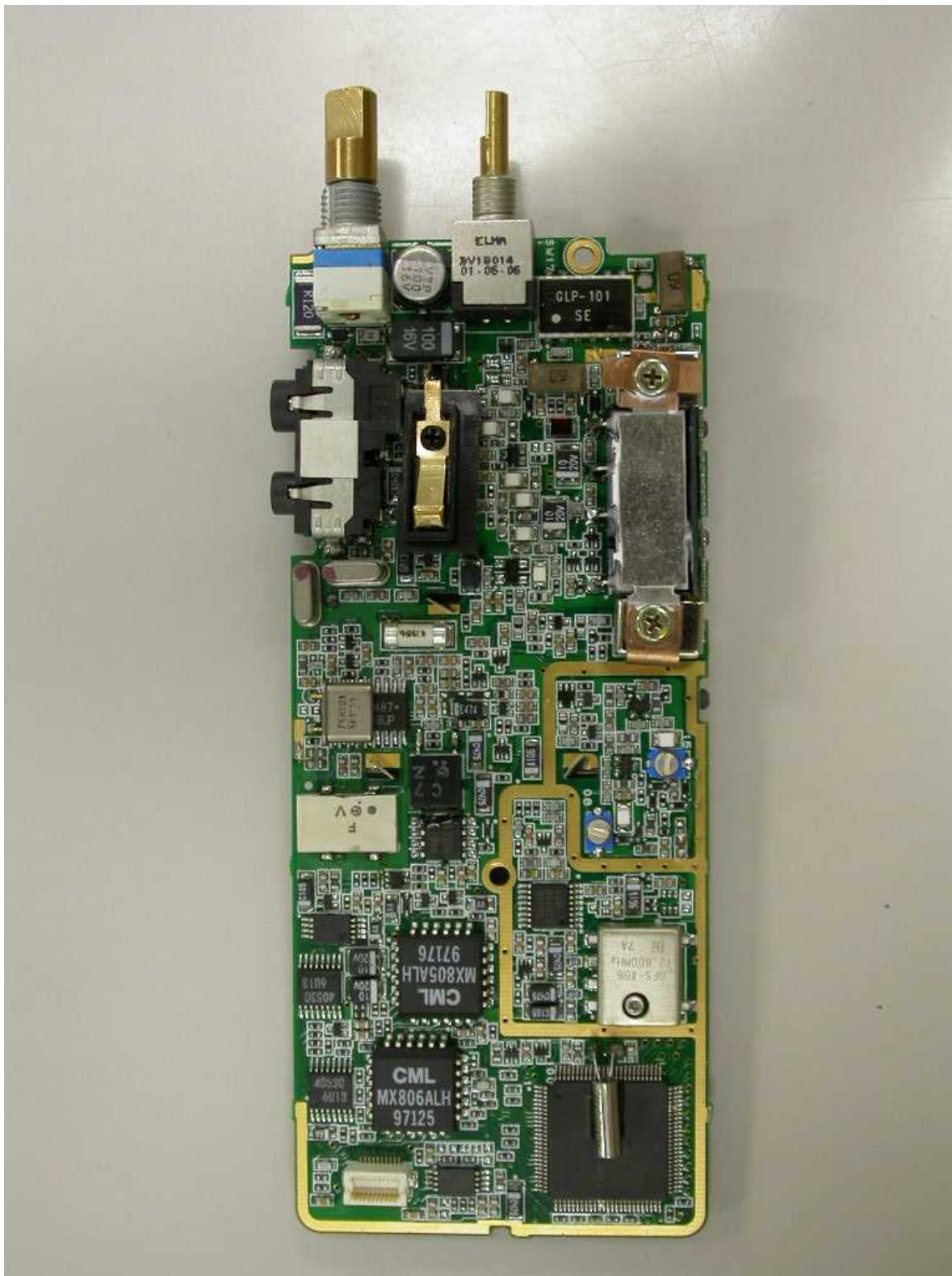
8) Model view of SC-280 A – Belt clip 2



9) MAIN PCB of SC-280 A (Component Side View)



10) MAIN PCB of SC-280 A (Solder Side View)



## **E. PHOTOGRAPHS-SC-280 A**

With Battery (SCB-4000)

- 1) Model view of SC-280 A – Front Three- Quarter View 1
- 2) Model view of SC-280 A – Front Three- Quarter View 2
- 3) Model view of SC-280 A – Back view
- 4) Model view of SC-280 A – Top view
- 5) Model view of SC-280 A – Bottom view
- 6) Model view of SC-280 A – Belt clip 1
- 7) Model view of SC-280 A – Belt clip 2

1) Model view of SC-280 A – Front Three- Quarter View 1



2) Model view of SC-280 A – Front Three- Quarter View 2



3) Model view of SC-280 A – Back view





4) Model view of SC-280 A – Top view





5) Model view of SC-280 A – Bottom view



6) Model view of SC-280 A – Belt clip 1



7) Model view of SC-280 A – Belt clip 2

