

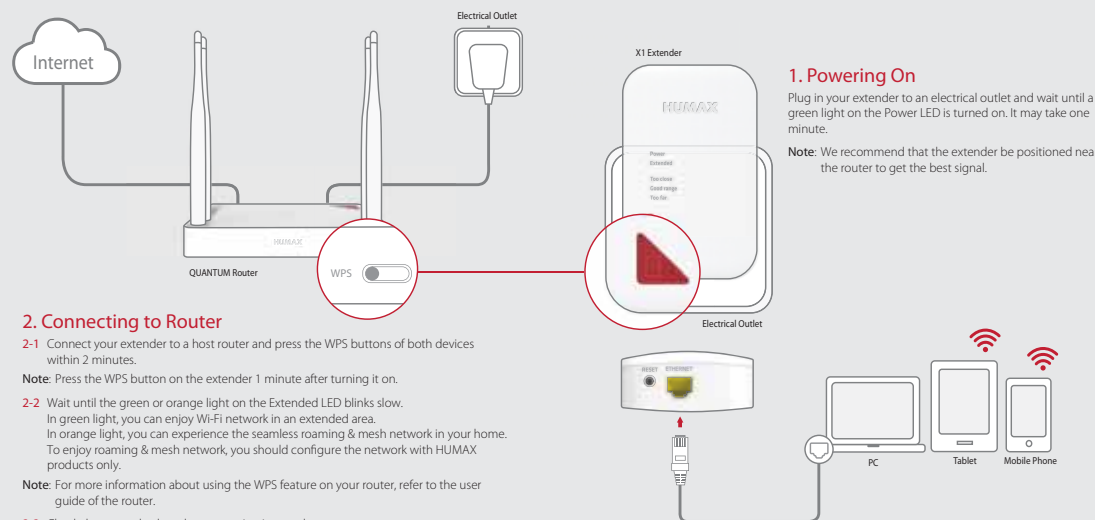
Quick Start Guide

Wireless or Wired, it's 11n Wireless Roaming Extender

QUANTUM X1

Warning

1. Connect all devices before you plug any power cords into the electrical outlet.
2. Always turn off the product and network devices before you connect or disconnect any cables.
3. Hazardous electrical voltages can exist on the product and peripheral devices and can be present on any connected cables.



2. Connecting to Router

2-1 Connect your extender to a host router and press the WPS buttons of both devices within 2 minutes.

Note: Press the WPS button on the extender 1 minute after turning it on.

2-2 Wait until the green or orange light on the Extended LED blinks slow. In green light, you can enjoy Wi-Fi network in an extended area. In orange light, you can experience the seamless roaming & mesh network in your home. To enjoy roaming & mesh network, you should configure the network with HUMAX products only.

Note: For more information about using the WPS feature on your router, refer to the user guide of the router.

2-3 Check the network when the connection is complete.

If you connect the extender to a HUMAX router, both network names are the same as if they configure a single network. But, if you use a router other than HUMAX products, the network name of your extender will copy the routers name following Ext2G or Ext5G. (ex. Router_Ext5G)

1. Powering On

Plug in your extender to an electrical outlet and wait until a green light on the Power LED is turned on. It may take one minute.

Note: We recommend that the extender be positioned near the router to get the best signal.

- **WPS:** Press the WPS button to activate the wireless protected setup.
- **RESET:** Keep pressing the reset button for 5 seconds and release it if all LEDs are blink.
- **ETHERNET:** Connect your smart TV, gaming console or PC.

3. Relocating Extender

Place your extender about halfway between your router and Wi-Fi dead zone.

Plug the extender into an electrical outlet and wait until the Good Range LED lights green.

Note: If a green light on the Too Close or Too Far LEDs is turned on, move the extender far from or closer to the router until the Good Range LED lights green.

LEDs on the Front Panel

After the product is successfully registered on the network, the LEDs illuminate continuously to indicate that the product is active and fully operational.

LED		Operation	
Power	Green On	Power is on.	
	Off	Power is off.	
Extended	Extender	Green On	WPS Connection between router and extender is in progress.
		Green Fast Blinking	WPS Connection between router and extender is failed. It blinks for 2 minutes.
		Green Slow Blinking	WPS connection between router and extender is successful. It blinks for 5 seconds.
	Roaming & Mesh	Orange On	Synchronization over smart roaming & mesh network is successful.
		Orange Fast Blinking	WPS connection between router and extender is failed.
		Orange Slow Blinking	WPS connection between router and extender is successful.
Too Close	Green On	Wireless network signal is strong. Move a client device far from the product.	
Good Range	Green On	Wireless network signal is good.	
Too Far	Green On	Wireless network signal is weak. Move a client device closer to the product.	
Extended, Too Close, Good Range, Too Far Blinking		Resetting the system is in progress.	

Note:

- Orange light is turned on when your product operates over the roaming & mesh network.
- You can turn the LEDs off if the notification is not needed. Go to **Management > Energy Saving > LED Controls** to turn the LEDs on or off.

FCC warning:

Any Changes or modifications not expressly approved by the party responsible for compliance could void the user's authority to operate the equipment.

This device complies with part 15 of the FCC Rules. Operation is subject to the following two conditions: (1) This device may not cause harmful interference, and (2) this device must accept any interference received, including interference that may cause undesired operation.

FCC Radiation Exposure Statement:

This equipment complies with FCC radiation exposure limits set forth for an uncontrolled environment. This equipment should be installed and operated with minimum distance 20cm between the radiator& your body. This transmitter must not be co-located or operating in conjunction with any other antenna or transmitter.

Note: This equipment has been tested and found to comply with the limits for a Class B digital device, pursuant to part 15 of the FCC Rules. These limits are designed to provide reasonable protection against harmful interference in a residential installation. This equipment generates uses and can radiate radio frequency energy and, if not installed and used in accordance with the instructions, may cause harmful interference to radio communications. However, there is no guarantee that interference will not occur in a particular installation. If this equipment does cause harmful interference to radio or television reception, which can be determined by turning the equipment off and on, the user is encouraged to try to correct the interference by one or more of the following measures:

- Reorient or relocate the receiving antenna.
- Increase the separation between the equipment and receiver.
- Connect the equipment into an outlet on a circuit different from that to which the receiver is connected.
- Consult the dealer or an experienced radio/TV technician for help.



Scan the QR code
to access @@ on your mobile device.

Setting up on Web Page

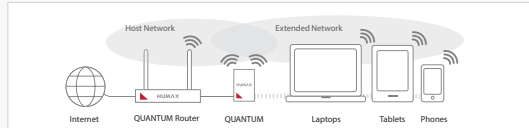
If you want to set the extender in more detail, you can set it up on your PC or mobile device.

1 Connecting Network Devices

Wirelessly connect your network devices to the extender.

Note: You need a network name and password of the extender.

Or, you can connect your PC to the LAN port of your extender through an Ethernet cable.



2 Login to the Web

1. Open the web browser.
2. Enter <http://dearmyrouter.net> to the address bar, and then press the Enter key.
3. Enter the ID and password. The default ID and password are admin and nnnn. nnnn is the last 4 digits of serial number. Refer to the serial number at the bottom of your product.

Note: We recommend you to change the ID and password to secure your network. Go to **Management > Change Password** to change your password.

3 Welcome

If you configure the network with **HUMAX products** only, click **HUMAX Products** and go to **4-1. Roaming & Mesh**.

If you use a third party product other than **HUMAX**, click **Other Products** and go to **4-2 Repeater**.

4-1 Roaming & Mesh

Just press the WPS buttons on HUMAX products within 1 second. Then, they are connected each other automatically, and configure the mesh network. You will experience seamless Wi-Fi roaming over the mesh network.

4-2. Repeater

If you have a networking device other than HUMAX products, select it from the list and then enter the password. You will experience stronger and wider Wi-Fi signal.

Click **Next** to set the connection with the host router.

If you click **WPS** to connect to the host router automatically, **5. Extender Setting** page does not appear.

Network Name (SSID)	CH	RSSI	Security	MAC Address	Band
IPTime_Zone	1	-45	WPA2-PSK	BC76707C3C74	2.4GHz
TIANA_B9	1	-47	WPA2-PSK	F8D1115C348A	2.4GHz
ASUS	1	-51	WPA2-PSK	707CF8D11155	2.4GHz
Wufya	3	-26	None	115C54D83398	2.4GHz

5 Extender Setting

Enter your network name and password. The default name is the same as your host network.

Note: We recommend the network share the same network name and password as your host network if you configure the network with HUMAX products only.

6 WPS Connection

Click **Start WPS** to configure WPS between your router and extender. When the WPS is successfully configured, the green or orange light on the Extended LED blinks slowly.

Note: You can see whether the WPS connection is successful or not on the Extender Setting page.

Setting up on Mobile

Login to the Mobile web

1. Open the web browser on your mobile device. If the web page does not appear, enter <http://dearmyrouter.net> to the address bar.
2. Enter the ID and password. The default ID and password are admin and nnnn. nnnn is the last 4 digits of serial number. Refer to the serial number at the bottom of your product.

Note: We recommend you to change the ID and password to secure your network. Go to **Management > Change Password** to change your password.

Connection to Host

3. Tap **SCAN**.
4. Select a host network from the list and enter the password.

Extender Setting

5. Enter your network name and password. The default name is the same as your host network.

Note: We recommend the network share the same network name and password as your host network if you configure the network with HUMAX products only.

WPS Configuration

6. Click **WPS** to configure WPS between your router and extender. When the WPS is successfully configured, the green or orange light on the Extended LED blinks slowly.