



FCC CERTIFICATION  
Report No: E01.0608.FCC.241.N  
FCC ID : O6JWHF-7020S

## Appendix H. User Manual

---

# Contents

Thank you for purchasing @hanzoom™ ,  
900MHz Cordless Internet Phone.  
Please read this manual thoroughly before using it.

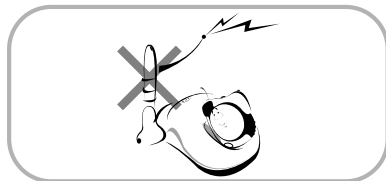


<b>Information</b>	<b>3</b>
Cautions	3
About @hanzoom™	4
PC System Requirements / Features	5
Unit Contents	6
<b>Installation</b>	<b>7</b>
Phone Installation	7
Program Installation	11
Program Uninstallation	13
Program Running	14
User Interface Setting	15
<b>Operation</b>	<b>18</b>
Regular Phone	18
Internet Phone	31
Additional Functions	33
<b>Troubleshooting</b>	<b>35</b>
Regular Phone	35
Internet Phone	37
<b>Specification</b>	<b>39</b>

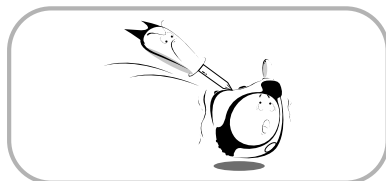
## Cautions



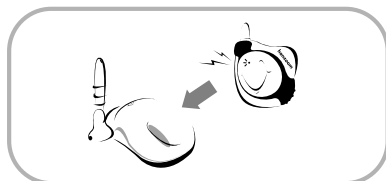
- Do not apply heat or direct impact.



- Do not connect other antenna to the base station.



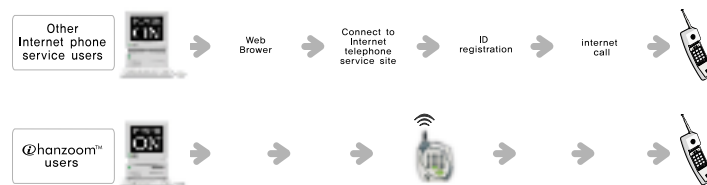
- Do not attempt to disassemble.



- Remember to recharge the battery by putting it on the base station after the red light is on. Otherwise, the battery can be damaged by over-discharge.

## About *i*hanzoom™

@hanzoom™ makes it possible to use free or low-cost long distance and international calls through the internet VoIP gateway simply by connecting its base with a computer. The current internet phones require several complicated and repetitive procedures to be performed such as executing web browser and ID registration. In contrast to them, @hanzoom™ automatically executes those procedures simply by pushing cordless telephone buttons. Even users unfamiliar with PC or internet can use free or low-cost internet calls conveniently. It also allows consumers a choice between ordinary regular phone service and internet calls by pressing a button on the phone. Our dual-mode telephone provides user-friendly and cost-effective services.



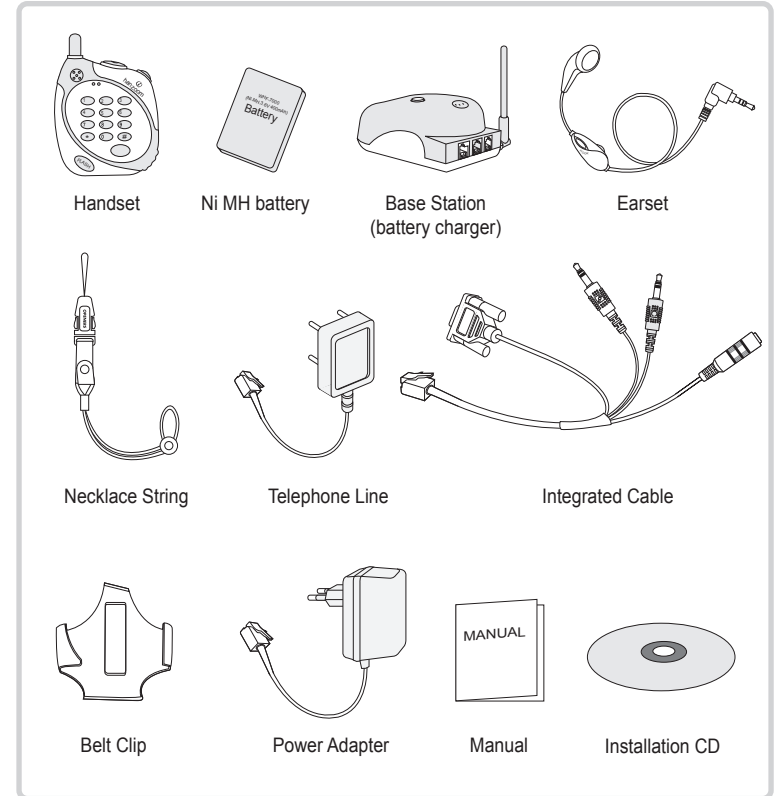
## PC System Requirements

- Pentium MMX 166 or over
- 32 MB RAM or over
- 100MB HDD or over
- MS Windows 95/98/NT
- MS Internet Explorer 5.01 or over
- Microsoft Virtual Machine (latest version)
- Windows Media Player 6.4 or over
- Sound Blaster compatible / Full-Duplex sound card
- Internet connection via ADSL/ISDN/LAN

## Features

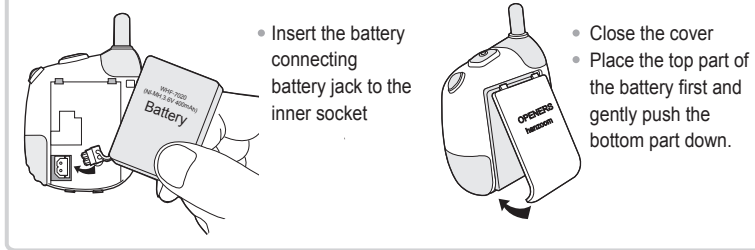
- 900MHz cordless internet phone that enables FREE or low-cost internet calls  
(Member registration to an Internet telephony service site is required)
- Dual-mode cordless telephone that offers both internet calls and ordinary regular phone service simply by pressing a button on the phone
- Listening to MP3 music via MP3 player S/W
- Listening to radio programs via internet
- Voice checking of e-mail arrivals
- Hands-free function
- Ultra compact design and light weight

## Unit Contents



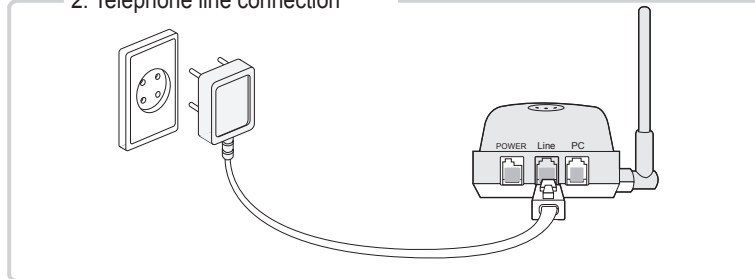
## Phone Installation

### 1. Placing a battery



- Make sure to charge the battery for more than 12 hours before using the phone.

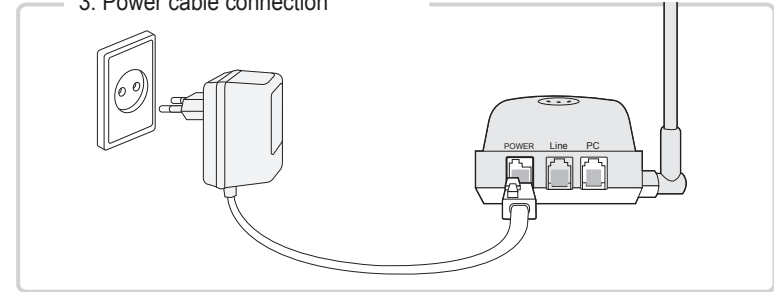
### 2. Telephone line connection



- Plug the telephone line (PSTN line) into telephone outlet, and connect the jack to "LINE" at the back side of a base station

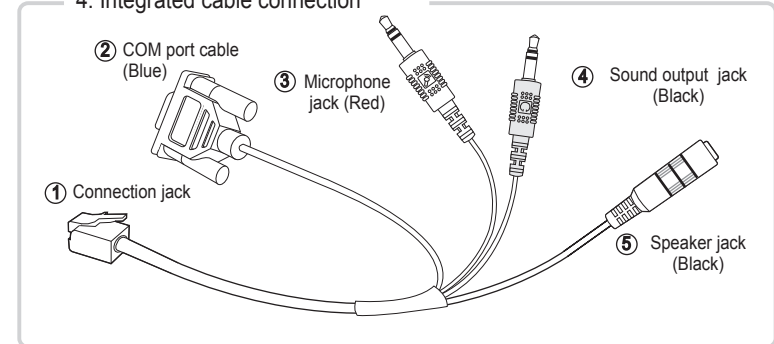
## Phone Installation

### 3. Power cable connection



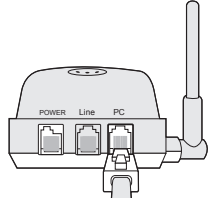
- Plug the power adapter into power outlet, and connect the jack to the "POWER" at the back side of the base station.

### 4. Integrated cable connection

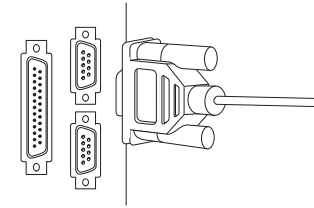


## Phone Installation

### 4. Integrated cable connection

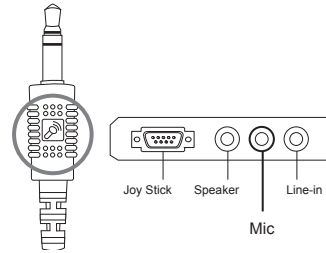


- ① Put the connection jack of the cable into the "PC" at the backside of the base station.



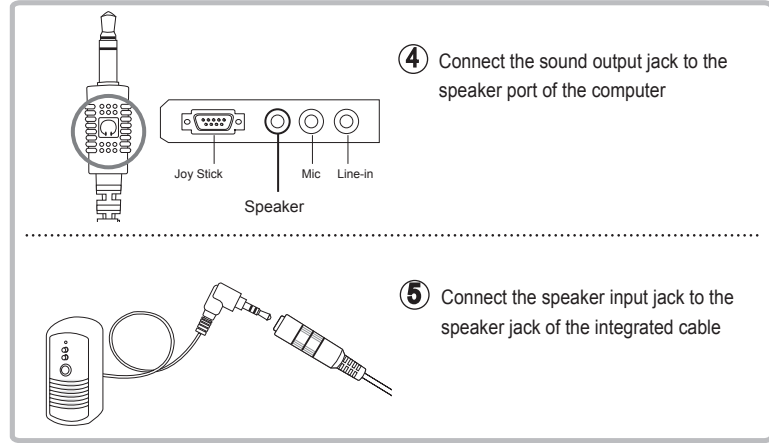
- ② Connect the COM port cable to the unused COM port of a computer

\* Caution : Please make sure whether you connected to COM 1 or COM2 for the convenient software installation.

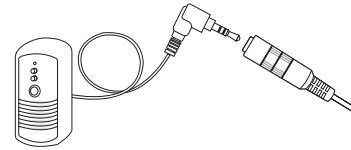


- ③ Connect the microphone jack to the microphone input port of the computer

## Phone Installation

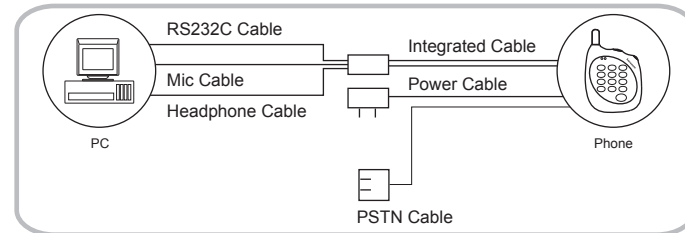


- ④ Connect the sound output jack to the speaker port of the computer



- ⑤ Connect the speaker input jack to the speaker jack of the integrated cable

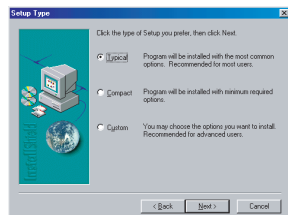
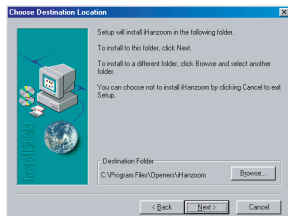
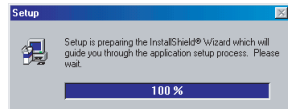
## Connection of ihanzoom™ with a PC



## Program Installation

- ① Close all the other application programs
- ② Visit to the following internet telephone service sites to sign up and get a user ID and a password.
  - <http://www.dialpad.com>
  - <http://www.deltathree.com>
  - <http://www.mediaring.com>

For Deltathree and Mediaring services, please download relevant freeware through the websites as instructed on the web.



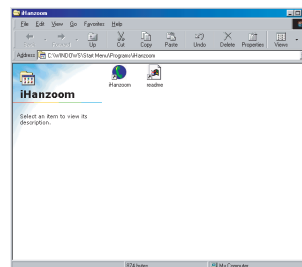
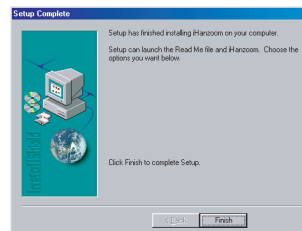
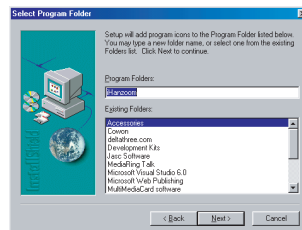
- ③ Insert the iHanzoom™ installation CD and execute "setup.exe"

- ④ Starting iHanzoom™ setup program

- ⑤ Choose the destination folder of the program. To install it under C:\Program files \Openers\iHanzoom, click the "Next" button. To choose a different folder, click "Browse" button. After selecting another folder, click the "Next" button.

- ⑥ Choose the setup type and click the "Next" button. Generally, the typical type is recommended for the proper installation.

## Program Installation



- ⑦ Use iHanzoom as a program folder name and click the "Next" button to continue.

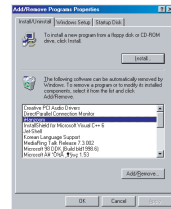
- ⑧ Click the "Finish" button to complete the installation.

- ⑨ After successful installation, iHanzoom icon will show on your desktop and the program folder will be settled as the left picture.

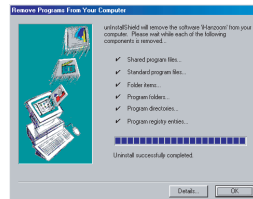
## Program Uninstallation



- ① Double click "add/remove programs" icon in the control panel of MS Windows.



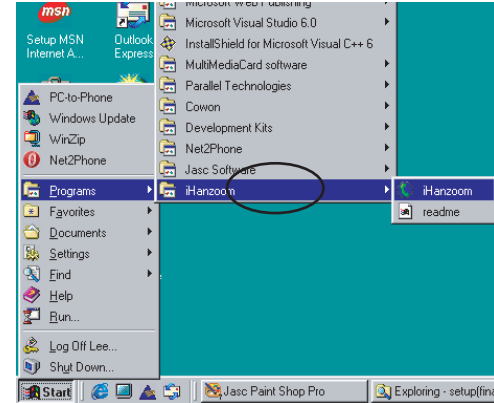
- ② Select iHanzoom item and click the "add/remove" button.



- ③ Click the "OK" button.

## Program Running

- ① Click iHanzoom icon in the iHanzoom folder in Windows Program

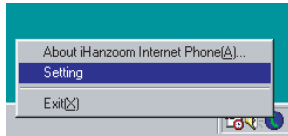


- ② iHanzoom icon will appear in the right side of Windows system tray after successful installation



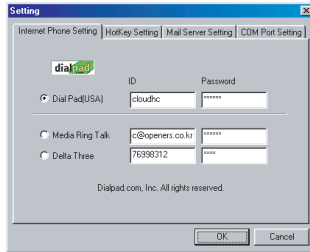


## User Interface Setting



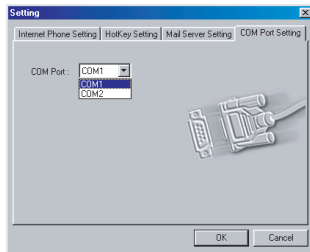
### ① User Interface Setting

- Click the right button of a mouse on iHanzoom icon in the system tray at the bottom of Windows. Select the "Setting" item from popup menu to open setting dialog box.



### ② Internet phone setting

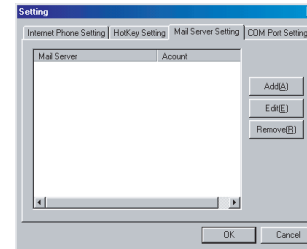
- Click "Internet Phone Setting" tab in the setting dialog box.
- Select the internet phone service provider, and type user ID and password, then click OK button.
- User can select one of three internet phone services after typing details for each one.



### ③ COM port setting

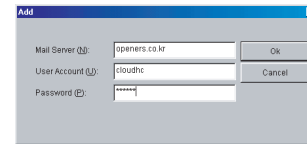
- Click "COM Port Setting" tab in the setting dialog box.
- Select COM1 or COM2 on COM port combo box and click "OK" button.

## User Interface Setting

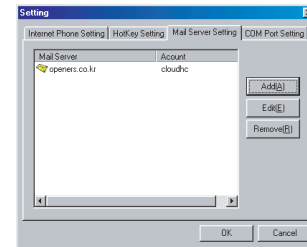


### ④ Mail server setting

- Click "Mail Server Setting" tab in the setting dialog box.
- Click "Add" button.

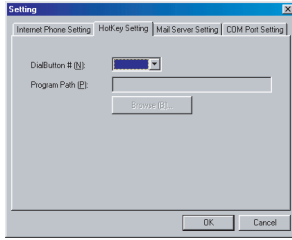


- Type mail server, user-account and password.
- Click "OK" button.



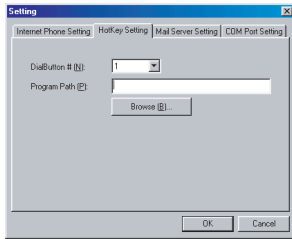
- Click "OK" button to complete POP3 server registration.
- Add other mail servers by using "Add" button again if any.

## User Interface Setting

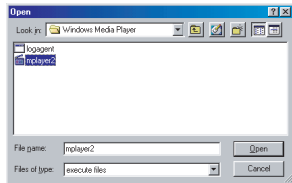


### ⑤ Hot key Setting

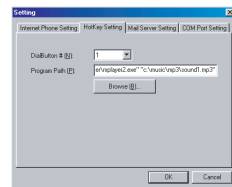
- Click "hot key setting" tab in the setting dialog box.



- Select a hot key number from the dial number combo box and click "browse" button.



- Indicate the program and click "OK" button.

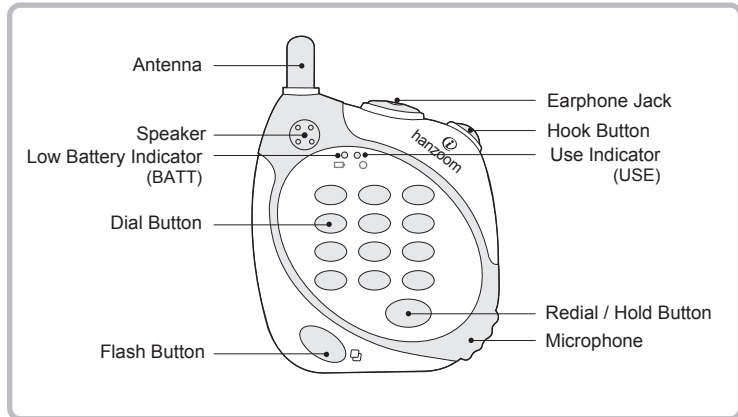


- Click "OK" button.

## Regular Phone



### Handset

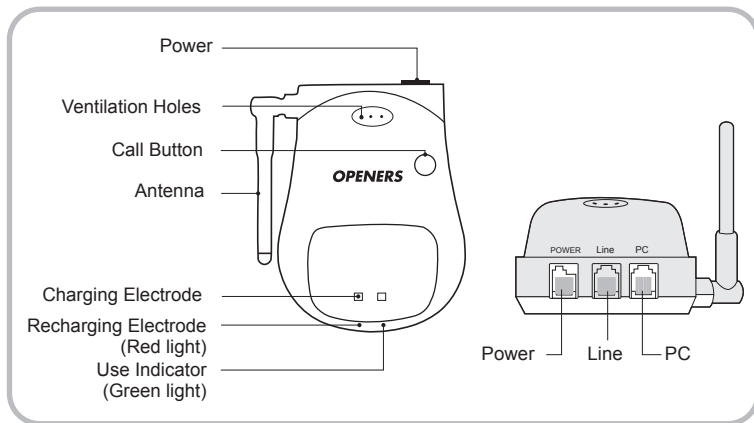


- Hook Button : To make and receive calls
- Flash Button : To transfer a call to another connection in the same PABX or DID switching system
- Redial Button : To redial the previous number
- Hold Button : To hold on a call
- In-use Indicator : Green light on handset indicates that you are connected.
- Low Battery Indicator : Red light is turned on when the battery should be recharged.
- \* ( ASTERISK ) Button : To change channels
- # ( SHARP ) Button : To adjust a receiving volume during a call.

## Regular Phone



### Base station





- Call Button : To page a handset that is away from the base station by playing a melody
- In-use Indicator : Green light starts blinking to indicate an incoming call.
- Recharging Indicator: The red light is on during recharging and doesn't change its color though it was completed.

## Regular Phone




### Note

- Make sure to press the hook button of the ear-microphone adequately. (For about one second) 
- Red light of handset indicates the battery needs to be charged.
- An irregular noise is heard when over-discharged (Recharge immediately).
- Red light is turned on during recharging and keep going on after fully recharged.
- Pay attention not to cover the microphone of handset with hand during a direct communication. ( Hauling can be heard ) 




### Receiving Volume Adjustable

- Press and hold # button for about 1.5 seconds. 
- Green light on handset starts blinking fast. (It increases 1 level of receiving volume)
- Receiving volume can be adjusted in this way up to 3 levels. (Starting from level 1 and automatic set up in level 1 when using again.)



### Channel Selection

- Press and hold \* button for about 1.5 seconds. 
- Green light on handset starts blinking fast.
- Then move hand away from \*button.
- It is automatically transferred from a current channel to the new one without a call interference.

## Regular Phone

### ► Placing a call



- Decide whether to use an ear-microphone or not.
- Connect an ear-microphone to earphone jack of a handset for hands-free communication.



- Remove an ear-microphone for direct communication using built-in speaker and microphone in the handset.



- Press the hook button of the handset or ear-microphone. (After green light is blinking in the handset, dial tone is on.)

- Listen to dial tone and dial the telephone number.



- Press the hook button of the handset or the ear-microphone to hang up a call. (Green light on the handset is turned off accordingly.)

## Regular Phone

### ► Receiving a call



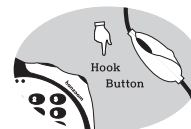
- Green light is blinking with a melody.



- Press any button of a handset or hook button of ear-microphone and start your conversation with a short beep.



- Green light indicates that you are connected.



- Press hook button of the handset or the ear-microphone to hang up a call.

## Regular Phone

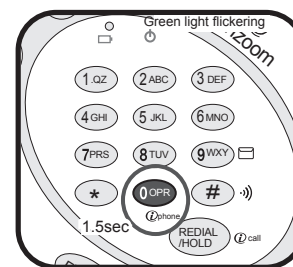
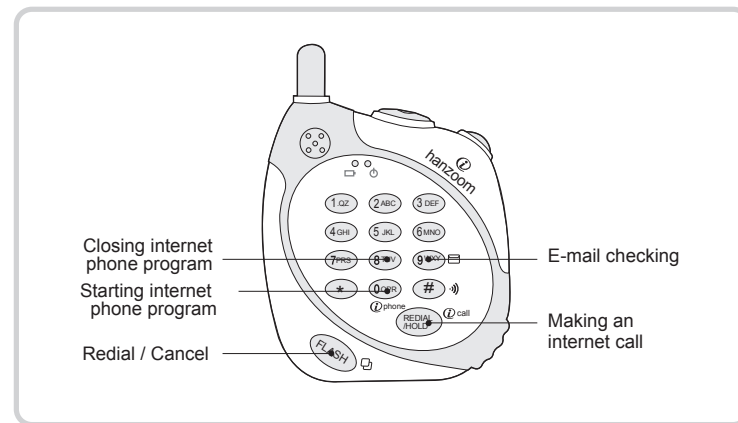


### Power Sources

1. Put the handset on the base station.
2. Check red light on the base station. ( 8~12 hours are recommendable. )
3. Make sure to charge the battery for more than 12 hours before using the phone for the first time.
  - Repeating full charge(more than 12hours) and full discharge( use handset until the red light is on) more than three times, it helps the battery last long.
  - Frequent recharging in use ( without full discharge )may shorten the battery life.
  - In case that the battery life becomes short, repeat the same procedure. (full charge and full discharge)

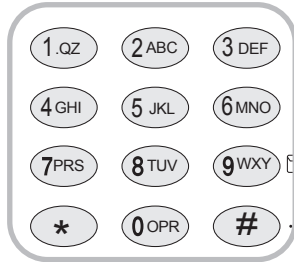
Charging Error	Check Point	Remedy	Remarks
Call interference after recharging	1. Check if the handset was properly put on the base station.	1. Reset the handset to the base station with correct direction.	Recharge the handset by putting it on the base station.
	2. Check if the power is being supplied to the base station.	2. Supply power to the base station with Adaptor.	

## Internet Phone

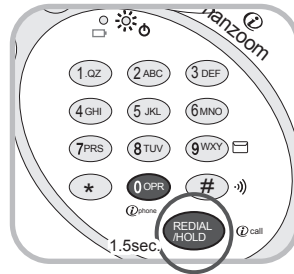


- ① Press and hold "0" button for at least 1.5sec. to execute the internet phone program automatically. You will hear the voice message notifying successful connection.

## Internet Phone



- ② Dial the telephone number



- ③ Press and hold the "Redial/hold" button for 1.5sec. to make a call.
- ④ Press the "Redial/hold" button to hang up a call.
- ⑤ Press the "Flash" button to cancel the dialing number and push the button for 1.5sec. for re-dialing.

## Internet Phone

### Using Dialpad.com



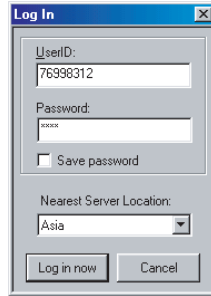
- Log-In Window



- Dialer

## Internet Phone

### Using DeltaThree.com



A screenshot of the DeltaThree.com 'Log In' window. It features a blue title bar with 'Log In' and a close button. The form includes a 'UserID:' field with the value '76998312', a 'Password:' field with masked characters, a 'Save password' checkbox, a 'Nearest Server Location:' dropdown menu set to 'Asia', and 'Log in now' and 'Cancel' buttons at the bottom.

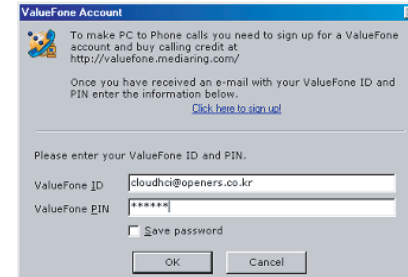
- Log-In Window



- Dialer

## Internet Phone

### Using Mediarling.com



A screenshot of the 'ValueFone Account' creation window. It has a blue title bar with 'ValueFone Account' and a close button. The text explains that users need to sign up for a ValueFone account and buy calling credit at <http://valuefone.mediaring.com/>. It mentions that after receiving an email with a ValueFone ID and PIN, users should enter the information below, with a link to 'Click here to sign up!'. The form asks for 'ValueFone ID' (filled with 'cloudhci@openers.co.kr') and 'ValueFone PIN' (masked with '\*\*\*\*\*'). There is a 'Save password' checkbox and 'OK' and 'Cancel' buttons at the bottom.

- Log-In Window

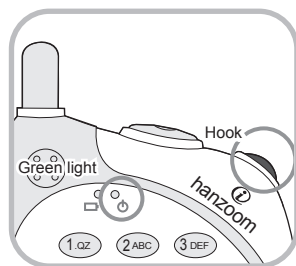


- Mediarling Talk Dialer
  - Press\*(asterisk) button between country code, area code and local phone number especially for Mediarling service

## Internet Phone

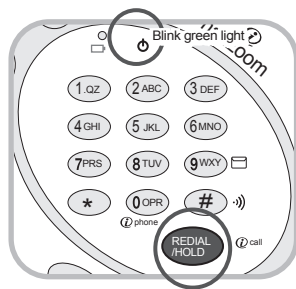
### ► Hanging up

There are two ways to hang up an internet call as follows.



① Push the "Hook" button to hang up a call and also disconnect an internet phone service site

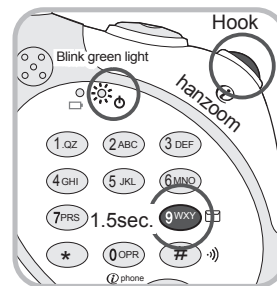
- 1) Push the "Hook" button to hang up a call. Then, the green light of a handset will go out.
- 2) Press "0" (@phone) button to make a new Internet call.



② Push the 'REDIAL/HOLD' button (@call) to hang up a call and maintain the connection with an internet phone service site.

## Additional Functions

### ► E-mail checking



- Press the "Hook" button, and then "9" button for 1.5 sec.
- You can hear a voice message notifying arrivals of e-mail incoming through the mail servers included in the @hanzoom™ mail server setting box.

### ► Receiving a regular phone call on the Internet phone mode

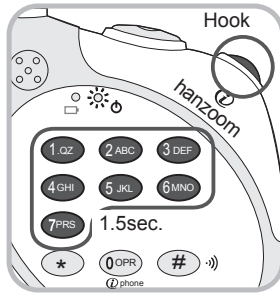


- Press the "Hook" button to receive a regular ordinary call during the Internet phone mode.
- Press the "Hook" button after finalizing the phone conversation to go back to the Internet phone mode.



## Additional Functions

### ► Automatic program executing by using a hot key



- Press the "Hook" button and then, press the relevant call no. (1~7) for at least 1.5 sec. to execute the relevant program. The hot key setting is required at the beginning stage for the proper operation.

### ► Closing Internet phone service program



- Press "8" button for 1.5 sec. to close the Internet phone service program in the computer screen.

Have you registered to internet telephony service providers?

Please visit to each Internet telephony service site for free member registration and get a user ID and a password to make low-cost or free Internet calls with  
@hanzoom™

- Internet telephony service sites
  - <http://www.dialpad.com>
  - <http://www.deltathree.com>
  - <http://www.mediaring.com>

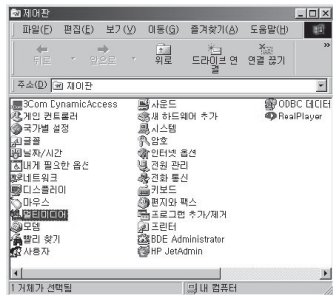
Are you using a full-duplex sound card?

- Full-duplex sound card is required for free internet calls to work properly.

Is any firewall or proxy server installed?

- Normally free internet phone is not workable in the network in which any firewall or proxy server is installed. Please consult with a network manager.

## Is volume properly set?



Run volume control program to set up volume and microphone of a computer sound card.

- 1) Open "control pannel" under Window Start>Setting
- 2) Double click "Multimedia" icon.
- 3) Press replay button in an Audio tap when "Multimedia registration information" windows are running.

4) Then volume control, CD, wave control windows appears. Make sure that microphone's phoneme is checked for removal. Otherwise, echoes may occur during internet phone conversation.

5) Click "Recording" button, then controllable volume settings will appear. If "Mic" are not selected, click register information from option menu. Among volume control's selection choose a "Mic" and then select yes. If "Mic" shows up in recording control's window, click select button.

6) Check wheather it is correctly set through windows desktop Start>Program>Entertainment>Recorder Program.

7) Click "Redial/Hold" button (@call) of the handset for 1.5 sec.

8) Using "Sound-Recorder", click right button to record via an ear-set. Check recording sound by clicking replay button. If recording sound is inappropriate, control again "wave" and "mic" volume in the "Volume control's window" again.

## Regular Phone



If you have any problems, please check these points first.

- The handset doesn't work well.

Symptom	Check Points	Remedy1	Remedy2	Remarks
Green light of handset keeps blinking, and making or receiving a call doesn't work well.	1. Check if power is not firmly connected to the base station. (Green light should be turned on)	1. Supply the power to the base station connecting AC adaptor to the wall outlet.	If Remedy1 doesn't work.. ▼ Refer to "Handset Reset"	If you still have a problem, consult where you have purchased.
	2. Check if green light of handset is blinking when pressing the hook button of it. (if not, or red light is on, check the battery recharging)	2. Recharge the battery.	If Remedy2 above doesn't work.. ▼ Refer to "ID setting between handset and base station"	

## Regular Phone



### Handset reset

- Press and hold hook button of handset for about three seconds until green light flashes. □



### ID setting between handset and base station □

1. Be sure to press and hold flash button, then press hook button.
  2. Green light of handset is turned on (If the light is off or blinks, retry from No.1 above in condition of light-off.)
  3. Press the call button on the base station for about three seconds until red recharging indicator on the base station starts blinking.
  4. If green light is turned off after a while (1~20 seconds), the handset and base station finished ID setting.  
(If green light doesn't turned off, press the call button again.)
- Melody can be played operating a paging function after the ID setting was completed.

## Regular Phone

- □ There is no melody ringing heard when receiving a call

Symptom	Check Points	Remedy	Remarks
There is no melody ringing when receiving a call.	1. Is telephone line connected to the base station firmly?	1. Connect telephone jack to the base station.	Check these points and if you still have a problems, consult where you have purchased.
	2. Does green light of the base station blink when receiving a call?	2. Connect telephone jack to the base station.	
	3. Is power being supplied to the base station?	3. Supply power to the base station connecting AC adaptor to the wall outlet.	
	4. Does the battery need recharging?	4. Recharge immediately red light is when on.	

## Regular Phone

- The calling range is getting short along with noise during a call

Symptom	Check Points	□ Remedy	Remarks
The calling range is getting short along with noise during a call	Any electronics may cause electric wave around the phone ?	Move the base station to another place.	The calling range depends on the electric wave circumstances around the phone.
	Was it installed in the airtight place ?		


## Internet Phone



If you have any problems, please check the following points.

- ▶ If there is no response after pressing a button on the handset,
  - Check whether @hanzoom™ program is currently running.
  - Check @hanzoom™ program icon at the right side of the system tray.
  - Check the connectivity of the integrated cable. Refer to the phone installation process again.
  - Check the port setting in the user interface setting box.
- ▶ If the mail checking function is not workable,
  - Check whether the mail server supports POP3
  - Check whether mail server name, mail account and password are correctly input into the dialog box of the mail server setting tap.
- ▶ If there is failure in opening COM port
  - Check COM port setting procedure and change it to the other port (COM1 or COM2).

## Internet Phone

- ▶ When there is an error at  Internet Explorer
  - Check a user ID & password of internet phone service sites are correct at internet phone setting box.
  - Basically, the member registration to internet telephony service sites is required.
  - Visit to Internet telephony service web sites to sign up and get a free user ID & password.
  - Check the system requirements :
    - Check the version of MS Internet Explorer. At least, MS Internet Explorer 5.01 is required  
The upgrade is available through [http://www.microsoft.com/windows/ie\\_intl/ko/download/](http://www.microsoft.com/windows/ie_intl/ko/download/)
    - Check whether MS Virtual Machine is the latest version.  
To upgrade JAVA VM, please visit to the site, [http://www.microsoft.com/java/dl\\_vm40.htm](http://www.microsoft.com/java/dl_vm40.htm)  
or <http://windowsupdate.microsoft.com>
  - Check the version of MS Windows Media Player. The version should be 6.4 or above.  
To upgrade MS Windows Media Player, please visit to <http://www.microsoft.com/windows/mediaplayer/ko/download/>.
  - The Internet phone service can be delayed due to some problems of internet phone service sites temporarily such as excessive users or unstable Internet connection.  
In that case, please press "HOOK" button and then "8" button to disconnect.  
Then, try to re-start the service.

## Electrical/Physical Specification

- Frequency Range
  - For Europeans
    - Base Station Rx, Handset Tx : 914.0125~914.9875 MHz
    - Base Station Tx, Handset Rx : 959.0125~959.9875 MHz
  - For North Americans(ISM)
    - Base Station Rx, Handset Tx : 925.30~927.25 MHz
    - Base Station Tx, Handset Rx : 902.80~904.75 MHz
  - For Japanese
    - Base Station Rx, Handset Tx : 253.8625~254.9625 MHz
    - Base Station Tx, Handset Rx : 380.2125~381.3125 MHz
- Transmit Output Power:
  - For Europeans : 8.0~10.0 dBm
  - For North Americans : -2 dBm
  - For Japanese : 8.0~ 10.0 dBm
- Spurious Transmission:
  - For Europeans : -55 dBm max.
  - For North Americans : -54 dBm max.
  - For Japanese : -40 dBm max.
- Adjacent Channel Selectivity:
  - For Europeans : 51 dB min.
  - For North Americans : 45 dB min.
  - For Japanese : 53 dB min.
- Dimension (Handset) : 70.0mm(H) x 59.3 mm(W) x 28mm(D)
- Channels : 40 ( 89 Chs. for Japanese)
- Communication System : Full Duplex
- Modulation System : Analog FM
- Receiving Sensitivity : -110 dBm
- Radiation Interference : -57 dBm
- Talk Time : About 4 hours
- Standby Time : About 16 hours
- Weight (Handset, Including battery)
  - For Japan and North American : Approx. 82g
  - For Other Countries : Approx. 90g

## **NOTICES TO USER**

This device complies with Part 15 of the FCC Rules. Operation is subject to the following two conditions:

(1) this device may not cause harmful interference, and (2) this device must accept any interference received, including interference that may cause undesired operation.

**Privacy of communications may not be ensured when using this phone**

### **FCC WARNING**

*This equipment generates or uses radio frequency energy. Changes or modifications to this equipment may cause harmful interference unless the modifications are expressly approved in the instruction manual. The user could lose the authority to operate this equipment if an unauthorized change or modification is made.*

### **INFORMATION TO THE USER**

*This equipment has been tested and found to comply with the limits for a Class B digital device, pursuant to Part 15 of the FCC Rules.*

*These limits are designed to provide reasonable protection against harmful interference in a residential installation.*

*This equipment generates, uses and can generate radio frequency energy and, if not installed and used in accordance with the instructions, may cause harmful interference to radio communications. However, there is no guarantee that the interference will not occur in a particular installation. If this equipment does cause harmful interference to radio or television reception, which can be determined by turning the equipment off and on, the user is encouraged to try to correct the interference by one or more of the following measures:*

- Reorient or relocate the receiving antenna.*
- Increase the separation between the equipment and receiver.*
- Connect the equipment to an outlet on a circuit different from that to which the receiver is connected.*
- Consult the dealer for technical assistance.*