

FY-2000/R

User's Manual



Kedcom Co., Ltd.

FCC COMPLIANCE STATEMENT:

This device complies with part 15 of the FCC Rules. Operation is subject to the following two conditions: (1) This device may not cause harmful interference, and (2) this device must accept any interference received, including interference that may cause undesired operation.

INFORMATION TO USER:

This equipment has been tested and found to comply with the limits of a Class B digital device, pursuant to Part 15 of the FCC Rules. These limits are designed to provide reasonable protection against harmful interference in a residential installation. This equipment generates, uses and can radiate radio frequency energy and, if not installed and used in accordance with the instructions, may cause harmful interference to radio communications. However, there is no guarantee that interference will not occur in a particular installation; if this equipment does cause harmful interference to radio or television reception, which can be determined by turning the equipment off and on, the user is encouraged to try to correct the interference by one or more of the following measures:

- 1. Reorient / Relocate the receiving antenna.*
- 2. Increase the separation between the equipment and receiver.*
- 3. Connect the equipment into an outlet on a circuit different from that to which the receiver is connected.*
- 4. Consult the dealer or an experienced radio/TV technician for help.*

CAUTION: Changes or modifications not expressly approved by the manufacturer responsible for compliance could void the user's authority to operate the equipment



Table of content

User's
Manual



Parts name and accessories

1. MP3 Player body name
2. Accessories name



How to use MP3 Player Smart Card

1. How to use the SMART CARD
2. Connecting SMART CARD and MP3 Player



Connecting to a PC

1. Connecting to a PC



Setup File Manager

1. Configuring ECP Mode on PC
2. Setup File Manager Program



Using File Manager

1. Formatting Smart Card
2. Functions of each menu
3. Downloading MP3 File Form PC to MP3 Player
4. Uploading files in MP3 Player to PC
5. Deleting files



MP3 Player playback and special features

1. Playback and recording with MP3 Player
2. MP3 Player LED display



Saving MP3 Player to Audio CD music

1. Setup CDex.
2. Using Cdex



Product specifications.

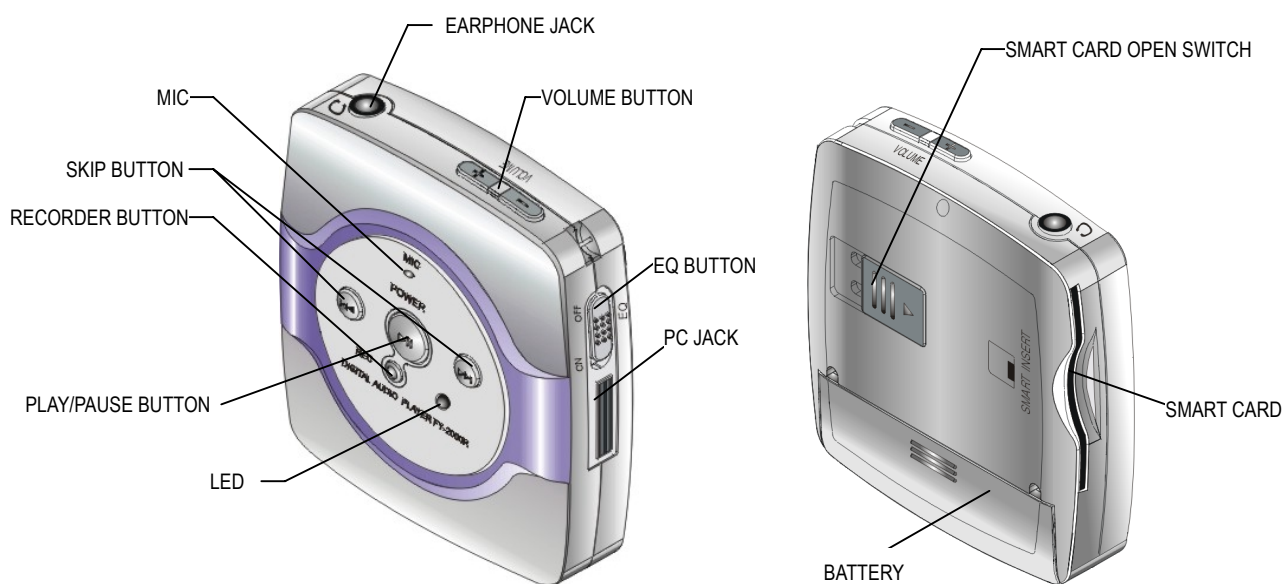
1. Product specifications



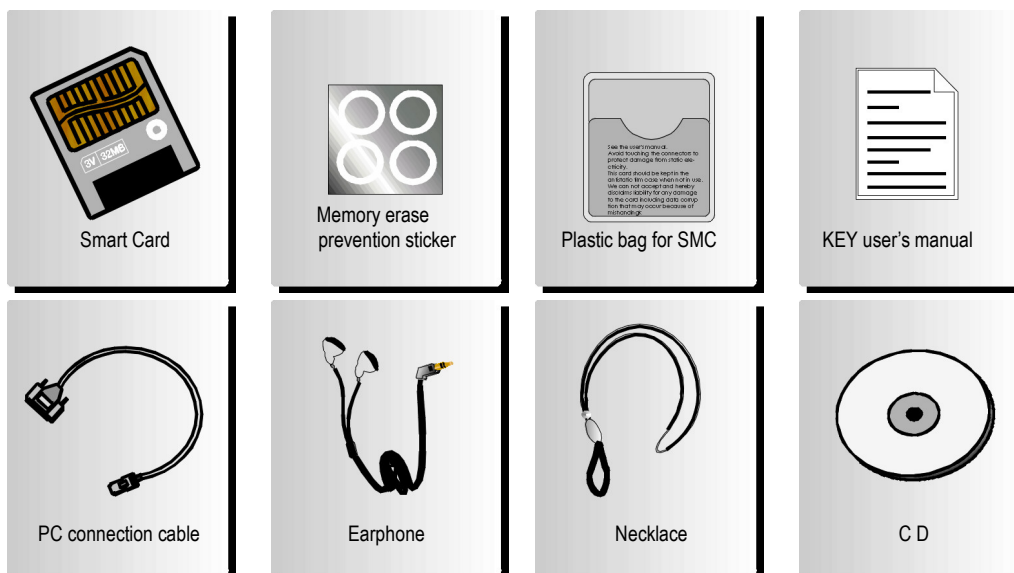
Parts Name and Accessories

User's
Manual

1. MP3 Player Body Name



2. Accessories Name



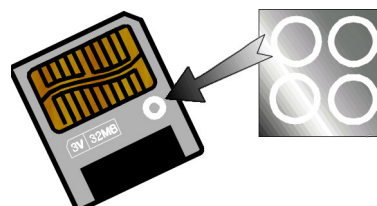


How to Use MP3 Player Smart Card

User's
Manual

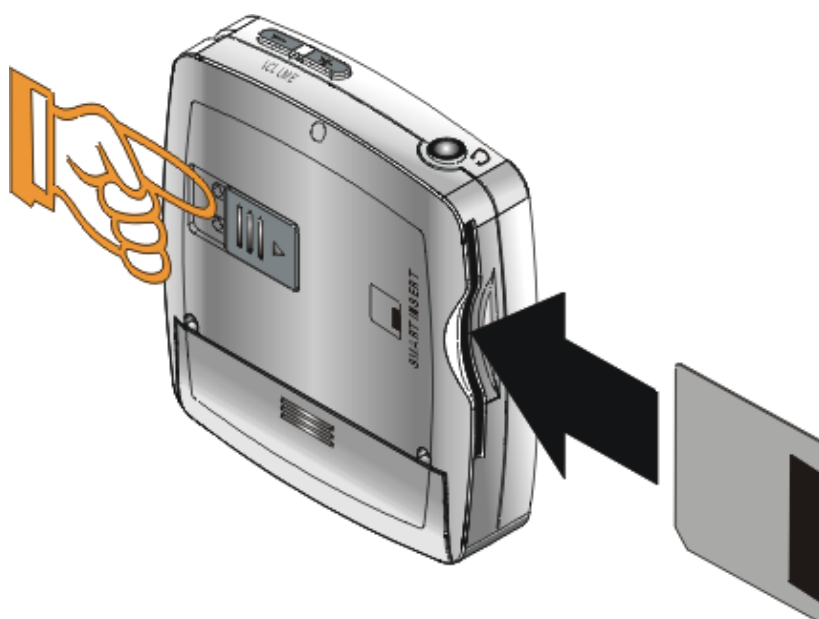
1. How to Use The Smart Card

- ☞ SMART CARD is a portable and read/write possible fresh type RAM, which is widely used in MP3 players, digital cameras and digital movie cameras. This product can use 16 Mbyte and 32 Mbyte SMART Card.
- ☞ In order to keep music files stored on smart card permanently, put the memory erase protection sticker on the side of the SMART card as shown in the figure beside.



1. Connecting Smart Card and MP3 Player

- ☞ Insert smart card into MP3 player as shown in the following figure.
- ☞ Remove smart card by sliding the smart card switch of the product.



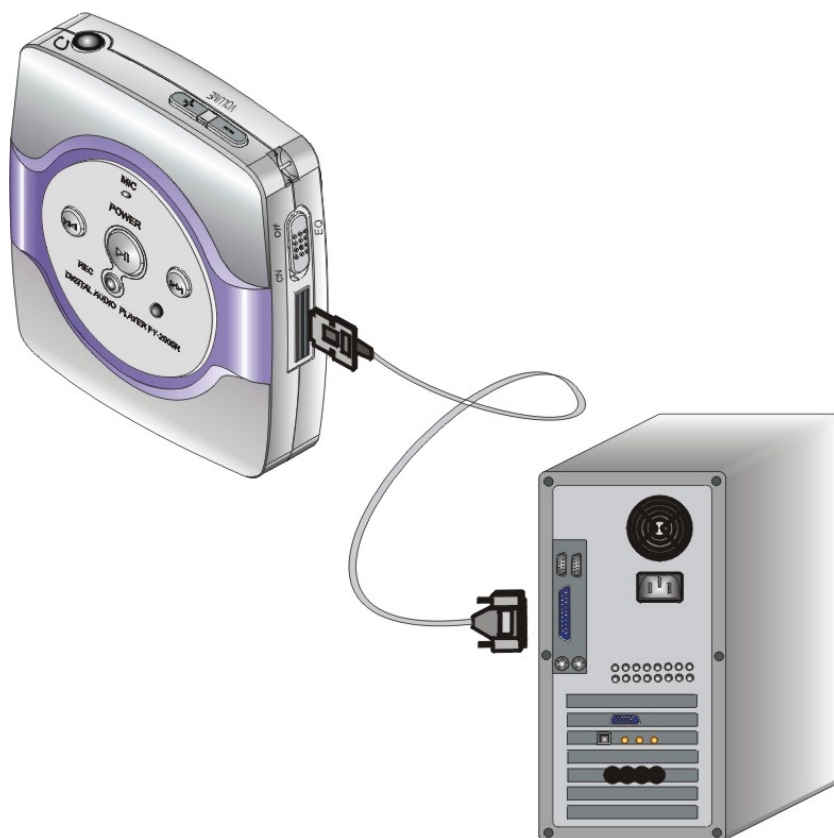


Connecting to a PC

User's
Manual

1. Connecting to a PC

- ☞ Connect the parallel cable provided with accessories to the printer port of the PC and to MP3 Player. Please disconnect the PC from the mains when performing the above connection.





Setup File Manager

User's
Manual

1. Configuring ECP Mode on PC

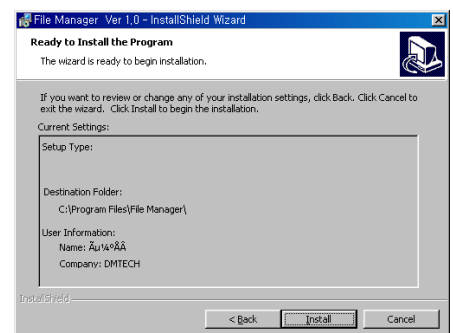
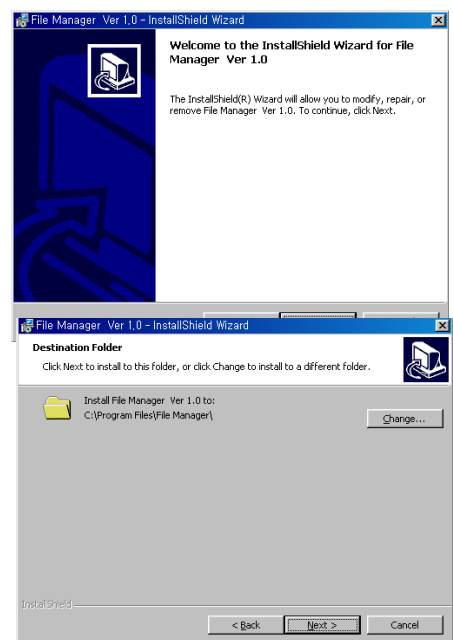
- ☞ Connect MP3 player to the printer port and support ECP mode of printer mode.
- ☞ Perform the following procedures to change ECP mode.
 - Turn on the PC, and press DEL or F2 key in RAM test screen to move to Setup screen.
 - Move to print port configuration screen (integrated peripherals or peripheral setting).
 - Change print port to ECP Mode.
 - Save the changes and reboot.

2. Setup File Manager Program

- ☞ Insert the provided software CD into CD-ROM driver and double-click "File Manager Install" file on the CD to run the installation program.
- ☞ Press "Next" button to move to the next step

- ☞ When destination location window is displayed, the user can choose a directory to install the software. If no modification is made, the program will be installed in "C: \Program Files\File Manager" directory. Press "Next" button to move to the next step

- ☞ Clicking "Next" button will register the program in accessories of Windows, and will install the program
(An icon is automatically created on the Desktop).





Using File Manager

User's Manual

1. Functions of Each Menu

Format Smart Card. _____

Recall file information _____

Copy files from the PC To MP3 Player _____

Copy files from the PC To MP3 Player _____

Delete selected files in MP3 Player _____

Stop the current work _____

Move th Option screen _____

Move th Help item _____

Display file information stored in MP3 Player

File Name :
File Size :
Total File(s) : 0 file(s) Memory Space : 1 / 1 KB

완료 Complete! _____

Data transfer display window

Display program connection state.

Format Smart card.

Refresh Smart card information.

Exit program.

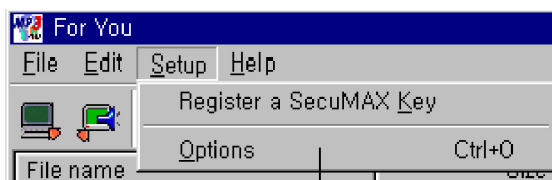
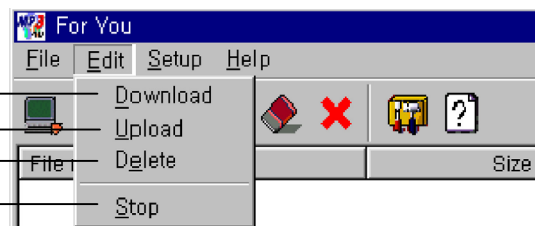


Copy MP3 file to MP3 Player

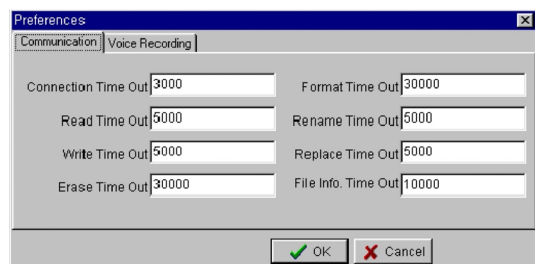
Copy MP3 file in MP3 Player to the PC

Delete selected files


Stop the current work



Move to option screen




2. Formatting Smart Card

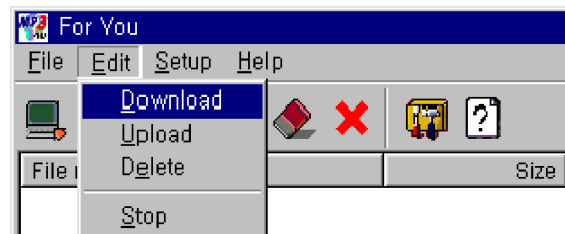
- Select File, and then "Format"
(Or press  button)

- First Time, using The Smart Card, Formatting Smart Card Necessarily




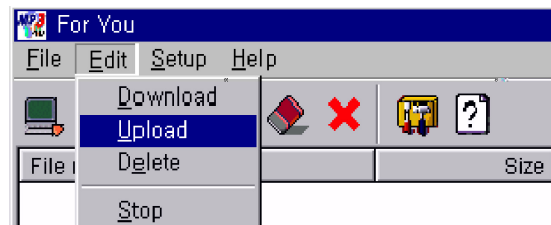
3. Downloading MP3 file from PC to MP3 Player

- Double click "File Manager" icon.
- Select Edit and then "Download" button.
(or press  button)
- Select the file to download by left clicking on it in the file window of the Computer.
- Copy the file by clicking Open button.



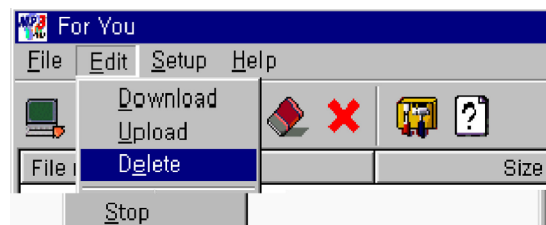
4. Uploading Files in MP3 Player to PC

- Select the file to Upload
- Select Edit, and then "Upload" button.
(Or press  button)
- Select the directory to save on the PC and press Save button.



5. Deleting File

- Select the files to delete from the file list.
- Select Edit, and then "Delete" button.
(Or press  button)





MP3 Player Playback and Special Features

User's Manual

1. Playback and Recording with MP3 Player

Playback and Recording with MP3 Player (Recording is optional)			
NO	CONDITION	OPERATION	Remark
1	Short press PLAY/PAUSE KEY (▶)	PLAY and PAUSE are alternately repeated	
2	Long press (about 3 seconds) PLAY/PAUSE KEY (▶)	Power Save mode (PLAYER power is off)	
3	Short press NEXT KEY (▶▶)	Plays the next song	
	Long press NEXT KEY (▶▶)	Current song is played back at high speed and resumes normal play back when released	
4	Short press REVERSE KEY (◀◀)	From standby state, previous song is played. When in play mode, the song is rewound to the beginning	
	Long press REVERSE KEY (◀◀)	Current song is rewound at high speed and resumes normal playback when released	
5	Short press RECORDING KEY (Recording is possible from PAUSE state only)	Starts recording Stops recording when Play/Pause key is pressed during recording stops. Plays the just recorded song, pressing Play/pause after stopping recording.	option
6	Short press VOLUME UP(+) KEY	VOLUME increases.	
7	Short press VOLUME DOWN(-) KEY	VOLUME decreases	
8	Short press EQ switch	Powerful low music can be heard when EQ switch is "ON"	

☞ If MP3 Player does not operate when Play/Pause key is pressed, please check the battery

2. MP3 Player LED Display

MP3 Player LED Display			
NO	CONDITION	DISPLAY	Remark
1	All key operation	GREEN LED displayed once for 1 second	
2	All key operation without smart card	RED, GREEN LED displayed for 5 seconds alternately	
	Play key operation without songs in smart card		
	Key operation with unformatted smart card		
	Smart card is full when voice recording starts		
	Smart card becomes full while voice recording		
3	Record key is pressed while in PAUSE state	GREEN LED displayed for 3 seconds then recording begins	
	During recording	GREEN LED displayed 2 times every 5 seconds	
4	During playback	GREEN LED displayed once every 5 seconds	
5	Voice recording is stopped	RED LED displayed continuously for 3 seconds	
6	Battery voltage is below 1.1V	RED LED displayed continuously twice every 5 seconds	
7	PLAY/PAUSE KEY is pressed for more than 3 seconds (switches to power save status)	GREEN LED displayed for 3 seconds before RED LED is displayed	

MP00-M029B



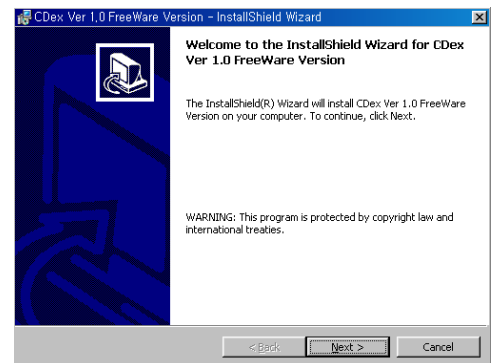
Saving MP3 Player to Audio CD music

User's Manual

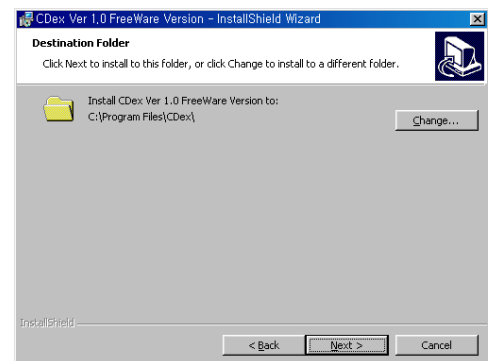
1. Setup CDex

- ◆ Do you want to Save MP3 Player After converted MP3 file to audio CD music, must install “Cdex”

- ☞ Insert the provided software CD into CD-ROM driver and double-click "Cdex 1.0 Install" file on the CD to run the installation program Click Next button to move to the next step

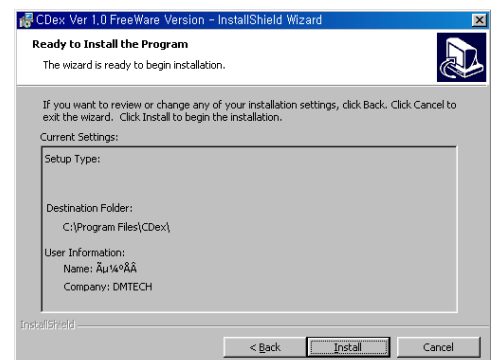


- ☞ When destination location window is displayed, the user can choose a directory to install the software. If no modification is made, the program will be installed in C: \CDex directory. Press “Next” button to move to the next step



- ☞ Clicking Next button will register the program in accessories of Windows, and will install the program

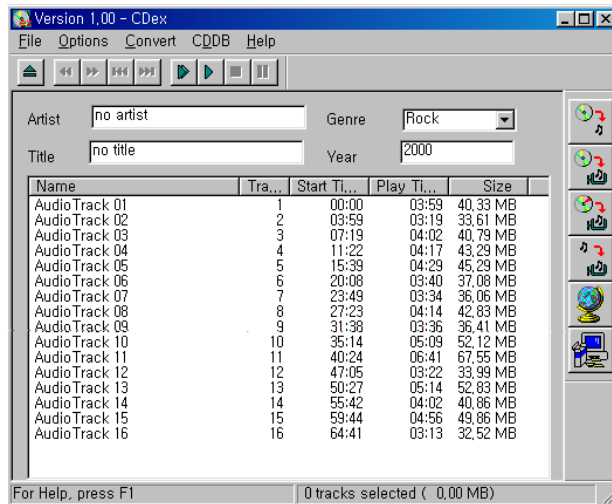
(An icon is automatically created on the Desktop).



2. Using CDex


2-1. Running

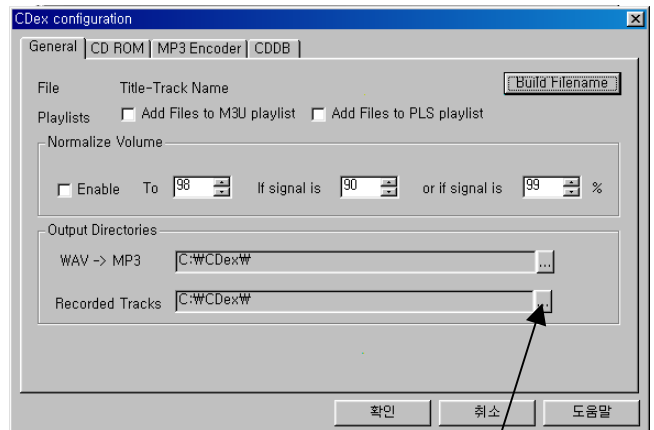
- ☞ After Insert Audio Disc in CD-ROM Driver. Double Click an icon "Cdex" on the Desktop, Running Cdex Program



]


2-2. Environment Configuration

- ☞ Created directory than it want to Computer.
- ☞ If save on user's directory to converted MP3 file, Select Option in setting from Cdex program menu or click  from the iconbar on the right to display the setting window.
- ☞ Setting on user's directory to "Recorded Tracks"




- ☞ If the user can not Change directory in "Recorded Tracks", CDex is configured with default directory "C:\CDex"

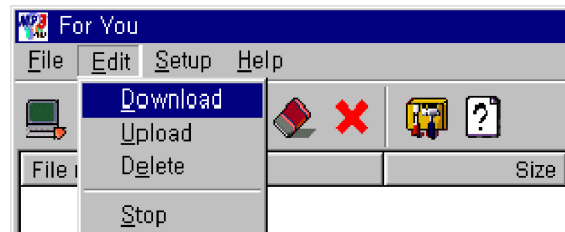
2-3. Saving to The computer, After Converting Audio CD to MP3 file

- ☞ Select the track to convert from the numerous audio track, and click  from the iconbar on the right
- ☞ Converted MP3 files Save in created directory to user's directory .



2-4. Downloading MP3 file from PC to MP3 Player

- ☞ Double click "File Manager" File Name icon.
- ☞ Select Edit and then "Download" button.
(or press  button)
- ☞ Select the file to download by left clicking on it in the file window of the Computer.
- ☞ Copy the file by clicking Open button.



2-5. Miscellaneous

- ☞ This Cdex version 1.0 is a freeware version, which can be used by anyone. This is an excellent and easy to use program, with exception on some CD writers, which can be freely distributed to anyone. When the higher performance and more professional sound editing is required, visit <http://www.cdex.n3.net/> for more information.



Product specifications

User's
Manual

1. Product specifications

NO	Item	Specifications
1	Smart Card Support	16Mbyte, 32Mbyte, 3V
2	Frequency Response	100Hz ~ 20KHz
3	S/N Ratio	85dB
4	Audio Output Level	0.3Vrms
5	Audio Output power	4mW
6	Battery Spec	AA 1.5V X 1