

移动蓝牙键盘 for iPad2



1.0 产品特点

1. 内置无线蓝牙2.0键盘
2. 专为iPad设计的现代风格
3. iPad的显示屏幕主视觉上的便捷
4. 内置可充电锂电池每次替换可持续使用约55个小时
5. 特殊的(返回)主界面触摸式按键一键使用多种的应用
6. 重量轻,按键声音小,防水防尘
7. 用户向导
7. 键盘节能睡眠模式

包含:

1. 无线键盘
2. 充电
3. 用户向导

为增强可携带性, 可折叠性的独特设计

2.0 键盘规格

1. 蓝牙2.0标准接口
2. 操作距离可达10米
3. 调制系统: GFSK
4. 运行电压: 3.0-5.0V
5. 工作模式: <5.0mA
6. 待机模式: <2.5mA
7. 睡眠模式: <200µA
8. 充电模式: 4-5小时
9. 待机时间: 60天
10. 充电时间: 4-5小时
11. 锂电池容量: 450mA
12. 连续工作时间: 55个小时
13. 锂电池寿命: 3年
14. 锂电池的规格: 45mm x 16mm x 5mm
15. 按键强度: 80±10g
16. 按键寿命: 5百万次触摸
17. 操作温度: -10°C ~ +55°C
18. 键盘外形尺寸: 245.40x189.80x11.00mm
19. 键盘净重: 345g

3.0 蓝牙键盘的连接

步骤1: 打开电源, [电源]和[蓝牙]会亮5秒钟,然后会灭掉。

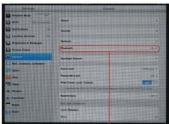
步骤2: 按连接按钮, [蓝牙]指示灯将会闪光, [电源]指示灯将会继续亮。键盘现在已经准备好连接到iPad。



第三步: 打开并解锁iPad, 点击iPad[设置]图标

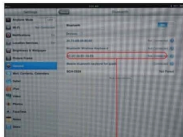


第四步: 在设置菜单, 选择项目[常规]打开[蓝牙]的设置, 点击[蓝牙]来打开连接, iPad会自动搜索有蓝牙功能的装置。



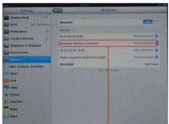
点击打开蓝牙设置

第七步: 无线键盘连接成功, [电源]指示灯会一直亮着, 直到卸掉键盘。



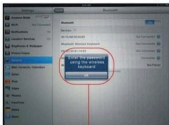
键盘连接成功

第五步: 无线键盘被发现, 点击这个设备来连接。



点击键盘来连接

第六步: 当屏幕上显示输入密码时输入密码。



使用无线键盘输入密码

特别提示:

无线键盘可以连接到网络3G、3G 3G和安装了镜像4.0或更新的触屏式ipod, 对于其他蓝牙设备, 在连接键盘之前请确保蓝牙设备的兼容性。

4.0 充电

当电池电力不足时, [电源]指示灯开始闪烁, 就该给键盘充电了。
步骤1: 把USB-B连接到键盘的充电接口。
步骤2: 把USB-A连接到电源适配器或电脑的USB接口。
步骤3: (在充电/充电过程中红色指示灯将会一直发光。当充电完成[充电]指示灯将会关闭。

5.0 节能睡眠模式

当键盘闲置15分钟会强制进入睡眠模式, 键盘[电源]指示灯会熄灭。从睡眠模式启动, 只需按下任意键, 等待3秒, 键盘就能重新使用了。

6.0 安全警告

1. 该设备远离辐射的物体。
2. 不要把重物放到键盘上。
3. 不要对该设备进行微波扫描。
4. 不要挤压或扭曲键盘。
5. 远离危险化学品或其他有机液体。

7.0 清洗

用水、酒精、或者基础消毒剂清洗键盘。

8.0 疑难解答

(A) 无法连接。

1. 确保电源开关已打开。
2. 请确定键盘在工作使用距离范围内。
3. 确保电池充电。
4. 请确定被连接的设备蓝牙功能已经激活
5. 确保无线键盘连接到iPad
6. 确保无线键盘和iPad已配对

(B) 无法更改键盘

1. 确保USB电源线正确地与键盘和电源连接。
2. 确保插上充电器插头插进电源插座。

9.0 特殊键描述

针对iPad的多媒体功能, 长按F1-F12键上优化有相应图标的多媒体快捷键。

联邦通信委员会关于声明

此设备经过测试, 符合B级数字设备标准。

联邦通信委员会第15部分的规定。在住宅区安装时, 这些限制为防止有害干扰提供了合理保护, 本设备可以产生。利用并开发发射限制能量。如果不按说明中的要求安装和使用本设备, 有可能对无线电通讯或电视接收产生干扰(可以通过关闭设备来确定)。

这个装置需要符合美国FCC规定中的part 15 指令, 这个装置的运行中需要符合以下两个条件: (1) 这个装置不会对周围的环境产生任何有害的干扰, 包括意外操作导致的干扰。

FCC警告: 任何不遵守许可的改动或者修改可能会使用户的操作权限无效。

10.0 质保说明

在没有发生人为损坏的状况下, 质保一年。

重要事项

FCC辐射声明:

1. 该设备符合FCC辐射限值不可控的环境。最终用户必须遵循的特定操作指令为满足射频辐射。
2. 该发射器禁止协同定位, 并禁止和其他天线或者发射器共同操作。



Mobile Bluetooth Keyboard for iPad2



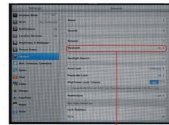
1.0 Product Features

1. Built-in wireless Bluetooth 2.0 keyboard
2. Designed with the iPad in mind
3. iPad display stand for convenient viewing
4. Built-in Rechargeable Polymer lithium battery which lasts for approximately 55 hours percharge
5. Touch screen interface with multiple uses
6. Light weight, quiet keystrokes, Water and dust-proof
7. Energy efficient sleep mode

Includes:

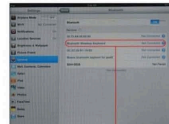
1. Wireless/wired keyboard
2. USB Charger
3. User Guide

Step 4: Once in the Settings menu navigate to the General Settings section. From there, activate your iPad's Bluetooth connection via the Bluetooth settings. Your iPad will automatically begin to search for compatible Bluetooth devices.



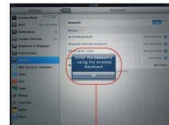
Click on turn on Bluetooth setting, select it to connect

Step 5: when the wireless keyboard is found, select it to connect



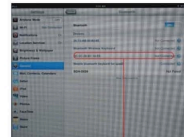
Click on the keyboard to connect

Step 6: Enter the password as shown on screen



Enter the password

Step 7: The keyboard is now successfully connected! The [Power] indicator light will remain active until the keyboard is powered off.



Keyboard connected successfully

5.0 Energy Saving Sleep mode

The keyboard will convert to sleep mode when it is inactive for 15 minutes, and the keyboard Power indicator light will turn off. To reactivate the keyboard, just press any key and wait 3 seconds.

6.0 Safety Caution

1. Keep the keyboard away from sharp objects.
2. Do not place heavy objects on top of the keyboard.
3. Do not microwave the keyboard.
4. Do not use unnecessary force on the keyboard, and do not distort the keyboard.
5. Keep away from liquids.

7.0 Cleaning

Clean the keyboard with water, alcohol or disinfectant materials.

8.0 Troubleshooting

(A) Unable to connect

1. Make sure the power switch is on.
2. Make sure the keyboard is within the operating distance.
3. Make sure the battery is charged.
4. Make sure the iPad's Bluetooth setting has been turned on.
5. Make sure you have connected the keyboard to the iPad.
6. Make sure the keyboard has been synched with the iPad.

(B) Unable to charge keyboard

1. Make sure the USB power cable is properly connected to the keyboard and the power source.
2. Make sure the wall charger is properly plugged into the power outlet.

9.0 Special keys description

Hold down the "fn" key in combination with F1-F12 and the Insert key to access special keys that can be used to control the iPad's multimedia functions.

Federal Communication Commission Interference Statement.

This device complies with Part 15 of the FCC Rules. Operation is subject to the following two conditions: (1) This device may not cause harmful interference, and (2) this device must accept any interference received, including interference that may cause undesired operation. NOTE: This equipment has been tested and found to comply with the limits for a Class B digital device, pursuant to part 15 of the FCC Rules.

These limits are designed to provide reasonable protection against harmful interference in a residential installation. This equipment generates uses and can radiate radio frequency energy and, if not installed and used in accordance with the instructions, may cause harmful interference to radio communications. However, there is no guarantee that interference will not occur in a particular installation.

If this equipment does cause harmful interference to radio or television reception, which can be determined by turning the equipment off and on, the user is encouraged to try to correct the interference by one or more of the following measures:

- Reorient or relocate the receiving antenna.
- Increase the separation between the equipment and receiver.
- Connect the equipment into an outlet on a circuit different from that to which the receiver is connected.
- Consult the dealer or an experienced radio/TV technician for help.

This device complies with Part 15 of the FCC Rules. Operation is subject to the following two conditions: (1) This device may not cause harmful interference, and (2) this device must accept any interference received, including interference that may cause undesired operation. FCC Caution: Any changes or modifications not expressly approved by the party responsible for compliance could void the user's authority to operate this equipment.

IMPORTANT NOTES

FCC Radiation Exposure Statement:

1. This equipment complies with FCC radiation exposure limits set forth for an uncontrolled environment. End users must follow the specific operating instructions for satisfying RF exposure compliance.
2. This transmitter must not be co-located or operated in conjunction with any other antenna or transmitter.

iPad, iPhone, iPod Touch are trademarks of Apple Inc.

