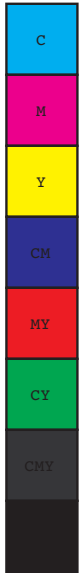


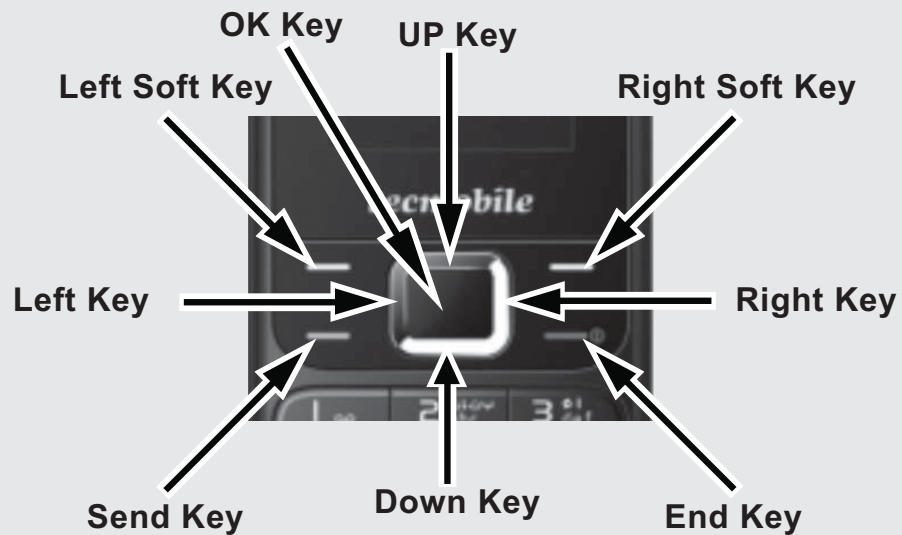
tecmobile

R30 User Manual



Getting started

Getting to know your phone



Status icons

Installing the SIM card and battery.

- (1) Press and Hold the **[End Key]** for three seconds to switch OFF the phone.
- (2) To Remove the battery cover: Slide it downwards.
- (3) Lift and Remove the battery.

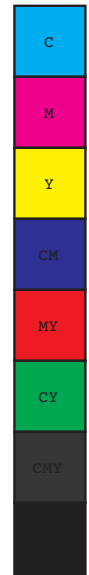
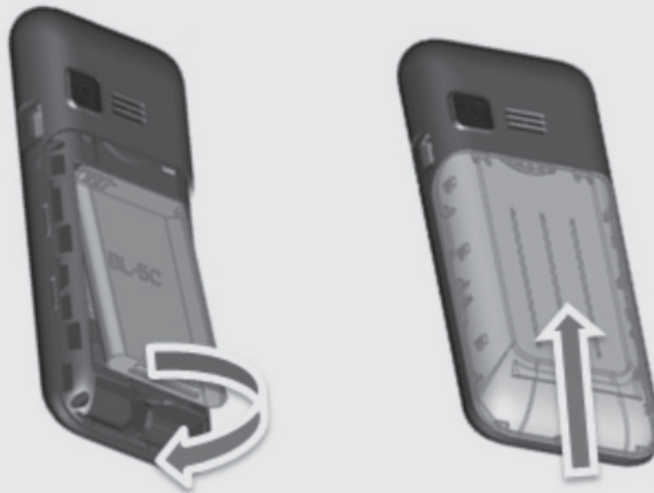




(4) Slot the SIM card into place. Always ensure that the SIM card is inserted correctly before replacing the battery.



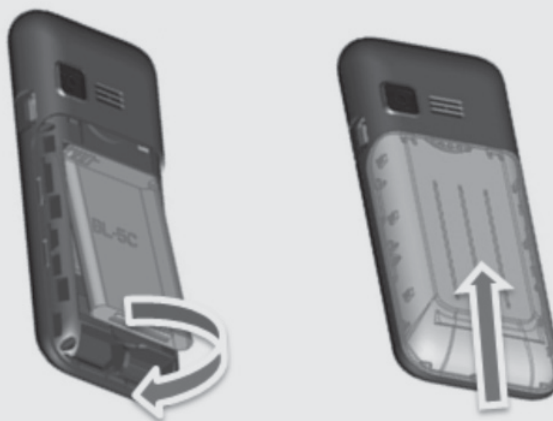
(5) Replace the battery into position.
(6) Slide the back cover Back to close.



Installing the (Micro SD) Memory card. (Optional)

Ensure that the phone is switched OFF before proceeding.

- (1) To Remove the battery cover: Slide it downwards.
- (2) Lift and Remove the battery.
- (3) Slide Open the Micro SD slot cover and Place the Memory card into the slot. The gold contacts on Memory card must be facing downwards.
- (4) Once Memory Card is inserted correctly, Close and Slide to LOCK the Micro SD slot cover.
- (5) Replace the battery into position.
- (6) Slide the back cover Back to close.



Charging the Battery (Two methods)

Method 1:

Charging using the (supplied) Mains plug and data cable

- (1) Install the battery correctly into the phone.
- (2) Insert one end of the (supplied) lead into the power adaptor and the other end into the charger Connector socket of the phone.
- (3) Connect the power adaptor to a standard power socket.
- (4) When charging is complete, Unplug the charger from the standard power socket first, and then disconnect from the phone.

Method 2:

You can also charge the phone by connecting it to a computer or USB port, using the (supplied) USB data cable.

Note: Do not receive or make calls when charging.

Power ON/OFF

Press and Hold the **[End Key]** for three seconds to switch the phone ON/OFF.

N.B. Ensure that the SIM card and Battery have been inserted correctly before switching the phone ON.

Voice Call

Making a call

On the Home Screen, enter the phone number and Press the **[Send key]** to Call.

Making a call using Contacts

Enter Contacts to choose contact. Press the **[Send key]** to Call.

Answering or Rejecting a call

Press the **[Send Key]** to Answer incoming calls.

Press the **[End Key]** to End the call.

Press the **[End Key]** to Reject the call.

Adjusting Speaker Volume during a call

Press the **[Up/Down Key]** to Adjust the Speaker Volume during a call.

SMS Setting

- In Standby Mode, Press the **[Left Soft Key]** to Enter the Main Menu.
- Select [Messages → Message Settings → SMS] to Enter the SMS settings.
- Save Sent Messages – Enables you to Save Sent Messages.
- Preferred storage – Enables you to save the SMS to the SIM card or the Phone first.

MMS Settings

- In Standby Mode, Press the **【Left Soft Key】** to Enter the Main Menu
- Select [Messages → Message Settings → MMS → Common Settings] to Enter the MMS settings.
- Preferred Storage - You can select your desired storage location for pictures, music or video files received via MMS.
- Delivery report, in Standby Mode, Press the **【Left Soft Key】** to Enter the Main Menu. Select [Messages → Message Settings → MMS → Common Settings → Sending] - Select [On] to be informed by the MMS centre that the recipient has Received and Downloaded the MMS.

Full Messages Capacity

If the message capacity is full, a flashing message-icon will appear on the top of the screen.

Input Method

This handset provides multiple input methods, including English, upper case, lower case and numeric.

Press the # key to Switch Between the different input methods. Press and Hold the * key for 3 seconds to Enter the Select Symbol screen.

Contacts

To Add a new entry

You can use both the SIM card and the handset to Store Contacts. The handset can store up to 500 phone numbers. More can be saved onto the SIM card.

On the Contacts list select <Add New Contact>

- Phone - You can Input the Contact Name & Number. You can also Set a Ringtone for the contact entry.
- Storage - The input record will save to the SIM 1, SIM 2 or Phone Memory depending on which storage location you have selected.

To View a Contact

Enter the Contacts: The phone is set to a default setting which will display all the entries in Contacts. Press **【Up Key/Down Key】** to Scroll Between the contacts.

Internet

On the Home screen, press the **[Left Soft Key]** and select **[Services → Internet Services]**.

Caution: Your network service provider may not support some functions. In order to ensure the browser works normally, please confirm that your SIM card supports and has the Internet function activated. You may incur extra charges from your network provider.

Bookmark

Enables you to Edit the Bookmarks as you please.

Recent Pages

Records the websites you have visited in the recent past.

Settings

Clear cache - **[Services → Internet Services → Settings → Browser Options → Clear Cache]**.

In order to avoid congestion and improve the web browsing speed, please clear the cache regularly.

Caution: Do not arbitrarily change the settings, or you may not be able to visit the website.

MULTIMEDIA

Camera

Enter the Main Menu **[Multimedia → Camera]** press the **[OK Key]** to Take a Photo.

Video Recording

Enter the Main Menu **[Multimedia → Video Recorder]** and Press the **[OK Key]** to Start Recording.

Audio Playing

Enter the Main Menu **[Multimedia → Audio Player]** to Activate the Audio Player.

N.B. MP3 files must be stored on the memory card in the folder called "My Music" in order to be available to play on the audio player

Adjusting the Speaker Volume, Press the **[Up/ Down Key]** on the Phone Keypad.

Sound Recording

Enter the Main Menu, Select [Multimedia → Sound Recorder] and Choose <Options → New Recording> to Start Recording.

Select <Pause> to place the Recording on hold or Select <Stop> to Stop the Recording. Once the recording has been stopped the file will be automatically saved and accessible in <Options → Recordings>.

FM Radio

On Standby Mode, plug in headset, Press the [Left Soft Key] to Enter the Main Menu, then Select [Multimedia → FM radio].

- Press [OK Key] to Deactivate the Radio
- Press [Left/Right Key] to Adjust the Radio Frequency.
- Press [Up/ Down Key] to Adjust the Volume.

N.B. Headset must be connected to listen to the FM Radio

Dual SIM setting:

Dual SIM Open - Both SIM 1 and SIM 2 will be Active.

Only SIM 1 Open - Only activates SIM 1. [SIM 2 will be deactivated, some of the SIM 2 features will be hidden].

Only SIM 2 Open - Only activates SIM 2. [SIM1 will be deactivated, some of the SIM 1 features will be hidden].

Bluetooth

- Enter the Main Menu, Select [Settings → Bluetooth] for Bluetooth Settings
- Power ON/OFF Bluetooth - This allows you to Switch the Bluetooth function ON or OFF.
- Visibility - Set to "Show" or "Hide".
If you select to "HIDE" the phone, other devices will not be able to detect your Bluetooth device even if your Bluetooth feature is turned ON.
- Search For Audio Device - You can search for the nearby Bluetooth enabled devices and connect.
- My Name - this is the name of your device. When other devices search for your phone via Bluetooth (the Bluetooth function needs to be activated), the corresponding name represents your phone (Tecmobile R30).
- Storage - In the Bluetooth menu [Advanced → Storage] this allows you to Set the Storage Location for files received via Bluetooth.

Call Settings

On the Home screen, press the **【Left Soft Key】** and select [Settings → Call Settings]. Then select SIM 1 or SIM 2 Call setting.

Call Divert

Based on the Divert Settings, Incoming calls will be forwarded to voicemail or another number.

- Divert if Busy - Calls will be Diverted to your Voicemail or the Preset Phone Number if you are on another call.
- Divert if No Answer – If calls are Not answered, they will be Diverted to your Voicemail or the Preset Phone Number.
- Divert if Unreachable – If your phone is outside of a Service Coverage Area, or switched OFF, this feature allows calls to be Diverted to the Preset Phone or your Voicemail.
- Divert all data calls - All Data Calls will be Diverted to your Voicemail or the Preset Phone Number.
- Cancel ALL Diverts: All Call Divert functions will be Cancelled.

Call Barring

This feature enables the user to Block Incoming and Outgoing calls.

Call Waiting (This requires Network Support)

- Activated - This feature will allow the Network to Alert you when there is an Incoming Call.
If you are speaking on the phone, you can Answer the New call whilst putting your Current call automatically On Hold. Alternatively, you can Reject the Incoming Call.
- Deactivate – This will Cancel the Call Waiting feature. This feature will NOT allow your Network to send Incoming Calls whilst you are currently connected to a call.
- Query Status - Select this to View the Call Waiting status.

Line Switching

Switch to Line 1 or Line 2: By default, Line 1 is selected.

Note: If you choose Line 2, dialling may fail. This depends on the implementation of the Network Operator.

Security Settings

On the Home screen, press the **[Left Soft Key]** and select **[Settings → Security Settings]**. Then select SIM 1 or SIM 2 security settings. In order to Secure the information, you can Set PIN code & PIN2 code function.

PIN code (Personal Identification Number) is for the SIM card. The original password, set by the network operator, is normally 1234 or 0000. If PIN code is Activated, the PIN password must be input each time you switch the phone ON. You can modify the PIN code to prevent your SIM card being used by others.

Caution: If you input your PIN code incorrectly three times (in succession), the SIM card will be locked automatically, and prompt you to enter a PUK code to unlock it. Consequently, you must remember the PIN code, if you modify it.

PUK code (PUK1) is made up of 8 digits. If the PIN code is entered incorrectly more than three times (in succession), The SIM will be locked and will require a PUK code to unlock it. You must enter the correct PUK code to unlock the phone. If you incorrectly input the PUK code ten times, the SIM card will deactivate. Normally, you will need to contact you network provider to obtain the PUK code. Some PUK codes are provided with the SIM card. Do not enter the PUK code if you do not know it, as this will permanently destroy the SIM card. Your network provider should be able to provide you with the PUK code.

Caution: If you do not know the PUK code, please consult your network provider. If you incorrectly input the PUK code ten times the SIM card will be destroyed.

PIN2

PIN2 code (Personal Identification Code) is required for certain functions (such as Set Fixed Number, Set Phone Fare, etc.). PIN2 code is another password provided together with the SIM card by the service provider. If input incorrectly three times (in succession), the phone will be locked until the correct PUK2 code is entered: For detailed operation, please refer to PIN code and PUK code.

Caution: If you do not know the PUK code, please consult your network provider. If you incorrectly input the PUK2 code ten times the SIM card will be destroyed.

- Change PIN - Enables you to change PIN code.
- Change PIN2 - Enables you to change PIN2 code.

Auto Lock Keypad

This function will Lock the phone Automatically in a pre-timed manner. The user can decide upon the appropriate length of time.

Phone Settings

On the Home screen, press [Left Soft Key] and select [Settings → Phone Settings].

Airplane Mode

• Activate – Select to Activate Airplane Mode. Note - NO Network Service will be available.

Schedule Power ON/OFF

You can Schedule a Time to Power ON/OFF your handset.

Alarm

Enter the Main Menu, Select [General → Alarm], now you can Set the Alarm Time, Sound and Settings.

©Tecmobile (International) Ltd. All rights reserved. tecmobile® and related trademarks, names, and logos are the property of Tecmobile (International) Ltd and are registered and/or used in Europe and other countries around the world.

Trademarks and Permissions

The Bluetooth® trademark and logos are owned by the Bluetooth SIG, Google Mail is a trademark of Google Inc.; Wi-Fi, Wi-Fi Protected Access, Wi-Fi Protected Setup, and WPA are trademarks of the Wi-Fi Alliance; Microsoft, Hotmail, Outlook, Windows Live, and Windows Media are trademarks of Microsoft Corporation; GSM and Global System for Mobile Communications are trademarks of the GSM MOU Association; JavaScript is a trademark of Oracle America, Inc. All other trademarks are the property of their respective owners and any use of such trademarks by tecmobile is under license where required.

FCC Notice

This mobile phone complies with part 15 of the FCC Rules. Operation is subject to the following two conditions: (1) This device may not cause harmful interference, and (2) this device must accept any interference received, including interference that may cause undesired operation.

This mobile phone has been tested and found to comply with the limits for a Class B digital device, pursuant to Part 15 of the FCC Rules. These limits are designed to provide reasonable protection against harmful interference in a residential installation. This equipment generates, uses and can radiate radio frequency energy and, if not installed and used in accordance with the instructions, may cause harmful interference to radio communications. However, there is no guarantee that interference will not occur in a particular installation. If this equipment does cause harmful interference to radio or television reception, which can be determined by turning the equipment off and on, the user is encouraged to try to correct the interference by one or more of the following measures:

- Re-orientate or relocate the receiving antenna.
- Increase the separation between the equipment and receiver.
- Connect the equipment into an outlet on a circuit different from that to which the receiver is connected.
- Consult the dealer or an experienced radio/TV technician for help.

Changes or modifications not expressly approved by the party responsible for compliance could void the user's authority to operate the equipment.

The antenna(s) used for this transmitter must not be co-located or operating in conjunction with any other antenna or transmitter.

Changes or modifications made to this equipment not expressly approved by Tecmobile may void the FCC authorization to operate this equipment.



Warranty Disclaimers

Although every effort is used to reduce inaccuracies and, except those required by applicable law, no warranties of any kind, either express or implied, and including but not limited to the implied warranties of fitness for a particular use or satisfactory quality, are made in relation to the contents, accuracy or reliability of this manual.

Tecmobile reserves the right to modify, change specifications or information in this manual without any consequential liability or prior notice.

Under no circumstances, except as required by applicable law, will tecmobile or any of its licensors be responsible for indirect damages or consequential loss of income or data however caused.

Disclaimer

Third party content and services may be enabled and are available through this device.

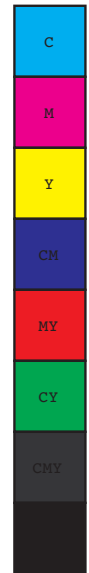
Some features and accessories referred to in this manual rely on local network settings and installed software. These may or may not automatically be accepted, in total or in a limited way, by local service and network providers. As a consequence, some descriptions may not match the features or product which you can purchase/download.

Third party content and services belong to, are the copyright of, are trademarked by and patented by their respective owners under intellectual property law. They should not be used without the express permission of the service provider or content owner and, unless given specific permission by them, you should not transmit, upload, publish, modify, copy or distribute in any way the services or content displayed through this device.

The device may contain technology, software or commodities which are subject to regulations and export laws from the US and other countries. Diversion contrary to law is prohibited.

To the fullest extent permissible by applicable law by using the applications provided with your device, you acknowledge that the application is provided "as is".

Tecmobile does not provide a warranty, make any representations, or take any responsibility for the end-user support, content or functionality of third-party applications provided with your device.



Health and Safety

RF/SAR information

The SAR limit of USA (FCC) is 1.6 W/kg averaged over one gram of tissue. Device type TEC/R30 (FCC ID: O4FR3035268605) has also been tested against this SAR limit. The highest SAR value reported under this US standard during product certification for use at the ear is 0.998 W/kg and when properly worn on the body is 0.728 W/kg.

The highest SAR value reported under EU standard during product certification for use at the ear is 0.343 W/kg and when properly worn on the body is 0.448 W/kg.

This device was tested for typical body-worn operation with the back of the handset kept 1.5cm from the body. To maintain compliance with FCC RF exposure requirements, use accessories that maintain a 1.5cm separation distance between the user's body and the back of the handset. The use of belt clips, holsters and similar accessories should not contain metallic components in its assembly. The use of accessories that do not satisfy these requirements may not comply with FCC RF exposure requirements, and should be avoided.

Batteries

Never use a charger or battery that is damaged in any way. Use the battery properly. Do not short-circuit the battery, which may damage the battery, cause heat or cause fire. Do not dispose of batteries in high temperature or in a fire as they may explode. Return the waste battery to the dealer or appointed recycle locations.

Do not dispose as household waste. Battery charging time depends on the remaining battery charge, the type of battery, and the charger used. The battery can be charged and discharged hundreds of times, but it will gradually wear out. When the operation time is noticeably shorter than normal, it is time to replace the battery with a new one.

Use only original or approved chargers and batteries. Unplug the charger from the electrical plug and the device when not in use. Do not over charge as this will damage the battery and shorten its life. Leaving the battery in extreme hot or cold places will reduce the capacity of the battery. Li-ion batteries are particularly affected by temperatures below 0°centigrade.



Operating environment

Remember to follow any special regulations in force in the area you are in, and always switch off your phone whenever it is forbidden to use it, or it may cause danger. When connecting the phone or any accessory to another device, read its user's guide for detailed safety instructions. Do not connect incompatible products. It is recommended that the equipment should only be used in the normal operating position (held to your ear with the antenna pointing over your shoulder) for your satisfactory operation of the equipment and for the safety of personnel. Do not expose the equipment to temperature below -10° or above 45° centigrade. Keep the phone in an appropriate holder while you are driving. Do not put it on a seat or places where it could fall when driving. To ensure safe driving and avoid accidents, do NOT use the phone when driving.

Medical devices

Ensure that you switch OFF your phone in areas near electronic medical equipment that obviously require the phone to be switched OFF: (Such as heart pacemakers, hearing aids, etc). Most medical devices can shield the phone's RF signal, but some cannot. If you have any doubts, or need to find out more, please consult your doctor or medical device manufacturer.

Pacemakers

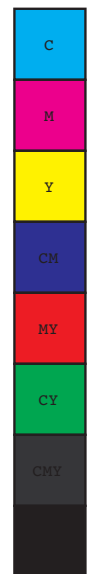
Pacemaker manufacturers advise the distance between your phone and heart pacemaker should be 6 inches (15.3 cm) at least, otherwise the phone could interfere with the pacemaker.

People fitted with a pacemaker should note the following:

- Always keep a distance (at least 6 inches) between the phone and the pacemaker, when the phone is switched ON.
- Do not carry the phone in a breast pocket
- * Listen to the phone using the ear which is farther from the pacemaker.

Caution:

Please switch OFF your phone if you feel there is interference, and consult the doctor as soon as you can.





Hearing aids

Mobile phones may cause some interference with some hearing aids. If so, please consult your hearing aid manufacturer

Excessive sound pressure from earphones and headphones

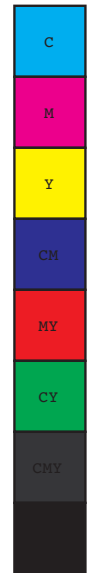
can cause hearing loss.

Other safety information

- If you do not use your phone for extended periods, please switch it OFF and remove the battery to save energy.
- Do not have the volume excessively loud while using the phone, as this could impair your hearing.
- Repairs should only be undertaken by an approved agent.
- Avoid using phone cases that have magnetic closures: These can affect the performance and life of the phone and its components.
- If you or your family have a medical record of dizziness or epilepsy, please consult your doctor first, if you want to play phone games or use the torch.

Emergency calls

This phone, like any wireless phone, operates using radio signals, which cannot guarantee connection in all conditions. Therefore, you should never rely solely on any wireless phone for essential communications like medical emergencies. To make or receive calls, the phone must be switched on and in a service area with adequate signal strength. To make an emergency call, enter the local emergency number in standby mode and press [The Send Key] to call.



Care and maintenance

- Your phone is a product of superior design and craftsmanship and should be treated with care. The suggestions below will allow you to enjoy this product for many years.
- Due to the used enclosure material, the GSM mobile phone shall only be connected to a USB interface of version 2.0 or higher. The connection to so called power USB is prohibited.□□
- The adapter shall be installed near the equipment and shall be easily accessible.
- CAUTION RISK OF EXPLOSION IF BATTERY IS REPLACED BY AN INCORRECT TYPE. DISPOSE OF USED BATTERIES ACCORDING TO THE INSTRUCTIONS
- Keep your phone away from small children and pets. They may accidentally damage the phone or choke on small parts.
- Keep the phone dry and avoid liquids that corrode the phone.
- Do not use the phone with a wet hand, which may cause an electric shock.
- Do not store the phone in hot areas, which can shorten the life of electronic devices, damage batteries, or melt accessories.
- Do not store the phone in cold areas. When the phone warms up to its normal operating temperature, moisture can form inside the phone, which may damage the phone's electronic circuit boards.
- Do not expose your phone to hot sunlight which may over-heat your phone.
- Do not place your phone near inflammable liquids, gas or explosive substances.
- Do not drop or knock the phone. Rough handling can break internal circuit boards.
- When cleaning the phone, use a damp or anti-static cloth. Do not use a dry or static cloth. Do not use chemicals such as cleaning solvents to clean the surface. Switch OFF the phone first before cleaning.
- Do not paint the phone. Paint can prevent proper operation.
- If your phone has a torch, do not use it too close to the eyes. This may cause damage to eyes.
- If the phone or battery gets wet and the label on the phone is damaged, phone repairs are no longer guaranteed by the manufacturer's warranty, even if the warranty for your phone has not expired.

Box

Contents

- Handset
- Mains Plug
- Data Cable
- Headset
- User Guide

www.tecmobile.com

ITEM NO: TM/R30 MODEL NO : TM/R30

CE 0700



Made In PRC

