

Analog DECT Phone



Manual
V 1.00

1 Over view

This phone is a full-feature telephone that provides voice communication. Read this QIG carefully to learn how to operate this product and take advantage of its features.

Package Contents

When unpacking the phone, ensure all the following items are present and undamaged. If anything appears to be missing or broken, contact your dealer for a replacement.

- 1. Base Unit
- 2. Cordless Handset
- 3. Stand
- 4. Battery
- 5. AC Adaptor
- 6. 10-feet, 4 wire Line Cord (with RJ-11 connector)
- 7. Quick Installation Guide (This document)

2 Product Description

The following contains important information to help you familiarize with the functions of the phone.

Front View



1. Handset keys

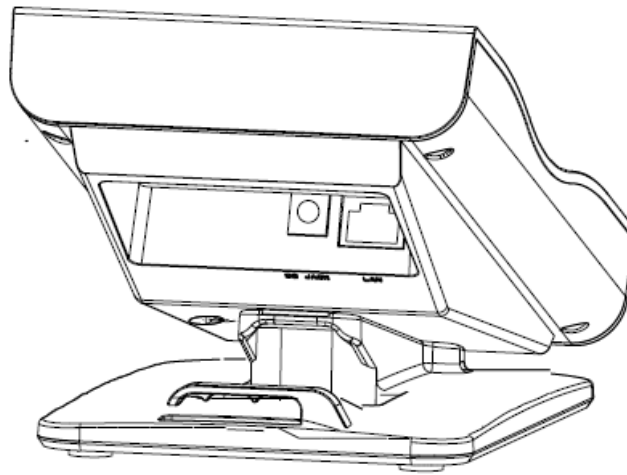
	Name	Description
1	Message waiting indicator	To indicate an incoming call or unread messages.
2	Display screen	To display calls and status information.
3	Speed dial keys	Press to dial the preset number.

	Name	Description
4	LINE 1 / LINE 2	To indicate a line been used as the following status: - Idle: No LED indication. - In call: Red LED. - In on-hold call: Blinking red LED.
5	End key	Press to end a phone call
6	Alphanumerical keys	Press these keys to enter phone numbers or texts.
7	Function keys	
	Hold	Press to put an active call on hold.
	Speaker	Press to activate the speakerphone for hands free conversations.
	Volume	Press to increase or decrease the volume of the ringer tone, handset, or speakerphone.

2 Base unit keys

	Name	Description
1	Message waiting indicator	To indicate an incoming call or unread messages.
2	Speed dial keys	Press to dial the preset number.
3	LINE 1 / LINE 2	To indicate a line been used as the following status: - Idle: No LED indication. - In call: Red LED. - In on-hold call: Blinking red LED.
4	End key	Press to end a phone call
5	Alphanumerical keys	Press these keys to enter phone numbers or texts.
6	Function keys	
	Hold	Press to put an active call on hold.
	Speaker	Press to activate the speakerphone for hands free conversations.
	Volume	Press to increase or decrease the volume of the ringer tone or speakerphone.

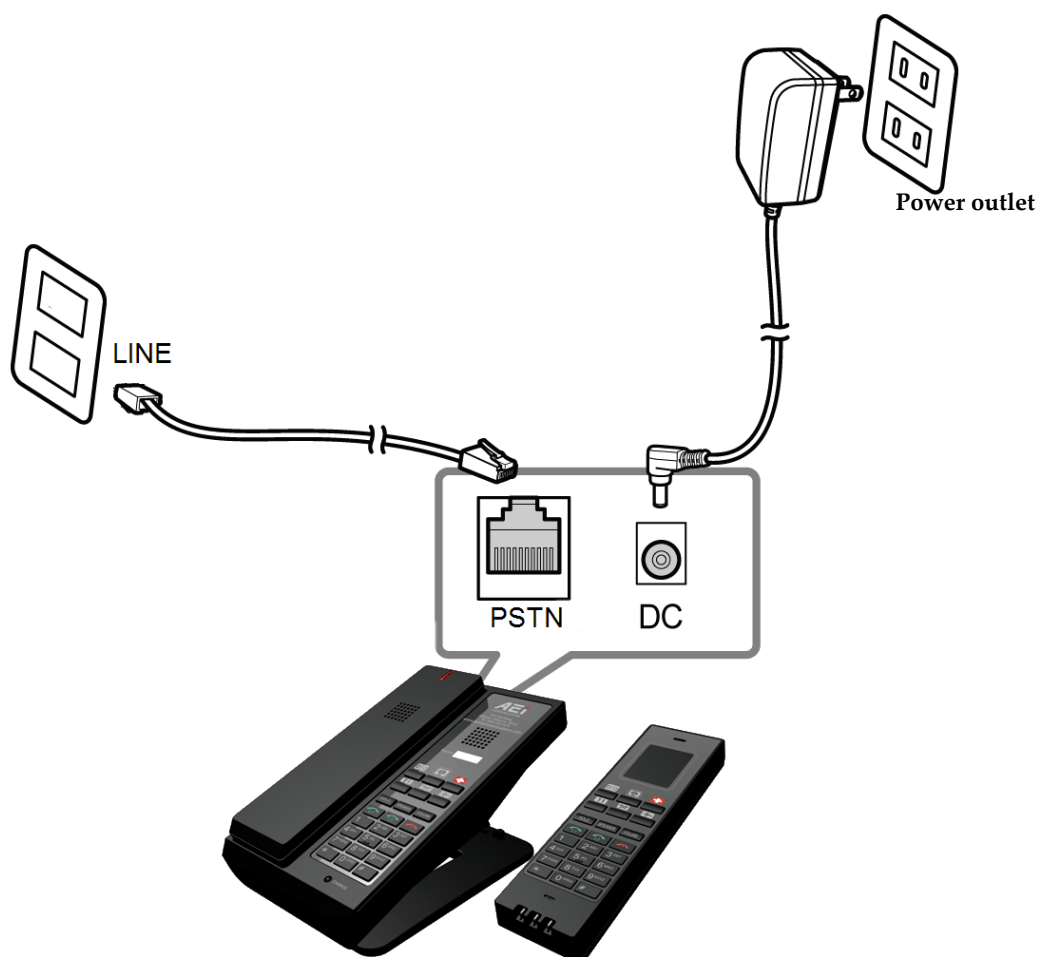
Back View



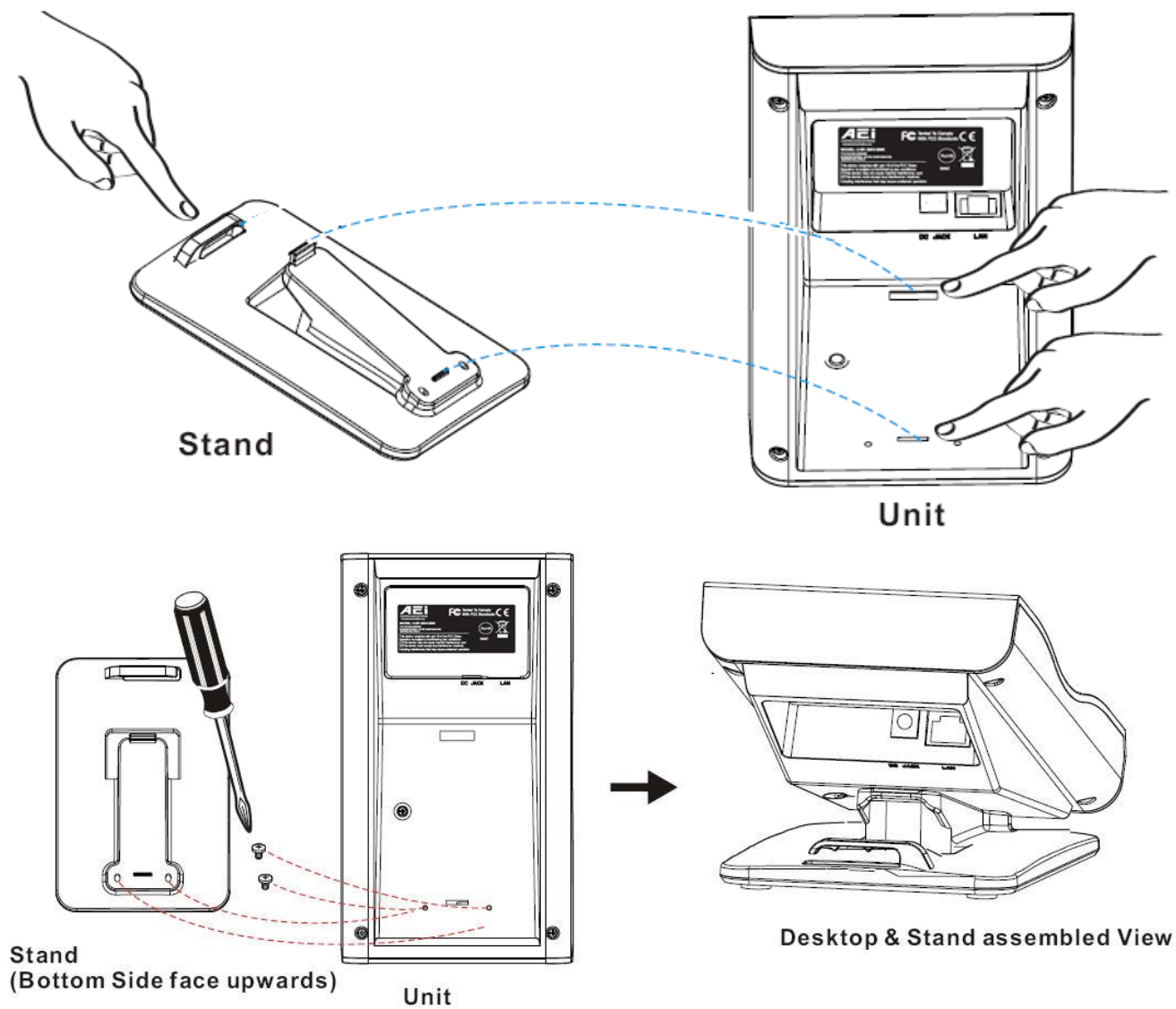
NO.	Name	Description
1	PSTN line port	Connects to PSTN line.
2	DC 6V Power jack	Connects to AC power adapter.

Connecting the Phone

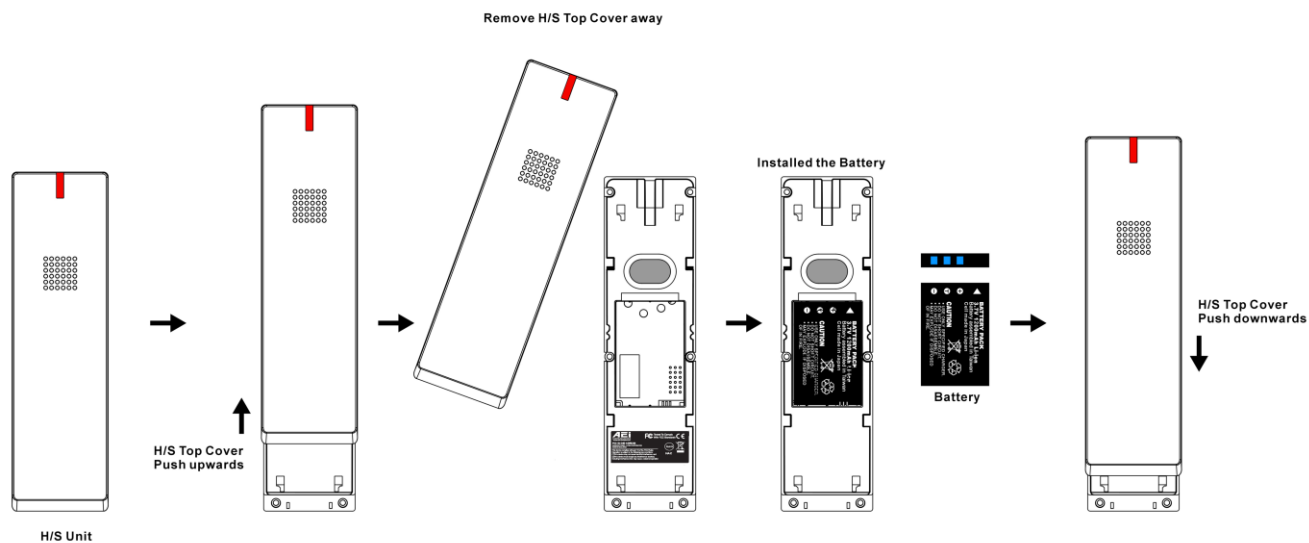
The following illustration shows how to connect the power and PSTN ports of DECT phone.



The following illustration shows how to install the phone and stand.



The following illustration shows how to install the handset and battery.



3 Operations

Answering a Call

An incoming call is indicated by a ringing tone and a flashing indicator at the top of both handset and base units. You can answer the call by doing one of the followings:

- Pick up the **handset** to answer the call.
- Press the **Line (Line1/Line2)** key on the base or handset to answer the call.

Making a Call

Dialing with the Keypad

- Enter the telephone number with the alphanumeric keypad and the call will start automatically.

Using the Speed dial keys

You can use the 6 pre-assigned speed dial hotkeys, to configure the most commonly dialed numbers. Use the function to dial a number quickly, instead of keying in a complete number.

To call a number using speed dialing, follow the steps below:

- Press the speed dial hotkey that has been pre-assigned to the phone number and the call will start automatically.

Call Options

While a call is in progress, a number of additional options are available.

Using the Speaker Phone

For hands free operation, you can use the built-in speaker to talk on the phone. To use the speakerphone, follow the steps below:

- While talking on the phone, press the **Speaker** key on the phone to enable the Speakerphone function.
- Press Speaker key again to terminate the call.

Putting a Call on Hold

You may want to put a call on hold temporarily while doing some work or attending to a second incoming or outgoing call. To put a call on hold, do one of the following:

- Press the **Hold** key on the phone to put the call on hold.
- When you receive a second call, press the next available LINE key to attend to the new call, and the first call will be put on hold automatically.

Charging the Handset Battery

You would need to charge the handset battery before using the handset.

- Install the battery into the handset.
- Place the handset onto the base unit and base unit will start to charge the handset automatically.
- The charging indicator lights up in red during charging progress. The LED goes off after the handset battery is fully charged.

Checking Voice Messages

If the **message waiting indicator** at top of handset or base unit lights up in red, it indicates that there are one or more new messages in voicemail box.

- Press the **VOICE MAIL** key on the phone to retrieve voice messages.

(An external ITSP or PBX must support voice message feature. And you need to set a voice message code before using the voice mail feature.)

FCC Interference Information

This device complies with Part 15 of the FCC Rules. Operation is subject to the following two conditions: (1) This device may not cause harmful interference; and (2) This device must accept any interference received, including interference that may cause undesired operation.

This equipment has been tested and found to comply with the limits for a Class B digital device, pursuant to Part 15 of the FCC Rules. These limits are designed to provide reasonable protection against harmful interference in a residential installation.

This equipment generates, uses, and can radiate radio frequency energy and, if not installed and used in accordance with the instructions, may cause harmful interference to radio communications. However, there is no guarantee that interference will not occur in a particular installation.

If this equipment does cause harmful interference to radio or television reception, which can be determined by turning the equipment off and on, the user is encouraged to try to correct the interference by one or more of the following measures:

- Reorient or relocate the receiving antenna (that is, the antenna for radio or television that is “receiving” the interference).
- Reorient or relocate and increase the separation between the telecommunications equipment and receiving antenna.
- Connect the telecommunications equipment into an outlet on a circuit different from that to which the receiving antenna is connected

FCC RF Radiation Exposure Statement

The installation of the base unit should allow at least 20 centimeter between the base and persons to be in compliance with FCC RF exposure guidelines. For body worn operation, the portable part (handset) has been tested and meets FCC RF exposure guidelines.

This device must not be co-located or operating in conjunction with any other antenna or transmitter. The changes or modifications not expressly approved by the party responsible for compliance could void the user's authority to operate the equipment.



FCC Tested To Comply
With FCC Standards



FCC ID:O4E-AGR8206

**MANUFACTURED : G-TEK CORPORATION
MADE IN MALAYSIA**

This device complies with part 15 of the FCC Rules.
Operation is subject to the following two conditions:
(1)This device may not cause harmful interference, and
(2)This device must accept any interference received,
including interference that may cause undesired operation



HAC



FCC Tested To Comply
With FCC Standards



MODEL: AGR-8206-SMK

**FCC ID:O4E-AGR8206
MANUFACTURED : G-TEK CORPORATION
MADE IN MALAYSIA**

This device complies with part 15 of the FCC Rules.
Operation is subject to the following two conditions:
(1)This device may not cause harmful interference, and
(2)This device must accept any interference received,
including interference that may cause undesired operation



HAC





AEI COMMUNICATIONS CORP.

1001 Broadway, Millbrae, California 94030

Direct: (415) 706-2907 ,Tel: (650) 552-9416

Analog DECT Phone for Desktop/Bedside

Model: AGR-8206-SMK/AGR-8106-SMK

1. Esthetic Design

2012/03 v0.1

AGR-8206-SMK



AGR-8106-SMK





AEI COMMUNICATIONS CORP.

1001 Broadway, Millbrae, California 94030

Direct: (415) 706-2907 ,Tel: (650) 552-9416

Analog DECT Phone for Desktop/Bedside

Model: AGR-8206-SMK/AGR-8106-SMK

2. Features / Software Specifications

Handset			
Keys		AGR-8206-SMK	AGR-8106-SMK
		<ul style="list-style-type: none">• Dial keys (0~9, *, #)• Line keys Line1, Line2, END• Function keys Hold, Speaker, Volume, 6 speed dial keys	<ul style="list-style-type: none">• (0~9, *, #)• Line, END• Mute, Speaker, Volume, 6 speed dial keys
Phone Features		<ul style="list-style-type: none">• One or Two Lines• Call Hold and resume(AGR-8206-SMK only)• Handset, Speaker, and Ringer volume control• Full duplex speaker phone	<ul style="list-style-type: none">• 6 programmable speed dials• Mute and resume(AGR-8106-SMK only)• Red color message waiting indicator for ringing, charging, and message waiting
Display Contents		<ul style="list-style-type: none">• Main logo• Speed dial icon• Battery status: power level, charging status	<ul style="list-style-type: none">• DECT signal status• Line status• Firmware Version
DECT Standard		<ul style="list-style-type: none">• DECT / CAT iq1.0 compatible• Radio Frequency Range : 1880~1930 MHz• EU : 1881.792(ch0)~1897.344(ch9) 10 Channels• US : 1921.536(ch0)~1928.448(ch4) 5 Channels	<ul style="list-style-type: none">• Channel Space : 1728 KHz• Bit rate : 1150 Kbit/s• Modulation : GFSK• Voice coding : 16 Kbit/s
Base			
Keys		AGR-8206-SMK	AGR-8106-SMK
		<ul style="list-style-type: none">• Dial keys (0~9, *, #)• Line keys Line1, Line2 with LED, END• Function keys Hold, Speaker, Volume, 6 speed dial keys	<ul style="list-style-type: none">• (0~9, *, #)• Line with LED, END• Mute, Speaker, Volume, 6 speed dial keys
Phone Features		<ul style="list-style-type: none">• One or Two Lines• Call Hold and resume(AGR-8206-SMK only)• Speaker, and Ringer volume control• Full duplex speaker phone	<ul style="list-style-type: none">• 6 programmable speed dials• Mute and resume(AGR-8106-SMK only)• Red color message waiting indicator for ringing and message waiting
DECT Standard		<ul style="list-style-type: none">• DECT / CAT iq1.0 compatible• Radio Frequency Range : 1880~1930 MHz• EU : 1881.792(ch0)~1897.344(ch9) 10 Channels• US : 1921.536(ch0)~1928.448(ch4) 5 Channels	<ul style="list-style-type: none">• Channel Space : 1728 KHz• Bit rate : 1150 Kbit/s• Modulation : GFSK• Voice coding : 16 Kbit/s

3. Hardware Specifications

Handset	
Display	<ul style="list-style-type: none">• 1.8" TFT color display
LED Indications	<ul style="list-style-type: none">• Message waiting indicator and keypad backlight
Power	<ul style="list-style-type: none">• 3.7v / 900 mAh Li-ion battery• Charging Time : 5 hrs• Standby Time : 240 hrs• Talking Time: 9 hrs
Contact pins	<ul style="list-style-type: none">• 3 contact pins for charging, hook detect and auto-pairing
Size and Weight	<ul style="list-style-type: none">• Dimensions: 175mm(L) x 49mm(W) x 24mm(H), Weight: 180g(battery included)
Base	
LED Indications	<ul style="list-style-type: none">• Line keys, Hold/Mute, Speaker keys, Message waiting, Handset charging indicators, and keypad backlight
Power	<ul style="list-style-type: none">• AC adaptor: Input: 100 ~ 240 VAC, Output: 6V / 1A



AEI COMMUNICATIONS CORP.

1001 Broadway, Millbrae, California 94030

Direct: (415) 706-2907 ,Tel: (650) 552-9416

Analog DECT Phone for Desktop/Bedside

Model: AGR-8206-SMK/AGR-8106-SMK

Jacks	• RJ14 x 1, DC jack x1
Contact pins	• 3 contact pins for charging, hook detect and auto-pairing
Line cord	• 10 feet x 1
Size and Weight	• Dimensions:193mm(L) x109mm(W) x 98mm(H), Weight: 450g

3. Regulatory	USA	EU
EMI	FCC Part 15B, 15D	EN301489-11-6
Safety		EN 60950-1
EMC		EN 301406
PSTN	Part68	TBR21
RoHS	• Comply with Directive 2002/95/EC RoHS (as amended by Commission Decision 2005/613/EC)	
Temperature	<ul style="list-style-type: none">• Storage: Low Temperature at -10°C. High Temperature at +60°C• Operating: Low Temperature at 0°C. High Temperature at +40°C.	