



## ACR South Africa

### Production Electrical Test Plan

**Company :** ACRSA a division of *CHELTON AVIONICS (Pty) Ltd.*  
**Document Title :** *PETP: SART Production Electrical Test Plan*  
**Document Number :** *PH0200-0001-DPP*  
**Issue :** One  
**Release Date :** *17.07.2000*  
**Change Note No. :** *First issue*  
**Originator :** *CP Joubert*  
**Approval (CEO) :** DR DF Frost

#### Applicable Documentation

Document numbers	Document titles
ISO 9001:1994	Quality Systems - Model for quality assurance in design, development, production, installation and servicing
PH0000-0053-DQM	ACRSA TelluSART Quality Plan
PH0000-0054-DQM	ACRSA TelluSART MRI

#### DISTRIBUTION LIST

<u>Copy No.</u>	<u>Holder</u>
Master	Quality Manager
One	Production Manager
Two	ACR Electronics (Florida) – Information Copy ✓

**AMENDMENT RECORD**

This document is issued under the control of the Quality Manager, *ACRSA*. Amendments will only be circulated to registered holders recorded on the distribution list held by the Quality Manager. Unauthorized copies of this document may not be produced. Any queries or requests for controlled copies are to be addressed in writing to the Quality Manager of *ACRSA*. Holders are responsible for incorporating amendments, to the manual(s) they control, immediately they receive them. After incorporation, the instruction sheet should be signed by the registered holder and returned to the Quality Manager, *ACRSA*, and the amendment entered below.

Amendment No.	Page Nos.	From Issue	To Issue	Date	Incorporated By
ORIGINAL =Halleria PH0200-008-2	ALL	-	1	17.07.2000	CP Joubert

## TABLE OF CONTENTS

<u>Section</u>	<u>Page</u>
<b>1. SCOPE</b>	<b>4</b>
<b>2. APPLICABLE DOCUMENTS</b>	<b>4</b>
<b>3. TEST REQUIREMENTS</b>	<b>4</b>
3.1 TEST SEQUENCE	4
Figure 1: Initial Manufacturing Process Flow Diagram for TelluSART MK II	5
Figure 2: Final Manufacturing Process Flow Diagram for TelluSART MK II	56

## 1. SCOPE

This document contains a flow diagram showing the various test procedures applied to the applicable assemblies and sub-assemblies during the manufacturing process of the SART Type 3A.

## 2. APPLICABLE DOCUMENTS

[Ref. 1]	PATS for SART Logic 1 and Logic 2 Assembly	PH0200-0027-DPA
[Ref. 2]	PATS for SART Microwave Bias Assembly	PH0200-0026-DPA
[Ref. 3]	PATS for SART Electronics MK II Final Assembly	PH0200-0064-DPA
[Ref. 4]	PATS for SART Battery Assembly P-Type	PH0200-0067-DPA

## 3. TEST REQUIREMENTS

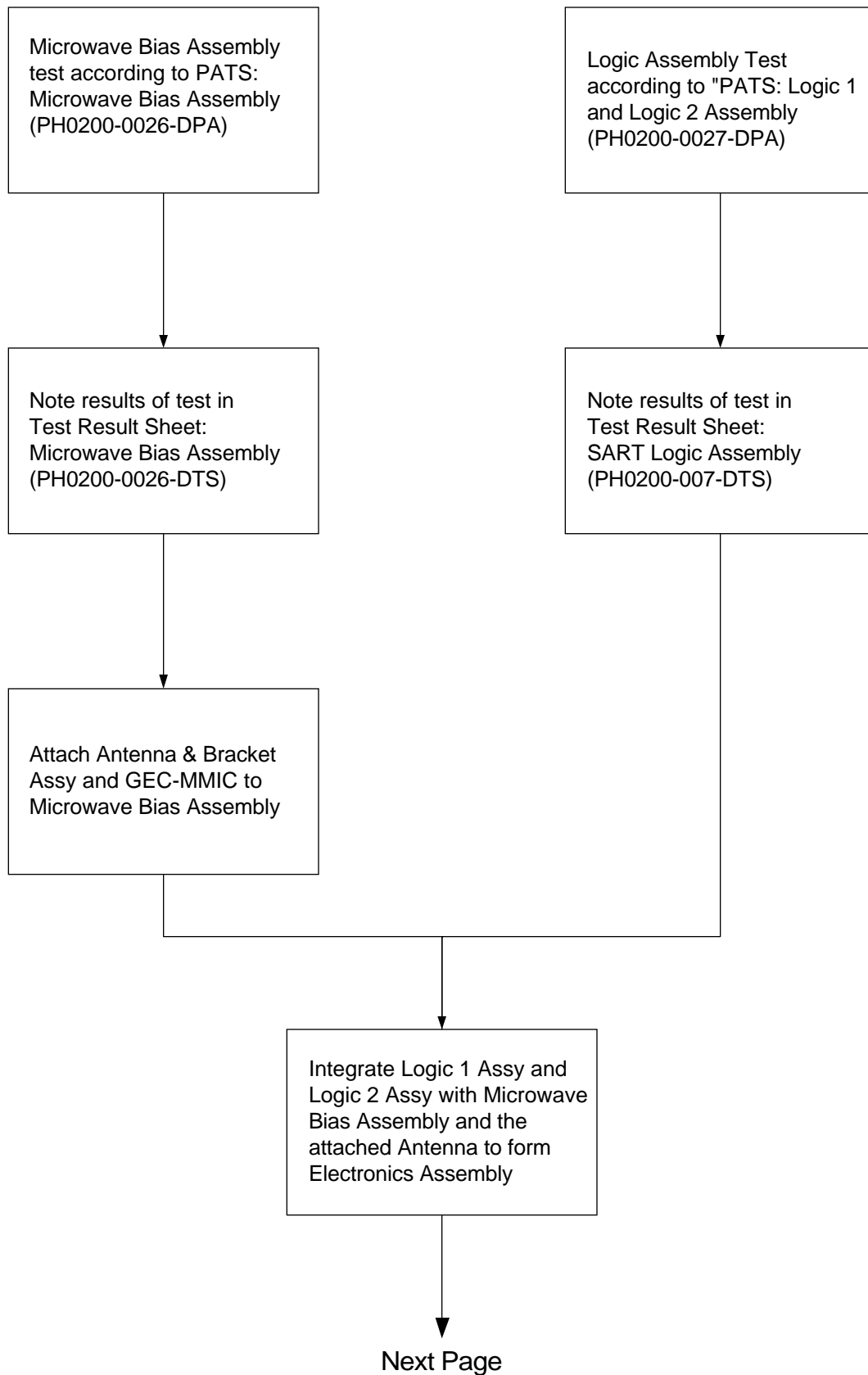
All the acceptance tests specified should be carried out in accordance with the procedures detailed in the documents [Ref. 1] to [Ref. 4].

### 3.1 Test Sequence

The test sequence is specified in:

Figure 1 – Initial Manufacturing Process Flow Diagram for TelluSART MK II, and

Figure 2 – Final Manufacturing Process Flow Diagram for TelluSART MK II.

**Figure 1: Initial Manufacturing Process Flow Diagram for TelluSART MK II Assembly**

**Figure 2: Final Manufacturing Process Flow Diagram for TelluSART MK II Assembly**