



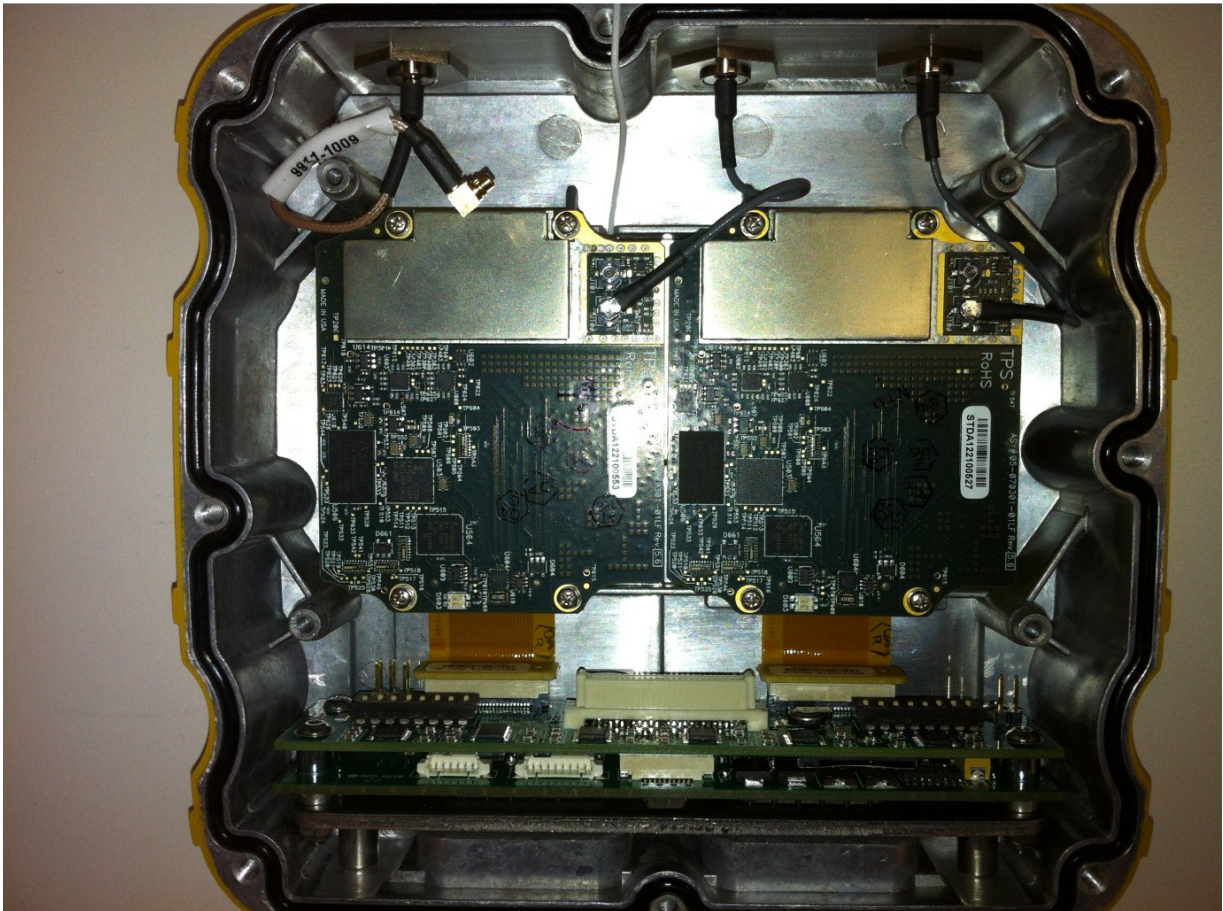
INTERNAL PHOTOGRAPHS



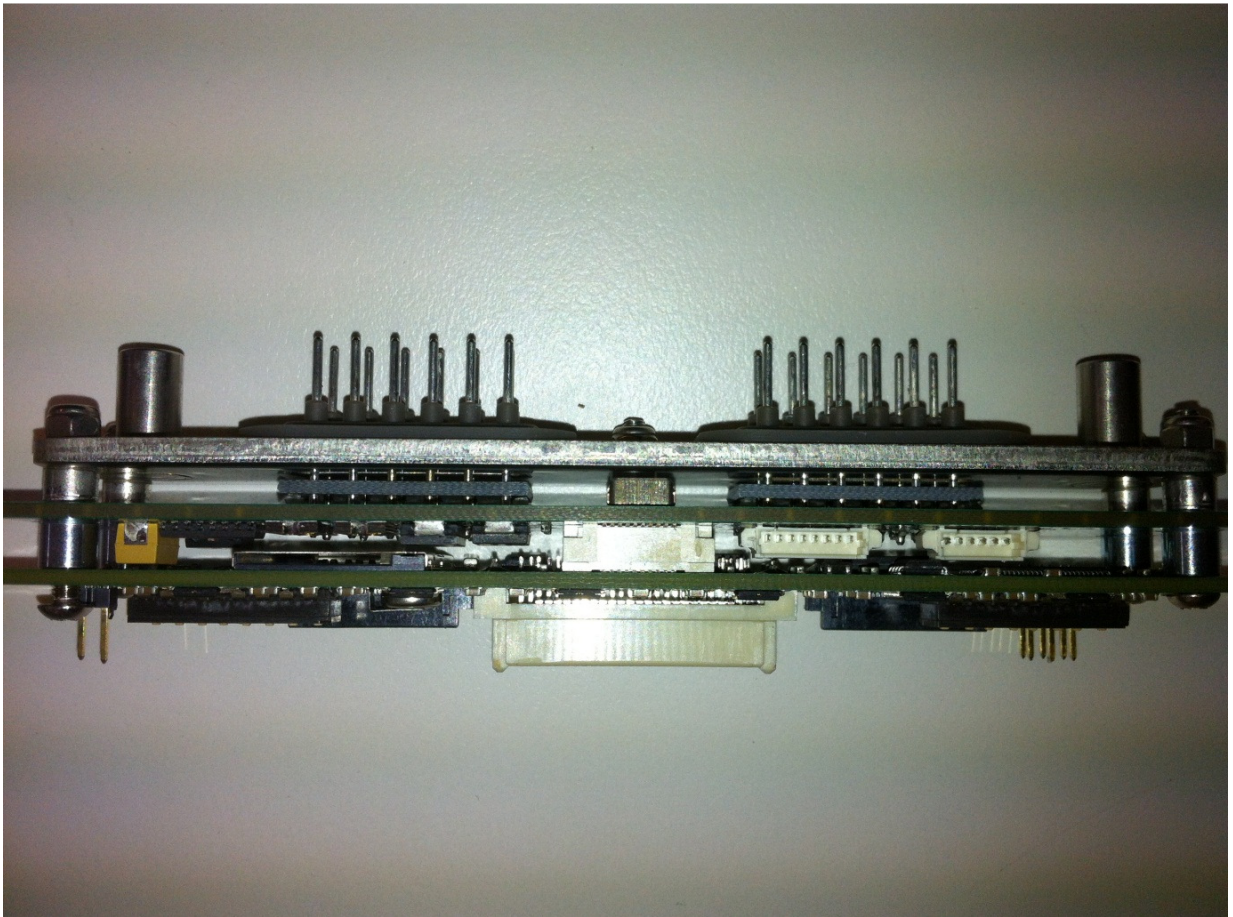
SL-100 with Lid Removed
Top Side of SL-R3 board Visible



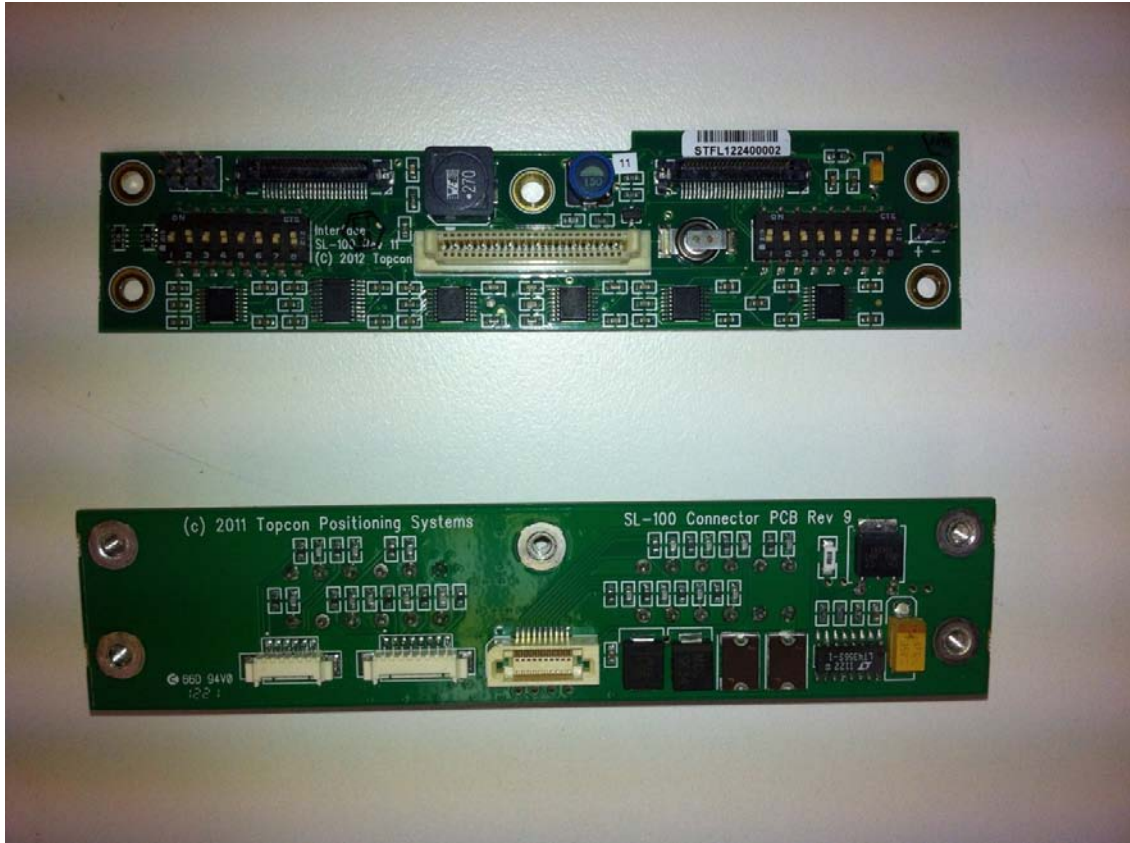
Underside of SL-R3 Board



SL-100 with the SL-R3 board removed
Photo shows the 2 optional GPS boards installed



Connector and Interface Board assembly removed from device



Interface board Side 1 at top of Photo
Connector Board Side 1 at bottom of Photo



Interface board Side 2 at top of Photo
Connector Board Side 2 at bottom of Photo