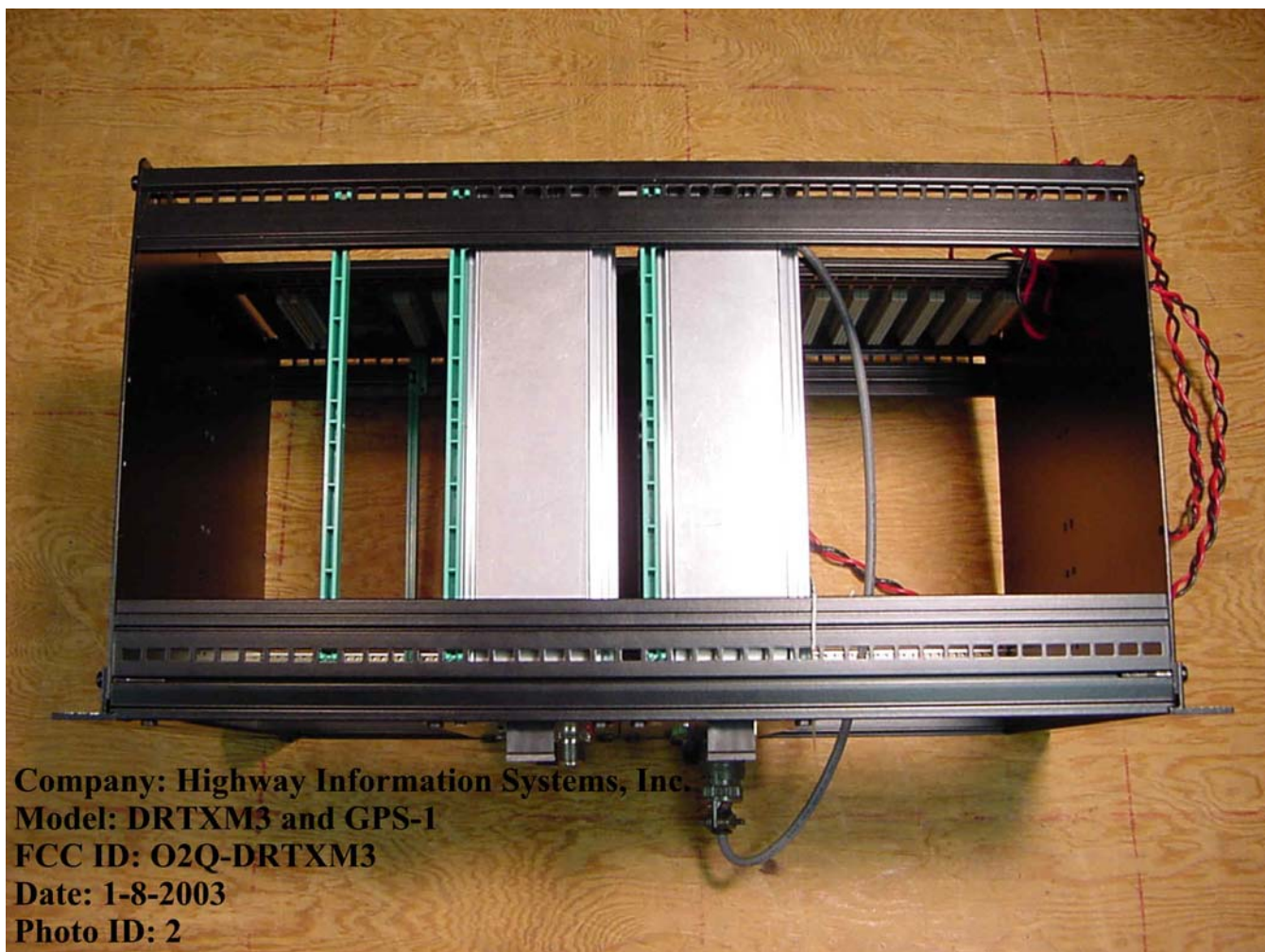
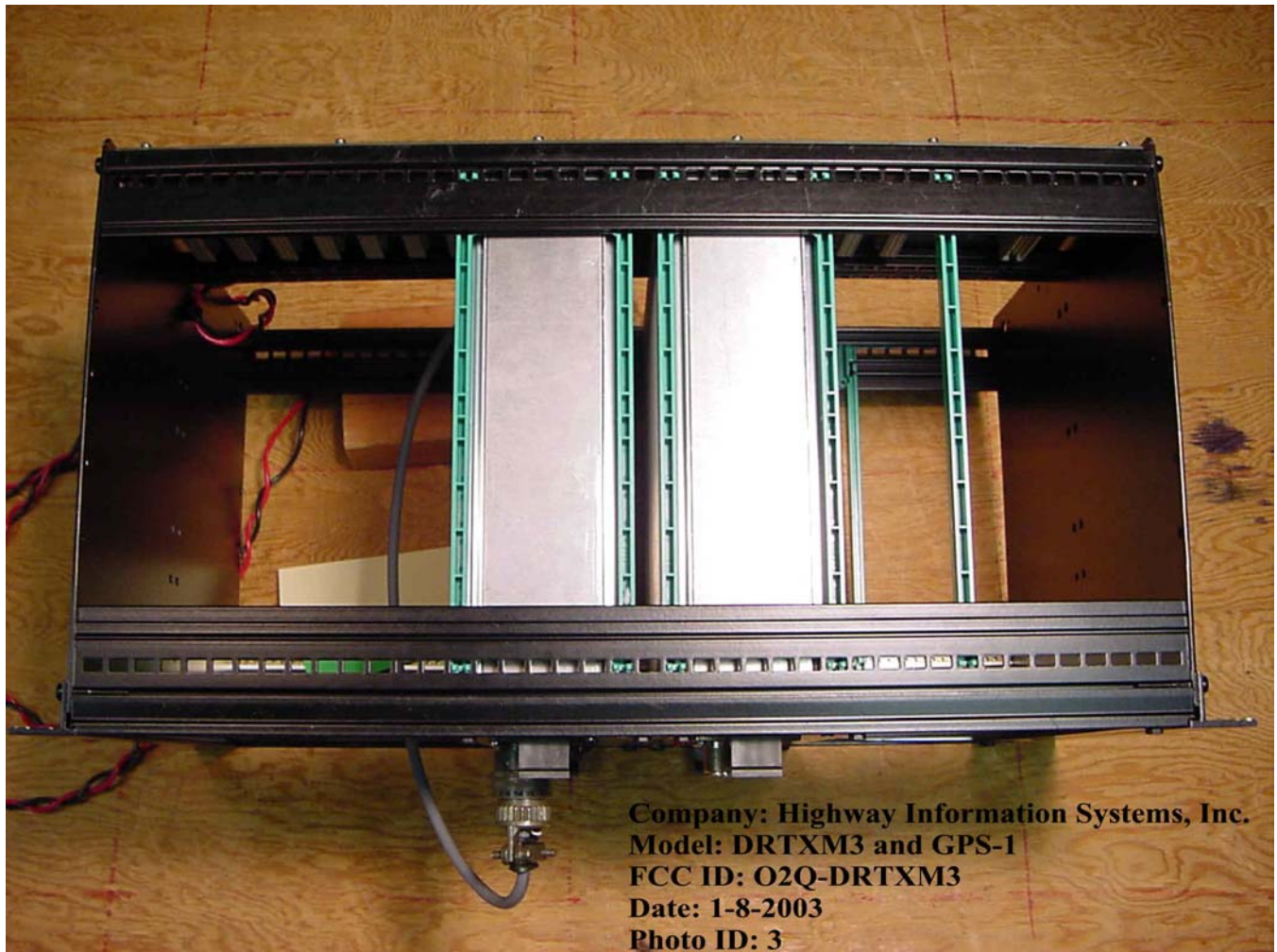


Company: Highway Information Systems, Inc.
Model: DRTXM3 and GPS-1
FCC ID: O2Q-DRTXM3
Date: 1-8-2003
Photo ID: 1

Front of Chassis containing the DRTXM3 and the GPS-1

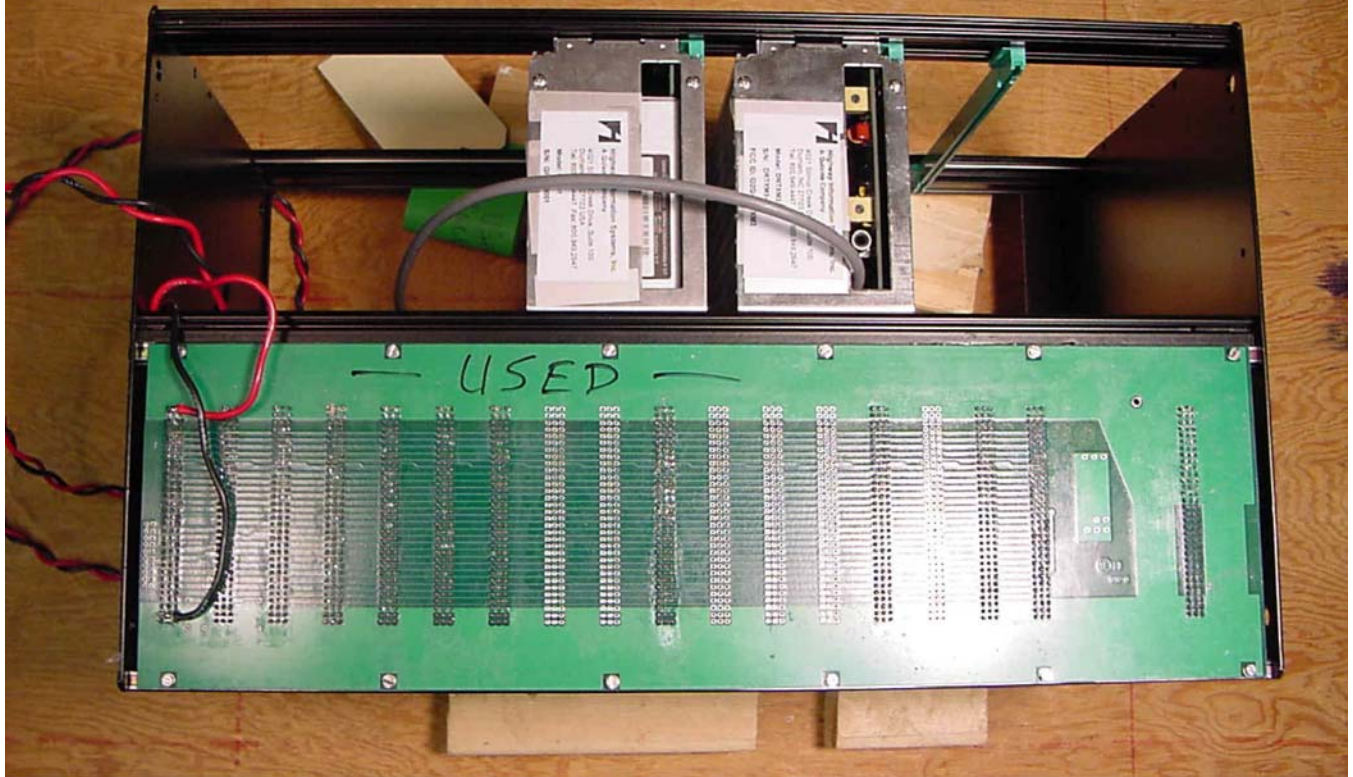


Top of Chassis containing the DRTXM3 and the GPS-1

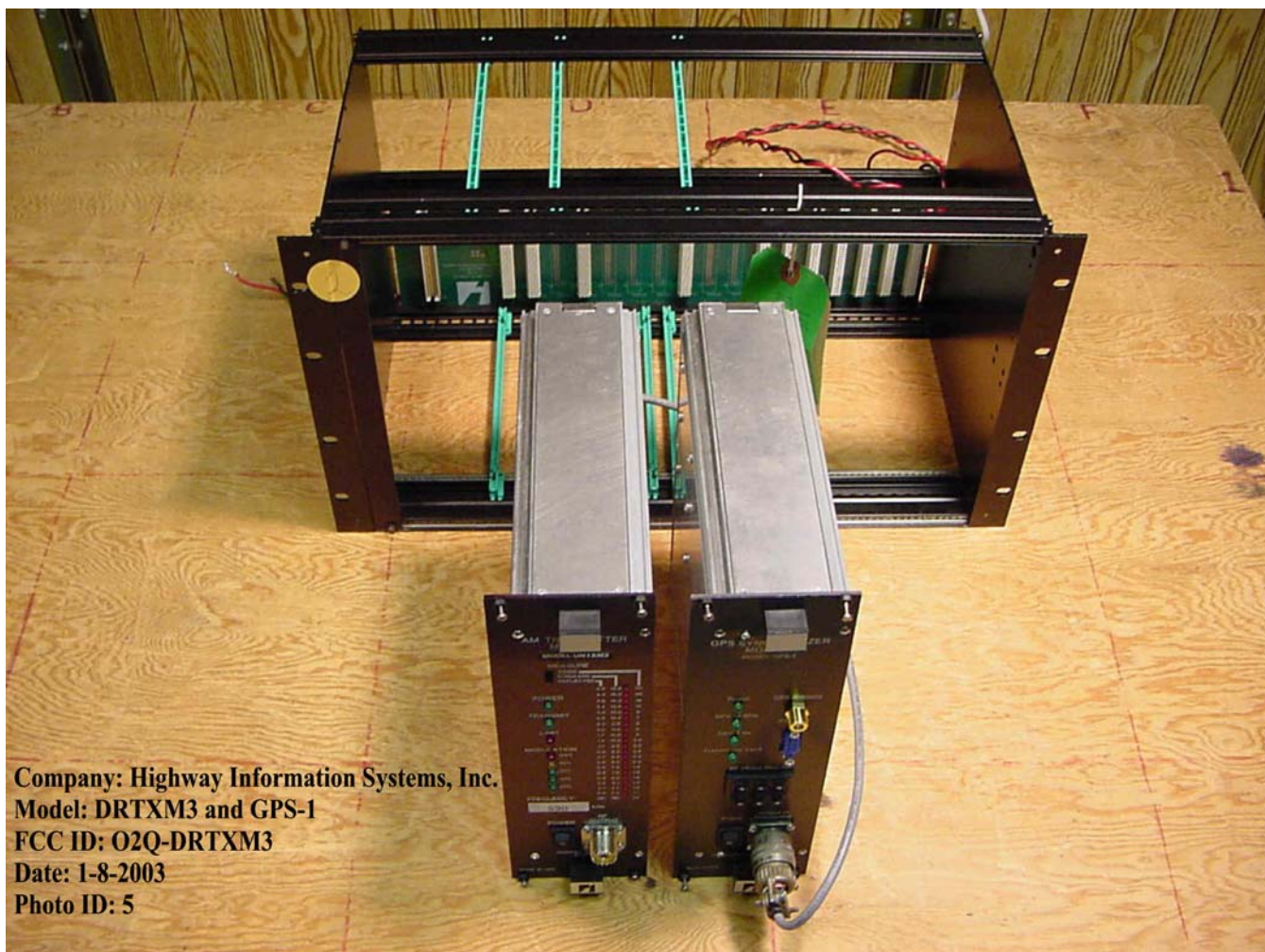


Bottom of Chassis containing the DRTXM3 and the GPS-1

Company: Highway Information Systems, Inc.
Model: DRTXM3 and GPS-1
FCC ID: O2Q-DRTXM3
Date: 1-8-2003
Photo ID: 4



Back of Chassis containing the DRTXM3 and the GPS-1



DRTXM3 and GPS-1 are removed from Chassis

Company: Highway Information Systems, Inc.

Model: DRTXM3 and GPS-1

FCC ID: O2Q-DRTXM3

Date: 1-8-2003

Photo ID: 6



DRTXM3 is connected to the GPS-1

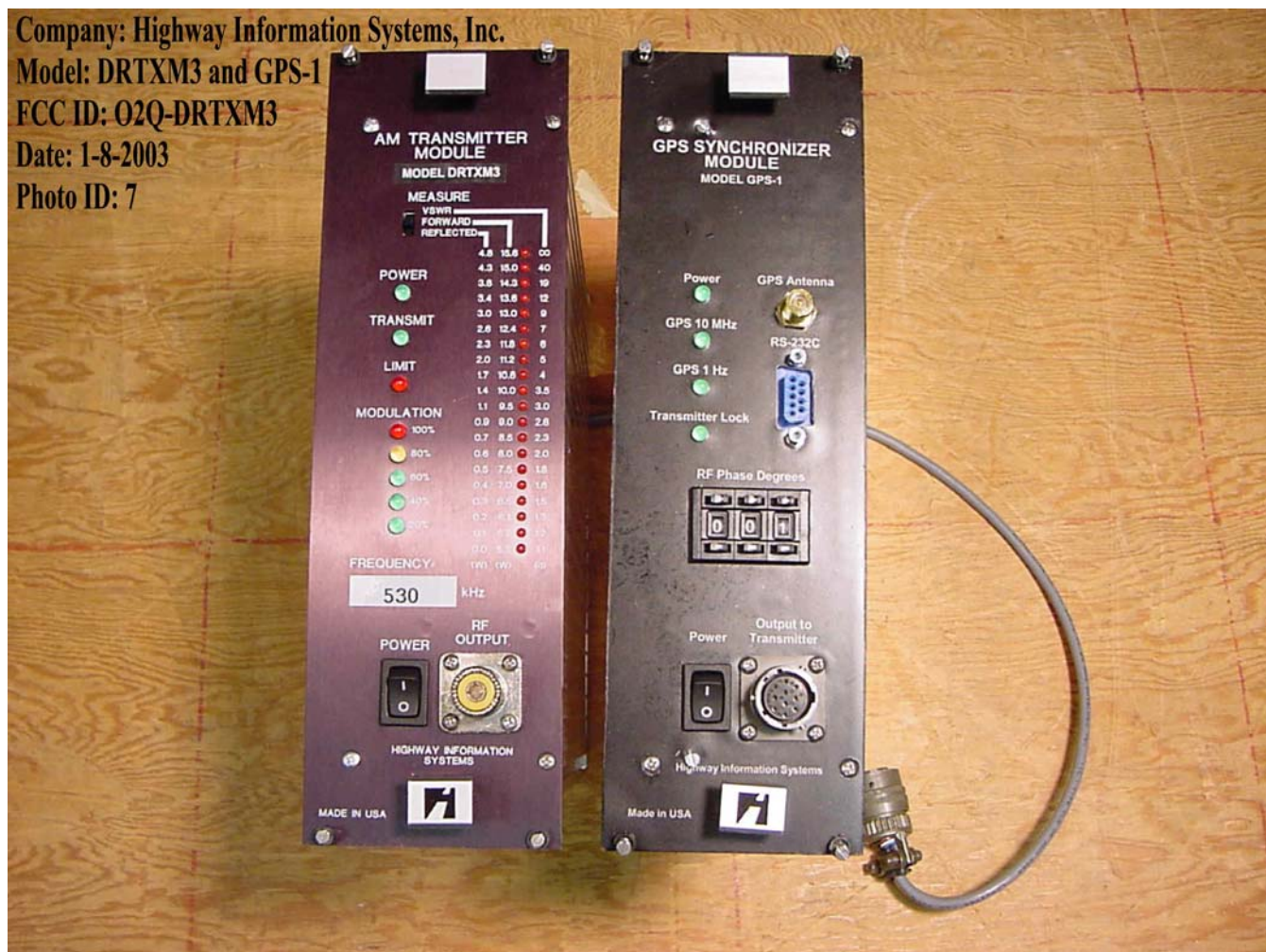
Company: Highway Information Systems, Inc.

Model: DRTXM3 and GPS-1

FCC ID: 02Q-DRTXM3

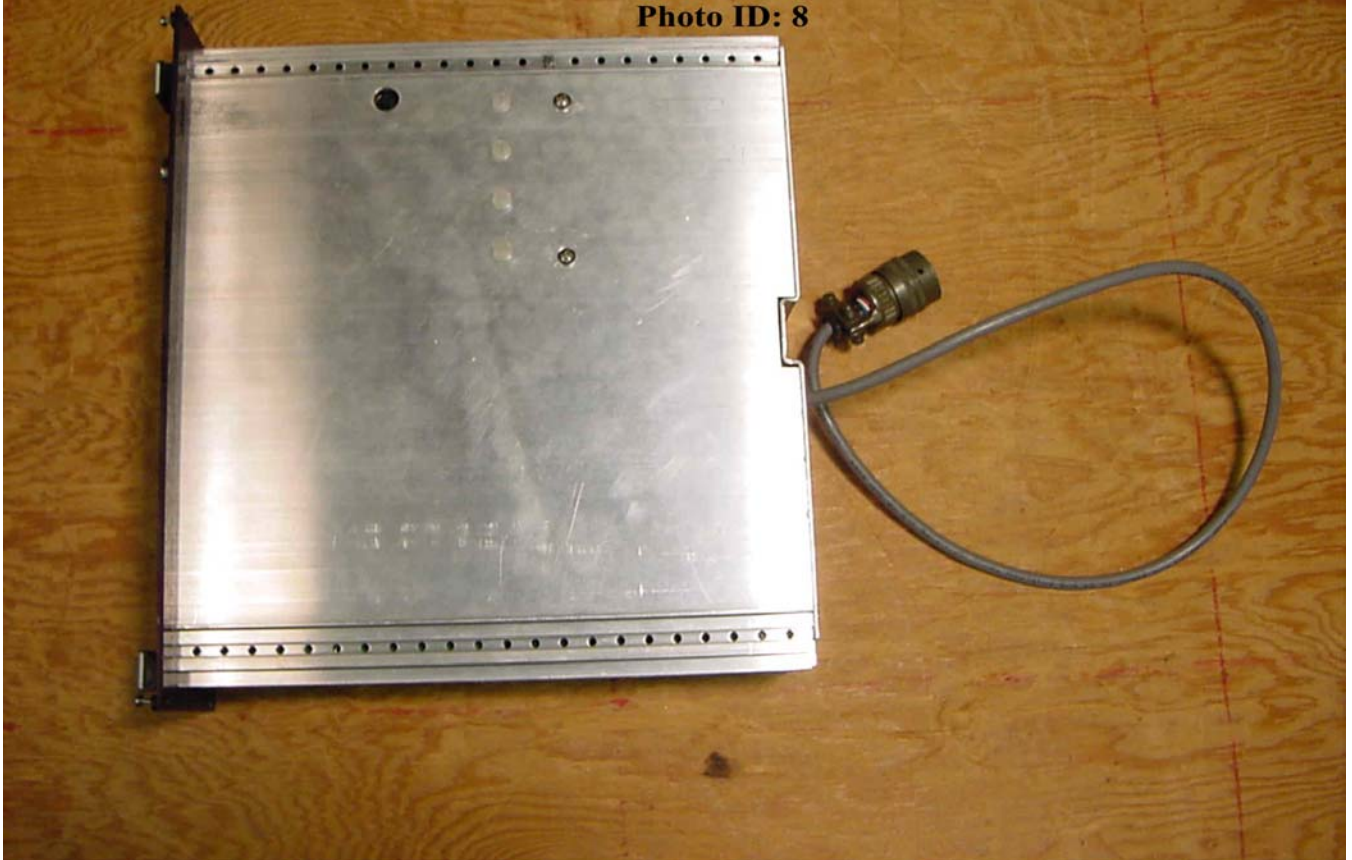
Date: 1-8-2003

Photo ID: 7



Circular Cable removed from the GPS-1

Company: Highway Information Systems, Inc.
Model: DRTXM3
FCC ID: O2Q-DRTXM3
Date: 1-8-2003
Photo ID: 8



Left Side of the DRTXM3

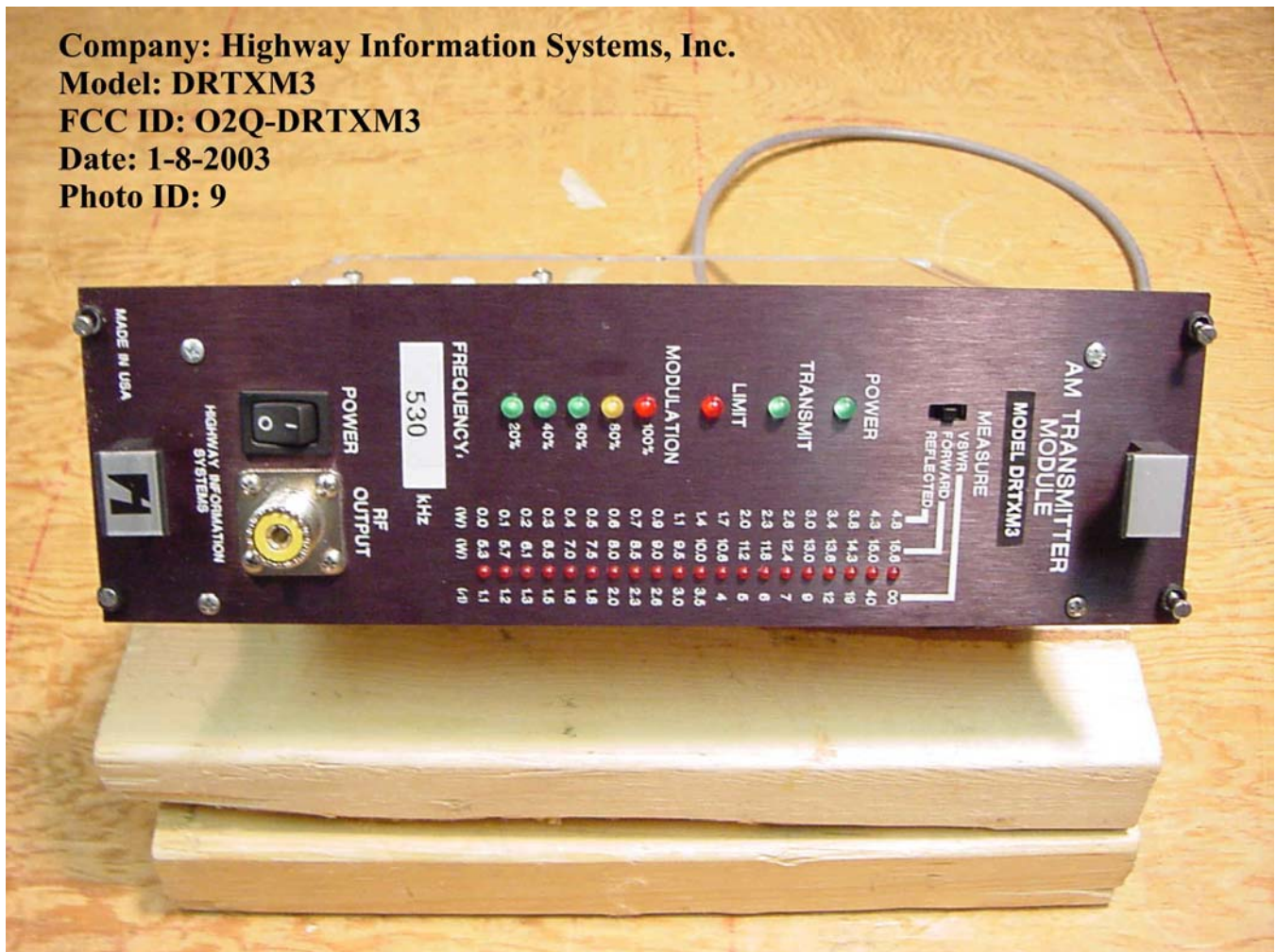
Company: Highway Information Systems, Inc.

Model: DRTXM3

FCC ID: O2Q-DRTXM3

Date: 1-8-2003

Photo ID: 9



Front Side of the DRTXM3



Company: Highway Information Systems, Inc.
Model: DRTXM3
FCC ID: O2Q-DRTXM3
Date: 1-8-2003
Photo ID: 10

Back Side of the DRTXM3