

INTERTEK TESTING SERVICES

MEASUREMENT/TECHNICAL REPORT

Artchief Industries Ltd. - MODEL: HCG1000
FCC ID: NZT-HCG1002TX

July 16, 1998

This report concerns (check one):		Original Grant <u>X</u>	Class II Change _____
Equipment Type: <u>Low Power Transmitter</u> (example: computer, printer, modem, etc.)			
Deferred grant requested per 47 CFR 0.457(d)(1)(ii)?		Yes _____	No <u>X</u>
If yes, defer until:		_____ date	
Company Name agrees to notify the Commission by:		_____ date	
of the intended date of announcement of the product so that the grant can be issued on that date.			
Transition Rules Request per 15.37?		Yes _____	No <u>X</u>
If no, assumed Part 15, Subpart C for intentional radiator - the new 47 CFR [10-1-96 Edition] provision.			
Report prepared by:	C. K. Lam Intertek Testing Services 2/F., Garment Center, 576, Castle Peak Road, HONG KONG Phone: 852-2746-8211 Fax: 852-2785-5487		

INTERTEK TESTING SERVICES

Table of Contents

1.0 General Description	2
1.1 Product Description	2
1.2 Related Submittal(s) Grants	2
1.3 Test Methodology	3
1.4 Test Facility	3
2.0 System Test Configuration	5
2.1 Justification	5
2.2 EUT Exercising Software	5
2.3 Special Accessories	5
2.4 Equipment Modification	6
2.5 Support Equipment List and Description	6
3.0 Emission Results	8
3.1 Field Strength Calculation	9
3.1 Field Strength Calculation (cont)	10
3.2 Radiated Emission Configuration Photograph	11
3.3 Radiated Emission Data	13
3.4 Line Conducted Configuration Photograph (cont)	15
3.5 Line Conducted Emission Data	20
4.0 Equipment Photographs	22
5.0 Product Labelling	24
5.1 Label Artwork	25
5.2 Label Location	26
6.0 Technical Specifications	28
6.1 Block Diagram	29
6.2 Schematic Diagram	30
7.0 Instruction Manual	32
8.0 Miscellaneous Information	34
8.1 Measured Bandwidth	35
8.2 Discussion of Pulse Desensitization	35
8.3 Calculation of Average Factor	37
8.4 Emissions Test Procedures	38
8.4 Emissions Test Procedures (cont'd)	39

INTERTEK TESTING SERVICES

List of Figures

Figure 5.1 Label Artwork 25

Figure 5.2 Label Location 26

Figure 6.1 Block Diagram 29

Figure 6.2 Schematic Diagram 30

Figure 8.1 Bandwidth 35

INTERTEK TESTING SERVICES

1.3 Test Methodology

Both AC mains line-conducted and radiated emission measurements were performed according to the procedures in ANSI C63.4 (1992). All measurements were performed in Open Area Test Sites. Preliminary scans were performed in the Open Area Test Sites only to determine worst case modes. For each scan, the procedure for maximizing emissions in Appendices D and E were followed. All Radiated tests were performed at an antenna to EUT distance of 3 meters, unless stated otherwise in the "**Justification Section**" of this Application.

1.4 Test Facility

The open area test site and conducted measurement facility used to collect the emission data is located at Garment Centre, 576 Castle Peak Road, Kowloon, Hong Kong. This test facility and site measurement data have been fully placed on file with the FCC.

INTERTEK TESTING SERVICES

EXHIBIT 2

SYSTEM TEST CONFIGURATION

INTERTEK TESTING SERVICES

2.0 System Test Configuration

2.1 Justification

The system was configured for testing in a typical fashion (as a customer would normally use it), and in the confines as outlined in ANSI C63.4 (1992.)

The EUT was powered from an AC/DC adaptor.

For maximizing emissions, the EUT was rotated through 360°, the antenna height was varied from 1 meter to 4 meters above the ground plane, and the antenna polarization was changed. This step by step procedure for maximizing emissions led to the data reported in Exhibit 3.0.

The unit was operated standalone and placed in the center of the turntable.

The equipment under test (EUT) was configured for testing in a typical fashion (as a customer would normally use it). The EUT was mounted to a cardboard box, which enabled the engineer to maximize emissions through its placement in the three orthogonal axes.

The worst case bit sequence was applied during test.

For simplicity of testing, the unit was wired to transmit continuously.

2.2 EUT Exercising Software

There was no special software to exercise the device. Once the audio signal is fed, it transmits the signal. For simplicity of testing, the unit was wired to transmit continuously.

2.3 Special Accessories

During the test, a cassette player was used as an audio input.

INTERTEK TESTING SERVICES

2.4 Equipment Modification

Any modifications installed previous to testing by Artchief Industries Ltd. will be incorporated in each production model sold/leased in the United States.

No modifications were installed by Intertek Testing Services.


2.5 Support Equipment List and Description

This product was tested in a standalone configuration.

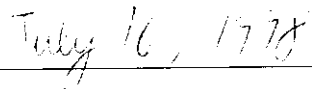
All the items listed under section 2.0 of this report are

Confirmed by:

C. K. Lam
Assistant Manager
Intertek Testing Services
Agent for Artchief Industries Ltd.



Signature



Date

INTERTEK TESTING SERVICES

EXHIBIT 3

EMISSION RESULTS

INTERTEK TESTING SERVICES

3.0 Emission Results

Data is included worst case configuration (the configuration which resulted in the highest emission levels). A sample calculation, configuration photographs and data tables of the emissions are included.

INTERTEK TESTING SERVICES

3.1 Field Strength Calculation

The field strength is calculated by adding the reading on the Spectrum Analyzer to the factors associated with preamplifiers (if any), antennas, cables, pulse desensitization and average factors (when specified limit is in average and measurements are made with peak detectors). A sample calculation is included below.

$$FS = RA + AF + CF - AG + PD + AV$$

where FS = Field Strength in dB μ V/m

RA = Receiver Amplitude (including preamplifier) in dB μ V

CF = Cable Attenuation Factor in dB

AF = Antenna Factor in dB

AG = Amplifier Gain in dB

PD = Pulse Desensitization in dB

AV = Average Factor in -dB

In the radiated emission table which follows, the reading shown on the data table may reflect the preamplifier gain. An example of the calculations, where the reading does not reflect the preamplifier gain, follows:

$$FS = RA + AF + CF - AG + PD + AV$$

INTERTEK TESTING SERVICES

3.1 Field Strength Calculation (cont)

Example

Assume a receiver reading of 62.0 dB μ V is obtained. The antenna factor of 7.4 dB and cable factor of 1.6 dB is added. The amplifier gain of 29 dB is subtracted. The pulse desensitization factor of the spectrum analyzer was 0 dB, and the resultant average factor was -10 dB. The net field strength for comparison to the appropriate emission limit is 32 dB μ V/m. This value in dB μ V/m was converted to its corresponding level in μ V/m.

$$RA = 62.0 \text{ dB}\mu\text{V}$$

$$AF = 7.4 \text{ dB}$$

$$CF = 1.6 \text{ dB}$$

$$AG = 29.0 \text{ dB}$$

$$PD = 0 \text{ dB}$$

$$AV = -10 \text{ dB}$$

$$FS = 62 + 7.4 + 1.6 - 29 + 0 + (-10) = 32 \text{ dB}\mu\text{V/m}$$

$$\text{Level in mV/m} = \text{Common Antilogarithm} [(32 \text{ dB}\mu\text{V/m})/20] = 39.8 \mu\text{V/m}$$

INTERTEK TESTING SERVICES

3.3 Radiated Emission Data

The data on the following page lists the significant emission frequencies, the limit and the margin of compliance. Numbers with a minus sign are below the limit.

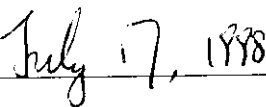
Judgement: Passed by 6.2 dB

TEST PERSONNEL:



Signature

Kenneth H. M. Lam, Compliance Engineer
Typed/Printed Name



Date

INTERTEK TESTING SERVICES

Company: Archief Industries Ltd.
Model: HCG1000

Date of Test: July 1, 1998

Table 1

Radiated Emissions

Polarity	Frequency (MHz)	Reading (dB μ V)	Antenna Factor (dB)	Pre-Amp Gain (dB)	Net at 3m (dB μ V/m)	Limit at 3m (dB μ V/m)	Margin (dB)
V	49.890	78.8	11	16	73.8	80.0	-6.2
V	99.780	33.2	11	16	28.2	43.5	-15.3
V	149.669	28.3	13	16	25.3	43.5	-18.2
V	199.559	22.7	16	16	22.7	43.5	-20.8
V	*249.449	18.8	20	16	22.8	46.0	-23.2
V	299.338	15.3	22	16	21.3	46.0	-24.7

- Notes:
1. Peak Detector Data unless otherwise stated.
 2. All measurements were made at 3 meter. Harmonic emissions not detected at the 3-meter distance were measured at 0.3-meter and an inverse proportional extrapolation was performed to compare the signal level to the 3-meter limit. No other harmonic emissions than those reported were detected at a test distance of 0.3-meter.
 3. Negative value in the margin column shows emission below limit.
 4. Horn antenna and average detector are used for the emission over 1000MHz.
- *Emission within the restricted band meets the requirement of part 15.205. The corresponding limit as per 15.209 is based on Quasi peak detector data for frequencies below 1000 MHz and average detector data for frequencies over 1000 MHz.

Test Engineer: Kenneth H. M. Lam

INTERTEK TESTING SERVICES

Company: Archief Industries Ltd.
Model: HCG1000

Date of Test: July 1, 1998

Graph 1

Conducted Emissions
Section 15.107 Requirements

Tested by: [Name] Date: [Date]
Reviewed by: [Name] Date: [Date]

Tested by: [Name] Date: [Date]
Reviewed by: [Name] Date: [Date]

Tested by: [Name] Date: [Date]
Reviewed by: [Name] Date: [Date]

Max. [Value] [Unit] [Label]

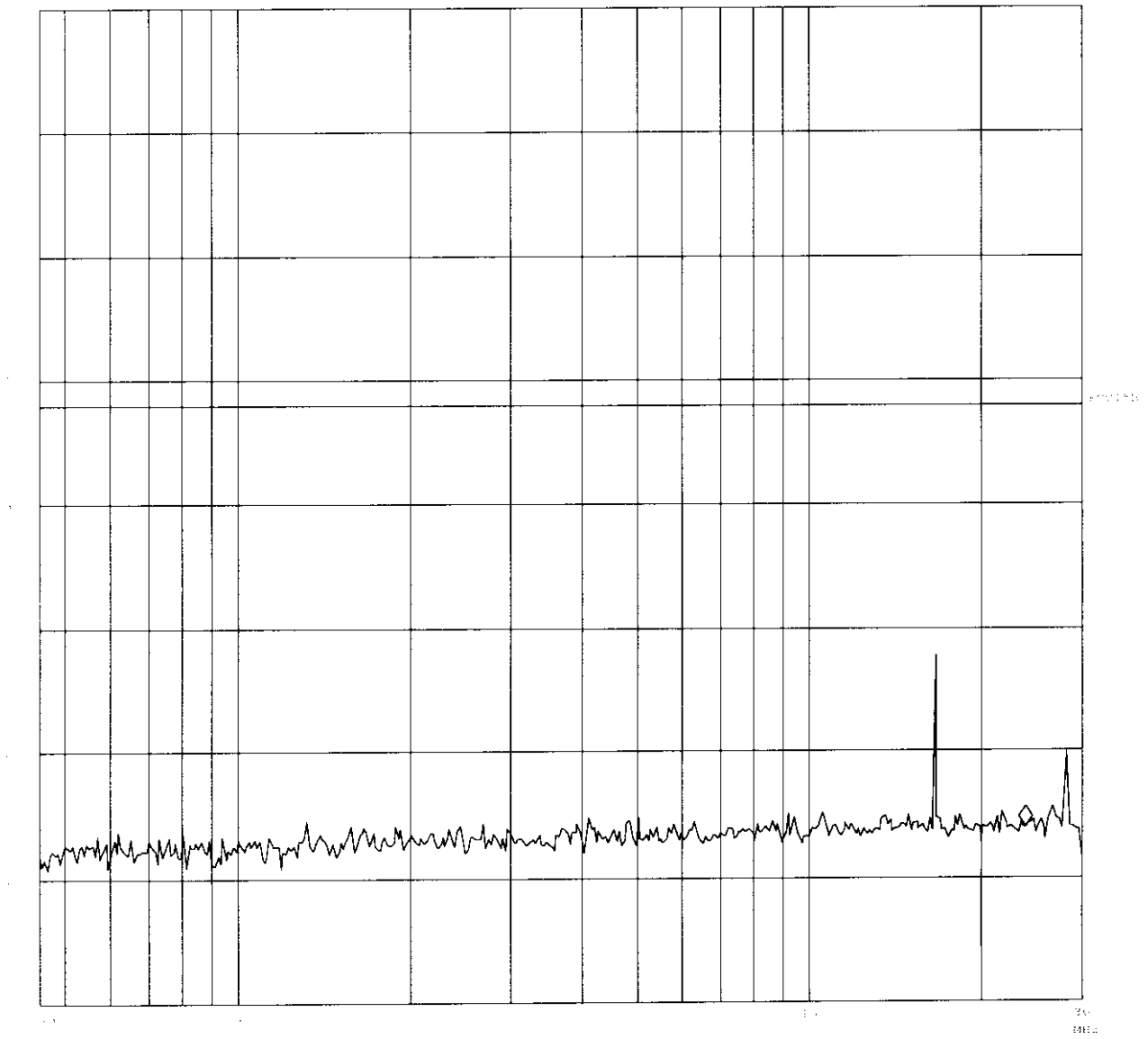


Figure 1

Ctrl. No.: N/A

INTERTEK TESTING SERVICES

Company: Artchief Industries Ltd.
Model: HCG1000

Date of Test: July 1, 1998

Table 2

Conducted Emissions Section 15.107 Requirements

Report No.: 9805013

Tested By:Hong, Report No.:9805013

Scan Settings: 1 Range,

```
----- Frequencies -----|----- Receiver Settings -----|
Start      Stop      Step      IF BW  Detector  M-Time  Atten  Preamp  OpRge
150k       30M       5k        10k    PK        20ms   AUTO  LN OFF  60dB
```

Final Measurement Results:

no Results

Ctrl. No.: N/A

INTERTEK TESTING SERVICES


3.5 Line Conducted Emission Configuration Data

The data on the following page lists the significant emission frequencies, the limit, and the margin of compliance. Numbers with a minus sign are below the limit.

Judgement: Passed

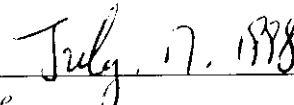
* All readings are peak unless stated otherwise.

TEST PERSONNEL:



Signature

Kenneth H. M. Lam, Compliance Engineer
Typed/Printed Name



Date

INTERTEK TESTING SERVICES

EXHIBIT 4

EQUIPMENT PHOTOGRAPHS

INTERTEK TESTING SERVICES

4.0 Equipment Photographs

Photographs of the tested EUT are attached.

INTERTEK TESTING SERVICES

EXHIBIT 8

MISCELLANEOUS INFORMATION

INTERTEK TESTING SERVICES

8.0 Miscellaneous Information

This miscellaneous information includes details of the measured bandwidth, the test procedure and calculation of factors such as pulse desensitization and averaging factor.

INTERTEK TESTING SERVICES

8.1 Measured Bandwidth

The plot on the following page shows the fundamental emission when modulated. From the plot, the emission in the ± 10 kHz bandedges is observed to be more than 60 dB down from the peak. The minimum requirement is 26 dB. The unit meets the FCC bandwidth requirements.

Figure 8.1 Bandwidth

MKR 22.0 KHZ
-62.11 dB

-62.11 dB

GOV

BB/

VA SB
SC FC
CORR

```
START 49.81000 MHz
#RES BW 3.0 KHZ
#VBW 3 MHz
STOP 49.91000 MHz
SWP 100 msec
```


INTERTEK TESTING SERVICES

8.2 Discussion of Pulse Desensitization

The determination of pulse desensitivity was made in accordance with Hewlett Packard Application Note 150-2, *Spectrum Analysis ... Pulsed RF*.

Pulse desensitivity is not applicable for this device. Since the transmission signal is a continuous signal.

INTERTEK TESTING SERVICES

8.3 Calculation of Average Factor

Averaging factor is not applicable for this device. Since the transmission signal is a continuous signal.

INTERTEK TESTING SERVICES

8.4 Emissions Test Procedures

The following is a description of the test procedure used by Intertek Testing Services in the measurements of transmitters operating under Part 15, Subpart C rules.

The test set-up and procedures described below are designed to meet the requirements of ANSI C63.4 - 1992.

The transmitting equipment under test (EUT) is attached to a cardboard box and placed on a wooden turntable which is four feet in diameter and approximately one meter in height above the ground plane. During the radiated emissions test, the turntable is rotated and any cables leaving the EUT are manipulated to find the configuration resulting in maximum emissions. The cardboard box is adjusted through all three orthogonal axes to obtain maximum emission levels. The antenna height and polarization are varied during the testing to search for maximum signal levels.

Detector function for radiated emissions is in peak mode. Average readings, when required, are taken by measuring the duty cycle of the equipment under test and subtracting the corresponding amount in dB from the measured peak readings. A detailed description for the calculation of the average factor can be found in Exhibit 8.3.

The frequency range scanned is from the lowest radio frequency signal generated in the device which is greater than 9 kHz to the tenth harmonic of the highest fundamental frequency or 40 GHz, whichever is lower. For line conducted emissions, the range scanned is 450 kHz to 30 MHz.

INTERTEK TESTING SERVICES

8.4 Emissions Test Procedures (cont'd)

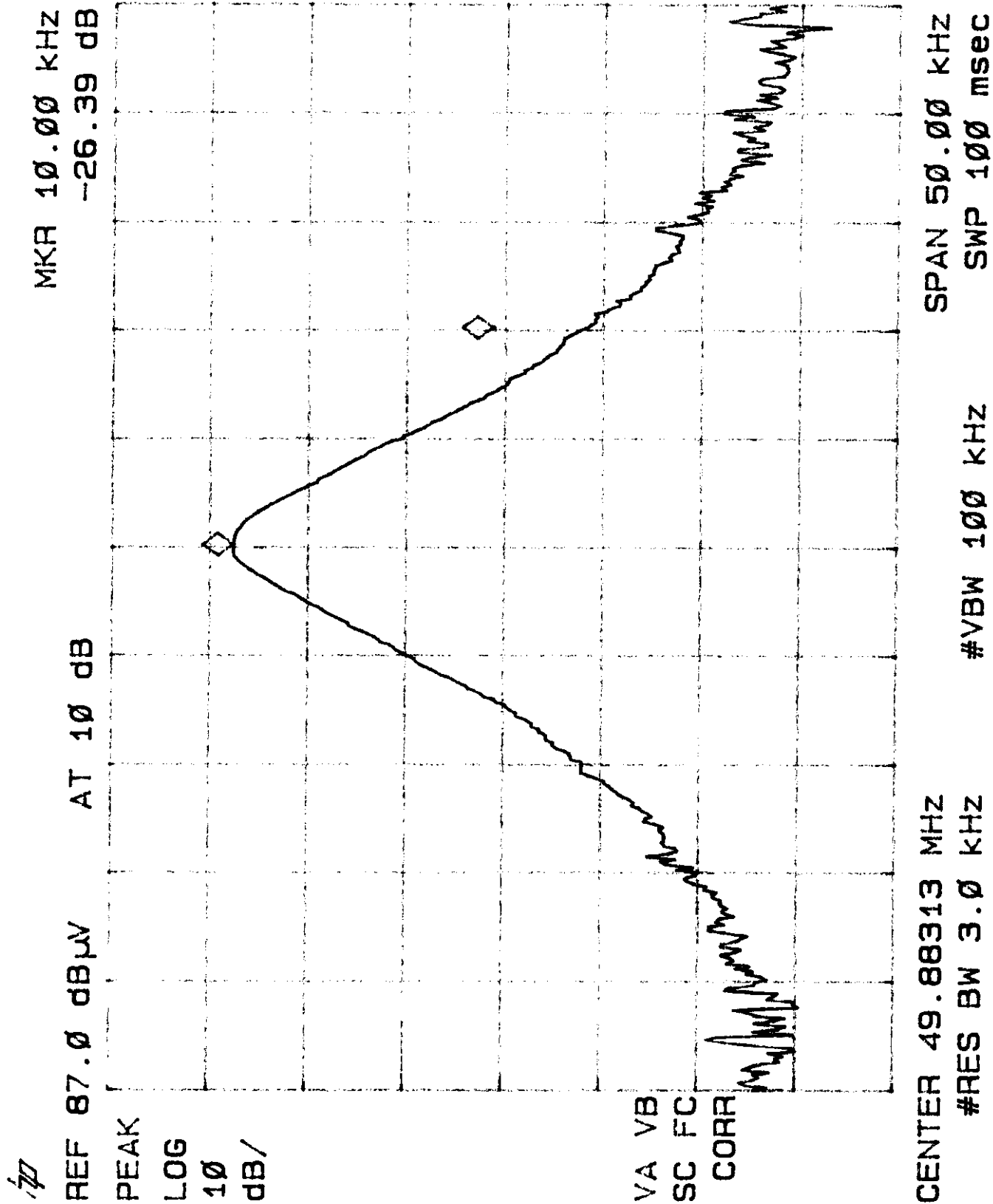
The EUT is warmed up for 15 minutes prior to the test.

AC power to the unit is varied from 85% to 115% nominal and variation in the fundamental emission field strength is recorded. If battery powered, a new, fully charged battery is used.

Conducted measurements are made as described in ANSI C63.4 - 1992.

The IF bandwidth used for measurement of radiated signal strength was 100 kHz or greater below 1000 MHz. Where pulsed transmissions of short enough pulse duration warrant, a greater bandwidth is selected according to the recommendations of Hewlett Packard Application Note 150-2. A discussion of whether pulse desensitivity is applicable to this unit is included in this report (See Exhibit 8.2). Above 1000 MHz, a resolution bandwidth of 1 MHz is used.

Transmitter measurements are normally conducted at a measurement distance of three meters. However, to assure low enough noise floor in the forbidden bands and above 1 GHz, signals are acquired at a distance of one meter or less. All measurements are extrapolated to three meters using inverse scaling, but those measurements taken at a closer distance are so marked.



C. K. LI

INTERTEK TESTING

650

415-463-2910

MR. LI:

1 11-25-98 12:30 P.M.

From RICH FABINA

FCC LAB

Re: [redacted]

301-344-2050 301-362-3027

[redacted] [redacted]

THE RESPONSE TO THE ATTACHED REQUEST FOR ADDITIONAL INFORMATION WAS DUE ON NOVEMBER 16, 1998. IF I DON'T GET A REPLY TO THIS FAX BY DECEMBER 4, 1998, I WILL DISMISS THIS APPLICATION. CALL IF YOU HAVE QUESTIONS. Rich Fabina

P. 1

* * * TRANSMISSION RESULT REPORT (NOV.25.1998 2:51PM) * * *

TTI CONG MAIL/OLIA FCC

DATE	TIME	ADDRESS	MODE	TIME	PAGE	RESULT	PERS. NAME	FILE
NOV.25.	2:51PM	415 873 7357	TES	0'36"	P. 1	OK		447

: BATCH
M : MEMORY
S : STANDARD

C : CONFIDENTIAL
L : SEND LATER
D : DETAIL

\$: TRANSFER
@ : FORWARDING
F : FINE

P : POLLING
E : ECM
> : REDUCTION