

Programming the HomeLink® buttons

- & **DANGER** Danger to life from toxic exhaust gas in enclosed spaces

Combustion engines emit toxic exhaust gases such as carbon monoxide. Inhaling these exhaust gases is hazardous to health and leads to poisoning.

Never leave the engine or, if present, the stationary heater running in an enclosed space without sufficient ventilation.

- & **WARNING** Risk of injury by becoming trapped when opening and closing a garage door

When you operate or program a garage door with an integrated garage door opener, persons can become trapped or struck by the garage door if they stand within its range of movement.

Always make sure that nobody is within the range of the garage door's movement.

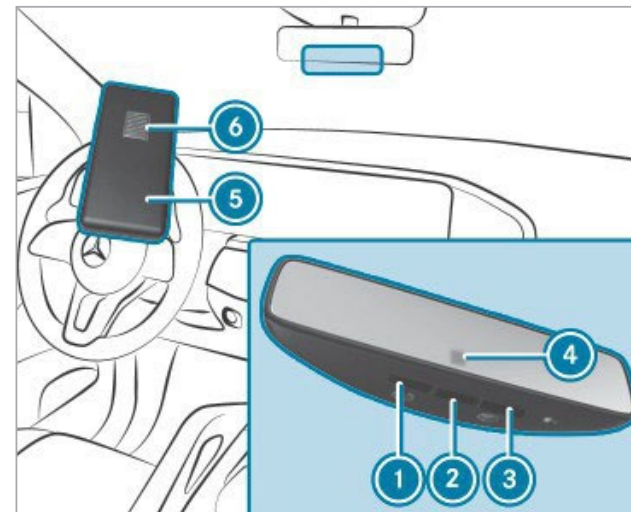
Only operate the following doors using the garage door opener:

- R Doors with a safety stop and reversing feature
- R Doors that comply with the applicable safety standards

Before programming the garage door opener, park the vehicle outside the garage. Ensure that the vehicle is switched on but not started.

Requirements:

- R The vehicle has been parked outside the garage or outside the range of movement of the door.
- R The vehicle is switched on.
- R The vehicle has not been started.
- R The original remote control for the garage door is used.
- % The garage door opener function is always available when the vehicle is switched on.



- # Programming procedure: press the button to be programmed (1 , 2 or 3) and then release it.
If the selected button is not programmed, the indicator lamp 4 flashes orange slowly.

% To reprogram a button that has already been programmed, press the corresponding button until the indicator lamp 4 starts to flash orange slowly. This may take up to 20 seconds.

Point the remote control 5 from a distance of between 5 cm and 30 cm underneath the mirror towards button 1, 2 or 3.

Press and hold the button 6 on the remote control 5 until one of the following signals appears:

- R The indicator lamp 4 lights up green continuously. Programming is complete.
- R The indicator lamp 4 flashes green. Programming was successful.

The selected HomeLink® button is now programmed.

Test the programming: press and hold the HomeLink® button for two seconds.

Release the HomeLink® button and, after three seconds, press and hold it again for two seconds.

Repeat this process once more (three times in total).

% If you have a garage door system with fixed code or QuickTrain technology, pressing the programmed HomeLink® button opens or closes the garage door.
If the garage door is not working and the indicator lamp 4 is flashing quickly, you must perform rolling code synchronisation (/ page 3).

Performing rolling code synchronisation (if required)

If the garage door is not working and the indicator lamp in the inside mirror is flashing quickly, your garage door system operates with rolling code. In this case, you must perform rolling code synchronisation.

Information on rolling code synchronisation: In the following steps, you must press the "Learn" "Program" or "Smart" button on the garage door opener in your garage. Please note that the names of the buttons may vary depending on the

manufacturer. For more information, refer to the owner's manual for the garage door opener.

- R Have someone help you so that the steps can be carried out faster and more easily.
- R You may need a ladder or something of similar stability to help you reach the buttons. Do not stand on your vehicle to carry out these steps!
- R Certain timings must be observed for the following steps. It may be necessary to try carrying out the steps several times.

Find the "Learn", "Program" or "Smart" button on the garage door opener in the garage. The shape and colour of the buttons vary depending on the manufacturer.

Press the "Learn", "Program" or "Smart" button.

Depending on the manufacturer of the garage door opener, an indicator lamp may start to flash.

Within 30 seconds, press and hold the HomeLink® button in the vehicle for three seconds.

Press the HomeLink® button again and hold it for three seconds.

4 Garage door opener (HomeLink®)

- # Repeat this process once more (three times in total). Rolling code synchronisation is now complete. HomeLink® should now activate your garage door equipped with a rolling code.
- % Please note that some garage door openers may require the HomeLink® button to be pressed for different lengths of time during the synchronisation process. Observe the owner's manual for the garage door manufacturer. More information can be found on the <https://www.homelink.com>

Resolving problems when programming HomeLink®

- # Ensure that the remote control used for programming is approved by the manufacturer of the garage door opener and activates the door.
- # Replace the batteries in the remote control 5 .

- # Hold the remote control 5 at various angles in front of the inside mirror from a distance of between 5 cm and 30 cm. Hold each position for at least 25 seconds before trying another position.
- # Hold the remote control 5 at the same angles at various distances in front of the inside mirror. You should test every position for at least 25 seconds before trying another position.
- # On remote controls that only transmit for a limited period, press the button 6 on the remote control 5 again before transmission ends.
- % Support and additional programming information:
 - R United States (U.S.): call the free HomeLink® hotline on 1-800-355-3515
 - R Visit the <https://www.homelink.com>

Deleting the HomeLink® buttons

- # Press and hold buttons 1 and 3 .
The indicator lamp 4 lights up orange.
- # If the indicator lamp 4 flashes green, release buttons 1 and 3 .
This may take up to 10 seconds.
The entire memory has been deleted.

Special programming modes (if required)

D-mode: A special programming mode is required for some devices available on the market. Only use this if this is expressly stated in the programming instructions in the owner's manual for the device or on the <https://www.homelink.com>.

Country-specific information for regulatory radio components

Information regarding modifications to radio components

Modifications to radio components may invalidate the general operating permit for the radio component in question. The radio component manufacturer shall accept no responsibility for such modifications.

Information regarding crossing national borders
You must observe the radio regulatory provisions for the country in which you are currently driving when operating the vehicle.

Wireless vehicle components



USA: "Radio based devices of this vehicle comply with Part 15 of the FCC Rules. Operation is subject to the following two conditions: 1) These devices may not cause harmful interference, and

2) These devices must accept any interference received, including interference that may cause undesired operation. Changes or modifications not expressly approved by the party responsible for compliance could void the user's authority to operate the equipment."

This equipment complies with FCC and ISDE radiation exposure limits set forth for an uncontrolled environment. End Users must follow the specific operating instructions for satisfying RF exposure compliance. This transmitter must be at least 20 cm from the user and must not be co-located or operating in conjunction with any other antenna or transmitter.

Canada: "This vehicle contains licence-exempt transmitter(s)/receiver(s) that comply with Innovation, Science and Economic Development Canada's licence-exempt RSS(s). Operation is subject to the following two conditions: (1) These devices may not cause interference. (2) These devices must accept any interference, including interference that may cause undesired operation of the devices." "Les émetteurs/récepteurs dans cette véhicule sont conforme aux CNR d'Innovation, Sciences et Développement économique Canada applicables aux appareils radio exempts de licence. L'exploitation est autorisée aux deux conditions suivantes : 1) Ces appareils ne doivent pas produire de brouillage; 2) Ces appareils doivent accepter tout brouillage radioélectrique subi, même si le brouillage est susceptible d'en compromettre le fonctionnement."

Cet appareil est conforme aux limites d'exposition aux radiations de la FCC et d'ISDE établies pour un environnement non contrôlé. Les utilisateurs finaux doivent respecter les instructions d'utilisation spécifiques pour satisfaire aux exigences de conformité aux expositions de RF. L'émetteur doit se trouver à 20 cm au minimum de l'utilisateur et ne doit pas être situé au même endroit que tout autre émetteur ou antenne ni fonctionner avec un autre émetteur ou antenne.

Country-specific information for regulatory radio components

Information regarding modifications to radio components
Modifications to radio components may invalidate the general operating permit for the radio component in question. The radio component manufacturer shall accept no responsibility for such modifications.

Information regarding crossing national borders
You must observe the radio regulatory provisions for the country in which you are currently driving when operating the vehicle.

Wireless vehicle components
For Mexico only:



The following information applies to all wireless components of the vehicle and of the information systems and communication devices integrated in the vehicle:
Operation of this device is subject to the following two conditions: (1) this device must not cause harmful interference, and (2) this device must accept any interference received, including interference that may cause undesired operation.