

INTERNAL PHOTOGRAPHS

This document contains 11 photographs

Photograph No.1
“FibeAir IP-20V” internal view

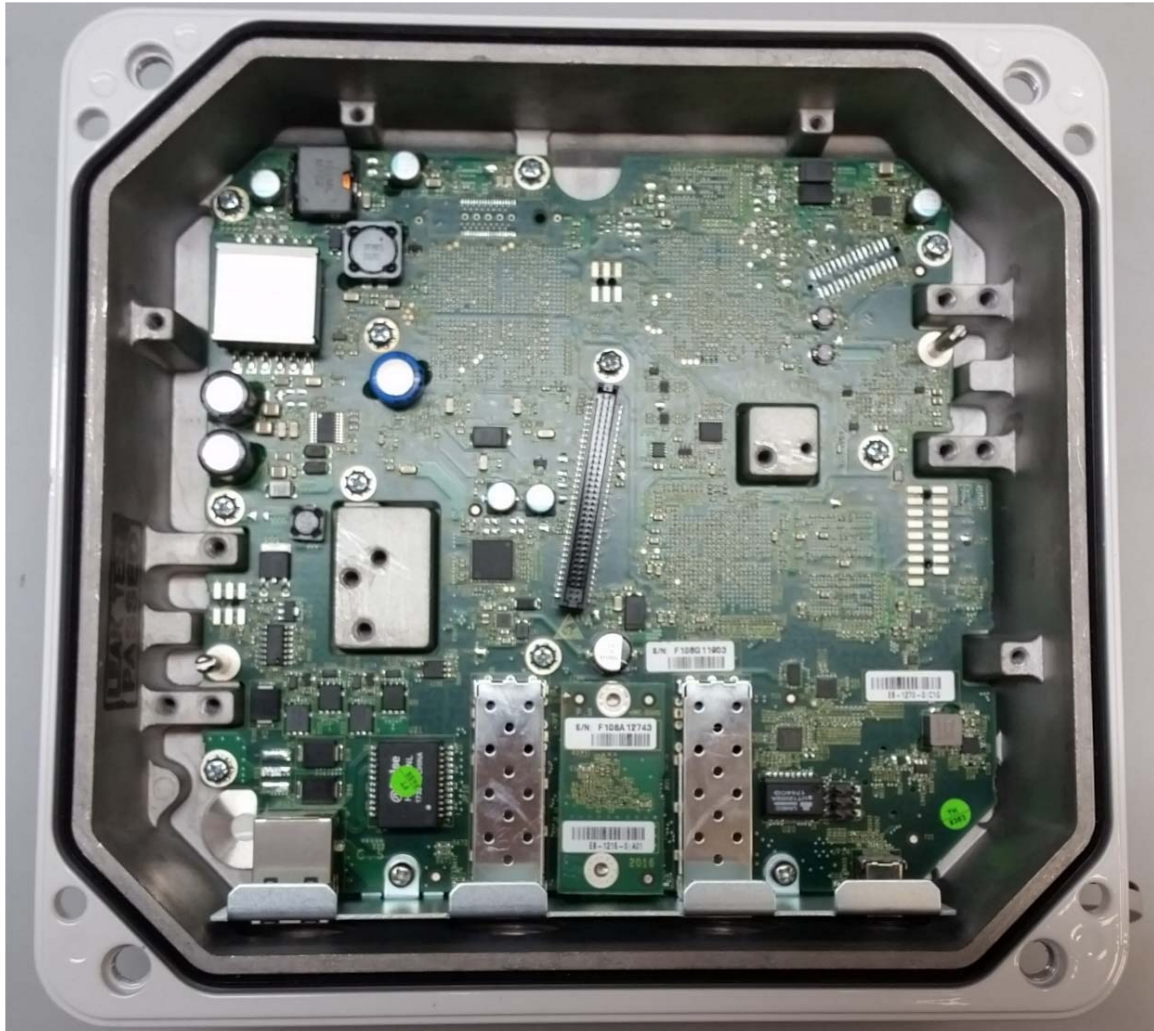


Antenna

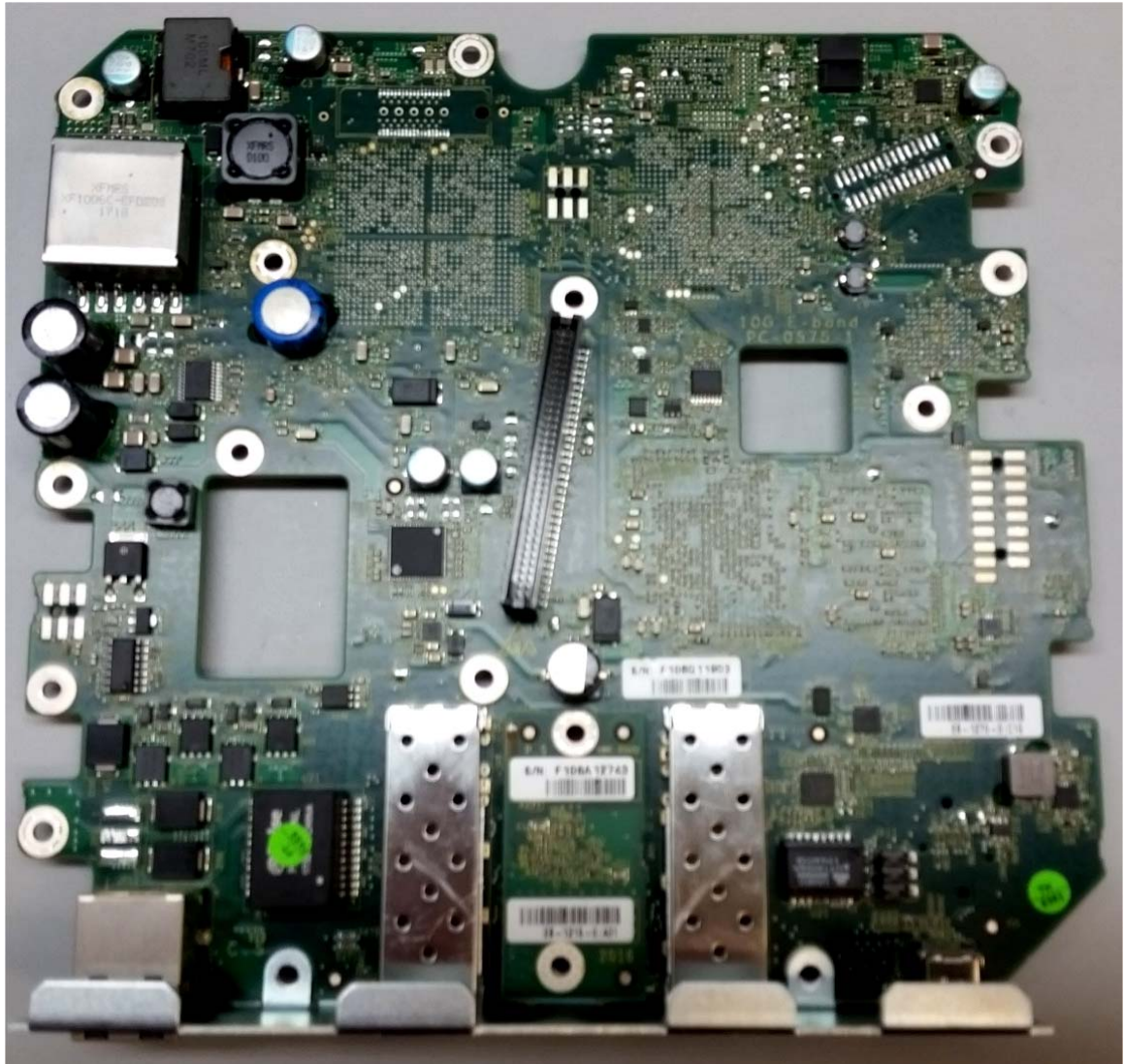
Photograph No.2
“FibeAir IP-20V” internal view



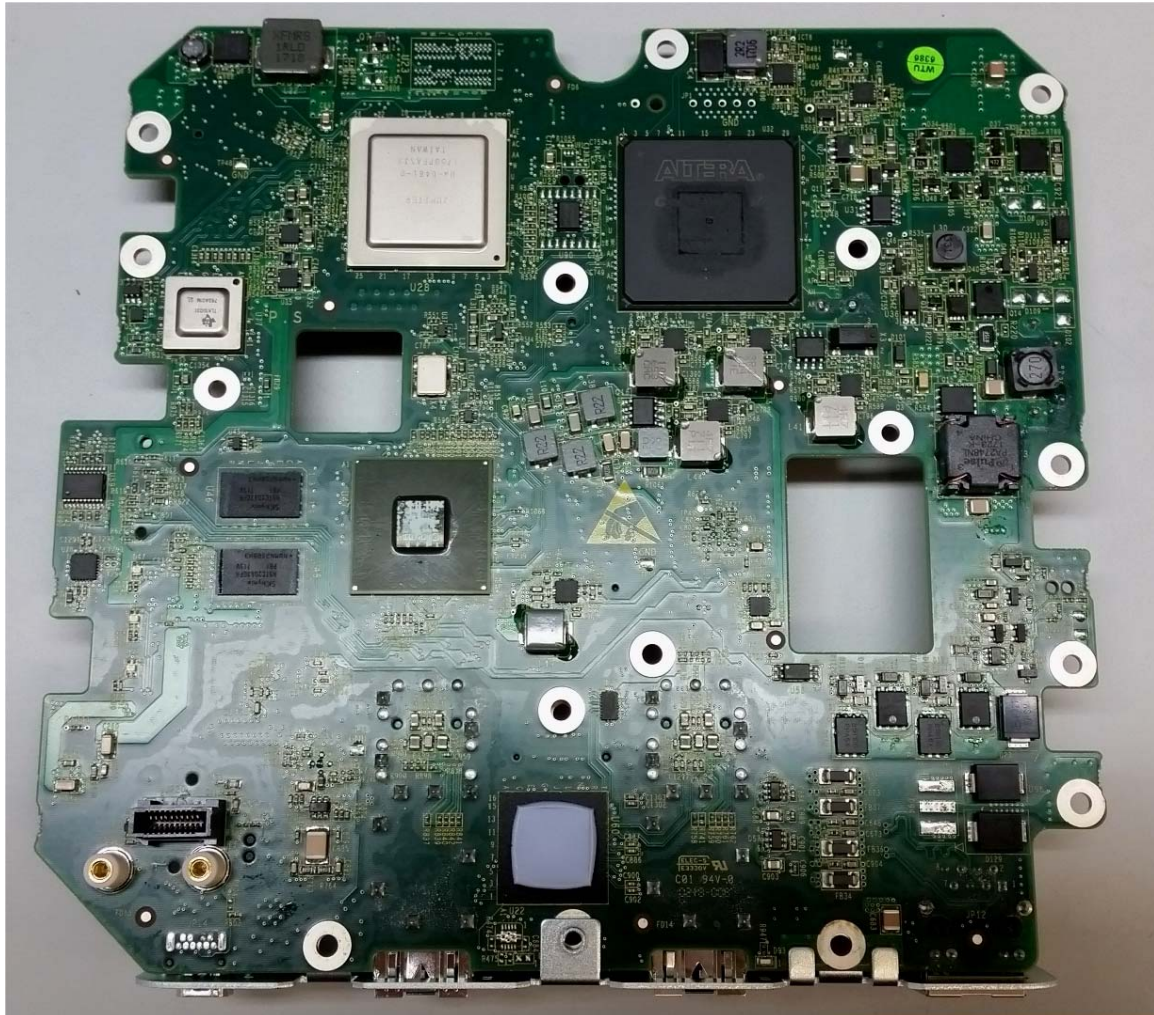
Photograph No.3
“FibeAir IP-20V” internal view without Tx/Rx module



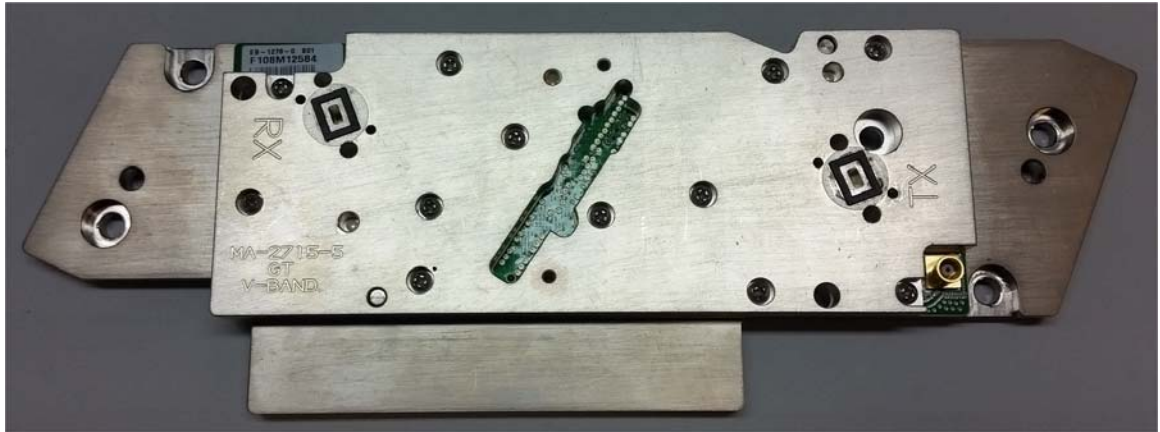
Photograph No.4
“FibeAir IP-20V” main board front view



Photograph No.5
“FibeAir IP-20V” main board bottom view



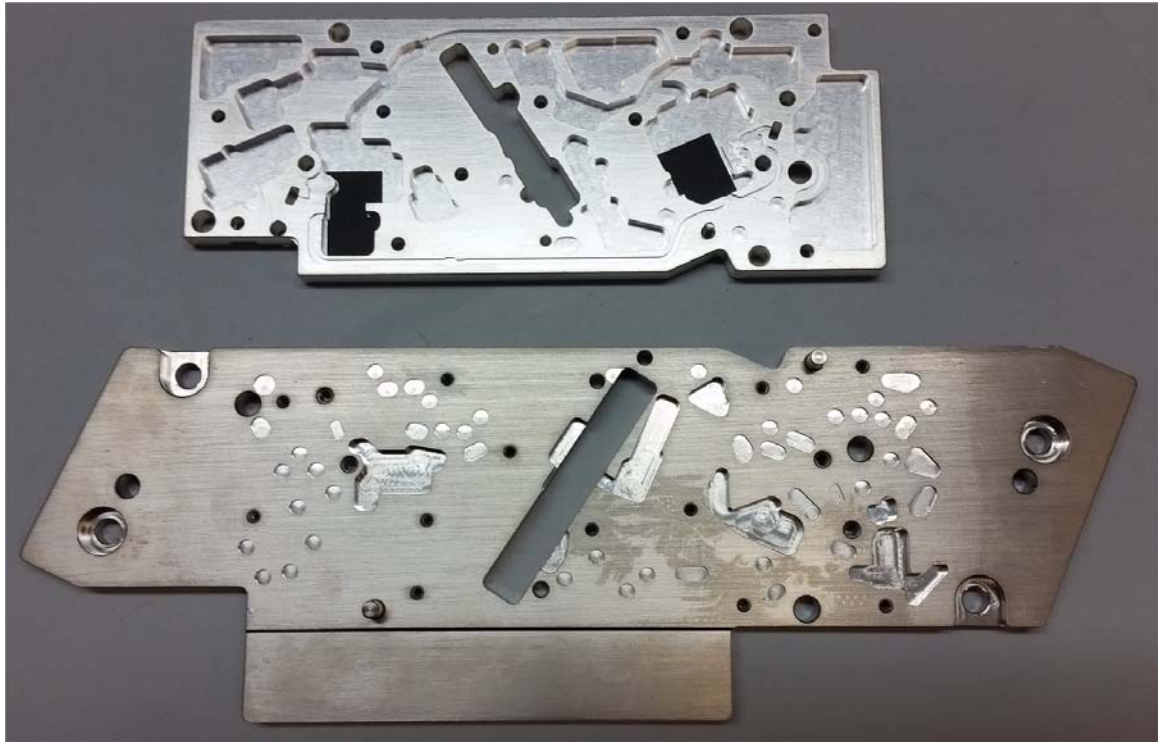
Photograph No.6
Front side of the Tx/Rx module



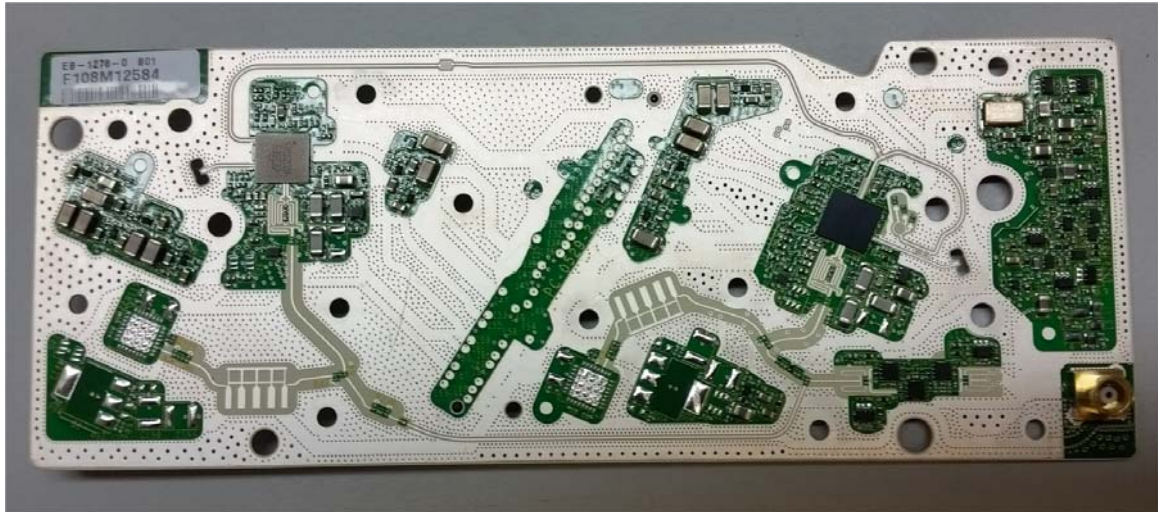
Photograph No.7
Second side of the Tx/Rx module



Photograph No.8
RF module shielding compartments



Photograph No.9
RF module PCB, front view



Photograph No.10
RF module PCB, second side view



Photograph No.11
“FibeAir IP-20V” internal view with main board removed

