
T-PAK Thin-Client PC User's Guide

Copyright Statement

Copyright © 2000 by the registered company. All rights reserved. No part of this publication may be reproduced, transmitted, transcribed, stored in a retrieval system or translated into any language or computer language, in any form or by any means, electronic, mechanical, magnetic, optical, chemical, manual or otherwise, without the prior written permission of this company.

Record of the model number, serial number, purchase date, and the purchasing place will be provided correspondingly. The serial number and model number are recorded on the label affixed to your computer. All correspondence concerning your unit should include the serial number, model number, and purchase information.

T-PAK Thin-Client PC is a registered trademark of this company. All other brand names, trademarks, and registered trademarks are properties of their respective companies.

Notices

Changes may be made periodically to the information in this publication without obligation to notify any person of such revision or changes. Such changes will be incorporated in new editions of this manual or supplementary documents and publications. This company makes no representations or warranty, either expressed or implied, with respect to the contents hereof, and specifically disclaims the implied warranties of merchantability or fitness for a particular purpose.

FCC Notice

This device has been tested and found to comply with the limits for a Class B digital device, pursuant to Part 15 of the FCC Rules. These limits are designed to provide reasonable protection against harmful interference in a residential installation. This device generates, uses, and can radiate radio frequency energy, and, if not installed and used in accordance with the instructions, may cause harmful interference to radio communications. However, there is no guarantee that interference will not occur in a particular installation. If this device does cause harmful interference to radio or television reception, which can be determined by turning the device off and on, the user is encouraged to try to correct the interference by one or more of the following measures:

- Reorient or relocate the receiving antenna.
- Increase the separation between the device and receiver.
- Connect the equipment to an outlet on a circuit different from that on which the receiver is connected.
- Consult your dealer or an experienced radio/TV technician for help.

Warning

- All connections to other computing devices must be made using shielded cables to maintain compliance with FCC regulations.
- Only peripherals (input/output devices, terminals, printers, etc.) certified to comply with the Class B limits might be attached to this equipment. Operation with noncertified peripherals is likely to result in interference to radio and TV reception.
- Changes or modifications to this unit not expressly approved by the party responsible for compliance could void the user's authority to operate this computer.

Use Conditions

This part complies with Part 15 of the FCC Rules. Operation is subject to the following two conditions: (1) this device may not cause harmful interference, and (2) this device must accept any interference received, including interference that may cause undesired operation.

Important Safety Instructions

Read these instructions carefully. Save these instructions for future reference.

- Follow all warnings and instructions marked on this product.
- Unplug this product from the wall outlet before cleaning. Do not use liquid cleaners or aerosol cleaners. Use a damp cloth for cleaning.
- Do not use this product near water.
- Do not place this product on an unstable cart, stand, or table. This product may fall and have serious damage.
- Slots and openings in the cabinet and the back or bottom of this product are provided for ventilation. To ensure reliable operation of this product and to protect it from overheating, these openings must not be blocked or covered. The openings should never be blocked by placing the product on a bed, sofa, rug, or other similar surface. This product should never be placed near or over a radiator or heat register, or in a built-in installation unless proper ventilation is provided.
- This product should be operated from the type of power indicated on the marking label. If you are not sure of the type of power available, consult your dealer or local power company.
- Do not allow anything to rest on the power cord. Do not locate this product where people will walk on the cord.
- If an extension cord is used with this product, make sure that the total ampere rating of this device plugged into the extension cord does not exceed the extension cord ampere rating. Also,

make sure that the total rating of all products plugged into the

wall outlet does not exceed the fuse rating.

- Never push objects of any kind into this product through cabinet slots as they may touch dangerous voltage points or short out parts that could result in a fire or electric shock. Never spill liquid of any kind on the product.
- Do not attempt to service this product yourself, as opening or removing covers may expose you to dangerous voltage points or other risks. Refer all servicing to qualified service personnel.
- Unplug this product from the wall outlet and refer servicing to qualified service personnel under the following conditions:
 - a. When the power cord or plug is damaged or frayed.
 - b. If liquid has been spilled into the product.
 - c. If the product has been exposed to rain or water.
 - d. If the product does not operate normally when the operating instructions are followed. Adjust only those controls that are covered by the operating instructions since improper adjustment of other controls may result in damage and will often require extensive work by a qualified technician to restore the product to normal condition.
 - e. If the product has been dropped or the cabinet has been damaged.
 - f. If the product exhibits a distinct change in performance, indicating a need for service.
 - g. Replace the battery with the same type as the product's battery we recommend. Use of another battery may present a risk of fire or explosion. Refer battery replacement to a qualified serviceman.
- Batteries may explode if not handled properly. Do not disassemble or dispose of them if fire. Keep them away from children and dispose of used batteries promptly.
- Use only the proper type of power adaptor (provided in your accessories box) for this unit. It should be a detachable type: UL listed/CSA certified, rated input 100-240Vac, 1.5m, 50-60Hz, rated output 12Vdc, 5A, TUV/CNS (Taiwan) or CCIB (China) approved or its equivalent, Green PC compliant.

Laser Compliance Statement

The CD-ROM drive in this computer is a laser product. The CD-ROM drive's classification label (shown below) is located on the drive.

CLASS 1 LASER PRODUCT

**CAUTION: INVISIBLE LASER RADIATION WHEN OPEN.
AVOID EXPOSURE TO BEAM.**

Contents

Chapter 1 Introduction

Overview.....	1
Product Description.....	1
Package Contents	2
Required Accessories	2
Options	3

Chapter 2 System Tour

Overview.....	5
Features.....	5
Performance.....	5
Multimedia	6
Connectivity	6
External Components	6
Front and Right Panels.....	7
Back Panel- Ports	8
Base Panel	9
Disk Drives	9
CD-ROM/DVD Drive.....	9
Hard Disk Drive (required optional)	9

Chapter 3 Installing Drivers

Overview.....	11
Installing Drivers	11

Chapter 4 An Easy Guide to BIOS

Overview.....	13
BIOS (SCU)	13
Entering the BIOS Setup Screen.....	13

BIOS Setup Screen Information	14
BIOS Options Navigation.....	14
With the Mouse.....	14
With the Keyboard	14
BIOS Features	15
Startup Menu	15
Memory Menu	15
Disks menu	16
Components Menu	16
Plug/play Menu	17
Power Menu.....	17
Exit Menu	17

Chapter 1

Introduction

Overview

The T-PAK Thin-Client PC is a compact and powerful system supported by revolutionary BIOS software with many new features, including a small, thin and lightweight design, with a good upgrade ability. It is an innovative, cost- and space-saving design, which allows you more room to move in your office space. Moreover, this unit has great peripheral connectivity, with ports for peripherals such as a printer, telephone cables for Internet access, a keyboard, a mouse, and even a TV. Please read this manual carefully so as to take full advantage of the outstanding features and functionality your T-PAK Thin-Client PC has to offer.

Product Description

Your T-PAK Thin-Client PC has the following advantages:

- Modularization - easy to manufacture, service and maintain.
- Standardization - standard parts and cables.
- Flexibility - easily tailored to suit users.
- Space saving, super light (2.3 kg) and durable - takes up as much space as a large book (height: 278 mm; width: 78 mm/94.5 mm; depth: 244 mm).
- All the power of the Pentium III processor in a design made to suit people.

Package Contents

Before you unpack your computer, make sure that you have enough space to set it up.

Carefully unpack the carton and remove the contents. If any of the following items are missing or damaged, contact your dealer immediately:

- ✓ 1 T-PAK Thin-Client PC (Main Unit)
- ✓ 1 AC-DC Power Adaptor
- ✓ 1 User's Guide
- ✓ Utilities Disk
- ✓ Other User Documentation and Third-party Software



Required Accessories

To be able to operate your computer properly, you also need to connect the following devices to the main unit:

- A Standard PS/2 Keyboard
- A PS/2, a USB Mouse or a Serial Mouse
- A Computer Monitor
- External Speakers
- Standard Internal Hard Disk Drive
- DIMM SDRAM Memory SIMM(s)

Options

Alternatively, the following devices can be chosen as your personal preferences:

- DVD-ROM CD-RW Pack
- USB Floppy Disk Drive
- LCD Monitor
- TV

If you require any of the accessories or options above to be included along with your T-PAK Thin-Client PC, please contact your local dealer for further information and service.

Chapter 2

System Tour

Overview

This chapter discusses the features and components of your computer.

Features

Here are just a few of your computer's many features:

Performance

- Supports an Intel Pentium III FC-PGA processor above 550MHz, Cyrix III processors and has an upgradeable ZIF socket
- 2 × 168 pin 3.3V DIMM sockets for fast PC100/133 SDRAM
Memory expansion to a maximum 1024 MB RAM
- Advanced power management functions
- Supports the use of Windows 98/2000 and Linux: C.A./R.H. operating systems
- Supports a USB 1.44 MB 3.5-inch FDD drive
- Built-in 24X variable height CD-ROM or 8X DVD-ROM as well as an optional CD-RW
- Supports built-in HDD using ATA-66 Ultra DMA, LBA/PIO mode 4
- MDC 56Kbps V.90 Fax/Modem embedded in the SiS630
- 10/100Mb Fast Ethernet LAN embedded in the SiS630
- Power shut down - hold down the power button to automatically shut down the computer.

Multimedia

- 128-bit 3D AGP version 2 compliant graphic acceleration embedded in the SiS630
- Supports second CRT monitor
- VGA controller embedded, maximum true-color resolution 1024 × 768
- Video memory - 4/8/16/32/64 MB shared system memory
- Audio chip set embedded supporting AC97/98 3D sound effects, 16-bit stereo and Wavetable Synthesizer, compatible with Sound Blaster Pro/16 voice and music
- Line-in, Line-out, Mic-jack, and Game/MIDI interfaces

Connectivity

- Universal Serial Bus (USB) ports
- External VGA port for simultaneous LCD, Cathode Ray Tube (CRT) and TV (RCA) display support

External Components

Salient features of this main unit render the efficient operations of T-PAK Thin-Client PC and its connectivity to other peripheral devices. The integrated design of T-PAK Thin-Client PC also allows the user to save his working space and quickly learn how to use this system.

Front and Right Panels

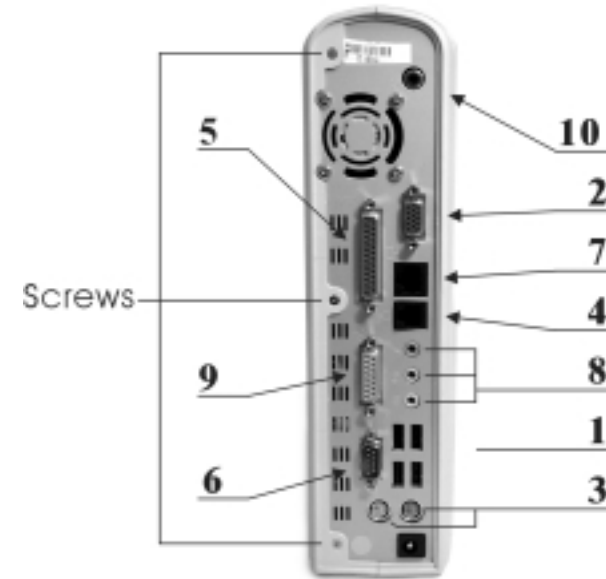
Your computer's front panel and right panel consist of the following:



1. Power button
2. Power LED (lights up when you press the power button)
3. Hard disk drive LED display (lights up when the hard disk is in use)
4. Email LED indicator
5. PC speaker
6. CD-ROM/DVD drive
7. CD-ROM/DVD activity LED (lights up when it is in use)
8. CD-ROM/DVD eject button
9. Decorative heat dispersion holes

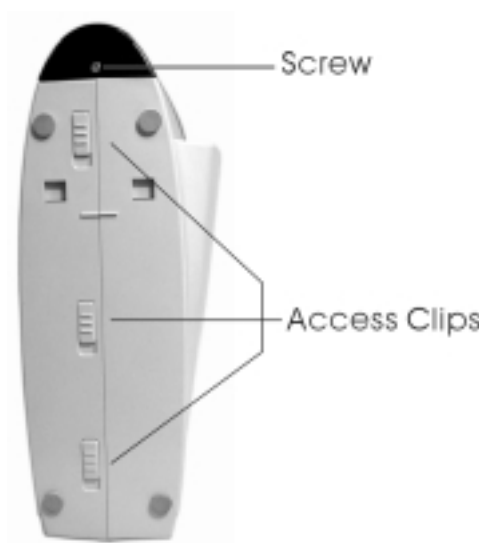
Back Panel - Ports

Your computer offers several ports that allow you to connect peripheral devices. These ports are found on the back panel of your computer:



1. USB connector × 4
2. 15-pin monitor connector
3. 6-pin PS/2 keyboard/keypad, mouse jack × 2
4. Modem jack (RJ-11)
5. Parallel port connector
6. Serial port: 9-pin D-Sub connector for COM1
7. LAN jack (RJ-45) 10 base-T LAN (embedded)
8. Three audio jacks: headphone/speaker-out, MIC-in, line-in
9. Game port connector
10. TBD: AC-3 (RCA); TV-OUT (RCA) (optional)

Base Panel



Access clips × 3 (for easy internal access along with the removal of four screws - three on the back [see the figure on the previous page] and one on the base of this unit)

Disk Drives

Your computer comes with the following disk drives:

CD-ROM/DVD Drive

Your CD-ROM/DVD drive, located on the right panel of the computer, allows you to play different types of Compact Discs (CDs).

Hard Disk Drive (required optional)

Your computer can be installed with a high-capacity Enhanced-IDE (E-IDE) hard disk drive. If you want to install, replace or upgrade your hard disk, contact your dealer or a qualified service technician

for support.

Chapter 3

Installing Drivers

Overview

This chapter contains step-by-step instructions on how to install your drivers.

Installing Drivers

Once your Windows system (e.g., Windows 98/2000) is installed, place the utility software CD in the drive and start installing the drivers and utilities that you need for the system. After you place your utility software CD, Autorun will automatically take you to the driver installation screen. The following drivers must be installed:

1. Install your PCMCIA driver. Select your operating system that you have just installed. Then, select the drivers you wish to install. For your PCMCIA driver, please follow the on-screen instructions, and the CD itself will automatically install the driver for you.
2. Install your VGA driver. Select VGA icon on the screen, and follow the on-screen instructions. Your VGA multimedia driver will then be automatically installed for you.
3. Install your Audio driver. Select Audio icon on the screen, and follow the on-screen instructions. Your Audio multimedia driver will then be automatically installed for you.
4. Install your LAN driver. Program path on the CD:
\\sis\\Lan\\Setup.exe.
5. Install the email LED indicator driver. Program path on the CD:
\\sis\\Mail_led\\Setup.exe.
6. When Windows 98 finds your MDC modem, the required drivers are located along this path on your CD: \\sis\\Modem\\Win98.

Chapter 4

An Easy Guide to BIOS

Overview

The BIOS (SCU) allows you to set up or restore hardware settings. However, most of these settings should only be changed by experienced users or technicians. This chapter will present an overall introduction of BIOS (SCU), which also includes how to enter the BIOS menu, how to navigate within the BIOS features using a keyboard or a mouse to change the settings, and a more detailed explanation toward different BIOS features.

BIOS (SCU)

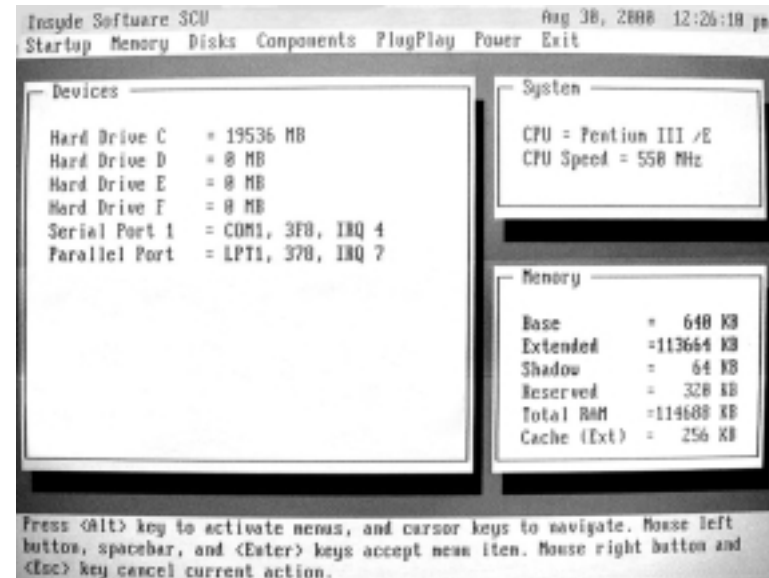
The BIOS is the program within the Flash Memory of the motherboard. This program does not lose any saved information after you shut down the computer, and is the only connection between the hardware and the software operating system. The BIOS is mainly responsible for managing the relevant parameter settings of the motherboard and the interface cards. The parameter settings include from simple ones such as time, date and the FDD/HDD/CD_ROM drives, to complicated ones such as the CPU internal cache, the processor serial number feature, and The CPU's hardware settings. Only with the correct settings within the BIOS, can the system be operated properly and be maintained in the best condition.

Entering the BIOS Setup Screen

Immediately after pressing the power button on the front panel of this unit, press and hold F2 until the BIOS screen appears.

BIOS Setup Screen Information

Below is your main BIOS screen:



It shows devices connected or installed, the system processor and speed, and installed memory allocation. From the screen above, you can access all BIOS features via pull-down menus.

BIOS Features Navigation

With the Mouse

You can navigate the BIOS features using a mouse. To activate pull-down menus and select features, just point and click.

With the Keyboard

To activate the pull-down menus, press <Alt> key, and use the cursor key to move around. Once you choose a feature, press the

spacebar or <Enter> keys to select that feature or make changes. In particular when navigating with keyboard, to select your choice, press the bold letter key to activate it.

Note: The right mouse button and the <Esc> key will cancel the current action.

BIOS Features

The following are the BIOS features and what they do:

Startup Menu

Configures startup conditions.

Date/Time

Is used to set system date and time.

Processor Serial Number

Enables/disables Processor Serial Number (changing this item must cold boot to take effect).

Splash Boot Logo

Displays big boot logo on screen when system is booting.

Fast Boot

Eliminates memory test and delays on power-up.

Boot Device

Selects alternate devices for boot-up.

Boot Password

Sets password for booting computer.

SCU Password

Sets password for modifying SCU (BIOS).

Memory Menu

Configures memory usage.

Cache Systems

Internal and external cache settings.

Shared Memory

Sets shared video memory size.

Disks Menu

Configures disk drives.

Internal HDC (Hard Disk Controller)

Enables internal hard disk controller.

IDE Settings

Enables enhanced IDE settings.

Virus Alert

Enables warning if sector 0 of bootable disk has been changed.

Components Menu

Configures peripheral devices.

COM Ports

Configures serial (COM) port I/O addresses.

LPT Ports

Selects parallel (printer) port I/O address and IRQ assignment.

MDC Modem

Enables MDC modem.

USB Port

Enables legacy USB port.

Keyboard Num Lock

Starts computer with Num Lock enabled.

Keyboard Repeat

Sets keyboard auto repeat delay and repeat rate.

Game Port

Configures Game port I/O addresses.

Plug/Play Menu

Configures Plug/Play.

Enable VGA Palette Snoop

If a multimedia ISA controller is installed- enable this feature.

Configure PCI Slot

Sets up parameters for PCI slot device.

Power Menu

Configures battery and power management.

Enable Power Saving

Enables all power saving features.

Low Power Saving

Sets power saving to lowest settings.

Medium Power Saving

Sets power saving to medium settings.

High Power Saving

Sets power saving to highest settings.

Suspend Control

Sets suspend timeouts, resume alarm, and immediate suspend.

Resume Timer

Sets when the system resumes from suspend state.

Advance CPU Controls

Sets processor controls.

Exit Menu

Uses default settings, saves current setup, and/or exits SCU (BIOS).

Save and Exit

Saves current settings and returns to previous work.

Exit (No Save)

Exits without saving current settings.

Default Settings

Sets current setup to default settings.

Restore Settings

Restores current setup to original settings.

Version Info

Reports current BIOS version information.