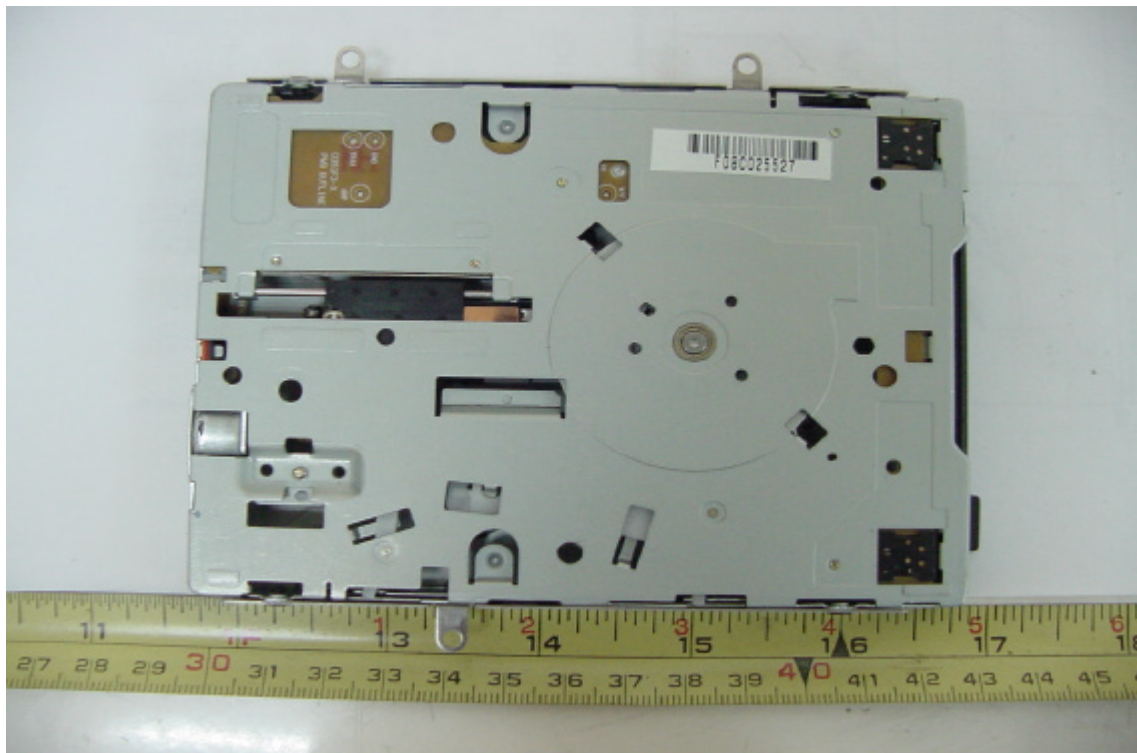


CONSTRUCTED PHOTOS of EUT

Front View of Floppy Drive Disk



Rear View of Floppy Drive Disk

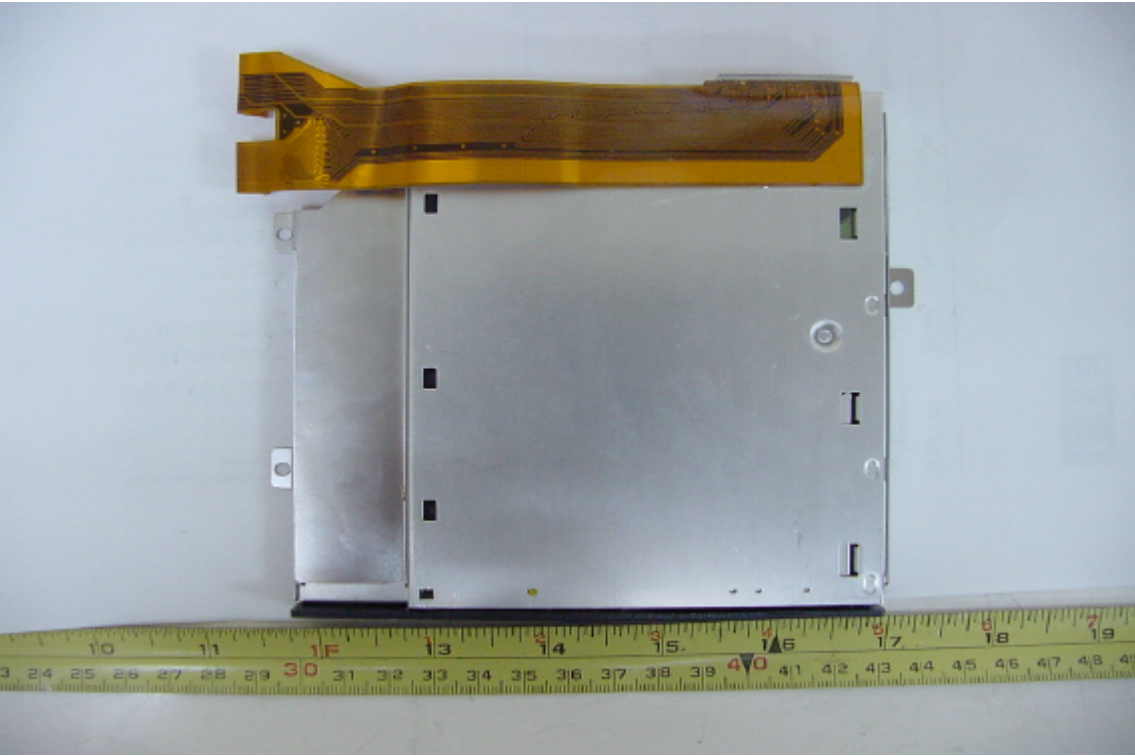


CONSTRUCTED PHOTOS of EUT

Front View of CD-ROM

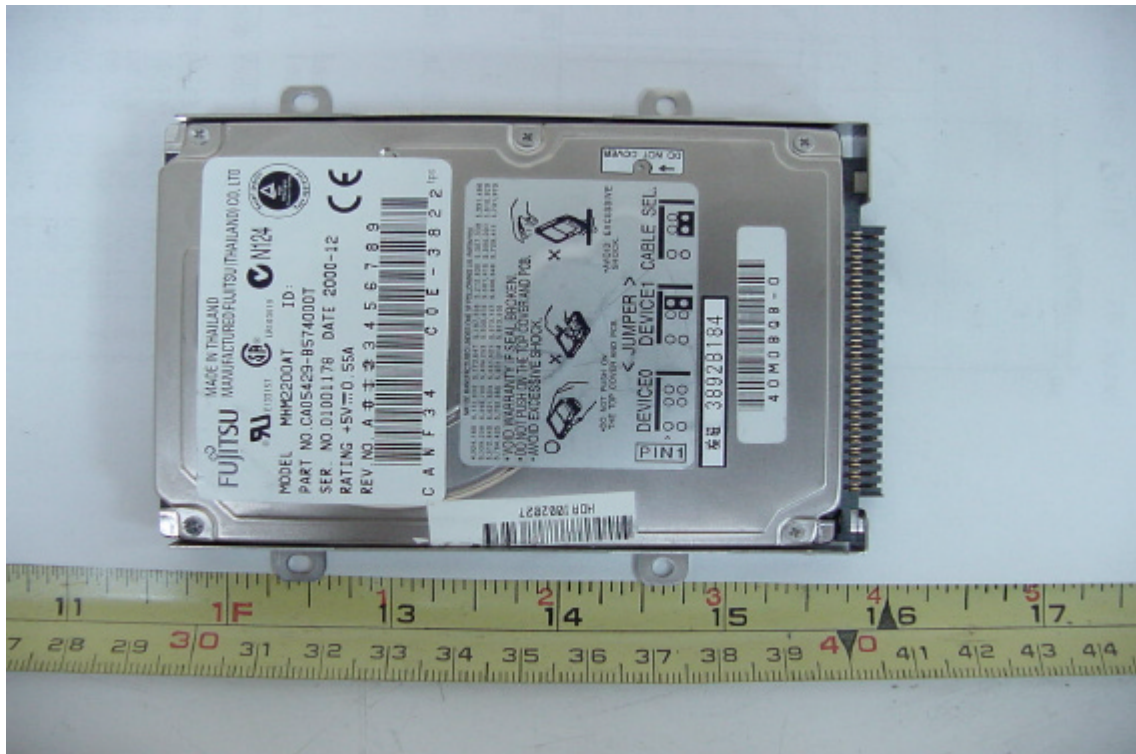


Rear View of CD-ROM

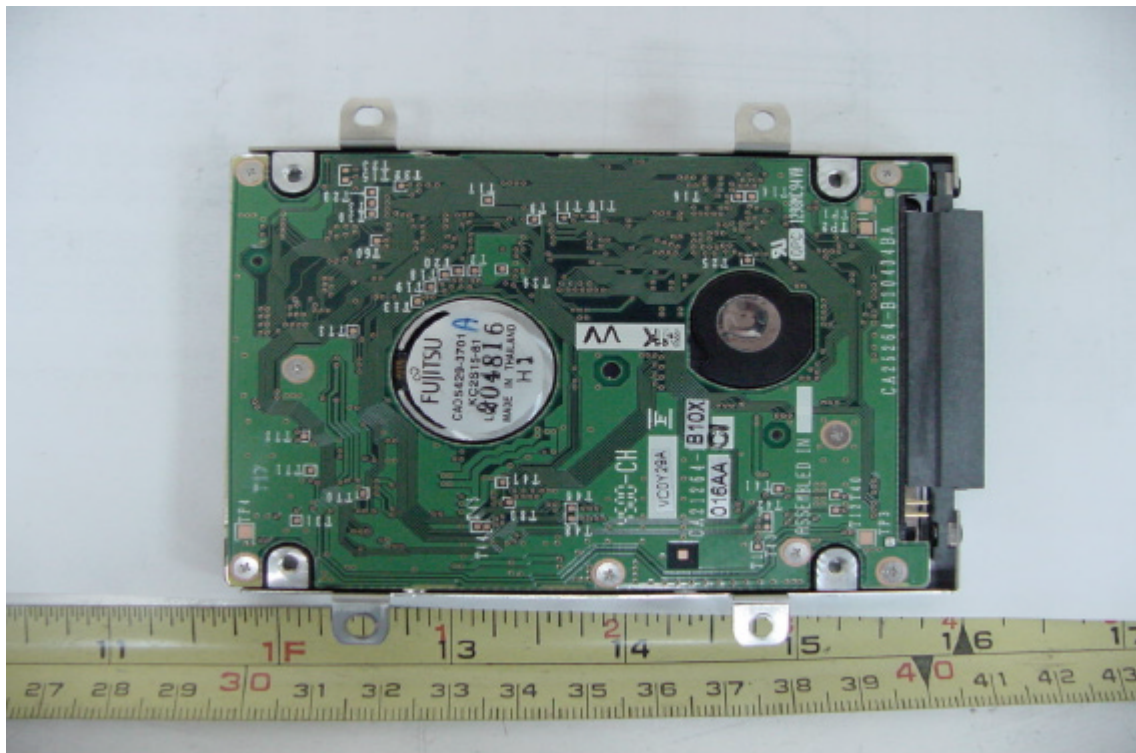


CONSTRUCTED PHOTOS of EUT

Front View of Hard Disk Drive



Rear View of Hard Disk Drive

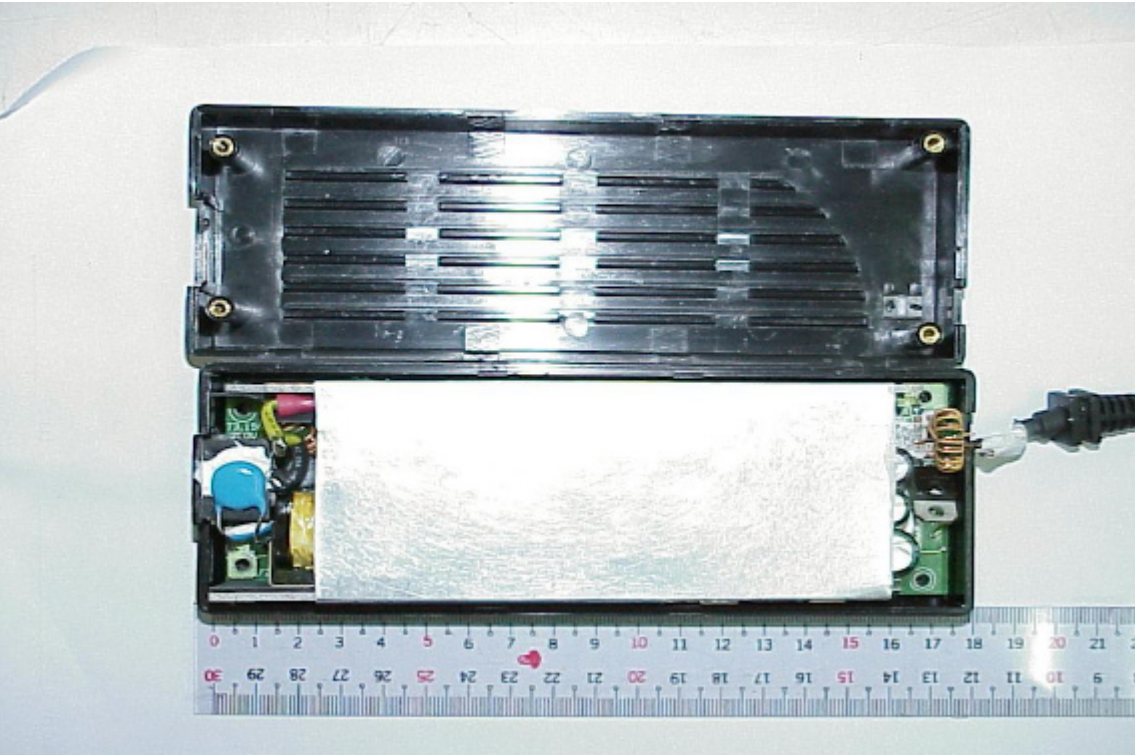


CONSTRUCTED PHOTOS of EUT

Front View of Battery

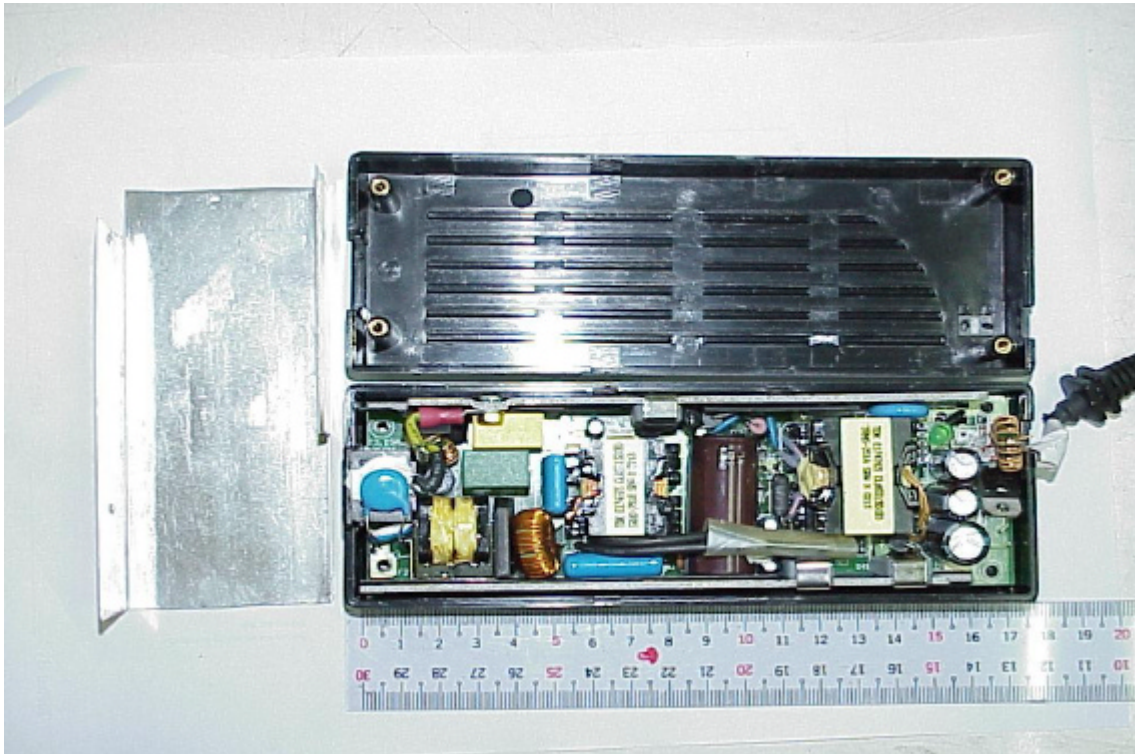


Inter View of Adaptor 1

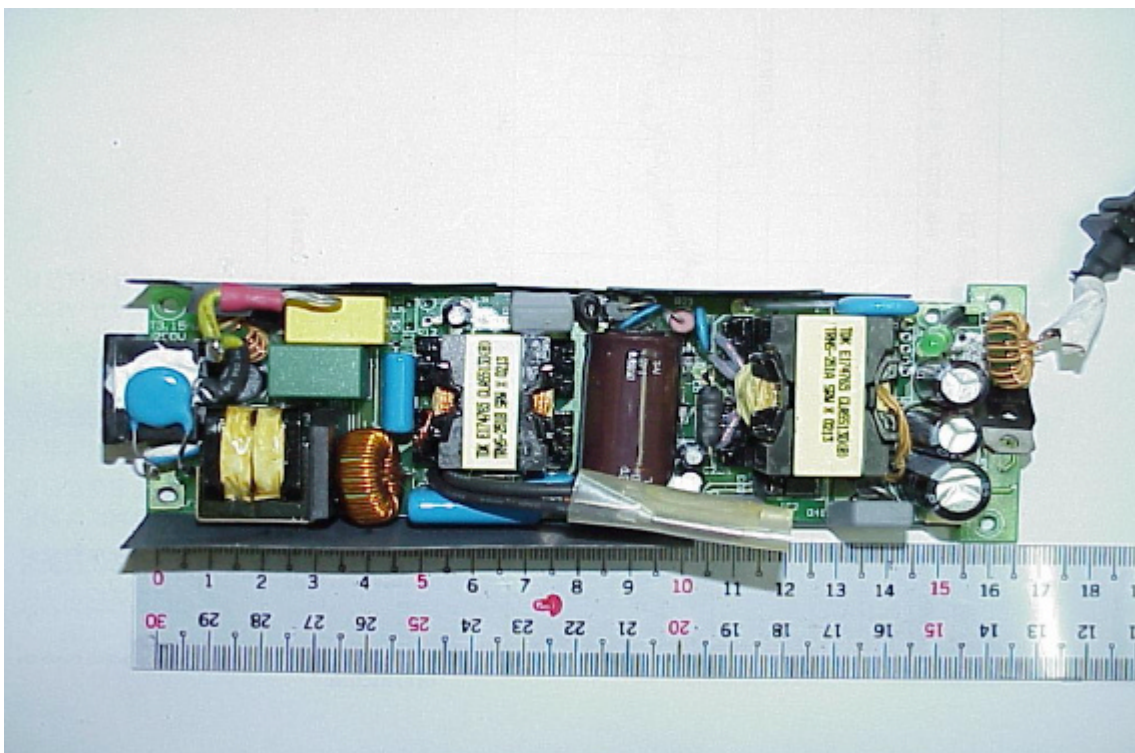


CONSTRUCTED PHOTOS of EUT

Inter View of Adaptor 1

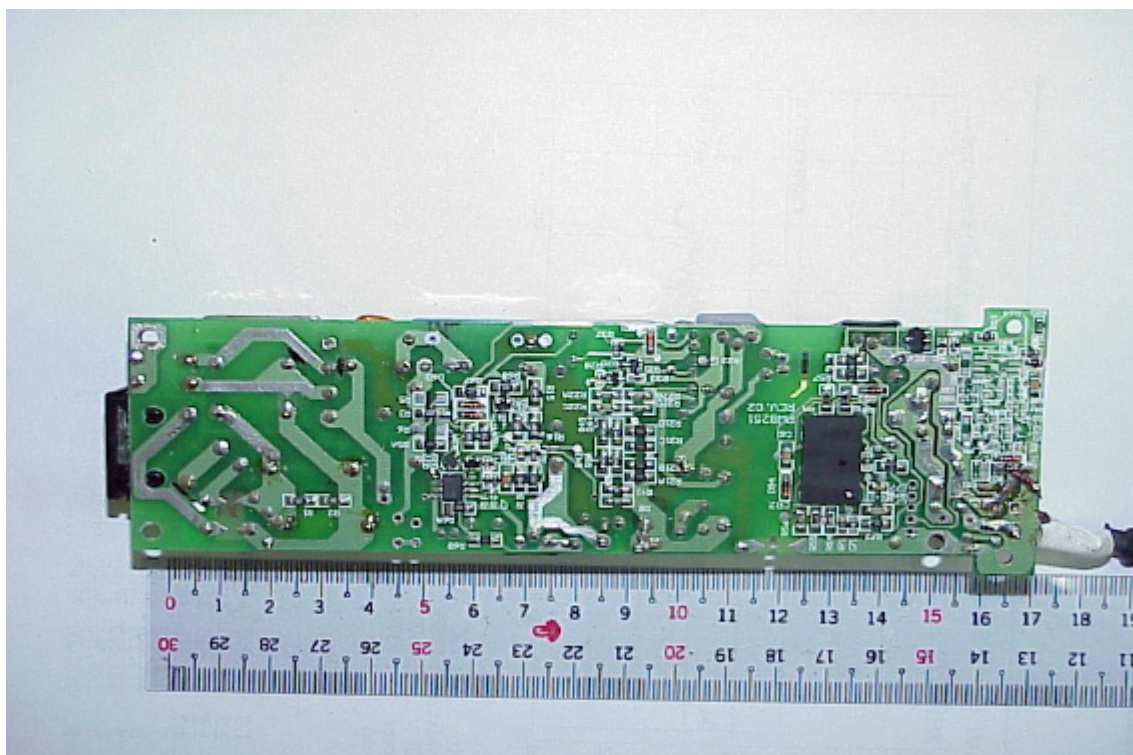


Component View of Adaptor' s PCB (Adaptor 1)

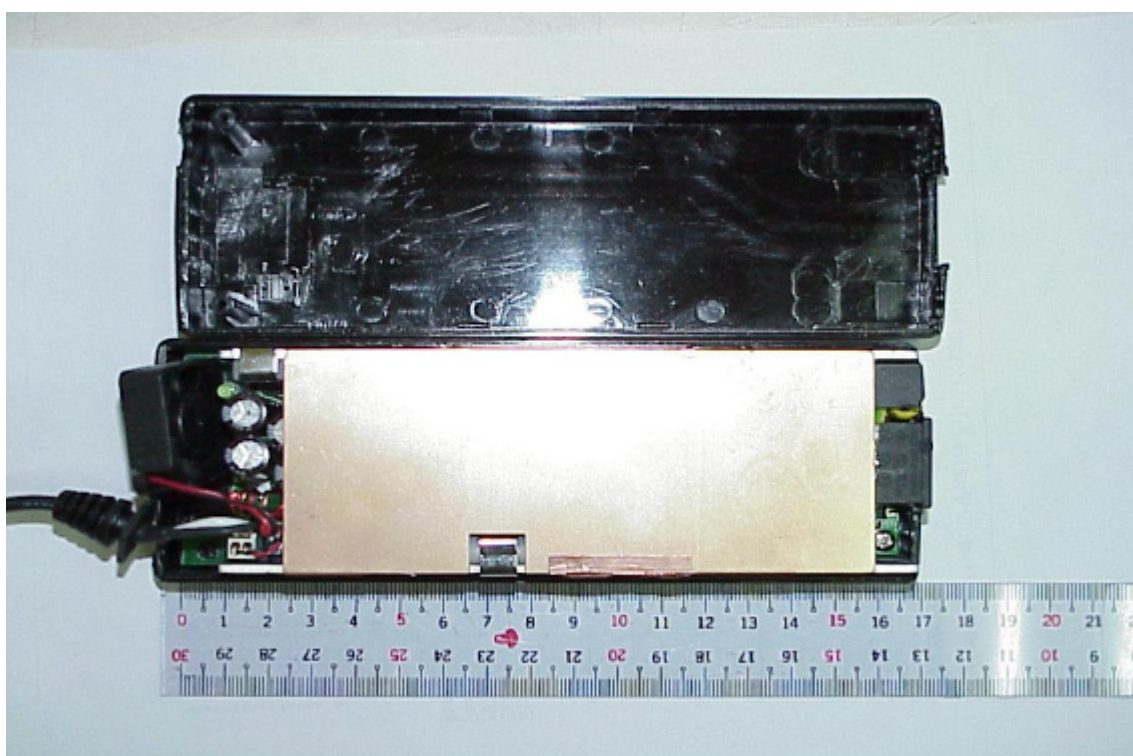


CONSTRUCTED PHOTOS of EUT

Solder View of Adaptor's PCB (Adaptor 1)



Internal View of Adaptor 2

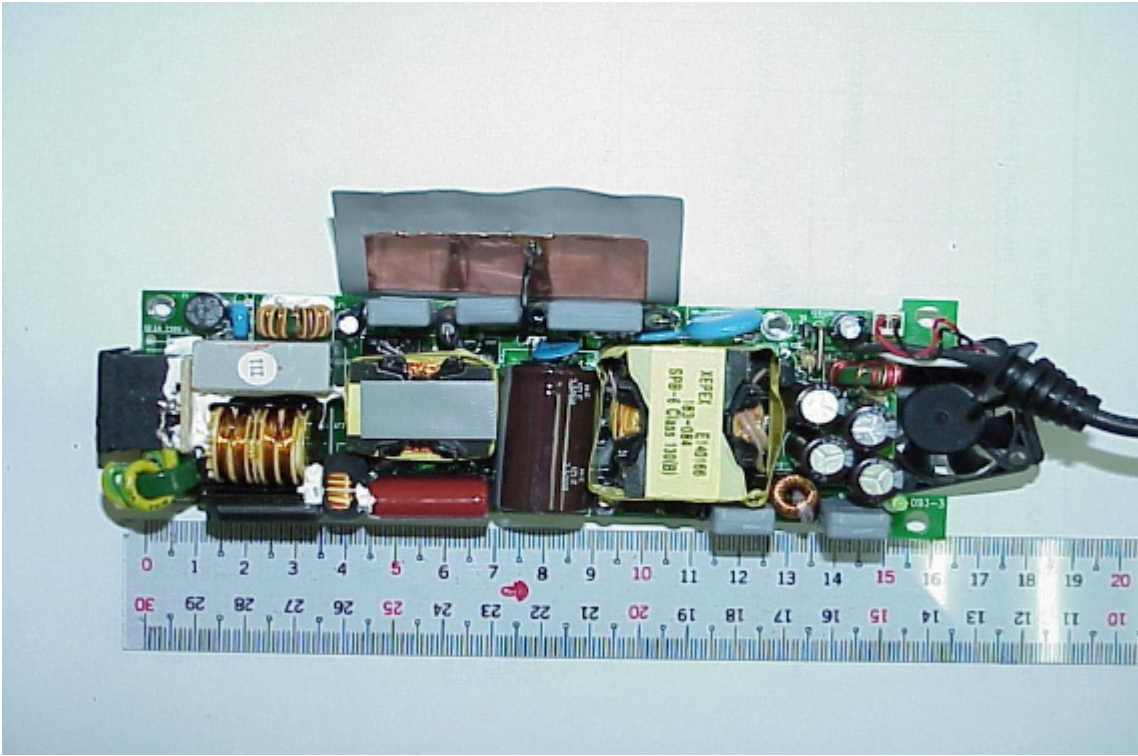


CONSTRUCTED PHOTOS of EUT

Internal View of Ataptor 2



Component View of Adapter's PCB 2 (Adapter 2)



CONSTRUCTED PHOTOS of EUT

Solder View of Adaptor's PCB (Adaptor 2)

