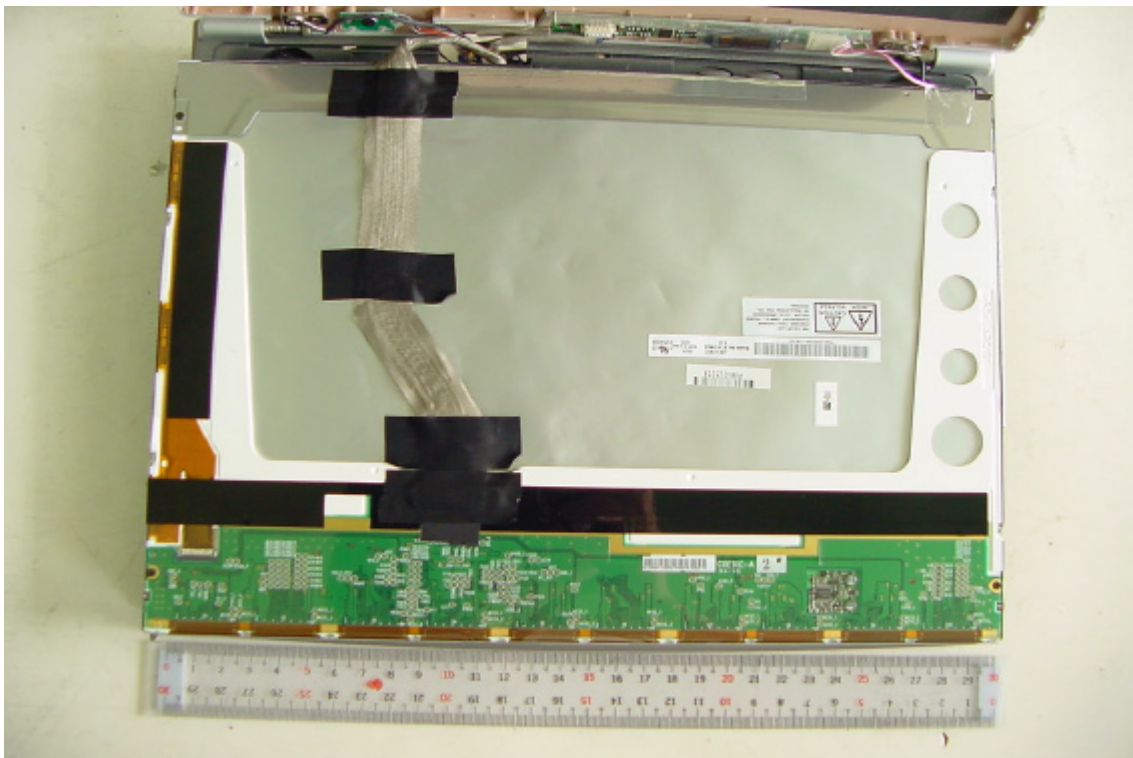


## CONSTRUCTED PHOTOS of EUT

Component View of LCD Panel



Solder View of LCD Panel



## CONSTRUCTED PHOTOS of EUT

Front View of Battery

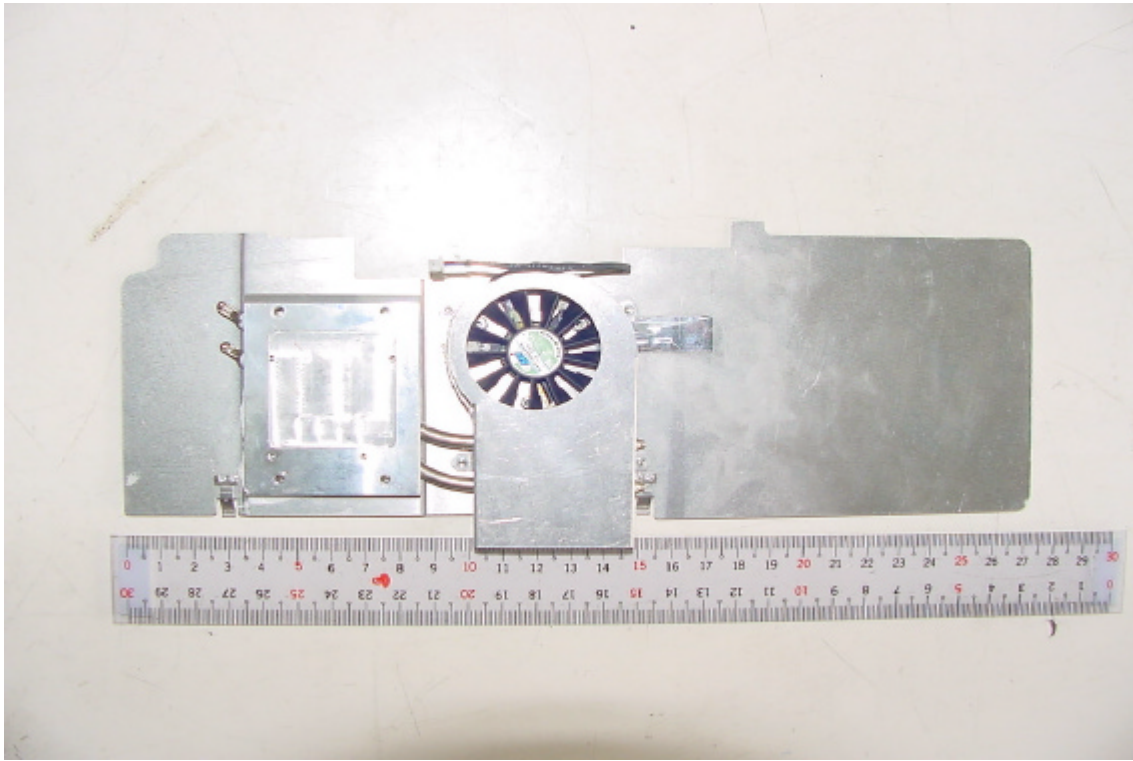


Rear View of Battery



## CONSTRUCTED PHOTOS of EUT

Total View of FAN

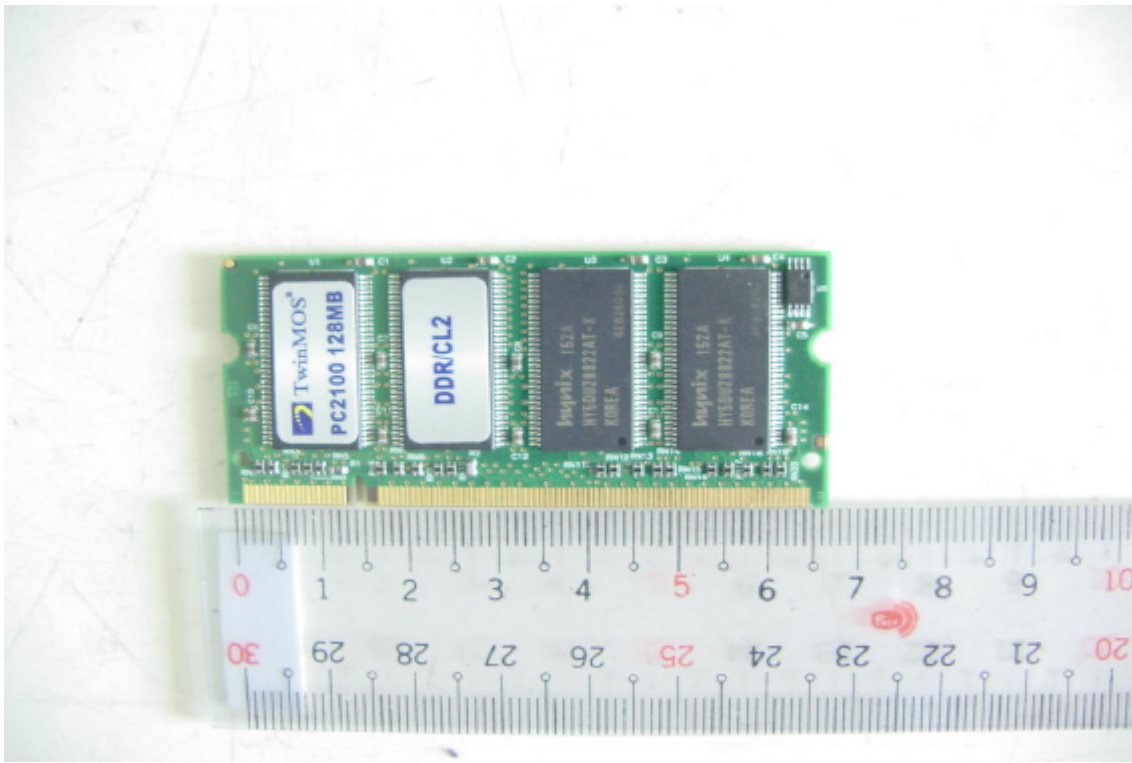


Front View of DDR RAM



## CONSTRUCTED PHOTOS of EUT

Rear View of DDR RAM



Front View of CD-ROM



## CONSTRUCTED PHOTOS of EUT

Rear View of CD-ROM

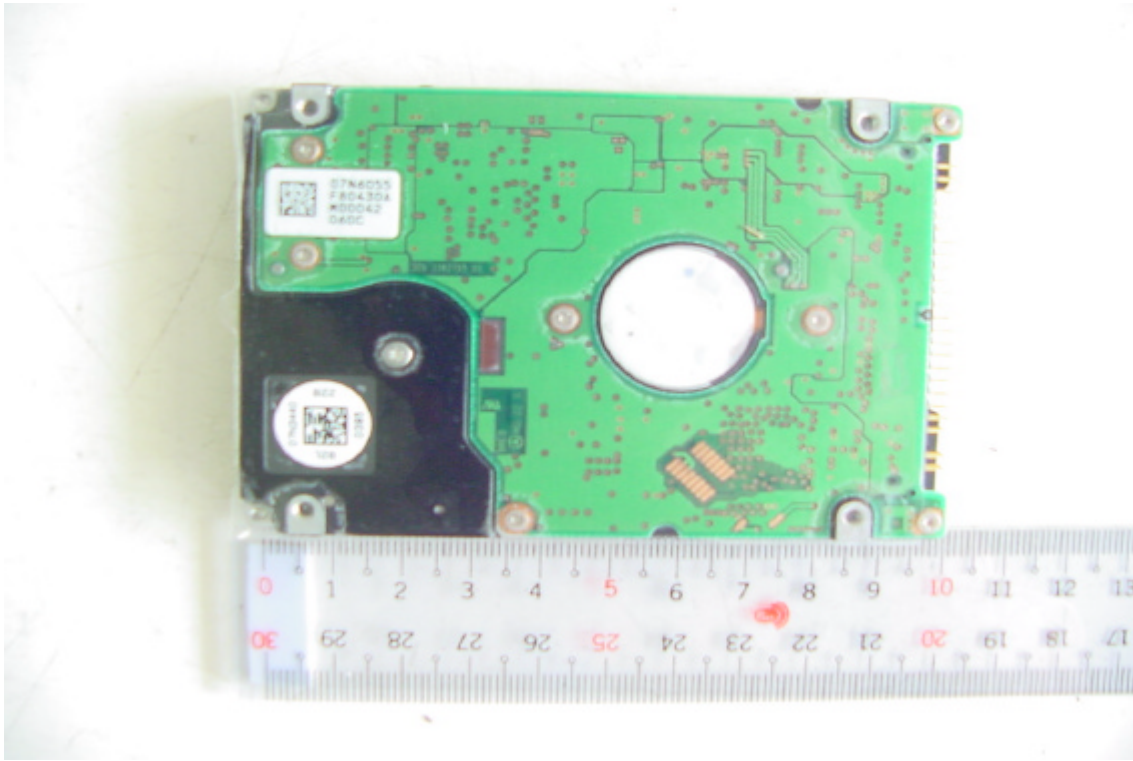


Front View of Hard Disk Drive

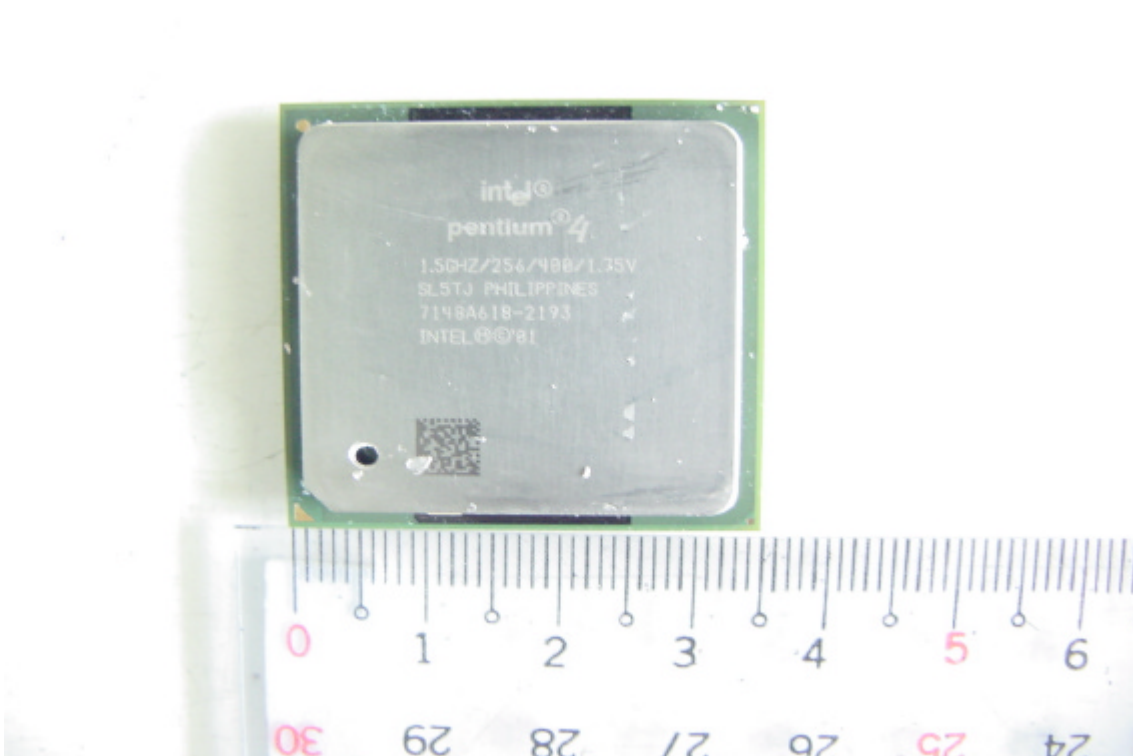


## CONSTRUCTED PHOTOS of EUT

Rear View of Hard Disk Drive

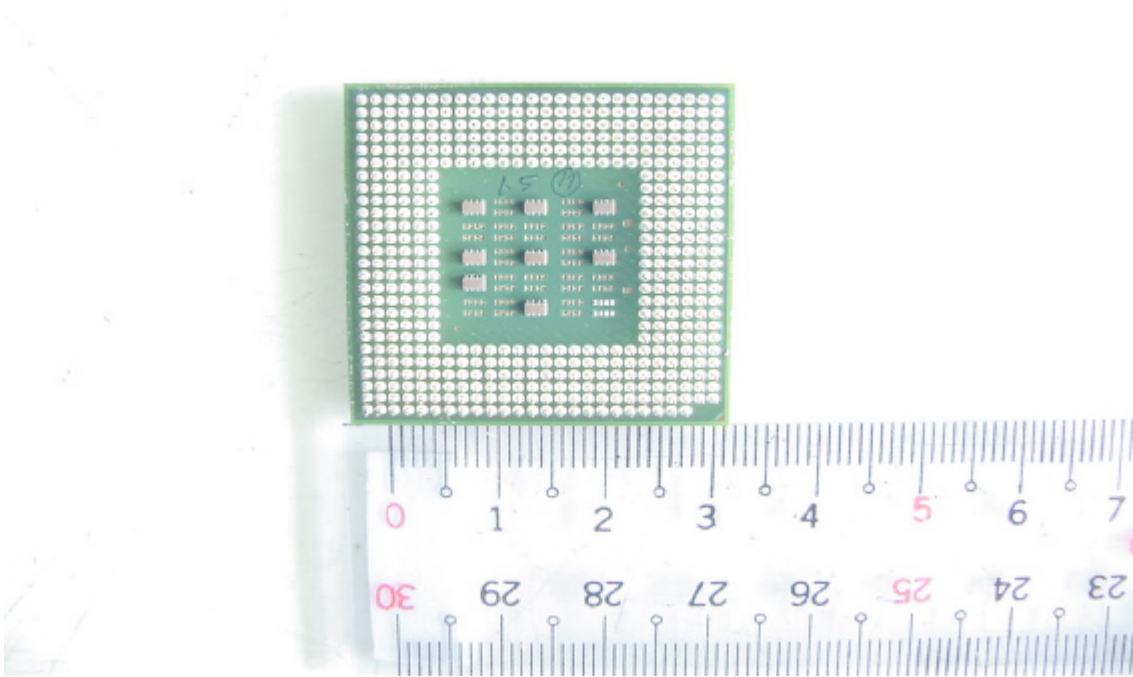


Front View of CPU

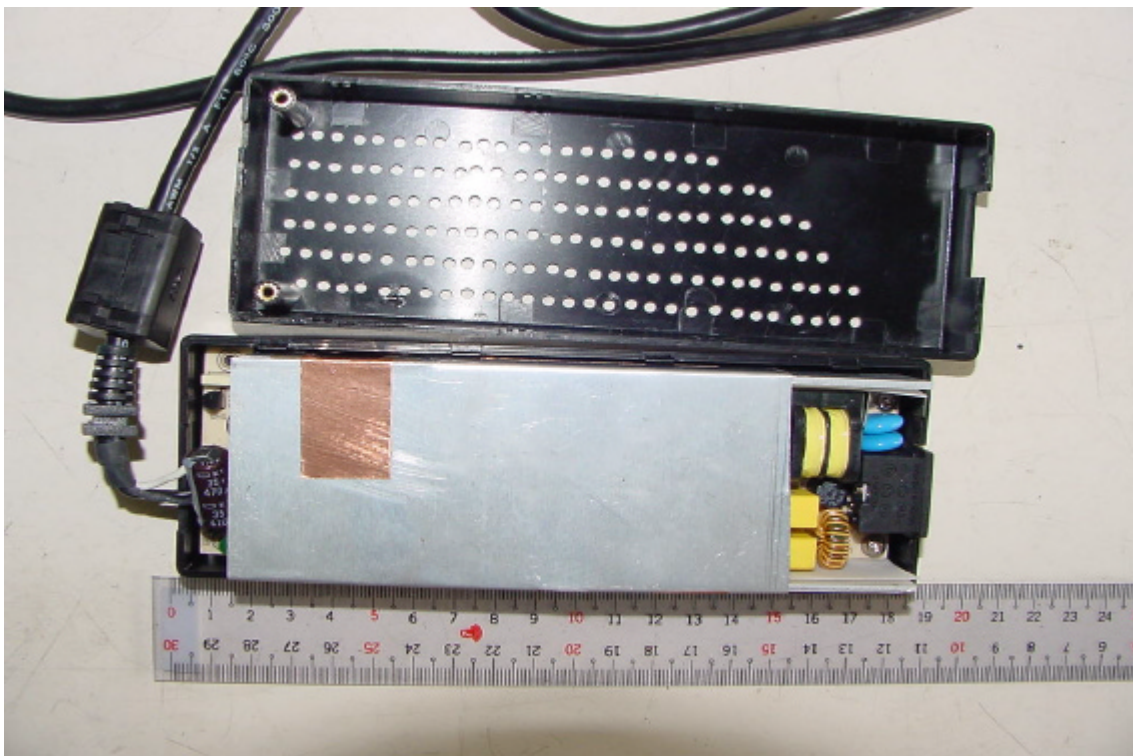


## CONSTRUCTED PHOTOS of EUT

Rear View of CPU

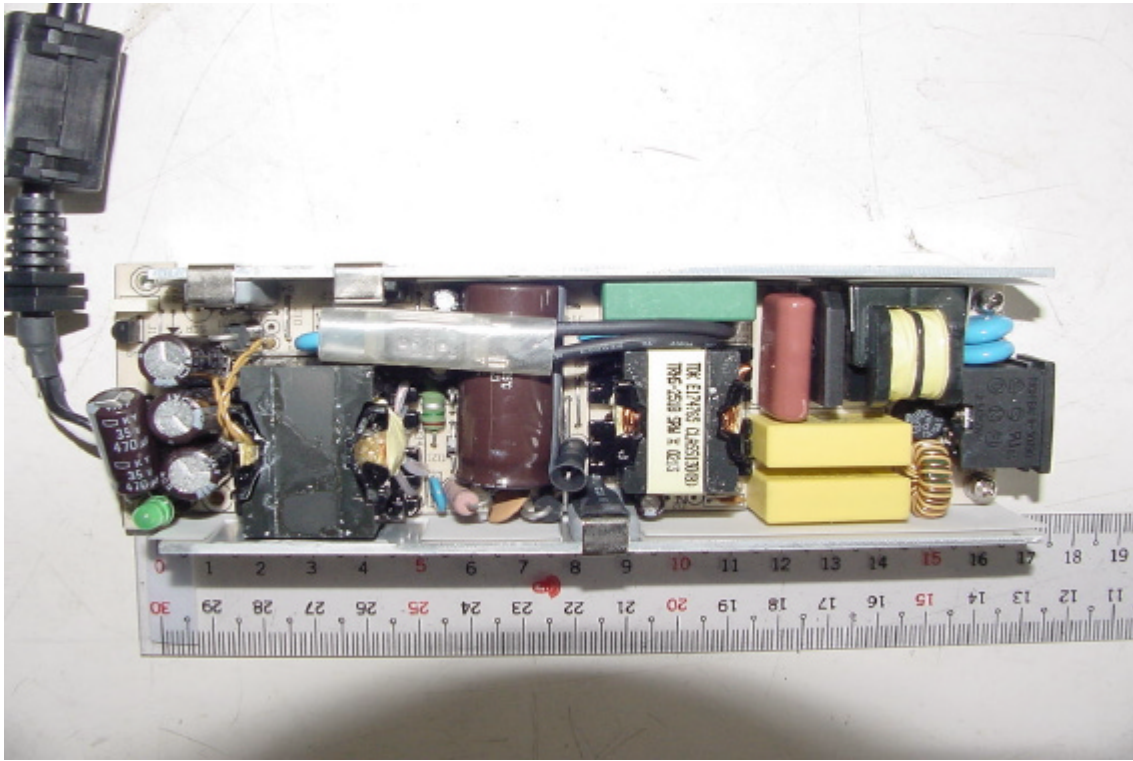


Internal View of Adaptor 1

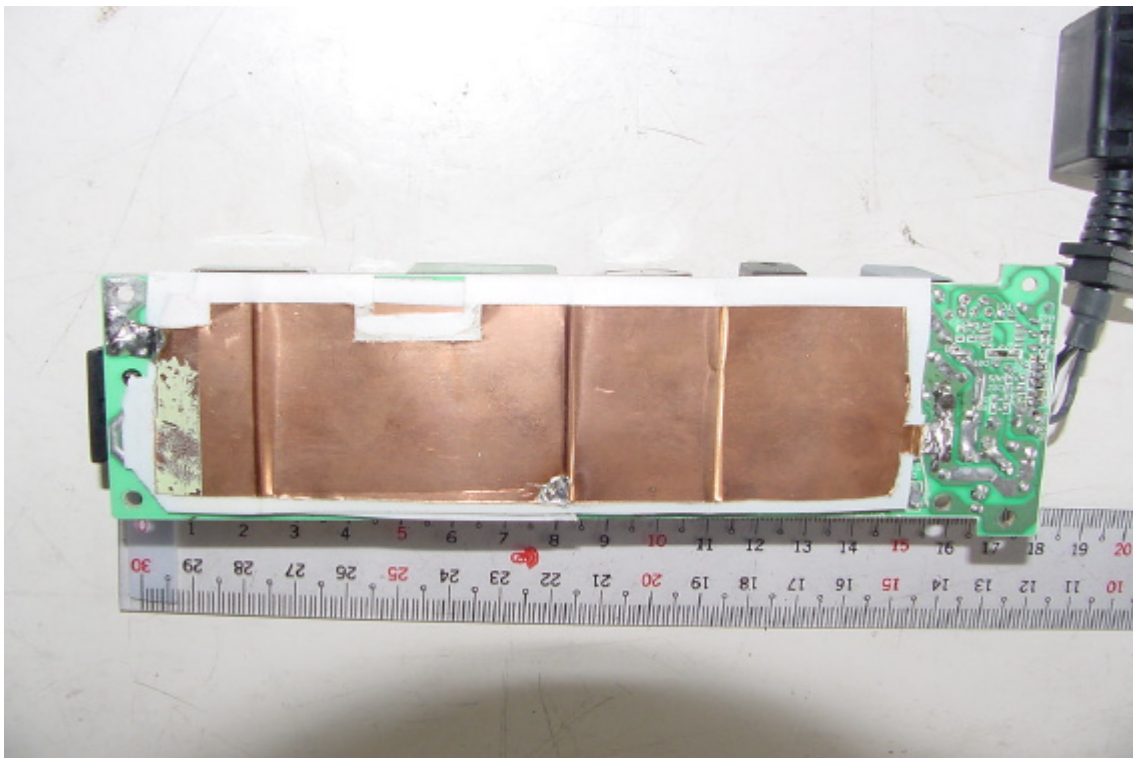


## CONSTRUCTED PHOTOS of EUT

Component View of Adaptor's 1 PCB

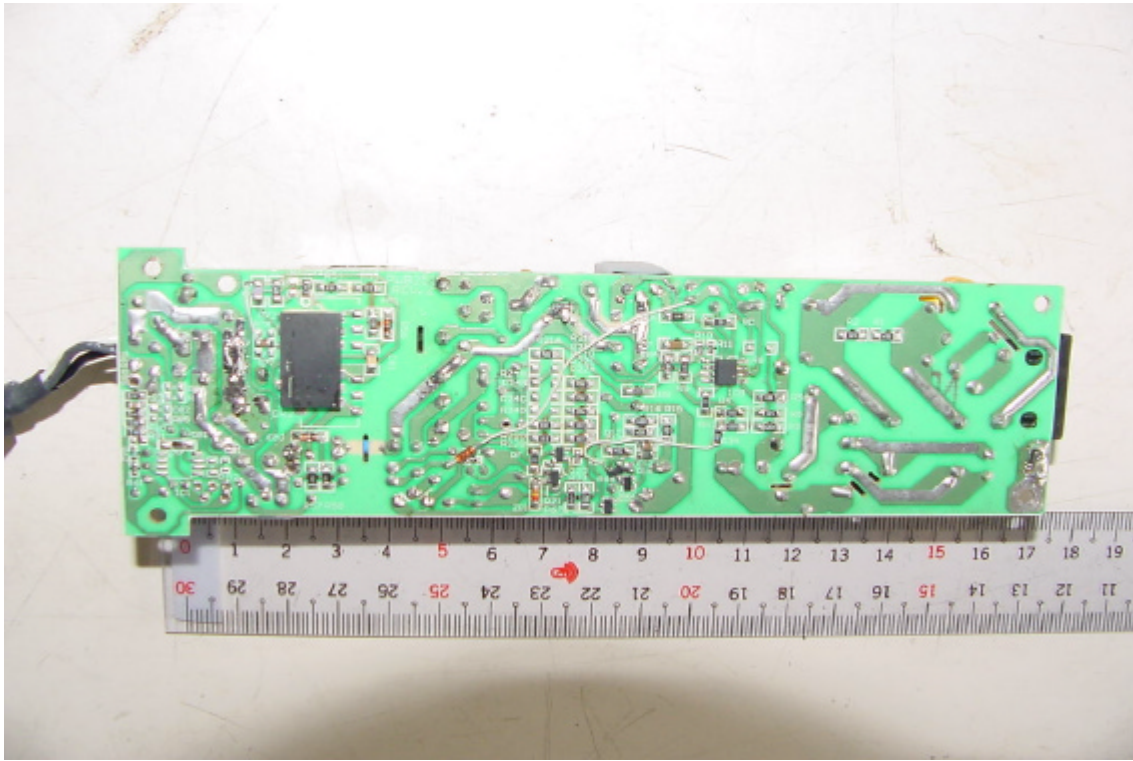


Solder View of Adaptor's 1 PCB



## CONSTRUCTED PHOTOS of EUT

### Solder View of Adaptor's 1 PCB

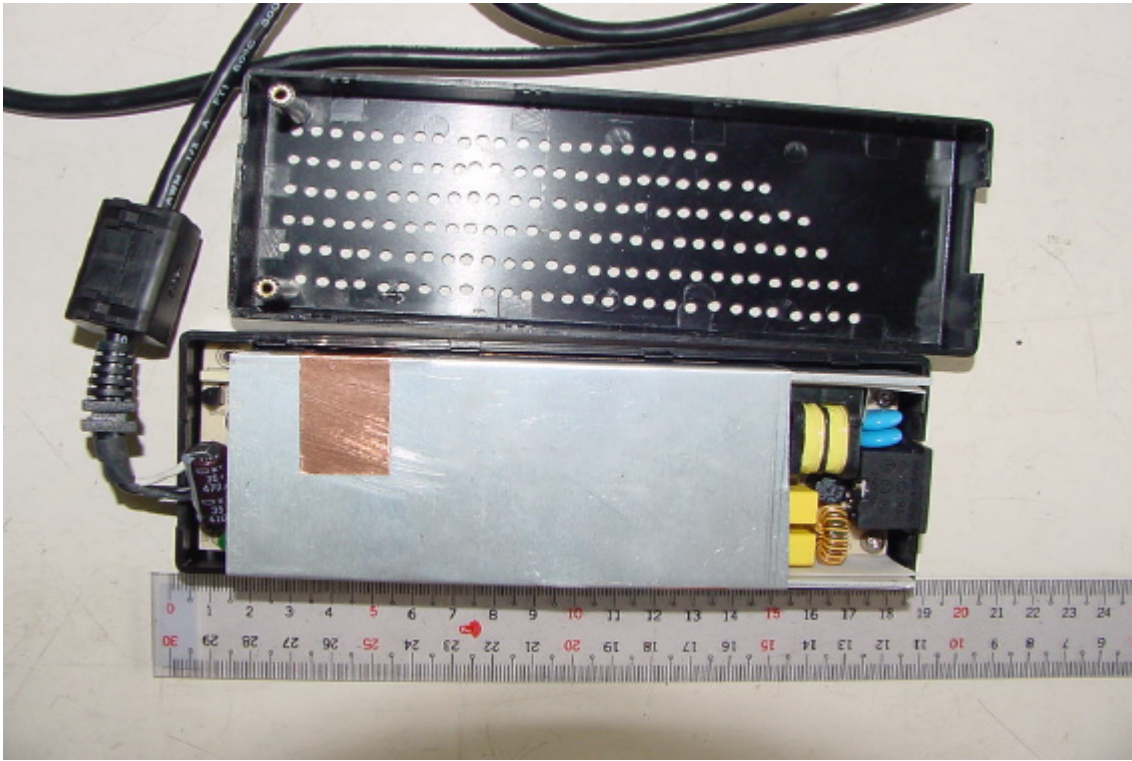


Rear View of Adaptor 2

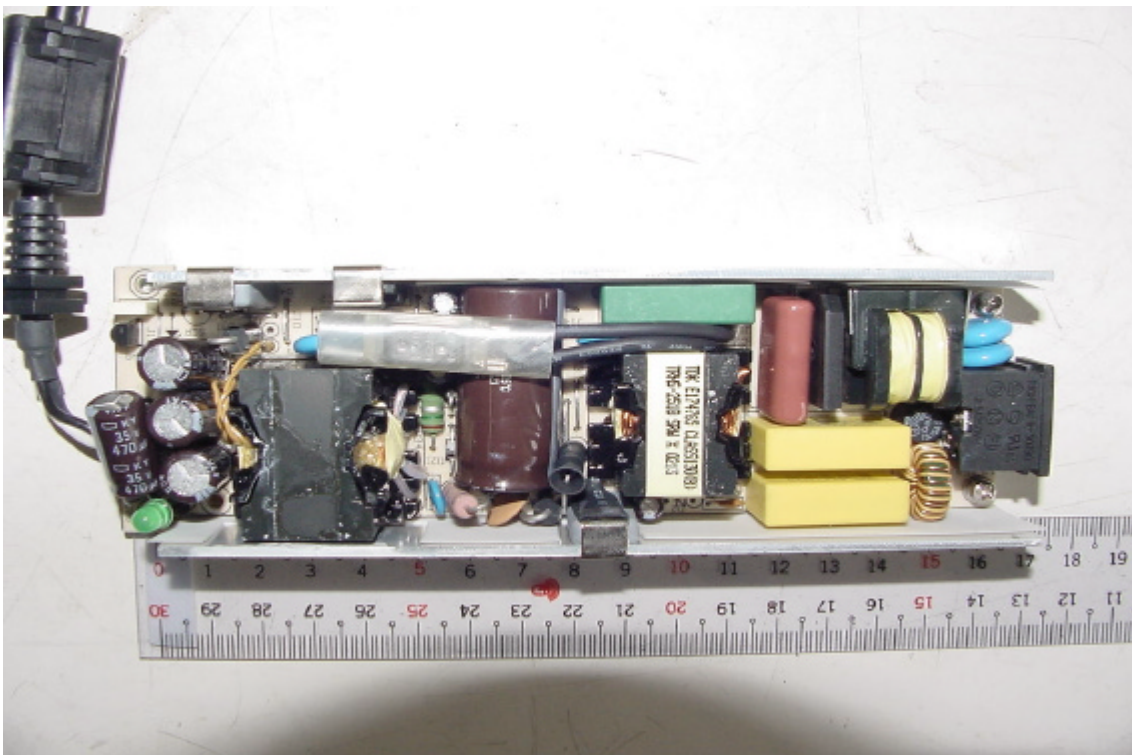


## CONSTRUCTED PHOTOS of EUT

Internal View of Adaptor 2

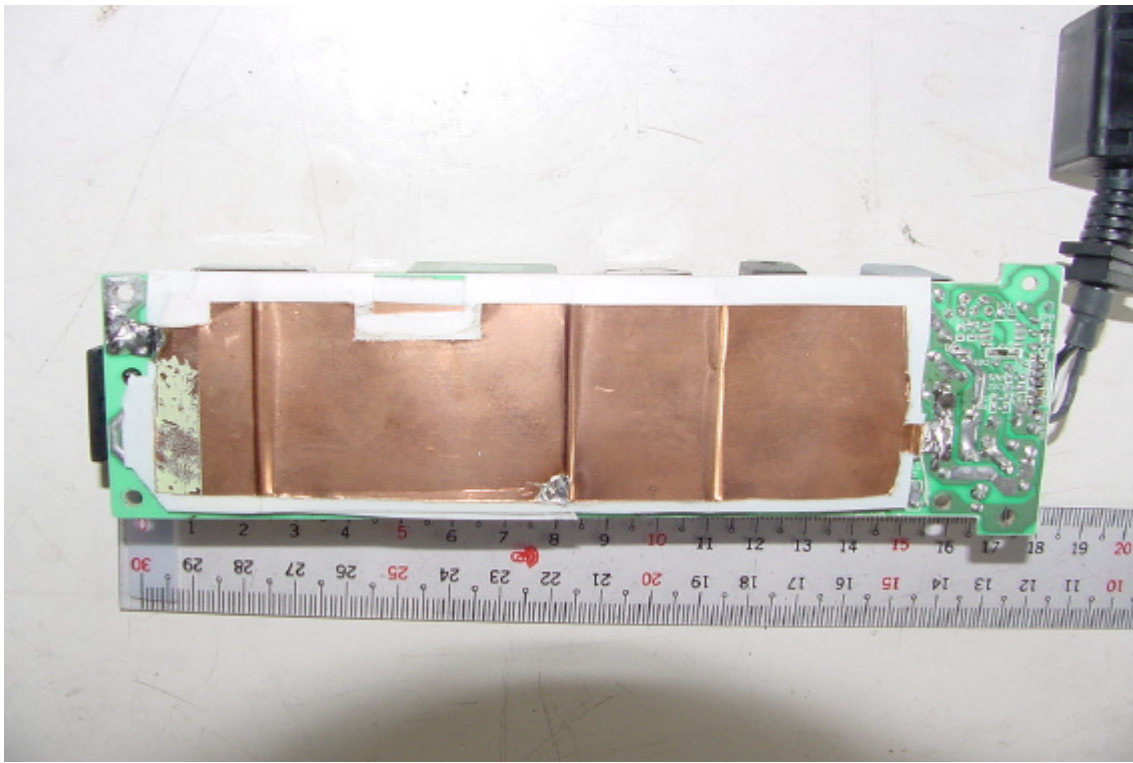


Component View of Adaptor's 2 PCB



## CONSTRUCTED PHOTOS of EUT

Solder View of Adaptor's 2 PCB



## CONSTRUCTED PHOTOS of EUT

### 49. Solder View of Adaptor's 2 PCB

