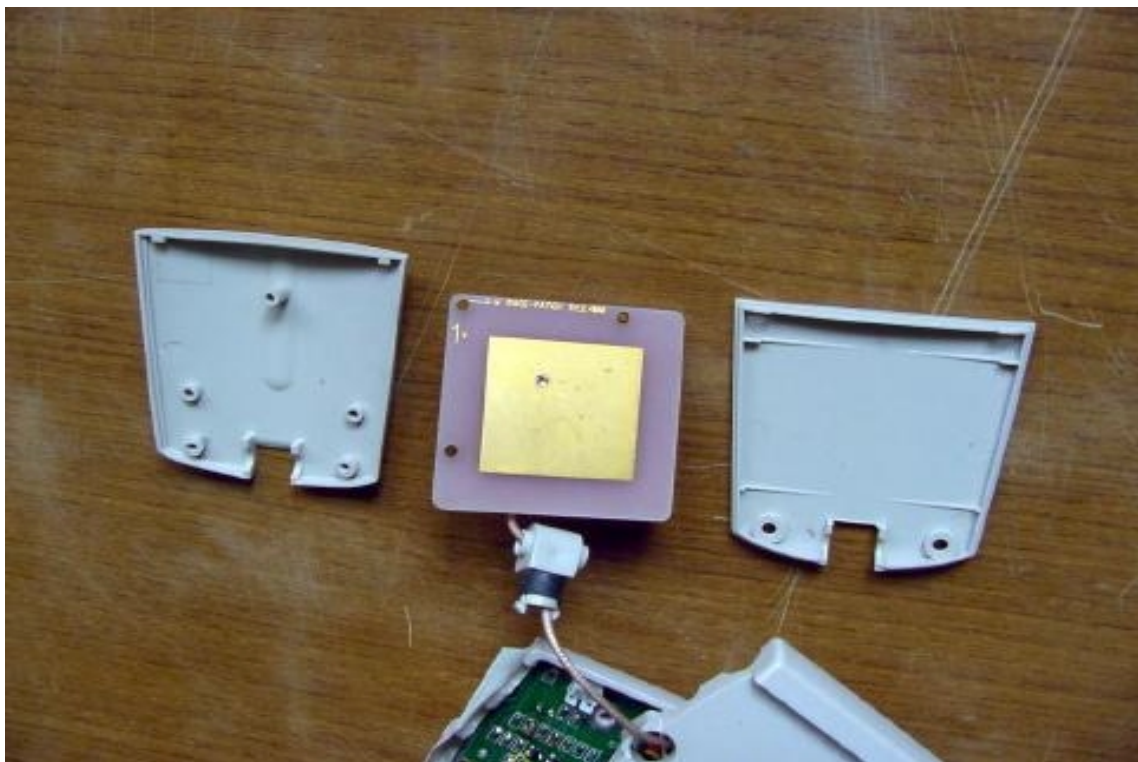


CONSTRUCTED PHOTOS of EUT

1. Internal View of EUT

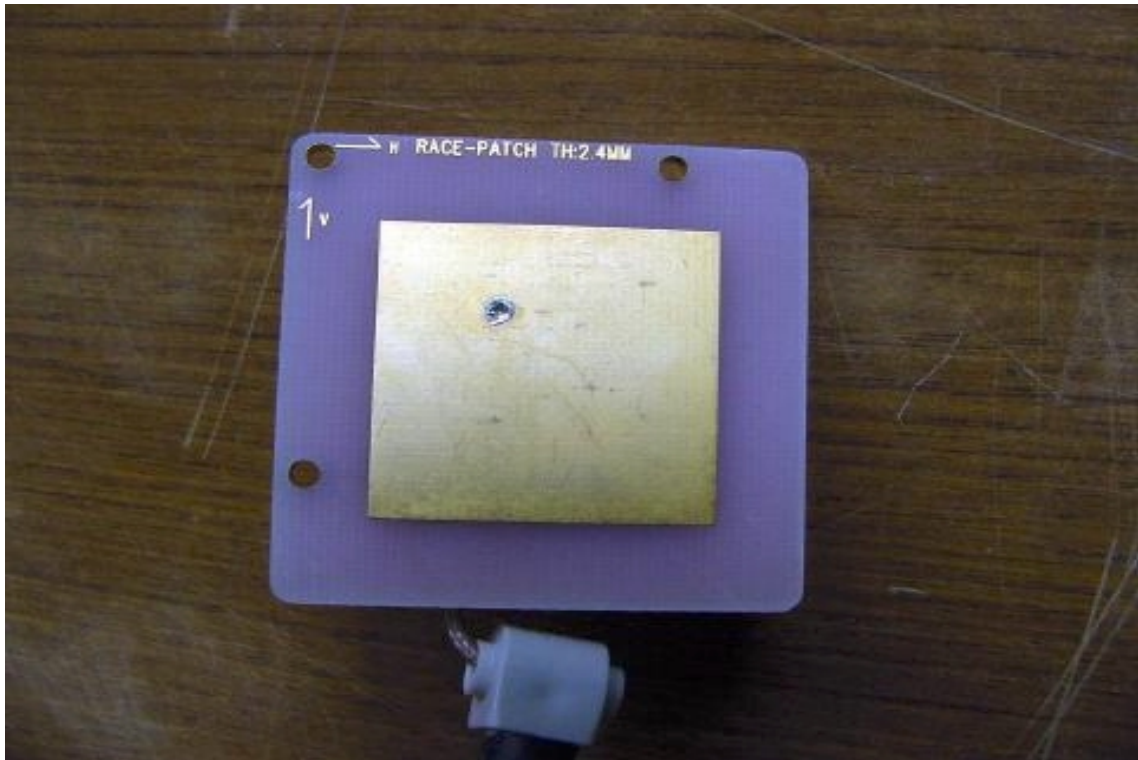


2. Internal View of Antenna Box

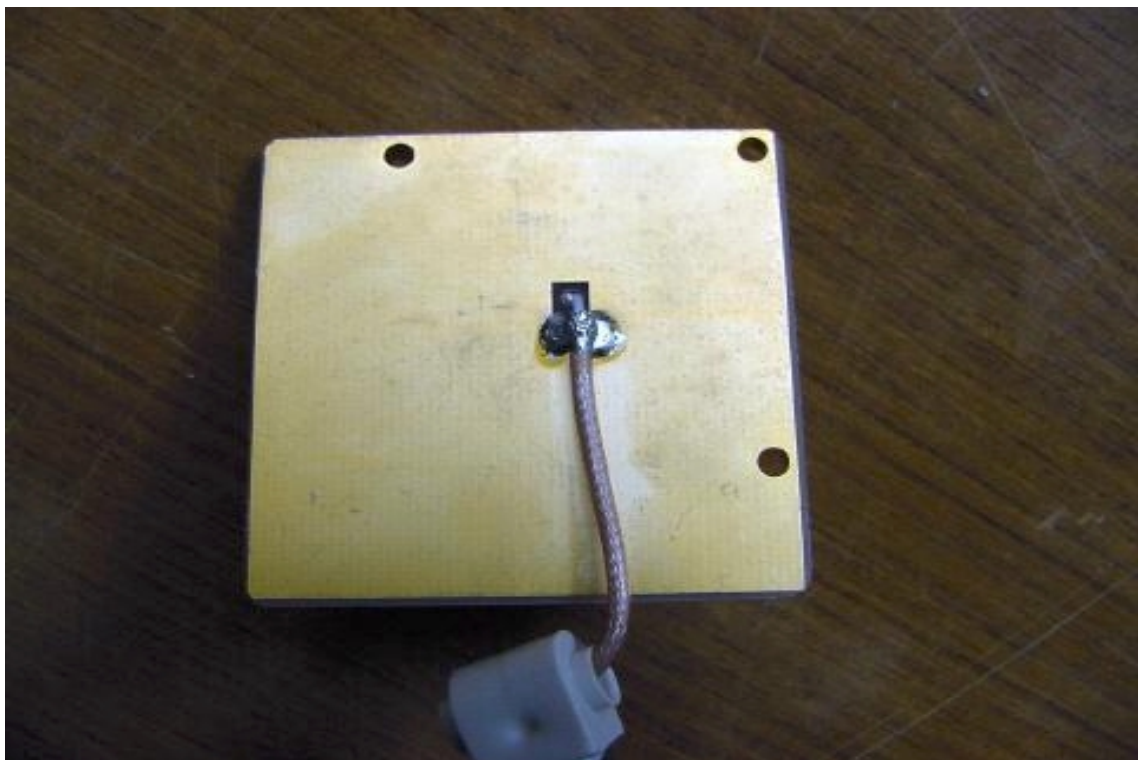


CONSTRUCTED PHOTOS of EUT

3. Component View of Antenna's PCB

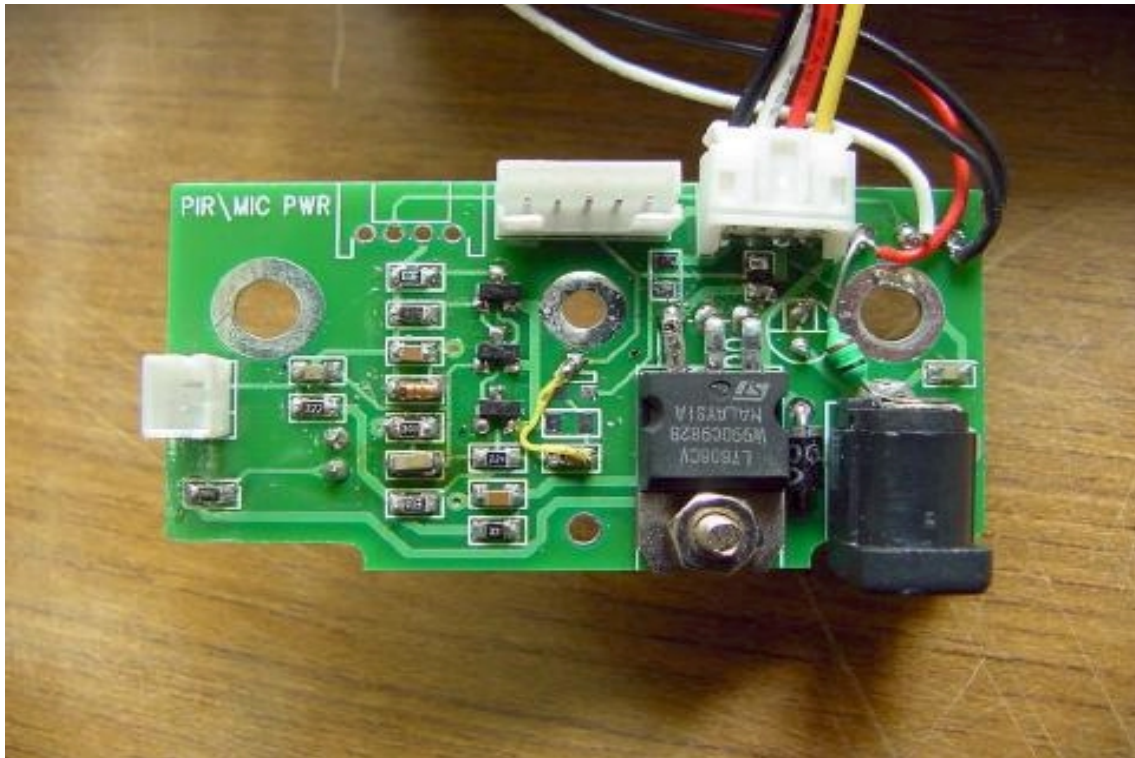


4. Solder View of Antenna's PCB

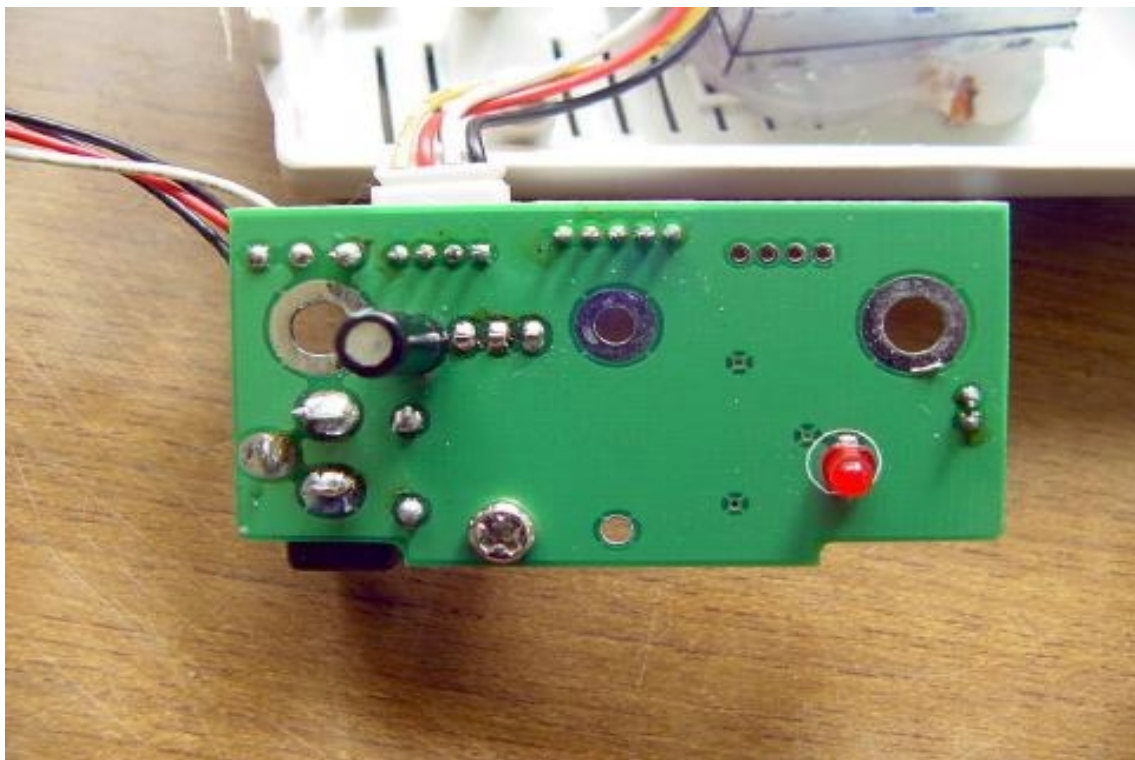


CONSTRUCTED PHOTOS of EUT

5. Component View of Main Board

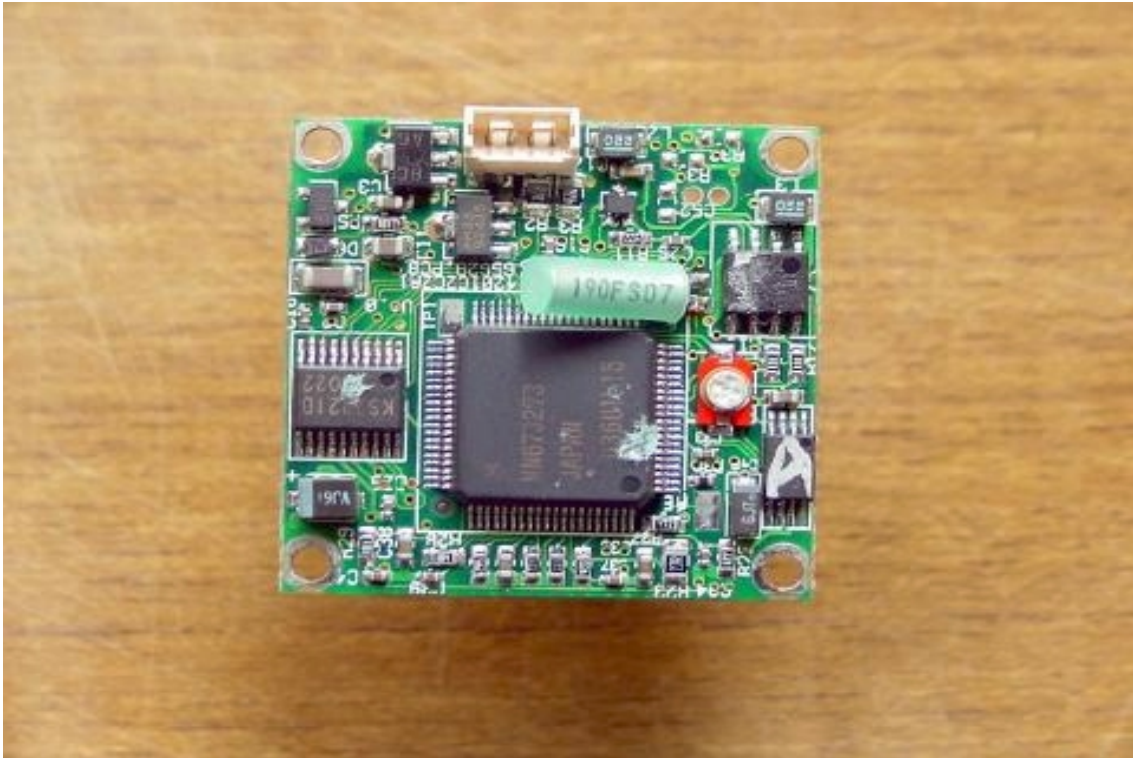


6. Solder View of Main Board

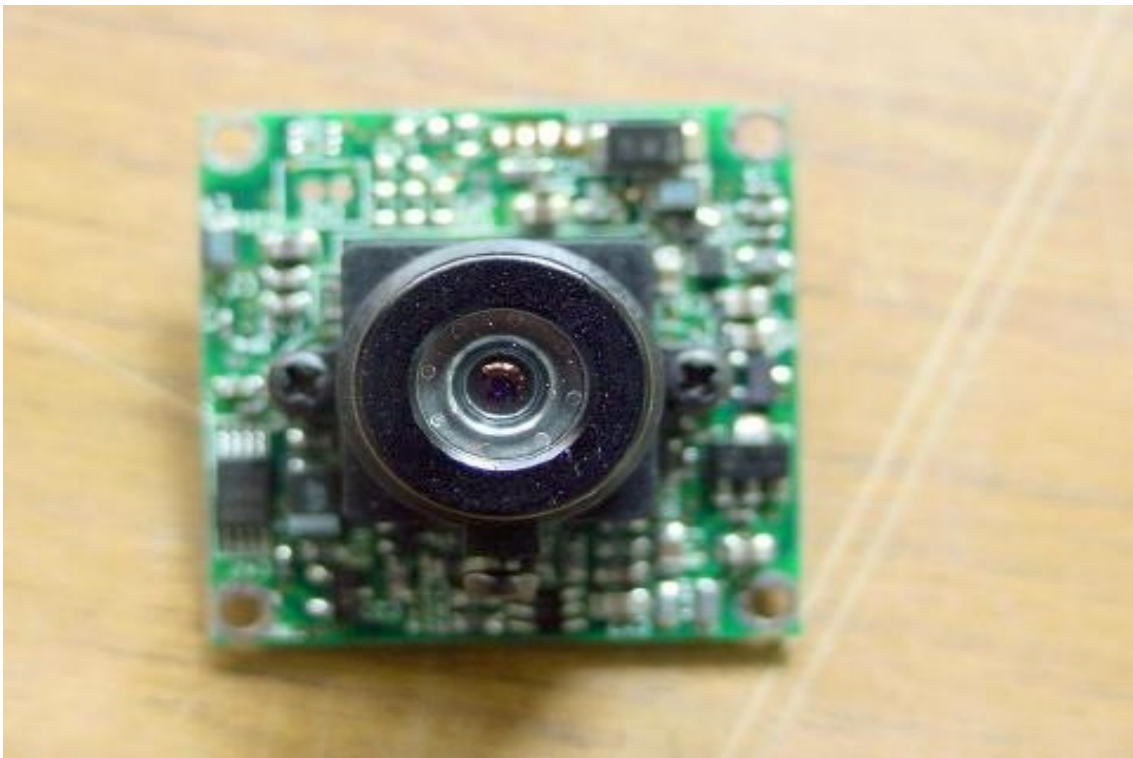


CONSTRUCTED PHOTOS of EUT

7. Component View of CCD PCB



8. Solder View of CCD PCB

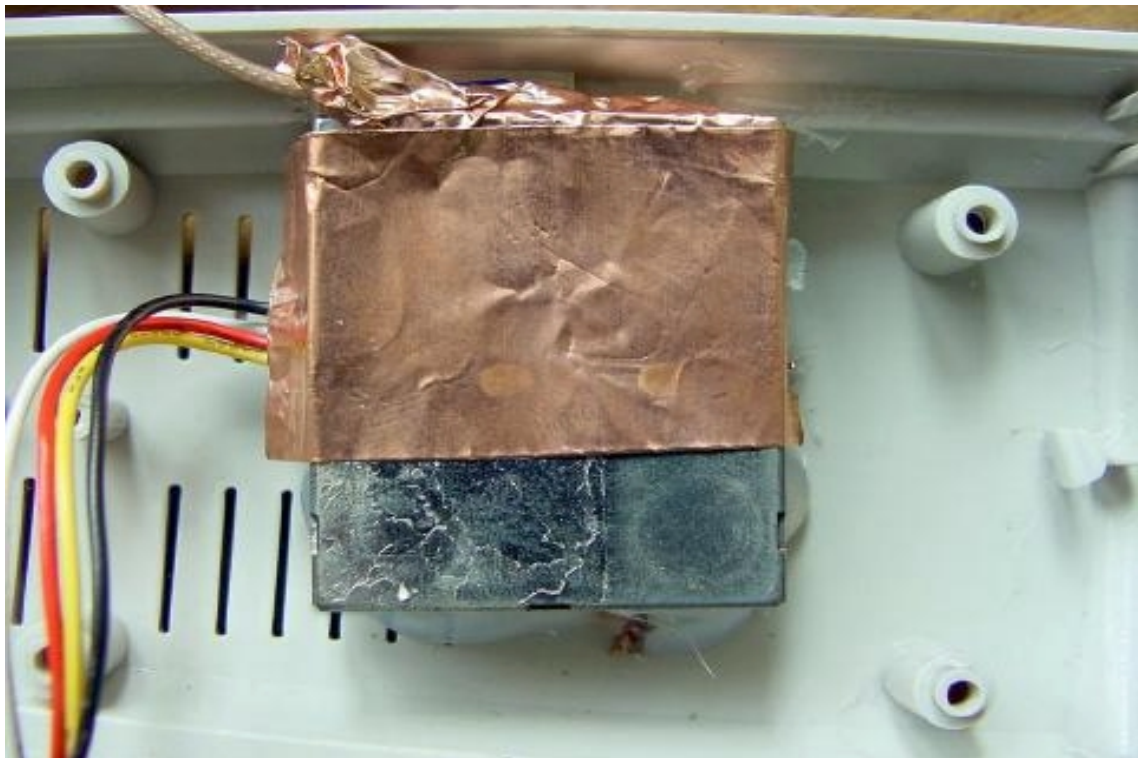


CONSTRUCTED PHOTOS of EUT

9. Solder View of CCD PCB



10. Front View of RF Box

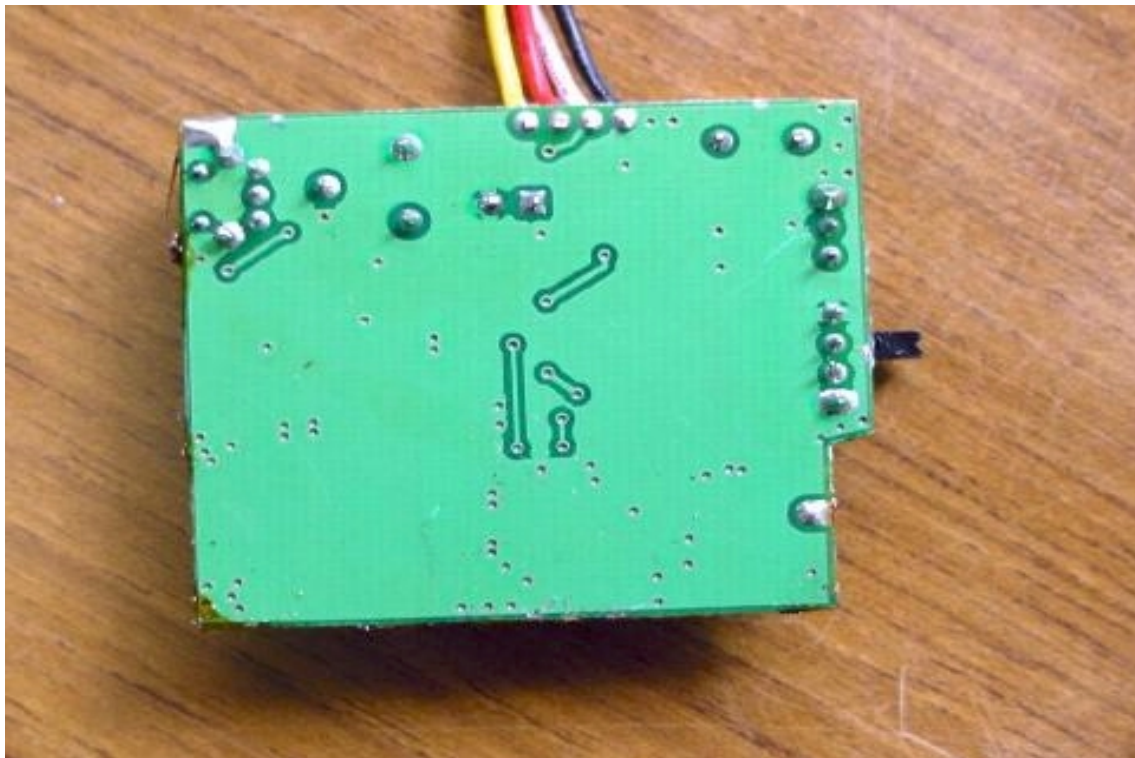


CONSTRUCTED PHOTOS of EUT

11. Component View of RF PCB



12. Solder View of RF PCB

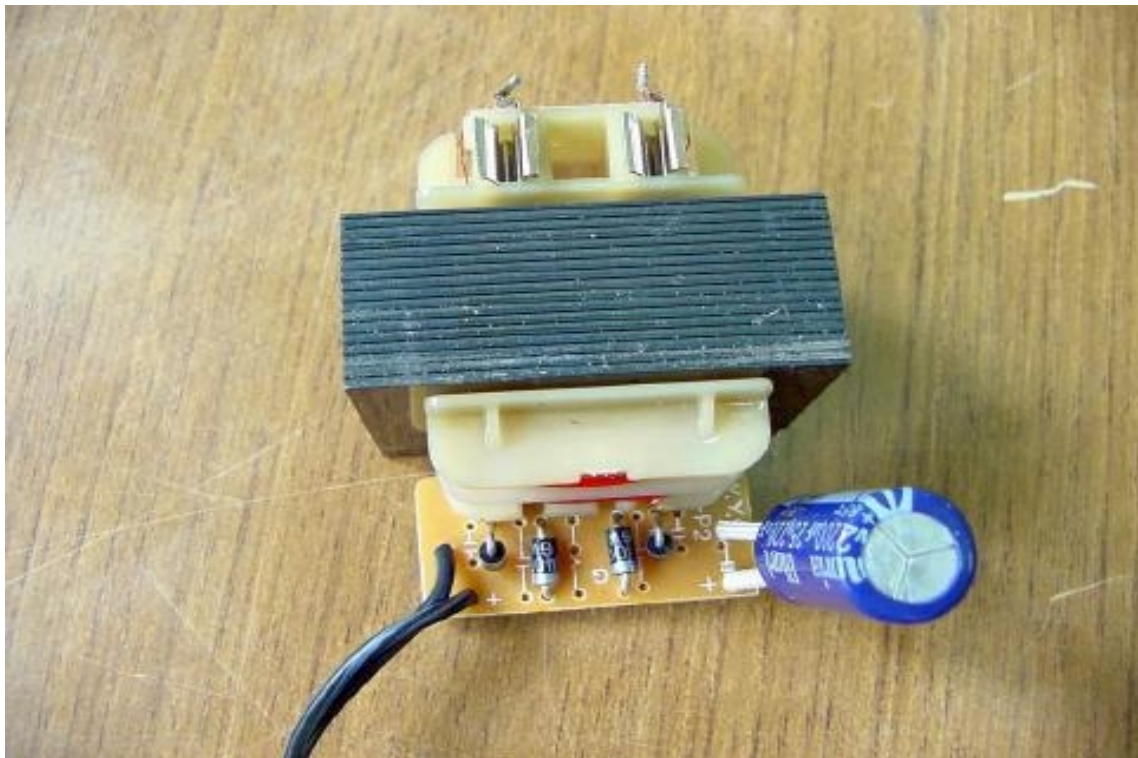


CONSTRUCTED PHOTOS of EUT

13. Internal View of Adaptor



14. Component View of Adaptor's PCB



CONSTRUCTED PHOTOS of EUT

15. Solder View of Adaptor's PCB

