

Installation Guide

BL-500 Bluetooth PCMCIA Card in Windows 2000

Version: 1.0





Declaration of Conformity

Bluetooth PC Card – Rev 5. Product Code: BL-500

We, Brain Boxes Limited, of Unit 3c Wavertree Boulevard South, Wavertree Technology Park, Liverpool L7 9PF, United Kingdom declare that the Product listed above is in conformance with the essential requirements of the European Council Directive:

1999/5/EC (R & TTE)	Radio and Telecommunications Terminal Equipment Directive (following Annex III of this Directive)
---------------------	---

The essential requirements being:

Safety of the user (Article 3.1a)	Following directive 73/23/EEC; 93/68/EEC
Electromagnetic Compatibility (article 3.1b)	Following directive 89/336/EEC
Effective use of the spectrum (article 3.2)	Following notified body opinion from ETS Dr Genz, GmbH, Storkower Strasse 38c, D-15526, Reichenwalde bei Berlin, Germany

This declaration is based upon compliance with the following standards:

EN 60950: 1992;	Safety information Technology Equipment, including Electrical Business Equipment
EN 301 489-1/-17: 2000; EN50081 – 1: 1992; EN 50082 – 1: 1997	Electromagnetic compatibility
ETS 300 328-2: 2000	Radio Equipment and Systems (RES); Wideband transmission systems; Technical characteristics and test conditions for data transmission equipment operating in the 2.4 GHz ISM band and using spread spectrum modulation techniques.

This Declaration is made under our sole responsibility.

Authorised Signatory:

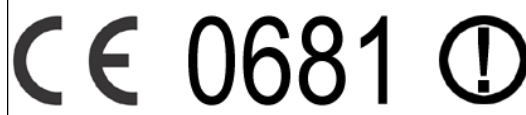


Date: 03 September 2002

P M Gray
Brain Boxes Limited
Unit 3c Wavertree Boulevard South
Wavertree Technology Park
Liverpool L7 9PF, UK

Regulatory Information

Bluetooth product operating in 2.4GHz band for Home and Office use.



Europe – EU Declaration of Conformity

This device complies with the R&TTE Directive 1999/5/EC, and the following standards;

EN60950: 1992; EN60335-1: 1994	Safety information technology equipment, including Electrical Business Equipment
ETS300826; EN301489/1-17:2000; EN50081-1:1992; EN50082-1:1997	Electromagnetic compatibility
ETS300328-2:2000	Radio Equipment and Systems (RES); Widebase transmission systems; Technical characteristics and test conditions for data transmission equipment operating in the 2.4GHz ISM band and using spread spectrum modulation techniques.

Important Notice for use in France and Italy

Italy: License required for use. Your reseller will tell you the procedure to follow.
E' necessaria la concessione ministeriale anche per l'uso. Verification con i rivenditori la procedura da seguire.

France: Low power device (1mW), there is no limitation for indoor or outdoor use.
Dispositif à faible uissance (1mW), pas de limitation pour son usage à l'intérieur ou a l'extérieur.

STATEMENT:

This device complies with Part 15 of the FCC Rules. Operation is subject to the following two conditions: (1) this device may not cause harmful interference, and (2) this device must accept any interference received, including interference that may cause undesired operation

Notice - FCC Compliance Statement for United States Users:

This equipment has been tested and found to comply within the limits for a Class B digital device pursuant to Part 15 of the FCC Rules. These limits are designed to provide reasonable protection against harmful interference in a residential installation. This equipment generates, uses and can

radiate radio frequency energy and, if not installed and used in accordance with the instructions, may cause harmful interference to radio communications. However there is no guarantee that interference will not occur in a particular installation. If this equipment does cause harmful interference to radio or television reception, which can be determined by turning the equipment off and on, the user is encouraged to try to correct the interference by one or more of the following measures:

- reorient or relocate the receiving antenna
- increase the separation between the equipment and receiver
- connect the equipment into an outlet different from that to which the receiver is connected
- consult the dealer or an experienced radio/TV technician for help.

Caution - changes or modifications not expressly approved by the manufacturer could void the user's authority to operate this equipment. This device and its antenna(s) must not be co-located or operated in conjunction with any other antenna or transmitter.

Important Safety Information

- Do not open the case. There are no user serviceable parts inside the unit
- Do NOT plug in, turn on or attempt to operate an obviously damaged unit.
- Do not alter or modify the cable assembly, or attempt to connect the cable(s) except as directed in the User Guide.
- Do not expose this product to extremes of heat or cold, or to moisture – i.e. dripping or splashing.

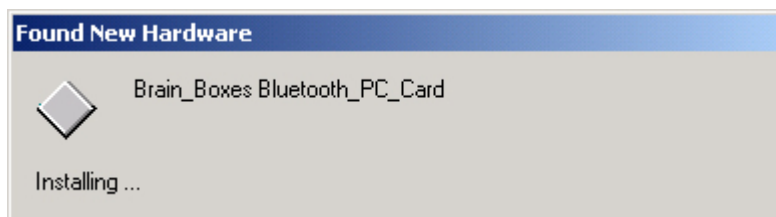
BL-500 Bluetooth PC Card Installation

This section will give you all the information that is needed to install your Brain Boxes Bluetooth PC Card Hardware into your computer running the Windows 2000 Operating System.

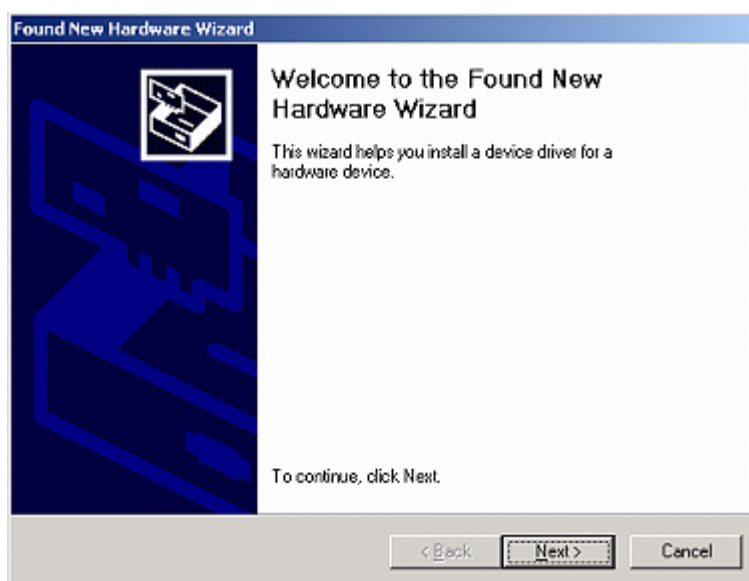
Insert the Bluetooth Product CD into your CDROM drive.



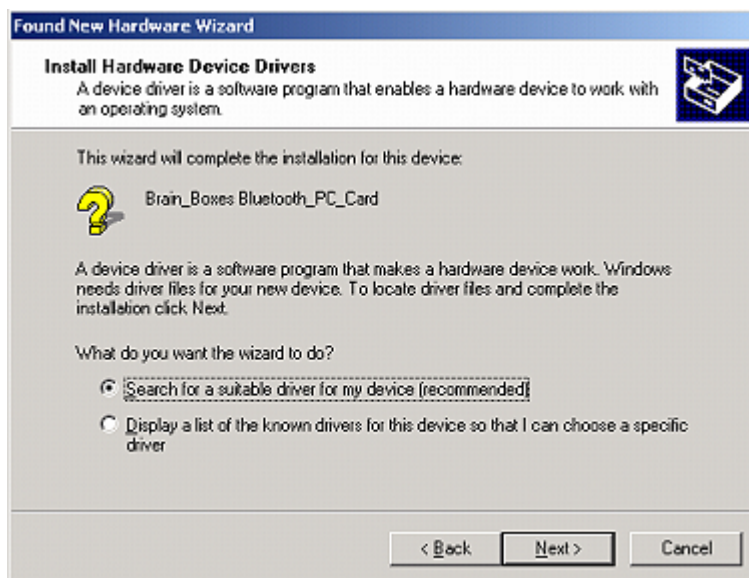
Insert the Bluetooth PC Card into a free PC Card slot



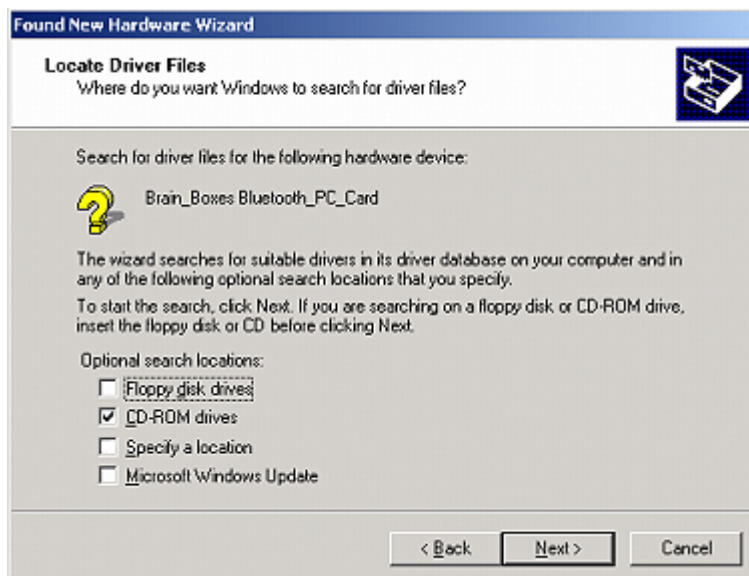
Windows 2000 will detect your card and start the **Found New Hardware Wizard**.



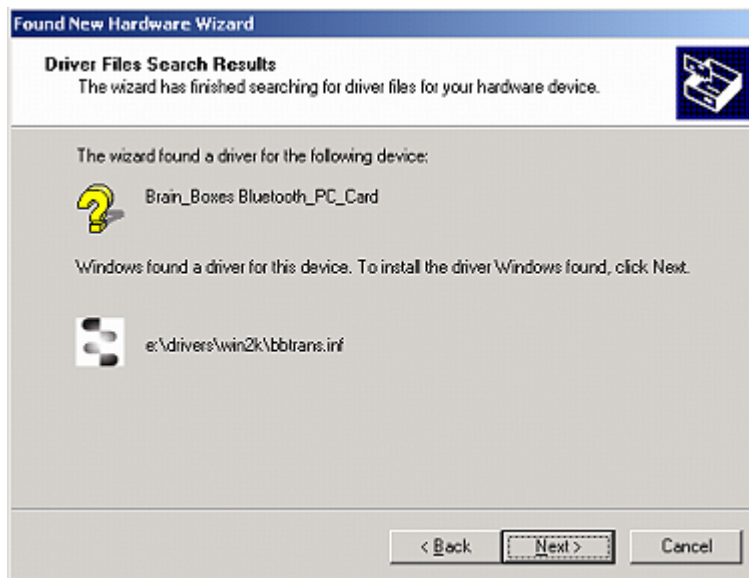
Click **Next**



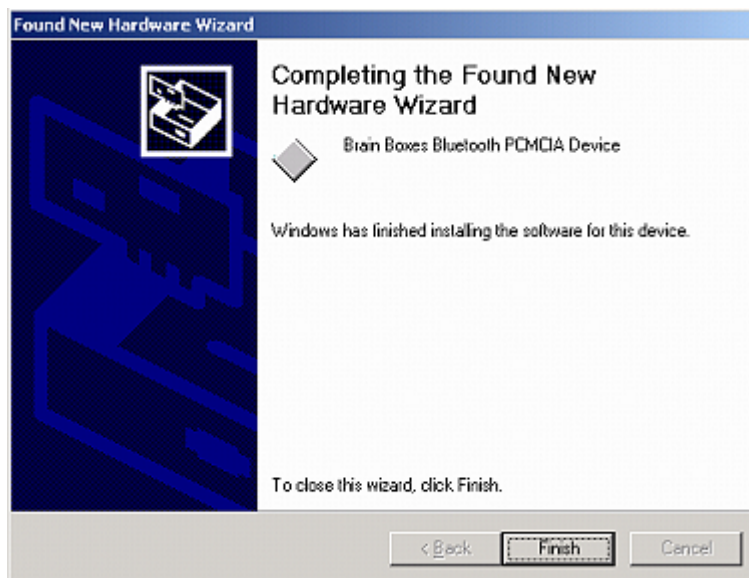
Select **“Search for a suitable driver for my device”**. Click **Next**



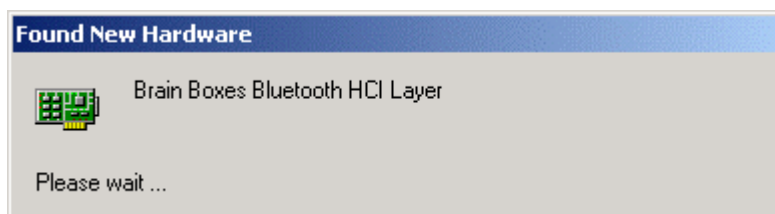
Select **CD-ROM drives**. Click **Next**



The Wizard has found the required software. Click **Next**



The software is now installed. Click **Finish**.



The **Found New Hardware** wizard will detect a number of devices on your card and install the drivers for them.



A My Bluetooth devices icon will now appear in the My Computer folder on your desktop. Double clicking on this icon will open the My Bluetooth Devices user interface which will enable you to configure your card and establish connections with other bluetooth enabled devices.

The Brain Boxes Bluetooth icon found in the icon tray on your start bar can also be used to access this user interface.

Full details of the My Bluetooth Devices user interface can be found in the configuration chapter.

Version History

Version	Date	Author	Checked By	Comments
1.0	13/05/2002	Gavin Jewell	Gavin Jewell	First Edition