



國際電器認證中心有限公司 International Electrical Certification Centre Ltd.

提供電器產品測試國際認證及諮詢服務 Technical Services in Electrical Product Testing, International Certification & Information

FCC ID: NW4460217

Agent of 
Accredited Laboratory

Exhibit 5 - User's Manual

Head Office

Unit 602-605, 6/F, 31 Lok Yip Road, On Lok Tsuen, Fanling, NT, Hong Kong Tel (852) 2305 2570 Fax (852) 2756 4480
香港新界粉嶺安樂村樂業路31號6樓602-605室 電話 (852) 2305 2570 傳真 (852) 2756 4480



LANDSPEEDER

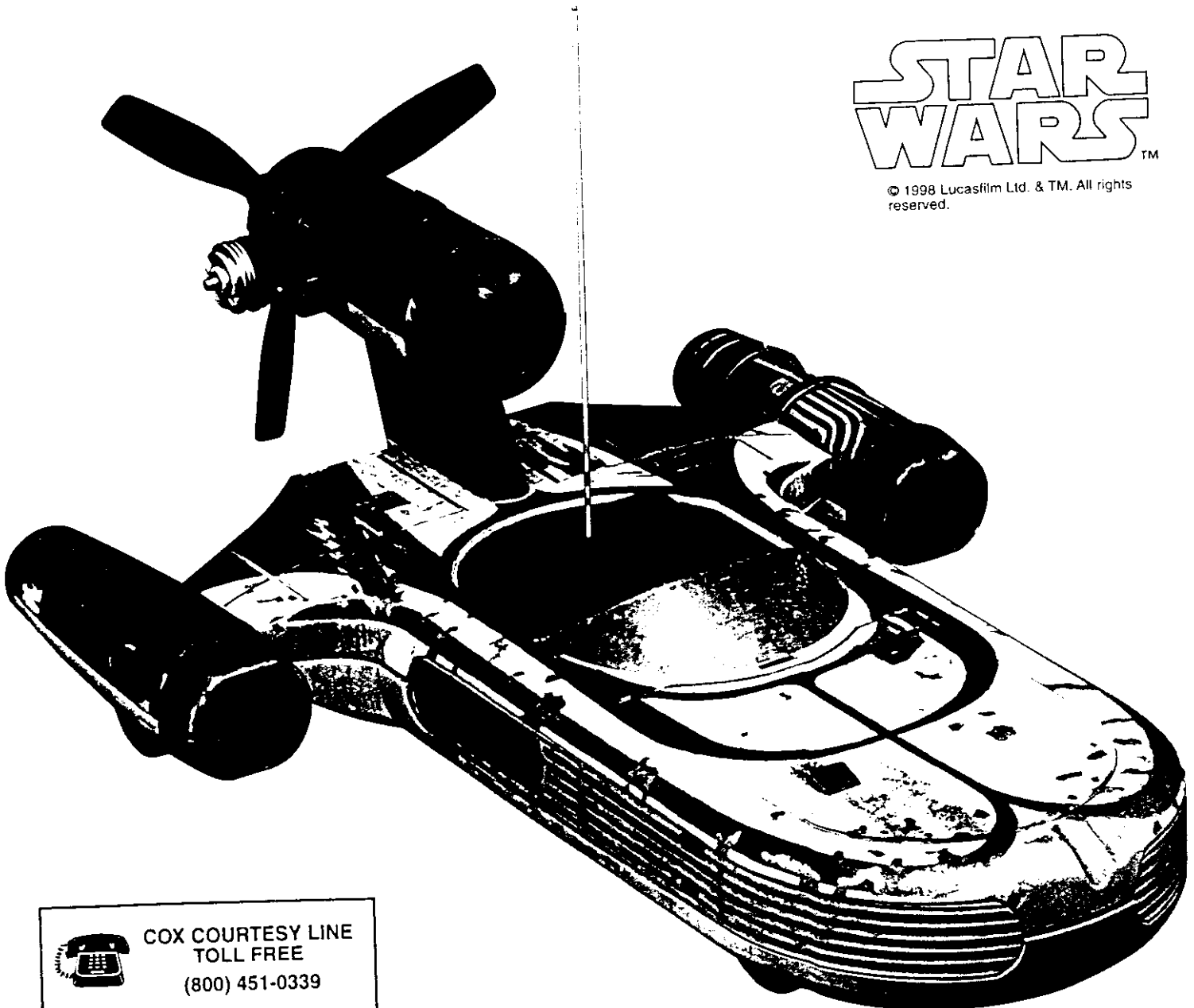
GLOW FUEL POWERED R/C VEHICLE

Cox 9430

ASSEMBLY AND OPERATING INSTRUCTIONS

**STAR
WARS™**

© 1998 Lucasfilm Ltd. & TM. All rights reserved.



**COX COURTESY LINE
TOLL FREE**

(800) 451-0339

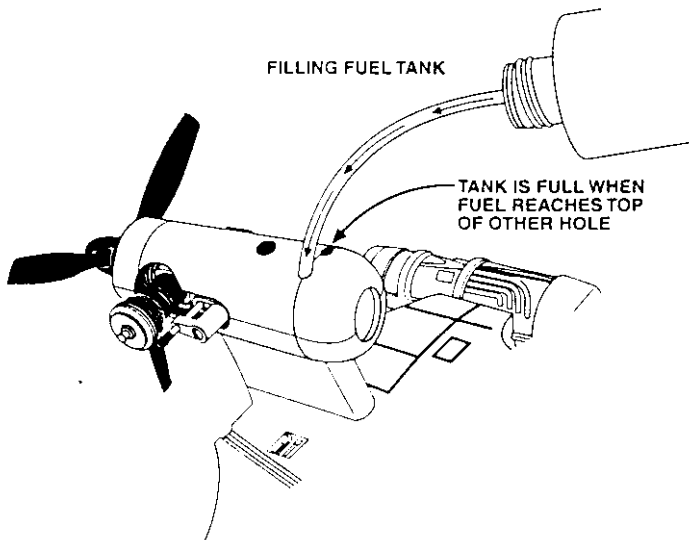
AT YOUR SERVICE FOR PERFORMANCE
TIPS AND PARTS

WARNING

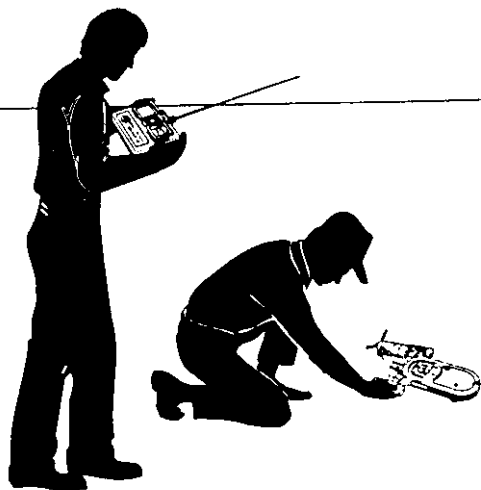
Improper use of this product may result in
personal injury or damage to the product.
Please read the instructions carefully.

3. Engine Preparation

- A. Refer to the Sure Start™ Starting and Troubleshooting Guide (included) for directions on how to start and break in your engine. Follow the starting steps outlined in the Guide except the fuel tank will need to be filled through the filler holes shown at right. Be sure controls are off before filling or starting your engine!



4. Driving Your Landspeeder

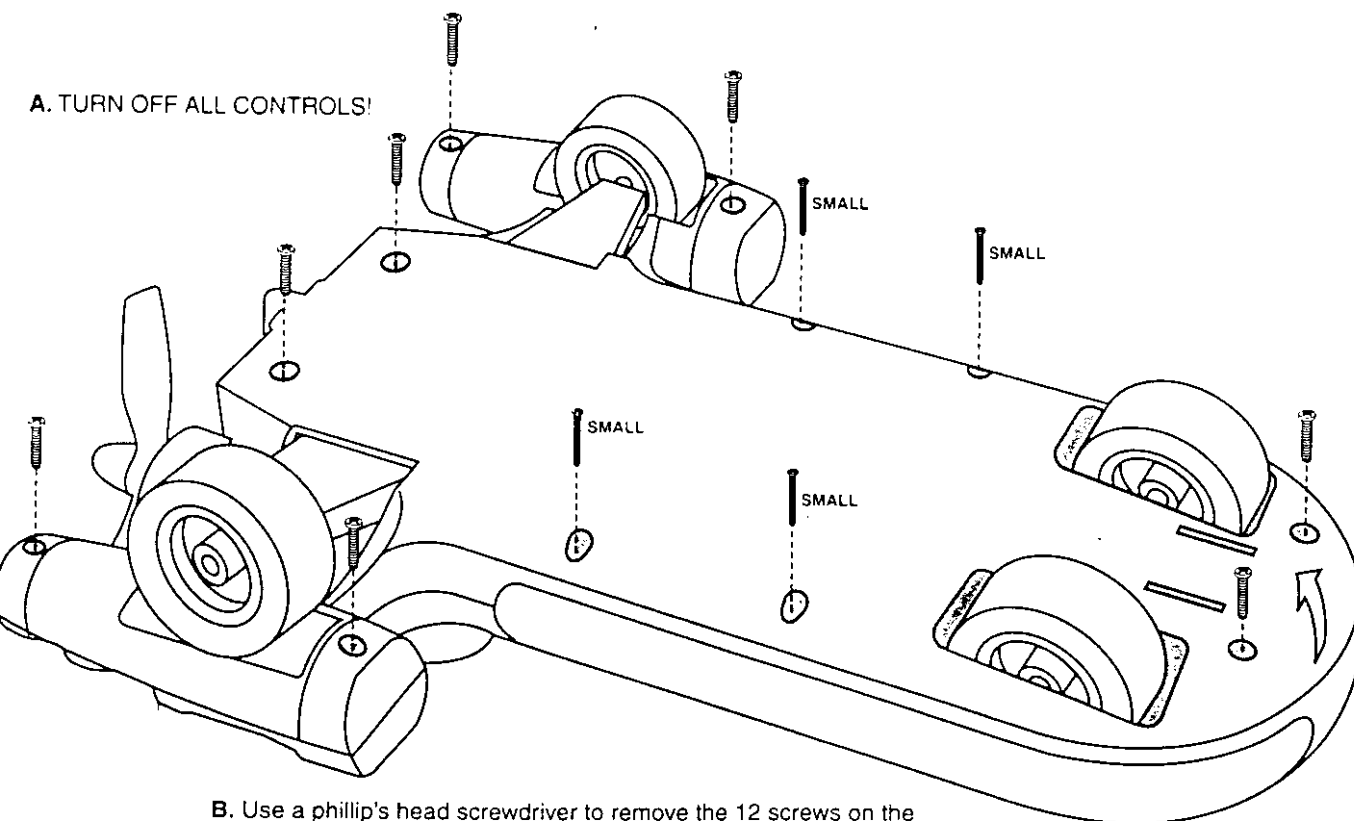


- A. Choose a large, flat area such as a parking lot. Do not attempt to drive your landspeeder on gravel or grass.
- B. Push the switch inside the cockpit to "on", then push the switch on your radio to "on". **CAUTION:** Be sure that no other transmitters operating at 27 MHz are in the area. (It may scramble your radio causing you to lose control.)
- C. Start your engine. Be sure to keep away from the propeller!
- D. Fully extend the antenna on the transmitter. Have a friend hold your landspeeder just above the ground until you have the radio in your hand and are ready to start driving.
- E. Signal that you are ready and have your friend put the landspeeder down. Now drive as Luke Skywalker did when he cruised across the desert plains of Tatooine!

BE ALERT: Your landspeeder does not have brakes! You will need to control the unit by steering left or right using the control stick on the radio until the engine runs out of fuel and the landspeeder comes to a complete stop. Do not drive the landspeeder near anyone. Do not try to stop the landspeeder with your hands.

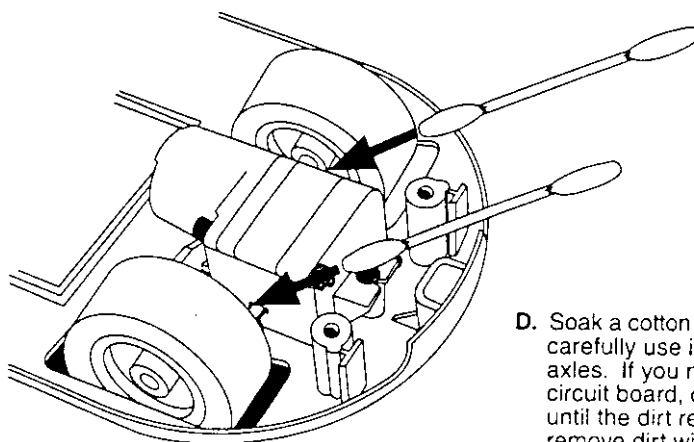
5. Maintenance

It may be necessary to occasionally clean dirt from inside the landspeeder. Soil on the wheel axles will drain the batteries' energy and cause the controls to fail. Do not attempt to clean when engine is running.



B. Use a phillip's head screwdriver to remove the 12 screws on the bottom of the landspeeder. (The diagram above will help you to put the screws in the correct holes once you have finished cleaning.)

C. Carefully lift the front of the landspeeder bottom to access the wheel axles. Do not attempt to completely remove the bottom of the landspeeder.



D. Soak a cotton swab in rubbing alcohol and carefully use it to clean the front wheel axles. If you notice dirt on the receiver circuit board, carefully blow on the board until the dirt releases. Do not attempt to remove dirt with any type of tool!